

Issue number 374

**December 2021**

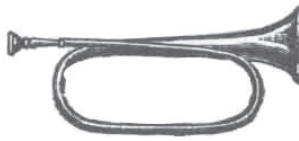


**This issue kindly  
sponsored by -**

**Wishing all our friends  
and neighbours a  
Happy and Healthy  
Christmas and New Year.  
Jim, Elaine & Alex Talbott.**

**The village magazine produced for the people of Bildeston  
online in full colour at  
<https://bildeston.org/bugle-village-magazine/>**

**Bildeston Noticeboard public group | Facebook**



## BILDESTON BUGLE ADVERTISING AND FREE CONTRIBUTION INFORMATION

Our aim is to provide every resident and organisation in Bildeston with a magazine which provides information of local interest FREE OF CHARGE. To that end we are required to be efficient in the space we use to print free notices. We endeavour to include interesting items, announcements for events open to the general public for free and items of a charitable nature free of charge. Ongoing free announcements need to be reduced to minimum size or make a contribution towards printing costs. Please check with us before submitting your advert and ALWAYS provide us with all of your contact details in order for us to send an invoice and receipt.

email: [editor@bildestonbugle.co.uk](mailto:editor@bildestonbugle.co.uk)

*Sponsor a 'Bugle' - £15 per issue*

and have a brief message of your choice printed on the front of the Bugle

### *Advertising Rates*

	1 issue	12 issues	
1/4 page	£5.00	£35.00	65mm W x 92mm H
1/2 page	£10.00	£60.00	134mm W x 92mm H
Full page	£15.00	£110.00	134mm W x 190mm H

#### THE SMALL PRINT

All adverts, payments and items are required before the 17<sup>th</sup> of every month for inclusion in the following month's issue (except December before the 15th).

The earlier free contributions are received the greater the chance of inclusion.

The Editorial Team are not responsible for the accuracy of articles or adverts and reserve the right to alter, shorten or refuse any item submitted for publication.

Ask for BACS details or make cheques payable to Bildeston Bugle and send to:

The Editor, Bildeston Bugle, 14 Squirrells Mill Rd, Bildeston IP7 7DY

If we do not receive payment by the 17<sup>th</sup> of the month your advertisement may NOT be included

**The Bildeston Bugle Management Team is:**

Alan Jacobs (Editor) 01449 741645

Tricia Baldwin (Marketing & Advertising Revenue)

Christine Hubbard (Treasurer) 01449 740633

Stuart Law and Alison Sims (Assistant Editors)

Pam Weaver (Distribution)

Lisa Chinnery (Printing)

# ED'S COMMENT

Given what happened last year we are probably more excited than usual about Christmas 2021. With Christmas 2020 seeing plans forced to change at the last moment, with so many having to stay at home and avoid seeing family due to coronavirus restrictions, we're all hoping that this year's Christmas will be a very special celebration. This Christmas certainly needs to be one when things can return to some kind of normality.

It is impossible to underestimate the significance of Christmas and its place in our lives. Firstly it remains the most important Christian festival in the calendar. Apart from faith reasons it provides a host of reasons for why it is so significant. It marks the end of that year, deep in winter. A bright spark of celebration when everything around is dark and cold. An event in the final month of the year. A time for many workers to have a party, to keep close to work colleagues you like, and avoid those you don't! A chance to corner the boss and make sure they know who you are, that you even exist. Sharing Secret Santa presents you trawled around for the funniest/naughtiest item you could find for less than a tenner! Sending cards to friends and relatives. Receiving and displaying them, wondering who on earth this one is from, never heard of him/her! Oh my, it's from them, and we didn't send them one! Going crazy with decorations and lights, in and out. It provides the time in the year for one of the best family get togethers you can ever have. It's the time for giving and receiving. The anticipation of your loved one's reaction to your gift after all that shopping. Most of which, this time, was done on line and delivered to your door, so exhausting! The excitement of unwrapping shiny paper welded down by sellotape so strong, you can't find the edge to get into the damn thing! It's a source of A&E visits every year!!

The chance to wear sparkly Christmas jumpers, the more decorative, the better. Time to snack on all sorts of delights you don't have at other times of the year. And this is before the main event of the Christmas dinner itself. What shall we have this year? Traditional turkey from a local farm as we are so lucky to live near quality producers. How about a change to a goose or one of those trendy three or four bird roasts? One that goes from massive turkey down to a Lark!

The opportunity to enjoy a drink at times you don't normally imbibe. Champagne? Well, Prosecco or Cava, but if you hide the bottle, no-one is any the wiser.

Besides Prosecco is so on trend! After the huge Christmas lunch, which we finally get around the time we usually have a cup of tea this part of the afternoon, out come the party games. The funnier the better. Charades always goes down a treat when we try and guess the same books and films that we couldn't remember last time we did this! Watch the tele? No, full of repeats, even worse than last year. How many times have we watched The Great Escape now? !!

The thing is, we wouldn't change any of that, we are looking forward to everything mentioned above, and more, wouldn't have it any other way.

Roll on Christmas 2021! Best Christmas wishes from all the Bugle team.

# **LAXFIELD HOUSE NURSING HOME**

## **BRENT ELEIGH, Nr LAVENHAM, SUDBURY, SUFFOLK**

Situated in a quiet village location with beautiful gardens, offering residential and full nursing care for elderly people.

A highly trained team of nursing sisters and care staff provide excellent nursing care with kindness and compassion, ensuring privacy and dignity at all times.

**\* Long or short term respite care available \***

A warm welcome is always extended to all visitors



All rooms are well appointed with en-suite facilities.  
Nurse Call System, Passenger Lifts, Various Public Rooms

**This nursing home was established over 25 years ago by the current proprietor and family with ongoing input and management.**

**Enquiries to - Mrs J. Carne RGN, RM, (Matron)  
Mrs E. P. Knight RGN, RM, Mr N. Knight (Proprietors)**

**Telephone (01787) 247340 / 495**

**[enquiries@laxfieldhouse.co.uk](mailto:enquiries@laxfieldhouse.co.uk)  
[www.laxfieldhouse.co.uk](http://www.laxfieldhouse.co.uk)**



**Member of the Registered Nursing Home Association**



# Bildeston Primary School

*Learning and Growing Together*

## Our New Reading Bench



Finding a quiet spot on our new bench for some reading with friends and making sandwiches using instructions! Yummy!



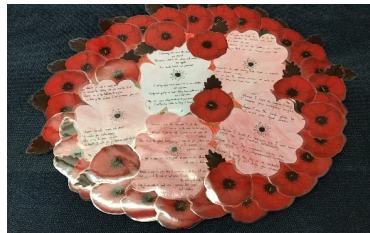
## North, East, South and West

Robin Class can give directions using north, east, south and west. They made routes on the playground giving directions for their friends to follow. They also practised using compasses.

## Remembrance Sunday

Our KS2 children produced poems of remembrance and used some of them to

create a wreath that was laid at the war memorial in the market square on Sunday.



## U11 Football

Pupils from KS2 enjoyed a Football event at Whitton Sports Centre where they came a respectable fourth place amidst teams from across Suffolk. A fair play award was given to one of our players! Well done all!

## Tuesday Teacher Led Club

Children building bridges to span a river in construction club with Mrs Simmons. The children are really enjoying these sessions which range from Lego building, Multi-Cultural activities and food tasting to Creative Writing.



**If you are considering Bildeston Primary as a school for your child, we would welcome a visit. Please phone the office on the number below. We would love to meet you.**

**Bildeston Primary School**  
Newberry Road, Ipswich, Suffolk, IP7 7ES  
Telephone: 01449 740269 Website: [www.bildeston.suffolk.sch.uk](http://www.bildeston.suffolk.sch.uk)

# CHAMBERLIN HALL



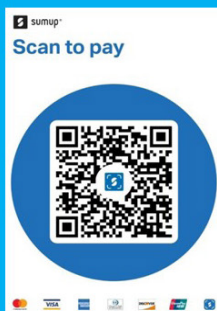
## ROCK & ROLL DECEMBER 18TH

**Tickets  
£5**

**Telephone:**

**Tracey 07507 511318**

**Julie 07891 151995**



**DOORS OPEN 8PM**

**Chamberlin Hall, Bildeston, IP7 7EZ**

# Chamberlin Hall

BILDESTON'S COMMUNITY VILLAGE HALL



To find out more call our bookings

## ***What's on in December***

**For bookings contact: 07716 921514 or  
chamberlin.bookings@gmail.com**

Mondays	3.30 to 9.00pm	MLSPA Performing Arts (07957 351941)
Tuesdays	11.00 to 12.00pm	Rosies Line Dancing
Tuesdays	7.00pm	Snooker Club
Tuesdays	7.30pm	Carpet Bowls contact Mike 01284 827688
Wednesday	7.00 to 11.00pm	Open Mike with Kev and Dave
Thursdays	10.30	Zumba Gold with Joanna Brown
Thursdays	7.00 to 10.00pm	VIPs Drama Group (call Debbie: 01449 740375)
Thursdays	9.15 -10.15am	Exercise classes (call 07718593532)
Fridays	11am	Pilates for Improvers (call Claire: 07900 440141)
Fridays	12.00	Pilates for Beginners (call Claire: 07900 440141)
Fridays	6.30 -11.00pm	Social evening
Saturday 12th	1.00pm to 4.00pm	Christmas Indoor Market

### **NEXT BUGLE DEADLINE 10TH DECEMBER**

The next issue of the Bugle has an earlier deadline of 10th December. This is to enable us to print and deliver the Bugle before the Christmas period.

The January Bugle will be printed during the week 13th December.

Any items for the next issue must be received by Friday 10th December at the latest to avoid any disappointment.



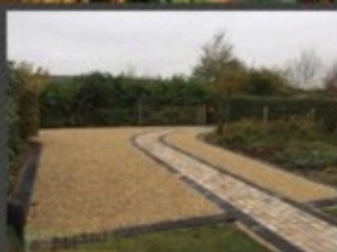
# **ALL ASPECTS LANDSCAPING**

## **Fencing Paving Treecare**

**WWW.ALLASPECTSLANDSCAPING.CO**

**CALL NOW FOR A FREE NON OBLIGATION QUOTE**

**Follow us on Facebook**



**We cover all hard and soft landscaping with many years of experience**

**FENCING -DRIVEWAYS - PATHS AND PATIOS-BLOCK PAVING -  
GARDEN GATES AND WALLS -TURFING AND SEEDING-GARDEN  
CLEARANCES-DIGGER WORK -CURB STONES-ALL TREE WORK  
AND HEDGE CUTTING-GRASS CUTTING LARGE/ SMALL AREAS**

**01284 624089 | 07384351944**



**TIS THE SEASON TO SHOP!**

# **Chamberlin Hall Christmas Market**

**DECEMBER 12TH • 1PM - 4 PM  
CHAMBERLIN CLOSE, BILDESTON**

Email: [chamberlin.indoormarket@gmail.com](mailto:chamberlin.indoormarket@gmail.com)  
Support local artisans this holiday season.



# Bildeston Ladies Club

What a fascinating character Mrs Pretty turned out to be! At our November meeting, Julia gave us a very detailed talk about life in the early 1900s and into the years of The Great War. Mabel Pretty was among a group of women married or related to the big industrial and commercial families of Ipswich - names we still recognise today, including Churchman, Tollemache and Cobbold to name just a few.

As part of a group of early Suffragists she was involved in setting up the first workplace nursery in the country and Prettys corset factory had the first pension scheme for its workers.

In fact, Ipswich was a town of firsts at that time - being the first town outside London to have electric street lighting and due to the efforts of these formidable ladies Ipswich had the first British field hospital during the war which could receive soldiers from the frontline within 24 hours.

Mrs Pretty went on to become the first female town councillor and the first lady to hold a driving licence in Ipswich - whilst her husband gained the first speeding ticket!!

Julia's enthusiasm for her subject was plain to see and maybe we will have her return for another chapter in the story!

December this year sees us returning to our Christmas celebration  
with a Christmas meal on

**Thursday December 9th**

**7:00 p.m. for 7:30 p.m.**

Don't forget to bring your Secret Santa gift and  
money for our fundraiser games.



Whilst we will be enjoying this and other celebrations involving food and drink over the Christmas period, I would ask you to spare a thought for those less fortunate and consider donating some Christmas goodies to our local food bank. We are not doing an official collection this year, but I know that 14 families are still calling on the support of the food bank as times remain difficult with ever increasing prices of food and now the added burden of rising costs for fuel.

We wish you all a HAPPY CHRISTMAS.

Jo Silburn - 01449 257045



## HEATHER MORPHEW

*The Bugle team was so saddened to learn of the death of Heather Morphey.*

*Heather was a longtime member of the Bugle's group of collators and staplers and her enthusiastic and cheerful contribution was much appreciated.*

*We extend our sincerest condolences to her family and friends.*

# SEAGER SWEEPS

Professional Chimney Sweeping Services

## Chimney Sweeping Prices From £55

For 2021/22

(For any standard chimney or lined stove)

**Book online**

[www.seagersweeps.com](http://www.seagersweeps.com)

Tel: 01449 741595 / 07958739686

Email: [info@seagersweeps.com](mailto:info@seagersweeps.com)

Bildeston, Ipswich, Suffolk, IP7



## The Cinnamon Trust

The National Charity for the elderly, the terminally ill and their pets

It is widely acknowledged that pets can positively benefit the well-being of elderly owners.

For many elderly people living on their own, their pets are their reason for living.

They are constant companions - on hand 24 hours a day, every day, comforting, loving and protecting their owners - not only from outside threats, but also offering the more subtle form of protection from loneliness and despair.

Via a national network of 15,000 volunteers, the Cinnamon Trust offers the following services all over the UK to elderly and terminally ill pet owners.



### • Dog Walking

• Care - Any day to day pet care the owner can't manage.

• Short Term Fostering - For pets whose owners face a spell in hospital.

• Long Term Fostering - For pets whose owners have died or moved to residential accommodation which will not accept pets (by prior arrangement).

• The Pet Friendly Care Homes Register - The Trust's guide to care homes and sheltered housing that will welcome residents and their pets.



If you are interested in learning more about The Trust and how we could help you,

please contact us at:

Tel 01736 757 900

Email: [volunteer@cinnamon.org.uk](mailto:volunteer@cinnamon.org.uk)

Website: [www.cinnamon.org.uk](http://www.cinnamon.org.uk)

10 Market Square, Hayle, Cornwall TR27 4HE

Registered charity number 1134680



# Transform your home!



CLADDING

WINDOWS

DOORS

CONSERVATORIES



MULTI AWARD-WINNING

## Frames Conservatories

Your Complete Home Improvement Centre

*Direct*

Add some kerb appeal to  
your home, call us now on:

# 01284 799470

Unit 3, Barton Road Retail Park, Bury St Edmunds, Suffolk IP32 7BE (Nr Farm Foods)

or visit [www.fcdhomeimprovements.co.uk](http://www.fcdhomeimprovements.co.uk)

ALUMINIUM PRODUCTS ★ CLADDING ★ WINDOWS ★ DOORS ★ CONSERVATORIES ★ FASCIAS & SOFFITS

# COVID BOOSTER JABS

Residents across Suffolk and North-East Essex no longer have to wait to receive an invitation from the NHS to have their Covid-19 booster vaccination. Anyone in an eligible group who had their 2nd dose of COVID-19 vaccine at least six months ago can go to a walk-in, no-appointment clinic for a booster vaccination.

***book via the national NHS website or call 119.***

Previously, people had to wait to receive a letter or text from the NHS saying they were eligible. The number of locations where people can have their booster vaccination has also been increased, including many local pharmacies now offering booked appointments, in addition to around 60 walk-in clinics which are taking place locally over the coming weeks.

People are eligible for a booster six months after receiving their 2nd dose, and include those aged 50 years and over, frontline volunteers and health and social care staff, people with severely weakened immune systems and their resident household contacts and those aged under 50 with an underlying health condition.

## MOBILE LIBRARY SERVICE

The Mobile Library is operating as normal now, but with the following provisions:

- One customer at a time
- Everyone to sanitise their hands before entering
- staff will wear face masks and customers encouraged to do the same
- please be as quick as possible to allow others time to choose
- there is a temporary limit of 4 items per person
- all returned stock is quarantined for 72 hours
- shelves are sanitised between stops

The Bildeston stops are as follows:

Brooksfield at 14.10 to 14.25  
Market Square 14.30 to 14.45  
Newberry Road 14.50 to 15.05  
Paddock Way 15.10 to 16.00

# HONEY BEE'S NURSERY



Hitcham Village Hall, Hitcham, IP7 7NE

**FOR CHILDREN AGED 2 – 5 YEARS**

Open Mon, Wed, Fri 9.15a.m. – 12.15p.m. or 3.15p.m.

Tues, Thurs 9.15a.m. – 12.15p.m.

Early Drop Off – 8.00a.m. Lunch Club Daily until 1.15p.m.

**2 Indoor Rooms and Outdoor Areas**

Ofsted Registered

**Early Years Funding for all 3/4 year olds and eligible  
2 year olds.**

**30 hrs funding also available.**

Contact: Sharon Scarfe 07947621122 (mobile) 01449 740764 (hall)

Or visit [honeybeesnursery.co.uk](http://honeybeesnursery.co.uk)

**WANT TO LEARN TO PLAY  
GUITAR, BASS, DRUMS?**

***MANY CONTEMPORARY STYLES COVERED, INCLUDING  
ROCK, METAL, POP, INDIE, BLUES, FUNK AND MORE.***

*KEYBOARDS, VOCALS, SONG AND LYRIC COMPOSITION*

MOBILE DIGITAL RECORDING SERVICE AVAILABLE



**ADAM KEETON**

GOOD COMPETITIVE RATES

01449 744530 OR 07914 798374

FULL DBS + LOCAL YOUTH GROUP LEADER





# LESSONS FROM DEER

Deer come in many shapes and sizes. The biggest is the moose, over 2m tall at the shoulder and the smallest is a Pudu about 40cms at the shoulder. These versatile creatures live on every continent, except Antarctica.

In the arctic reindeer have a special role... they are a key part of Santa's team.

A majestic stag even appears in Harry Potter as a powerful Patronus

Let's answer an important question.

*What is the plural of deer? Is it deer or deers?*

*Answer: it is deer.*

If you see a group of deer, not deers, you could call them a herd or more interestingly you could also call them a bunch, mob, parcel or ranga

Another question.

*When is a deer not a deer?*

*Answer: When it is a badger, or a hedgehog.*

The word deer comes from the old English, word Déor.

This was originally used for any animal that walked on four legs and lived in the wild e.g. a boar, fox, badger or hedgehog. If you see a fox out on your walks you would only be a little bit wrong to call it a deer. You could amuse and confuse your family and friends all at the same time with that fact.

Did you know that the largest deer antlers ever found belonged to the *Megaloceros giganteus*? The Irish Elk (an odd name for a creature not only found in Ireland and not an Elk, it was a part of the deer family). The antlers are 12 feet across and weigh almost 90 pounds.

Here are a few antler facts:

Antlers aren't horns. It's complicated but a simple difference is that antlers are cast off and horns remain. 36 of 40 species of deer have them in some form. The skin that covers them is called velvet. Once the mating season is over the antlers are 'cast' off. The complexity of the antlers increases with age. The older the deer the more fabulous the antlers. They grow faster than any other mammal bones.

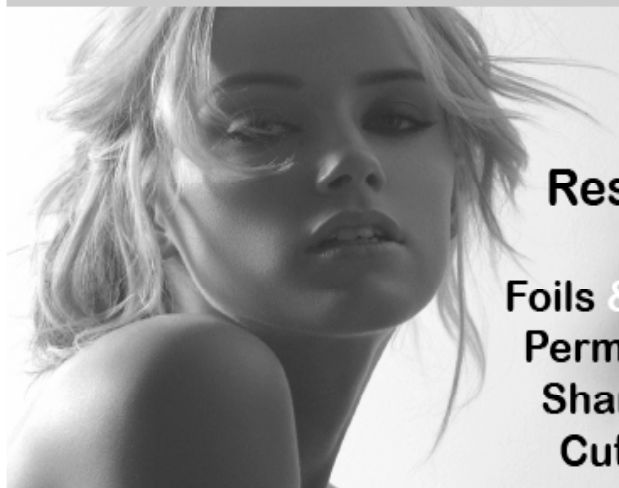


*With thanks to Jacqui Wilkinson*

*Training, Safeguarding and Quality Standards Development Officer  
Community Action Suffolk*

# Studio 66

*Ladies and Gents Hairdressers*



**Restyling**

**Foils & Highlights  
Perms & Colours  
Shampoo & Sets  
Cut & Blow Drys**

**Friendly Service from our Professional Team**

**Tue & Wed Senior Citizens**

**\*\*\*special rates\*\*\***

**Opening Times Tues - Friday 9 - 5 pm Sat - 8 - 1pm**



**Tel 01449 740644**

**52A High St Bildeston IP7 7EA**

## **BILDESTON COMMUNITY CYCLING**

Why not join our monthly Saturday morning Winter Warmer series?  
These rides are for riders of all abilities.

# **WINTER WARMER 3**

JOIN US FOR A RIDE OF ABOUT 25 MILES,  
STARTING FROM THE MARKET PLACE  
AT 9.30am, ON SATURDAY 11 DECEMBER.  
CAFE STOP HALFWAY. BACK ABOUT 12.30pm.

### **PUT IT IN THE DIARY NOW!**

Warm clothing recommended. The ride will be mainly on quiet lanes,  
at an acceptable speed (no-one left behind!). Regret no  
unaccompanied children under 16.

JUST TURN UP; or for more information, contact Robin Weaver 741048



### **Sports Field Pavillion**

**Hire this facility for your  
parties – fund raisers - regular classes or  
activities**

**Ideal for children's parties with outdoor space.**

**Kitchen /alcohol license/ Hall/Outdoor space**

**For hiring rates & conditions contact:**

Email: [bildestonsportsfield@gmail.com](mailto:bildestonsportsfield@gmail.com) or phone 07766527433

# xSalt

**IT Services**  
*Local, friendly, and dependable IT support*



*Website QR*

- **Laptop & desktop repairs**
- **Upgrading old/slow PCs**
- **Virus & malware removal**
- **Tuition, advice, and support**
- **Device setup: PCs, Printer, Wi-Fi**

**Website: [xsalt.co.uk](http://xsalt.co.uk)**

Call Olly: 07443439508  
Email: [info@xsalt.co.uk](mailto:info@xsalt.co.uk)

## Green Farm Vintage China Hire



*A large selection of Vintage china, glass and other items to hire for vintage tea parties, weddings and other occasions at very competitive prices.*

*20% of your china hire cost will be donated to the charity of your choice.*

For more information, a price list and photos, please see my Facebook page:

Green Farm Vintage China Hire

Email: [carole.homer@btinternet.com](mailto:carole.homer@btinternet.com)

Tel: 01449 741498

Mobile: 07879265756



## **BusyB**

**Quality Dressmaking,  
Alterations and Textile Crafts**

A professional bespoke service from a friendly local dressmaker.

Call for a no obligation free quote.

Find me on Facebook as 'Bev Busyb'  
or Google Maps – search for 'BusyB'

Mob: 07753 177703 Tel: 01449 737618

email: [busybev@btopenworld.com](mailto:busybev@btopenworld.com)

[www.busybev.co.uk](http://www.busybev.co.uk)

# SESAW NEWS

Here we are in December and it's time to thank all the wonderful people who have supported SESA W in so many different ways over the last twelve months. Those who care for the animals, carry out maintenance, organise fundraising, donate handmade or purchased items, visit our stalls at outside events to mention but a few. Your efforts ensure the charity continues to care for animals in need.

We hope to hold sales again in 2022, assuming no Covid restrictions prevent it.

Please leave a message on our ansaphone or email if you would like to help at events.

Applicants to help with animal care are also welcome if you can commit to one morning a week.

Copies of Frank Payne's book, "Here Today, Gone Tomorrow" are still available, an ideal Christmas present when combined with the next instalment of the Author's biography, "Well Worth Waiting For". Frank details his wartime childhood, National Service leading to his career as a Sports journalist. Phone 01206 263006 to order the two volumes for £10, all proceeds to SESA W.

We do not rehome animals over the Christmas period so we will be closed from 10th December to 10th January 2022 except for emergencies. One last big thank you to the Editor for giving us a voice. Season's greetings to all our readers from my feline friend, Ollie and me, Kenny (the Boss) Chihuahua.

Suffolk & Essex Small Animal Welfare, Registered Charity No.1124029, Stoke Road, Leavenheath, CO6 4PP. Tel: 01787 210888 [www.sesaw.co.uk](http://www.sesaw.co.uk)

## PAINTING SERVICES

### Rob Harrison

Painting & Property Maintenance

**Tel:** 01449 741041

**Mob:** 07852 795469







## **S J WILDING GARDEN SERVICES**

**Garden Maintenance  
General garden tidy up  
Landscaping  
Hedge cutting  
Hedge reduction  
Fencing  
Turfing  
Lawn care**

**For all your gardening needs contact Steve:**

**01787 583828/07885728973**

**steve.wilding283@googlemail.com**

## **Keeping the Beat Ltd**

**Specialising in Healthy Hearts**

[www.keepingthebeat-suffolk.co.uk](http://www.keepingthebeat-suffolk.co.uk)



**Sessions are Starting Wednesday 22<sup>nd</sup> September 2021**

**At: Kersey Village Hall - IP7 6EB**

**Wednesdays at 1900**

**£5 a session**

*(One to One Risk Factor Management Assessments are also available)*

**If you are interested in joining us or would like to know more, please  
contact us at:**

Email: [keepingthebeatsuffolk@gmail.com](mailto:keepingthebeatsuffolk@gmail.com)

Mobile: 07376 608735

# **CPH Property Services**

**Painting • Decorating • Refurbishments & Repairs  
Fully Insured with Free No Obligation Quotations**

**A friendly local company with 30+ years experience**

**Tel: Chris - 07717059370 or 01787 210536**

**Tel: Paul - 07880727630 or 01449 740020**

**Email: [chris.harman1990@gmail.com](mailto:chris.harman1990@gmail.com)**

# Dunstone Optometry

## 3 Queen Street, Hadleigh

For your entire eye care needs

including contact lenses, latest Swept Source OCT eye scanner, examination of children and home visits

Frames include: Tom Davies, Tiffany, Ray-Ban & Esprit

To find out more please call in, telephone

**01473 823755** or see [dunstoneinsight.com](http://dunstoneinsight.com)



## POTTY ABOUT PLANTS?

Visit our garden centre  
and coffee shop  
in Sudbury

  
**Perrywood**

[www.perrywoodsudbury.co.uk](http://www.perrywoodsudbury.co.uk)



**S.A Roofing**

**Steven Allum**

Specialising in Re-roofing, Repairs,  
Flat roofing & all types of lead work

Contact: 01449 258346

07545071147

Email: [sarroofing@hotmail.co.uk](mailto:sarroofing@hotmail.co.uk)

## Stowe Veterinary Group

For a professional caring service

Practices located in:

### STOWMARKET

**Stowe Veterinary Centre**

01449 613 130

[stoweivets.co.uk](http://stoweivets.co.uk)

**Stowe Farm and Equine Centre**

01449 776 201

### NEEDHAM MARKET

**The Mustard Pot Veterinary Surgery**

01449 722 198

[needhamivets.co.uk](http://needhamivets.co.uk)

### IPSWICH

**Ipswich Veterinary Centre**

01473 555 000

[ipswichvetcentre.co.uk](http://ipswichvetcentre.co.uk)

### ELMSWELL

**The Old Tea Room Veterinary Surgery**

01359 241 761

[elmswellivets.co.uk](http://elmswellivets.co.uk)

### BURY ST. EDMUNDS

**Moreton Hall Veterinary Centre**

01284 747 000

[moretonhallivets.co.uk](http://moretonhallivets.co.uk)



Independent practices with a personal approach



## KGT Fencing

For All types of fencing and fencing repairs

Also grass and hedge cutting

Gardens cleared

Guttering repairs and clearing.

Phone 07813 571820

email [kgt417@gmail.com](mailto:kgt417@gmail.com).



Paul's Carpentry

# Paul's Carpentry

- Decking
- Pergolas
- Window repairs
- Sheds Built
- Fascia and Bargeboards
- Doors replaced
- Shelving
- Bespoke Wardrobes
- Handrails replaced
- Understairs Cupboards

**Mobile: 0779 234 0365**

**Tel: 01449 616888**

**email: paulhb100@btinternet.com**



## **PHYSIOTHERAPY AND PILATES**



Claire is an experienced  
Physiotherapist and certified  
Pilates Instructor.

### Services offered:

- Physiotherapy
- Womens Health Physiotherapy inc  
MummyMOT
- Running Analysis
- Sports Massage
- Pilates 1:1
- Pilates classes (BILDESTON & Hadleigh)
- Home visits

### PHYSIOTHERAPY CAN HELP:

- Muscular aches and pains
- Low back pain
- Hip and pelvic pain
- Neck pain
- Joint pain or sprains
- Repetitive strain injuries
- Nerve pain
- Ante and post natal pain
- Pre- surgery



Clinic Address:  
Kersey Mill  
Kersey  
IP7 6DP

**[www.fitframephysio.com](http://www.fitframephysio.com)**  
**Tel: 07900440141**  
**E: [Claire@fitframephysio.com](mailto:Claire@fitframephysio.com)**





Hadleigh & District Flower Club presents

Alan Smith

# 'It's Christmas Again'

Tuesday 14<sup>th</sup> December 2021 at 7:30pm

at

The United Reformed Church  
Market Place  
Hadleigh IP7 5DL

Members £2.50

Visitors £5.00

To book your place please call Jenny 01473 822971



# Bildeston Waytes 2021

WE'RE BACK! After the pandemic forced last year's Bildeston Waytes Carols online, this year the event will return to the Chamberlin Hall with a live audience!

The WAYTES CAROLS evening is an extremely popular Christmas event in Bildeston with a long tradition. An enthusiastic and vocal audience joins local musicians for an evening of festive singing. Last year the pandemic restricted us to a live stream which was nonetheless very popular and raised over £1500 for East Anglia's Children's Hospices. This year we are very excited to be back in the Chamberlin Hall. Do come and join us – this is where Christmas begins!

The date for your diary is:

Wednesday 22 December at 7:30 pm

Tickets will be available from early December from Bildeston Village Stores or can be reserved on our website at [www.bildestonwaytes.com](http://www.bildestonwaytes.com).

Any local musicians, especially instrumentalists, who are interested in taking part would be very welcome! Please get in touch for more information.

[nansi@bildestonwaytes.com](mailto:nansi@bildestonwaytes.com)

[www.bildestonwaytes.com](http://www.bildestonwaytes.com)

Fully Insured

# **SKYWARD**

## **WINDOW CLEANING SERVICE**

**Window Frames + Sills + Front & Back Doors  
cleaned every time as standard.**

Locally based 7 Brookfield, Bildeston IP7 7EH  
Pure Water High Reach Pole System (no ladders)

So no more broken tiles in accessible  
windows over conservatories, Dorma's skylights etc.  
now easily reach and cleaned from the ground.

**We also clean with  
Evolution 2 Pressure Washing System  
Patios, Driveways, Decking etc.**



For a free no obligation quote  
call Richard on

**01449 258976 or 07771 565508**

# FIREWOOD

## DRY SEASONED LOGS

Various loads available

Also available is Kiln Dried Hardwood Nets



Call Carol Abbott on 01473 829130  
or 07768 795981

Tree, Garden Work and Driveways also  
Undertaken



Regular, one off, end of tenancy, event and deep cleaning services.  
Oven and carpet cleaning on request.

Local company with outstanding  
results and high standards.

Get in contact today for a no  
obligation quote.

[www.relaxandgleam.co.uk](http://www.relaxandgleam.co.uk)

Email: [relaxandgleam@gmail.com](mailto:relaxandgleam@gmail.com)

Tel: 07462 900171



RELAX AND GLEAM

YOUR HOME, OUR PASSION



*Discover  
something  
unique...*



Breakfasts, Lunches & Cream Teas



Large Selection of Gifts & Cards



Beautiful Flowers & Plants



Falconry Displays & Experiences



Vintage Collectables and Furniture



Art & Craft Gallery



Quilting & Felting



Speciality Cake Shop



**BRIDGE  
FARM  
BARNs**

**Telephone:**  
01449 740456

Monks Eleigh, Nr Lavenham, Suffolk IP7 7AY  
**[www.bridgefarmbarns.co.uk](http://www.bridgefarmbarns.co.uk)**

## DISCOVER SOMETHING UNIQUE

Unique gifts • Unusual Cards • Women's clothing • Lifestyle & home • Toys  
Morning coffee • Breakfast • Lunches • Afternoon Teas • Sunday Roast



**Celebrating 30 years of serving our lovely customers!**

Monks Eleigh, Suffolk IP7 7AY Open Tuesday to Sunday  
Tel: 01449 740456 • [www.bridgefarmbarns.co.uk](http://www.bridgefarmbarns.co.uk)

# Recipe of the Month

## Festive Poached Pears

*with thanks to Alison*

---

### Ingredients serves 4-6

- 1 x 750 ml bottle of fruity red wine
- 150g sugar
- 2 small cinnamon sticks
- 50g fresh root ginger sliced
- 1 lemon
- 1/4 of nutmeg finely grated
- 6 firm pears

Double cream to serve



### Method

- 1.. Add the wine, sugar, cinnamon, ginger, nutmeg the zest of the lemon and half of it's juice to a deep medium saucepan
- 2 Peel the pears and cut out the core from each base using a paring knife. Leave the stalk end and natural shape of each pear intact.
- 3 Add the pears to the wine making sure they are covered, add a little water if needed. Cover and simmer briskly, turning the pears occasionally until a deep red colour and very soft in the centre. [This will take about 1 hour.] Carefully transfer the pears to a deep bowl and set aside.
- 4 Bubble the red wine syrup briskly over high heat until reduced by two thirds. [15 – 20 mins]
- 5 Strain the syrup over the pears and serve immediately, topped with the double cream.
- 6 You could also cool and chill in their syrup for up to 2 days.  
Serve chilled or reheat gently as desired.



# BASE GARAGE LTD

**MONDAY – FRIDAY 7.30 – 6.00**

**SATURDAY 8.00 – 12.00**

- TYRES
- EXHAUSTS
- PUNCTURES
- BATTERIES
- WHEELBALANCING
- AIR CONDITIONING
- LATEST DIAGNOSTIC EQUIPMENT
- WELDING TO MOT STANDARD
- SERVICING & ALL REPAIRS TO ALL MAKES OF CARS  
& LIGHT VANS FLEET DRIVERS WELCOME
- MOT CLASS 4, 5 & 7
- COURTESY CAR AVAILABLE
- COLLECTION & DELIVERY SERVICE 5 MILES RADIUS  
OF GREAT BRICETT
- WINTER CHECKS
- HOLIDAY CHECKS



**LOWER FARM ROAD, GT BRICETT, IPSWICH IP7 7DR**

**01473 658987 / 01473 657704**

# DON'T GO HUNGRY

Are you self-isolating or in quarantine?

Has work dried up or you have very little money?

In these difficult times **nobody** should go hungry.

If you and your family are struggling to put food  
on the table, we can help.

Bildeston Food Bank is a discreet service for  
Bildeston residents.

Call us on **0333 335 5254** (local call charges)  
or email **[bildestoncsg@gmail.com](mailto:bildestoncsg@gmail.com)**  
in strictest confidence

If you can help support Bildeston Food Bank,  
we would love to hear from you too.

We need tinned and dried food and toiletries.

## Donation drop-points:

9-11 Duke Street

2 Brookfield

150 High Street

3 Manor Road

Bildeston Village Stores



## Bildeston

CORONAVIRUS  
SUPPORT GROUP

PLEASE  
TURN OVER

Does anyone have spare carrier bags please. We are running low  
at the Bildeston Food Bank. If you do, please leave them in the  
collection bin outside 9-11 Duke Street. Thank you

**Now Frying At Market Square  
Bildeston**

**Thursdays 4pm - 7.00pm**

**Fridays 11am - 1.30pm**



**Local Mobile  
Fish & Chip Shop**

**Functions Catered For  
Shows • Parties  
Weddings • etc.**

**Telephone  
01473 830771**

# **BILDESTON ELECTRICAL**

**Rewires, Extensions, Board Changes or New Installations**

**Any Alterations to Existing Installations**  
(lights, sockets, etc.)

**Contact Ian  
01449 257135 or 07754 723685**

Auctions

Clarke &  
Simpson

*Always  
open...*

Can't make it?  
All auctions are available  
for online bidding via  
[the-saleroom.com](http://the-saleroom.com)  
or [i-bidder.com](http://i-bidder.com)



#### Valuation

Probate & other valuations  
Call-in service 6 days a week

#### Special sales

Antiques & Fine Arts  
Art Deco & Retro  
Domestic & Rural Bygones  
Agricultural Collective

#### General Monday sale

Bespoke sales  
In 2020 our lots sold to 60 countries  
and registered buyers from over 70  
Acting as agents for household clearances



Clarke & Simpson Auction Centre, Campsea Ashe, Nr Wickham Market, Suffolk IP13 0PS T: 01728 746323  
[www.clarkeandsimpson.co.uk](http://www.clarkeandsimpson.co.uk) CandSAuctions @candsauctions

## COLLINS & CURTIS MASONRY LTD

*est. 1925*

### Memorial Stone Masons

*Dedicated craftsmen who  
combine traditional with new techniques*

Bespoke memorials  
Additional inscriptions  
Restoration and cleaning  
Home visits by appointment

**01473 250932**  
**[www.collinsandcurtis.co.uk](http://www.collinsandcurtis.co.uk)**



## N D ROSE

Int / Ext Decorating

- Decorating
- Wall / Floor Tiling
- Gutters Cleaned /  
Repaired / Replaced
- General Building  
Maintenance

**Local established tradesman 25  
years experience**

**Free estimates good rates  
References available**

**Tel: 01787 211042**

**Mob: 07518 040465**

**3 Fen Street Boxford CO10 5HL**

# BILDESTON PARISH COUNCIL



**Draft minutes for the Parish Council meeting held Monday 8 November 2021, 7.00pm, at the Baptist Church Hall, Duke Street, Bildeston,**

**Present:** Cllr Alex Banks, Cllr Andrew Guttridge, District & County Cllr Robert Lindsay, Cllr Richard Lester, Cllr Ray McCann, Cllr Virginia Tuck, 0 x members of the public, Clerk – Angela Chapman

## **C186/21/22 Chairman's Welcome & Apologies:**

Councillor Andrew Guttridge chaired the meeting in the absence of the Chairman and welcomed all to the meeting.

Apologies: Cllr Ashley Hubbard, Chairman Peter Hutchings, Cllr Sarah Leigh-Hunt. Apologies accepted.

## **C187/21/22 Declaration of pecuniary and non-pecuniary interests:**

Cllr Richard Lester – Kings Pightle Nature Reserve, St Mary's PCC; Cllr Alex Banks – Bildeston Sports Field & Pavilion.

## **C188/21/22 Requests for dispensations in respect of pecuniary interests**

- None.

## **C189/21/22 Minutes of the meeting held 11 October 2021,**

approved and signed as a true record.

## **C190/21/22 Adjournments**

– meeting adjourned at 1903hrs.

Receive reports from County and District Councillors, and consider any matters raised by Local Parishioners.

### **County & District Councillor Robert Lindsay:**

RL – report sent.

20mph design, nothing to report, will chase.

JLP delayed, Cllr Andrew Guttridge reported the Inspector is not happy with policy part of housing allocations. May visit the unallocated sites, not allocated sites. Developers questioning sites not included. Building on Belle Vue Park Sudbury, question over green space. Babergh DC now have 5+ year land supply, now approx. 6.86 yrs. Plan now under consultation.

Lorry route consultation out.

County Council - Green/Lib Dem got support for local electric bill. Bill to try and level playing field to allow solar panel generated power to sell back to the community was approved.

Face coverings in schools to be reinstated.

Sizewell C – approved subject to conditions.

Acknowledge efforts for clearance of repeater sign in High Street.

Reconvene 1941hrs.



## **C191/21/22 Planning Applications**

### **Planning Appendix A – Items for comment by the Parish Council**

DC/21/04459

Proposal: Householder Application - Erection of greenhouse and shed.

Location: Dukes Hall, Duke Street, Bildeston, Suffolk IP7 7EW

**No objection.**

#### **DC/21/05941**

Proposal: Householder Application - Erection of single storey rear extension (following demolition of existing); Erection of front porch extension including bay window canopy and conversion of existing garage to form home office and erection of retaining wall.

Location: 174 High Street, Bildeston, Suffolk, IP7 7EF

**No objection.**

### **Planning Appendix B – Items determined by Babergh District Council**

#### **DISCHARGE OF CONDITION(S)**

##### **TOWN AND COUNTRY PLANNING ACT 1990**

Proposal: Discharge of Conditions Application for DC/21/02509- Condition 3 (Construction Management Strategy)

Location: Stables Cottage, High Street, Bildeston, Suffolk IP7 7EY

**Approved.**

#### **DC/21/04075**

Proposal & Location of Development:

Householder Application - Construction of weatherboard cladding to part front, side and rear elevations.

Location: Lucys Cottage, 9 High Street, Bildeston, Suffolk IP7 7EX

**Granted.**

#### **DC/21/03879**

Proposal: Planning Application. Erection of a detached single storey staff/managers dwelling with rooms within the roof, incorporating an Air BnB bedroom and shower room.

Location: Bildeston Village Stores and Post Office, 118 - 122 High Street, Bildeston, Suffolk IP7 7EB

**Application withdrawn.**

## **C192/21/22 Projects and Progress Reports**

a) **Joint Local Plan Examination representations** – Cllr Andrew Guttridge reported the JLP on hold,

see **C190/21/22** above.

b) **Quiet Lanes project** – Cllr Virginia Tuck – nothing to report.

c) **20mph project/ design costs/ funding** – nothing heard from SCC, C Robert Lindsay will chase.

d) **‘Heating Bildeston’ update** – Cllr Richard Lester – group drafted application to tender, agreed 15 Nov deadline, the draft of tender confirms the objections and quote.

e) **Bildeston flag design** – unanimously agreed not necessary, if we need a different flag to the Union Jack, we could use the Suffolk flag.

f) **4 year work plan review** – defer to December meeting

**g) Update on village amenities –**

- Jayne Harrison will prepare Market Place for the Remembrance Service on Sunday 14 November, remove cars, put up no parking signs, borrow chairs from Baptist church. Cllr Richard Lester will help on the morning before the service.

- Anti-social behaviour in village – police not interested, but all incidents have been reported. Clerk to distribute details of the Police forums held locally. Clerk to contact other villages to ask how they deal with ASB. Also contact the Safer Neighbourhood Team at Hadleigh station to invite someone to come to a PC meeting to advise on ASB in village.

- Cllr Richard Lester requested the Clerk contact Lindsay and Offton & Willisham Parish Councils for information on EV charging points, which both villages have at their village halls.

**h) Approval of bench location at Grove cemetery – approved**

**i) Queen's Jubilee celebrations June 2022 –** PC approved proposed street party in Chapel Street.

Group to be gathered by 2 residents who proposed. PC likely to offer funding.

**j) Christmas tree –** new robust heavy-duty lights to be purchased. Volunteers to help, parking spaces in the Market Place to be cleared the day before. Tree holder to be made available the previous day in readiness. Cllr Andrew Guttridge has the necessary nuts and bolts, lights and star and the waterproof enclosure. There will no carols in the Market Place due to COVID.

**C193/21/22 Administrative, Finance & Governance Reports**

a) payment for approval – payment sheet distributed; payments approved. Cllrs Andrew Guttridge and Virginia Tuck to authorise. Chair signed Scribe accounting reports.

b) approve and sign annual CIL report – Cllr Andrew Guttridge signed.

c) Land management for 2022 season –agreed the PC need to realise good value for the JD mower.

Land management for the 2022 season, to continue with current arrangement for the next season and write a specification at the end of 2022, if necessary. The lower cemetery at St. Mary's church will soon be the responsibility of the PC and will need to be added to the work list.

**C194/21/22 Matters to be brought to the attention of the Council**

The broken step on the footpath parallel with Squirrels Mill Close repaired in good time.

**C195/21/22 Items for agenda**

PC to write to the landowner who garden bounds onto the common land.

Cllr Richard Lester suggested due to COVID numbers currently all Councillors should be encouraged to carry out a lateral flow test before each meeting.

Cllr Ray McCann – kerbs on High Street near Old Post Office and The Crown, need to be dropped kerbs as elderly residents and parents with pushchairs for better access.

Clerk to raise the issue with CC/DC Robert Lindsay. Report fallen hedging bank on Wattisham Rd where the pavement has narrowed, on the SCC online reporting tool.

Meeting closed 2040hrs.

# BILDESTON PARISH COUNCIL VACANCY

The Parish Council is made up of nine elected or co-opted members who volunteer their time for the good of the community without receiving payment for their services. Their diverse backgrounds, skills and experience are a great asset to the parish.

The role of the Parish Council is to represent the interests of the whole community, engaging with local residents, discovering the needs of different groups in the community, such as the young and elderly, and lobbying on behalf of Bildeston. The Parish Council is the tier of local government that is closest to local people. Babergh District Council and Suffolk County Council form the other two tiers of local government that cover Bildeston. Details of their respective roles and responsibilities can be found in the Council services section of the website [www.bildeston.org.uk](http://www.bildeston.org.uk) Parish Councillors are subject to re-election every four years unless there are the same number (or less) of Councillors to vacancies in which case those nominees will be co-opted on to the Council. All Members of the Parish Council are required to comply with a Code of Conduct in the performance of their duties. If you have any questions, or think you would like to join the Parish Council please contact the Clerk on [clerk@bildeston.suffolk.org.uk](mailto:clerk@bildeston.suffolk.org.uk) or 07593 584209. Angela Chapman Clerk to Bildeston Parish Council

## GRATEFUL THANKS FROM THE CHURCH

St. Mary Magdalene Church would like to thank everyone who came to the Christmas Fayre on Saturday 13th November.

It was a special event, even more special as it wasn't possible to hold the Fayre last year due to COVID lockdown. Church finances are always under pressure these days with no central support ( Government and Church of England ) so we are on our own and a day like that Saturday really, really helps.

We thank all the Church elves for all their hard work, we thank all stall holders for their support and most of all the Bildeston Community for your generosity!

Rev Cattermole Church Wardens and PCC





Naughton PCC

# Christmas Quiz

Take part for a small donation and  
be in with the chance to win a  
Christmas hamper

Please contact  
[naughtonpcc@gmail.com](mailto:naughtonpcc@gmail.com) for  
details on how to enter

Entries to be returned by 20th  
December

ALL PROCEEDS TO  
ST MARY'S CHURCH NAUGHTON

GOOD LUCK!

# KINGS PIGHTLE NATURE RESERVE TRUST

## CHAIRMAN'S ANNUAL REPORT 2021

Welcome to our Annual General Meeting. I would like to begin by thanking my fellow Committee members for their support and practical help over the past twelve months.

The reserve has continued to be visited and supported by the people of Bildeston. As the restrictions on Covid eased we were able to open to visitors as usual.

No meetings of the Committee were held from November until April due to Covid restrictions.

The main access bridge had been replaced during lockdown and two posts repaired on the approach bridge.

The Charity Homestart has been making regular visits to the Reserve.

The Annual Balsham Bashing event was cancelled due to the weather, regular maintenance of overhanging branches etc has been ongoing by visitors to the reserve.

A wildlife camera was installed in 2020 and has been providing some very interesting images of the wildlife visiting the reserve.

Fundraising events have been restricted however a successful quiz was held last week. We hope to have more events in 2022.

Unfortunately there have been incidents of minor vandalism in the birdhide, the latest being last week. One incident resulted in repairs having to be made to the windows. We will report this damage to the police.

Finally I on behalf of the Committee I would like to thank 2 members who are retiring this year for all their help and commitment - Ashley Hubbard, Diane Drury.

We would always welcome any member of the village who would like to serve on the Committee and help support our work in maintaining the reserve .

Also we welcome volunteers who can be called on for our occasional work parties to help tidy up the nature reserve or clear scrub areas. Please contact the undersigned if you would like to help with some healthy outdoor team work.

### HENRY MORPHEW LEGACY

We continue to be responsible for administrating the Henry Morpew Legacy on behalf of the village and during the past year no applications for grants were received

We will welcome any applications for funding which qualify under the terms and spirit of the legacy, as we know that Henry would have wished his generosity to be used to benefit the whole village

Sue Noakes

October 2021

Contact [sue@jacksfarm.co.uk](mailto:sue@jacksfarm.co.uk)



# COUSINS & SON BILDESTON LTD

available to carry out all your building requirements  
from  
**Renovations / Alterations / Extensions**  
to  
**General Repairs**

Please contact Paul for a free estimate

01473 658919 or 07876 244461

or email [paul.cousins268@btinternet.com](mailto:paul.cousins268@btinternet.com)



- ★ Professional finish at reasonable rates
- ★ Clean and tidy lady decorator
- ★ Honest, reliable service

Tel: 07895 277357

Email: [claire.marks@housetohomedecorating.co.uk](mailto:claire.marks@housetohomedecorating.co.uk)

Web: [www.housetohomedecorating.co.uk](http://www.housetohomedecorating.co.uk)

## Choose



### Mobile Eco Refill Shop

**We are coming to Bildeston  
on the second Thursday of  
each month from  
8.30-10.30am  
so pop and see us in the  
market square.**

Simply bring your empty bottles along and  
we can refill them or purchase prefilled  
reusable bottles ready for next time.

Try our zero and low waste refilling station for  
eco-friendly and vegan household cleaning and  
laundry liquids and hair and body products.

Buy what you need without unnecessary  
packaging.

For orders and more information visit :

[www.chooserefills.co.uk](http://www.chooserefills.co.uk)

Free Delivery for orders over £10

# CLOSURE OF CHURCH GRAVEYARD

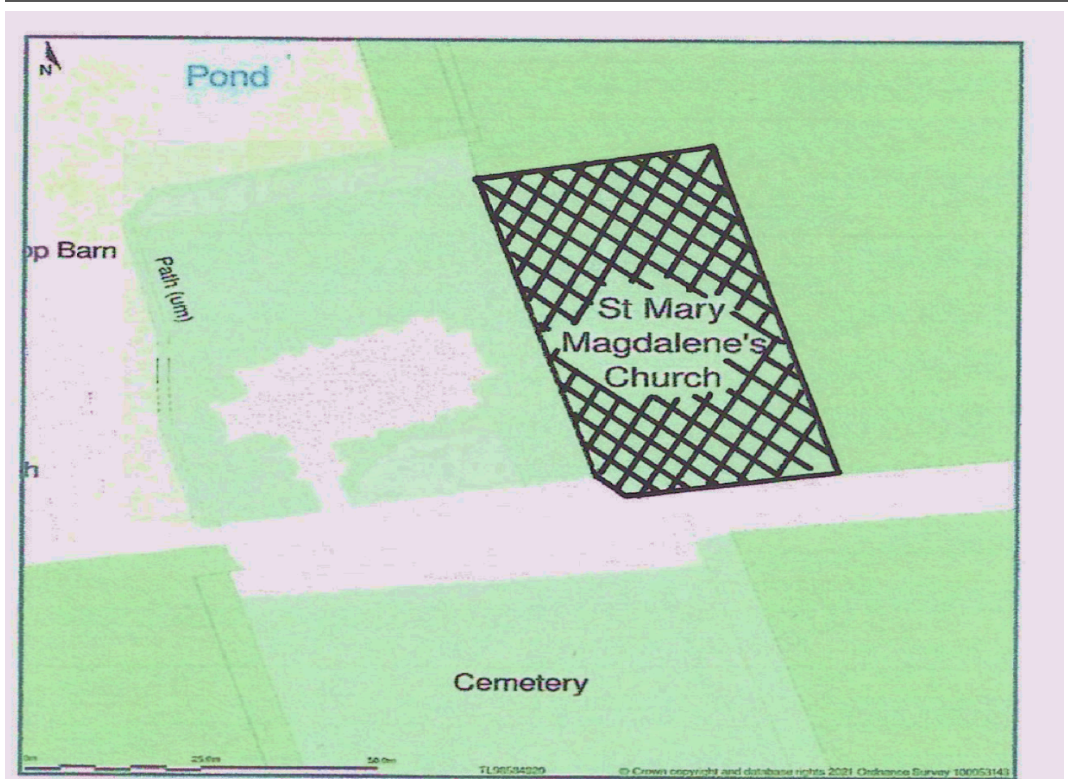
## Closure of St Mary Magdalene's Churchyard, Bildeston, Suffolk

Notice is hereby given that it is the intention of the Secretary of State for Justice, acting on an application by the incumbent and churchwardens, to apply to the Privy Council for an Order requiring the discontinuance of burials in the above churchyard.

Provision would be made for the following exceptions to exceptions: -

- a. in any vault or walled grave in the churchyard, burial may be allowed but every coffin in such vault or grave must be separately enclosed by stonework or brick work properly cemented;
- b. in any existing earthen grave in the churchyard, the burial may be allowed of the body of any member of the family of the person or persons previously buried in that grave, but no part of the coffin containing the body shall be less than one metre below the level of the surface of the ground adjoining the grave; and
- c. in any grave space in which no interment has previously taken place, the burial may be allowed of any person for whom, or any member of the family for which that grave space has been reserved and appropriated, with the exclusive right of burial there, but no part of the coffin containing the body shall be less than one metre below the level of the surface of the ground adjoining the grave.

Any representations about the proposed closure should be sent to the Coroners and Burials Team, Ministry of Justice, 102 Petty France, London SW1H 9AJ (quoting reference CC/OCT21/017) within 21 days of this publication.



**Natalie Mottram**  
Physiotherapist  
HPC & CSP Registered



- Muscle and joint problems
- Neurological conditions
- Stroke rehabilitation
- Fall prevention & balance rehabilitation
- Pre and post-surgery treatment

For more information  
and rates please contact:

T: 01787 248061

M: 07758255583

E: nataliejmotttram@gmail.com



Physiotherapy Clinic: The Beauty Gallery,  
3 High Street, Lavenham, CO10 9PX

# ANDYS LOGS

Well Seasoned Barn Stored Hardwood Logs

Loads Delivered or Pick Up

Wood cut to size for any Heater

Large bags of wood collection only

**CALL ANDY 07881 684687**

*\*Bags of wheat for Chicken feed also available collection only*

## CHIMNEY SWEEP

### ECO SWEEP CHIMNEY SERVICES

NEW POWER SWEEPING METHOD USED  
FOR A MORE THOROUGH CHIMNEY CLEAN  
THAN BRUSHES.

INDUSTRIAL HEPA FILTERED VACUUM.

FULLY INSURED.

INSURANCE RECOGNIZED CERTIFICATES ISSUED.

SPOTLESS, RELIABLE AND FRIENDLY SERVICE.

ALL CHIMNEYS, WOOD BURNERS, AGA, BOILER

FLUES SWEEP.

GUILD OF MASTER SWEEPS CERTIFICATED MEMBER.



**TEL. 01359 232335**

# Stuart Walker

## Decorating, Painting & Refurbishments



**A locally based company offering an honest and reliable service**

**Painting - Decorating - Refurbishments - Repairs**

**All work considered indoors & out! Fully Insured & free quotations provided**

Please contact Stuart on Tel: 07711 606464 or 01449 740387

Email: [stuma1@hotmail.co.uk](mailto:stuma1@hotmail.co.uk)

FREE ESTIMATES

FULLY INSURED



**JL ROOFING**  
**FLAT-ROOFING AND EDPM**  
**RUBBER-ROOFING SPECIALISTS**  
WE COVER ALL OF MID SUFFOLK

**JAMIE: 07547594699**

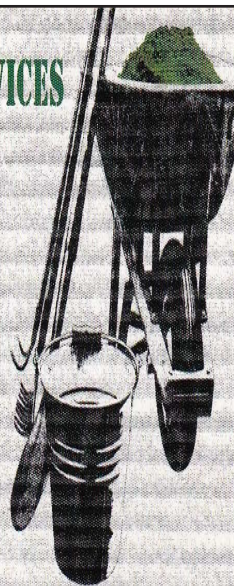
**AARRON: 07894627354**

**JLROOFINGSERVICES@YAHOO.COM**

**J M GARDENING SERVICES**

**FOR ALL GARDEN  
MAINTENANCE**

**NO JOB TOO SMALL**



**JOHN MORGAN**

**TEL: 07855 855994**

**[johnmorgan007@btinternet.com](mailto:johnmorgan007@btinternet.com)**



# THE FLOWER SHOP

*Your local independent florist*

Creating beautiful  
arrangements for  
all occasions using  
only the freshest,  
seasonal flowers

Visit us in store  
to view our flowers,  
plants and  
homeware items,  
or order by phone  
or online

Local and nationwide  
deliveries

• ESTABLISHED 2013 •

[www.theflowershopkm.com](http://www.theflowershopkm.com) THE FLOWER SHOP AT KERSEY MILL Near Hadleigh IP7 6DP 01473 805156

## Eco SYSTEMS

### Tree and Grounds Care

**Tree Surgery, Felling, Dismantling,  
Hedge Maintenance, Stump Grinding,  
Woodland Creation,  
Commercial Grass Cutting**

**Fully Insured**

**NPTC qualified Council approved contractor  
FREE no obligation quotations and advice**

**DAN STANMORE**

**Bildeston 01449 741255 • Mobile 07980 290781  
Woolcombers, Duke Street, Bildeston IP7 7EW**





# **BILDESTON BAPTIST CHURCH**

Duke Street, Bildeston

Email: bildestonbc@gmail.com

**Service every Sunday morning at 10:45**

**Lunch Club 12:30 – First Wednesday each month**

**Please ring 07584 189356 to reserve a place**

**Community Coffee Centre - Fridays 9:15 to 11:30am**

**Strollers & Striders - Mondays 9:45am**

**Ring 07584 189356 or 07901 563281 for details**

**All are most welcome.**

Enjoy meeting old and new friends at any of these events

## **BILDESTON BELL RINGING**

Bell ringing at St. Mary Magdalene! How about joining our small group of bell-ringers? We meet every Tuesday evening at 8.00pm, and everyone (from complete beginners to more expert ringers) is very welcome. Spend an enjoyable hour meeting friends, getting a moderate exercise workout and mentally stretching your mind with some mathematical combinations? Campanology rules OK?

For more details contact:

Neil Ashwell 01449 741370 or

Martin Rodgers 01449 743120





**Brett Valley Benefice**  
**Christmas Pastoral Letter**  
**December 2021**



*"For to us a child is born, to us a son is given, and the government will be on his shoulders. And he will be called Wonderful Counsellor, Mighty God, Everlasting Father, Prince of Peace."* Isaiah 9: 6 -7

As you read this letter the church has just begun the season of Advent. The time when there is a profound sense of anticipation and of hope. As we all make our plans for Christmas, hoping they are going to be better than last year. Attending the different Christmas services with our families such as the Carol and Crib services going back to a bit of familiarity. Yet we know there are so many events still going on in the world, the pandemic, destruction of our planet and the refugee crisis across so many countries that can cause so much despondency.

Where is our hope, how does the story of a baby born in a stable have to do with today? The Christmas story is very modern and multicultural. An unmarried mother, homelessness and sleeping rough, foreign visitors, travelling from afar, and then a very modern parable with refugees fleeing persecution seeking shelter in a far-off land. So, what is the problem? Christianity is being increasingly marginalised across Europe and, for that matter, persecuted in many countries across the globe. Is it because the true message of Christmas can be provoking to our modern, selfish way of thinking because it requires a response from us? The message of the angels is explosive, and it would transform our world for the better, if only we let it. 'Christ is born in Bethlehem.' It demands a response. That response is either to acknowledge His lordship over history and to bow down in worship, or it is to judge the claims made of this baby as false and to move on, ignoring Christmas altogether.

Not many want to do that, we anticipate the celebrations of Jesus' birth, not only because it is a great excuse to be together and have fun, but also because his birth gives us hope. Hope for the future. Hope in this most difficult world where we feel confused and despondent.

Many have lost loved ones in the last year and Christmas will be difficult for them and yet in Christ we are given an inner peace that no one else can give. The light which first shone from Bethlehem's stable will never be extinguished. It continues to shine all around our world, usually at its brightest when we are facing the greatest pain. Jesus promises to be there with us in whatever it is that life brings; in the happy times and in the sadness; in the pain and in the joy.

At Christmas, God welcomes us all to celebrate the birth of His Son, the One who brings hope to the world. God invites us to come in because He has made sure that there is room for us all.

I wish everyone a very Happy and Holy Christmas and a peaceful New Year.

God Bless

Revd Elke



## Services in the Brett Valley Benefice

**December 2021**



<b>Date 2021</b>	<b>Time</b>	<b>Service</b>	<b>Church</b>
<b>Sunday 5<sup>th</sup> December</b> <b>2<sup>nd</sup> Sunday of Advent</b>	11 am	Holy Communion	Semer
	3pm	<b>Carol Service</b>	Whatfield
<b>Sunday 12<sup>th</sup> December</b> <b>3<sup>rd</sup> Sunday of Advent</b>	11am	Holy Communion	Bildeston
	6pm	<b>Carol Service</b>	Naughton
<b>Sunday 19<sup>th</sup> December</b> <b>4<sup>th</sup> Sunday of Advent</b>	3pm	<b>Carol Service</b>	Semer
	6pm	<b>Carol Service</b>	Nedging
	6.30pm	<b>Carol Service</b>	Bildeston
<b>Wednesday 22<sup>nd</sup> December</b>	6pm	<b>Carol Service</b>	Lindsey
<b>Friday 24<sup>th</sup> December</b> <b>Christmas Eve</b>	11am	Morning Prayer	Naughton
	4pm	<b>Crib Service</b>	Bildeston
	5pm	<b>Crib Service</b>	Whatfield
	11pm	<b>Midnight Holy Communion</b>	Bildeston
<b>Saturday 25<sup>th</sup> December</b> <b>Christmas Day</b>	9.30am	Holy Communion	Semer
<b>Sunday 26<sup>th</sup> December</b> <b>St Stephen's Day</b>	8am	Holy Communion	<b>St Mary's Church, Hadleigh</b>
	10.45am	Holy Communion	
Hadleigh Deanery Services			



### **Lunch club**

Baptist Church 12.15 for 12.30pm start.....1st Wed every month

### **Craft it Together**

01449 741772 for details..... Restarts Monday 4th October

### **Strollers & Striders**

9.45 - various starting points 07584 189356 or 07901 563281 for details.....Every Mon

### **Family Group - 10am-12pm**

07542 785649 to book a space.....Every Tuesday

### **Community Coffee Centre**

Baptist Church 9.15 - 11.30am.....Friday mornings

### **Church Bell Ringing Practice**

St. Mary Magdalene church bell tower 8.00 to 9.15pm.....Every Tuesday

### **Bildeston Carpet Bowls Club**

7.30pm Chamberlin Hall. Contact Mike 01284827688.....Every Tuesday

### **Bildeston Community Cycling**

Market Square 9.30am.....Sat 11th

### **Ladies Club**

Christmas Meal Chamberlin Hall 7.00 for 7.30 .....Thurs 9th

### **Waytes Carols**

Chamberlin Hall 7.30pm.....Wed 22nd

**Please stay Covid cautious and careful,  
especially in closed spaces or crowds.**

**It is your option, in most situations, to wear a face mask.**

Please tell us about your forthcoming events in **January 2022**

email: [editor@bildestonbugle.co.uk](mailto:editor@bildestonbugle.co.uk)

**deadline 17th of every month**



When you're finished with this Bugle please pass it on or recycle it.