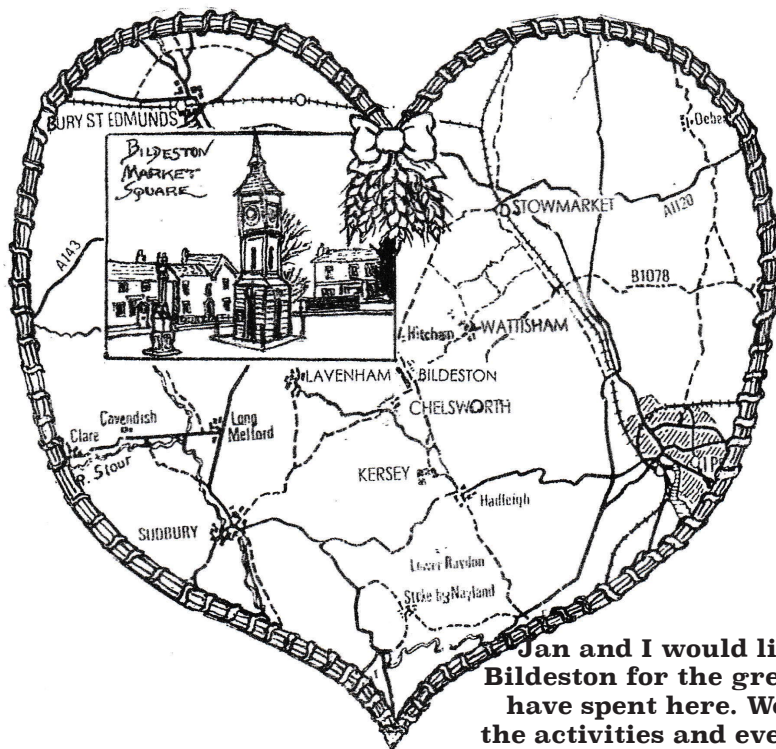


Issue number 370

August 2021



**This issue kindly
sponsored by -**

Jan and I would like to thank
Bildeston for the great times we
have spent here. We've enjoyed
the activities and events like the
Beer Festival, BNatural, Remem-
brance Sunday, litter picking
and the Friday coffee mornings
at the Baptist Church etc.
In that time, we have met some
truly wonderful people.
Jan, Kris and Rosie the dog,
wish everyone in Bildeston good
health and a bright future.

**The village magazine produced for the people of Bildeston
online in full colour at
<https://bildeston.org/bugle-village-magazine/>**

Bildeston Noticeboard public group | Facebook



BILDESTON BUGLE ADVERTISING AND FREE CONTRIBUTION INFORMATION

Our aim is to provide every resident and organisation in Bildeston with a magazine which provides information of local interest FREE OF CHARGE. To that end we are required to be efficient in the space we use to print free notices. We endeavour to include interesting items, announcements for events open to the general public for free and items of a charitable nature free of charge. Ongoing free announcements need to be reduced to minimum size or make a contribution towards printing costs. Please check with us before submitting your advert and ALWAYS provide us with all of your contact details in order for us to send an invoice and receipt.

email: editor@bildestonbugle.co.uk

Sponsor a 'Bugle' - £15 per issue

and have a brief message of your choice printed on the front of the Bugle

Advertising Rates

	1 issue	12 issues	
1/4 page	£5.00	£35.00	65mm W x 92mm H
1/2 page	£10.00	£60.00	134mm W x 92mm H
Full page	£15.00	£110.00	134mm W x 190mm H

THE SMALL PRINT

All adverts, payments and items are required before the 17th of every month for inclusion in the following month's issue (except December before the 15th).

The earlier free contributions are received the greater the chance of inclusion.

The Editorial Team are not responsible for the accuracy of articles or adverts and reserve the right to alter, shorten or refuse any item submitted for publication.

Ask for BACS details or make cheques payable to Bildeston Bugle and send to:

The Editor, Bildeston Bugle, 14 Squirrells Mill Rd, Bildeston IP7 7DY

If we do not receive payment by the 17th of the month your advertisement may NOT be included

The Bildeston Bugle Management Team is:

Alan Jacobs (Editor) 01449 741645

Tricia Baldwin (Marketing & Advertising Revenue)

Christine Hubbard (Treasurer) 01449 740633

Stuart Law and Alison Sims (Assistant Editors)

Pam Weaver (Distribution)

Lisa Chinery (Printing Assistant)

ED'S COMMENT

A little while ago the Bugle was contacted by Louise Bissett, Bildeston Health Centre Practice Manager, to put a piece in this Bugle concerning the practice decision to keep the current protocols and secure Covid procedures for a while longer, until such time as they deem it safe to revert to open surgeries and allow more people in to the waiting room.

Louise had already posted the item on to the Bildeston Facebook Noticeboard and was anxious that the message got across as much as possible. No sooner had the message been posted than Chris Clarke, who has a heart the size of the Market Square, picked up on that anxiety and posted a message of her own. She simply encouraged people to show what they felt about our Health Centre, how they valued it and how grateful they are for the staff's unstinting service to our community. People rushed to their tablets, phones and any other device and messaged like it was a new olympic sport!

Such wonderful sentiments created the longest thread the village Facebook has seen for ages. Well done Chris and well done everyone. Louise posted a thank you on behalf of the staff, but it is worth remembering how fortunate we are to have such a highly valuable and clearly valued health service in the centre of our community. It is a major employer with 30 staff in total, each a hugely vital part of a well run organisation that is simply first class. We have been so fortunate in having a surgery that prided itself on open surgeries, offering access to every other part of the NHS. The anxiety comes from having to respond to the adaptations in procedures due to the Covid restrictions and the concern that we wish it would go back to exactly how it was before.

Coincidentally, BBC Look East wanted to run an item about the pressures on Suffolk GP surgeries, and asked central casting if Docotor Ross from ER was available. They were told, "No, that was George Clooney acting!" However, the next best thing was Dr Mark Hainsworth from Bildeston Health Centre who is a doctor, not acting and 'scrubs' up very well!

Monday 12th July saw Dr Hainsworth duly interviewed inside the waiting room. Dr Hainsworth explained the difficulties around doing things how they used to be done pre-Covid, in a room that can usually seat 50 but only 6 when social distancing is imposed. He explained how the practice now runs to keep staff and patients covid safe. The numbers of patients per GP have leaped dramatically recently to around 2,300 patients per GP, and that's rural as well as urban. GP practices in England carried out 31.5 million recorded patient appointments in April, figures from NHS Digital show. The estimated appointment numbers include 7.5 million Covid vaccines delivered largely by practices. GPs saw 12.4 million patients, with other members of the practice team doing 10.5 million appointments. Well over half – 54.8%, of patients were seen face to face. Bildeston Health Centre is a jewel in the village crown and, yes, Dr Hainsworth, Louise and all the staff, in whatever role, we are eternally grateful. Thank you so much.

LAXFIELD HOUSE NURSING HOME

BRENT ELEIGH, Nr LAVENHAM, SUDBURY, SUFFOLK

Situated in a quiet village location with beautiful gardens, offering residential and full nursing care for elderly people.

A highly trained team of nursing sisters and care staff provide excellent nursing care with kindness and compassion, ensuring privacy and dignity at all times.

*** Long or short term respite care available ***

A warm welcome is always extended to all visitors



All rooms are well appointed with en-suite facilities.
Nurse Call System, Passenger Lifts, Various Public Rooms

This nursing home was established over 25 years ago by the current proprietor and family with ongoing input and management.

**Enquiries to - Mrs J. Carne RGN, RM, (Matron)
Mrs E. P. Knight RGN, RM, Mr N. Knight (Proprietors)**

Telephone (01787) 247340 / 495

**enquiries@laxfieldhouse.co.uk
www.laxfieldhouse.co.uk**



Member of the Registered Nursing Home Association

Bildeston Primary School

Learning and Growing Together



Suffolk Owl Sanctuary Visit

Children in Goldcrest and Robin class enjoyed a trip to the Suffolk Owl Sanctuary on Tuesday 22nd June. They had a wonderful day whilst enjoying minibeast hunts and the owl flying display.

Baylham Rare Breeds Farm Visit

Children in Kingfisher class enjoyed a trip to Baylham Rare Breeds Farm on Thursday 24th June. They toured the farm and visited all of the animals and took part in some fire building.

Arger Fen Trip

Year 5 pupils enjoyed another summer term visit to Arger Fen. They took part in lots of forest school activities. The weather was kind to them on both occasions.

Sunflower Planting

Robin class enjoying planting their sunflowers in the front garden!

U11 Quad Kids

Year 6 pupils joined in with a Quad Kids event at Hadleigh High School on Friday 25th June. It was a great opportunity to catch up with their pyramid friends after such a long lockdown!



Year 6 Leavers'

Year 6 pupils enjoyed a final trip together at the Suffolk Ski Centre taking part in Tobogganing with lunch.



Camp Fire Wild Adventure

To end our summer term, year 5 & 6 enjoyed a camping experience in the school groups joined by Whatfield pupils. They took part in a number of wide games and enjoyed their meals on an open fire! We wish our year 6 pupils every success at high school when they start in September.

If you are considering Bildeston Primary as a school for your child, we would welcome a visit. Please phone the office on the number below. We would love to meet you.

Bildeston Primary School
Newberry Road, Bildeston, Ipswich, Suffolk, IP7 7ES
Telephone: 01449 740269 Website: www.bildeston.suffolk.sch.uk



Chairman Jayne Harrison welcomed everyone and thanked them for their attendance. She explained the format of the AGM meeting.

Jayne introduced Kevin Bayley the treasurer.

- Treasurer's report-Kevin Bayley

The Treasurer talked through the end of year accounts and gave details to clarify the figures. He has kept a complete and transparent record of all transactions.

These accounts along with the trustee's report will be sent to the charities commission and were given to all those who attended.

They are open to public inspection by arrangement.

- Questions were taken from the floor and answered by the Treasurer.
- Election of Trustees/committee members for 2021-2022

Two of the current committee members stood down, Debbie Bayley and the treasurer Kevin Bayley.

We would all like to thank Debbie and Kevin for their support and commitment to the Hall.

Four new trustees/committee members stood to Join, Nicole Mackintosh, Jean Wimpres, Sue Fell and Peter Hutchinson joined as committee members, welcome aboard.

Peter has Joined as a representative for the parish council.

Sue Fell will be taking on the role of bookings clerk.

Sherri Mcnamara stood for the position of treasurer there were no objections and was appointed as the Treasurer.

Neil Wimpres notified us that this will be his last year as a trustee and committee member.

The Chairman thanked everyone again for attending and brought the meeting to a close at 20:00

BREAKING NEWS...



Zumba Gold is set to return to Chamberlin Hall in September.

Watch this space

Chamberlin Hall

BILDESTON'S COMMUNITY VILLAGE HALL



To find out more call our bookings

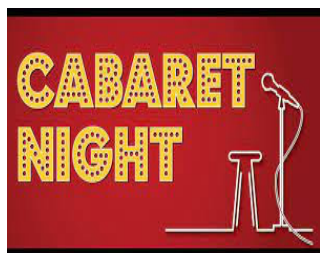
What's on in August

For bookings contact: 07716 921514 or chamberlin.bookings@gmail.com

Mondays	3.30 to 9.00pm	MLSPA Performing Arts (07957 351941)
Tuesdays	11.00 to 12.00pm	Rosies Line Dancing
Tuesdays	7.00pm	Snooker Club
Tuesdays	7.30pm	Carpet Bowls contact Mike 01284 827688
Wednesdays	6.30pm	VIPs Drama Group (call Debbie: 01449 740375)
Wednesday	7.00 to 11.00pm	Open Mike with Kev and Dave
Thursdays	6.30-7.30pm/7.40-8.40pm	Badminton tbc
Fridays	11am	Pilates for Improvers (call Claire: 07900 440141)
Fridays	12.00	Pilates for Beginners (call Claire: 07900 440141)
Fridays	6.30pm	Outdoor Bowling Social evening
Sat 14th		Market and Car Boot Sale
Sat 21st	evening	Cabaret Night

The Committee at Chamberlin Hall, would like to welcome the community back to the Hall, while still adhering to government covid guidelines. We will endeavour to provide a safe and comfortable environment and would ask all to follow our health and safety teams guidance

CHAMBERLIN HALL BILDESTON PRESENTS CABARET NIGHT!



COMEDIAN MICKY ZANY
AND SINGER ANNIKA RANDS

SAT 21ST AUGUST TICKETS £10

ON SALE AT CHAMBERLIN HALL ON

SAT 7TH AUGUST 10AM-1PM

SUN 8TH AUGUST 10AM-1PM

SAT 14TH AUGUST 10AM-1PM

SUN 15TH AUGUST 10AM-1PM

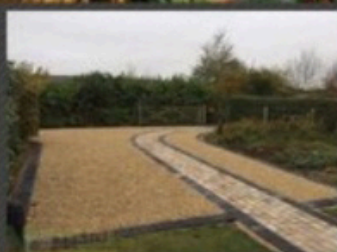
ALL ASPECTS LANDSCAPING

Fencing Paving Treecare

WWW.ALLASPECTSLANDSCAPING.CO

CALL NOW FOR A FREE NON OBLIGATION QUOTE

Follow us on Facebook



We cover all hard and soft landscaping with many years of experience

**FENCING - DRIVEWAYS - PATHS AND PATIOS - BLOCK PAVING -
GARDEN GATES AND WALLS - TURFING AND SEEDING - GARDEN
CLEARANCES - DIGGER WORK - CURB STONES - ALL TREE WORK
AND HEDGE CUTTING - GRASS CUTTING LARGE/ SMALL AREAS**

01284 624089 | 07384351944

BILDESTON BOOK EXCHANGE



**With the permission of the Parish Council
we now have a Book Exchange Bookcase
inside the Clock Tower.**

**Please add books you want to share and
take any books you find interesting.**

Let's hope it is well used and respected.

MOBILE LIBRARY SERVICE

The Mobile Library is operating as normal now, but with the following provisions:

- One customer at a time
- Everyone to sanitise their hands before entering
- staff will wear face masks and customers encouraged to do the same
- please be as quick as possible to allow others time to choose
- there is a temporary limit of 4 items per person
- all returned stock is quarantined for 72 hours
- shelves are sanitised between stops

The Bildeston stops for 30th July are as follows:

Brooksfield at 14.10 to 14.25
Market Square 14.30 to 14.45
Newberry Road 14.50 to 15.05
Paddock Way 15.10 to 16.00

Regular, one off, end of tenancy, event and deep cleaning services.
Oven and carpet cleaning on request.

Local company with outstanding
results and high standards.

Get in contact today for a no
obligation quote.

www.relaxandgleam.co.uk

Email: relaxandgleam@gmail.com

Tel: 07462 900171



Stuart Walker

Decorating, Painting & Refurbishments



A locally based company offering an honest and reliable service

Painting - Decorating - Refurbishments - Repairs

All work considered indoors & out! Fully Insured & free quotations provided

Please contact Stuart on Tel: 07711 606464 or 01449 740387

Email: stuma1@hotmail.co.uk

Bildeston Ladies Club



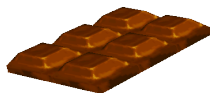
*Bildeston Ladies
are nearly there!*

Summer seems to be here at last, Covid restrictions have been relaxed and we are able to meet again very soon. Here is the plan for our first meeting on Sep 2nd, which will be a social evening with fundraising for club funds and 'bring and share' food.

We will begin with a VERY short AGM - an opportunity to check our finances, re-elect our officers and talk about ideas for the year ahead.

There will be a competition entitled "My Lockdown Life". Entries can be anything that you have done or produced since we last met: maybe a craft item, something you have grown, or evidence of a pastime such as a jigsaw!! Photographs will be accepted.

During the evening we will entertain ourselves with a few games of Chocolate Bingo - that means that the prizes will be CHOCOLATE!!



The competition entries will cost you 20p each (as many as you like) and we will vote with coins at 10p a vote and Chocolate Bingo will be 50p a game, so bring some change !!

If you would like to bring a (small) amount of food to share, we will round off our evening with refreshments and I'm sure that along the way we will all have a chance to catch up with old friends.

Just to reassure you, we will still be Covid aware with hand sanitiser, masks if desired, plenty of space and access to the outside patio area.

Until then, take care and stay safe
Chairlady - Jo Silburn - 01449 257045

SEAGER SWEEPS

Professional Chimney Sweeping Services

**Chimney Sweeping
Prices From £50**

For 2020/21

(For any standard chimney or lined stove)

Book online

www.seagersweeps.com

Tel: 01449 741595 / 07958739686

Email: info@seagersweeps.com

Bildeston, Ipswich, Suffolk, IP7



Sports Field Pavillion

Hire this facility for your
parties – fund raisers - regular classes or
activities

Ideal for children's parties with outdoor space

Kitchen / alcohol license / Hall / Outdoor space

For hiring rates & conditions contact:

Email: bildestonsportsfield@gmail.com or phone 07766527433

Transform your home!



CLADDING

WINDOWS

DOORS

CONSERVATORIES



MULTI AWARD-WINNING

Frames Conservatories

Your Complete Home Improvement Centre

Direct

Add some kerb appeal to
your home, call us now on:

01284 799470

Unit 3, Barton Road Retail Park, Bury St Edmunds, Suffolk IP32 7BE (Nr Farm Foods)

or visit www.fcdhomeimprovements.co.uk

ALUMINIUM PRODUCTS ★ CLADDING ★ WINDOWS ★ DOORS ★ CONSERVATORIES ★ FASCIAS & SOFFITS



King's Pightle News



Those of you who visit the hide will have noticed that there are now metal reinforcements around the windows. This work was needed due to squirrel damage. If on your visits or even in passing and you notice a window or the door left open please close it as that's how they discovered a food source and wanted more!! A big thank you to Norman Ruffell ably assisted by Ashley Hubbard for solving the problem.

The meadow has been cut in the recommended annual rotation to sustain and encourage the wildflowers.



Get your cameras or phones out and get snapping or look through your photos taken since September 2020 and enter the King's Pightle section in the Produce Show.

The new date for our working party is Saturday 7th August at 10.00am, so if you enjoy the nature reserve and would like to help clear it up a bit please come prepared with gloves, shears, loppers and any other useful tools. If you can't make this and would like to get involved please contact The Secretary: sue@jacksfarm.co.uk or 01449740778 or any member of the committee. Please keep enjoying this lovely space.



Bildeston Flea Market

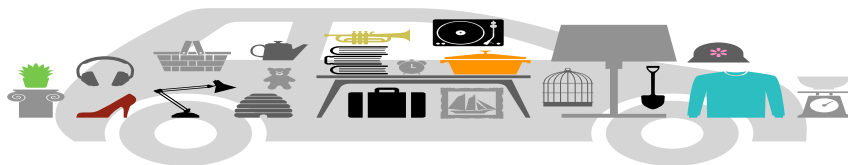
A car boot sale for...

'Pre-Loved & Vintage'
Clothes, House & Garden Items

Sunday 22nd August

10.00am - 3.00pm
on the Bildeston Sports Field

and of course there will be
Cake... !



For more information : nicolafenzl@mac.com
or to help out : elainetalbott@hotmail.co.uk

A fundraiser for Bildeston Sports Field & Pavilion



HONEY BEE'S NURSERY



Hitcham Village Hall, Hitcham, IP7 7NE

FOR CHILDREN AGED 2 – 5 YEARS

Open Mon, Wed, Fri 9.15a.m. – 12.15p.m. or 3.15p.m.

Tues, Thurs 9.15a.m. – 12.15p.m.

Early Drop Off – 8.00a.m. Lunch Club Daily until 1.15p.m.

2 Indoor Rooms and Outdoor Areas

Ofsted Registered

**Early Years Funding for all 3/4 year olds and eligible
2 year olds.**

30 hrs funding also available.

Contact: Sharon Scarfe 07947621122 (mobile) 01449 740764 (hall)

Or visit **honeybeesnursery.co.uk**

**WANT TO LEARN TO PLAY
GUITAR, BASS, DRUMS?**

***MANY CONTEMPORARY STYLES COVERED, INCLUDING
ROCK, METAL, POP, INDIE, BLUES, FUNK AND MORE.***

KEYBOARDS, VOCALS, SONG AND LYRIC COMPOSITION

MOBILE DIGITAL RECORDING SERVICE AVAILABLE



ADAM KEETON

GOOD COMPETITIVE RATES

01449 744530 OR 07914 798374

FULL DBS + LOCAL YOUTH GROUP LEADER



The Kings Head, Bildeston

(01449) 741434

It is with regret, that due to the situation I have been left in, I no longer feel able to keep the pub running long term and the pub will be put on the market for sale. In the meantime we will be open for the next two weekends in order to run stock levels down, our last day open will be Sunday 4th July.

It's the usual drill, entry will be via the back gate, scan the QR code and wait to be seated inside or find a clean table in the beer garden and you will be served at your table as quickly as possible.

I would like to take this opportunity to thank all of our customers and staff who have supported us throughout the 15 years we have been here, and the continued support during this incredibly difficult and stressful time.

I do hope to stay in the village and look forward to seeing you all in the pub again once the new owners are in.

In the meantime, stay safe and we hope to see you soon.

Sue x

All the Bugle team send their very best wishes for the future to Sue and family and huge thanks for their wonderful support during their time at The Kings Head.

Studio 66

Ladies and Gents Hairdressers



Restyling

**Foils & Highlights
Perms & Colours
Shampoo & Sets
Cut & Blow Drys**

Friendly Service from our Professional Team

Tue & Wed Senior Citizens

*****special rates*****

Opening Times Tues - Friday 9 - 5 pm Sat - 8 - 1pm



Tel 01449 740644

52A High St Bildeston IP7 7EA

Bildeston Health Centre

Dear Patients

We would like to thank you all for your patience throughout the pandemic.

We have worked hard to provide you all with open access telephone consultations where we are able to address your concerns, whilst then having seen everyone who needs to be seen face to face, and treated as many people using telemedicine as we can.

We responded to over 98% of patients the same day as they phoned and dealt with 60% of patients without the need for them to come to the surgery.

This has meant non crowded waiting rooms and easy parking. We get back to you as quickly as we can.

The government has announced that mask wearing and social distancing requirements by law will be removed from the 19th of July. This is despite rising case numbers, admissions and deaths.

We would like to remain cautious about the prospect of full waiting rooms and in the face of these rising numbers we have a duty of care to our more vulnerable patients and our staff.

We do understand that some of you prefer the old open access surgeries that we used to run pre-pandemic, but many people have made it very clear that they prefer our new way of working.

We have made a decision that we won't be returning to open access face to face surgeries in the short term, until the situation becomes clearer regarding Covid, the effectiveness of the huge vaccination effort, and other respiratory viruses.

We therefore will continue to work using the phone first system. We do see many people every day but we try to manage the waiting room to ensure that our more vulnerable patients are not put at risk.

Please could you all continue to phone first.

Why not try the e-consult service on our website

www.bildestonhealthcentre.co.uk

We will of course continue to review the data.

Please note that, given the nature of our work, should you need to come into the health centre we will require all patients to wear a mask. This is regardless of national rules etc.

We thank you again for your continued support and please be assured that we are striving to provide you with the safest and most effective healthcare.

PAINTING SERVICES

Rob Harrison

Painting & Property Maintenance

Tel: 01449 741041

Mob: 07852 795469



Green Farm

Vintage China Hire



A large selection of Vintage china, glass and other items to hire for vintage tea parties, weddings and other occasions at very competitive prices.

20% of your china hire cost will be donated to the charity of your choice.

For more information, a price list and photos, please see my Facebook page:

Green Farm Vintage China Hire

Email: carole.homer@btinternet.com

Tel: 01449 741498

Mobile: 07879265756



BusyB

Quality Dressmaking, Alterations and Ladies Formal Gown Hire

A professional bespoke service from a friendly local dressmaker, now also providing a hire service for ladies formal wear – call for an obligation free quote.

Find me on Facebook as 'Bev Busyb'

or Google Maps – search for 'BusyB'

Tel: 01449 737618 Mob: 07753 177703

email: busybev@btopenworld.com

www.busybev.co.uk



The Cinnamon Trust

The National Charity for the elderly, the terminally ill and their pets

It is widely acknowledged that pets can positively benefit the well-being of elderly owners.

For many elderly people living on their own, their pets are their reason for living.

They are constant companions - on hand 24 hours a day, every day, comforting, loving and protecting their owners - not only from outside threats, but also offering the more subtle form of protection from loneliness and despair.

Via a national network of 15,000 volunteers, the Cinnamon Trust offers the following services all over the UK to elderly and terminally ill pet owners.



• Dog Walking

- **Care** – Any day to day pet care the owner can't manage.
- **Short Term Fostering** – For pets whose owners face a spell in hospital.
- **Long Term Fostering** – For pets whose owners have died or moved to residential accommodation which will not accept pets (by prior arrangement).
- **The Pet Friendly Care Homes Register** – The Trust's guide to care homes and sheltered housing that will welcome residents and their pets.



If you are interested in learning more about The Trust and how we could help you, please contact us at:

Tel 01736 757 900

Email: volunteer@cinnamon.org.uk

Website: www.cinnamon.org.uk

10 Market Square, Hayle, Cornwall TR27 4HE

Registered charity number 1134680



Dunstone Optometry

3 Queen Street, Hadleigh

For your entire eye care needs

including contact lenses, latest Swept Source OCT eye scanner, examination of children and home visits

Frames include: Tom Davies, Tiffany, Ray-Ban & Esprit

To find out more please call in, telephone

01473 823755 or see dunstoneinsight.com





S J WILDING
GARDEN SERVICES

Garden Maintenance
General garden tidy up
Landscaping
Hedge cutting
Hedge reduction
Fencing
Turfing
Lawn care

For all your gardening needs contact Steve:

01787 583828/07885728973

steve.wilding283@googlemail.com

xSalt

IT Services

New PCs & Setup
Tuition / Remote support
Repairs & Upgrades
Wi-Fi & Networks

"Due to COVID I am focusing more on remote support, please do contact me with any enquiries." - Olly

[Website: xsalt.co.uk](http://xsalt.co.uk)

Tel: 07443439508

Email: info@xsalt.co.uk

CPH Property Services

Painting • Decorating • Refurbishments & Repairs
Fully Insured with Free No Obligation Quotations

A friendly local company with 30+ years experience

Tel: Chris - 07717059370 or 01787 210536

Tel: Paul - 07880727630 or 01449 740020

Email: chris.harman1990@gmail.com

BILDESTON COMMUNITY CYCLING

HAVE YOU BEEN CYCLING DURING LOCKDOWN?
WHY NOT CARRY ON, OR EVEN START?

Community bike ride **every Tuesday** leaving the Square at 6.45pm
for a ride of about an hour and a quarter.

Social distancing at the start and on the ride,
and riding in groups of up to 6.

Ride on quiet lanes, and walk on hills if necessary.

Speed to suit the riders, and no one ever left behind!

If you have any queries, please contact

Robin Weaver on 01449 741048.

We regret no children under 12, no unaccompanied children under 16.



POTTY ABOUT PLANTS?

Visit our garden centre
and coffee shop
in Sudbury


Perrywood

www.perrywoodsudbury.co.uk



S.A Roofing

Steven Allum

Specialising in Re-roofing, Repairs,
Flat roofing & all types of lead work

Contact: 01449 258346

07545071147

Email: sarroofing@hotmail.co.uk

Stowe Veterinary Group

For a professional caring service

Practices located in:

STOWMARKET

Stowe Veterinary Centre

01449 613 130

stoweivets.co.uk

Stowe Farm and Equine Centre

01449 776 201

NEEDHAM MARKET

The Mustard Pot Veterinary Surgery

01449 722 198

needhamivets.co.uk

IPSWICH

Ipswich Veterinary Centre

01473 555 000

ipswichvetcentre.co.uk

ELMSWELL

The Old Tea Room Veterinary Surgery

01359 241 761

elmswellivets.co.uk

BURY ST. EDMUNDS

Moreton Hall Veterinary Centre

01284 747 000

moretonhallivets.co.uk



Independent practices with a personal approach



KGT Fencing

For All types of fencing and fencing repairs

Also grass and hedge cutting

Gardens cleared

Guttering repairs and clearing.

Phone 07813 571820

email kgt417@gmail.com.



Paul's Carpentry

Paul's Carpentry

- Decking
- Pergolas
- Window repairs
- Sheds Built
- Fascia and Bargeboards
- Doors replaced
- Shelving
- Bespoke Wardrobes
- Handrails replaced
- Understairs Cupboards

Mobile: 0779 234 0365

Tel: 01449 616888

email: paulhb100@btinternet.com



PHYSIOTHERAPY AND PILATES



Claire is an experienced
Physiotherapist and certified
Pilates Instructor.

Services offered:

- Physiotherapy
- Womens Health Physiotherapy inc MummyMOT
- Running Analysis
- Sports Massage
- Pilates 1:1
- Pilates classes (BILDESTON & Hadleigh)
- Home visits

PHYSIOTHERAPY CAN HELP:

- Muscular aches and pains
- Low back pain
- Hip and pelvic pain
- Neck pain
- Joint pain or sprains
- Repetitive strain injuries
- Nerve pain
- Ante and post natal pain
- Pre- surgery



Clinic Address:
Kersey Mill
Kersey
IP7 6DP

www.fitframephysio.com

Tel: 07900440141

E: Claire@fitframephysio.com

July 2021.

Dear Sirs,

*It is unsurprising, and depressing (in equal quantities) to read that the Parish Council, and the **Keep Bildeston Beautiful** (the local NIMBY pressure group) both object to the recent proposals put forward by the new owner and developer of the Land at Artiss Close, on the Ipswich Road.*

I was responsible for the original application for housing on the site, and this plot of land had been in my family's ownership for over 400 years. I was very conscious of the impact that housing and further development would have on the village of Bildeston. As a stakeholder in the fabric and character of the parish, I felt keenly responsible for the outcome of the application. To apply for planning permission in the first place was not a decision I took lightly. My original intention was to work with a fantastic local housebuilder, and jointly see out the scheme, working as a Joint Venture. Due to the hostility and overwhelming delays bought on by the actions of the two aforementioned groups, this option was no longer tenable.

From a very early point, the actions of both aforementioned organisations were clearly immediately extremely hostile to our proposals. At no point was there any attempt to converse with us as the landowners and collaborate on what would actually benefit the village, despite many invitations to do so. Over several years we made numerous presentations in person, attending Parish Council meetings, and hosting public conversations in the village, offering at all times an open approach to what and how the site could be best utilised to assist local people and develop a great scheme. One that added value to the surrounding environment. At every single possible junction, a uniform zero-tolerance policy was upheld, and it was made very clear to us that there would be no offers to support any scheme, even if designed uniquely for the village. This was (and is) extremely regrettable.

Planning policy in much of the UK is unfortunately almost exclusively in the hands of very small minority of similarly minded, financially secure, elderly people, and who are always acting within the confines of their own satisfied housing needs. Bildeston Parish Council and KBB appears to be no great exception to this. These two organisations have very badly let down the same local residents that they claim to represent. In their continued attempt to thwart the overwhelming need for any private and social housing, at any cost, they removed any opportunity for a collegiate, bespoke, beneficial, attractive and locally useful scheme, which we were very willing to provide. We were told 1000 times "no". And they continue to maintain this unhelpful position.

I would urge them to reconsider their view and use what little time there is to possibly open dialogue with the new developer. Having read their objections, I would note that the current objections to the scheme in question are the exact same ones they were invited to collaborate on but refused to do so.

We gave these two organisations every single possible opportunity to engage on the very points that have now been objected to. But for their sheer bloody-mindedness, this could (and should) have been avoided.

This is a catastrophic dereliction of their duty and symptomatic of their own wastefulness of the ample opportunities that we gave them, at our own considerable expense, and our continued willingness to engage, which was rejected over and over again. If an open-minded attitude had been present at the outset, every single one of the objections could (and would) have been avoided.

I would also urge the voters (and readers of this newspaper) to remember this utterly abject failure of their locally elected representatives next time the ballot box is opened for their consideration.

Many thanks, Tom Ryder-Smith (once formerly of this Parish).

Response from Bildeston Parish Council to Letter from Tom Ryder-Smith

Bugle readers over the last few years may recall the planning history of the site which is the subject of Mr Ryder-Smith's letter.

An outline planning application for housing development was submitted in late 2014 and refused by Babergh District Council in May 2015. A major reason for refusal was that there was no evidence of proven local need to justify development in the countryside outside the village boundary.

Later in 2015, an essentially unchanged application was submitted and permission was granted despite there being no material change in circumstances since the refusal. There was no consideration of any other suitable sites and the order in which they should be developed to meet evolving local need. The permission also set a dangerous precedent for other areas of countryside adjoining the village.

With support from the community, the parish council mounted a legal challenge. Finally, in 2017, Babergh District Council admitted that its decision to approve the planning permission was unsound and asked the High Court to formally quash the permission. It is therefore an agreed position and matter of legal fact that the planning approval in 2015 was defective.

Unless the application was withdrawn, Babergh District Council was required to consider the application again in a proper manner. At this time, the calculated housing land supply for the district had fallen to less than 5 years. This allowed Babergh to disregard certain of its policies and resulted in outline permission again being granted.

At this time, the parish council again considered a legal challenge but decided against it. This was partly because the legal grounds were considered much weaker, and partly because future development around the village would in future be controlled by a new Local Plan, not existing policies.

The parish council communicated this decision to Babergh District Council and to Mr Ryder-Smith, via his legal representatives.

In our communication, we stated:

"We would therefore prefer to engage constructively with the applicant, any prospective developer, the Planning Authority and others to ensure that the eventual development is acceptable and sustainable.

In particular, we wish to ensure that:

- 1. The current proposed density is not increased.*
- 2. The size, type and tenure of properties best meet local needs.*
- 3. A high standard of architectural design is achieved, which harmonises with the existing village.*
- 4. A direct, paved footpath link is created between the development and the village centre which can be used in all weathers, day or night."*

No response was received and the parish council has had no knowledge of whether the site remained in the original ownership or not.

The parish council's comments to Babergh on the latest plans for the site reflect our continued concern about these key issues and also representation from Suffolk County Council about drainage of the site, which may increase the risk of flooding in the wider village.

While the protracted planning process is no doubt frustrating for Mr Ryder-Smith, the errors and consequent delays are not of the parish council's making. And once permission was finally issued in 2017, the parish council would have much preferred to have ongoing communication as plans for the site developed. Indeed, the offer remains open and we hope will be taken up, even at this stage, if only to help minimise disruption and disturbance once building eventually starts.

Bildeston Parish Council

July 2021

Fully Insured

SKYWARD

WINDOW CLEANING SERVICE

**Window Frames + Sills + Front & Back Doors
cleaned every time as standard.**

Locally based 7 Brooksfield, Bildeston IP7 7EH
Pure Water High Reach Pole System (no ladders)

So no more broken tiles in accessible
windows over conservatories, Dorma's skylights etc.
now easily reach and cleaned from the ground.

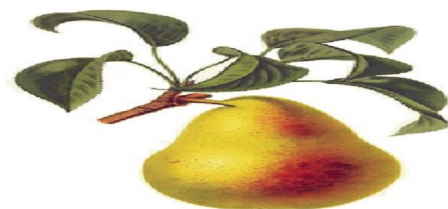
**We also clean with
Evolution 2 Pressure Washing System
Patios, Driveways, Decking etc.**



For a free no obligation quote
call Richard on

01449 258976 or 07771 565508

BILDESTON PRODUCE SHOW 2021



Saturday 28th August 2021

at

ST MARY MAGDALENE CHURCH

2:30 – 5pm

Entrance 50p

**Tea tent available for
refreshments.**

Tombola

Prize giving at 4pm.

*Discover
something
unique...*



Breakfasts, Lunches & Cream Teas



Large Selection of Gifts & Cards



Beautiful Flowers & Plants



Falconry Displays & Experiences



Vintage Collectables and Furniture



Art & Craft Gallery



Quilting & Felting



Speciality Cake Shop



**BRIDGE
FARM
BARNs**

Telephone:
01449 740456

Monks Eleigh, Nr Lavenham, Suffolk IP7 7AY
www.bridgefarmbarns.co.uk

DISCOVER SOMETHING UNIQUE

Unique gifts • Unusual Cards • Women's clothing • Lifestyle & home • Toys
Morning coffee • Breakfast • Lunches • Afternoon Teas • Sunday Roast



Celebrating 30 years of serving our lovely customers!

Monks Eleigh, Suffolk IP7 7AY Open Tuesday to Sunday
Tel: 01449 740456 • www.bridgefarmbarns.co.uk

Recipe of the Month

BBQ Skewers

with thanks to Alison

Ingredients

serves 8

SAUCE INGREDIENTS

- ¼ cup BBQ sauce
- 1 ½ tbsp ketchup
- 1 tbsp soy sauce
- 1 tsp rice wine vinegar
- ½ tsp chilli powder

SKEWER INGREDIENTS

- 4 Sausages quartered
- 3 cups pineapple chunks in 1 inch pieces
- 1 red bell pepper cut into 1 inch pieces
- 1 green bell pepper cut into 1 inch pieces
- Small red onion cut into 1 inch pieces



Method

1. In a medium bowl whisk to combine all the sauce ingredients
2. Build the skewers by alternating the sausage, pineapple, peppers and onion.
3. Brush all over with the sauce and place on a preheated grill
4. Flip the skewers every couple of minutes and baste with the remaining sauce until they are charred. This will take 6-8 minutes
5. Suggested Serving with New potatoes and a mixed salad

BASE GARAGE LTD

MONDAY – FRIDAY 7.30 – 6.00

SATURDAY 8.00 – 12.00

- TYRES
- EXHAUSTS
- PUNCTURES
- BATTERIES
- WHEELBALANCING
- AIR CONDITIONING
- LATEST DIAGNOSTIC EQUIPMENT
- WELDING TO MOT STANDARD
- SERVICING & ALL REPAIRS TO ALL MAKES OF CARS
& LIGHT VANS FLEET DRIVERS WELCOME
- MOT CLASS 4, 5 & 7
- COURTESY CAR AVAILABLE
- COLLECTION & DELIVERY SERVICE 5 MILES RADIUS
OF GREAT BRICETT
- WINTER CHECKS
- HOLIDAY CHECKS



LOWER FARM ROAD, GT BRICETT, IPSWICH IP7 7DR

01473 658987 / 01473 657704

DON'T GO HUNGRY

Are you self-isolating or in quarantine?

Has work dried up or you have very little money?

In these difficult times **nobody** should go hungry.

If you and your family are struggling to put food
on the table, we can help.

Bildeston Food Bank is a discreet service for
Bildeston residents.

Call us on **0333 335 5254** (local call charges)
or email **bildestoncsg@gmail.com**
in strictest confidence

If you can help support Bildeston Food Bank,
we would love to hear from you too.

We need tinned and dried food and toiletries.

Donation drop-points:

9-11 Duke Street

2 Brookfield

150 High Street

3 Manor Road

Bildeston Village Stores



Bildeston

CORONAVIRUS
SUPPORT GROUP

PLEASE
TURN OVER

Does anyone have spare carrier bags please. We are running low
at the Bildeston Food Bank. If you do, please leave them in the
collection bin outside 9-11 Duke Street. Thank you

**Now Frying At Market Square
Bildeston**

Thursdays 4pm - 7.00pm

Fridays 11am - 1.30pm



**Local Mobile
Fish & Chip Shop**

**Functions Catered For
Shows • Parties
Weddings • etc.**

**Telephone
01473 830771**

BILDESTON ELECTRICAL

Rewires, Extensions, Board Changes or New Installations

Any Alterations to Existing Installations

(lights, sockets, etc.)

Contact Ian

01449 257135

Auctions

Clarke &
Simpson

*Always
open...*

Can't make it?
All auctions are available
for online bidding via
the-saleroom.com
or i-bidder.com



Valuation

Probate & other valuations
Call-in service 6 days a week

Special sales

Antiques & Fine Arts
Art Deco & Retro
Domestic & Rural Bygones
Agricultural Collective

General Monday sale

Bespoke sales
In 2020 our lots sold to 60 countries
and registered buyers from over 70
Acting as agents for household clearances



Clarke & Simpson Auction Centre, Campsea Ashe, Nr Wickham Market, Suffolk IP13 0PS T: 01728 746323
www.clarkeandsimpson.co.uk CandSAuctions @candsauctions

COLLINS & CURTIS MASONRY LTD

est. 1925

Memorial Stone Masons

*Dedicated craftsmen who
combine traditional with new techniques*

Bespoke memorials
Additional inscriptions
Restoration and cleaning
Home visits by appointment

01473 250932
www.collinsandcurtis.co.uk



N D ROSE

Int / Ext Decorating

- Decorating
- Wall / Floor Tiling
- Gutters Cleaned /
Repaired / Replaced
- General Building
Maintenance

**Local established tradesman 25
years experience**

**Free estimates good rates
References available**

Tel: 01787 211042

Mob: 07518 040465

3 Fen Street Boxford CO10 5HL

BILDESTON PARISH COUNCIL

Draft Minutes for virtual meeting held Monday 12th July 2021, 7.00pm, at the Pavilion, Sports Field, Consent Lane, Bildeston

Present: Cllr Andrew Guttridge, Cllr Peter Hutchings, Cllr Sarah Leigh-Hunt, Cllr Richard Lester, Cllr Ray McCann, Cllr Virginia Tuck, 4x members of the public, Clerk – Angela Chapman



C156/21/22 Chairman's Welcome & Apologies: Cllr Alex Banks, Cllr Ashley Hubbard, County Cllr/ District Cllr Robert Lindsay. Apologies accepted.

C157/21/22 Declaration of pecuniary and non-pecuniary interests: Cllr Richard Lester – Kings Pightle Nature Reserve, St Mary's PCC. Cllr Ray McCann declared an interest in planning application DC/21/03310.

C158/21/22 Requests for dispensations in respect of pecuniary interests - None.

C159/21/22 Minutes of the meeting held 14 June 2021, amended under C152/21/22 d) to Parish Council to fund the remaining £4,500 from available projects reserves, topped up from general reserve, then approved and signed as a true record. Minutes from Extraordinary meeting held 17 June 2021 approved and signed as a true record.

C160/21/22 Adjournments – meeting adjourned at 1909hrs
County & District Councillor Robert Lindsay: apologies sent, report sent and distributed.
Public Forum – Quiet Lanes scheme – Four residents gave their comments on the scheme;

One was against, mainly due to the cost, it was explained the maximum cost to the Parish Council would be £50;

The 3 remaining residents were all in favour, citing Consent Lane is heavily used by walkers and cyclist, including families with buggies, traffic needed calming, one resident reported walking the lane regularly and it was rare not to move over for traffic to pass. One resident was a Trustee on the Sports Field/ Pavilion committee and reported a toddler group was regularly using the pavilion with mothers/fathers and children walking to the site, the pavilion had recently gained an alcohol license and signs were encouraged by the licensing council. Another resident informed Consent Lane was seeing more delivery vans using it, also football traffic was increasing. The sports field was well used during lockdown by families walking to the green space and the Kings Pightle Nature Reserve, accessed through the sports field, both of which are amenities to the village.

Resident: informed he had made a bookcase for the Clock Tower to enable a book swap library. Parish Council approved with a review in 6 months. A piece will be put in the Bugle to inform residents.

Reconvene 19.33hrs.

DC/21/02405 - Land East Of Artiss Close And, Rotheram Road, Bildeston, Suffolk
Application for approval of reserved matters following outline application B/15/01433
Town and Country Planning Order 2015 - Appearance, Scale, Layout and (Discharge
of Condition 20 - Landscaping details) for the erection of 48No dwellings (including 17
affordable dwellings). Revised plans submitted 21/6/2021.

*Further Comments from Bildeston Parish Council following Revised Proposals and
Update from Applicants Agent*

*We note the variations in materials and roof profiles now being proposed. While this
relieves the uniformity in the previous proposals to an extent, the basic designs remain
variations on a single theme and bear no relation to the indicative proposals in the outline
application, where properties were more individual in character.*

Our concerns about external storage remain.

*We note that discussions are ongoing with Suffolk County Council (SCC) as lead local
flood authority. Given the concerns about the risk of surface water discharge from the
development causing flooding within the wider village, we would appreciate being kept
informed as to whether SCC is eventually satisfied that the surface water discharge from
the site can be fully controlled in all rainfall scenarios, removing the risk of overtopping of
the attenuation basin.*

*We are also pleased to note that the layout now shows the full extent of the footway to be
constructed alongside Ipswich Road and the confirmation that this will be 1.8 metres
wide. This is however no substitute for a direct pedestrian (and possibly cycle) link from
the development to the village centre. While we appreciate that outline permission was
granted without such a link, we are disappointed that our offer in 2017 to help facilitate
such a link was not taken up.*

DC/21/03310

Proposal: Application for Listed Building Consent. Removal of storage shed and
associated concrete hard standing. Creation of garden and erection of 6ft garden fence.
Location: The Old Post Office, 90 High Street, Bildeston, Suffolk IP7 7EA
No objection.

DC/21/03448

Proposal: Notification for works to trees in a Conservation Area - Reduction in height of
2no Sycamore trees by 25% and remove dead branches and trim
Location: 4 Squirrells Mill Road, Bildeston, Suffolk, IP7 7DY
No objection.

DC/21/03495

Proposal: Full Planning Application - Erection of single storey extension to reception office
facilities.
Location: Manor Wood, Ipswich Road, Bildeston, Suffolk IP7 7BH
No objection.

DC/21/03552

Householder Planning Application - Erection of a garden shed.
131 High Street Bildeston Suffolk IP7 7EL
No objection.

Planning Appendix B – Items determined by Babergh District Council

DC/21/02509

Proposal & Location of Development:

Householder Application - Erection of single storey rear extension and two storey side extension.

Stables Cottage, High Street, Bildeston, Suffolk IP7 7EY

Granted.

TOWN AND COUNTRY PLANNING ACT 1990

Proposal: Discharge of Conditions Application for DC/20/03176- Condition 4 (Illumination),

Condition 5 (Construction and Demolition Management), Condition 6 (Materials) and Condition 8 (Archaeological Works)

Location: Land To The Rear Of 52 High Street, Bildeston, Ipswich, Suffolk IP7 7EA
Approved.

DC/21/02631

Proposal & Location of Development:

Householder Planning Application - Erection of single storey front extension

3 Brookfield, Bildeston, Suffolk, IP7 7EH

Granted.

C162/21/22 Projects and Progress Reports

a) Joint Local Plan Examination representations – Cllr Andrew Guttridge reported the public examination had been delayed to September, suggested the PC employ Jane Hudson again. Council approved delegated authority for Cllrs Andrew Guttridge and Alex Banks to proceed.

b) Quiet Lanes – Cllr Virginia Tuck reported a decision was needed at the meeting as the deadline was the end of July. Already discussed in the Public Forum part of the meeting, Council discussed and approved the scheme, together with the £50 cost to the Parish Council.

c) 20 mph project/ design costs/ funding – CC Robert Lindsay passed details to Suffolk County Council, awaiting design/ layout.

d) Update on village amenities –

Sports Field B – grass cutting - Council agreed for the field to be cut once a week whilst the grass is growing so quickly. Clerk to advise operative.

e) Festival of Suffolk 2022 – this will celebrate the Queen's Platinum Jubilee 2nd to 5th June 2022, an extra Bank Holiday has been given to this by central Government. Clerk to contact each community group in the village and gauge interest. The PCs role will be to fund and support the celebration. Also put a piece in the Bugle.

C163/21/22 Administrative, Finance & Governance Reports

a) payment for approval – payment sheet distributed before meeting, Cllrs Andrew Guttridge and Richard Lester to authorise. It was agreed to fund the unexpected cost

of portable toilets for the B Natural music festival up to £300. Payments agreed and approved. Internal Audit report was distributed before meeting, Clerk to arrange meeting with Finance Working Group, and put on September agenda.

b) signing of mandate for Barclays account – access and management – not completed

c) consider role for CDW – community development worker deferred from June.

Resident who voluntarily updates the website gave report on work involved in the role.

Council agreed to place advert in the September Bugle for a Community Development Worker.

d) consider the best way to communicate with residents – media comms and visibility of the PC deferred from June. Discussed under c) above, would be part of the CDW role.

e) website content management – Clerk now posting Council documents on site, some community groups have been trained to do their own pages, would be included in the CDW role.

f) format of minutes – suggested to leave Councillors names out where possible and make the minutes as comprehensive as possible but succinct. Draft minutes to be distributed to Councillors before going to Bugle.

C164/21/22 Matters to be brought to the attention of the Council

Cllr Andrew Guttridge – had a report of a streetlight out on Wattisham Rd. Clerk to find the number of lamp-post and send to Cllr Guttridge.

Cllr Richard Lester – reported light out on the Clock Tower, Cllr Guttridge will check who is responsible for replacement – Parish Council or SCC.

Village sign green on the corner of the High Street and Ipswich Road, being used as a car park. Discussed, suggestion that when the new village sign is erected to maybe landscape the area.

Flagpole still to be erected on the Clock Tower.

C165/21/22 Items for agenda

20mph project

Community/ PC website role

Internal Audit report

Meeting closed 21.49hrs.

Next meeting: Monday 13 September 2021 – 7.00pm – Sports Field Pavilion

Box of Frogs PRESENT IN ASSOCIATION WITH
THE BILDESTON BUSKERS ^{THE} **KINGS HEAD**

OPEN MIC NIGHT

WEDNESDAYS
8.30 TILL 11.00

AT
CHAMBERLIN HALL

CHAMBERLIN CLOSE

**BILDESTON
SUFFOLK**



WITH

KEV & DAVE

☒ SORRY **NO AMPS**

☒ **PA**

☒ **KEYBOARD**

☒ **CAJON**

☒ **FINALE JAM!**

FULL BAR



BILDESTON PARISH COUNCIL VACANCY

The Parish Council is made up of nine elected or co-opted members who volunteer their time for the good of the community without receiving payment for their services. Their diverse backgrounds, skills and experience are a great asset to the parish.

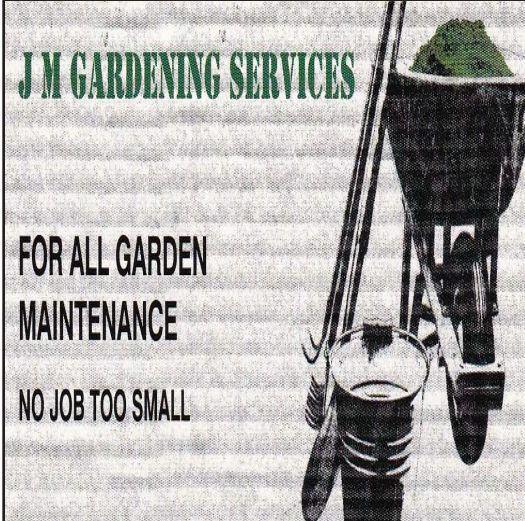
The role of the Parish Council is to represent the interests of the whole community, engaging with local residents, discovering the needs of different groups in the community, such as the young and elderly, and lobbying on behalf of Bildeston. The Parish Council is the tier of local government that is closest to local people. Babergh District Council and Suffolk County Council form the other two tiers of local government that cover Bildeston. Details of their respective roles and responsibilities can be found in the Council services section of the website www.bildeston.org.uk Parish Councillors are subject to re-election every four years unless there are the same number (or less) of Councillors to vacancies in which case those nominees will be co-opted on to the Council. All Members of the Parish Council are required to comply with a Code of Conduct in the performance of their duties. If you have any questions, or think you would like to join the Parish Council please contact the Clerk on clerk@bildeston.suffolk.org.uk or 07593 584209. Angela Chapman Clerk



FREE ESTIMATES FULLY INSURED

JL ROOFING
FLAT-ROOFING AND EDPM
RUBBER-ROOFING SPECIALISTS
WE COVER ALL OF MID SUFFOLK

JAMIE: 07547594699
AARRON: 07894627354
JLROOFINGSERVICES@YAHOO.COM



J M GARDENING SERVICES

**FOR ALL GARDEN
MAINTENANCE**
NO JOB TOO SMALL

JOHN MORGAN
TEL: 07855 855994
johnmorgan007@btinternet.com

COUSINS & SON BILDESTON LTD

available to carry out all your building requirements
from
Renovations / Alterations / Extensions
to
General Repairs

Please contact Paul for a free estimate

01473 658919 or 07876 244461

or email paul.cousins268@btinternet.com



- ★ Professional finish at reasonable rates
- ★ Clean and tidy lady decorator
- ★ Honest, reliable service

Tel: 07895 277357

Email: claire.marks@housetohomedecorating.co.uk

Web: www.housetohomedecorating.co.uk

Choose



Mobile Eco Refill Shop

**We are coming to Bildeston
on the second Thursday of
each month from
8.30-10.30am
so pop and see us in the
market square.**

Simply bring your empty bottles along and we can refill them or purchase prefilled reusable bottles ready for next time.

Try our zero and low waste refilling station for eco-friendly and vegan household cleaning and laundry liquids and hair and body products.

Buy what you need without unnecessary packaging.

For orders and more information visit :

www.chooserefills.co.uk

Free Delivery for orders over £10

Pet Service

At St. Mary Magdalene Church Bildeston
On Sunday 1st August, at 11am

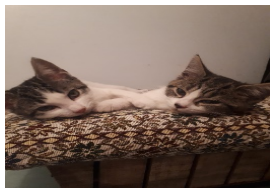
Please come and join us as we celebrate the animals that
are our friends and companions now
and in the past.

Bring your pet's along to an open-air service,
weather permitting!!
Or bring your pictures of those past.

Psalm 104:24

'O Lord, how manifold are your works!
In wisdom you have made them all.
The earth is full of your creatures.

For more info please contact Teresa on 01449 744120
Or email teresalester47@gmail.com



Cream Teas in the Garden

At Tankard House
Wattisham Road,
Bildeston

Tuesday 3rd August

2pm to 4pm

All funds in aid of
St. Mary Magdalene Church, Bildeston
All Welcome

More info please contact Teresa
on **01449 744120** or
teresalester47@gmail.com



Natalie Mottram
 Physiotherapist
 HPC & CSP Registered



- Muscle and joint problems
- Neurological conditions
- Stroke rehabilitation
- Fall prevention & balance rehabilitation
- Pre and post-surgery treatment

For more information
 and rates please contact:

T: 01787 248061

M: 07758255583

E: nataliejmottram@gmail.com



Physiotherapy Clinic: The Beauty Gallery,
 3 High Street, Lavenham, CO10 9PX

ANDYS LOGS

Well Seasoned Barn Stored Hardwood Logs

Loads Delivered or Pick Up

Wood cut to size for any Heater

Large bags of wood collection only

CALL ANDY 07881 684687

**Bags of wheat for Chicken feed also available collection only*

CHIMNEY SWEEP

ECO SWEEP CHIMNEY SERVICES

NEW POWER SWEEPING METHOD USED
 FOR A MORE THOROUGH CHIMNEY CLEAN
 THAN BRUSHES.

INDUSTRIAL HEPA FILTERED VACUUM.

FULLY INSURED.

INSURANCE RECOGNIZED CERTIFICATES ISSUED.

SPOTLESS, RELIABLE AND FRIENDLY SERVICE.

ALL CHIMNEYS, WOOD BURNERS, AGA, BOILER

FLUES SWEEP.

GUILD OF MASTER SWEEPS CERTIFICATED MEMBER.



TEL. 01359 232335

SESAW NEWS

After another July downpour some of our bedraggled ladies could be heard laughing and chatting as they exercised the rescued dogs in the garden. Bev has been helping at SESA W for three years in between caring for her own horses. She thinks people don't realise that cleaning kennels is mucky, hard work particularly in the winter, "the TV programmes make it look so glamorous". Seven years ago, Debbie chose to work four full days a week leaving a day for volunteering. She says it is rewarding to spend time with the dogs, building their trust through kindness. "Everyone is so friendly and it is wonderful to see the dogs go to new, loving homes." Enthusiastic helpers, Judy and Ivy agree, they both help with animal care, sorting donated goods and fundraising. Despite the tough times, no matter what they've been through, our volunteers keep coming for love of the animals. After suffering an arm injury in the Spring, Debbie recruited her husband as chauffeur cum dog walker for a few weeks! We are lucky to have equally dedicated volunteers each day but the numbers are dwindling due to various life changes. If you have what it takes to care for the animals, help with general maintenance or assist with fundraising, please contact us and don't forget to leave your phone number. Despite yet another shower, the tired friends still look happy as they head for home and the resident dogs head for the kitchen, including me, Kenny (the Boss) Chihuahua. Suffolk & Essex Small Animal Welfare, Registered Charity No.1124029, Stoke Road, Leavenheath, CO6 4PP. Tel: 01787 210888 www.sesaw.co.uk

SESAW STALL at the Community Market, Old School, Long Melford, CO10 9DX on Thursday 26th August, 10am – 1pm. Cakes, cards, art, crafts, plants, jewellery, handmade cushions, baby clothes, refreshments and much more being offered by local groups including SESA W. More information on 07711 242481 or 01787 319120



THE FLOWER SHOP

Your local independent florist

Creating beautiful
arrangements for
all occasions using
only the freshest,
seasonal flowers

Visit us in store
to view our flowers,
plants and
homeware items,
or order by phone
or online

Local and nationwide
deliveries

• ESTABLISHED 2013 •

www.theflowershopkm.com THE FLOWER SHOP AT KERSEY MILL Near Hadleigh IP7 6DP 01473 805156

Eco SYSTEMS

Tree and Grounds Care

**Tree Surgery, Felling, Dismantling,
Hedge Maintenance, Stump Grinding,
Woodland Creation,
Commercial Grass Cutting**

Fully Insured

**NPTC qualified Council approved contractor
FREE no obligation quotations and advice**

DAN STANMORE

**Bildeston 01449 741255 • Mobile 07980 290781
Woolcombers, Duke Street, Bildeston IP7 7EW**



BILDESTON BAPTIST CHURCH

Duke Street, Bildeston

Email: bildestonbc@gmail.com

Service every Sunday morning at 10:45

We are following government guidelines during covid-19, therefore we regret to say that we are unable to hold the Community Coffee Centre at the present time. Lunch Club will recommence in June and we continue to have to restrict it to those who have previously attended and by invitation only.



LOCAL DOG WALKER

**Dog walking service
and small animal care**

Call today for a free quote

Hi, I'm Janet. I've been been a dog and small animal owner for over 40 years and love all of our furry friends. I'd be delighted to put my knowledge and experience to good use while you are at work, on holiday or simply out for the day.



CK9 dog walker

07881 754483

CK9walkies@gmail.com

- DBS checked

- Fully insured

Based in Chelsworth



Brett Valley Benefice

(Bildeston w Wattisham, Lindsey, Whatfield and Semer,



Nedging and Naughton).

Pastoral Letter – August 2021 from Revd Elke Cattermole

"Casting all your anxieties on him, because he cares for you." 1 Peter 5: 7.

We are now into our holiday season, with children on their school break, families hoping to get away, for some though it may be more complicated.

The pandemic changed our plans for last year and many events were taken forward to this year, although some occasions are not happening until next year.

Sporting events have started Euro 2020, Wimbledon in June/July and even now the Olympic Games that should have taken place last year are happening now in Tokyo, Japan. The motto coined by Pierre de Coubertin upon the creation of the International Olympic Committee in 1864, "**Faster, Higher, Stronger**", was there to energise the Olympic movement. This international event is where nations compete and work together.

Whatever we may think of sports whether we are interested enough to watch it or not. A diverse number of sports are starting up again to give enjoyment to many people. However this year the '*hurdles*' have been even more difficult to jump over.

The international restrictions caused by the pandemic, endless testing for the participants and spectators at the events when allowed, has caused much anxiety and even heartache, among many.

As a person who never excelled in sports but one of thousands who had a 'go' when at school and as an adult playing with my children and grandchildren. I am fully aware how those sport women and men have had to work hard to become, "**Faster, Higher, Stronger**", in their chosen sports and events. They train for years but then it appears in a matter of seconds it is finished, and everyone must learn to move on. Opportunities for the future become a reality for everyone who are participants or spectators.

The Christian faith is like that of anyone who has had to persevere in their years of faith and belief, with setbacks, and heartaches. But in God we receive a spiritual power to get us through and give us a more hopeful future, in his strength and not just our own.

*"Paul the Apostle writes in the letter of Timothy **I have fought the good fight, I have finished the race, I have kept the faith.** 2 Timothy 4:7."*

Hope you all manage to have a summer break and look forward to meeting some of you soon.

God Bless you all.

Revd Elke

Services in the Brett Valley Benefice

August 2021

Date 2021	Time	Service	Church
Sunday 1 st August	11.00 am	Holy Communion	Semer
	11.00 am	Pet Service	Bildeston
Sunday 8 th August	9.30 am	Holy Communion	Naughton
	11.00 am	Baptism Service	Whatfield
Sunday 15 th August	11.00 am	Holy Communion	Nedging
	11.00 am	Morning Prayer	Semer
Sunday 22 nd August	11.00 am	Holy Communion	Bildeston
	11.00 am	Morning Prayer	Whatfield
Sunday 29 th August Benefice Service St Mary Patronal Festival	11.00 am	Holy Communion	Naughton

BILDESTON BELL RINGING

HOORAY! Bell ringing has again resumed at St. Mary Magdalene! How about joining our small group of bell-ringers? We meet every Tuesday evening at 8.00pm, and everyone (from complete beginners to more expert ringers) is very welcome. Spend an enjoyable hour meeting friends, getting a moderate exercise workout and mentally stretching your mind with some mathematical combinations? Campanology rules OK?



For more details contact:
Neil Ashwell 01449 741370 or



Lunch club (By invitation only for previous attendees)

Baptist Church 12.15 for 12.30pm start.....1st Wed every month

Craft it Together

01449 740716/741606 for details.....Not yet restarted

Strollers & Striders

Baptist Church Car Park 10.00.....Not yet restarted

Baby and Toddler Group

Baptist Church 9.15 to 11.30am.....Not yet restarted

Mens Breakfast

Baptist Church 8.00am.....Not yet restarted

Church Bell Ringing Practice

St. Mary Magdalene church bell tower 8.00 to 9.15pm.....Every Tuesday

Bildeston Community Cycling

Market Square 6.45pm.....Every Tuesday

Cream Teas in the Garden

Tankard House 2.00 to 4.00pm.....Tues 3rd

Kings Pightle Working Party

Kings Pightle 10.00am.....Sat 7th

Bildeston Flea Market

Sports Field 10.00am to 3.00pm.....Sun 22nd

Produce Show

St Mary Church 2.30 to 5.00pm.....Sat 28th

**The Bugle advises checking with organisers
to make sure events in which you are interested
are still on and what Covid-19 actions you might have to take.**

Please tell us about your forthcoming events in **September**

email: editor@bildestonbugle.co.uk



When you're finished with this Bugle please pass it on or recycle it.