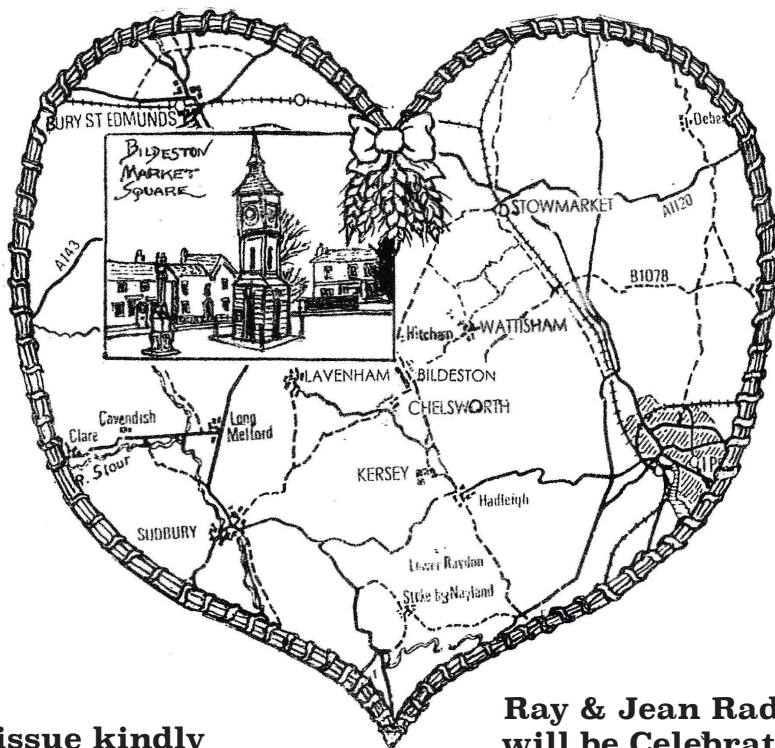


Issue number 358

August 2020

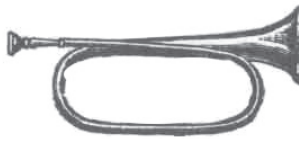


**This issue kindly
sponsored by -**

**Ray & Jean Radley
will be Celebrating
an enjoyable 20 years
living in Bildeston**

**The village magazine produced for the people of Bildeston
www.bildeston.org**

Bildeston Noticeboard public group | Facebook



BILDESTON BUGLE ADVERTISING AND FREE CONTRIBUTION INFORMATION

Our aim is to provide every resident and organisation in Bildeston with a magazine which provides information of local interest FREE OF CHARGE. To that end we are required to be efficient in the space we use to print free notices. We endeavour to include interesting items, announcements for events open to the general public for free and items of a charitable nature free of charge. Ongoing free announcements need to be reduced to minimum size or make a contribution towards printing costs. Please check with us before submitting your advert and ALWAYS provide us with all of your contact details in order for us to send an invoice and receipt.

email: editor@bildestonbugle.co.uk

Sponsor a 'Bugle' - £15 per issue

and have a brief message of your choice printed on the front of the Bugle

Advertising Rates

	1 issue	12 issues	
1/4 page	£5.00	£35.00	65mm W x 92mm H
1/2 page	£10.00	£60.00	134mm W x 92mm H
Full page	£15.00	£110.00	134mm W x 190mm H

THE SMALL PRINT

All adverts, payments and items are required before the 17th of every month for inclusion in the following month's issue (except December before the 15th).

The earlier free contributions are received the greater the chance of inclusion.

The Editorial Team are not responsible for the accuracy of articles or adverts and reserve the right to alter, shorten or refuse any item submitted for publication.

Ask for BACS details or make cheques payable to Bildeston Bugle and send to:

The Editor, Bildeston Bugle, 14 Squirrells Mill Rd, Bildeston IP7 7DY

If we do not receive payment by the 17th of the month your advertisement may NOT be included

The Bildeston Bugle Management Team is:

Alan Jacobs (Editor) 01449 741645

Tricia Baldwin (Marketing & Advertising Revenue)

Christine Hubbard (Treasurer) 01449 740633

Stuart Law and Alison Sims (Assistant Editors)

Pam Weaver (Distribution)

Lisa Chinery (Printing Assistant)

ED'S COMMENT

At the end of July, Government help, including food parcels and medication deliveries, will be stopped to those who are shielding. Many of those affected might have already received a letter from Government explaining the changes. Much more publicly were the announcements about the re-opening of pubs, hairdressers and barbers, museums, galleries and a wider range of sports. At the same time details were given about which foreign countries can be visited with the government using a traffic light system to describe places of high, medium and low risk.

This is the easing of 'lockdown' we have waited for. The easing of restrictions on going out, meeting up with loved ones and friends in social settings and returning to our places of work and leisure. But easing lockdown is not without risk.

It is the concept of 'risk' that we have to get our heads round from this point on. Life is full of risk, the world is full of risk. All different kinds of risk. Without wishing to sound negative or a doom monger, the moment we step out of our homes, we are open to risks. Actually, we don't have to step out of our homes, according to ROSPA in the UK every year, almost 6,000 people die in home accidents and 2.7million visit their local accident and emergency departments after accidents at home. People who spend more of their time at home suffer proportionally more accidental injuries, You can't win, can you? Stay at home and suffer a terrible accident, or go outside and catch Covid!!

Since birth we have coped with risk, sometimes consciously and sometimes not. The difference is knowledge, understanding and preparation. When you know what the risks are, you can behave accordingly. Going out in the winter cold, we wrap up warm. Sunbathing in a very hot climate, we apply sun cream with a high UV factor. In the car we put on our seatbelt. On a motorbike we wear leathers and a crash helmet. Simple examples, but they make the link between understanding what the risks might be and what we can do to help minimise them. They are good examples because we might still fall off our bike, or have a crash in the car, but the chances of surviving are greatly increased due to us taking the right safety precautions.

So it is with Coronavirus. The fact is the virus will stay here along with the other viruses in the corona 'family', like the common cold and types of flu. We just have to understand, and put in place, what the best precautions will be to help us manage the risk and carry on with our lives. Certainly the regular thorough washing of hands has to continue and now the wearing of face masks in certain situations. Face masks may well become as normal in the UK as they are across the far East. Mark Murphy held an interesting interview on BBC Suffolk recently with someone comparing people's behaviour in Leicester and Suffolk. In Leicester there seemed to have been much less social distancing whereas here people seemed to take it far more seriously. It's our behaviour that will determine to what extent the virus will impact, so making some basic changes to the way we behave will help keep us safe. Talking of Mark Murphy (BBC Suffolk presenter) use his anti-litter poster on page 24 and look out for him judging the village scarecrow competition.

KH

Kevin Hollings KITCHEN STUDIO



Unit 14 Lodge Works, Stowmarket Road,
Old Newton, IP14 4EE
01449 257160 www.kevinhollings.com
info@kevinhollingskitchens.co.uk

Bildeston Primary School

The last few months have been a very unusual time, and many of us have had to adapt and learn new skills, from zooming at school to teaching at home. I would like to thank our dedicated staff at school for maintaining in-school provision as well as guiding the learning of pupils. Many of our parents have been teaching at home guided by work set by teachers and this has been greatly appreciated. As a community we have pulled together and provided as best we can for our exceptional children.



The difficulties we have faced have not deterred us from keeping active! We have continued to take part in PE activities arranged through one of our sports providers, including the Sports Week Challenge where children completed activities like Speed Bounce, Keepy Uppys, Target Throws, Step Up and Upside Down Challenges!! We also joined in with the Sports Week Step Challenge where we managed a grand total of 5732 steps, that's nearly to the top of Scafell Pike!! Children at home also joined in!



We have had Maths Quizzes by zoom as well as a parent question and answer session with teachers to help parents with their children's home learning.

Transition

I am sure you will all join me in wishing our current Year 6 every

success in their High School education. It was lovely to see them last Friday as they enjoyed time with staff and each other, and I know they will represent us well as they move on to High School.

We have made lots of zoom calls to our new parents and pupils as they embark on their education with us from September. We were sad not to have given our new pupils the usual Bildeston welcome to our school, but rest assured plans are in place to make sure that they all settle well into their new environment in September.



On behalf of the staff, governors and myself, I wish you all an enjoyable and, hopefully, sunny summer holiday.

Learning and Growing Together

If you are considering Bildeston Primary as a school for your child, we would welcome a visit. Please phone the office on the number below or email us. We would love to meet you.

Bildeston Primary School, Newberry Road, Bildeston, Ipswich, Suffolk, IP7 7ES

Telephone: 01449 740269 Website: www.bildeston.suffolk.sch.uk



PHYSIOTHERAPY AND PILATES



Claire is an experienced
Physiotherapist and certified
Pilates Instructor.

Services offered:

- . Physiotherapy
- . Womens Health Physiotherapy inc
- . MummyMOT
- . Running Analysis
- . Sports Massage
- . Pilates 1:1
- . Pilates classes (**BILDESTON & Hadleigh**)
- . Home visits

PHYSIOTHERAPY CAN HELP:

- . Muscular aches and pains
- . Low back pain
- . Hip and pelvic pain
- . Neck pain
- . Joint pain or sprains
- . Repetitive strain injuries
- . Nerve pain
- . Ante and post natal pain
- . Pre- surgery



Clinic Address:
Kersey Mill
Kersey
IP7 6DP

www.fitframephysio.com

Tel: 07900440141

E: Claire@fitframephysio.com

Bildeston Sports Field Pavilion



Hall, kitchen & field for children's & adult parties,
meetings, clubs & rehearsals.

For details and hire rates contact 07711 904515 or 07766 527433

Chamberlin Hall

BILDESTON'S COMMUNITY VILLAGE HALL



To find out more call our bookings

What's on in August

For bookings contact: 07716 921514 or chamberlin.bookings@gmail.com

Currently the hall remains closed due to the Coronavirus.

Monday/Tuesday	from 3.45	MLSPA Performing Arts (07957 351941)
Every Tuesday	7.00pm	Snooker Club
Every Tuesday	7.00pm	Adult-dance-keep fit! (part of MLSPA)
Tuesday	7.15pm	Carpet Bowls (practice night & home games)
Wednesday	6.30pm	Drama Group (call Debbie: 01449 740375)
Every Thursday	10.30am-11.30	Zumba Gold with Sarah
Every Thursday	6 - 7.15pm	Yoga contact: catherinerolfeyoga@gmail.com
Every Friday	11am	Pilates for Improvers (call Claire: 07900 440141)
Every Friday	from 12.00	Pilates for Beginners (call Claire: 07900 440141)
Tuesday 25th	7.30pm	Annual General Meeting

Chamberlin Hall Management Committee invite you to attend the

CHAMBERLIN HALL AGM

Which will be held outdoors in order to comply with social distancing guidance.

TUESDAY 25TH AUGUST at 7:30 p.m.

All welcome

Please join us to hear about the past year and plans for the future.



S J WILDING GARDEN SERVICES

**Garden Maintenance
General garden tidy up
Landscaping
Hedge cutting
Hedge reduction
Fencing
Turving
Lawn care**

For all your gardening needs contact Steve:

01787 583828/07885728973

steve.wilding283@googlemail.com

xSalt *IT Services*

**New PCs & Setup
Tuition / Remote support
Repairs & Upgrades
Wi-Fi & Networks**

"Due to COVID I am focusing more on remote support, please do contact me with any enquiries." - Olly

Website: xsalt.co.uk

Tel: 07443439508

Email: info@xsalt.co.uk



- ★ Professional finish at reasonable rates
- ★ Clean and tidy lady decorator
- ★ Honest, reliable service

Tel: 07895 277357

Email: claire.marks@housetohomedecorating.co.uk

Web: www.housetohomedecorating.co.uk

NJC

Clearance and Collections

Single item all the way upto full house and garden clearance, anything you need moved or removed.

Luton van with tail lift and tipper available.

Fully insured and licenced.

07999125413

njc.candc@gmail.com

COVID - 19 SUFFOLK INFORMATION

The Government announced measures to ease lockdown restrictions.

One of these applies to people who are shielding. On the NHS website is clear information concerning who is in the shielding group, divided into two categories; Vulnerable and Extremely Vulnerable.

Those who are shielding and live alone will be able to create support bubbles with one household of any size. They will also be able to meet in groups of up to six outdoors while maintaining social distancing rules. From August 1, extremely vulnerable people who are at most risk from becoming ill from coronavirus will no longer need to shield. However, they should still follow social distancing guidelines when outside their homes and wash their hands regularly to reduce the risk of being infected and wear a face mask in shops.

There has been a lot in the news about plans for local lockdowns, especially with the situation in Leicester, and some untruths about a 'spike' in Suffolk's numbers. Firstly, there has been no spike in Suffolk. The list published in a national newspaper which listed 36 places where local lockdowns might be necessary, was based on a comparison of the number of cases in June compared to the number a week before. In Suffolk, there was an increase of 1 case in this period, from 2 cases to 3 cases, equivalent to an increase of 50%. The Government now publishes COVID-19 pillar 2 testing data. Up until this point the data that has been published at a local level has been pillar 1 data which is based on the amount of people who have been tested via NHS and Public Health England laboratories. Pillar 2 tests are tests which have been processed in commercial laboratories, and this data will include tests conducted in wider community settings, such as the Copdock site in Ipswich. Not all cases identified will be new, there will be cases that have been identified since pillar 2 testing has been up and running. Suffolk remains an area with low cumulative case rates and unlike areas such as Leicester, there is no current evidence to suggest weekly cases are increasing, and cumulative population case rates remain statistically significantly lower than England.

Suffolk published its Local Outbreak Control Plan to be triggered where there are suspected or confirmed COVID-19 outbreaks in any setting or community within the county. It outlines how complex cases will be managed in more than 30 high-risk places, locations and communities, in particular care homes and schools. It also outlines local testing capacity, use of data to identify and proactively manage outbreaks, and contact tracing in complex settings.

BASE GARAGE LTD

MONDAY – FRIDAY 7.30 – 6.00

SATURDAY 8.00 – 12.00

- TYRES
- EXHAUSTS
- PUNCTURES
- BATTERIES
- WHEELBALANCING
- AIR CONDITIONING
- LATEST DIAGNOSTIC EQUIPMENT
- WELDING TO MOT STANDARD
- SERVICING & ALL REPAIRS TO ALL MAKES OF CARS
& LIGHT VANS FLEET DRIVERS WELCOME
- MOT CLASS 4, 5 & 7
- COURTESY CAR AVAILABLE
- COLLECTION & DELIVERY SERVICE 5 MILES RADIUS
OF GREAT BRICETT
- WINTER CHECKS
- HOLIDAY CHECKS

£10 OFF!

***YOUR MOT WITH THIS
ADVERT***

LOWER FARM ROAD, GT BRICETT, IPSWICH IP7 7DR

01473 658987 / 01473 657704



BNatural

NEWS FROM THE BNATURAL COMMITTEE

**Sadly there will be no festival this year - but see you
all for our 10th Festival in September 2021**

**Like many other village events we have been
unable to hold any fundraising events and so plan to
host a socially distanced fundraising picnic on
September the 6th - details will follow!**

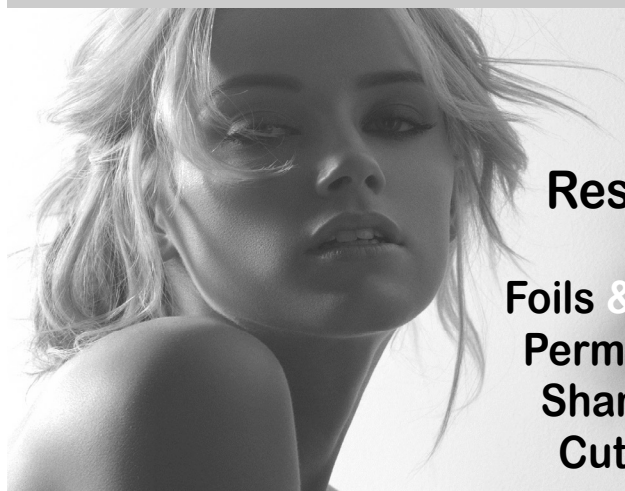
**Lastly, we still need to hold and AGM and publish our
accounts all of which will take place in the next 4 weeks.**

**Keep well, keep safe and many thanks for your
continued support**

www.bnatural.bildeston.org

Studio 66

Ladies and Gents Hairdressers



Restyling

**Foils & Highlights
Perms & Colours
Shampoo & Sets
Cut & Blow Dries**

Friendly Service from our Professional Team

Tue & Wed Senior Citizens

*****special rates*****

Opening Times Tues - Friday 9 - 5 pm Sat - 8 - 1pm



Tel 01449 740644

52A High St Bildeston IP7 7EA

Bildeston Ladies Club



They do say that "no news is good news" and I am sad to say that at this time of writing I still have no news for you as to when we might be able to

gather again at our monthly meetings. The management committee of Chamberlin Hall has been meeting regularly to discuss the measures they have to put in place before the hall can be safely back in full swing and at the moment the hall remains closed to indoor use.

I am hopeful that re-opening might occur at the end of summer and with this possibility in mind I will be contacting all of you individually to see how you feel about a possible return under slightly different arrangements. Until then we will just have to be patient.

No news for myself has also meant that we are continuing with our quieter way of life and keeping very healthy - this is the sort of news that I would like to hear about all of you too and sincerely hope that you are well.

I had no news about the mystery members of our fabulous ladies football team as shown in the last Bugle, or any information about the men's team, but perhaps they were reluctant to admit that the girls had given them a thrashing !!

Take care, stay safe

Chairlady - Jo Silburn - 01449 257045

Save the date!

and get planting, crafting,
baking and ph

**Sadly, the 2020 produce show is
cancelled due to
Covid-19 restrictions**

22nd August 2020

St Mary Magdalene Church

HONEY BEE'S NURSERY



Hitcham Village Hall, Hitcham, IP7 7NE

FOR CHILDREN AGED 2 – 5 YEARS

Open Mon, Wed, Fri 9.15a.m. – 12.15p.m. or 3.15p.m.

Tues, Thurs 9.15a.m. – 12.15p.m.

Early Drop Off – 8.00a.m. Lunch Club Daily until 1.15p.m.

2 Indoor Rooms and Outdoor Areas

Ofsted Registered

**Early Years Funding for all 3/4 year olds and eligible
2 year olds.**

30 hrs funding also available.

Contact: Sharon Scarfe 07947621122 (mobile) 01449 740764 (hall)

Or visit **honeybeesnursery.co.uk**

**WANT TO LEARN TO PLAY
GUITAR, BASS, DRUMS?**

***MANY CONTEMPORARY STYLES COVERED, INCLUDING
ROCK, METAL, POP, INDIE, BLUES, FUNK AND MORE.***

KEYBOARDS, VOCALS, SONG AND LYRIC COMPOSITION

MOBILE DIGITAL RECORDING SERVICE AVAILABLE



ADAM KEETON

GOOD COMPETITIVE RATES

01449 744530 OR 07914 798374

FULL DBS + LOCAL YOUTH GROUP LEADER





KINGS HEAD & Brewery

Nigel, Susie, Ryan, Freya and the Kings Head team send their very best wishes and **hope everyone is keeping safe and well...**

www.bildestonkingshead.co.uk

- We again want to **thank all the amazing people** working to support and look after us from the **dustbin men, shop workers and teachers** to the **emergency services, care workers** and of course our incredible **NHS**.
- We have taken a **cautious interpretation of the government guidelines**. So, to ensure everyone stays safe and to stop the spread of the virus, whilst still providing a relaxing and enjoyable pub experience, we have initially **opened just the beer garden from 12 lunchtime at weekends**. Please come round to the back of the pub, use the hand sanitiser provided and find a table in the garden from which you will be served...
- On **Sundays at 3pm** there's a carefully organised **Open Mic** with socially distanced solo acoustic performances.
- The **Kings Head kitchen has also opened** with a reduced menu, **our hours will be Saturday 12 - 2pm & 6 - 9pm and Sunday 12 - 4pm**. To ensure everyone's safety and help stop the spread of the virus, meals will be served as 'a takeaway' either wrapped in paper to take home or in a disposable lidded carton with wooden cutlery to eat in the beer garden.
- Baby steps, but by **maintaining social distancing, with extra cleanliness and by staying alert we will protect the NHS and save lives**. Additionally, **if you are feeling unwell, please stay at home and seek NHS advice**.
- A **detailed risk assessment** has been published on our website and will be reviewed regularly.



Beauty by Megan

Megan is a beauty therapist with over 14 years experience.
I work from my log cabin in Hitcham, it is situated in a peaceful, rural
location and benefits from off-road parking.
Treatments are by appointment only. Therefore you are guaranteed
complete privacy and your treatment time is exclusively for you!

A variety of treatments include:

Dermalogica Facials/Reflexology/Spray Tanning
Jessica Manicure and Pedicure
Foot Health Maintenance (nail trimming/hard skin removal)
Eye Treatments/Waxing

Please phone for enquiries and price list.

Megan Pryke
VTCT, BABTAC
07876 717 008

DON'T GO HUNGRY

Are you self-isolating or in quarantine?

Has work dried up or you have very little money?

In these difficult times **nobody** should go hungry.

If you and your family are struggling to put food on the table, we can help.

Bildeston Food Bank is a discreet service for Bildeston residents.

Call us on **0333 335 5254** (local call charges)
or email **bildestoncsg@gmail.com**
in strictest confidence

If you can help support Bildeston Food Bank,
we would love to hear from you too.

We need tinned and dried food and toiletries.

Donation drop-points:

9-11 Duke Street
150 High Street

2 Brookfield
3 Manor Road

Bildeston Village Stores



Bildeston
CORONAVIRUS
SUPPORT GROUP

PLEASE
TURN OVER

Does anyone have spare carrier bags please. We are running low at the Bildeston Food Bank. If you do, please leave them in the collection bin outside 9-11 Duke Street. Thank you

PAINTING SERVICES

Rob Harrison

Painting & Property Maintenance

Tel: 01449 741041

Mob: 07852 795469



Green Farm

Vintage China Hire



A large selection of Vintage china, glass and other items to hire for vintage tea parties, weddings and other occasions at very competitive prices.

20% of your china hire cost will be donated to the charity of your choice.

For more information, a price list and photos, please see my Facebook page:

Green Farm Vintage China Hire

Email: carole.homer@btinternet.com

Tel: 01449 741498

Mobile: 07879265756



BusyB

Quality Dressmaking, Alterations and Ladies Formal Gown Hire

A professional bespoke service from a friendly local dressmaker, now also providing a hire service for ladies formal wear – call for an obligation free quote.

Find me on Facebook as 'Bev Busyb'

or Google Maps – search for 'BusyB'

Tel: 01449 737618 Mob: 07753 177703

email: busybev@btopenworld.com

www.busybev.co.uk



Bildeston Bookworms

Hello Bildeston. Hope you are all keeping well. As I write this we are moving further away from 'lockdown' and closer to our unknown future. Pubs and restaurants are opening again, beaches are full as we celebrate the summer in true British fashion. For some we are all completely fine!

As is the titular character in our next book, '**Eleanor Oliphant is Completely Fine**' by Gail Honeyman. Eleanor struggles with appropriate social skills, tends to say exactly what she's thinking and has a life where every aspect is carefully timetabled to avoid unnecessary human contact. She goes home on a Friday night after work, heats up a Tesco pizza, drinks two bottles of vodka and speaks to nobody until Monday morning. Every Wednesday she has an uncomfortable telephone conversation with her mother. That is Eleanor's life.

Until she meets Raymond, the inept and unhygienic IT guy from her office. When they save an elderly gentleman who has fallen, the three rescue one another from the lives of isolation that they had been living. Like a pebble dropped into a pond, the ripples are far reaching and allow others to enter Eleanor's world and for Eleanor to slowly allow them in, albeit at times reluctantly.

The many reasons for Eleanor's isolation are gradually unpicked as the novel unfolds; as well as the mystery of whether there is actually something wrong with her, or whether it is just that without social interaction, our ability to understand what is appropriate behaviour in the world simply withers away.

Eleanor is hilarious. Her thinking brings a smile to your face as you get to know her. She is like a flower, slowly opening to the possibilities that life has to offer. The characters aren't goodies, baddies or plot devices, they are just people, many we can recognise from our own lives. The overwhelming emotion is kindness.

This is an '*oh so easy to read*' book, full of quiet warmth and deep, unspoken sadness. At the same time, it is uplifting and makes you want to throw a party and invite everyone you know and give them a hug, even that person at work everyone thinks is a bit weird.

It was a book we all really enjoyed, raising discussions about loneliness, nature versus nurture and about all how we all react to those who are a bit different.

Highly recommended by all of us, I would happily read it again, just to spend time with our heroine.

As Eleanor says, "I have always enjoyed reading, but I've never been sure how to select appropriate material. There are so many books in the world--how do you tell them all apart? How do you know which one will match your tastes and interests?" Well, you could look at our reviews and see if any pique your interest. This really is one to try.



Make an entrance

With aluminium, timber, UPVC & composite doors

★★★★★ MULTI AWARD-WINNING

Frames Conservatories

Your Complete Home Improvement Centre

Direct

For doors galore,
call us now on:

01284 799470

Unit 3, Barton Road Retail Park, Bury St Edmunds, Suffolk IP32 7BE (Nr Farm Foods)

or visit www.fcdhomeimprovements.co.uk

ALUMINIUM PRODUCTS ★ CLADDING ★ WINDOWS ★ DOORS ★ CONSERVATORIES ★ FASCIAS & SOFFITS

Eco SYSTEMS **Tree and Grounds Care**

**Tree Surgery, Felling, Dismantling,
Hedge Maintenance, Stump Grinding,
Woodland Creation,
Commercial Grass Cutting**

Fully Insured

**NPTC qualified Council approved contractor
FREE no obligation quotations and advice**

DAN STANMORE

**Bildeston 01449 741255 • Mobile 07980 290781
Woolcombers, Duke Street, Bildeston IP7 7EW**



NEWS FROM BILDESTON SURGERY

Our workload is increasing at a rate of knots! We are still only able to offer telephone triage, our Clinicians will book in face to face appointments where needed. Remember you can also use the EConsult on our website.

We are getting more people just turning up at the surgery expecting to be seen- Please don't! This is for your own safety as well as ours.

We are also getting patients venting their frustrations on Clinicians and staff. We fully understand how challenging the past few months have been and have been doing our very best to work as effective and safely as we can. Please be nice to us!!

We have some good news- our new Dispensary is up and running. This is something we have been wanting to do for a long time and we are really pleased with it.

We also have a new telephone system, our old one was struggling with the volume of calls both in and out. We now have a "cloud based" system and more lines. After an initial couple of teething problems it working well.

We are currently thinking about how we will run our Flu Clinics this year – we will keep you updated with this.

Finally a huge THANK YOU to our volunteer delivery drivers who have now returned back to their own jobs. They truly went above and beyond – between them they clocked up over 5000 miles!

MASKS MADE TO ORDER

Cotton 3 pleated masks, made to order.
Cost £2.50 or a donation to SAS (Success After Stroke)
based in Suffolk which provides social, health and well
being support for stroke survivors and their families.

Through our team of professionally qualified therapists and
dedicated volunteers we aim to help our members regain
their confidence and rebuild their lives.

Please ring 01449 740963



S.A Roofing

Steven Allum

Specialising in Re-roofing, Repairs,
Flat roofing & all types of lead work

Contact: 01449 258346

07545071147

Email: sarroofing@hotmail.co.uk

Stowe Veterinary Group

For a professional caring service

Practices located in:

Stowmarket

Stowe Veterinary Centre

01449 613 130 • stowevets.co.uk

Stowe Farm and Equine Centre

01449 776 201

Needham Market

The Mustard Pot Veterinary Surgery

01449 722 198 • needhamvets.co.uk

Ipswich

Ipswich Veterinary Centre

01473 555 000 • ipswichvetcentre.co.uk

Elmswell

The Old Tea Room Veterinary Surgery

01359 241 761 • elmswellvets.co.uk

Bury St. Edmunds

Moreton Hall Veterinary Centre

01284 747 000 • moretonhallvets.co.uk



Independent practices with a personal approach



Paul's Carpentry

**All Carpentry projects considered large
or small**

**Decking, Fascia and Barge Boards, Fences, Pergolas,
Garden Rooms, Sheds.
and Much More**

Mobile: 0779 234 0365

Tel: 01449 616888

[email:paulhb100@protonmail.com](mailto:paulhb100@protonmail.com)

NHS TEST & TRACE - HOW YOU CAN HELP

We all have a part to play in reducing the spread of Covid-19 and you can help by sharing the following messages and resources through your networks:

If you develop symptoms of coronavirus, you must immediately self-isolate at home and get a test. Click here for more information on getting a test:

<https://crm.communityactionsuffolk.org.uk/>

If you test positive, you must share your recent contacts with NHS Test and Trace. If you are advised to self-isolate by NHS Test & Trace, you must do so. By following instructions to self-isolate, anyone who has had close recent contact with someone with coronavirus will be protecting their family, friends, colleagues and other people around them. This will break the chain of infection, helping to avoid a second peak and safely get life back to normal.

More information about Test and Trace in Suffolk is available at

www.suffolk.gov.uk/testing

Please find a range of resources relating to Test & Trace, including a video by the Director Of Public Health setting out the broad principles and how it works below:

Suffolk's Director of Public Health talks about Test & Trace -

<https://youtube/QCVZK-afl5s>

<https://www.suffolk.gov.uk/coronavirus-covid-19/covid-19-testing-in-suffolk/>

<https://www.suffolk.gov.uk/coronavirus-covid-19/latest-information/>

<https://www.suffolk.gov.uk/council-and-democracy/council-news/show/new-plan-sets-out-how-suffolk-will-prevent-and-respond-to-covid-19-outbreak>

EAST ANGLIAN
DAILY TIMES

IPSWICH STAR

Don't be a
TOSSEY

KEEP SUFFOLK CLEAN

Be part of it!

BBC SUFFOLK

95.5 FM | 95.9 FM | 103.9 FM | 104.6 FM | bbc.co.uk/suffolk

Suffolk
Creating the Greenest Co.

greensuffolk.org | twitter.com/greensuffolk



**CONNECT
for health**
Being Well Together

Social Prescribing in Bildeston

What is Social Prescribing?

Social prescribing is a way for local agencies to refer people, or for people to self-refer to a Community Connector. Community Connectors give people time, focusing on 'what matters to me' and taking a holistic approach to people's health and wellbeing. Through shared decision making or personalised care and support planning, Community Connectors connect people to community groups and agencies for practical and emotional support.

What is Connect for Health?

We know that taking care of your health involves more than just medicine. With Connect for Health you can get specialist support for more than medical issues. The service is free and available to anyone over the age of 18.

Your local Community Connector will arrange an appointment to spend time with you exploring what activities and/or local support could improve your health and wellbeing.

Your Community Connector will then assist and support you to plan your next steps.

The Community Connector can help you with a range of issues, including:

- Welfare benefits and financial support
- Emotional wellbeing
- Healthy lifestyle choices
- Arts, culture and creative activities
- Life changing events such as birth, retirement, bereavement
- Long term health conditions
- Loss of confidence/purpose
- Poor health linked to housing or housing conditions
- Accessing work, training, education and volunteering

A Community Connector is someone who is:

- Available to talk to you confidentially
- Able to give practical, helpful, non-judgemental advice
- Able to help you decide what you would like to do to improve your health and wellbeing.
- Able to refer you to appropriate services and activities.



Sophie Cummins
Community Connector
for
Bildeston and Hadleigh

How do I access the service?

It's simple, you can talk to your GP, social care and healthcare professional or surgery staff to refer you or you can self-refer by calling 01473 835477.

For more information, please visit:

<https://suffolkfamilycarers.org/connectforhealth/>

or you can search for us on twitter by searching @SocPrescribeSFC

SEAGER SWEEPS

Professional Chimney Sweeping Services

**Chimney Sweeping
Prices From £50**

For 2020/21

(For any standard chimney or lined stove)

Book online

www.seagersweeps.com

Tel: 01449 741595 / 07958739686

Email: info@seagersweeps.com

Bildeston, Ipswich, Suffolk, IP7



ANDYS LOGS

Well Seasoned Barn Stored Hardwood Logs

Loads Delivered or Pick Up

Wood cut to size for any Heater

Large bags of wood collection only

CALL ANDY 07881 684687

**Bags of wheat for Chicken feed also available collection only*

Canine Wellbeing At The Pheasantry

Wattisham, Suffolk IP7 7LA

Dog and Puppy Day Creche

We provide a very special service of looking after your dog or puppy. In the comfort of our own home, whilst you are at work, or whilst your dog is recovering from veterinary treatment. Why not allow your puppy to socialise with other canine friends. Daily collection and delivery is available.

Dogs on Holiday

Whilst you are on holiday, why not let your canine friend have one too.

She/he can come and stay in the comfort of our own home, where she/he will be treated as one of the family.

Also available

Canine Hydrotherapy

For more details phone:

01449 740659 mobile 07956286056

or visit our website: www.caninewellbeing.co.uk

NEWS FROM BILDESTON SPORTS FIELD MANAGEMENT COMMITTEE

Thank you to all those of you who have shown an interest in the progress of the sports field and pavilion. To bring you up to date so far:

The A.G.M. should have taken place in June but will take place as soon as Government restrictions on public meetings are lifted. In the meantime, we will continue to make improvements so that the pavilion is ready to welcome bookings and events. We can take provisional bookings but obviously these will depend on the lifting of restrictions.

The Community Pay Back Team, who have done a fantastic job on bringing the hall, corridor and toilets up to scratch, are keen to continue their good work as soon as they are allowed to.

The Committee is ready to submit their application for an alcohol license, any enquires regarding this, please contact the Secretary.

Bildeston Rangers are preparing for the start of the new season and those of you who go along to the sports field will see that posts and rails have been erected around the pitch, this is a stipulation of the Football Association for the league in which the club plays. We would be grateful if you can walk on the outside of these. They have also re-seeded the goal mouths of the main pitch. Any of you familiar with this will know how difficult it is to keep these in good condition particularly on the very wet field that we have. We also know how good it is to practice in a proper goal with a net so there is now a net on the practice goal near the main car park, please use this one to perfect your goal scoring and goal saving skills. We wish Bildeston Rangers all the best for another successful season.

It is essential that all dogs are kept on short leads and off the pitch on the area beyond the public car park, whilst we understand it is a great place to exercise your dog, please keep this to the end away from the football pitches.

Should your dog need to poo please clear it up as there is nothing worse for players, children or any of us to find ourselves stepping in it.

The final plea, please put all litter in the bins provided (one on the road at the entrance to the car park and another on the car park behind the pavilion) or take it home with you.

It has been a great place to go and exercise and just take in the freedom that we have been able to enjoy in Bildeston during these very strange times, so please look after it and continue to use and enjoy it.

If you would like more information about the Sports Field or Pavilion or would like to volunteer or become more involved please contact either of the numbers below.

Secretary 07711904515 or Bookings 07766527433 or email angelachapman99@gmail.com.

Thank you from the Sports Field Management Committee.

LAXFIELD HOUSE NURSING HOME

BRENT ELEIGH, Nr LAVENHAM, SUDBURY, SUFFOLK

Situated in a quiet village location with beautiful gardens, offering residential and full nursing care for elderly people.

A highly trained team of nursing sisters and care staff provide excellent nursing care with kindness and compassion, ensuring privacy and dignity at all times.

** Long or short term respite care available **

A warm welcome is always extended to all visitors



All rooms are well appointed with en-suite facilities.
Nurse Call System, Passenger Lifts, Various Public Rooms

This nursing home was established over 25 years ago by the current proprietor and family with ongoing input and management.

**Enquiries to - Mrs J. Carne RGN, RM, (Matron)
Mrs E. P. Knight RGN, RM, Mr N. Knight (Proprietors)**

Telephone (01787) 247340 / 495

**enquiries@laxfieldhouse.co.uk
www.laxfieldhouse.co.uk**



Member of the Registered Nursing Home Association

Recipe of the Month

Mexican Veggie Wraps

with thanks to Alison

Ingredients

These wraps are a great idea for garden picnics this summer.

Serves 4

400g tinned Kidney Beans drained and rinsed
50g Soured Cream
Juice of half a Lemon
1 Sweetcorn Cob or small Tinned Sweetcorn
½ Red Onion finely chopped
125g Cherry Tomatoes, halved
2 tbsp Tomato Ketchup
½ tsp Chipotle Paste
Large Handful Coriander roughly chopped
4 Large Tortilla Wraps



Method

1. Whizz the beans, soured cream, lemon juice and plenty of seasoning in a food processor until smooth. Set aside
2. In a large bowl mix the sweetcorn, red onion, cherry tomatoes, ketchup, chipotle paste, coriander and seasoning
3. Place a wrap on a board and spread a quarter of the bean puree in a line down the centre, leaving a bit of a border at each end. Top with the quarter each, lettuce, sweetcorn mixture and cheddar.
4. Fold over the ends then wrap and seal. You could make secure with a cocktail stick.
5. Repeat with remaining wraps and filling.
6. Halve and serve.

SCARECROW COMPETITION DETAILS

Thank you for all your scarecrow entries. So far we have 40!

To confirm your entry you need to have paid your entry fee of £2.50 please. You can drop it off at The Old Post Office, 90 High street, Bildeston

I will be producing a map of all the gardens where the wonderful scarecrows will be.

Mark Murphy from BBC radio Suffolk will be coming to Bildeston to judge the scarecrows on Saturday 8th August from 11am.

Chamberlin Hall Management Committee have kindly donated the prize money.

1st prize £50 2nd prize £30 3rd prize £20

All money raised for the competition and GRAND DRAW will be donated to the Suffolk Community Foundation.

GRAND DRAW

This will take place after Mark has seen all the scarecrows and presented the prizes at approx 1.30pm in Chamberlin Hall car park.

You are welcome to come but please observe social distancing at all times.

We have some fantastic prizes!

£100 Amazon vouchers. Taylormade joinery

Meal for two at The Bildeston Crown

Meal for two at the Lindsey Rose

Two cases of Mauldens ale....all from James Buckle.

Hand made bag. Lynne Edwards MBE

Vouchers from The Kings Head

Hamper of goodies from Bildeston village stores

Cream tea for two at Corncraft

2 tickets for a match at ITFC

Pamper pack...Tina and Melissa Essential Holistic Therapies.

Chocolate hamper..Bildeston newsagents

Meal for two at The Flying Fryar

A Tracey Robinson cake and cake slice

.....and lots more.

Worzel Gummidge and Aunt Sally will be under the clock tower on Friday 31st July, Saturday 1st August and Friday 7th August from 11am till 1.30pm if you would like draw tickets or maps, or you can call me....

Debbie Bailey 01449 740375

KEEP CALM AND CARRY ON SCARING CROWS!

There have been so many Bildeston events cancelled this summer. leaving us disappointed and sad.

But do not despair! Get ready for **THE SCARECROW COMPETITION** running throughout August in aid of The Suffolk Community Foundation, a charity that supports **all** Suffolk charities, many of which have suffered financially due to Covid-19. An entry fee of £2.50 per scarecrow goes directly to the charity and there is the **GRAND DRAW** with some amazing prizes with **ALL** profits going to the SCF. (see left)



The scarecrows will be judged by BBC Radio Suffolk presenter **Mark Murphy!**

Prizes will be awarded for the most imaginative creations.

Chamberlin Hall Management Committee have generously donated £100 in prize money. 1st prize £50; 2nd prize £30; 3rd Prize £20. If you are able to donate anything for the **GRAND DRAW** that would be amazing and extremely gratefully received.

From **August 1st** scarecrows will be displayed in front garden or front window for the whole village to see.

The scarecrows will be judged on **8th August from 11.00am** and prizes will be awarded for the most imaginative creations.

It will be lovely to see dozens of colourful scarecrows around the village to make us smile.

If you're not sure how to go about making one give me a call and I will give you some suggestions! Have fun!

Debbie Bailey 01449 740375

**Now Frying At Market Square
Bildeston**

Thursdays 4pm – 7.30pm

Fridays 11am – 1:30pm



**Local Mobile
Fish & Chip Shop**

**Functions Catered For
Shows • Parties
Weddings • etc.**

**Telephone
01473 830771**

BILDESTON ELECTRICAL

Rewires, Extensions, Board Changes or New Installations

Any Alterations to Existing Installations

(lights, sockets, etc.)

Contact Ian

01449 743664 or 07754 723685



Done & Dusted Cleaning Service

A professional, reliable business offering:

- **Domestic Cleaning – regular cleaning or one off spring cleans.**
- **Commercial Office cleaning.**
- **Ironing service – Collected and delivered back to your door**

Please call for a no obligation quotation:

Office 01449 258574/Mobile 07402 045572

COLLINS & CURTIS
MASONRY LTD

est.1925

Memorial Stone Masons

*Dedicated craftsmen who
combine traditional with new techniques*

Bespoke memorials
Additional inscriptions
Restoration and cleaning
Home visits by appointment

01473 250932
www.collinsandcurtis.co.uk



N D ROSE
Int / Ext Decorating

- Decorating
- Wall / Floor Tiling
- Gutters Cleaned / Repaired / Replaced
- General Building Maintenance

**Local established tradesman 25
years experience**

**Free estimates good rates
References available**

Tel: 01787 211042

Mob: 07518 040465

3 Fen Street Boxford CO10 5HL

BILDESTON PARISH COUNCIL



DRAFT Minutes of a Virtual Council meeting (using Visual/Audio-Conferencing) held on Monday, 13th July, 2020 at 7.00pm

In attendance:

Councillors: Peter Hutchings (In the Chair)
Angela Chapman, Andrew Guttridge, Ashley Hubbard, Richard Lester and Virginia Tuck

Also Present: David Blackburn (Clerk) County and District Councillor
Robert Lindsay

C31/20/21 APOLOGIES FOR ABSENCE

There was an apology for absence from Councillors Leigh-Hunt and Powell.

C32/20/21 DECLARATIONS OF PECUNIARY AND NON-PECUNIARY INTERESTS

The following declarations of non-pecuniary interest were recorded:

Kings Pightle Management Committee – Councillors Hubbard & Lester

Parochial Church Council – Councillor Lester

Sportsfield Management Committee – Councillors Chapman & Hutchings

C33/20/21 DISPENSATIONS IN RESPECT OF PECUNIARY INTERESTS

There were none.

C34/20/21 MINUTES OF PREVIOUS MEETING

It was AGREED: That the minutes of the meeting held on 8th June, 2020 be approved and adopted.

C35/20/21 MATTERS RAISED BY PARISHIONERS/PERSONS ATTENDING THE MEETING

There were none.

C36/20/21 DISTRICT AND COUNTY COUNCILLOR'S REPORTS

Councillor Lindsay submitted a report which included information about:

- a. Test and Trace Arrangements in Suffolk
- b. Government Funding for Councils and the Financial Implications of the Pandemic
- c. A new Timetable for the Babergh & Mid Suffolk Joint Local Plan
- d. Revised Cycling Strategy for Suffolk

A resident had raised a matter with regard to anti-social behaviour which Councillor Lindsay would pursue.

C37/20/21 EMERGENCY TRAFFIC MEASURES IN BILDESTON

Further to Minute No. C23/20/21, there was a further discussion about the introduction of Emergency Traffic Measures in Bildeston and the decision confirmed not to pursue this at the present time.

This was in view of the representations received from the local community and some of the practical issues that had been identified including loss of parking spaces in the Market Square, the impact for large delivery vehicles and the extent of the modifications that Suffolk County Council

had made to the Parish Council's proposals.

The process had been helpful in identifying some key issues in respect of traffic calming that might be introduced in the future including:

- Building out into the road next to Tower House
- Works next to the Stores
- Works to the kerb outside the Old Post Office
- Potential removal of some of the parking bays in the Market Square

There was a discussion about whether or not these measures might be addressed as part of the Parish Council's request to have 20mph speed restrictions introduced in the centre of the village. There were concerns expressed about whether this would further delay the introduction of the 20mph scheme which everyone agreed was undesirable.

RESOLVED:

- a. That the Parish Council welcomes the input it has received from members of the local community regarding the review of traffic measures near to the Market Square;
- b. That the issues raised as part of the review be used to inform the development of traffic calming measures for the village in the future; and
- c. That the scheme to introduce a 20mph speed limit be progressed without amendment, subject to County Councillor Lindsay investigating if there are any "quick wins" possible from the issues identified that might be implemented alongside the 20mph scheme but which will not delay its implementation.

C38/20/21 CEMETERY HEADSTONE

An update was provided on correspondence sent to the family who had installed a headstone in the Grove Cemetery without the Parish Council's consent.

C39/20/21 BILDESTON CORONAVIRUS SUPPORT GROUP AND FOOD BANK

There was a discussion about the work being undertaken by the Bildeston Coronavirus Support Group and Food Bank and the aspirations of the organisers to broaden the scope of their work. The Chair of the Parish Council had been contacted and the Parish Council asked to set up a separate bank account to support the work of the Group and enable it to access funding. The matter was discussed by Members of the Parish Council and the consensus was that further information was required so that there was a clear and consistent plan in place to map out the future development of the Group.

RESOLVED: That the Chair writes to the organisers of the Bildeston Coronavirus Support Group and Food Bank seeking further information about:

- the level of support that they are providing to residents of Bildeston (and other villages);
- how this might change in response to the end of lockdown and removal of shielding;
- their proposals for how they intend to change the scope of the Group; and
- if the organisers are willing to support the Group in the medium to long term so that any widening of the scope is sustainable.

C40/20/21 VILLAGE AMENITIES

Prior to the meeting, images of the new Bildeston Rangers Football Club signs had been shared with Members of the Parish Council. Signage to their ground was required by the Football League in which they played. The consensus was that the Football Club should be requested by the Parish

Council to replace the sign on the wall outside Bildeston Hall to a more simple and sympathetic "To the Sportsfield" sign in black and white, which would be appropriate within a Conservation Area. Councillor Chapman would liaise with the Football Club about this matter.

Councillor Hubbard referred to the settlement of spoil in respect of various graves at the Grove Cemetery. He would ask the Maintenance Operative to level the ground where the burials had taken place over six months previously.

Councillor Lester reported that a quotation had been obtained for strengthening the footbridge at Kings Pightle. Grant funding would be sought and an item presented to the next meeting of the Parish Council with a view to accessing funding from the John Artiss Nature and Conservation Fund.

Councillor Chapman reported that a local parishioner had raised concerns about various matters at the Sportsfield. In response, it was agreed that mole traps be purchased for use by the Maintenance Operative to deal with the problem and that a replacement bin be provided, larger than the previous one, to help reduce the amount of litter.

Councillor Chapman enquired about the installation of replacement bollards in the Market Square. It was noted that the installation was due to be progressed by the Maintenance Operative.

C41/20/21 PROJECTS

The website was working well and there was no further information to report.

Councillor Hubbard gave an update on design of the new Village sign and there was a discussion about the main images within the sign including the need to insert a circle around the cross on the Church.

RESOLVED: That Councillor Hubbard seeks a colour image of the proposal from the supplier, The Village Sign People, and this shall be submitted to the Parish Council for a final decision before an order is placed for the sign to be made.

C42/20/21 FINANCIAL MATTERS

It was AGREED: That the following payments be confirmed as being authorised:

Payee	Description	Budget Category	Amount (inc. VAT)
David Blackburn	Clerk's Pay	Salaries & Expenses	£170.52
David Blackburn	Expenses	Salaries & Expenses	£18.00
Fiona Lemon	Community Development Worker	Salaries & Expenses	£171.58
HMRC	PAYE (to end Jun)	Salaries & Expenses	£708.40
Tomlinson Groundcare Ltd	Mower Service	Playgrounds & Open Spaces	£1,652.89
Tomlinson Groundcare Ltd	Mower Maintenance	Playgrounds & Open Spaces	£125.99

(Note: All items to be paid for from the General Fund).

It was AGREED: That the Quarterly Budget Monitoring Report (First Quarter 2020/21) be received and approved.

The Clerk reported that Suffolk Association of Local Councils had confirmed that they had received the Parish Council's submission and would notify the Clerk once the internal audit had been completed. The Annual Governance and Accountability Return would then be submitted to the next Parish Council meeting for approval prior to papers being sent to the external auditor.

It was AGREED: That the update be received and noted.

C43/20/21 PLANNING MATTERS

Planning Appendix A - Items for comment by the Parish Council

Reference	DC/20/02182
Location	Planning Application - Erection of 1no. dwelling and driveway using existing access, provision of additional parking, landscaping and boundary treatments
Proposal	Land to rear of Verandah House 150-152 High Street Bildeston Ipswich Suffolk IP7 7EF
Representation	The Parish Council wishes to object to the grant of planning consent on the following grounds:
<ul style="list-style-type: none">• The structure's prominence is incongruous to its setting and visually obtrusive within its context and hence, detrimental to the character of the area as also observed by the Suffolk Preservation Society.• The height of the ridge line at 5.9 metres is excessive and higher than the single storey buildings that are close to it. This is caused mainly by the pitch of the roof which is considered to be too steep and should be reduced so that the scale of the building is more acceptable.• The solar panels on the proposed roof would be visible from Wattisham Road and detrimental to the street scene. Furthermore, if they are to be incorporated within the scheme, it is felt that they would be more effective on a roof with a shallower pitch.• The choice of a zinc roof treatment is understood in allowing the history of the building to be "read" however, the applicant is encouraged to consider other treatments that might achieve this outcome in a more appropriate manner within this Conservation Area.• There are access issues in respect of:<ul style="list-style-type: none"><input type="checkbox"/> the proposed access point on High Street<input type="checkbox"/> the proximity of the neighbour's drivewayThe problems regarding access have been identified by the Highways Officer and demonstrate the problems inherent in developing such a constrained site.• The Parish Council has serious concerns about how the professional views of an Arboriculturist are only being sought by the Planning Authority at this stage, after an application has been made and approved so recently to fell a significant number of trees on the plot. The Parish Council wishes to enquire how this has happened as it appears to have been a significant oversight in giving proper consideration of the extensive range of proposals at Verandah House.	

Planning Appendix B - Items determined by Babergh District Council as relevant Planning Authority

Reference	DC/20/02322
Location	34 High Street, Bildeston, Ipswich, Suffolk IP7 7EY
Proposal	Proposal & Location of Development: Application for works to trees in a Conservation Area - Fell 1No Eucalyptus and reduce 1No Holly tree.
Decision	Granted by Planning Authority

C44/20/21 MATTERS BROUGHT TO THE ATTENTION OF THE COUNCIL

Councillor Tuck referred to suggestions made by a local parishioner about relocating the Fish and Chip Van in view of their perception that parking congestion was being caused by the presence of the Van in the Market Square. The consensus was no action was required immediately but that the matter should be kept under review.

Councillor Chapman referred to the fact that the Community Development Worker had indicated that she would not be continuing in her role and asked that this be included on the agenda for the next meeting.

Councillor Chapman enquired about the re-opening of Chamberlin Hall Playground and the Clerk undertook to arrange this and provide appropriate signage.

The Chair referred to information was being circulated within the local community about the possibility of a Covid-19 testing centre being located in Bildeston. It was understood that every community should be no more than 30 minutes from a testing centre. Whilst local residents appeared to be in favour of such a measure, it didn't seem that it was likely to happen in practice.

C45/20/21 STAFFING MATTERS

Interviews had been arranged by the Clerk for the position of Maintenance Operative and these could be conducted on Thursday, 16th July, 2020.

The position of Clerk & Responsible Financial Officer has been advertised via the Suffolk Association of Local Councils and the Parish website. The deadline for applications was Monday, 27th July, 2020.

The meeting closed at 8.43pm

Dunstone Optometry

3 Queen Street, Hadleigh

For your entire eye care needs

including contact lenses, latest Swept Source OCT eye scanner, examination of children and home visits

Frames include: Tom Davies, Tiffany, Ray-Ban & Esprit

To find out more please call in, telephone

01473 823755 or see **dunstoneinsight.com**



Stuart Walker

Decorating, Painting & Refurbishments



A locally based company offering an honest and reliable service

Painting - Decorating - Refurbishments - Repairs

All work considered indoors & out! Fully Insured & free quotations provided

Please contact Stuart on Tel: 07711 606464 or 01449 740387

Email: stuma1@hotmail.co.uk

COUSINS & SON BILDESTON LTD

available to carry out all your building requirements
from
Renovations / Alterations / Extensions
to
General Repairs

Please contact Paul for a free estimate

01473 658919 or 07876 244461

or email paul.cousins268@btinternet.com

PLUMBING • HEATING • ELECTRICAL
BENTLEY
-GROUP.co.uk

Tel 07929 333356
enquiries@bentley-group.co.uk



**SPECIALISTS IN OIL BOILERS,
SERVICE, REPAIRS & REPLACEMENT**

- Oil tank replacement
- Hot water cylinders serviced, repaired and replaced
- Heating service repair, replacement and upgrade
- Bathroom/showers installed and all other general plumbing work
- 95% breakdowns repaired within 1 hour on site - fast response
- All work guaranteed for a minimum of 12 months - parts and labour

**"I needed advice on
redundancy, the adviser has
given me so much help I can
now see a way forward"**

Need help with benefits, employment, money worries,
housing, relationships or anything else? We can help

**For Patients of Bildeston, Boxford, Hadleigh
Surgeries**

Free, confidential telephone advice 10am – 3pm

Tuesday	call	07834 429 361
Wednesday	call	07586 741 250
Thursday	call	07379 202 164



Sudbury & District Citizens Advice, Keyse House, Acton Lane, Sudbury, Suffolk, CO10 1QN
www.sudburycab.org.uk email advice@sudburycab.org.uk

**Friendly Experienced
Teacher offers
Individual**

MATHS Tuition

**Speciality
Confidence Building**

KS1 – KS3

**Call Colin Plummer on
01449 736918
for details and availability
or email:
colinp52@gmail.com**

Natalie Mottram

Physiotherapist

HPC & CSP Registered



- Muscle and joint problems
- Neurological conditions
- Stroke rehabilitation
- Fall prevention & balance rehabilitation
- Pre and post-surgery treatment

For more information
and rates please contact:

T: 01787 248061

M: 07758255583

E: nataliejmotttram@gmail.com

**HOME
& CLINIC
VISITS
AVAILABLE**

Physiotherapy Clinic: The Beauty Gallery,
3 High Street, Lavenham, CO10 9PX

CHIMNEY SWEEP

ECO SWEEP

CHIMNEY SERVICES

NEW POWER SWEEPING METHOD USED

FOR A MORE THOROUGH CHIMNEY CLEAN
THAN BRUSHES.

INDUSTRIAL HEPA FILTERED VACUUM.

FULLY INSURED.

INSURANCE RECOGNIZED CERTIFICATES ISSUED.

SPOTLESS, RELIABLE AND FRIENDLY SERVICE.

ALL CHIMNEYS, WOOD BURNERS, AGA, BOILER

FLUES SWEEP.

GUILD OF MASTER SWEEPS CERTIFICATED MEMBER.



Power sweeping



TEL. 01359 232335

07534 525 263
01449 258 254



Professional & Reliable Service



**Plumbing, Bathrooms, Heating, Boilers, Servicing,
Underfloor Heating, Tiling, New builds & Renovations**

gidneyph@outlook.com www.plumbinginsuffolk.com

THE FLOWER SHOP

Your local independent florist

Creating beautiful
arrangements for
all occasions using
only the freshest,
seasonal flowers

Visit us in store
to view our flowers,
plants and
homeware items,
or order by phone
or online

**Local and nationwide
deliveries**

• ESTABLISHED 2013 •

www.theflowershopkm.com THE FLOWER SHOP AT KERSEY MILL Near Hadleigh IP7 6DP 01473 805156

****Pilates and Yoga classes now at Kersey Mill****

If you want to exercise both your body and mind as well as improving your sense of well-being, strength, flexibility and mobility then Pilates is for you! We are passionate about bringing the benefits of Pilates/Yoga to everyone and with a highly qualified team of instructors we can certainly help you improve muscle tone and core stability, building strength from the inside out, re-balancing the body and bringing it into correct alignment.

BEGINNERS CLASSES AND FREE TASTER SESSIONS* ARE NOW AVAILABLE AS WELL AS PRIVATE 1:1's

** on selected classes*

We now offer small Yoga classes too to add to your well-being experience at Kersey Mill. Please get in touch if you would like any more information.

Whether you are new to Pilates/Yoga or have been enjoying the benefits for years, we feel confident that we can accommodate your needs to achieve results.



ECO CHURCH AWARDS



St. Mary Magdalene Church in Bildeston is working towards becoming an 'ECO CHURCH'- an awards scheme for churches to demonstrate how they care for God's earth in these challenging times. 'Eco Church' is an A Rocha UK project that runs in partnership with Christian Aid, The Church of England, the Methodist Church and Tearfund.

At Bildeston Church we have begun using this scheme to help

us live as individuals and as a church community, in a greener way.

As individuals many of us are doing much already to care for our environment.

Eco church is a project that helps guide us through different areas of Church life giving us a chance to reflect on our lifestyles and make changes needed for a more sustainable living. Caring for creations is part of showing how we love our neighbours and are faithful to God.

If you would like to be involved or would like more information, please contact me or look on A Rocha's web site (www.arocha.org.uk) as it has many great ideas and suggestions. This is a great opportunity, it will be challenging but it will be transforming, showing that what we do today in our country can help reduce the effects of climate change in the poorest parts of the world, which have already seen devastating changes to their weather patterns.

The future of our planet is in our hands.

The awards for this scheme are bronze, silver and gold. I will let you know when we have reached the targets needed, in all areas, to receive a bronze award.

God's blessings, Teresa Lester

teresalester47@gmail.com

Tel: 01449 744120

**Benefice of Bildeston w Wattisham, Lindsey, Whatfield and Semer,
Nedging and Naughton.**

Pastoral Letter – August 2020 from Revd Elke Cattermole

*"Ask the Lord of the Harvest, therefore, to send out workers into his harvest field".
Matthew 9:38*



We may think of August as the month we have our holidays, especially if you have children. This is as we know living in such a beautiful rural area of Suffolk is not the case for our farmers. August is one of the months that they gather in the different types of crops that are needed to sustain the food chain.

Celebration of harvest is an ancient custom and used to be celebrated at the beginning of the Harvest season on 1 August and was called Lammas, meaning loaf mass. Farmers made loaves of bread from the fresh wheat crop. These were given to the local church as the communion bread during a special service thanking God for the harvest. Nowadays the festival is held in our churches in September or October after all the harvest has been collected in.

This year has been difficult for our farmers, they had a very wet winter and not really a spring and went into a period of very sunny summer weather and not much rain. Not all the crops are quite what they should be.

These last few months have been strange and difficult months, for all of us and affecting us in different ways. From the 1st August those who have been shielding will be able to go out and interact with other people. August this year may be a turning point in the way we have been living throughout this year.

As with farmers God has walked and been beside us through this difficult time and we have seen the beauty and creation of this world in different ways. Not just in the natural environment but through the love, care, and blessings we have shared with one another.

Whatever you are planning this August, take care and keep safe.

Early Harvest Prayer

*"We bless you, God of Seed and Harvest,
And we bless each other,
That the beauty of this world,
And the love that created it,
Might be expressed though our lives
And be a blessing to others,
Now and always." AMEN*

God Bless you all.

Revd Elke

ST MARY MAGDALENE CHURCH IS OPEN

Welcome to St Mary Magdalene Church, Bildeston. We are delighted to advise you that the church is now able to invite you in for private prayer.

We have been open since Sunday 28th June 2020 and are now open as follows;

Wednesday and Sunday

11.00 am – 12.30 pm

On Sunday there is a recorded online 'Act of Worship' also offered.

For more information about online worship and our opening hours visit our 'Church Near You' website: achurchnearyou.com/church/1899/

Sadly, we are not yet allowed to hold any form of public worship here, nor church viewing.

Please use the hand sanitiser provided and do not touch anything you do not need to. Please always keep a social distance as recommended by the government.

"May God bless you and your time of private prayer here".

Rev Elke Catermole

Revd John Cohen Memorial fund

The Revd J Cohen memorial fund is available to make grants to students of Higher Education to help in the purchase of reference books to assist learning. The fund is managed by the Bildeston Parochial Church Council (PCC).

This fund was set up in 1998 to help support those who live in the Parish of Bildeston attending Degree Courses or equivalent.

Each year successful applicants may be given money in the form of a Book token.

If you wish to apply please send your application to our PCC secretary, Silwood Barns, Consent Lane, Bildeston, IP7 7SB.

Please include in your application details of your University offers and please send us your exam results when received. We will consider applicants up until the end of August 2020, for those starting their courses in Sept/Oct 2020.

We look forward to hearing from you and hope we can help.

From the PCC of St. Mary Magdalene Church, Bildeston





Bildeston Community Coffee Centre

Baptist Church 9:15-11:30 **Every Friday**

Lunch club

Baptist Church 12.15 for 12.30pm start.....**1st Wed every month**

Craft it Together

01449 740716/741606 for details.....**1st Monday every month**

Strollers & Striders

Baptist Church Car Park 10.00.....**Every Monday**

Baby and Toddler Group

Baptist Church 9.15 to 11.30am.....**Every Tuesday**

Church Bell Ringing Practice

St. Mary Magdalene church bell tower 8.00 to 9.15pm.....**Every Tuesday**

Mens Breakfast

Baptist Church 8.00am.....**Last Saturday every month**

Chamberlin Hall AGM

Outside Chamberlin Hall 7.30pm.....**Tuesday 25th**

The usual activities and events planned for August could be cancelled due to the Coronavirus. Any meetings, clubs etc. still published, the Bugle would strongly encourage participants to check with the organisers if they are still being put on, before turning up.

**Meanwhile, please observe the social-distance advice.
Continue to wash your hands regularly and thoroughly,
and keep a face mask handy to use when entering any shop.
Stay alert, control the virus and save lives.**

**Keep well and let kindness and consideration
be the hallmark of our community.**

Please tell us about your forthcoming events in **September**
email: editor@bildestonbugle.co.uk



When you're finished with this Bugle please pass it on or recycle it.