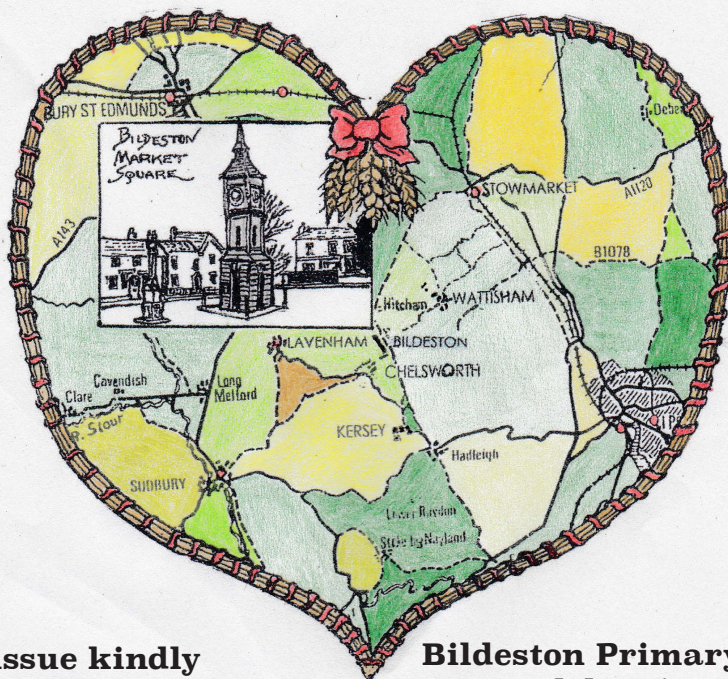


Issue number 336

October 2018



**This issue kindly
sponsored by -**

**Bildeston Primary School
celebrating its
50th anniversary
October 1968 - October 2018**



Saint Mary's Church, Bildeston, Suffolk.

The village magazine produced for the people of Bildeston



BILDESTON BUGLE ADVERTISING AND FREE CONTRIBUTION INFORMATION

Our aim is to provide every resident and organisation in Bildeston with a magazine which provides information of local interest FREE OF CHARGE. To that end we are required to be efficient in the space we use to print free notices. We endeavour to include interesting items, announcements for events open to the general public for free and items of a charitable nature free of charge. Ongoing free announcements need to be reduced to minimum size or make a contribution towards printing costs. Please check with us before submitting your advert and ALWAYS provide us with all of your contact details in order for us to send an invoice and receipt.

email: editor@bildestonbugle.co.uk

Sponsor a 'Bugle' - £15 per issue

and have a brief message of your choice printed on the front of the Bugle

Advertising Rates

	1 issue	12 issues (30% disc)	
1/4 page	£3.00	£26.00	65mm W x 92mm H
1/2 page	£6.00	£50.00	134mm W x 92mm H
Full page	£12.00	£100.00	134mm W x 190mm H

THE SMALL PRINT

All adverts, payments and items are required before the 17th of the month for inclusion in the following month's issue (except December).

The earlier free contributions are received the greater the chance of inclusion.

Please make cheques payable to Bildeston Bugle and send to:

The Editor, Bildeston Bugle, 14 Squirrells Mill Rd, Bildeston IP7 7DY

Receipts cannot be issued without your full postal address.

If we do not receive payment by the 17th of the month your advertisement may NOT be included

The Bildeston Bugle Management Team is:

Alan Jacobs (Editor) 01449 741645

Tricia Baldwin (Marketing & Advertising Revenue)

Christine Hubbard (Treasurer) 01449 740633

Stuart Law (Assistant Editor)

Alison Sims (Assistant Editor)

ED'S COMMENT

'It takes a whole village to raise a child' is an African proverb suggesting it takes the local community engaging with its children for each child to learn and develop in confidence, happiness and security. Bildeston is fortunate as, not only does it still have its own primary school, but one that is recognised as good by OFSTED, in a successful Federation with Whatfield CofE primary. These facts are quite crucial given the situation nationally with small rural schools. The Church of England Education Office recently published a report: 'Embracing Change: Rural and Small Schools' which said that schools with low pupil numbers were "difficult to justify" keeping open. It warned that schools with small numbers, that is around 100 pupils or fewer, are deemed to be most at risk. Bildeston has 99 pupils and Wattisham has 34 pupils. Even combined as a Federation that number remains well within the national 'Small School' category.

However, despite the report, the Diocese of St Edmundsbury and Ipswich said no CofE schools in Suffolk were currently at risk and there are no current consultations on school closures affecting church schools in Suffolk. A number of small schools in Suffolk already work successfully in federations, under one headteacher and one governing body." The report urged smaller schools to work together to best serve their communities with a "re-imagined" approach. That is precisely what Bildeston Primary school did. The Bildeston and Wattisham Governing Bodies' decided to work together as a Federation disbanding their own independent Governing Bodies and merging into one managing both schools under one headteacher. It was for exactly that reason, to secure the long term future and viability of both village schools, and continue to care for and 'raise' its own children.

The report came out on the back of the government considering yet more changes to school budgets. Small rural schools in England could face the risk of closure as a result of controversial changes to school funding currently being considered by ministers which could lead to 1,101 rural schools losing money at a time when headteachers are warning budgets are already at "breaking point".

According to an analysis by the Times Educational Supplement, the Government's own figures reveal that 40 per cent of small schools will suffer a cut to their budgets. The research suggests that the schools could lose up to 1.2 per cent in the first year of the new funding system, even with transitional funding in place. In following years it could rise up to 2.5 per cent if no such transitional funding is allocated. Officials had put in place a "sparsity factor" into its new funding formula, which would take into account a school's pupil numbers and how far it is from any other school. But according to a group which campaigns for fairer school funding, unless the Government acts, schools will close. "If the sparsity factor is not adequate, there will be a movement to the closure of small isolated schools with social consequences for communities and financial consequences for the transportation of pupils," Ivan Ould, chair of the group has said in an interview.

The Governing Body of Bildeston and Wattisham CofE Primary schools have deliberately ensured their budgets are currently strong enough to withstand these changes and are monitoring the impact of budget changes very closely. Although this is the first full school year of the Federation, for the past 3 years, under a special collaboration arrangement. The headteacher is head of both schools, both were inspected and both judged Good. A huge external validation of the work of the leadership team, teaching and non-teaching staff, the Governors, pupils and parents. So let us all celebrate the 50th anniversary of our local, very good, small rural primary school! Long may it continue.



HONEY BEE'S NURSERY

Hitcham Village Hall, Hitcham, IP7 7NE

FOR CHILDREN AGED 2 – 5 YEARS

Open Mon, Wed, Fri 9.15a.m. – 12.15p.m. or 3.15p.m.

Tues, Thurs 9.15a.m. – 12.15p.m.

Early Drop Off – 8.15a.m. Lunch Club Daily until 1.15p.m.

2 Indoor Rooms and Outdoor Areas

Ofsted Registered

**Early Years Funding accepted for all 3 & 4 year olds
and eligible 2 year olds. 30 hrs funding also
available.**

Contact: Sharon Scarfe 01449 740764 (hall) 01449 740581 (home)

Or visit **honeybeesnursery.co.uk**

**WANT TO LEARN TO PLAY
GUITAR, BASS, DRUMS?**

***MANY CONTEMPORARY STYLES COVERED, INCLUDING
ROCK, METAL, POP, INDIE, BLUES, FUNK AND MORE.***

KEYBOARDS, VOCALS, SONG AND LYRIC COMPOSITION

MOBILE DIGITAL RECORDING SERVICE AVAILABLE



ADAM KEETON

GOOD COMPETITIVE RATES

01449 744530 OR 07914 798374

FULL DBS + LOCAL YOUTH GROUP LEADER



Bildeston Primary School



Bildeston Primary School
Learning and Growing Together



150th Anniversary

OPEN SCHOOL

***All present & former students, staff and
community members welcome!***

Monday 8th October 9am – 12 noon

Do please come along to discover more about our school today and of course through the years. You could also email us with your historical or funny stories at the email address below or send in any old photographs. Please also let us know if you have any special links to our school.

If you are considering Bildeston Primary as a school for your child, we would welcome a visit from you. So why not use this opportunity to come and see our wonderful school and learn about its history. We would love to meet you!

Bildeston Primary School
Newberry Road, Bildeston, Ipswich, Suffolk, IP7 7ES
Telephone: 01449 740269
office@bildeston.suffolk.sch.uk
Website: www.bildeston.suffolk.sch.uk

**Sat
13 Oct**

Chamberlin Hall

BILDESTON'S COMMUNITY VILLAGE HALL

Indoor market

9.30-2.30pm

**CAKES . PICKLES . JAMS . SPICES .
GIFTS . HOMEWARES. CLOTHES .
CARDS . FOOD & REFRESHMENTS .
ART . AND MORE....**



To find out more call our bookings
secretary Debbie: 01449 740375
debandkevbailey@gmail.com



Chamberlin Hall

BILDESTON'S COMMUNITY VILLAGE HALL

RICHARD WHYMARK



**Saturday
13 October, 2018
Tickets £8
Doors open: 7.30pm**

**Tickets:
Debbie
01449 740375
Jean
01449 741362**

**CHAMBERLIN HALL
BILDESTON
IP7 7EZ**

Chamberlin Hall

BILDESTON'S COMMUNITY VILLAGE HALL



To find out more call our bookings
secretary Debbie: 01449 740375
debandkevbailey@gmail.com

What's on in October

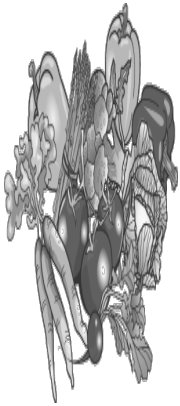
Every Monday 8.00pm to 10.00pm Badminton Club, Table Tennis & Darts

Everyone welcome, please remember to wear white soled trainers, not black.

Monday/Tuesday	3.45-8.00pm	MLSPA Performing Arts
Every Tuesday	1.30pm to 2.30pm	Keep Fit with Callum (pay as you go)
Every Tuesday	from 7.00pm	Snooker Club
Every Tuesday	from 7.00pm	Adult-dance-keep fit! (part of MLSPA)
Tuesday	7.15pm	Carpet Bowls (practice night & home games)
Wednesday	6.30pm	Drama Group (call Jean: 01449 741362)
Every Thursday	11.00am – 12.00	Zumba Gold with Sarah
1st Thurs of Month	7.30pm	Ladies Club
Every Friday	7.00pm	Bildeston Bowls Club social & short mat
(except the last Friday of the month due to Bingo)		
Every Friday	11am	Pilates for Improvers (call Claire: 07900 440141)
Every Friday	from 12.00	Pilates for Beginners
Saturday 13th	9.30pm - 2.30pm	Indoor Market & BBQ
Saturday 13th	7.30pm	Comedy Night with Richard Whymark
Friday 26th	7.00pm	Bingo! Massive Money Prizes!

CHAMBERLIN HALL BILDESTON LAWN BOWLS CLUB

What a successful summer it has been! All 3 teams in the Monday, Tuesday and Wednesday leagues did very well. For the first time Bildeston Bowls Club reached the final of the Thurlow Shield knock out competition, eventually losing by just one shot 33 - 32! The main reason for the club's success is the influx of wonderful new members who have thrown themselves into the spirit of the club and game. Some playing in competitive matches for the very first time. The Friday evening social and practice evenings were a great success and certainly helped everyone to improve their lawn bowls game. Congratulations to all finalists and winners of the club's end of season competitions. Now we move inside Chamberlin Hall each Friday evening (except the last Friday of the month when Bingo is held in the hall). If you are interested, just come along from 7.00pm and meet new friends, try your hand at short mat bowling, have a drink and chat. Meanwhile, a heartfelt thanks to all club members, all the captains, the members who helped cut the green, fork and Fairy (they know what we mean!) and the many supporters who watched some of our home games. We warmly welcome new members on any Friday evening.



BILDESTON

ALLOTMENTS

Have you ever thought
of growing your own
vegetables and flowers?

There are currently vacant plots, both full size and half size. Water is available on site, and the rents are reasonable.

If you are interested, please contact:

Robin Weaver, 741048, or Ashley Hubbard, 740633

Gardener

Tackling tasks -

Herbaceous, Shrub & Rose management

Lawn & Hedge maintenance

Planting - Design - Installation

A high standard of work, references & portfolio

Weekly - One-off - Seasonal duties

Hand-crafted HortSupports

Combs, Suffolk

Fred Waters - 07788 523146

CPH Property Services

Painting & Decorating (Interior & Exterior)

Fencing

Patios, Pathways & Shed Bases

Plaster Boarding & Tiling

And much more.....

Fully Insured & Free Quotations Provided

Telephone Chris: 01787 210536 or 07717059370

Telephone Paul: 01449 740020 or 07880727630

Email: chris.harman1990@gmail.com



COUNTRYSIDE OBSERVER

Scandinavian Flight Saga Final Part. Up and about fairly early, things are coming to life.



A few more a/c have arrived for the fly-in. The aero club have about 60 a/c booked in but there is plenty to interest the intrepid aviators from England. We are incidentally, the only visitors from UK so it is left to us to fly the flag for UK GA. I take the chance to ensure TMC is looking her best whilst flying "G-A" flag and apply a coat of Autoglym's finest silicone wax polish. The site is beginning to buzz, the general public turning up in some numbers. The museum has promoted this as an "open day" with outdoor stalls, helicopter flights, rides on classic fire engines and in a towed non airworthy Vertol

helicopter to name but a few of the attractions. By late afternoon time for some more adventures. We consult the locals, they suggest a trip to Backamo, a field some 20 minutes flying time away. It is PPR, within a few minutes we have permission for a visit and we are on our way. Backamo Flygklubb operate two Ikarus C42s from here. Inside are a very smart SV4B Stampe and a Cessna Cardinal RG. The Stampe alas hasn't flown for over four years. We take our leave and head back to Save. The coastal route is chosen and we pass over some really spectacular scenery including a most impressive castle on an island, I take TMC down for close look.....!!! After about 45 mins we are back on the ground at Save as the sun slowly sinks in the west.

Sunday. Enjoy breakfast and decide to head over to Denmark. It has been a wonderful visit to Gothenburg and Save airfield with its unique museum. We head south following the coast keeping below Gothenburg's TMA before climbing and crossing the Baltic into Denmark. The crossing is some 60 miles over water, we pass over the island of Laesso, with its reassuring airfield far below. We knew there was an air show at Aalborg on Sunday and had planned to skirt well away as it was likely to be busy. Weather ahead was closing in, cloud base now down to 1200 ft with light drizzle and reduced forward visibility. I call Aalborg as they are the best bet for a divert, and they can fit us in but we have to circle for ten minutes awaiting our turn to land whilst Europe's last Star fighter jet does its stuff. By now weather is not good, Aalborg ask us if we can increase our approach speed. Aalborg is Denmark's second airport opened in 1938. Originally a military field but now used extensively for airline traffic. We land and see some of the air show activity on the far side of the field but are directed to the GA apron opposite the main terminal building. I look outside periodically willing the weather to improve and glimpse a Catalina flying boat flying low level in the rain and gloom. There appears to be some confusion as to when we can leave. After tea and coffee around three hours later we receive clearance and are able to depart at five o'clock. We taxi out and hold alongside a Mirage fighter. It commences its take off roll throwing up a massive cloud of spray from the soaked runway, raw engine thrust penetrating our cabin from such close proximity. Climbing away the plan is to make Wilhelmshaven later that evening.

Day 6 back to Texel. Then day 7 back to good old Blighty. On our way we transit over Belgium. Another landmark we pick out is the "Eperlecques Blockhouse". This massive concrete structure was built by the Germans to launch V1 & V2 weapons. On one side we could see an inert V1 sitting on a launch ramp pointing ominously towards London!

Mike Biddulph

BASE GARAGE LTD

MONDAY – FRIDAY 7.30 – 6.00

SATURDAY 8.00 – 12.00

- TYRES
- EXHAUSTS
- PUNCTURES
- BATTERIES
- WHEELBALANCING
- AIR CONDITIONING
- LATEST DIAGNOSTIC EQUIPMENT
- WELDING TO MOT STANDARD
- SERVICING & ALL REPAIRS TO ALL MAKES OF CARS
& LIGHT VANS FLEET DRIVERS WELCOME
- MOT CLASS 4, 5 & 7
- COURTESY CAR AVAILABLE
- COLLECTION & DELIVERY SERVICE 5 MILES RADIUS
OF GREAT BRICETT
- WINTER CHECKS
- HOLIDAY CHECKS

£10 OFF!

***YOUR MOT WITH THIS
ADVERT***

LOWER FARM ROAD, GT BRICETT, IPSWICH IP7 7DR

01473 658987 / 01473 657704

Bildeston Village Stores and Post Office

Tel: 01449 740248

Shop Open	Monday – Saturday	7.00am – 8.00pm
Post Office Open	Monday – Saturday	7.00am – 7.30pm
Shop Open	Sundays	9.00am – 5.00pm
Post Office Open	Sundays	9.00am – 12 noon

Village Stores

Monthly Londis promotions

Everyday provisions

Freshly baked bread and croissants

Fresh fruit and veg

Local ham, bacon and sausages

Bildeston Honey

Hot food and drinks to-go

Logs, coal and kindling

Cards, gift wrapping, stationery supplies

Newsagents and off-licence

Post Office (Open as above)

Postal services – Parcel Force

Cash deposits and withdrawals via chip and pin

(All main bank cards)

Postal orders

e top ups and bill payments

Foreign currency to order

Lottery

Studio 66

Ladies and Gents Hairdressers



Restyling

Foils & Highlights

Perms & Colours

Shampoo & Sets

Cut & Blow Dries

Friendly Service from our Professional Team

Tue & Wed Senior Citizens

*****special rates*****

Opening Times Tues - Friday 9 - 5 pm Sat - 8 - 1pm



Tel 01449 740644

52A High St Bideston IP7 7EA

Bildeston Ladies Club



At our September meeting we had a short wait for our speaker to arrive as he got lost on his way! It is fair to say that he then ambled through

the lanes and towns of Suffolk with many tales of strange happenings. We are probably all aware of the infamous Black Shuck stories from Blythburgh and Bungay, but who knew of the supposed poltergeist in Ipswich who liked to move peoples' shoes to the back door, or the grief stricken young girl of Southwold who, having lost her beloved in the 17th century, had fun with guests in a certain house (even in the 20th century) by lining up their belongings on the floor!



One of the most impressive stories related to a "ghost" house, looking to be a substantial structure of red brick, which has been witnessed by many separate individuals over the years on the road from Rougham to Bradfield.

An entertaining evening – take it all with a pinch of salt, or maybe there is something out there !!

On October 4th we will hear from local author Carolyn Belcher.

We meet at Chamberlin Hall – 7:30 for 8:00 p.m.

Members £2 Guests £3

Everyone welcome.

Chairlady - Jo Silburn – 01449 257045

Secretary - Jean Radley – 01449 743650

ST MARY MAGDALENE CHURCH CHRISTMAS FAIR

Our Christmas Fair this year will be held on

Saturday 17th November at Chamberlin Hall from 10.00am to 4.00pm.

Featuring a Grand Draw, Santa Claus in his grotto, delicious refreshments, cakes, jams and preserves, 'surprise' boxes, well-being items and much, much more.

Some stands for external vendors still available at £25/stand.

Enquiries re stands please apply to

Tina Leamon at tina.leamon@gmail.com or phone 07484 886058



COUSINS & SON BILDESTON LTD

available to carry out all your building requirements
from

Renovations / Alterations / Extensions to General Repairs

Please contact Paul for a free estimate

01473 658919 or 07876 244461

or email paul.cousins268@btinternet.com



Paul's Carpentry

All Carpentry projects considered large
or small

Decking, Fascia and Barge Boards, Fences, Pergolas,
Garden Rooms, Sheds.
and Much More

Mobile: 0779 234 0365

Tel: 01449 616888

email: paulhb100@protonmail.com



KINGS HEAD & Brewery

Nigel, Susie, Ryan, Freya and the Kings Head team look forward to welcoming you to the Bildeston Kings Head.

www.bildestonkingshead.co.uk

- Here's our **free live music** for **October**: every **Wednesday** is **Open Mic Night** from **8:30pm**; from **9pm** on **Saturday 20th** there's **When Rivers Meet**, Aron on guitar/vocals and Grace on vocals/fiddle/mandolin, deliver divine harmonised vocals to some great modern folk tunes; and from **1pm** on **Sunday 28th** have a relaxing lunch with **Kevin Nightingale**.
- Thursday is bar games night, there's all the usual plus **Poker, Skittles** and **table top football, snooker & tennis**. **Open Deck/Vinyl night** is **18th Oct**. **Charity quiz night** is **25th Oct** at 8:30pm, please arrive by 8pm. To book a quiz table telephone Sue/Nigel on 01449 741 434. A huge thank you to August's quiz teams who raised **£170** for **B Natural**.
- Our good value homemade food uses quality ingredients that are locally sourced where possible. We are well known for tasty beer-battered fish & chips, delicious boozy beef pie (Suffolk red poll beef) and our freshly prepared traditional Sunday roasts. Meals are cooked to order, available to eat-in or take-away and in child sized portions. To reserve a table please phone **Sue or Nigel on 01449 741434**.
- We brew our own real ales on-site (tours by arrangement) with at least one other from a local independent brewer.
- Our opening and food times are as follows:

Wednesday	Open 6pm-12am (open mic/buskin night)
Thursday	Open 6pm-11pm (bar games night)
Friday	Open 4pm-12am (full menu 5-9pm, T/Away 5pm)
Saturday	Open 12pm-12am (full menu 12-2pm & 6-9pm)
Sunday	Open 12pm-10:30pm (roast/Sunday menu 12-3pm)



Beauty by Megan

Megan is a beauty therapist with over 14 years experience.
I work from my log cabin in Hitcham, it is situated in a peaceful, rural
location and benefits from off-road parking.
Treatments are by appointment only. Therefore you are guaranteed
complete privacy and your treatment time is exclusively for you!

A variety of treatments include:

Dermalogica Facials/Reflexology/Spray Tanning
Jessica Manicure and Pedicure
Foot Health Maintenance (nail trimming/hard skin removal)
Eye Treatments/Waxing

Please phone for enquiries and price list.

Megan Pryke
VTCT, BABTAC
07876 717 008

BILDESTON EVENT MARKING WW1 CENTENARY

To mark the centenary of the end of World War 1 Bildeston is having an afternoon tea party on **Saturday 27th October from 2.00pm to 5.00pm at Chamberlin Hall**. It is open to anyone over 70 as this will be a good opportunity to get together and remember.

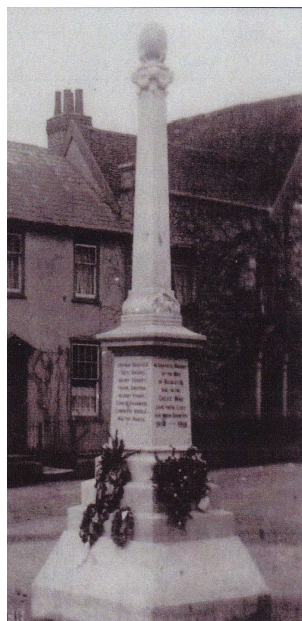
Spaces are limited to 100 people only, so hurry as tickets are selling fast and are not available on the day!

The cost is just £5 each for a full afternoon tea, music and a strip of raffle tickets. All profits to the Royal British Legion Poppy Appeal.

Please phone: **Chris Clarke on 01449 257059 or 07392**

419027 to book your seat. Tickets will then be delivered with payment to be made, please, on receipt of these. Extra raffle tickets will be on sale on the day at 50p a strip.

Tea will include music, a selection of 4 differently filled sandwiches, sausage roll, cheese straws, plain or fruit scones with jam and cream and a selection of home made cakes with tea, coffee and squash and extra surprises now in place!



BILDESTON HISTORY QUARTERLY

Issue 28 (Autumn 2018)

This special issue sees the one hundredth anniversary of the end of the Great War (1914-1918) and so remembers the men of Bildeston and of Wattisham, who were killed in action or died as a result of injuries sustained during their service. Bildeston has two war memorials, one in Market Place and the other in the parish church. When the parish church of Wattisham was closed in 1977, that village's war memorial was brought to Bildeston parish church for safekeeping. Brief biographies are given of all the fallen: their connection with their respective villages, their final resting places and other memorials on which their names appear. I would like to thank Michael Smith of Nedging for his assistance in this work. All profits will be donated to the Royal British Legion Poppy Appeal.

On sale now price £5 at

Bank House Stores in Bildeston,

Avis the Newsagent and Idler Bookshop in Hadleigh High Street,

at Hollow Trees Farm Shop in Semer

or from Sue Andrews, 17 Manor Road, Bildeston, Ipswich, Suffolk, IP7 7BG

price £6.50 to include postage (please make your cheque out to S. Andrews).

PAINTING SERVICES

Rob Harrison

Painting & Property Maintenance

Tel: 01449 741041

Mob: 07852 795469



Green Farm Vintage China

Hire

A large range of pretty vintage china and glass to hire for all occasions, including tea parties and weddings.

With every order 20% will be donated to the charity of your choice.

For more information, please contact

Carole Homer:

Tel: 01449 741498

Mobile: 07879265756



Email: carole.homer@btinternet.com

Dentist

Paul Rolfe BDS

Veneers & Crowns in a
single visit

Dental Implants

Family Dentistry

**Lavenham &
Long Melford**

01787 882722

www.paulrolfedental.co.uk

COLLINS & CURTIS
MASONRY LTD

est.1925

Memorial Stone Masons

*Dedicated craftsmen who
combine traditional with new techniques*

Bespoke memorials
Additional inscriptions
Restoration and cleaning
Home visits by appointment

01473 250932
www.collinsandcurtis.co.uk



**Antique
Renovations**

The Restoration experts



Lavenham Studios, Brent Eleigh Road, Lavenham
Tell: 01787 248511
www.antique-renovations.co.uk
email - antiquerenovations@live.co.uk



JBBOILER
SERVICE & REPAIR
OIL BOILER MAINTENANCE

07885 504036

jbboilerservices@hotmail.com

BARGEWELL SKIP HIRE

2 - 8 yard skips
1 ton waste bags
We also collect any full waste bags

Long or short term hire
Delivery 7 days a week
Fast & friendly service

Stowmarket 01449 615056

Mobile: 07770 452378

High Rd, Gt Finborough, Stowmarket, Suffolk
www.bargewellskiphire.com
Credit cards accepted

CHIMNEY SWEEP

ECO SWEEP CHIMNEY SERVICES

NEW POWER SWEEPING METHOD USED
FOR A MORE THOROUGH CHIMNEY CLEAN
THAN BRUSHES.

INDUSTRIAL HEPA FILTERED VACUUM.

FULLY INSURED.

INSURANCE RECOGNIZED CERTIFICATES ISSUED.

SPOTLESS, RELIABLE AND FRIENDLY SERVICE.

ALL CHIMNEYS, WOOD BURNERS, AGA, BOILER

FLUES SWEEP.

GUILD OF MASTER SWEEPS CERTIFICATED MEMBER.



TEL. 01359 232335

BILDESTON COMMUNITY CYCLING

Why not join our monthly Saturday morning Winter Warmer series?
These rides are for riders of all abilities.

WINTER WARMER 1

JOIN US FOR A RIDE OF ABOUT 25 MILES,
STARTING FROM THE MARKET PLACE
AT 9.30am, ON SATURDAY 13 OCTOBER.
CAFE STOP HALFWAY. BACK ABOUT 12.30pm.

PUT IT IN THE DIARY NOW!

Warm clothing recommended. The ride will be mainly on quiet lanes,
at an acceptable speed (no-one left behind!). Regret no
unaccompanied children under 16.

JUST TURN UP; or for more information, contact Robin Weaver 741048



Dan Brown

Your local professional Electrician

Web: www.saveelectrical.co.uk

Phone: 07731 67 27 57

Email: dan@saveelectrical.co.uk


**Over 15 years of experience to provide you with
a friendly, professional and competitive service**

Based in Rattlesden. All Aspects of Electrical Work Undertaken, including:
Installation, Repair and Maintenance, Test and Inspect, Home Theatres,
Smart Technology, Security

NIC Approved Installer, 17th Edition, Part P Qualified and Insured

SAVE Electrical can save you money on your
electricity bill. By Changing your 50w
downlights to Integrated LED downlights we can
save you up to £15 per year per light in energy
bills. Costing from £30 per light to supply and
install, you will have paid for it within 3 years... and done your bit to stay green.





A&L Roofing (suffolk) Ltd

Steven Allum
Jamie love

Specialising in Re-roofing, Repairs,
Flat roofing & all types of lead work

Contact. Jamie 07547594699
Steven 07545071147



The Grooming Lounge

A full grooming service
for your dog

Ipswich • Stowmarket • Bury St. Edmunds

Grooming Lounges located at:

Ipswich Veterinary Centre	Stowe Veterinary Centre	Moreton Hall Veterinary Centre
Tel: 01473 555 000	Tel: 01449 776 216	Tel: 01284 747 000

**SESAW
CHARITY SALE**

11-2pm Saturday 13th October at
The Community Hall, Timperleys,
Hintlesham

Collectables, glass, crafts,
jewellery, furnishings, books,
DVDs, pet stall etc.

Electricals, hobbies and sports in
our Man Cave!

Tombola, raffle,
refreshments and cakes.

50p entry.

All proceeds to Suffolk & Essex
Small Animal Welfare,
Reg.Charity No.1124029

Handy Carpenter

For those small jobs

Call Tom

0757 900 8271

A2arts

Autumn Art Exhibition

'Light and Shade' featuring

Margie Harris and Kate McGuire
&

Christmas Boutique Sale

Preview Evening Fri 19th October 6:30pm

OPEN WEEKENDS

20th & 21st October

and 3rd & 4th November : 24th & 25th November

OPEN 10 – 4pm

www.a2arts.net

Silwood Gallery, Consent Lane, Bildeston, IP7 7SB

DONE & DUSTED Cleaning Services

A professional, reliable business offering:

- Domestic Cleaning - regular cleaning or one off spring cleans
- Commercial office cleaning.
- Iron service - Collected and delivered back to your door.

Please call for a no obligation quotation:

**Office 01449 258574 /
Mobile 07402 045572**



B NATURAL Says Thank You

Well, B Natural 2018 happened!! And by all accounts folk think it was a success. We were blessed with pretty good weather over the weekend, great wide ranging music, and super food and drinks. Thanks to Chamberlin Hall Management Committee we had a great venue and were able to host the festival. For those of you who haven't heard why we moved to Chamberlin Hall, we made a massive blunder (we are only human) and didn't get our temporary event licence in time to hold it on The Square. So our biggest thank you goes to them.

However they are not the only ones we need to thank:

Volunteers make the festival happen, whether it is by cake making, selling raffle tickets or programmes, manning the bar and the tea gardens, helping set up or clear away, allowing your garden to be used for teas or general tidying, etc, the list goes on, thank you so much for the contribution you have made.

Some individuals are not on the committee but take on responsibility so thanks to Nicola Fenzl and Ray Radley

Local businesses also support us by donating raffle prizes or supplying goods, so thank you to: Bildeston Village Stores, The Boule-In, The Flower Shop at Kersey Mill, The Kings Head, Life Cycle, Nedging Autocentre, Secret Beauty, Stowmarket Regal Cinema, Studio66 and The Travelling Fryer.

Thank you to The Parish Council, Keep Bildeston Beautiful, Taylor Made Joinery and James Buckle who have supported us with grants or donations to run the festival:

The new inflatable cover for the stage was bought with grants from Kings Pightle Trust (Henry Morphew Legacy) and Councillor Robert Lindsey's Locality Budget, thank you to them.

**Last but by no means least thank you to all who supported the festival by rocking up listening to the music buying the beer, enjoying the tea and cakes and having a great time.
Thank you all very much from the B NATURAL committee.**

ANOTHER SUCCESSFUL PRODUCE SHOW

Saturday August 25th, St Mary Magdalene Church saw record numbers of entrants - 54 persons and also for exhibits - 289. The Cup Winners for accumulated points were:-

HANDICRAFT

*The Beryl Evans Memorial Cup - **Susan Kostyrka**

FRUIT AND VEGETABLES

*The Rev. John Cohen and Family Cup - **Norman Ruffell**

FLOWERS, POT PLANTS AND FLORAL ART

*The 2015 Bildeston Bugle Cup - **Nancy Dales**

BAKING

*The 2013 Bildeston Bugle Cup - **Christine Hubbard**

PHOTOGRAPHY

*The A3 Arts Cup - **Ray Radley**

ALLOTMENT PRODUCE BOX WINNER

*The Squirrell Family Trophy - **Ros Beswick**

PRESERVES AND JAMS

*The Barbara Williams Cup - **Chris Clarke**

Voted Best in Show by Committee & Stewards:

The Garden in a Seed Tray - **Alana Brooks**

The Committee would like to thank all those who donated prizes for the Raffle. The donations from previous Produce Shows enabled the Church to buy a large shed for storage. The picture below shows Nancy Dales officially opening it at this year's show. See you all next year!



ANDYS LOGS

Well Seasoned Barn Stored Hardwood Logs

Loads Delivered or Pick Up

Wood cut to size for any Heater

Large bags of wood collection only

CALL ANDY 07881 684687

**Bags of wheat for Chicken feed also available collection only*

J M GARDENING SERVICES

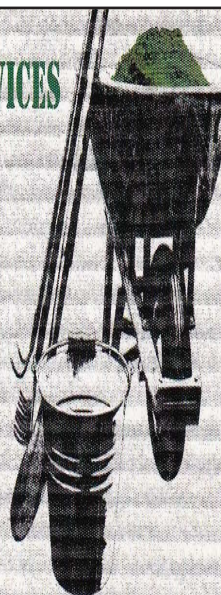
**FOR ALL GARDEN
MAINTENANCE**

NO JOB TOO SMALL

JOHN MORGAN

TEL:07855 855994

johnmorgan007@btinternet.com



Canine Wellbeing At The Pheasantry
Wattisham, Suffolk IP7 7LA

Dog and Puppy Day Creche

We provide a very special service of looking after your dog or puppy. In the comfort of our own home, whilst you are at work, or whilst your dog is recovering from veterinary treatment. Why not allow your puppy to socialise with other canine friends. Daily collection and delivery is available.

Dogs on Holiday

Whilst you are on holiday, why not let your canine friend have one too. She/he can come and stay in the comfort of our own home, where she/he will be treated as one of the family.

Also available

Canine Hydrotherapy

For more details phone:

01449 740659 mobile 07956286056

or visit our website: www.caninewellbeing.co.uk

LAXFIELD HOUSE NURSING HOME

BRENT ELEIGH, Nr LAVENHAM, SUDBURY, SUFFOLK

Situated in a quiet village location with beautiful gardens, offering residential and full nursing care for elderly people.

A highly trained team of nursing sisters and care staff provide excellent nursing care with kindness and compassion, ensuring privacy and dignity at all times.

** Long or short term respite care available **

A warm welcome is always extended to all visitors



All rooms are well appointed with en-suite facilities.
Nurse Call System, Passenger Lifts, Various Public Rooms

This nursing home was established over 25 years ago by the current proprietor and family with ongoing input and management.

**Enquiries to - Mrs J. Carne RGN, RM, (Matron)
Mrs E. P. Knight RGN, RM, Mr N. Knight (Proprietors)**

Telephone (01787) 247340 / 495

**enquiries@laxfieldhouse.co.uk
www.laxfieldhouse.co.uk**



Member of the Registered Nursing Home Association



Karen Finch RHAD FSHAA FRSA

How's your hearing?

**Take the first step towards better hearing and
book a hearing test with The Hearing Care Centre!**

Find us locally at:

The Health Centre, **Hadleigh**
The Country Practice, **Needham Market**
StowHealth, **Stowmarket**

- Hearing tests ■ Latest digital hearing aids ■ Outstanding aftercare
- Earwax removal ■ Custom made ear protection ■ Home visits

To book your appointment call 01473 230330

■ Award Winning ■ Family Run ■ Private ■ Independent ■ Local

hearingcarecentre.co.uk

Recipe of the Month

Beefburger, Toasted Brioche Bun

with thanks to Chris Lee Head Chef at The Bildeston Crown

Ingredients

- 1 medium sized onion peeled and diced
 - 1 tablespoon fresh chopped parsley
 - 500g lean beef mince
 - 1 egg
 - Pinch of salt
 - Pinch of pepper
 - 4 brioche buns
- Optional
- Slice tomatoes
 - Lettuce
 - Cheese slices
 - Bacon



Method

- Sweat off the diced onion in a pan of foaming butter till soft and no colour; when cooked drain on some kitchen roll and leave to cool.
- In a bowl add the mince, onion, egg, parsley, salt and pepper and mix until it all comes together, divide into four, roll into a ball and press down to form a burger shape.
- Place in frying pan till coloured both sides, place in the oven at 180°C until cooked through; add the cheese and place back in the oven till it has melted.
- Toast the brioche bun under the grill; add the salad and a sauce of your choice.



The Bildeston Crown's Chris Lee is in the running for the award for "Best Chef Regularly Cooking Game" in the 2018 Eat Game Awards. But to take home the prize, he needs your vote. The shortlist of the top 12 has already been determined but voting now begins again to determine the overall winner. So if you want Chris and Bildeston to win, vote for him online at eatgameawards.co.uk/voting/ before the end of September. "Chef" is the third category in the voting list and you do not need to vote in every award. Further details on The Bildeston Crown website.



PHYSIOTHERAPY AND PILATES NOW AVAILABLE



Claire is an experienced
Physiotherapist and certified
Pilates Instructor.

Services offered:

- Physiotherapy
- Womens Health Physiotherapy
- Running Analysis
- Pilates classes (BILDESTON & Hadleigh)
- Home visits

PHYSIOTHERAPY CAN HELP WITH:

- Muscular aches and pains
- Low back pain
- Hip and pelvic pain
- Neck pain
- Joint pain or sprains
- Repetitive strain injuries
- Nerve pain
- Ante and post natal pain
- Pre- surgery

Clinic Address:
A Touch of Beauty
8 George St, Hadleigh,
IP7 5BB.



www.fitframephysio.com

Tel: 07900440141

E: Claire@fitframephysio.com

Colette Moran
Integrative counsellor
Healing Time Counselling
07908554352
healingtimecounselling@gmail.com
Monks Eleigh Hadleigh, Bildeston
Long Melford, Sudbury

N D ROSE

Int / Ext Decorating

- Decorating
- Wall / Floor Tiling
- Gutters Cleaned /
Repaired / Replaced
- General Building
Maintenance

**Local established tradesman 25
years experience**

**Free estimates good rates
References available**

Tel: 01787 211042

Mob: 07518 040465

3 Fen Street Boxford CO10 5HL



01449 744966

info@clayhillcattery.co.uk

www.clayhillcattery.co.uk



LUXURY CAT HOTEL

5-Star family run cattery exclusively for cats

Secure, hygienic all year round boarding

Diets tailored to cat's needs and preferences

Indoor purpose-built luxury suites

Temperature controlled environment designed to be warm and cosy in winter and cool and ventilated in summer

Personal care and attention, a home-from-home for your cat

Recommended by vets

Free grooming, nail clipping and administration of medication

Ample Parking or try our collection and drop-off service

Fully licensed by Babergh District Council

24/7 on-site supervision and CCTV surveillance

Idyllic countryside setting surrounded by wildlife

Visits are encouraged prior to booking to discuss any specific requirements for your cat

Woodside, Clay Hill Lane, Wattisham, IP7 7JS



**Now Frying At Market Square
Bildeston**

Thursdays 4pm – 7.30pm

Fridays 11am – 1:30pm



**Local Mobile
Fish & Chip Shop**

**Functions Catered For
Shows • Parties
Weddings • etc.**

**Telephone
01473 830771**

BILDESTON ELECTRICAL

Rewires, Extensions, Board Changes or New Installations

Any Alterations to Existing Installations

(lights, sockets, etc.)

Contact Ian

01449 743664 or 07754 723685



BILDESTON HEALTH CENTRE FLU CLINICS 2018

These will be held at the Surgery **Saturday 6th October 2018** and **Saturday 20th October 2018**.

Thanks to all those who attending our NHS 70 tea party.

It was a great success. Also the surgery would like to thank Andrea King and her Upbeat Contemporary Choir for the concert in aid of Friends of Bildeston

Surgery, the grand total of £1123 was raised- a fantastic achievement thank you!

FOBS AGM - the date of the FOBS (Friends of Bildeston Surgery) Annual General Meeting is **Thursday 15th November at 6.30pm**. All welcome to attend. FOBs are also looking for new members to join their group so anyone interested please contact the surgery for more information.

Friends of Bildeston Surgery

CHRISTMAS QUIZ - NIGHT

At

Hitcham Village Hall

on

Saturday 8th December 2018

7pm for 7.30pm start

- - - -

£3 per person including nibbles - teams of 6 members.

(Pre-booked tables only)

To book call: Muriel (01473) 827432

- Raffle & Bar -



BILDESTON PARISH COUNCIL

DRAFT minutes of the meeting of Bildeston Parish Council

held on Wednesday 12th September, 2018 in Chamberlin Hall at 7.30pm

In attendance:

Councillors: R Taylor (Chairman)

P Bullen, D Dempsey, A Guttridge, A Hubbard, P Hutchings and R Lester

Also Present: District Councillor M Creffield

Three local residents representing The Bugle and Keep Bildeston Beautiful

D Blackburn

The Chairman, Councillor R Taylor, welcomed everyone to the meeting.



C48/18/19 APOLOGIES FOR ABSENCE

Apologies for absence were received from Councillor Dempsey County Councillor Lindsay.

C49/18/19 DECLARATIONS OF PECUNIARY AND NON-PECUNIARY INTERESTS

The following declarations of non-pecuniary interest were made:

Chamberlin Hall Management Committee – Councillor P Hutchings

Kings Pightle Management Committee – Councillors Hubbard, Lester & Taylor;

Sportsfield Management Committee – Councillors Dempsey, Lester & Taylor; and

Parochial Church Council – Councillor Lester

Councillor Hubbard declared an interest and left the meeting (Minute C51/18/19 refers) as his wife was Treasurer of The Bugle and that body was seeking a grant from the Parish Council.

C50/18/19 MINUTES OF PREVIOUS MEETING

It was AGREED: That the minutes of the meeting held on 12th July, 2018 be signed by the Chairman as a correct record.

C51/18/19 PROPOSAL TO PURCHASE A MULTI_FUNCTIONAL DEVICE (MFD) WITH COPYING FACILITIES

Mr Alan Jacobs submitted a proposal, on behalf of The Bugle, to purchase a multi-functional copier with a range of document finishing features. It would be used principally, for the production of The Bugle but also would be available for use by other groups within the village. Councillor Hutchings confirmed that the Chamberlin Hall Management Committee had agreed that the copier could be kept at Chamberlin Hall. Current arrangements for printing The Bugle using an old stencil copier were due to cease in December 2018, meaning that alternative arrangements were necessary to safeguard the future of The Bugle.

There was a wide-ranging discussion about the cost, potential sources of grant funding, whether to purchase outright or lease the equipment, its availability for use by community groups rather than individual persons and the quality of the documents that could be produced.

It was AGREED: That the Parish Council supports the proposal to purchase the copier in principle, subject to further information being submitted to the next meeting, particularly in respect of the availability of grant funding and the financial contribution sought from the Parish Council.

C52/18/19 PROPOSAL FOR MILL LANE “SPRUCE UP” PROJECT

Mr John Beales submitted a proposal, on behalf of Keep Bildeston Beautiful, to make improvements along Mill Lane. He cited the fact that the river was “choked” with debris and the path had many brambles across it. The views of the Suffolk Wildlife Trust had been obtained and they had advised that the project would be best be undertaken from October onwards. The objective of the project was to improve the local environment and make using the area a more pleasant experience for local people.

Matters considered at the meeting included the hire and siting of a skip, insurance cover for volunteers, the preparation of a risk assessment for the project and the supply of personal protective equipment.

It was AGREED: That the proposal be supported in principle, subject to further details being submitted.

ted to the next (or a future) meeting.

C53/18/19 DISTRICT COUNCILLOR'S REPORT

District Councillor Creffield reported on a range of issues including:

- The outcome of the Local Government Boundary Review of Babergh District, as a result of which, Bildeston would form part of the North West Cosford Ward, along with the villages of Hit-cham, Brettenham, Kettlebaston, Preston St Mary and Thorpe Morieux. A full copy of the report and an interactive map were available via www.lgbce.org.uk; The new arrangements would come into force at the District and Parish Council elections in May 2019.
- The identification of a 5-year land supply in Babergh District for development which, theoretically, would put the Planning Authority in a stronger position to refuse permission in respect of speculative planning applications.

C54/18/19 COUNTY COUNCILLOR'S REPORT

County Councillor Lindsay had submitted a written report and the matters within it that were discussed at the meeting were:

- An assurance given by the County Council that verge cutting would be completed by Friday, 14th September in and around Bildeston, following the slippage of these works which were originally due to be undertaken in July.
- A new policy had been introduced by the County Council that it would not be supplying grit heaps in the winter owing to the damage that they could cause to hedges and other vegetation. It was also suggested that exposure to the elements in piles made the grit less effective in treating ice. Grit bins would be replenished. Bins had to be purchased by Parish Councils and had to be yellow in colour unless they were in a conservation area.

It was AGREED: That an extra grit bin be purchased for siting at the top of Church Hill.

C55/18/19 VILLAGE TRAFFIC SPEED AND SAFETY ISSUES

Further to the publication of an article in The Bugle in accordance with Minute No.C38/18/19, there had been no support received to the proposal by a local parishioner to have a "Children Playing" sign erected at the junction of Rotheram Road and Artiss Close. Therefore, it would not be pursued. However, an enquiry had been received from a local resident regarding the possible introduction of a 20mph speed limit. This prompted a wide-ranging discussion about the County Council's position in not authorising sites in the village for use of speed monitoring equipment, the possibility of introducing a 20mph speed limit across the whole of the village and the transitions between the national speed limit and 30mph speed limit on the roads entering Bildeston. A local resident had raised their concerns about vehicles going the wrong way around Brooksfeld. Councillor Hubbard has been asked to examine the quality of road markings in the village and based upon the photographs presented at the meeting, the consensus was that priorities for re-lining were:

- The junction at the bottom of Wattisham Road with High Street
- The junction of Duke Street with High Street
- The junction of Ipswich Road with High Street
- The junction of Brooksfeld with Wattisham Road including the "No Entry" sign on the road.
- The east side of High Street near the Market Square

It was AGREED: That the Parish Council would seek the views of County Councillor Lindsay on the prospects for further traffic calming/management measures, in and around the village, and seeking his support for new white lining of the roads.

A local resident had again raised his concerns following a further recent collision by a lorry with his property. It had been agreed previously that the County Council be urged to provide a bollard at the road junction outside the property and that County Councillor Lindsay should be asked to meet with the resident to discuss the situation and seek the introduction of appropriate safety measures.

C56/18/19 REMEMBRANCE

Members of the Parish Council considered arrangements for the centenary of the commemoration of the ending of the First World War. The following updates were provided:

- Councillor Lester submitted a list of varied and interesting proposals from a representative of the Parish Church
- Councillor Hutchings reported upon an event being held at Chamberlin Hall in late October, with a tea party for veterans, display of memorabilia etc. along with a series of film clips that he was preparing
- Councillor Hubbard reported that the War Memorials Trust had advised not to clean the War Memorial
- Councillor Bullen reported that he was seeking confirmation that servicemen from Wattisham would parade in the village on Remembrance Sunday and had been in contact with Lieutenant Colonel Robbie Silk about this matter
- The Clerk reported that the Parish Council normally purchased a wreath and make a donation of £100 to the Royal British Legion

The consensus was that a coordinated programme of activities should be held in the village to mark Remembrance.

It was AGREED:

- a. That an article be prepared and placed in The Bugle by Councillor Lester in respect of Remembrance activities and events in the village;
- b. That steps be taken to liaise with representatives of Chamberlin Hall and the Baptist Hall with a view to transferring the display assembled for the Chamberlin Hall tea party to the Baptist Church Hall for Remembrance Sunday;
- c. That Councillor Hubbard liaises with Sue Andrews over memorabilia that might be obtained to contribute to the display;
- d. That the position with regard to the War Memorial be noted and the surrounding area be cleared of weeds and swept before Remembrance Sunday; and
- e. That a wreath be purchased and a donation of £100 be given to the Royal British Legion.

C57/18/19 UPDATE ON VILLAGE AMENITIES (UNDER THE MANAGEMENT OF OTHER BODIES)

The Annual General Meeting of the Kings Pightle Trust would be held at the Sportsfield Pavilion on Thursday, 13th September, 2018 at 8.00pm. Councillor Lester presented a copy of the papers for the meeting to the Clerk. Details would be reported to the AGM of the investment of funds from the Henry Morphew estate.

Councillor Hutchings reported on the collaborative effort that went into holding BNatural. There had been positive feedback from attendees. The Chairman commended Chamberlin Hall Management Committee on the way that they had stepped in to ensure that the event went ahead and was so successful.

C58/18/19 PARISH COUNCIL AMENITIES

Councillor Hubbard reported that the clock had been repaired and was in good working order. The services of a surveyor were required to determine what repairs should be undertaken to the clock tower and Councillor Guttridge would pursue this.

C59/18/19 CLERK'S REPORT

The Clerk submitted an Action Plan on matters that were being dealt with by the Parish Council and their current status. This would be kept up to date and submitted to meetings, generally on a quarterly basis depending upon the amount of business on each agenda.

C60/18/19 AUTHORISATION OF PAYMENTS

It was AGREED: That the following payments be authorised:

Payee	Description	Budget Category	Amount (incl. VAT)
David Blackburn	Clerk's Pay*	Salaries & Expenses	£166.49
David Blackburn	Expenses*	Salaries & Expenses	£18.00

David Blackburn	Clerk's Pay	Salaries & Expenses	£166.49
David Blackburn	Expenses	Salaries & Expenses	£18.00
Adrian Chinery	Grounds Maintenance*	Salaries & Expenses	£366.22
Adrian Chinery	Expenses	Salaries & Expenses	£44.00
Adrian Chinery	Grounds Maintenance*	Salaries & Expenses	£514.69
Adrian Chinery	Expenses	Salaries & Expenses	£102.00
Robin Taylor	Payment made on behalf of Parish Council to ICT Domain supplier	ICT & Website	£39.47
Robin Taylor	Payment made on behalf of Parish Council to SMS Sharepoint supplier	ICT & Website	£215.71
Command Pest Control	Mole Treatment	Playgrounds & Open Spaces	£90.00
Command Pest Control	Wasp Nest	Playgrounds & Open Spaces	£48.00
Haward Horological Ltd	Clock Service	Clock Tower Maintenance	£350.00
BNatural	Grants	Community Grants	£750.00
JRB Enterprises	Dog Bin Bags	Playgrounds & Open Spaces	£195.54

* Indicates retrospective approvals of payments made during August holiday period.

Following the payment of a grant to BNatural, it was agreed that the Grants Reserve be replenished with the transfer of £1000 from the General Fund.

C61/18/19 PLANNING APPLICATIONS

Planning Appendix A: Planning Applications Consultation

Reference	DC/18/03719
Proposal	Householder Planning Application - Erection of a two-storey side extension
Location	44 Rotheram Road, Bildeston, Ipswich, Suffolk IP7 7TQ
Representation to Planning Authority	No objection

Planning Appendix B: Planning Applications Decisions by Babergh District Council

Reference	B/15/01628
Proposal	Discharge of Conditions for Application - Condition 3 (Fenestration)
Location	Bildeston Baptist Church, Duke Street, Bildeston, Ipswich Suffolk IP7 7EW
Decision	Granted

There were no matters raised.

C63/18/19MATTERS TO BE BROUGHT TO THE ATTENTION OF THE COUNCIL

Councillor Hubbard reported that work on providing a secure fixing for the Christmas tree in the Market Place had almost been completed.

Councillor Hutchings undertook to liaise with members of the Chamberlin Hall Management Committee regarding whether it would like to receive the spare noticeboard obtained by the Parish Council when the bus timetable noticeboard was replaced recently, on the Clock Tower.

Councillor Lester reported that the Sportsfield Management Committee had received an invoice from Vertas for grass cutting when, it was understood, that the contract had been cancelled. The invoice would be forwarded to the Clerk so that he could liaise with Vertas over the matter.

There was a brief discussion about grass cutting arrangements and the Clerk undertook to place an item on the agenda for a future meeting after the end of the grass cutting season, so that the current service could be reviewed.

The meeting closed at 9.37pm.

OVER 60'S CHRISTMAS LUNCH

Chamberlin Hall
Management Committee
Invite you to the
Over 60's Christmas Lunch
At Chamberlin Hall
On Saturday 15th December
12 noon for 12.30pm



Please fill in the form below and return to
Jayne Harrison 130 High Street
Or Bank House Stores
By 30th November

Name: _____

Address: _____

If you need a lift please tick the box

☐

BILDESTON RANGERS WINTER BALL

Saturday 3rd November 2018
Copdock Hotel, London Road,
Copdock, Ipswich IP8 3JD



7.30pm Sparkling
Reception
8pm Dinner
9.30pm Auction

And then onto an evening of dancing.

Dress Code – Strictly Ball
For tickets and information call 07725693929
or email rhbrfc@gmail.com
NO tickets available on door

FIREWOOD

DRY SEASONED LOGS

Various loads available

Also available is Kiln Dried Hardwood Nets



Call Carol Abbott on 01473 829130
or 07768 795981

Tree, Garden Work and Driveways also
Undertaken



D J Dunstone Optometry

3 Queen Street, Hadleigh

For your entire eye care needs,
including contact lenses, latest Swept
Source OCT eye scanner, examination of
children and home visits

Frames include: Polo Ralph Lauren, Ray-
Ban, Elle, Paul & Joe and Esprit



To find out more please call in, telephone 01473 823755
or see dunstoneinsight.com



WINDOW CLEANERS.

Providing a friendly, reliable and efficient service since 1995.

Andy: 01449 722680. Paul: 01473 604714.

Mobile: 07711 381919.

FULLY INSURED.

**With over 50 years of Traditional Window Cleaning experience,
we're at the top of our Profession!**

- ❖ Home Maintenance
- ❖ Carpentry
- ❖ General Building Work
- ❖ Brickwork & Blockwork
- ❖ Stonework
- ❖ Hand Built Sheds
- ❖ Floor & Wall Tiling
- ❖ Paving & Patios
- ❖ Kitchens & Wardrobes
- ❖ Pergolas
- ❖ Carpentry
- ❖ Bespoke Fencing
- ❖ Property Maintenance
- ❖ Repairs
- ❖ Advice & Planning
- ❖ Shop & Office Fitting
- ❖ Renovation Work



Bildeston - Suffolk.

For a prompt & reliable service.



01449 740275 or 07580 753020
Email: bobbuckle10@gmail.com

RESEARCH MY ROOTS

Let me build your family tree

**If you are looking to trace long lost relatives,
 search for a biological parent or just wish to find
 out who your ancestors were, please get in touch.**

www.researchmyroots.com

ali@researchmyroots.com | Tel : 07704 712643

My name is Ali MacDonald and I have a passion for Genealogy. I have a diploma in Genealogy and many years experience in research. If you are looking to trace long lost relatives, search for a biological parent or just wish to find out who your ancestors were, please get in touch. My prices are very competitive and I live in STOWMARKET.

Thanks for reading this and I hope to hear from you!

Please visit my website for more details:

Friendly Experienced
Teacher offers
Individual

MATHS Tuition

Speciality
Confidence Building

KS1 – KS3

Call Colin Plummer on
01449 736918
for details and availability
or email:
colinp52@btinternet.com

Angel Delights

**Outside Caterer &
Specialised Confectioner**

*We cater for all occasions including;
Weddings, Funerals, Christenings,
Birthday Parties,
Canape and Dinner parties,
Corporate events and Barbecues*

CAKES FOR ALL OCCASIONS

Contact Helen
01473 806398
info@angel-delights.com
www.angel-delights.com

Stuart Walker

Decorating, Painting & Refurbishments



A locally based company offering an honest and reliable service

Painting - Decorating - Refurbishments - Repairs

All work considered indoors & out! Fully Insured & free quotations provided

Please contact Stuart on Tel: 07711 606464 or 01449 740387

Email: stuma1@hotmail.co.uk

Constable Country Property Maintenance

General Maintenance, Carpentry, and kitchen fitting.

Lee Caley

8 Blenheim Meadows
Nedging Tye, IP7 7GA

07944 246644

leecaley.lc@gmail.com



GIDNEY PLUMBING & HEATING

Tap Changes, Ball Valves, Shower Pumps,
Water Softeners, Hot Water Cylinders,
Bathroom, Wet room & Kitchen Installs,
Radiator & Valve Replacements,
Underfloor Heating, Heating System Repairs,
Renovation & New Builds.

24 Hour Emergency Cover
Professional & Reliable Service

07534525263
01449 258254

gidneyph@outlook.com
www.plumbinginsuffolk.com

****Pilates and Yoga classes now at Kersey Mill****

If you want to exercise both your body and mind as well as improving your sense of well-being, strength, flexibility and mobility then Pilates is for you! We are passionate about bringing the benefits of Pilates/Yoga to everyone and with a highly qualified team of instructors we can certainly help you improve muscle tone and core stability, building strength from the inside out, re-balancing the body and bringing it into correct alignment.

BEGINNERS CLASSES AND FREE TASTER SESSIONS* ARE NOW AVAILABLE AS WELL AS PRIVATE 1:1's

** on selected classes*

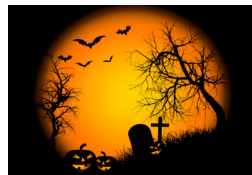
We now offer small Yoga classes too to add to your well-being experience at Kersey Mill. Please get in touch if you would like any more information.

Whether you are new to Pilates/Yoga or have been enjoying the benefits for years, we feel confident that we can accommodate your needs to achieve results.





D'ENZA



HAIR @ BEAUTY SALON at
"KERSEY MILL"

"October Offers"

1: Elemis 1 hr Specific facial with a back, neck & shoulder massage

Special Price of only £45

2: Hopi Ear Candling Treatment with a back, neck & shoulder massage

Special Price of only £40

3: Reflexology & Sports Massage available on certain days-

Special Price of only - 30mins £35 - 45mins £45

4: The new Zone Face Lift~ a natural & kinder anti-ageing facial treatment as effective as Botox. (12-week course offered by Gaynor)

Amy, Hayley & Sarah are taking bookings for hair - Please call 07547488587.

The above offers cannot be used with another offer.

Please telephone for more information or make a booking on: **01473 829069**

Email: emmaspraggons@yahoo.co.uk or visit us on Facebook or Twitter for our special offers.

For opening times & brochure please look at our website: www.denzahairandbeauty.com



Unit 1 Church View Kersey Mill, Kersey, Ipswich, Suffolk. IP7 6DP.

THE FLOWER SHOP

Your local independent florist

Creating beautiful
arrangements for
all occasions using
only the freshest,
seasonal flowers

Visit us in store
to view our flowers,
plants and
homeware items,
or order by phone
or online

Local and nationwide
deliveries

• ESTABLISHED 2013 •

www.theflowershopkm.com THE FLOWER SHOP AT KERSEY MILL Near Hadleigh IP7 6DP 01473 805156

Andrew Bingham

INDEPENDENT FUNERAL SERVICE

Caring, family run funeral service

*Small enough to care,
Large enough to cope.*

www.andrewbingham.co.uk

Award winning 24 hour personal service - qualified & experienced



Bereaved Young

Golden Charter
Funeral Plans



Friends in Bereavement
Support Group

01449 771666

The Nutshell, Milton Road South,
Stowmarket, Suffolk IP14 1EZ



BILDESTON w WATTISHAM, WHATFIELD w SEMER, NEDGING & NAUGHTON SERVICE SCHEDULE – OCTOBER 2018

October 2018		NB – Services in bold are Benefice Services	
7 th October	11 am	Harvest Festival	Bildeston
14 th October	11 am	Holy Communion	Bildeston
28th October	11 am	Benefice Holy Communion	Semer
4 th November	11am	All Souls	Bildeston

ST MARY MAGDALENE CHURCH

The Churchwardens and PCC are always appreciative of all the support we have for the Church. If you have a couple of hours to spare each month would you like to volunteer to join the roster for church cleaning. All of the village should be aware that there is a food bank, mainly tinned goods, in the church. We encourage contributions and also invite people to take items if you have a need. The cupboard is to the right of the kitchen area and not locked. However, please ensure the doors are closed and do not place any fresh food in the cupboard. Thank You,

Martin Rodgers Churchwarden 743120 mam.rodgers@btinternet.com

While we await a new priest, please contact the area church office at Hadleigh
(**email: office@stmaryhadleigh.co.uk or phone 07704 778325**)
regarding baptisms, weddings etc. or the church wardens -
Neil Ashwell (01449 741370 email neilashwell@aol.com) or

Baptist Church, Duke Street, Bildeston

Jim Haley tel: 01449 740716 email: bildestonbc@gmail.com

Service every Sunday morning at 10:45

Lunch Club: at 12:30 on the first Wednesday of each month –

All are most welcome

Community Coffee Centre: Every Friday from 09:15 to 11:30am

Enjoy meeting old and new friends at these events!

‘Craft it Together’ - First Monday of each month at 7:00pm.

Bring along your craft activities and join us for an informal, relaxed evening share ideas, gain new skills or just enjoy doing your own thing

Drinks provided.

Please contact Elaine on **01449 740716 or 01449 741606** for more information

Strollers and Striders

Every Monday 10.00am from the car park

‘Men’s Breakfast’ - last Saturday of each month at 8am



Bildeston Community Coffee Centre

Baptist Church 9:15-11:30..... **Every Friday**

Lunch club

Baptist Church 12.15 for 12.30pm start.....**1st Wed every month**

Craft it Together

01449 740716/741606 for details.....**1st Monday every month**

Strollers & Striders

Baptist Church Car Park 10.00.....**Every Monday**

Baby and Toddler Group

Baptist Church 9.15 to 11.30am.....**Every Tuesday**

Mens Breakfast

Baptist Church 8.00am.....**Last Saturday every month**

Bildeston Indoor Market

Chamberlin Hall 9.30am - 2.30pm.....**Sat 1st**

Ladies Club

Chamberlin Hall 7.30.....**Thurs 4th**

Flu Jab 2018

Bildeston Health Centre am.....**Sat 6th & 20th**

Parish Council Meeting

Chamberlin Hall 7.30pm.....**Wed 10th**

Winter Warmer 1 Cycle Ride

Market Square 9.30am.....**Sat 13th**

Indoor Market

Chamberlin Hall 9.30 am to 2.30pm.....**Sat 13th**

Remembrance WW1 Tea Party

Chamberlin Hall 2.00pm to 5.00pm.....**Sat 27th**

Please tell us about your forthcoming events in **November**

email: editor@bildestonbugle.co.uk



When you're finished with this Bugle please pass it on or recycle it.