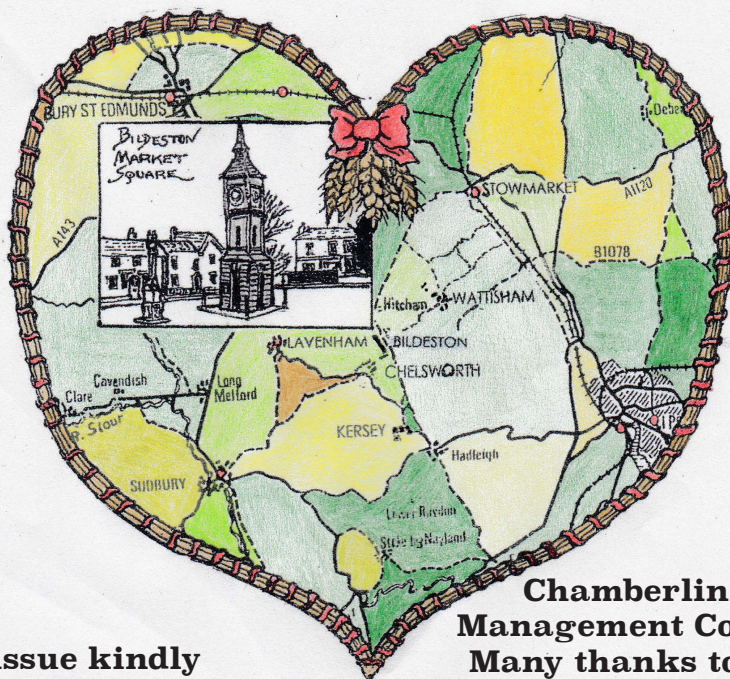


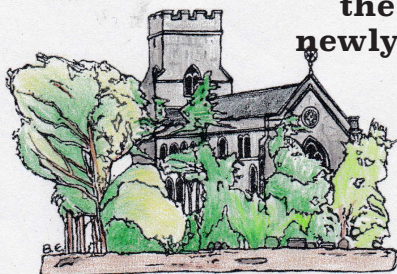
Issue number 333

**July 2018**



**This issue kindly  
sponsored by -**

**Chamberlin Hall  
Management Committee  
Many thanks to all our  
volunteers and everyone  
else for their support during  
the first year of the  
newly formed committee**



Saint Mary's Church, Bildeston, Suffolk.

**The village magazine produced for the people of Bildeston**



## BILDESTON BUGLE ADVERTISING AND FREE CONTRIBUTION INFORMATION

Our aim is to provide every resident and organisation in Bildeston with a magazine which provides information of local interest FREE OF CHARGE. To that end we are required to be efficient in the space we use to print free notices. We endeavour to include interesting items, announcements for events open to the general public for free and items of a charitable nature free of charge. Ongoing free announcements need to be reduced to minimum size or make a contribution towards printing costs. Please check with us before submitting your advert and ALWAYS provide us with all of your contact details in order for us to send an invoice and receipt.

email: [editor@bildestonbugle.co.uk](mailto:editor@bildestonbugle.co.uk)

*Sponsor a 'Bugle' – £15 per issue*

and have a brief message of your choice printed on the front of the Bugle

### *Advertising Rates*

	1 issue	12 issues (30% disc)	
1/4 page	£3.00	£26.00	65mm W x 92mm H
1/2 page	£6.00	£50.00	134mm W x 92mm H
Full page	£12.00	£100.00	134mm W x 190mm H

#### THE SMALL PRINT

All adverts, payments and items are required before the 17<sup>th</sup> of the month for inclusion in the following month's issue (except December).

The earlier free contributions are received the greater the chance of inclusion.

Please make cheques payable to Bildeston Bugle and send to:

The Editor, Bildeston Bugle, 14 Squirrells Mill Rd, Bildeston IP7 7DY

Receipts cannot be issued without your full postal address.

If we do not receive payment by the 17<sup>th</sup> of the month your advertisement may NOT be included

### **The Bildeston Bugle Management Team is:**

Alan Jacobs (Editor) 01449 741645

Tricia Baldwin (Marketing & Advertising Revenue)

Christine Hubbard (Treasurer) 01449 740633

Stuart Law (Assistant Editor)

Alison Sims (Assistant Editor)

# ED'S COMMENT

Just when a parishioner, at the Annual Parish Meeting, raised the issue of the growing level of crime in rural communities and the apparent absence of community policing, a consideration was announced by the National Police Chiefs' Council to routinely arm front-line officers in remote, rural communities. The Police Chiefs say this is a response to a lack of specialist counter-terrorist firearms officers, so these officers, in remote, rural communities, could be routinely fully armed in order to deal with terror threats.

Wonder if our parishioner is now thinking, "Wow, I only wanted to see if we could get a local bobby back!" How worrying is the thought of highly trained, Kevlar armoured, black balaclava clad officers from Counter Terrorism patrolling Bildeston High Street, sitting in the square having breakfast from the Village Stores. Close by, propped against the clock tower are their Glock 17 pistols and Heckler & Koch MP5 rifles (whatever they are!!)

That might stop the speeding through the village and poor parking. It might even scare the dogs fouling the footpaths!!

A serious worry for the Police chiefs is that, despite over the past two years the Home Office funding an extra 874 armed officers in England and Wales bringing the total to more than 6,400 in April 2017, recruitment was short by about 100. Police chiefs have estimated that in rural communities a firearms unit could be between 30 to 70 miles away in the event of a major incident. How many of us have realised the extent to which numbers of armed police have crept up and up, despite the fact that we cling to the notion the UK police are an unarmed force? Was this suggestion really put out there to address the issue of the lack of rural policing by using special counter-terrorism officers? Probably not, because it was made just one week before the Police Federation Conference at which the newly appointed Home Secretary was due to speak and, surprise, surprise he announced extra resources for the police. The Police Chiefs knew full well playing the counter terrorism card, publicly, at this time might be successful.

How interesting, though, to link it with the issue of rural policing. Our parishioner raised a crucial point. What has happened to rural policing over the last 10 years? Despite the apparent rise of rural crime, attacks against isolated ATMs, distraction doorstep burglaries and robberies of farm machinery and livestock, police presence in the countryside has fallen. The Institute for Fiscal Studies published its report in 2017: *Police workforce and Funding in England and Wales*. They report that the number of full-time-equivalent police officers in England and Wales fell by 14%, or almost 20,000 officers, between 2009 and 2016. This has undone the workforce expansion of the 2000s – there are now fewer police officers in England and Wales than there were in the late 1990s.

Since we lost our much missed PC Ruth Finbow, replaced by a PCSO who was hardly noticeable, no reports have been received for the Parish Council as they were before.

The Suffolk Police and Crime Commissioner, Tim Passmore, published the Suffolk Rural Policing Strategy 2017-2020. It's a worthy document, long on aspiration and assertion, but short on detail. For instance, how they might increase their presence, increase recruitment of, significantly, 'Special Constables' and 'volunteers', rather than police officers with the full range of powers. The Parish Council decided to ask our Clerk to write an open letter, published in this month's Bugle, to Suffolk's Police and Crime Commissioner, expressing concerns and seeking the very reassurance the Suffolk Strategy claims the force will provide. Hopefully the Bugle will publish his response. Meanwhile, the image of counter terrorism police patrolling rural communities might not be so fanciful after all!



# HONEY BEE'S NURSERY

Hitcham Village Hall, Hitcham, IP7 7NE

**FOR CHILDREN AGED 2 – 5 YEARS**

Open Mon, Wed, Fri 9.15a.m. – 12.15p.m. or 3.15p.m.

Tues, Thurs 9.15a.m. – 12.15p.m.

Early Drop Off – 8.15a.m. Lunch Club Daily until 1.15p.m.

**2 Indoor Rooms and Outdoor Areas**

**Ofsted Registered**

**Early Years Funding accepted for all 3 & 4 year olds  
and eligible 2 year olds. 30 hrs funding also  
available.**

Contact: Sharon Scarfe 01449 740764 (hall) 01449 740581 (home)

Or visit **[honeybeesnursery.co.uk](http://honeybeesnursery.co.uk)**

**WANT TO LEARN TO PLAY  
GUITAR, BASS, DRUMS?**

***MANY CONTEMPORARY STYLES COVERED, INCLUDING  
ROCK, METAL, POP, INDIE, BLUES, FUNK AND MORE.***

KEYBOARDS, VOCALS, SONG AND LYRIC COMPOSITION

MOBILE DIGITAL RECORDING SERVICE AVAILABLE



**ADAM KEETON**

GOOD COMPETITIVE RATES

01449 744530 OR 07914 798374

FULL DBS + LOCAL YOUTH GROUP LEADER





# Bildeston Primary School

## African Adventure Residential Trip

We took our year 5/6 pupils to stay at African Adventure at Sizewell Hall, on the Suffolk coast from Monday 21 May 2018 to Friday 25 May 2018, the week after SATs for our year 6 pupils.

The centre offered a "purposeful programme, applicable to the current curriculum". Activities included bridge building, low ropes, archery, shelter building and scavenger hunting on the beach. The children were also encouraged to use their thinking skills for teamwork, social and cultural activities themed around an African village. The weather was very kind to them the whole week and they all came back with wonderful stories of their week away.



## Recycling Workshops in School

We were lucky to be able to have Sharon Lockhart with us for the day on Wednesday 6 June 2018. Sharon is the Information and Education Manager at FCC Environment in Ipswich. Sharon worked with all of our classes explaining what happens to our waste and how we can help our environment by recycling more!

## Enrichment Environmental Day

Miss Myers, our Reception class teacher, held an Enrichment Environment Day at our school for children from across our pyramid of schools. The children enjoyed their morning in the outdoors making clay models, identifying different leaves and making hats from foliage that they collected.

## Able Maths Day

Two of our pupils were fortunate enough to be able to attend an able maths day at Chilton Community Primary School on Friday 8 June 2018. Pete Hall, an ex-Primary Head Teacher who has been involved in many primary maths projects nationally and internationally, ran the event. His motto is 'Making Maths fun!'

## Father Day Lunches

Our Father's day lunches were held on Wednesday 13<sup>th</sup> and Thursday 14<sup>th</sup> June and were once again very successful. Over 180 meals were served across the two days and we would like to say a special thank you to our hard working kitchen staff and to our parents who always help to support these special lunches.



**If you are considering Bildeston Primary as a school for your child, we would welcome a visit. Please phone the office on the number below or email us. We would love to meet you.**

**Bildeston Primary School**  
Newberry Road, Bildeston, Ipswich, Suffolk, IP7 7ES  
Telephone: 01449 740269  
Website: [www.bildeston.suffolk.sch.uk](http://www.bildeston.suffolk.sch.uk)



# CHAMBERLIN HALL

## ANNUAL GENERAL MEETING 2018

On the 14th June Chamberlin Hall hosted its AGM. The hall is managed as a trust and was established to administer the generous legacy left by Kate Chamberlin. The primary purpose of the meeting each year is to elect Trustees for an annual term, it's also a chance to update the community on the years activities and financial outcome. It was hosted this year by Peter Hutchings the current Chairman and accompanied by Kevin Bailey (Treasurer) and Jo Silburn (Secretary). The other Trustees present were, Jayne Harrison, Kevin Harrison, Neil Wimpress, Jean Wimpress, Debbie Bailey, Fiona Lemon, Tracey Rose, George Miller, Ray Radley (on holiday). Peter opened the meeting by thanking the people for attending and taking the time and showing their support, it was well attend and is much appreciated. The year started with a new management committee and the formation of thirty plus volunteers known as Supporters of Chamberlin Hall (SOCH). Peter said there were three objectives for the management team firstly, to improve the financial performance to secure the hall's future, secondly, to establish a business model that imposes a professional and legal structure to the management of the hall and thirdly, to re-engage the community with the hall. Maybe the most important being objective three.

Peter thanked all the people involved in helping at the hall in 2017/18 volunteers and committee members who have put a lot of effort in during the year from the initial deep cleaning, ongoing maintenance to the creation of new clubs and social events. It has been extremely hard work , but very rewarding when it is so well received by the community. A lot has been achieved but it has only been possible through the hard work of these people. The community overall has also responded well attending the numerous social events, the Christmas Dance with the Beavers, the Pantomime Sinbad the Sailor in February and new clubs like Badminton, snooker and keep fit as well as the established clubs. The bowls club has a record high membership of 32 with many new players, and yes, they are winning games in the new season. Chamberlin Hall is a very busy place these days which I would said that's evidence that the community has re-engaged. Peter said I think that's a tick for objective three.

Kevin Bailey talked about the years' finances and took the meeting through the detail of costs and revenues showing that despite some substantive cleaning, maintenance and repair costs and donations to local good causes the hall achieved a £44k turnover with profits of £10k. This compared to a £2k loss in 2017 so the profits are increasing and with less one off costs next year should follow the trend. Therefore we have a tick against the first objective. It is important that any business is efficient, well organised and legal. To explain the activities to tick off objective number two Jo Silburn talked about the business structure. She covered the upgrade to health and safety practice, DBS checking of key committee members and the creation of a new constitution. Its worth noting that the committee meets every month, Jo minutes all meetings to record the aggressive schedule of actions to prepare for events, review performance and plan marketing initiatives. This is particularly important to ensure we are transparent in the community with all our activities including our financial information. We freely communicate how much events earn and how we use the profits. So in summary, all three objectives have been achieved and the hall is set in a good direction for the future, financially, business focused and it has the community at its heart.

cont. on next page...

# BILDESTON CHAMBERLIN HALL

## ***What's on in July***



Every Monday 8.00pm to 10.00pm Badminton Club, Table Tennis & Darts

Everyone welcome, please remember to wear white soled trainers, not black.

Every Monday	10.00am to 11.00am	Toddlers Soft-Play Session
Every Tuesday	1.30pm to 2.30pm	Keep Fit with Callum
Every Tuesday	from 7.00pm	Snooker Club
Tuesday 7.15pm	(practice night & home games)	Carpet Bowls
Every Thursday	11.00am – 12.00	Zumba Gold with Sarah
Every Friday	6.00pm until dark!	Friday evening outdoor bowls
Every Friday	from 11am	Pilates for all
Every Friday	from 12.00	PostNatal Pilates
Saturday 7th	9.30pm - 2.30pm	Indoor Market
Sunday 8th	4.00pm	Bildeston Contemporary Choir Concert
Saturday 14th	7.30pm	Caribbean Night!
Friday 27th	7.00pm	Bingo!

---

from previous page...

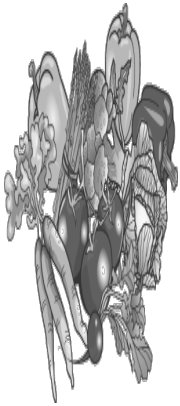
During the Q&A session the committee was asked how it could achieve more growth in financial performance. It was stated by Peter and Kevin that what is foremost in considering day to day choices of business is that it is a community hall, for the community so the decisions on the use of the hall are not always about profit, they are often about the best use for the residents of Bildeston. Kevin quoted a couple of examples where this had occurred. In short whilst the hall as to make a profit to sustain its future, it is there for the community to use for their own events even if they may be less profitable. Following the Q&A session the meeting was told that the current committee are prepared to stand for another year and this was accepted.

Peter Hutchings, Kevin & Debbie Bailey, Jean & Neil Wimpress, Kevin & Jayne Harrison, Ray Radley, Jo Silburn, George Miller, Tracey Rose and Fiona Lemon are elected for another year as trustees for Chamberlin Hall.

Peter congratulated the new committee on their re-election and thanked the meeting for its support for another year.

The full accounts shared at the AGM will be published in the August Bugle.

**CHAMBERLIN HALL - YOUR COMMUNITY HALL**



# BILDESTON

## ALLOTMENTS

Have you ever thought  
of growing your own  
vegetables and flowers?

There are currently vacant plots, both full size and half size. Water is available on site, and the rents are reasonable.

If you are interested, please contact:

Robin Weaver, 741048, or Ashley Hubbard, 740633

# Gardener

Tackling tasks -

Herbaceous, Shrub & Rose management

Lawn & Hedge maintenance

Planting - Design - Installation

A high standard of work, references & portfolio

Weekly - One-off - Seasonal duties

Hand-crafted HortSupports

**Combs, Suffolk**

**Fred Waters - 07788 523146**

## CPH Property Services

Painting & Decorating (Interior & Exterior)

Fencing

Patios, Pathways & Shed Bases

Plaster Boarding & Tiling

And much more.....

**Fully Insured & Free Quotations Provided**

Telephone Chris: 01787 210536 or 07717059370

Telephone Paul: 01449 740020 or 07880727630

Email: [chris.harman1990@gmail.com](mailto:chris.harman1990@gmail.com)





# COUNTRYSIDE OBSERVER



Wasn't May the 19th a memorable day? Not only did we have wall to wall sunshine and a certain wedding took place in far off Windsor, we also had the pleasure of the 179th Hadleigh show. What a super show it turned out to be. In fact the best one I think I have attended in the 14 years we have lived in Suffolk. Over 14,000 people came in to see everything from farm animals, poultry, dog agility classes, funfair, side shows and all manner of side stalls selling everything from country clothing, home made foods, wood carvings etc. If that wasn't enough the art and floral marquees were well worth a visit,

the floral displays commemorating WW1 especially poignant. I was able to pick up three fertile hen's eggs and that night slipped them under our broody French Maran who was delighted. She gets broody every year and has hatched two lots of eggs to date, she's a great mum! Fussing and clucking as the chicks run around her, it's a lovely sight to see. Abroad recently I saw Swallowtail butterflies happily at play amongst the spring wild flowers. Now is the perfect time to go butterfly spotting in our local countryside. Butterflies have been emerging in abundance and getting outside and spotting these beauties makes for a rewarding day out. Suffolk has 33 naturally occurring species of butterfly, with regular migrants including the silver-washed fritillary.

We can all help these beautiful insects with the minimum of effort. So set aside one square metre of your garden or outdoor space to plant a nectar-rich flowerbed, or a colourful container garden. Choose a sunny, sheltered position and group pots together on a patio, grow plants up a fence or wall, or commit an area of a flowerbed. Choose plants that originate from the UK to reduce the carbon footprint of your garden and eliminate the risk of disease. Imported plants may carry non-native pests or diseases that could contaminate your garden and spread to your neighbours.

The future of our butterflies, moths and other pollinating insects is under threat, as the places where they live are disappearing. Dead-heading after flowering keeps plants looking attractive and encourages more blooms and more butterflies. Inspire your neighbours to plant a plot and create a flowery super highway for the butterflies where you live. The cold start to spring may affect how some butterflies fare this year, as they could experience a delayed emergence, meaning they'll have less time to feed and breed but you can help by creating some 'plots for pollinators'. There are so many different flowers that are great nectar sources, like Catmint, Cosmos or Calendula. See if you can find just one square metre and you could attract lots of butterflies this spring and summer, like my favourite, the Red Admiral. It doesn't have to be on the lawn either – you could create a vertical garden on a bit of unused wall or fence and this would make a huge difference for pollinators." Previously widespread species, such as the Small Tortoiseshell and Garden Tiger moth, have seen their numbers plummet in recent years. Life and summer without butterflies would be miserable, but together we can help reverse their decline. Planting just one plot in each of the UK's estimated 24 million gardens would make a huge difference because if everyone did this, the whole country would be linked with nectar and pollen-rich flowers, butterflies would be in abundance.

**Mike Biddulph**

# BASE GARAGE LTD

**MONDAY – FRIDAY 7.30 – 6.00**

**SATURDAY 8.00 – 12.00**

- TYRES
- EXHAUSTS
- PUNCTURES
- BATTERIES
- WHEELBALANCING
- AIR CONDITIONING
- LATEST DIAGNOSTIC EQUIPMENT
- WELDING TO MOT STANDARD
- SERVICING & ALL REPAIRS TO ALL MAKES OF CARS  
& LIGHT VANS FLEET DRIVERS WELCOME
- MOT CLASS 4, 5 & 7
- COURTESY CAR AVAILABLE
- COLLECTION & DELIVERY SERVICE 5 MILES RADIUS  
OF GREAT BRICETT
- WINTER CHECKS
- HOLIDAY CHECKS

***£10 OFF!***

***YOUR MOT WITH THIS  
ADVERT***

**LOWER FARM ROAD, GT BRICETT, IPSWICH IP7 7DR**

**01473 658987 / 01473 657704**

# **Bildeston Village Stores and Post Office**

**Tel: 01449 740248**

## **Summer Opening Hours**

**Monday 26<sup>th</sup> March – Saturday 30<sup>th</sup> September**

**Monday – Saturday                      7.00am – 8.00pm**

**Sundays & Bank Holidays   9.00am – 5.00pm**

## **Village Stores**

**Monthly Londis promotions**

**Everyday provisions**

**Freshly baked bread and croissants**

**Fresh fruit and veg**

**Local ham, bacon and sausages**

**Bildeston Honey**

**Hot food and drinks to-go**

**Logs, coal and kindling**

**Cards, gift wrapping, stationery supplies**

**Newsagents and off-licence**

**Post Office (Open as above)**

**Postal services - Parcel Force**

**Cash deposits and withdrawals via chip and pin**

**(All main bank cards)**

**Postal orders**

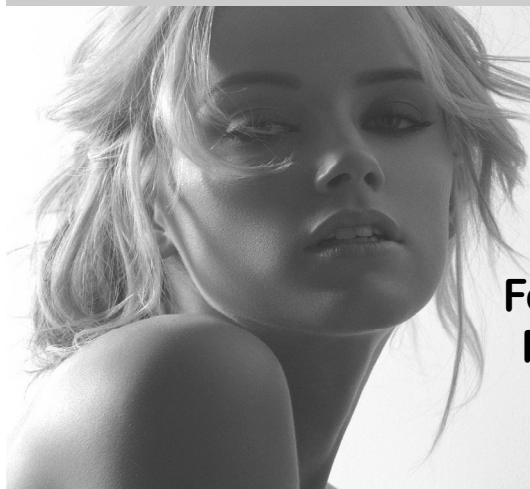
**e top ups and bill payments**

**Foreign currency to order**

**Lottery**

# Studio 66

*Ladies and Gents Hairdressers*



**Restyling**

**Foils & Highlights**

**Perms & Colours**

**Shampoo & Sets**

**Cut & Blow Dries**

**Friendly Service from our Professional Team**

**Tue & Wed Senior Citizens**

**\*\*\*special rates \*\*\***

**Opening Times Tues - Friday 9 - 5 pm Sat - 8 - 1pm**



**Tel 01449 740644**

**52A High St Bildeston IP7 7EA**



# Bildeston Ladies Club



As summer gets into full swing, I am hoping we will continue to see some more good weather. With long summer evenings in mind, we have planned for

our next meeting on July 5<sup>th</sup> to be a visit to Bildeston's very own nature reserve - the Kings' Pightle in Consent Lane. We will arrive at the Sportsfield car park either on foot or by motorised transport.

If travelling by car please be aware that some of our ladies will be travelling on electric scooters, so please drive slowly along the lane. If you need transport to the field please give me a call.

Once at the Sportsfield, make your way across the playing field (by the edges) to the entrance to the Pightle at the far bottom corner. We will start our evening with a short talk from Anne Slater who is a member of the Kings Pightle committee.

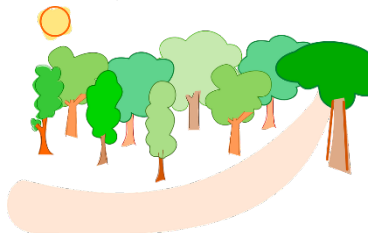
We will then meander through the reserve, stopping off at the bird hide and ending up in the top meadow to enjoy the sunset. If you wish to bring a folding chair or a rug to sit on and some refreshment to enjoy please do so. (All of this planning will of course be subject to the uncertain nature of a British summer and we may just end up in raincoats huddled in the bird hide !)

So - fingers crossed for a warm evening and I look forward to seeing you there.

Members £2    Guests £3

Chairlady - Jo Silburn - 01449 257045

Secretary - Jean Radley - 01449 743650



## **VILLAGE GOLF DAY - MONDAY 17th SEPTEMBER**

*This year's 'Bildeston Open' will be held at Hintlesham GC on Monday 17th September from Noon. More detail to be published in Aug & Sep editions.*

*All those interested please contact*

*Martin Rodgers on 743120 or [mam.rodgers@btinternet.com](mailto:mam.rodgers@btinternet.com)*

# COUSINS & SON BILDESTON LTD

available to carry out all your building requirements  
from

## Renovations / Alterations / Extensions to General Repairs

Please contact Paul for a free estimate

01473 658919 or 07876 244461

or email [paul.cousins268@btinternet.com](mailto:paul.cousins268@btinternet.com)



## Paul's Carpentry

**All Carpentry projects considered large  
or small**

**Decking, Garden Rooms, Wardrobes,  
Shelving, Children's play houses and  
tree houses.**

**Mobile: 0779 234 0365**

**Tel: 01449 616 888**

**email: [paulhb100@gmail.com](mailto:paulhb100@gmail.com)**

**[www.carpentryservicesinsuffolk.co.uk](http://www.carpentryservicesinsuffolk.co.uk)**



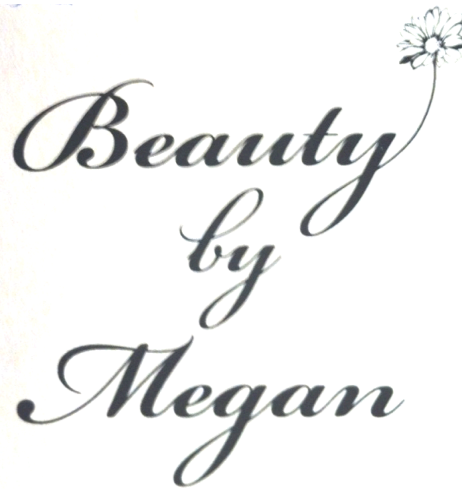
# KINGS HEAD & Brewery

A huge thank you to **all** for a successful Beer Festival, especially to my wife Sue and to everyone that worked with and supported us.

[www.bildestonkingshead.co.uk](http://www.bildestonkingshead.co.uk)

- Thank you also to everyone who helped raise over **£750** for **Against Breast Cancer**, **£127.50** for **Cancer Research UK** and **£224** for our village music festival, **BNatural 7-9<sup>th</sup> Sept.**
- Here's our **free live music** for **July**: every **Wednesday** is **Open Mic Night** from **8:30pm**; from **9pm Saturday 28<sup>th</sup>** award nominated blues guitarist/singer/song writer **Clare Free** who's performances are fiery and heartfelt; from **1pm Sunday 29<sup>th</sup>** have a relaxing lunch accompanied by **Kevin Nightingale** on contemporary classical acoustic guitar.
- Thursday is bar games night, there's all the usual plus **Poker**, **Skittles** and **table top football**, **snooker & tennis**. **Open Deck/Vinyl night** is **19<sup>th</sup> June**. **Charity quiz night** is **26<sup>th</sup> June** at 8:30pm, please arrive by 8pm. To book a quiz table telephone Sue/Nigel on 01449 741 434. Thank you to May's quiz teams who raised **£48** for **Against Breast Cancer**.
- Our good value homemade food uses quality ingredients that are locally sourced where possible. Meals are cooked to order, available to eat-in or take-away and in child sized portions. Phone **Sue or Nigel on 01449 741434** for a table.
- We brew our own real ales on-site (tours by arrangement).
- Our opening and food times are as follows:

Wednesday	Open 6pm-12am (open mic/buskin night)
Thursday	Open 6pm-11pm (bar games night)
Friday	Open 4pm-12am (full menu 5-9pm, T/Away 5pm)
Saturday	Open 12pm-12am (full menu 12-2pm & 6-9pm)
Sunday	Open 12pm-10:30pm (roast/Sunday menu 12-3pm)



# Beauty by Megan

Megan is a mobile Beauty Therapist with over 13 years experience in the Beauty Industry. Offering professional and thorough treatments in the comfort & convenience of your home. Alternatively I welcome appointments at my log cabin in Hitcham. My log cabin is in a peaceful, rural location and benefits from off-road parking!

**A variety of treatments include:**

Dermalogica facials/Spray tanning/Waxing/Eye treatments/Jessica manicures & pedicures/Jessica Gel Nails/Foot health maintenance (nail trimming & hard skin removal)  
LVL Eyelash perming/Reflexology

Covering the heart of beautiful Suffolk.  
Please phone for any enquiries or for a full price list.

**Megan Pryke VTCT, BABTAC**  
**07876 717 008**





# INDOOR MARKET

SATURDAY 7<sup>TH</sup>  
JULY

9.30am – 2.30pm

Forthcoming dates: Sat 4 August, Sat 1  
September, Sat 13 October, Sat 10 November,  
Sat 8 December.



## Bildeston Monthly Market

**Chamberlin Hall,  
Bildeston. IP77EZ**

**CAKES**

**BBQ**

**ICE CREAM**

**SPICES**

**PICKLES AND JAMS**

**JEWELLERY**

**CRAFTS**

**CARDS**

**FACE PAINTING**

**REFRESHMENTS**

**LICENSED BAR**

**AMPLE PARKING**

**CHILDRENS**

**PLAGROUND**

# PAINTING SERVICES

## Rob Harrison

Painting & Property Maintenance

Tel: 01449 741041

Mob: 07852 795469



### Green Farm Vintage China

#### Hire

A large range of pretty vintage china and glass to hire for all occasions, including tea parties and weddings.

With every order 20% will be donated to the charity of your choice.

For more information, please contact

Carole Homer:

Tel: 01449 741498

Mobile: 07879265756



Email: [carole.homer@btinternet.com](mailto:carole.homer@btinternet.com)

### Dentist

Paul Rolfe BDS

Veneers & Crowns in a  
single visit

Dental Implants

Family Dentistry

**Lavenham &  
Long Melford**

**01787 882722**

[www.paulrolfedental.co.uk](http://www.paulrolfedental.co.uk)

## COLLINS & CURTIS MASONRY LTD

est.1925

### Memorial Stone Masons

*Dedicated craftsmen who  
combine traditional with new techniques*

Bespoke memorials  
Additional inscriptions  
Restoration and cleaning  
Home visits by appointment

**01473 250932**  
**[www.collinsandcurtis.co.uk](http://www.collinsandcurtis.co.uk)**



## Antique Renovations

The Restoration experts



Lavenham Studios, Brent Leigh Road, Lavenham  
Tell: 01787 248511  
[www.antique-renovations.co.uk](http://www.antique-renovations.co.uk)  
email - [antiquerenovations@live.co.uk](mailto:antiquerenovations@live.co.uk)

## Bildeston Sportsfield Pavilion



### looking for a venue?

Function room and sportsfield for parties, events, rehearsals, meetings,  
clubs and much more.

For more information and competitive rates please ring 01449 741563  
or e-mail [secretary@sportsfield.bildeston.org](mailto:secretary@sportsfield.bildeston.org)

# BARGEWELL SKIP HIRE

2 - 8 yard skips

1 ton waste bags

We also collect any full waste bags

Long or short term hire

Delivery 7 days a week

Fast & friendly service

**Stowmarket 01449 615056**

Mobile: 07770 452378

High Rd, Gt Finborough, Stowmarket, Suffolk

[www.bargewellskiphire.com](http://www.bargewellskiphire.com)

Credit cards accepted

## CHIMNEY SWEEP

### ECO SWEEP CHIMNEY SERVICES

NEW POWER SWEEPING METHOD USED

FOR A MORE THOROUGH CHIMNEY CLEAN  
THAN BRUSHES.

INDUSTRIAL HEPA FILTERED VACUUM.

FULLY INSURED.

INSURANCE RECOGNIZED CERTIFICATES ISSUED.

SPOTLESS, RELIABLE AND FRIENDLY SERVICE.

ALL CHIMNEYS, WOOD BURNERS, AGA, BOILER

FLUES SWEEP.

GUILD OF MASTER SWEEPS CERTIFICATED MEMBER.



**TEL. 01359 232335**



**BILDESTON COMMUNITY CYCLING**  
**HAVE YOU GOT A BIKE IN THE SHED?**  
**WHY NOT JOIN OUR**  
**TUESDAY EVENING RIDES**

**Every Tuesday evening** leaving at **6.45pm** from the Market Square, and lasting about an hour. There are two groups of riders.

**A SLOW RIDE**, starting at 6 to 8 miles, specifically for new and returning riders, at a speed to suit the riders. Walking on hills is definitely allowed, and no Lycra is necessary!

**A REGULAR RIDE** of 15 miles for more confident riders.

**If you used to cycle, or want to start, why not join us this year?**

**Just turn up at the Market Square.** Warm clothing and lights may be needed!

If you have any queries, please contact Robin Weaver on 01449 741048.



**Dan Brown**

**Your local professional Electrician**

Web: [www.saveelectrical.co.uk](http://www.saveelectrical.co.uk)

Phone: 07731 67 27 57

Email: [dan@saveelectrical.co.uk](mailto:dan@saveelectrical.co.uk)


**Over 15 years of experience to provide you with a friendly, professional and competitive service**

Based in Rattlesden. All Aspects of Electrical Work Undertaken, including: Installation, Repair and Maintenance, Test and Inspect, Home Theatres, Smart Technology, Security

**NIC Approved Installer, 17th Edition, Part P Qualified and Insured**

**SAVE Electrical** can save you money on your electricity bill. By Changing your 50w downlights to Integrated LED downlights we can save you up to £15 per year per light in energy bills. Costing from £30 per light to supply and install, you will have paid for it within 3 years... and done your bit to stay green.





**A&L Roofing (suffolk) Ltd**

**Steven Allum**  
**Jamie love**

Specialising in Re-roofing, Repairs,  
Flat roofing & all types of Lead work

Contact. Jamie 07547594699  
Steven 07545071147



**The Grooming Lounge**

**A full grooming service for your dog**

Ipswich • Stowmarket • Bury St. Edmunds

---

Grooming Lounges located at:

Ipswich Veterinary Centre	Stowe Veterinary Centre	Moreton Hall Veterinary Centre
Tel: 01473 555 000	Tel: 01449 776 216	Tel: 01284 747 000

**CHAMBERLIN HALL - BILDESTON PRESENTS**  
**Phaze II Caribbean Steel Band on 14th July**  
**Doors open 7.30pm**  
**Tickets £15 including B-B-Q**



Phone Jean or Neil for tickets on 01449 741362



# Upbeat Contemporary Choir

Our group is:

**Fun.....Inspiring.....Exciting**

**In a Word - UPBEAT!**

Pop, Jazz, Reggae, Easy Listening, Folk,  
Songs from the Shows and Musicals,  
Classical, Blues.....

So come & join the choir - Mondays in term  
time 7-9pm at Bildeston Primary School.

To find out more call Andrea  
on 01449 740601 / 07778576534 or  
a.king00@btinternet.com

We look forward to seeing you there.  
Why not come next Monday and see how  
you get on?

Director and Pianist Andrea King presents



## UPBEAT CONTEMPORARY CHOIR

**IN CONCERT RAISING FUNDS FOR**

## FRIENDS OF BILDESTON SURGERY



Tickets include a  
delicious afternoon  
tea

**Sunday 8th July 4.00pm**

**Chamberlin Hall, Bildeston**

**Tickets: £8 adults / £3 children**

For tickets contact Andrea King on 01449 740601 or  
a.king00@btinternet.com



## FIFTH ANNIVERSARY OF THE JOHN PEELE CENTRE

The John Peel Centre for Creative Arts, a Community Interest Company, is situated in the middle of Stowmarket adjacent to the church and 5 minutes walk from the train station. Set in a wonderfully converted Victorian corn exchange, it offers a full and varied programme of events with something for everybody including poetry, comedy, theatre and of course music.

The aim of the Centre, predominantly run by volunteers, is to include and encourage emerging less well known acts as well as hosting established artists. With great acoustics and an intimate stage it has become a popular venue for acts nationwide. The building is also available for private hires including a fully stocked Adnams licensed bar.

For those who haven't been, visit the website [www.johnpeelcentre.com](http://www.johnpeelcentre.com) for more information. Meanwhile, if music is your thing, why not drop in for an 'emerge' night, tickets only £3.





## THANKS FROM REV'D LIZ LAW

*I would like to say a huge thank you to everyone who was generous and kind in donating to my retirement gift last November. I put the money towards buying a little summerhouse for our garden and the base for it to stand on. It took a while as I was let down by the first people who quoted to do the work, so in the end we went to B&Q to buy the summerhouse, and found a local man to do the hardest parts while we held things and made drinks and painted it. I love it now it's done. It looks just the way I hoped and will house some gardening things at the back and be a painting studio at the front, by the door and windows. I couldn't have afforded it without your gift. It has been a lovely way in to being retired!*

*Yours, Rev. Liz.*



# ANDYS LOGS

Well Seasoned Barn Stored Hardwood Logs

Loads Delivered or Pick Up

Wood cut to size for any Heater

Large bags of wood collection only

**CALL ANDY 07881 684687**

*\*Bags of wheat for Chicken feed also available collection only*

## J M GARDENING SERVICES

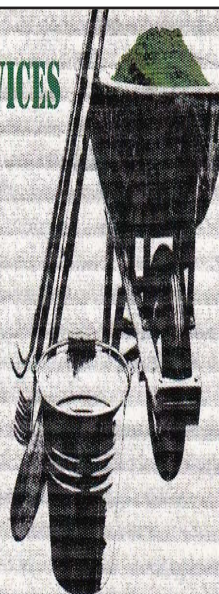
**FOR ALL GARDEN  
MAINTENANCE**

**NO JOB TOO SMALL**

**JOHN MORGAN**

**TEL:07855 855994**

**johnmorgan007@btinternet.com**



Canine Wellbeing At The Pheasantry  
Wattisham, Suffolk IP7 7LA

## **Dog and Puppy Day Creche**

We provide a very special service of looking after your dog or puppy. In the comfort of our own home, whilst you are at work, or whilst your dog is recovering from veterinary treatment. Why not allow your puppy to socialise with other canine friends. Daily collection and delivery is available.

## **Dogs on Holiday**

Whilst you are on holiday, why not let your canine friend have one too. She/he can come and stay in the comfort of our own home, where she/he will be treated as one of the family.

**Also available**

## **Canine Hydrotherapy**

For more details phone:

**01449 740659 mobile 07956286056**

**or visit our website: [www.caninewellbeing.co.uk](http://www.caninewellbeing.co.uk)**



# **LAXFIELD HOUSE NURSING HOME**

## **BRENT ELEIGH, Nr LAVENHAM, SUDBURY, SUFFOLK**

Situated in a quiet village location with beautiful gardens, offering residential and full nursing care for elderly people.

A highly trained team of nursing sisters and care staff provide excellent nursing care with kindness and compassion, ensuring privacy and dignity at all times.

*\* Long or short term respite care available \**

A warm welcome is always extended to all visitors



All rooms are well appointed with en-suite facilities.  
Nurse Call System, Passenger Lifts, Various Public Rooms

**This nursing home was established over 25 years ago by the current proprietor and family with ongoing input and management.**

**Enquiries to - Mrs J. Carne RGN, RM, (Matron)  
Mrs E. P. Knight RGN, RM, Mr N. Knight (Proprietors)**

**Telephone (01787) 247340 / 495**

**[enquiries@laxfieldhouse.co.uk](mailto:enquiries@laxfieldhouse.co.uk)  
[www.laxfieldhouse.co.uk](http://www.laxfieldhouse.co.uk)**



**Member of the Registered Nursing Home Association**



Karen Finch RHAD FSHAA FRSA

# How's your hearing?

**Take the first step towards better hearing and  
book a hearing test with The Hearing Care Centre!**

Find us locally at:

The Health Centre, **Hadleigh**  
The Country Practice, **Needham Market**  
StowHealth, **Stowmarket**

- Hearing tests ■ Latest digital hearing aids ■ Outstanding aftercare
- Earwax removal ■ Custom made ear protection ■ Home visits

**To book your appointment call 01473 230330**

■ Award Winning ■ Family Run ■ Private ■ Independent ■ Local

[hearingcarecentre.co.uk](http://hearingcarecentre.co.uk)

# Recipe of the Month

## English Pea Soup, Smoked Goat's Cheese & Almonds

*with thanks to Chris Lee Head Chef at The Bildeston Crown*

---

### Ingredients

- 1 large onion
- 100 g butter unsalted
- 1 500g bag of frozen peas – fresh can be used but will require longer cooking
- 1/2 bunch mint
- Salt (to taste)
- 200ml good quality chicken stock or veg stock



### Method

- Slice onions really finely
- Sweat onions in butter but being careful not to colour.
- Add stock, mint and salt and bring to boil.
- Add peas (still frozen) and place a lid on top until up to boil
- Take off the heat, blitz with a blender and pass through a sieve so that it is velvety smooth

At The Bildeston Crown we serve it garnished with fresh minted peas, goat's cheese and almonds. Chopped ham also works well. The dish is then lightly smoked under a covered cloche which is then lifted at the table for that extra element of surprise.





## PHYSIOTHERAPY AND PILATES NOW AVAILABLE



Claire is an experienced  
Physiotherapist and certified  
Pilates Instructor.

### Services offered:

- Physiotherapy
- Womens Health Physiotherapy
- Running Analysis
- Pilates classes (BILDESTON & Hadleigh)
- Home visits

### PHYSIOTHERAPY CAN HELP WITH:

- Muscular aches and pains
- Low back pain
- Hip and pelvic pain
- Neck pain
- Joint pain or sprains
- Repetitive strain injuries
- Nerve pain
- Ante and post natal pain
- Pre- surgery

Clinic Address:  
A Touch of Beauty  
8 George St, Hadleigh,  
IP7 5BB.



[www.fitframephysio.com](http://www.fitframephysio.com)

Tel: 07900440141

E: [Claire@fitframephysio.com](mailto:Claire@fitframephysio.com)

## Brook Farm Studio

Bildeston's studio for painting, pottery,  
figurative drawing, felt making, crafts  
and creative embroidery

Website: [www.brookfarmstudio.co.uk](http://www.brookfarmstudio.co.uk)  
email: [brookfarmstudio@gmail.com](mailto:brookfarmstudio@gmail.com)  
Call Hazel 07432 138966/01473 823819

## N D ROSE

Int / Ext Decorating

- Decorating
- Wall / Floor Tiling
- Gutters Cleaned /  
Repaired / Replaced
- General Building  
Maintenance

**Local established tradesman 25  
years experience**

**Free estimates good rates  
References available**

Tel: 01787 211042

Mob: 07518 040465

3 Fen Street Boxford CO10 5HL

# **BILDESTON PRODUCE SHOW**

**Saturday 26th August 2018**

**AT ST MARY MAGDALENE CHURCH**



**PROGRAMMES AVAILABLE AT**

**BANK HOUSE STORES—ask at the  
counter for a copy.**

**Nancy Dales (just knock)**

**142 High St.**

**Angela Rodgers (just knock)**

**Malham, 36 High St**



# APRIL COTTAGE CATTERY

**April Cottage, Powney Street, Milden, Ipswich. IP7 7AL**



## Newly opened Licenced Cattery exclusively for cats.



**Large light airy chalets with exercise areas overlooking stables and fields.**

**Quiet areas for shy cats or busy window views for those needing entertainment.**

**Facilities to cater for elderly cats, kittens or cats with special needs.**

**All diets catered for (except prescription).**

**Daily grooming and administering of medicines are free of charge.**

**Family chalets which can cater for up to 6 cats (same household only).**

**Pick up and delivery service free up to 5 miles ( £1 for every mile thereafter to a maximum charge of £10).**

**Prices start from £7.50 a day.**

**Special rates for long stays.**



**Please call Anne or Kevin on 01787 247302 or 07985 404813**

**Email: [info@april-cottage-cattery.co.uk](mailto:info@april-cottage-cattery.co.uk) [www.April-Cottage-Cattery.co.uk](http://www.April-Cottage-Cattery.co.uk)**

**[www.facebook.com/aprilcottcats](https://www.facebook.com/aprilcottcats)**



**Now Frying At Market Square  
Bildeston**

**Thursdays 4pm – 7.30pm**

**Fridays 11am – 1:30pm**



**Local Mobile  
Fish & Chip Shop**

**Functions Catered For  
Shows • Parties  
Weddings • etc.**

**Telephone  
01473 830771**

# **BILDESTON ELECTRICAL**

**Rewires, Extensions, Board Changes or New Installations**

**Any Alterations to Existing Installations**

**(lights, sockets, etc.)**

**Contact Ian**

**01449 743664 or 07754 723685**

# BILDESTON PARISH COUNCIL

## DRAFT Minutes of the meeting of Bildeston Parish Council

held on Wednesday 13th June, 2018 in Chamberlin Hall at 7.30 pm

### In attendance:

Councillors: R Taylor (Chairman)  
D Dempsey, A Guttridge, P Hutchings, A Hubbard & R Lester  
Also Present: D Blackburn (Clerk)

The Chairman, Councillor R Taylor, welcomed everyone to the meeting.



### C17/18/19 APOLOGIES FOR ABSENCE

Apologies for absence were received from Councillor P Bullen and District Councillor M Creffield.

### C18/18/19 DECLARATIONS OF PECUNIARY AND NON-PECUNIARY INTERESTS

The following declarations of non-pecuniary interest were made:

Chamberlin Hall Management Committee – Councillor Hutchings  
Kings Pightle Management Committee – Councillors Hubbard, Lester & Taylor;  
Sportsfield Management Committee – Councillors Lester & Taylor; and  
Parochial Church Council – Councillor Lester

### C19/18/19 DISPENSATIONS IN RESPECT OF PECUNIARY INTERESTS

There were none.

### C20/18/19 MINUTES OF PREVIOUS MEETING

It was **AGREED**: That the minutes of the meeting held on 9th May, 2018 be signed by the Chairman as a correct record.

### C21/18/19 DISTRICT COUNCILLOR'S REPORT

District Councillor Creffield had submitted a written report which contained two main items of interest:

- An update on the proposed redevelopment of the Corks Lane site, formerly occupied by the District Council.
- Publication by the District Council of details of a 5-year land supply for development in Babergh.

### C22/18/19 COUNTY COUNCILLOR'S REPORT

County Councillor Lindsay gave a report on:

- Proposals to be considered by the Cabinet to extend charging for school bus services.
- The appointment of Councillor Matthew Hicks as the new Leader of the County Council to replace Councillor Colin Noble.
- Discontinuation of Cabinet Committees and the introduction of Policy Development Panels.

Further to Minute C16/17/18, he had made enquiries into the supply of signage at the junction of Rotheram Road and Artiss Close, warning motorists about children playing in the area. Following discussion, Councillor Lindsay undertook to find out the cost of providing the signage so that it could be considered at the next Parish Council meeting.

Some Members of the Parish Council felt that resources were being used inefficiently in undertaking highways work, with different teams involved in the same piece of work on different days. Some road works, including potholes, were repaired whilst others, nearby, were left pending a further visit. County Councillor Lindsay stated that the County Council's website provided

information about the start and end dates of road maintenance works. He would make further enquiries into current practices.

There was also a discussion about the road surface along the High Street and Councillor Dempsey stated that in places, the road appeared to be close to collapsing. It was understood that the mains drain required replacing by Anglian Water and if this was planned, the works should be coordinated with works by the Highways Authority to resurface the High Street. County Councillor Lindsay was asked to make further enquiries.

#### **C23/18/19 UPDATE ON VILLAGE AMENITIES (UNDER THE MANAGEMENT OF OTHER BODIES)**

Councillor Hutchings reported that the AGM of the Chamberlin Hall Management would be held on Thursday, 14th June, 2018 at 7.30pm. It was reported that the 2017/18 year had been successful in terms of community use and the financial performance of the Hall.

#### **C24/18/19 PARISH COUNCIL AMENITIES**

Further to Minute C190/17/18, Councillor Hubbard had removed the loose render from the inside the first level of the Clock Tower. He made special mention of the help he had received from Sonny Randall-Hook.

The Clerk had been informed by the Maintenance Coordinator, that fresh molehills had appeared near to the first car park and between the sports pavilion and football pitch. Command Pest Control would be contacted to undertake a site inspection.

Further to Minute C16/18/19 about fires being held at Coronation Playground, this had been investigated by the Maintenance Coordinator and found to relate to disposable barbecues.

T D Joinery had installed a community noticeboard on the Clock Tower on the opposite pillar to the Parish Council noticeboard and Councillor Lester was give the key.

The Clerk had prepared a draft letter to the Police and Crime Commissioner about local crime which was approved by the Parish Council for dispatch.

Mr Keith Taylor had been appointed to a second position of Maintenance Coordinator with the Parish Council. The Clerk was asked to examine ways of expediting the training required to fulfil the role so that he could commence his duties as soon as possible.

#### **C25/18/19 CLERK'S REPORT**

The Clerk referred to communications received from a local parishioner with regard to the neighbourhood planning process.

#### **C26/18/19 INTERNAL AUDITOR'S REPORT**

The Parish Council received and reviewed the internal auditor's end of year report for 2017/18. The report gave the Parish Council a "clean bill of health" in respect of its governance and financial arrangements. There was reference to the 2016/17 accounts being subject to a rounding error of £1 but this had been checked with the external auditor and did not require alteration.

**It was AGREED:** That the internal auditor's report for the year ending 31st March 2018 be received by the Council.

#### **C27/18/19 AUTHORISATION OF PAYMENTS AND OTHER FINANCIAL MATTERS**

**It was AGREED:** That the following payments be authorised:

<b>Payee</b>	<b>Description</b>	<b>Budget Category</b>	<b>Amount</b> (inc. VAT)
David Blackburn	Clerk's Pay	Salaries & Expenses	£169.52

David Blackburn	Expenses	Salaries & Expenses	£18.00
Adrian Chinery	Grounds Maintenance	Salaries & Expenses	£400.00
Adrian Chinery	Expenses	Salaries & Expenses	£116.20
Tomlinson Groundcare	Grounds Maintenance	Playgrounds & Open Spaces	£522.58
Tomlinson Groundcare	Grounds Maintenance	Playgrounds & Open Spaces	£161.69
Creeping St Peter Parish Council	Lockable Cupboard (contribution to shared use)	ICT & Website	£55.00
HMRC	PAYE/NIC Arrears	Salaries & Expenses	£91.00
SALC	Internal Audit 2017-18	Audit	£308.40
Came & Co	Ride on Mower	Insurance	£377.04
BHIB Insurance Broker	General Insurance	Insurance	£671.16
T D Joinery Ltd	Community Noticeboard	Investment in Assets	£360.00

(Note: General Insurance is approved as a 3 year agreement with Aviva through BHIB)

## **C28/18/19 INFORMATION GOVERNANCE**

The Clerk reported upon the Parish Council's information governance arrangements having regard to the new General Data Protection Regulations applying to the records and communications held by the Parish Council, Clerk and Members of the Parish Council.

The Clerk had undertaken a data audit of the types of data held, how it was collected, the basis for processing, how it was used and stored and period for retention. The basis for data use was that it was used as part of a "public task". The Chair and Clerk had considered the encryption of the Clerk's laptop and a lockable cupboard had been purchased jointly with other Parish Councils for storing paper records. It was noted that a Bill was being considered in Parliament which, if enacted, would mean that Parish Councils would not be required to appoint an independent Data Protection Officer. It was noted that each Member of the Parish Council was a data controller which, made them accountable for the secure and appropriate use of personal data that they had access to in the performance of their duties.

The Clerk had liaised with the Parish Council's insurers and it was noted that insurance cover had been extended in respect of data protection in light of the introduction of the new regulations.

### **It was AGREED:**

- That the report on information governance be received and noted;
- That the contents of the data audit be received and endorsed;
- That a privacy notice be published within the Parish Council section of the Bildeston village website;
- That the steps taken to ensure the security of personal data be endorsed;
- That the Parish Council's Data Protection and Security Policy be updated; and
- That the position with regard to the appointment of a Data Protection Officer be maintained under review.

**Planning Appendix A: Planning Applications Consultation**

Reference	DC/18/02277
Address	Wheatear Church Farm Bildeston Ipswich Suffolk IP7 7EE
Proposal	Householder Planning Application - Erection of two storey rear and side extensions, single storey side extension to dwelling, new pitched roof to existing front dormer and all associated works.
Representation	No objection

**Planning Appendix B: Planning Applications Decisions by Babergh District Council**

Reference	DC/18/01202
Address	Plot No. 4532 Off Rotheram Road Bildeston Ipswich IP7
Proposal	Confirmation of Compliance with Conditions- Application B//92/00309; Erection of six 3 bedroom houses, twenty 2 bedroom houses with construction of associated vehicular accesses as amended by revised drawings received on 30.06.92 and 08.07.92
Decision	Granted

Reference	DC/18/01645
Address	Bentons, Wattisham Road, Bildeston, Ipswich Suffolk IP7 7JR
Proposal	Householder Application - Erection of courtyard extension and wall following demolition of existing
Decision	Granted

**C30/18/19 PUBLIC SESSION**

There were no matters raised.

**C31/18/19 MATTERS TO BE BROUGHT TO THE ATTENTION OF THE COUNCIL**

Councillors Guttridge and Hubbard gave an update on steps being taken to install a secure fixing for the Christmas tree in the Market Square.

Further to a proposal made at a previous meeting, Councillor Guttridge had enquired of Keep Bildeston Beautiful (KBB), whether its' members would be prepared to support a "Bildeston in Bloom" initiative within the village each year. It was noted that KBB were supportive of the proposal subject to further consideration of how the idea might be implemented.

Councillor Guttridge reported that KBB was holding monies, raised from fundraising, to protect the village against development. It had been suggested that the funds might be transferred to the Parish Council subject to their use for this specific purpose in future years. The consensus of the meeting was that the Parish Council was agreeable in principle to the proposal should KBB wish to pursue this course of action.

Councillor Lester referred to a litter bin post that required replacing on Consent Lane.

Councillor Lester reported that he would be asking for the support of the Parish Council at its next

meeting with regard to the maintenance of the Parish churchyard.

Councillor Hutchings reported upon liaison he had undertaken with Bildeston Rangers FC about their ambitions to play in the Touchline SIL Suffolk and Ipswich Football League Premier Division having finished third in Division 1 in 2017/18. There was a discussion about the management of the club and accessing external funding to help with the development of football, and potentially cricket facilities, at the Sportsfield.

Councillor Dempsey reported upon an increase in speeding motorists along the High Street. The matter would be referred to County Councillor Lindsay. A quarterly update from Community Speedwatch would be sought.

### **C32/18/19            EXCLUSION OF THE PUBLIC**

**It was AGREED:** That by virtue of the provision of section 1(2) of the Public Bodies (Admissions to Meetings) Act 1960, the public be excluded from the remainder of the meeting on the grounds that publicity would be prejudicial to the public interest because of the confidential nature of the business to be transacted.

### **C33/18/19            STAFFING UPDATE**

The Clerk reported on the Parish Council's HR arrangements

**It was AGREED:**

a. That the current pay scales of posts be confirmed as being:

Clerk SCP20 +12%

Maintenance Operatives SCP15 +12%

Clock Winder's Annual Honorarium (calculated in accordance with reference to the National Minimum Wage and Standing Orders)

b. That the Clerk and Vice-Chairman review the letters of appointment and contracts of employment of staff and a follow-up review be undertaken in 6 months; and

c. That external HR support be obtained, as required, should any HR matters arise.

The meeting closed at 9.25pm.

## **BILDESTON SURGERY SPECIAL NHS CELEBRATION**

*The NHS is turning 70 in July and Bildeston Surgery is holding a special Tea Party here at the surgery to celebrate.*

*All are welcome on Wednesday 18th July at 2pm.*

*We would love for patients to join us to celebrate with tea and cake and share memories of the NHS. Please contact the reception for more information, transport may be available.*





**BILDESTON COMMUNITY CYCLING**

**IN ASSOCIATION WITH**

**CYCLE CLUB SADBURY**

# **BILDESTON CYCLING FESTIVAL**

**SATURDAY 21 JULY, FROM THE SPORTSFIELD**

**8.30am: 209k Suffolk Lanes Extravaganza  
audax ride**

**8.45am 168k 100 miles of Suffolk Lanes audax  
ride**

**9.30am: 104k Bildeston Lanes audax ride**

**2.00pm: 25 mile Bildeston Challenge ride  
Quiet roads, and a cafe stop**

**2.30pm: Bildeston Family Challenge rides  
5 or 11 mile routes  
Quiet roads after you leave the village  
Or just bring the children for a ride  
around the Sportsfield; refreshments!**

**Audax rides, open to all, in conjunction with AudaxUK; see  
[www.aukweb.net/events](http://www.aukweb.net/events) for details of how to enter.**

**All other rides: just turn up and register. £3 entry for 25  
mile ride for local hospices; family rides free.**

**Helmets compulsory for all children.**

**No unaccompanied children under 16 years old.**

**Further information: Robin Weaver; 01449 741048; [pamandrobinw@gmail.com](mailto:pamandrobinw@gmail.com)**

# D J Dunstone Optometry

## 3 Queen Street, Hadleigh

For your entire eye care needs,  
including contact lenses, latest Swept  
Source OCT eye scanner, examination of  
children and home visits

Frames include: Polo Ralph Lauren, Ray-  
Ban, Elle, Paul & Joe and Esprit



To find out more please call in, telephone 01473 823755  
or see [dunstoneinsight.com](http://dunstoneinsight.com)



**A & P**

## **WINDOW CLEANERS.**

**Providing a friendly, reliable and efficient service since 1995.**

**Andy: 01449 722680. Paul: 01473 604714.**

**Mobile: 07711 381919.**

## **FULLY INSURED.**

**With over 50 years of Traditional Window Cleaning experience,  
we're at the top of our Profession!**

- ❖ Home Maintenance
- ❖ Carpentry
- ❖ General Building Work
- ❖ Brickwork & Blockwork
- ❖ Stonework
- ❖ Hand Built Sheds
- ❖ Floor & Wall Tiling
- ❖ Paving & Patios
- ❖ Kitchens & Wardrobes
- ❖ Pergolas
- ❖ Carpentry
- ❖ Bespoke Fencing
- ❖ Property Maintenance
- ❖ Repairs
- ❖ Advice & Planning
- ❖ Shop & Office Fitting
- ❖ Renovation Work



**Bildeston - Suffolk.**

**For a prompt & reliable service.**



**01449 740275 or 07580 753020**  
**Email: bobbuckle10@gmail.com**

## **RESEARCH MY ROOTS**

*Let me build your family tree*

**If you are looking to trace long lost relatives,  
 search for a biological parent or just wish to find  
 out who your ancestors were, please get in touch.**

**[www.researchmyroots.com](http://www.researchmyroots.com)**

**[ali@researchmyroots.com](mailto:ali@researchmyroots.com) | Tel : 07704 712643**

My name is Ali MacDonald and I have a passion for Genealogy. I have a diploma in Genealogy and many years experience in research. If you are looking to trace long lost relatives, search for a biological parent or just wish to find out who your ancestors were, please get in touch. My prices are very competitive and I live in STOWMARKET.

Thanks for reading this and I hope to hear from you!

Please visit my website for more details:

Friendly Experienced  
Teacher offers  
Individual

## MATHS Tuition

Speciality  
Confidence Building

**KS1 – KS3**

Call Colin Plummer on  
01449 736918  
for details and availability  
or email:  
[colinp52@btinternet.com](mailto:colinp52@btinternet.com)

## *Angel Delights*

**Outside Caterer &  
Specialised Confectioner**

*We cater for all occasions including;  
Weddings, Funerals, Christenings,  
Birthday Parties,  
Canape and Dinner parties,  
Corporate events and Barbecues*

### **CAKES FOR ALL OCCASIONS**

Contact Helen  
01473 806398  
[info@angel-delights.com](mailto:info@angel-delights.com)  
[www.angel-delights.com](http://www.angel-delights.com)

## Stuart Walker

**Decorating, Painting & Refurbishments**



**A locally based company offering an honest and reliable service**

**Painting - Decorating - Refurbishments - Repairs**

**All work considered indoors & out! Fully Insured & free quotations provided**

Please contact Stuart on Tel: 07711 606464 or 01449 740387

Email: [stuma1@hotmail.co.uk](mailto:stuma1@hotmail.co.uk)

## Constable Country Property Maintenance

General Maintenance, Carpentry, and kitchen fitting.

Lee Caley

8 Blenheim Meadows  
Nedging Tye, IP7 7GA

07944 246644

leecaley.lc@gmail.com



## GIDNEY PLUMBING & HEATING

Tap Changes, Ball Valves, Shower Pumps,  
Water Softeners, Hot Water Cylinders,  
Bathroom, Wet room & Kitchen Installs,  
Radiator & Valve Replacements,  
Underfloor Heating, Heating System Repairs,  
Renovation & New Builds.

**24 Hour Emergency Cover**  
**Professional & Reliable Service**

**07534525263**  
**01449 258254**

**gidneyph@outlook.com**  
**www.plumbinginsuffolk.com**

## **\*\*Pilates and Yoga classes now at Kersey Mill\*\***

If you want to exercise both your body and mind as well as improving your sense of well-being, strength, flexibility and mobility then Pilates is for you! We are passionate about bringing the benefits of Pilates/Yoga to everyone and with a highly qualified team of instructors we can certainly help you improve muscle tone and core stability, building strength from the inside out, re-balancing the body and bringing it into correct alignment.

### **BEGINNERS CLASSES AND FREE TASTER SESSIONS\* ARE NOW AVAILABLE AS WELL AS PRIVATE 1:1's**

*\* on selected classes*

We now offer small Yoga classes too to add to your well-being experience at Kersey Mill. Please get in touch if you would like any more information.

Whether you are new to Pilates/Yoga or have been enjoying the benefits for years, we feel confident that we can accommodate your needs to achieve results.





D'ENZA



HAIR & BEAUTY SALON at  
"KERSEY MILL"

# "July Offers"

**1: Holiday Special Offer ~ Luxury Manicure & Pedicure with ½ leg & Bikini wax.**

**Special Price of only £55 with gels £75**

**2: Relaxation offer~ Hopi Ear Candling Treatment with a back, neck & shoulder massage**

**Special Price of only £40**

**3: Reflexology & Sports Massage available on certain days-**

**Special Price of only - 30mins £35 - 45mins £45**

**4: The new Zone Face Lift~ a natural & kinder anti-ageing facial treatment as effective as Botox. (12-week course offered by Gaynor)**

**Amy, Hayley & Sarah are taking bookings for hair - Please call 07547488587.**

The above offers cannot be used with another offer & used in this month.

Please telephone for more information or make a booking on: **01473 829069**

Email: [emmaspraggon@yahoo.co.uk](mailto:emmaspraggon@yahoo.co.uk) or visit us on Facebook or Twitter for our special offers.

For opening times & brochure please look at our website: [www.denzahairandbeauty.com](http://www.denzahairandbeauty.com)



Unit 1 Church View, Kersey Mill, Kersey, Ipswich, Suffolk. IP7 6DP.

# THE FLOWER SHOP

*Your local independent florist*

Creating beautiful  
arrangements for  
all occasions using  
only the freshest,  
seasonal flowers

Visit us in store  
to view our flowers,  
plants and  
homeware items,  
or order by phone  
or online

Local and nationwide  
deliveries

• ESTABLISHED 2013 •

[www.theflowershopkm.com](http://www.theflowershopkm.com) THE FLOWER SHOP AT KERSEY MILL Near Hadleigh IP7 6DP 01473 805156

## Andrew Bingham

INDEPENDENT FUNERAL SERVICE

### Caring, family run funeral service

*Small enough to care,  
Large enough to cope.*

[www.andrewbingham.co.uk](http://www.andrewbingham.co.uk)

*Award winning 24 hour personal service - qualified & experienced*



Bereaved Young

Golden Charter  
Funeral Plans



Friends in Bereavement  
Support Group



**01449 771666**

The Nutshell, Milton Road South,  
Stowmarket, Suffolk IP14 1EZ



**BILDESTON w WATTISHAM,  
WHATFIELD w SEMER, NEDGING & NAUGHTON**

**SERVICE SCHEDULE – JULY 2018**

<b>July 2018      NB – Services in bold are Benefice Services</b>			
1 <sup>st</sup> July	11 am	Morning Prayer	Bildeston
8 <sup>th</sup> July	11 am	Holy Communion	Bildeston
<b>22<sup>nd</sup> July</b>	<b>11 am</b>	<b>Benefice Holy Communion &amp; Patronal Festival</b>	<b>Bildeston</b>
5 <sup>th</sup> August	11 am	Morning Prayer	Bildeston

## Baptist Church, Duke Street, Bildeston

**Jim Haley tel: 01449 740716 email: bildestonbc@gmail.com**

**Service every Sunday morning at 10:45**

**Lunch Club: at 12:30 on the first Wednesday of each month –**

All are most welcome

**Community Coffee Centre: Every Friday from 09:15 to 11:30am**

Enjoy meeting old and new friends at these events!

**‘Craft it Together’ - First Monday of each month at 7:00pm.**

Bring along your craft activities and join us for an informal, relaxed evening share ideas, gain new skills or just enjoy doing your own thing

Drinks provided.

**01449 740716 or 01449 741606 for more information**

**Strollers and Striders**

Every Monday 10.00am from the car park

**‘Men’s Breakfast’ - last Saturday of each month at 8am**



### **Bildeston Community Coffee Centre**

Baptist Church 9:15-11:30 ..... **Every Friday**

### **Lunch club**

Baptist Church 12.15 for 12.30pm start.....**1st Wed every month**

### **Craft it Together**

01449 740716/741606 for details.....**1st Monday every month**

### **Strollers & Striders**

Baptist Church Car Park 10.00.....**Every Monday**

### **Bildeston Contemporary Choir**

Bildeston Primary school 7.00pm.....**Every Monday during school term time**

### **Baby & Toddler Group**

Baptist Church 9.15 to 11.30.....**Every Tuesday**

### **Bildeston Community Cycle Ride**

Market Square 6.45pm.....**Every Tuesday**

### **Mens Breakfast**

Baptist Church 8.00am.....**Last Saturday every month**

### **Ladies Club**

Meet at Kings Pightle 7.30pm.....**Thurs 5th**

### **Bildeston Indoor Market**

Chamberlin Hall 9.30am - 2.30pm.....**Sat 7th**

### **Bildeston Contemporary Choir Concert for FOBS**

Chamberlin Hall 4.00pm.....**Sun 8th**

### **Parish Council Meeting**

Chamberlin Hall 7.30pm.....**Wed 11th**

### **Caribbean Night!**

Chamberlin Hall 7.30pm.....**Sun 15th**

**NHS Tea Party Bildeston Surgery 2.00pm.....Wed 18th**

### **Bildeston Cycling Festival**

Sportsfield from 8.30am.....**Sat 21st**

Please tell us about your forthcoming events in **August**

email: [editor@bildestonbugle.co.uk](mailto:editor@bildestonbugle.co.uk)



When you're finished with this Bugle please pass it on or recycle it.