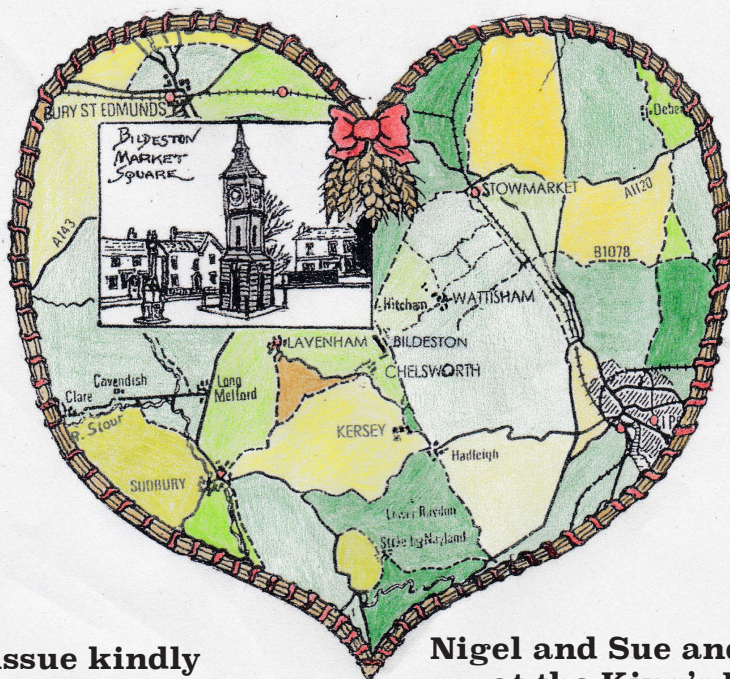


Issue number 331

May 2018



**This issue kindly
sponsored by -**

**Nigel and Sue and family
at the King's Head
Home of the
30th Bildeston Beer Festival
25th to 28th May**



Saint Mary's Church, Bildeston, Suffolk.

The village magazine produced for the people of Bildeston



BILDESTON BUGLE ADVERTISING AND FREE CONTRIBUTION INFORMATION

Our aim is to provide every resident in Bildeston with a magazine which provides information of local interest FREE OF CHARGE. To that end we are required to be efficient in the space we use to print free notices. We endeavour to include interesting items, announcements for events open to the general public for free and items of a charitable nature free of charge. Ongoing free announcements need to be reduced to minimum size or make a contribution towards printing costs. Please check with us before submitting your advert and ALWAYS provide us with all of your contact details in order for us to send a receipt.

email: editor@bildestonbugle.co.uk

Sponsor a 'Bugle' – £15 per issue

includes a brief message of your choice on the cover of the magazine

Advertising Rates

	1 issue	12 issues (30% disc)	
1/4 page	£3.00	£26.00	65mm W x 92mm H
1/2 page	£6.00	£50.00	134mm W x 92mm H
Full page	£12.00	£100.00	134mm W x 190mm H

THE SMALL PRINT

All adverts, payments and items are required before the 17th of the month for inclusion in the following month's issue (except December).

The earlier free contributions are received the greater the chance of inclusion.

Please make cheques payable to Bildeston Bugle and send to:

The Editor, Bildeston Bugle, 14 Squirrells Mill Rd, Bildeston IP7 7DY

Receipts cannot be issued without your full postal address.

If we do not receive payment by the 17th of the month your advertisement may NOT be included

The Bildeston Bugle Management Team is:

Alan Jacobs (Editor) 01449 741645

Tricia Baldwin (Marketing & Advertising Revenue)

Christine Hubbard (Treasurer) 01449 740633

Stuart Law (Assistant Editor)

Alison Sims (Assistant Editor)

ED'S COMMENT

May 2018 is National Share a Story month. The Federation of Children's Book Groups is celebrating the power of old fashioned story telling. Suffolk is full of ancient stories, none arguably, more famous than the Green Children of Woolpit; the local Suffolk story that fits in the 'strange but true' category and commemorated to this day in their village sign.

The story began in the reign of King Stephen, during a very turbulent time in England's history in the mid 12th century. Stephen's reign was marked by the Anarchy, a civil war with his cousin and rival, the Empress Matilda. Woolpit (or to give it its Old English original name, wulf-pytt) is named after, yes! an old pit for catching wolves! Right next to their wolf pit in around 1150, a group of villagers stumbled across two young thin children with strange green skin, clinging together in fright and speaking gibberish. According to writings at the time by Ralph of Coggeshall, the children, a brother and sister, were taken by the villagers to the nearby home of Sir Richard de Calne where he tried to give them food which they repeatedly refused to eat. This continued for days until the children found some green beans in Richard's garden which they ate straight out of the ground. With no idea where they came from or any family, the children lived with Richard de Calne for some years. Over time he managed to get them to eat normal food. According to the writings, the change in diet gradually led to the children losing their green complexion. The children also learnt to speak English, and were then asked where they had come from and why their skin was once green. They explained: *"We are inhabitants of the land of St. Martin, who is regarded with great respect in the country where we were born. We don't know how we arrived here; we only remember that on a certain day, when we were feeding our father's flocks in the fields, we heard a great sound, such as we now hear at St. Edmund's abbey, when the bells are chiming; and while listening to the sound, we suddenly found ourselves among you in the fields where you were working. The sun does not rise upon our countrymen; our land is little cheered by its beams; we are contented with that twilight, which, among you, comes before the sun-rise, or follows the sunset. Moreover, a certain shimmering country is seen, not far distant from ours, and divided from it by a very big river."*

This explanation only served to deepen the mystery, and fuel the story that the children had emerged from the wolf pit deep underground! Soon after this Richard de Calne took the children to be baptised in a local church. The boy died soon afterwards through an unknown illness. The girl, later known as Agnes, continued to work for Richard de Calne for many years and later married the archdeacon of Ely, Richard Barre.

The villagers never understood the children's explanation, it remained a great mystery and, although the facts of the children's discovery were well known and written down, the story quickly passed into Suffolk folklore and has been shared for the past 800 years!

So who might the green children of Woolpit been? The most likely explanation is that they were children of Flemish immigrants or mercenaries who fought with King Stephen and had been persecuted or possibly killed by Matilda's forces. Lost, confused and without their parents, the children somehow ended up at Woolpit speaking only their native language, Flemish, which is why the villagers thought they were speaking gibberish. The green tint to the children's skin could be explained by serious malnourishment, or more specifically 'green sickness'. This theory is supported by the fact that their skin reverted to a normal colour once Richard de Calne had managed to get them to eat real food. The children of Woolpit is a true story, but to this day no-one knows how they got there!



HONEY BEE'S NURSERY

Hitcham Village Hall, Hitcham, IP7 7NE

FOR CHILDREN AGED 2 – 5 YEARS

Open Mon, Wed, Fri 9.15a.m. – 12.15p.m. or 3.15p.m.

Tues, Thurs 9.15a.m. – 12.15p.m.

Early Drop Off – 8.15a.m. Lunch Club Daily until 1.15p.m.

2 Indoor Rooms and Outdoor Areas

Ofsted Registered

**Early Years Funding accepted for all 3 & 4 year olds
With 30 hrs funding available from September 2017**

Contact: Sharon Scarfe 01449 740764 (hall) 01449 740581 (home)

Or visit honeybeesnursery.co.uk

**WANT TO LEARN TO PLAY
GUITAR, BASS, DRUMS?**

***MANY CONTEMPORARY STYLES COVERED, INCLUDING
ROCK, METAL, POP, INDIE, BLUES, FUNK AND MORE.***

KEYBOARDS, VOCALS, SONG AND LYRIC COMPOSITION

MOBILE DIGITAL RECORDING SERVICE AVAILABLE



ADAM KEETON

GOOD COMPETITIVE RATES

01449 744530 OR 07914 798374

FULL DBS + PROJECT LEADER WITH AMPLITUDE



Bildeston Primary School

We are looking forward to an exciting summer term ahead. We have a lot to organise, since many children in both schools are undergoing SATs testing of one sort or another. As usual we are determined to make sure stress is limited for the children involved.

One thing they enjoy is a SATs breakfast which is a chance for the pupils to get into school and have a sociable meal together prior to their tests.

Quite apart from that, we are taking our year 5 and 6 pupils from both Bildeston and Whatfield on a residential trip in May, travelling to African Adventure at Sizewell and will be learning a huge range of new skills, such as Archery, Bridge Building and Mine Clearing! There is a huge emphasis on team building and we know that the children will get to know each other well before some of them move on to high school.

We are also delighted to say that our Early Years area has been enhanced by a low climbing frame, water and a pulley activity funded from the national lottery. Let's hope that the April showers soon move into a bright and sunny summer.



During the summer term our early years children will take the opportunity to make good use of our outdoor classroom, hopefully with some much warmer weather! They enjoy a variety of forest schooling activities including; bug hunting and making shelters. They also learn to use lots of skills during this time and have lots of fun!

Other activities and events this term include Samba Drum Workshops, Castle Themed Day, Mayan Themed Day, Sports Events, Enrichment workshops (DT/Maths/Zumba/Drama/First Aid), visits to Bradfield Woods, Healthy Lifestyle Programme, Art Curiosity Café, visit to Hollow Trees Farm, Imagination Station Workshop and class assemblies so the children have lots to look forward to.

PTFA News

Date for your diary: Saturday 7th July PTFA Summer Fair (12 noon – 3.00pm)

We hope to see lots of our Bildeston community at our annual event.

If you are considering Bildeston Primary as a school for your child, we would welcome a visit. Please phone the office on the number below. We would love to meet you.

Bildeston Primary School
Newberry Road, Bildeston, Ipswich, Suffolk, IP7 7ES
Telephone: 01449 740269
Website: www.bildeston.suffolk.sch.uk



The New Chamberlin Hall Management Committee

We would like to thank everyone who has supported and encouraged us over the last year. It has been a very busy time but your help has made it so much easier and we've had great fun along the way.

We have over 30 volunteers that help with gardening, refreshments, cake baking, maintenance, costume making and so much more.

Since our appointment in June 2017 our primary aim was to make Chamberlin Hall a community hall where people could come and relax, play, exercise and feel part of this wonderful facility. We are well on our way to achieving this with the formation of a badminton club, Indoor Market once a month, Pilates classes, Keep Fit classes, children's soft play hour, social nights and open days.

We have re-decorated, repaired and replaced so the hall is looking and feeling fresh and inviting.

We still have many plans for the very near future. You can hear about those and all the exciting things we have been up to at our **AGM on Thursday 14th June**.

CHAMBERLIN HALL

1940'S DRESS
OPTIONAL



**NEEDS
YOU**

1940'S DANCE

AND

COMEDY PRODUCTION

BY THE VIP'S

MUSIC PROVIDED BY
THE UMBRELLA BAND

MAY 5TH 7.30PM

TICKETS £10.00

TELEPHONE: 01449 740375



**SATURDAY
2ND JUNE**

**INDOOR
MARKET**

9.30am – 2.30pm



**MONTHLY
INDOOR**

MARKET

CHAMBERLIN
HALL

BILDESTON

IP77EX

CAKES

BREAD AND PIES

SPICES

PICKLES AND
JAMS

JEWELLERY

SCULPTURES

CRAFTS

REFRESHMENTS

AMPLE PARKING

CHILDRENS
PLAYGROUND

BILDESTON CHAMBERLIN HALL

What's on in May



Every Monday 8.00pm to 10.00pm Badminton Club, Table Tennis & Darts

Everyone welcome, please remember to wear white soled trainers, not black.

Every Monday	10.00 to 11.00pm	Toddlers Play Session
Every Tuesday	1.30pm to 2.30pm	Keep Fit with Callum
Every Tuesday	from 7.00pm	Snooker Club
Tuesday (practice night & home games)	7.15pm	Carpet Bowls
Every Thursday	11.00am – 12.00	Zumba Gold with Sarah
Every Thursday	7.30pm to 9.30pm	Music Youth Group
Thursday 3rd	7.30pm	Ladies Club
Saturday 5th	7.30pm	1940's Dance
Every Friday	6.00pm	Friday evening outdoor bowls
Every Friday	11am to 1.00pm	Pilates

Except last Friday of the month when it is Bingo

Village Independent Players
invite you to an **Open Evening**
on **Wednesday May 23rd 7pm**
at Chamberlin Hall.

If you would like to be involved
in our drama group as an
actor, director, backstage crew,
scenery/prop designers, costume
designers, music and lighting
crew, please come along to have
a chat, a drink and a few nibbles!
For more information contact
Debbie Bailey 01449740375
Look forward to seeing you.

**CHAMBERLIN HALL
MANAGEMENT COMMITTEE
INVITE YOU TO OUR**

A.G.M

ON

**THURSDAY 14TH JUNE
AT 7PM**

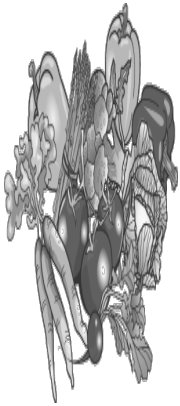
At Chamberlin Hall

Come and see what we have been doing over
the last year and hear our plans for the
future.

Complimentary tea, coffee and biscuits.

Bar will be open.

CHAMBERLIN HALL - YOUR COMMUNITY HALL



BILDESTON

ALLOTMENTS

Have you ever thought
of growing your own
vegetables and flowers?

There are currently vacant plots, both full size and half size. Water is available on site, and the rents are reasonable.

If you are interested, please contact:

Robin Weaver, 741048, or Ashley Hubbard, 740633

Gardener

Tackling tasks -

Herbaceous, Shrub & Rose management

Lawn & Hedge maintenance

Planting - Design - Installation

A high standard of work, references & portfolio

Weekly - One-off - Seasonal duties

Hand-crafted HortSupports

Combs, Suffolk

Fred Waters - 07788 523146

CPH Property Services

Painting & Decorating (Interior & Exterior)

Fencing

Patios, Pathways & Shed Bases

Plaster Boarding & Tiling

And much more.....

Fully Insured & Free Quotations Provided

Telephone Chris: 01787 210536 or 07717059370

Telephone Paul: 01449 740020 or 07880727630

Email: chris.harman1990@gmail.com



COUNTRYSIDE OBSERVER



Country observer has not been cancelled by the recent poor weather, and beyond my window it's pleasing to see that the blackbirds are retaining their daily flight schedules, and their colour!

Recent poor weather?!! We saw the most snow I have seen in the 14 or so years since we moved to Bildeston thanks to the beast from the east. There are times when I wish the Bugle ran to colour pictures as some of the snow sculptures I photographed on my walks around the village were spectacular. It was great to

be up early trading virgin snow where only animals had passed by and no human foot prints apart from mine. But it's now feeling almost tropical. My outside air temperature showing PLUS 0.2 degrees C.!

The Cuckoo will soon be heard in our woods and hedgerows, but what do we know about this mystical bird? The Cuckoo is dove-sized with blue grey upper parts, head and chest with dark barred white under parts. With their sleek body, long tail and pointed wings they are not unlike kestrels or sparrowhawks. Sexes are similar and the young are brown. They are summer visitors and well-known brood parasites. The female Cuckoo will not build her own nest, instead finding a host nest with eggs already laid then laying her egg in the nest. They are crafty birds observing the host next from a distance and will swoop in when the nest is unattended, ejecting the host birds own eggs or hatched chicks leaving just their single egg. Meadow pipits, dunnocks and reed warblers are the species that Cuckoos appear attracted to and their recent population decline makes this a red list species.

The host bird is tricked into raising the Cuckoo chick as if it was their own, often an exhausting task due to the huge size of the growing Cuckoo chick and its voracious appetite compared to their own chick. In flight, the Cuckoo can be easily mistaken for a Sparrowhawk or Kestrel because it has swept-back wings and long tail. However, Sparrowhawks do not have pointed wings like the Cuckoo, and the Kestrel is streaked and not barred on the underparts. When perched, usually in the open at the top of a tree, the Cuckoo drops its wings below the level of its tail. The best places to see Cuckoo are grassland, reed beds, and edges of woodland.

Nature is about to entertain us with wonderful displays of wild flowers this spring. I particularly love to see the Primroses followed closely by Cowslips which always remind me of my Dorset childhood. Cowslips not only adorn pastures and banks but they are a nostalgic symbol of the once flower-rich pastures of rural England. The cup-shaped flowers grow in nodding clusters on tall stalks. The leaves are oval with relatively wrinkled edges similar to the Primrose, but they narrow abruptly into the stalk. Cowslip numbers declined dramatically between the 1950s and the 1980s. Its preferred habitat is open grassland either slightly alkali or neutral in nature. It also requires a generous amount of light in order to flower and is not successful in woodlands or under tall plants. The cowslip is a must for almost all non-acidic open grassland sites. The plant forms a key component of spring flowering grasslands and can be used to create cowslip meadows in ordinary turf grass. It can also be planted at the front of herbaceous borders. That's it, I'm going back into hibernation.. **Mike Biddulph**

BASE GARAGE LTD

MONDAY – FRIDAY 7.30 – 6.00

SATURDAY 8.00 – 12.00

- TYRES
- EXHAUSTS
- PUNCTURES
- BATTERIES
- WHEELBALANCING
- AIR CONDITIONING
- LATEST DIAGNOSTIC EQUIPMENT
- WELDING TO MOT STANDARD
- SERVICING & ALL REPAIRS TO ALL MAKES OF CARS
& LIGHT VANS FLEET DRIVERS WELCOME
- MOT CLASS 4, 5 & 7
- COURTESY CAR AVAILABLE
- COLLECTION & DELIVERY SERVICE 5 MILES RADIUS
OF GREAT BRICETT
- WINTER CHECKS
- HOLIDAY CHECKS

£10 OFF!

***YOUR MOT WITH THIS
ADVERT***

LOWER FARM ROAD, GT BRICETT, IPSWICH IP7 7DR

01473 658987 / 01473 657704

Bildeston Village Stores and Post Office

Tel: 01449 740248

Summer Opening Hours

Monday 26th March – Saturday 30th September

Monday – Saturday 7.00am – 8.00pm

Sundays & Bank Holidays 9.00am – 5.00pm

Village Stores

Monthly Londis promotions

Everyday provisions

Freshly baked bread and croissants

Fresh fruit and veg

Local ham, bacon and sausages

Bildeston Honey

Hot food and drinks to-go

Logs, coal and kindling

Cards, gift wrapping, stationery supplies

Newsagents and off-licence

Post Office (Open as above)

Postal services - Parcel Force

Cash deposits and withdrawals via chip and pin

(All main bank cards)

Postal orders

e top ups and bill payments

Foreign currency to order

Lottery

Studio 66

Ladies and Gents Hairdressers



Restyling

Foils & Highlights

Perms & Colours

Shampoo & Sets

Cut & Blow Dries

Friendly Service from our Professional Team

Tue & Wed Senior Citizens

*****special rates *****

Opening Times Tues - Friday 9 - 5 pm Sat - 8 - 1pm



Tel 01449 740644

52A High St Bildeston IP7 7EA

Bildeston Ladies Club

We had a fantastically entertaining evening in April with our visitor; The Essex Scrubber. Despite this title, Christine proved to be an elegant lady, a proficient speaker



and a great example of what women can achieve. Her business was founded out of necessity, when she was struggling to support a young family. She went on to run one of the first cleaning companies to raise the standards and profile of these valuable workers. Her first big contract was the daunting task of cleaning the Willis building in Ipswich, which I'm sure is known to all of us. Christine's successes led to her being given many awards including an MBE. She has written books about her experiences and was able to convey such a sense of joy with her talk, not least of all when poking fun at the traditional view of the Essex girl!

On May 3rd we will hold a very short AGM and decide on our timetable for the year ahead and our next chosen charity. Please bring along any suggestions.

We have invited the representative from SARS to join us to give a talk and we will present our fundraising cheque for this year.

Once the business of the evening is concluded we will enjoy "bring and share" refreshments.

Thursday May 3rd - hall open at 7:30 p.m. for our meeting to start at 8:00 p.m.

All welcome!

Chairlady - Jo Silburn - 01787 204184

Secretary - Jean Radley - 01449 743650

FUND RAISING COFFEE MORNING & PLANT SALE

At Malham, 36 High St, Bildeston

*On Thursday 10th May from 10am until Noon
In Aid of St Mary Magdalene Church, Bildeston
Everyone Welcome*

COUSINS & SON BILDESTON LTD

available to carry out all your building requirements
from

Renovations / Alterations / Extensions to General Repairs

Please contact Paul for a free estimate

01473 658919 or 07876 244461

or email paul.cousins268@btinternet.com



Paul's Carpentry

**All Carpentry projects considered large
or small**

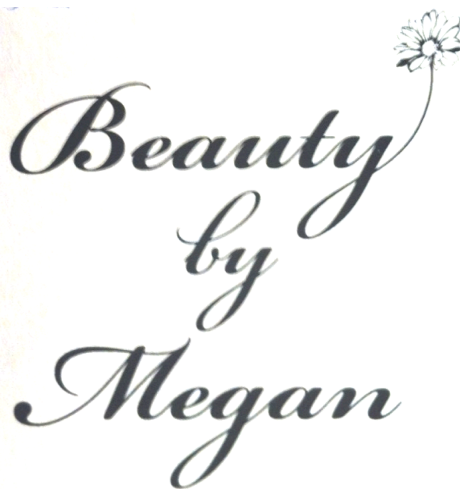
**Decking, Garden Rooms, Wardrobes,
Shelving, Children's play houses and
tree houses.**

Mobile: 0779 234 0365

Tel: 01449 616 888

email: paulhb100@gmail.com

www.carpentryservicesinsuffolk.co.uk



Beauty by Megan

Megan is a mobile Beauty Therapist with over 13 years experience in the Beauty Industry. Offering professional and thorough treatments in the comfort & convenience of your home. Alternatively I welcome appointments at my log cabin in Hitcham. My log cabin is in a peaceful, rural location and benefits from off-road parking!

A variety of treatments include:

Dermalogica facials/Spray tanning/Waxing/Eye treatments/Jessica manicures & pedicures/Jessica Gel Nails/Foot health maintenance (nail trimming & hard skin removal)
LVL Eyelash perming/Reflexology

Covering the heart of beautiful Suffolk.
Please phone for any enquiries or for a full price list.

Megan Pryke VTCT, BABTAC
07876 717 008

The Bildeston KINGS HEAD

Pub & Brewery

Presents the 30th Annual

BEER & MUSIC FESTIVAL

Friday 25th to Monday 28th May 2018

**Featuring over 30 real ales & 7 ciders from East Anglia,
great home made food and live music all weekend with:**

Friday 25th Open 4pm, “The Roosters” 9pm

Saturday 26th Open 12pm, Y&UCME Session 1pm onwards

Saturday 26th, “Don’t Tell The Wife” 6pm

Saturday 26th, “The Glamtastics” 9pm

Sunday 27th Open 12pm, Open Mic Afternoon 1pm onwards

Sunday 27th, “Meddle” 6pm

Sunday 27th, “BUZZ” 9pm

Monday 28th Open 12pm, “The Selion Swing Band” 1pm

Monday 28th, “The Onion Band” 6pm

For more detail call Nigel or Sue on 01449 741 434



KINGS HEAD & Brewery

Nigel, Susie, Ryan, Freya and the Kings Head team look forward to welcoming you to the Bildeston Kings Head.

www.bildestonkingshead.co.uk

- Our annual **Beer & Music Festival** starts **4pm Friday 25th May** to **Bank Holiday Monday 28th May**. For more detail please see our other advert in this Bugle...
- Our other **free live music** for **May**: every **Wednesday** is **Open Mic Night** from **8:30pm**; and from **9pm** on **Saturday 12th Joe Orchard & Friends** will liven up your Saturday...
- Thursday is bar games night, there's all the usual plus **Poker, Skittles** and **table top football, snooker & tennis**. **Open Deck/Vinyl night** is **17th May**. **Charity quiz night** is **31st May** at 8:30pm, please arrive by 8pm. To book a quiz table telephone Sue/Nigel on 01449 741 434. A huge thanks to March's quiz teams who raised **£110** for **EACH**.
- Our good value homemade food uses quality ingredients that are locally sourced where possible. We are well known for tasty beer-battered fish & chips, delicious boozy beef pie and traditional Sunday roasts. Meals are cooked to order, available to eat-in or take-away and in child sized portions. To reserve a table phone **Sue or Nigel on 01449 741434**.
- We brew our own real ales on-site (tours by arrangement) with at least one other from a local independent brewer.
- Our opening and food times are as follows:

Wednesday	Open 6pm-12am (open mic/buskin night)
Thursday	Open 6pm-11pm (bar games night)
Friday	Open 4pm-12am (full menu 5-9pm, T/Away 5pm)
Saturday	Open 12pm-12am (full menu 12-2pm & 6-9pm)
Sunday	Open 12pm-10:30pm (roast/Sunday menu 12-3pm)

PAINTING SERVICES

Rob Harrison

Painting & Property Maintenance

Tel: 01449 741041

Mob: 07852 795469



Green Farm Vintage China

Hire

A large range of pretty vintage china and glass to hire for all occasions, including tea parties and weddings.

With every order 20% will be donated to the charity of your choice.

For more information, please contact

Carole Homer:

Tel: 01449 741498

Mobile: 07879265756



Email: carole.homer@btinternet.com

Dentist

Paul Rolfe BDS

Veneers & Crowns in a
single visit

Dental Implants

Family Dentistry

**Lavenham &
Long Melford**

01787 882722

www.paulrolfedental.co.uk



The Ipswich Hospital Charity are excited to announce the **“Masquerade Charity Ball”** at **The Venue at Kersey Mill** on **Friday, 22 June 2018** at 7.00 pm in aid of the Blossom Appeal. This glamorous evening will include a night of live entertainment with a drinks reception, a three course meal with wine in a beautiful location. Ticket price is £50 per person. **J.S and The Lockerbillies** will be our band for the night who have previously played at Glastonbury! So get your dancing shoes ready to ‘Rock ‘n’ Roll’!

All money raised will go towards The Ipswich Hospital Charity, supporting the Blossom Appeal. Help us build a new £2.5 million Breast Care Centre at Ipswich Hospital where every breast care patient can have the best possible experience when they come to hospital. The new centre will bring all elements of breast care at The Ipswich Hospital under one roof and provide an environment where patients can be imaged, biopsied where necessary, and see their clinician in one appointment without the need to get dressed and undressed several times. There will also be new dedicated clinics for men and young people.

Your support can help patients like Jo.....

“There is a lot of getting up and down and walking to and from for imaging and treatment, and it’s a very impersonal space.”

Former breast cancer patient Jo Whitelaw remembers the experience of visiting the hospital all too well. But the now 55-year-old also remembers the “amazing” care she received. She said: “The hospital was my security blanket. I got all the support and reassurance I could’ve asked for from the team. They were always there when I needed them.”

Jo, from Great Blakenham, was diagnosed with breast cancer in 2012 after discovering a lump in her breast. Initially she thought it was benign as she’d had others removed in the past. But it did turn out to be cancerous. When the lump was removed cancer cells were still found so Jo went on to have her breast removed and gruelling chemotherapy and drug treatment to fight the disease. She said: “It’s a very open and impersonal space. I remember when I first went to hospital I sat there and looked at all the people in the waiting room and felt very alone. The new centre could be more personal, but then there would be opportunities and spaces to talk if people wanted to.” Jo, married with two children, four grandchildren (and another on the way) has now been clear of cancer for five years. While the hospital team were Jo’s security blanket, she turned to the animals in her yard to relax. A keeper of horses, sheep and chickens, Jo credits them to helping her relax both during and since her cancer.

Help us build a new Breast Centre at Ipswich Hospital whilst enjoying a glamorous night.

To purchase tickets please visit www.ipswichhospitalcharity.co.uk contact 01473 702929 or email at: charity@ipswichhospital.nhs.uk



BARGEWELL SKIP HIRE

2 - 8 yard skips
1 ton waste bags
We also collect any full waste bags

Long or short term hire
Delivery 7 days a week
Fast & friendly service

Stowmarket 01449 615056

Mobile: 07770 452378

High Rd, Gt Finborough, Stowmarket, Suffolk
www.bargewellskiphire.com
Credit cards accepted

CHIMNEY SWEEP

ECO SWEEP CHIMNEY SERVICES

NEW POWER SWEEPING METHOD USED
FOR A MORE THOROUGH CHIMNEY CLEAN
THAN BRUSHES.

INDUSTRIAL HEPA FILTERED VACUUM.

FULLY INSURED.

INSURANCE RECOGNIZED CERTIFICATES ISSUED.

SPOTLESS, RELIABLE AND FRIENDLY SERVICE.

ALL CHIMNEYS, WOOD BURNERS, AGA, BOILER

FLUES SWEEP.

GUILD OF MASTER SWEEPS CERTIFICATED MEMBER.



TEL. 01359 232335

BILDESTON COMMUNITY CYCLING
HAVE YOU GOT A BIKE IN THE SHED?
WHY NOT JOIN OUR
TUESDAY EVENING RIDES

From 24th APRIL, then every Tuesday. They all leave at 6.45pm from the Market Square, and last about an hour. There will be two groups of riders.

A SLOW RIDE, starting at 6 to 8 miles, specifically for new and returning riders, at a speed to suit the riders. Walking on hills is definitely allowed, and no Lycra is necessary!

A REGULAR RIDE of 15 miles for more confident riders.

If you used to cycle, or want to start, why not join us this year?

Just turn up at the Market Square. Warm clothing and lights may be needed!

If you have any queries, please contact Robin Weaver on 01449 741048.

We regret no children under 12, no unaccompanied children under 16.



Dan Brown

Your local professional Electrician

Web: www.saveelectrical.co.uk

Phone: 07731 67 27 57

Email: dan@saveelectrical.co.uk


Over 15 years of experience to provide you with a friendly, professional and competitive service

Based in Rattlesden. All Aspects of Electrical Work Undertaken, including: Installation, Repair and Maintenance, Test and Inspect, Home Theatres, Smart Technology, Security

NIC Approved Installer, 17th Edition, Part P Qualified and Insured

SAVE Electrical can save you money on your electricity bill. By Changing your 50w downlights to Integrated LED downlights we can save you up to £15 per year per light in energy bills. Costing from £30 per light to supply and install, you will have paid for it within 3 years... and done your bit to stay green.





A&L Roofing (suffolk) Ltd

Steven Allum
Jamie love

Specialising in Re-roofing, Repairs,
Flat roofing & all types of Lead work

Contact. Jamie 07547594699
Steven 07545071147



The Grooming Lounge

**A full grooming service
for your dog**

Ipswich • Stowmarket • Bury St. Edmunds

Grooming Lounges located at:

Ipswich Veterinary Centre	Stowe Veterinary Centre	Moreton Hall Veterinary Centre
Tel: 01473 555 000	Tel: 01449 776 216	Tel: 01284 747 000

The Vegetarian Red Lion

***Under new management and
offering an exciting new menu!***

Located in Gt Bricett, IP77DD

Dogs Welcome!

***Tel: 01473 657 863
www.vegredlion.co.uk***





Upbeat Contemporary Choir

Our group is:

Fun.....Inspiring.....Exciting

In a Word - UPBEAT!

Pop, Jazz, Reggae, Easy Listening, Folk,
Songs from the Shows and Musicals,
Classical, Blues.....

So come & join the choir - Mondays in term
time 7-9pm at Bildeston Primary School.

To find out more call Andrea
on 01449 740601 / 07778576534 or
a.king00@btinternet.com

We look forward to seeing you there.
Why not come next Monday and see how
you get on?

Director and Pianist Andrea King presents



UPBEAT CONTEMPORARY CHOIR

IN CONCERT RAISING FUNDS FOR

FRIENDS OF BILDESTON SURGERY



Tickets include a
delicious afternoon
tea

Sunday 8th July 4.00pm

Chamberlin Hall, Bildeston

Tickets: £8 adults / £3 children

For tickets contact Andrea King on 01449 740601 or
a.king00@btinternet.com



The
179th

HADLEIGH SHOW

Saturday 19th May 2018

Holbecks Park Hadleigh IP7 5PE



Info and tickets
available online

TICKET PRICES:

Early bird discount: On gate:

Adult	£10	£13
Child (5-16yrs)	£5	£7
Senior citizen	£8	£11
Family (up to 3 children)	£25	£30

Gates open 8am Free parking

www.hadleighshow.co.uk

QUIZ NIGHT

with bar

at the Sports Field Bildeston
in aid of

BNatural

Bring a team of up to 8 people and head to the
Sports Pavilion on the 12th May at 7.30pm.

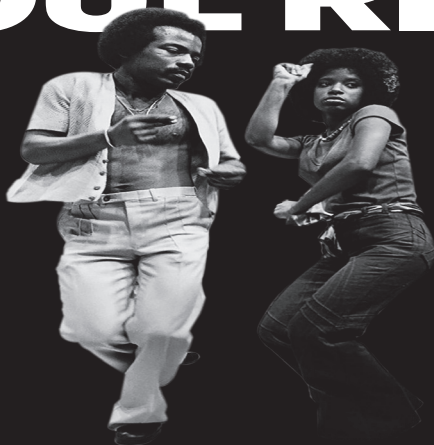
Tickets are £5 per head - for more info or to book
your tickets contact:
Leigh on 01449 744407 or 07825 290605

All profits on the night go towards this years festival -
September 7th, 8th and 9th

BNatural Fundraiser

featuring

SOUL RIOT



June 16th, 7.30-11.00
Chamberlin Hall, Bildeston

Tickets £7.50 all profits to BNatural Bar & Raffle

ANDYS LOGS

Well Seasoned Barn Stored Hardwood Logs

Loads Delivered or Pick Up

Wood cut to size for any Heater

Large bags of wood collection only

CALL ANDY 07881 684687

**Bags of wheat for Chicken feed also available collection only*

J M GARDENING SERVICES

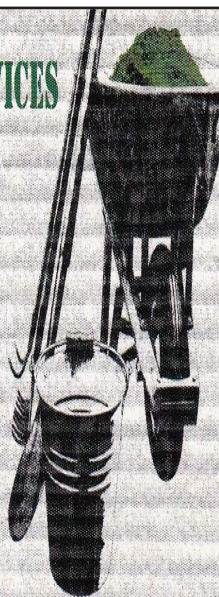
**FOR ALL GARDEN
MAINTENANCE**

NO JOB TOO SMALL

JOHN MORGAN

TEL:07855 855994

johnmorgan007@btinternet.com



Canine Wellbeing At The Pheasantry
Wattisham, Suffolk IP7 7LA

Dog and Puppy Day Creche

We provide a very special service of looking after your dog or puppy. In the comfort of our own home, whilst you are at work, or whilst your dog is recovering from veterinary treatment. Why not allow your puppy to socialise with other canine friends. Daily collection and delivery is available.

Dogs on Holiday

Whilst you are on holiday, why not let your canine friend have one too. She/he can come and stay in the comfort of our own home, where she/he will be treated as one of the family.

Also available

Canine Hydrotherapy

For more details phone:

01449 740659 mobile 07956286056

or visit our website: www.caninewellbeing.co.uk

LAXFIELD HOUSE NURSING HOME

BRENT ELEIGH, Nr LAVENHAM, SUDBURY, SUFFOLK

Situated in a quiet village location with beautiful gardens, offering residential and full nursing care for elderly people.

A highly trained team of nursing sisters and care staff provide excellent nursing care with kindness and compassion, ensuring privacy and dignity at all times.

** Long or short term respite care available **

A warm welcome is always extended to all visitors



All rooms are well appointed with en-suite facilities.
Nurse Call System, Passenger Lifts, Various Public Rooms

This nursing home was established over 25 years ago by the current proprietor and family with ongoing input and management.

**Enquiries to - Mrs J. Carne RGN, RM, (Matron)
Mrs E. P. Knight RGN, RM, Mr N. Knight (Proprietors)**

Telephone (01787) 247340 / 495

**enquiries@laxfieldhouse.co.uk
www.laxfieldhouse.co.uk**



Member of the Registered Nursing Home Association



Karen Finch RHAD FSHAA FRSA

How's your hearing?

**Take the first step towards better hearing and
book a hearing test with The Hearing Care Centre!**

Find us locally at:

The Health Centre, Hadleigh

The Country Practice, Needham Market

StowHealth, Stowmarket

- Hearing tests ■ Latest digital hearing aids ■ Outstanding aftercare
- Earwax removal ■ Custom made ear protection ■ Home visits

To book your appointment call 01473 230330

■ Award Winning ■ Family Run ■ Private ■ Independent ■ Local

hearingcarecentre.co.uk

Recipe of the Month

Fillet of bass with braised oxtail and rainbow chard

with thanks to Chris Lee Head Chef at The Bildeston Crown

Ingredients

- x1 oxtail
- 1 litre good quality beef stock
- 250ml tomato juice
- Mirepoix of vegetables (diced carrots, celery, onion, leeks, garlic, rosemary and thyme)
- 1 tablespoon of tomato purée
- 1 bottle of good red wine
- X 2 sticks of salsify (peeled and cooked in acidulated water to keep white)
- Chicken mousse (blitz one chicken breast with two egg whites and 100ml of cream
- before passing through sieve and chilling)
- X 4 sea bass fillets (200-300g each)
- ½ jar good quality Choucroute or Sauerkraut.
- 200g diced Morteau sausage
- Black garlic purée (Peel the garlic bulb and simmer in full fat milk until tender and then blitz to a purée)
- Rainbow chard (enough stalks to have red, yellow and green leaves on each



Method

- Sear the oxtail in a hot pan until golden brown. Remove the oxtail from the pan; add the mirepoix and sauté until coloured
- Add the tomato purée and cook for one minute. Add the red wine and cook to reduce to a thick syrup consistence. Add the beef stock and tomato juice and bring to the boil
- Return the oxtail to cooking liquor and cook at 120°C until tender. Remove the oxtail, allow to cool so that you can pick the meat from the bones
- Pass the cooking liquor through a sieve and in a clean pan reduce to a thick gravy
- Mix the cooled oxtail meat with the uncooked chicken mousse. Press the oxtail meat mixture flat and put a salsify stick in the middle and roll like a cigar to give the visual impression of the oxtail bone being back
- Steam the oxtail cigar until above 70°C. Chill until required to serve. When chilled cut the cigar into approximately 8cm lengths and reheat in the reduced cooking liquor.
- Pan fry the Sea Bass fillets, skin-side down until the skin is golden brown and the fish cooked three quarters of the way through. Add butter to the pan and turn over the fish cooking the flesh side for less than a minute
- Sauté the diced Morteau sausage and add the choucroute
- Blanch, drain and reheat the chard in butter
- To assemble, dot the plate with black garlic purée, place the bass on top of the choucroute and the oxtail to one side. Scatter the chard leaves over the top and serve with the reduced cooking liquor as a sauce.

COLLINS & CURTIS MASONRY LTD

est. 1925

Memorial Stone Masons

*Dedicated craftsmen who
combine traditional with new techniques*

Bespoke memorials
Additional inscriptions
Restoration and cleaning
Home visits by appointment

01473 250932
www.collinsandcurtis.co.uk



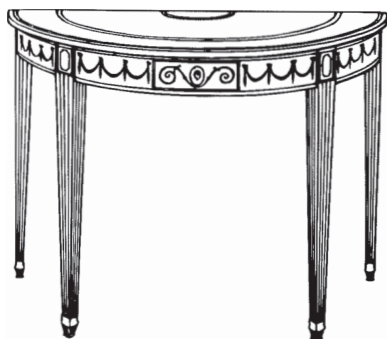
Brook Farm Studio

Bildeston's studio for painting, pottery,
figurative drawing, felt making, crafts
and creative embroidery

Website: www.brookfarmstudio.co.uk
email: brookfarmstudio@gmail.com
Call Hazel 07432 138966/01473 823819

Antique Renovations

The Restoration experts



Lavenham Studios, Brent Eleigh Road, Lavenham
Tell: 01787 248511
www.antique-renovations.co.uk
email - antiquerenovations@live.co.uk

N D ROSE

Int / Ext Decorating

- Decorating
- Wall / Floor Tiling
- Gutters Cleaned /
Repaired / Replaced
- General Building
Maintenance

**Local established tradesman 25
years experience**

**Free estimates good rates
References available**

**Tel: 01787 211042
Mob: 07518 040465
3 Fen Street Boxford CO10 5HL**



PHYSIOTHERAPY AND PILATES NOW AVAILABLE



Claire is an experienced
Physiotherapist and certified
Pilates Instructor.

Services offered:

- Physiotherapy
- Womens Health Physiotherapy
- Running Analysis
- Pilates classes (**BILDESTON & Hadleigh**)

PHYSIOTHERAPY CAN HELP WITH:

- Muscular aches and pains
- **Low back pain**
- Hip and pelvic pain
- **Neck pain**
- Joint pain or sprains
- **Repetitive strain injuries**
- Nerve pain
- **Ante and post natal pain**
- Pre- surgery



Clinic Address:
A Touch of Beauty
8 George St, Hadleigh,

www.fitframephysio.com

Tel: 07900440141

E: Claire@fitframephysio.com

The Place2play

toddler play sessions

Mondays 10-11am

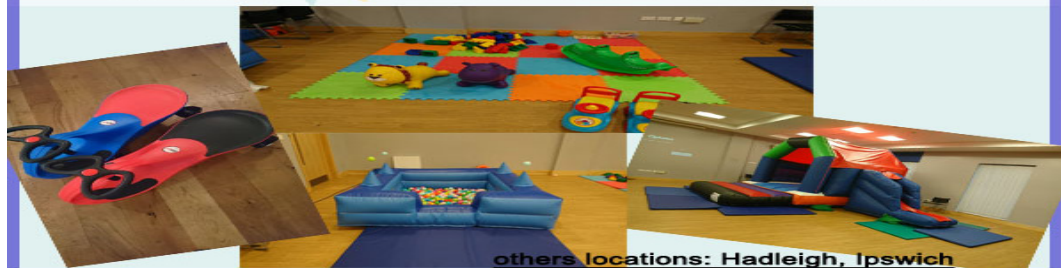
Chamberlin Hall

Bildeston IP7 7EZ

babies £1, from crawlers £3.50

(teas, coffee are included in the price,
snacks will be available)

for more information call 07870506690



others locations: Hadleigh, Ipswich

APRIL COTTAGE CATTERY

April Cottage, Powney Street, Milden, Ipswich. IP7 7AL



Newly opened Licenced Cattery exclusively for cats.



Large light airy chalets with exercise areas overlooking stables and fields.

Quiet areas for shy cats or busy window views for those needing entertainment.

Facilities to cater for elderly cats, kittens or cats with special needs.

All diets catered for (except prescription).

Daily grooming and administering of medicines are free of charge.

Family chalets which can cater for up to 6 cats (same household only).

Pick up and delivery service free up to 5 miles (£1 for every mile thereafter to a maximum charge of £10).

Prices start from £7.50 a day.

Special rates for long stays.



Please call Anne or Kevin on 01787 247302 or 07985 404813

Email: info@april-cottage-cattery.co.uk www.April-Cottage-Cattery.co.uk

www.facebook.com/aprilcottcats

**Now Frying At Market Square
Bildeston**

Thursdays 4pm – 7.30pm

Fridays 11am – 1:30pm



**Local Mobile
Fish & Chip Shop**

**Functions Catered For
Shows • Parties
Weddings • etc.**

**Telephone
01473 830771**

BILDESTON ELECTRICAL

Rewires, Extensions, Board Changes or New Installations

Any Alterations to Existing Installations

(lights, sockets, etc.)

Contact Ian

01449 743664 or 07754 723685

BILDESTON PARISH COUNCIL

DRAFT Minutes of the meeting of Bildeston Parish Council

held on Wednesday 11th April, 2018 in Chamberlin Hall at 7.30 pm

In attendance:

Councillors: R Taylor (Chairman) A Guttridge & A Hubbard

Also Present: County Councillor R Lindsay

District Councillor M Creffield, One member of the public

D Blackburn (Clerk)

The Chairman, Councillor R Taylor, welcomed everyone to the meeting.

C182/17/18 APOLOGIES FOR ABSENCE

Apologies for absence were received from Councillors P Bullen and

D Dempsey.

C182/17/18 DECLARATIONS OF PECUNIARY AND NON-PECUNIARY INTERESTS

The following declarations of non-pecuniary interest were made:

Kings Pightle Management Committee – Councillors Hubbard & Taylor; and

Sportsfield Management Committee – Councillor Taylor

C183/17/18 DISPENSATIONS IN RESPECT OF PECUNIARY INTERESTS

There were none.

C184/17/18 MINUTES OF PREVIOUS MEETING

It was **AGREED:** That the minutes of the meeting held on 14th March, 2018 be signed by the Chairman as a correct record.

C185/17/18 COUNTY COUNCILLOR'S REPORT

County Councillor Lindsay reported on the following matters:

- The appointment of a new Chief Executive, Nicola Beech, by Suffolk County Council;
- The announcement made by the Leader of Suffolk County Council to undertake public consultation over the creation of a single unitary council covering the whole of Suffolk;
- 11,000 reports received of potholes across Suffolk so far, during the course of the year. Details could be reported using the online reporting tool on Suffolk County Council's website. Repairs were prioritised with regard to the level of risk that they posed. Over 2200 claims had been made against the County Council by road users in respect of potholes and over 85% had been defended successfully by the County Council.

• A litter fund had been set up to support better signage, more intelligent operations with regard to bin emptying and enforcement action against those dropping litter. Reference was also made to the success of the Annual Village Litter Pick which had been held recently in Bildeston.

• James Cartlidge MP was promoting a local event to encourage Parish Councils to adopt Neighbourhood Plans. There was a brief discussion about this matter and the Parish Council's position was re-affirmed as being that without the inclusion of site allocations where the village was prepared to accept residential development, the adoption of a Neighbourhood Plan was of limited value. There was an expectation that site allocations would be considered as part of the preparation of the new Joint Local Plan for Babergh and Mid Suffolk.

C186/17/18 MARKET SQUARE

Members of the Parish Council supported the proposal by Keep Bildeston Beautiful to hold a Bildeston Brocante on the Market Square on Sunday, 8th July, 2018.

Further to Minute C173/17/18, further information had been provided by the proprietor of Bank House Stores, Mr Alcoe, regarding a proposal to operate an outdoor café in the Market Square in good weather.

It was **AGREED:** That permission be granted for Mr Alcoe to use the Market Square for an outdoor café subject to the following:



- a. The permission is for an initial period up to 31st March 2019 and is subject to ongoing review;
- b. The tables and chairs shall be positioned within the perimeter of the bollards; and
- c. The Market Square shall not be used on coffee mornings at the Baptist Church (generally Fridays) and on days when other village events are being held on the Market Square.

There followed a discussion about the installation of permanent bollards by the seating area to the rear of the clock tower and the consensus was these works should be undertaken in conjunction with proposed works to the Clock Tower itself.

C187/17/18 RECRUITMENT OF ADDITIONAL MAINTENANCE OPERATIVE

Further to Minute C174/17/18, the Clerk reported that the position of additional Maintenance Operative had been advertised in The Bugle.

It was AGREED: That the position be advertised for a further month in The Bugle and in Bank House Stores.

C188/17/18 HEALTH AND SAFETY ARRANGEMENTS IN RESPECT OF EMPLOYEES

The Clerk reported that he and the Maintenance Operative had met to review and sign off the risk assessment in respect of maintenance duties. There appeared to be no further training needs at the present time and personal protective clothing was being used. It had been agreed that the Maintenance Operative should purchase a first aid kit. Various documents had been shared with the Maintenance Operative that had been prepared by the Health and Safety Executive on Health and Safety Made Simple, First Aid at Work, Manual Handling at Work, Providing and Using Equipment Safely, Safe Use of Petrol in Garages, Working with Substances Hazardous to Health. The Parish Council's Health and Safety Policy had been updated and an Accident Reporting Form created.

The duties of the Clock Tower Winder were discussed and Councillor Hubbard confirmed that relevant training had been provided by Haward Horological. An inspection of the site and updated risk assessment would be prepared by the Clerk and Councillor Hubbard.

It was noted that induction and training would be required for the additional Maintenance Operative at such time as an appointment was made to the role.

It was AGREED: That the actions taken in respect of health and safety arrangements be supported and maintained under review.

C189/17/18 UPDATE ON VILLAGE AMENITIES (UNDER THE MANAGEMENT OF OTHER BODIES)

Councillor Taylor reported that there was a limited and unsustainable membership of the Sportsfield Management Committee and that new members were required. Grass cutting arrangements for the Sportsfield were discussed and it was agreed that the Clerk liaise with Vertas to cancel the existing agreement for mowing the football pitch.

Councillor Hubbard reported that the Kings Pightle Trustees were continuing to explore options for the investment of funds from the Henry Morphew bequest.

Mr Bailey of the Chamberlin Hall Management Committee discussed with Members of the Parish Council the maintenance arrangements for the play area, bowls green surroundings and other grassed areas at Chamberlin Hall.

It was AGREED: That a joint meeting be held between representatives of Chamberlin Hall Management Committee and the Parish Council to discuss further, which parts of the Chamberlin Hall site are to be maintained by the respective parties and arrangements for storage of mowing equipment.

C190/17/18 PARISH COUNCIL AMENITIES

Councillors Guttridge and Hubbard had inspected the loose render within the Clock Tower. Water appeared to be penetrating from outside and the render was acting to keep the damp in. There also appeared to significant weathering of the pointing of brickwork on the exterior of the structure.

It was AGREED:

- a. That Councillor Guttridge seeks advice from the Historic Buildings Officer at Babergh District Council with regard to the inspection and repair of the Clock Tower; and
- b. That Councillor Hubbard removes loose render from the inside of the Clock Tower.

C191/17/18 CLERK'S REPORT

There were no matters to be considered.

C192/17/18 DISTRICT COUNCILLOR'S REPORT

District Councillor Creffield reported upon the following matters:

- The suspension of consultation over the proposed merger between Babergh and Mid Suffolk District Councils in view of Suffolk County Council's recent proposal to create a single unitary authority in Suffolk.
- Plans for the former premises of Babergh District Council at Corks Lane, Hadleigh.
- Planning permission granted for a multi-million-pound investment in Gainsborough House and area in Weavers Lane, Sudbury with work on site expected to commence later in the year.
- The use of Community Infrastructure Levy funding and the alignment of expenditure by the District Council to its Joint Strategic Plan and Joint Local Plan.

C193/17/18 AUTHORISATION OF PAYMENTS AND OTHER FINANCIAL MATTERS

It was AGREED:

- a. That the following payments be authorised:

Payee	Description	Budget Category	Amount (inc. VAT)
David Blackburn	Clerk's Pay	Salaries & Expenses	£163.06
David Blackburn	Expenses	Salaries & Expenses	£39.96
HMRC	PAYE (to end Mar)	Salaries & Expenses	£452.20
Speedar Ltd	Battery	Traffic Calming	£71.22
Robin Taylor	Domain Renewal	ICT & Website	£57.56
SALC	Annual Subscription 2018-19	Subscriptions	£400.83

- b. That the following receipt be noted:

Payee	Description	Budget Category	Amount (inc.VAT)
Babergh District Council	Precept First Instalment 2018-19	Precept	£11,185.00
WA Deacon & DG Deacon	Burials	Burials	£65.00
Andrew Bingham	Burials	Burials	£200.00

The Clerk reported upon the forecast outturn position in respect of receipts and payments which would mean that the Parish Council would automatically fall into the category of Parish Councils which were subject to internal and external audits.

It was AGREED: That the audit position be noted.

Planning Appendix A: Planning Applications Consultation

Reference	DC/18/01462
Address	79 High Street Bildeston Ipswich Suffolk IP7 7ER
Proposal	Discharge of conditions application for DC/18/00290 - Condition 1 (Timetable) Condition 2 (Approved Plans) Condition 3 (Materials) Condition 4 (Fenestration)
Representation	No objection

Reference	DC/18/01370 & DC/18/01371
Address	138 High Street Bildeston Ipswich Suffolk IP7 7ED
Proposal	Internal and external alterations as per annotated drawing 9B and erection of first floor extension.
Representation	No objection

Reference	DC/18/01138
Address	Church Farm Church Road Bildeston Ipswich Suffolk IP7 7EE
Proposal	Householder Application. Erection of cartlodge
Representation	No objection

Planning Appendix B: Planning Applications Decisions by Babergh District Council

Reference	DC/18/00420 & DC/18/00421
Address	Redwick House High Street Bildeston Ipswich Suffolk IP7 7EX
Proposal	Householder Planning Application - Erection of single-storey rear extension (following removal of existing garden room extension); Erection of single-storey rear canopy (following removal of existing retractable awnings); Erection of pitched roof to existing front porch; and insertion of replacement windows throughout the building.
Decision	Granted

Reference	DC/18/00431
Address	4 High Street Bildeston Ipswich Suffolk IP7 7EY
Proposal	Application for Listed Building Consent - Erection of a rear extension
Decision	Refused

Reference	DC/18/00941
Address	Newbury House 34 High Street Bildeston Ipswich Suffolk IP7 7EY
Proposal	Notification of works to Trees in a Conservation Area - T1 (Cherry) - Reduce of overhang to the rear of garden back to the fence line approximately 7.8m high. Removal of overhang of No. 1 large lateral to the garden to balance. T2 (Hazel) - Reduce the tree down to approximately 1m above fence. T3 (Holly) - Reduce by approximately one third and shape to remove Hazel growing through it. T4 (Laurel) - Reduce down to approximately fence height to encourage new thicker and denser growth
Decision	Granted

C195/17/18 PUBLIC SESSION

There were no matters raised.

C196/17/18 MATTERS TO BE BROUGHT TO THE ATTENTION OF THE COUNCIL

Councillor Hubbard had been approached by a local resident who had enquired if a mirror could be affixed to a wall at the junction of Chapel Street and High Street to make it safer to exit Chapel Street. The Parish Council understood that mirrors would not be approved but that the resident should be invited to discuss the matter directly with Suffolk County Council's Highways Department to obtain a definitive view on the matter.

Councillor Guttridge noted that the sale particulars for the Land to the East of Artiss Close referred to the payment of a Section 106 contribution and not to Community Infrastructure Levy and it was agreed that Babergh District Council be asked to confirm that CIL payments would apply.

The meeting closed at 9.23pm.

CLERK'S COLUMN

Maintenance Operative

The Parish Council is seeking to recruit an additional Maintenance Operative to carry out grounds and general maintenance duties in the village. We are looking for someone with strong practical skills who is both flexible and resourceful. There will be no fixed pattern of work but the postholder should expect to work longer hours during the summer months in mowing grass, strimming etc.

If you are interested please contact the Parish Clerk or one of our Parish Councillors **by Tuesday, 8th May, 2018**. Their contact details are available on the Bildeston Website www.bildeston.org;



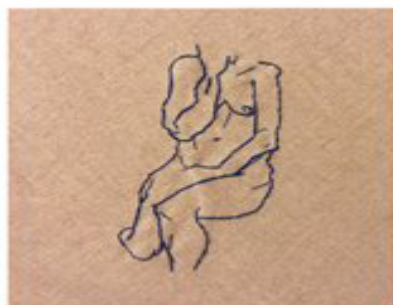
David Blackburn
Parish Clerk
clerk@bildeston.suffolk.gov.uk;
01449 721369

HERS & MINE

19 - 28 MAY | 10 - 4pm



LOUISE CHAPMAN



ANNALIE ASHWELL

Silwood Gallery
Consent Lane
Bildeston
Suffolk
IP7 7SB
www.A2arts.net

PREVIEW 18th
OPEN EVENING 25th
from 6:30pm

- ❖ Home Maintenance
- ❖ Carpentry
- ❖ General Building Work
- ❖ Brickwork & Blockwork
- ❖ Stonework
- ❖ Hand Built Sheds
- ❖ Floor & Wall Tiling
- ❖ Paving & Patios
- ❖ Kitchens & Wardrobes
- ❖ Pergolas
- ❖ Carpentry
- ❖ Bespoke Fencing
- ❖ Property Maintenance
- ❖ Repairs
- ❖ Advice & Planning
- ❖ Shop & Office Fitting
- ❖ Renovation Work



Bildeston - Suffolk.

For a prompt & reliable service.



01449 740275 or 07580 753020
Email: bobbuckle10@gmail.com

D J Dunstone Optometry

3 Queen Street, Hadleigh

For your entire eye care needs,
including contact lenses, latest Swept
Source OCT eye scanner, examination of
children and home visits

Frames include: Polo Ralph Lauren, Ray-
Ban, Elle, Paul & Joe and Esprit



To find out more please call in, telephone 01473 823755
or see dunstoneinsight.com



A & P

WINDOW CLEANERS.

Providing a friendly, reliable and efficient service since 1995.

Andy: 01449 722680. Paul: 01473 604714.

Mobile: 07711 381919.

FULLY INSURED.

**With over 50 years of Traditional Window Cleaning experience,
we're at the top of our Profession!**

GIDNEY

PLUMBING & HEATING

Tap Changes, Ball Valves, Shower Pumps,
Water Softeners, Hot Water Cylinders,
Bathroom, Wet room & Kitchen Installs,
Radiator & Valve Replacements,
Underfloor Heating, Heating System Repairs,
Renovation & New Builds.

24 Hour Emergency Cover
Professional & Reliable Service

07534525263
01449 258254

gidneyph@outlook.com
www.plumbinginsuffolk.com

RESEARCH MY ROOTS

Let me build your family tree

If you are looking to trace long lost relatives,
search for a biological parent or just wish to find
out who your ancestors were, please get in touch.

www.researchmyroots.com

ali@researchmyroots.com | Tel : 07704 712643

My name is Ali MacDonald and I have a passion for Genealogy. I have a diploma in Genealogy and many years experience in research. If you are looking to trace long lost relatives, search for a biological parent or just wish to find out who your ancestors were, please get in touch. My prices are very competitive and I live in STOWMARKET.

Thanks for reading this and I hope to hear from you!

Please visit my website for more details:

Friendly Experienced
Teacher offers
Individual

MATHS Tuition

Speciality
Confidence Building

KS1 – KS3

Call Colin Plummer on
01449 736918
for details and availability
or email:
colinp52@btinternet.com

Angel Delights

**Outside Caterer &
Specialised Confectioner**

*We cater for all occasions including;
Weddings, Funerals, Christenings,
Birthday Parties,
Canape and Dinner parties,
Corporate events and Barbecues*

CAKES FOR ALL OCCASIONS

Contact Helen
01473 806398
info@angel-delights.com
www.angel-delights.com

Stuart Walker

Decorating, Painting & Refurbishments



A locally based company offering an honest and reliable service

Painting - Decorating - Refurbishments - Repairs

All work considered indoors & out! Fully Insured & free quotations provided

Please contact Stuart on Tel: 07711 606464 or 01449 740387

Email: stuma1@hotmail.co.uk

****Pilates and Yoga classes now at Kersey Mill****

If you want to exercise both your body and mind as well as improving your sense of well-being, strength, flexibility and mobility then Pilates is for you! We are passionate about bringing the benefits of Pilates/Yoga to everyone and with a highly qualified team of instructors we can certainly help you improve muscle tone and core stability, building strength from the inside out, re-balancing the body and bringing it into correct alignment.

BEGINNERS CLASSES AND FREE TASTER SESSIONS* ARE NOW AVAILABLE AS WELL AS PRIVATE 1:1's

** on selected classes*

We now offer small Yoga classes too to add to your well-being experience at Kersey Mill. Please get in touch if you would like any more information.

Whether you are new to Pilates/Yoga or have been enjoying the benefits for years, we feel confident that we can accommodate your needs to achieve results.



THE FLOWER SHOP

Your local independent florist

Creating beautiful
arrangements for
all occasions using
only the freshest,
seasonal flowers

Visit us in store
to view our flowers,
plants and
homeware items,
or order by phone
or online

Local and nationwide
deliveries

• ESTABLISHED 2013 •

www.theflowershopkm.com

THE FLOWER SHOP AT KERSEY MILL Near Hadleigh IP7 6DP

01473 805156

Andrew Bingham

INDEPENDENT FUNERAL SERVICE

Caring, family run funeral service

*Small enough to care,
Large enough to cope.*

www.andrewbingham.co.uk

Award winning 24 hour personal service - qualified & experienced



Bereaved Young

Golden Charter
Funeral Plans



Friends in Bereavement
Support Group



01449 771666

The Nutshell, Milton Road South,
Stowmarket, Suffolk IP14 1EZ





D'ENZA HAIR & BEAUTY SALON at
"KERSEY MILL"

"May Offers"

1: May offer~ ½ leg wax, Eyebrow wax, Eyelash & brow tint

Special Price of only £35

2: Relaxation offer~ Hopi Ear Candling Treatment with a back, neck & shoulder massage

Special Price of only £35

3: Reflexology & Sports Massage available on certain days-

Special Price of only - 30mins £35 - 45mins £45

4: The new Zone Face Lift~ a natural & kinder anti-ageing facial treatment as effective as Botox. (12-week course offered by Gaynor)

***Other additional treatments include Threading, Russian eyelash extensions & Gel nail extensions**

Amy, Hayley & Sarah are our hairdressers at D'ENZA Hair & Beauty -Please call 07547488587.

The above offers cannot be used with another offer.

Please telephone for more information or make a booking on: **01473 829069**

Email: emmaspraggons@yahoo.co.uk or visit us on Facebook or Twitter for our special offers.

For opening times & brochure please look at our website: www.denzahairandbeauty.com



Unit 1 Church View Kersey Mill, Kersey, Ipswich, Suffolk. IP7 6DP.

Stowmarket _____ Chorale

FORTHCOMING EVENTS as at 7 April 2018

Stowmarket Chorale and Dorian Singers combine for a pair of concerts in aid of Alzheimer's Research UK - *Captain Noah and his Floating Zoo* (by Michael Flanders and Joseph Horowitz), and *Songs of the Fleet* (by Charles Villiers Stanford)

Saturday 23rd June - 7.30pm at Trinity Methodist Church, Hamilton Road, Felixstowe, IP11 7AN. Tickets £12 including refreshments.

Saturday 7th July - 7.30pm at the United Reformed Church, Ipswich Street, Stowmarket, IP14 1AD. Tickets £12 including refreshments.

Sunday 1st July - Stowmarket Chorale take part in the Ipswich Music Day. Further details available soon.

Saturday 3rd November - *Messiah* (G F Handel) performed at St Peter and St Mary Church, Stowmarket, IP14 1ES. We would welcome guest singers to join us for the Autumn Term at our weekly rehearsals to sing this marvellous work. Further details available soon.

Look out for further details of all forthcoming events on our website
www.stowmarketchorale.org.uk



Would you like to paint your own icon? A brilliant course suitable for both beginners and those who have done some icon painting before...

Tutor: Peter Murphy*
Location: Near Hadleigh, Suffolk
Dates: Monday 28th May 2018 to Friday 1st June 2018 inc.
Cost: £320.00 includes tuition and all materials.

This five day icon painting retreat for a maximum of 10 people will utilize specific Byzantine icons as prototypes. Over the course of the week students will learn to gild and paint on a specially prepared wooden panel using a range of traditional medieval techniques and materials. This will include water gilding, with 24 ct loose gold leaf over clay bole for backgrounds and halos and how to use egg tempera paint made fresh each day from free range egg yolks and natural pigments to model robes and figures. All materials including a gessoed wooden panel, gold leaf, gilding tools, brushes and authentic medieval pigments will be supplied. The course is suitable for all levels including beginners.

To book or find out more, please contact:
lizz.a.law@gmail.com or phone 01449 740085

*Peter Murphy was born in Leeds and was educated at the University of East London. He also trained with iconographer Guillem Ramos Poqui in London. He was Vice Chairman of the Society of Tempera Painters and is a member of the British Association of Iconographers for whom he runs workshops. He has been commissioned by a number of churches in the UK and has also been employed by a number of museums and has undertaken three major commissions for Hereford Cathedral. Website: petermurphyicons.co.uk.

**BILDESTON w WATTISHAM,
WHATFIELD w SEMER, NEDGING & NAUGHTON**

SERVICE SCHEDULE – MAY 2018

May 2018 NB – Services in bold are Benefice Services			
6 th May Easter 6	11.00am	Morning Prayer	Bildeston
13 th May Easter 7	11.00am	Holy Communion	Bildeston
20 th May Pentecost	9.30 am 11.00 am	Holy Communion Morning Prayer	Naughton Whatfield
27 th May Trinity Sunday	11.00 am	Benefice Holy Communion	Nedging

Baptist Church, Duke Street, Bildeston

Jim Haley tel: 01449 740716 email: bildestonbc@gmail.com

Service every Sunday morning at 10:45

Lunch Club: at 12:30 on the first Wednesday of each month –

All are most welcome

Community Coffee Centre: Every Friday from 09:15 to 11:30am

Enjoy meeting old and new friends at these events!

‘Craft it Together’ - First Monday of each month at 7:00pm.

Bring along your craft activities and join us for an informal, relaxed evening share ideas, gain new skills or just enjoy doing your own thing

Drinks provided.

01449 740716 or 01449 741606 for more information

Strollers and Striders

Every Monday 10.00am from the car park

‘Men’s Breakfast’ - last Saturday of each month at 8am



Bildeston Community Coffee Centre

Baptist Church 9:15-11:30 **Every Friday**

Lunch club

Baptist Church 12.15 for 12.30pm start.....**1st Wed every month**

Craft it Together

01449 740716/741606 for details.....**1st Monday every month**

Strollers & Striders

Baptist Church Car Park 10.00.....**Every Monday**

Bildeston Contemporary Choir

Bildeston Primary school 7.00pm.....**Every Monday during school term time**

Baby & Toddler Group

Baptist Church 9.15 to 11.30.....**Every Tuesday**

Bildeston Community Cycle Ride

Market Square 6.45pm.....**Every Tuesday**

Mens Breakfast

Baptist Church 8.00am.....**Last Saturday every month**

Ladies Club

Chamberlin Hall 7.30pm.....**Thurs 3rd**

Parish Council Meeting

Chamberlin Hall 7.30pm.....**Wed 9th**

Fund raising coffee morning & plant sale for St Mary's Church

Malham, 36 High Street 10.00 to noon.....**Thurs 10th**

BNatural Quiz Night

Sports Pavilion 7.30pm.....**Sat 12th**

VIPs Open Evening

Chamberlin Hall 7.00pm.....**Wed 23rd**

30th Bildeston Beer Festival

King's Head..... **Fri 25th to Mon 28th**

Please tell us about your forthcoming events in **June**

email: editor@bildestonbugle.co.uk



When you're finished with this Bugle please pass it on or recycle it.