

Issue number 328

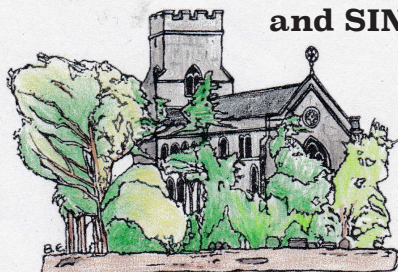
February 2018



*Happy
Valentine's
Day*

**This issue kindly
sponsored by -**

**The VIPs together
with Chamberlin Hall
Thanks to everyone for
your wonderful support of
the village hall in general
and SINBAD in particular**



Saint Mary's Church, Bildeston, Suffolk.

The village magazine produced for the people of Bildeston



BILDESTON BUGLE ADVERTISING AND FREE CONTRIBUTION INFORMATION

Our aim is to provide every resident in Bildeston with a magazine which provides information of local interest FREE OF CHARGE. To that end we are required to be efficient in the space we use to print free notices. We endeavour to include interesting items, announcements for events open to the general public for free and items of a charitable nature free of charge. Ongoing free announcements need to be reduced to minimum size or make a contribution towards printing costs. Please check with us before submitting your advert and ALWAYS provide us with all of your contact details in order for us to send a receipt.

email: editor@bildestonbugle.co.uk

Sponsor a 'Bugle' – £15 per issue

includes a brief message of your choice on the cover of the magazine

Advertising Rates

	1 issue	12 issues (30% disc)	
1/4 page	£3.00	£26.00	65mm W x 92mm H
1/2 page	£6.00	£50.00	134mm W x 92mm H
Full page	£12.00	£100.00	134mm W x 190mm H

THE SMALL PRINT

All adverts, payments and items are required before the 17th of the month for inclusion in the following month's issue (except December).

The earlier free contributions are received the greater the chance of inclusion.

Please make cheques payable to Bildeston Bugle and send to:

The Editor, Bildeston Bugle, 14 Squirrells Mill Rd, Bildeston IP7 7DY

Receipts cannot be issued without your full postal address.

If we do not receive payment by the 17th of the month your advertisement may NOT be included

The Bildeston Bugle Management Team is:

Alan Jacobs (Editor) 01449 741645

Tricia Baldwin (Marketing & Advertising Revenue)

Christine Hubbard (Treasurer) 01449 740633

Stuart Law (Assistant Editor)

Alison Sims (Assistant Editor)

ED'S COMMENT

Did you know, on 4 February 1927 Donald Campbell set a new land speed record at Pendine Sands, covering the Flying Kilometre (in an average of two runs) at 174.883 mph (281.447 km/h) and the Flying Mile in 174.224 mph (280.386 km/h), driving the famous Napier-Campbell Blue Bird? Campbell broke the land speed record for the first time in 1924 at 146.16 mph (235.22 km/h) at Pendine Sands near Carmarthen Bay in a 350HP V12 Sunbeam, now on display at the National Motor Museum, Beaulieu.

Campbell eventually broke nine land speed records between 1924 and 1935, with three at Pendine Sands and five at Daytona Beach. His first two records were driving a racing car built by Sunbeam. He set his final land speed record at the Bonneville Salt Flats in Utah on 3 September 1935, and was the first person to drive an automobile over 300 mph, averaging 301.337 mph (484.955 km/h) in two passes.

90 years later the current world land speed record stands at 763.035 mph, set in October 1997 by British Royal Air Force pilot Andy Green driving the jet-powered Bloodhound Thrust SSC. At some point this year, 2018, Andy Green is looking to break his own record with a new car Bloodhound SSC, designed to reach 1,000mph!

Apart from the science, technology, engineering and sheer courage to sit on top of a rocket packed with enough fuel and power to blast you out of the atmosphere, what is the point? Why the desire for ever greater speed? Why the push to make life even faster than it already is? It's like the £56 billion proposed for the high speed rail link from London to the north. Latest expectations are that it will cut the journey time from London to Birmingham from its current 1 hour 21 minutes to 49 minutes. That's a saving of 32 minutes, half an hour! Half an hour to rush around and pack more things into our over-stressed lives that we didn't have time for before! That's if the train departs on time and there are no works, or wrong leaves or a dispute or anything else that commuters suffer. A recent study researched the most common stresses of fast-paced modern life. The effect of all our minor worries is that we suffer an average of 2 hours 28 minutes of stress each day. According to a poll by SureMaxPro, London is the UK's most stressed-out city - closely followed by Manchester and Birmingham. So that means after HS2 people travelling between London and Birmingham will have an extra half hour to stress!

Modern living can fill us with too much input, leading to sensory overload. Soon we're experiencing everything as stressful, we're over-responding to all manner of daily situations "as if" they are a threat. How does this cycle get going? The Fight or Flight mechanism in all humans was evolved originally to be used in times of danger, not throughout the day. It enabled early humans to flood the body with adrenaline and achieve survival feats, like running away promptly or fighting incredibly well. But the body can't tell the difference between real and fabricated fears, between the stress of a late train, a traffic jam or a woolly mammoth charging!

An expert in this area, Dr Dayton, wrote, *"Live slowly and intentionally so that you can actually enter the present and savour what you already have. You may find that simplifying your life makes it feel fuller than constantly chasing after what you think you "need" to feel happy."* In other words, while the world searches for a way of making things happen ever faster, and we become wedded to our mobile phones, smart devices, and instant messaging and information, keep a balance by deliberately slowing down, thankful for what you have and treating time as the most precious commodity there is.

Which, of course, it is!



HONEY BEE'S NURSERY

Hitcham Village Hall, Hitcham, IP7 7NE

FOR CHILDREN AGED 2 – 5 YEARS

Open Mon, Wed, Fri 9.15a.m. – 12.15p.m. or 3.15p.m.

Tues, Thurs 9.15a.m. – 12.15p.m.

Early Drop Off – 8.15a.m. Lunch Club Daily until 1.15p.m.

2 Indoor Rooms and Outdoor Areas

Ofsted Registered

**Early Years Funding accepted for all 3 & 4 year olds
With 30 hrs funding available from September 2017**

Contact: Sharon Scarfe 01449 740764 (hall) 01449 740581 (home)

Or visit honeybeesnursery.co.uk

**WANT TO LEARN TO PLAY
GUITAR, BASS, DRUMS?**

***MANY CONTEMPORARY STYLES COVERED, INCLUDING
ROCK, METAL, POP, INDIE, BLUES, FUNK AND MORE.***

KEYBOARDS, VOCALS, SONG AND LYRIC COMPOSITION

MOBILE DIGITAL RECORDING SERVICE AVAILABLE



ADAM KEETON

GOOD COMPETITIVE RATES

01449 744530 OR 07914 798374

FULL DBS + PROJECT LEADER WITH AMPLITUDE



Bildeston Primary School



Christingle Service

On Monday 18 December, all of our children attended a Christingle service held at St Mary Magdalen Church. Reverend Jackie Sephton took the service for us.

Some of our KS2 children gave readings and recited the Lord's Prayer. The children also gave donations and took those to the church in special "Children's Society" candle holders and these were placed on the altar. A huge thank you goes to Reverend Sephton and to the parishioners for making our wonderful Christingles for the service.

Greek Workshop

Having transformed themselves into Greek Gods and Goddesses, Greek Soldiers, Greek Kings and Queens, pupils were ready to learn and take part in a range of fascinating activities presented by Portals to the Past. Transported back to 490BC pupils became thinkers and philosophers and took part in numerous activities to gain knowledge of the happenings during the Greek era.



The Partnership of Bildeston Primary and Whatfield CEVC Primary Schools

We are pleased to say that as of 1 February 2018 our governors of both schools have decided to formally federate which means both schools, whilst remaining separate and individual, will have one governing body. This is not the same as academising but it does mean that we can continue with the flexibility and security we have enjoyed. We can offer lots of opportunities to both pupils and staff as we have for the last four years but we will be on a more secure footing for both schools. Bildeston will remain a community school and Whatfield will remain a church school with their own ethos and values. We hope you will join us in celebrating what will be an exciting move forward for both schools.

Please feel free to call us to arrange a visit at your convenience and we would be happy to show you around our school.

"Learning and Growing Together"
Newberry Road, Bildeston, Ipswich, Suffolk, IP7 7EU
Telephone: 01449 740269
Website: www.bildeston.suffolk.sch.uk





VILLAGE INDEPENDENT PLAYERS PROUDLY

PRESENTS



SINBAD

at Chamberlin Hall

Sat 27th Jan 7.30pm, Sun 28th Jan 2.30pm

Fri 2nd Feb & Sat 3rd Feb 7.30pm

For Tickets Contact:
01449 740375



£8 Adults
£4 Children

The Monks Eleigh Village Hall Trust are excited to announce their **Murder Mystery Evening** at the Chamberlin Hall in Bildeston on **Saturday 24th February 2018 at 7.00pm.**

The evening will include a 2 course supper, bar and raffle and will feature actors from Lavenham Players, who will enact the murder and take parts as the suspects. You will carry out the investigation as the detectives! You can all work individually or as small teams.

The murder scenario will be based upon a commercially produced game, with various clues and an official solution. So it is down to you as the sleuths to find out the truth and the guilty party.

Come along and have some fun!

Tickets are available from: Bank Stores in Bildeston, or at the Monks Eleigh Community Shop. Alternatively call 01449 740414 to obtain yours. The price per ticket is £13.50, with the proceeds going to the Monks Eleigh Village Hall build fund.

BILDESTON CHAMBERLIN HALL

What's on February



Every Monday 8.00pm to 10.00pm Badminton Club and table tennis

Everyone welcome, please remember to wear white soled trainers, not black.

Every Tuesday	1.30pm to 2.30pm	Keep Fit with Kelly
Every Tuesday	from 7.00pm	Snooker Club
Every Thursday	11.00am – 12.00	Zumba Gold with Sarah
Every Thursday	7.30pm to 9.30pm	Music Youth Group
Thursday 7th	7.00pm	Ladies Club
Every Friday	7.00pm	Friday Night Activity & Social Club
except last Friday of the month when we have Bingo		
Friday 23rd	7.00pm	Bingo!
Fri 2nd and Sat 3rd	7.30pm	VIPs present SINBAD the panto
Saturday 24th	7.00pm	Murder Mystery Evening!!



**Have you set yourself a fitness
related New Years Resolution?**

**Join our friendly Keep Fit
Class at Chamberlin Hall,
Bildeston**

Every Tuesday 1.30pm – 2.30pm

**A new Keep Fit class that enables you to
keep active at your pace, the class will
include stretching, core work and a range
of Keep Fit exercises.**

Just £5 a week.



CONTACT US TO BOOK:

Callum – T: 07701 087952

E: callum@jcpersonaltraininguk.com



CHAMBERLIN HALL - YOUR COMMUNITY HALL



Karen Finch RHAD FSHAA FRSA

How's your hearing?

Take the first step towards better hearing and book a hearing test with The Hearing Care Centre!

Find us locally at:

The Health Centre, **Hadleigh**

The Country Practice, **Needham Market**

StowHealth, **Stowmarket**

- Hearing tests ■ Latest digital hearing aids ■ Outstanding aftercare
- Earwax removal ■ Custom made ear protection ■ Home visits

To book your appointment call 01473 230330

■ Award Winning ■ Family Run ■ Private ■ Independent ■ Local

hearingcarecentre.co.uk

COUNTRYSIDE OBSERVER



The memory can play tricks I know, but it's helped by looking back on previous memories of some very harsh winters photographed in black and white. One had a simple camera then, armed with a roll of 36mm film offering 36 exposures. That's all you got before another trip to the local chemist to get them processed. The winter of 1962/63 rolled on throughout what seemed eternity. Snow started on Boxing day, the thaw finally arriving in March. Suffolk and Norfolk was nothing but white for weeks, I was four years old but can recall the snow piled high where we lived near Woking in Surrey. The snow that

we had Sunday 10th December was enough to stop many venturing outside. With so few snowy days it's one of winter's pleasures to be the first out treading a path through virgin snow, my usual walk had already been traversed by a Roe deer, various game birds and what I think was a Fox. This was confirmed as the footprints stopped at a grassy tussock where a yellow stain in the snow showed that Mr Fox had relieved himself, and left his distinctive scent. It's this type of weather where feathered friends feel the cold more than ever, food becomes scarce and life becomes a battle of survival. We can all do our bit here to help the birds and for very little cost but huge gain. Why not set up a bird feeding station in your garden? It can be in a tree or if there's not one close by a wooden post about 8 ft high with platform and ideally a roof to keep food dry. We have an apple tree on our front lawn less the thirty feet away from our kitchen diner. The crop this year was huge, so we have left around twenty big red fruit on the tree that look very festive. On the branches we have hung feeders with peanuts, wild seeds, fat balls and suet in Coconut halves. Observations with binoculars have seen a multitude of birds species attend. We had a pair of Fieldfares attacking the apples with vigour, so much so that a couple have fallen to the ground where blackbirds and native Thrushes are feasting. As the cold weather stays it's important to look after our birds and as word spreads you will soon have birds of all types arriving. Highlight for me so far were five long tailed tits on one Coconut half, jostling each other for position and the chance to feed on the life saving fat.

Whilst there are a number of evergreen tree species native to us, the Hollies are particularly useful garden subjects for providing winter interest. Being mostly deciduous a male and female plant must be grown to ensure berries are produced. Berries are usually red or orange but yellow berried varieties are also available. Hollies are easy to grow and tolerate sun or partial shade but prefer a moist or well drained soil. If left unpruned a holly can reach 10m or more in height, but are quite slow growing and tolerate hard pruning if required. Some people prefer a holly bush to a tree, or grow as a multi stemmed coppice or Holly hedge. The timber of a Holly is hard and was traditionally used for making bag pipes prior to the introduction of exotic hardwoods.

2017 has been an interesting year and as always it gives me a lot of enthusiasm and drive to hear villagers still enjoy my monthly ramblings. I am very grateful to all of you readers old and new and plan to continue my jottings for the foreseeable future.

Mike Biddulph

CPH Property Services

Painting & Decorating (Interior & Exterior)
Fencing
Patios, Pathways & Shed Bases
Plaster Boarding & Tiling
And much more.....

Fully Insured & Free Quotations Provided

Telephone Chris: 01787 210536 or 07717059370

Telephone Paul: 01449 740020 or 07880727630

Email: chris.harman1990@gmail.com



FIREWOOD

DRY SEASONED LOGS

Various Loads Available



Call Carol Abbott on 01473 829130
or 07768 795981

Tree, Garden Work and Driveways also
Undertaken



Bildeston Village Stores and Post Office

Tel: 01449 740248

Winter Opening hours

Monday – Saturday 7.00am – 7.00pm

Sunday & Bank Holidays 8.00am – 12 noon

Village Stores

Freshly baked bread and croissants

Everyday provisions

Fresh fruit and veg

Local ham, bacon and sausages

Bildeston Honey

Hot food and drinks to-go

Logs and Coal

Cards, gift wrapping, stationery supplies

Newsagents and off-licence

Monthly Londis promotions

Post Office (7 days a week)

Postal services

Post office card account

Cash deposits/withdrawals

Postal orders

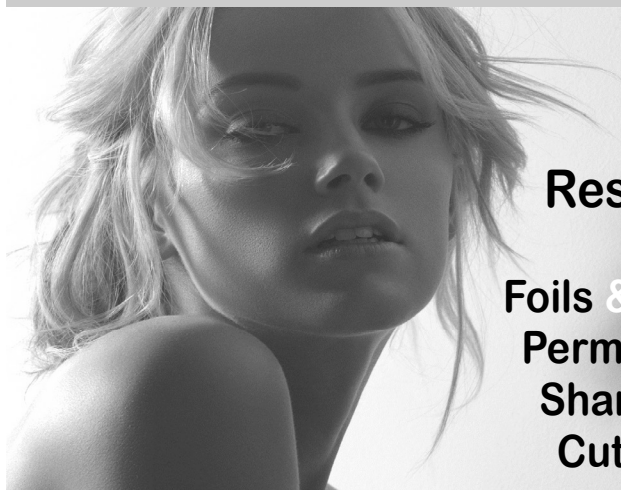
e top ups

Foreign currency

Lottery

Studio 66

Ladies and Gents Hairdressers



Restyling

Foils & Highlights

Perms & Colours

Shampoo & Sets

Cut & Blow Dries

Friendly Service from our Professional Team

Tue & Wed Senior Citizens

*****special rates *****

Opening Times Tues - Friday 9 - 5 pm Sat - 8 - 1pm



Tel 01449 740644

52A High St Bildeston IP7 7EA

Bildeston Ladies Club



A BIG THANK YOU to all who came along to our Coffee morning in aid of SARS. Also to the ladies who baked delicious cakes and

savouries and gave raffle prizes, as well as those who helped on the day. We raised approx £1 50 which we have added to our collection for this very worthwhile charity.

On February 1st we will have an illustrated talk about the Castles Of Suffolk. As always the hall will be open from 7:30 p.m. for our meeting to start at 8:00 p.m.

We hope to see members old and new.

Don't forget- guests are also welcome.

Members - £2 Guests - £3.

PLEASE NOTE - we will be meeting in the main hall.

Chairlady - Jo Silburn - 01787 204184

Secretary - Jean Radley - 01449 743650

BURN'S NIGHT

at

The Bildeston Crown

Thursday 25th January

Haggis, neeps & tatties served with
a dram of whisky

•

Loin of venison with braised shin
& artichoke

•

Cranachan

£25 per person

Stay with us the night for only £75 per room!

Tables from 7pm. Advanced booking is required to avoid disappointment.



A & P

WINDOW CLEANERS.

Providing a friendly, reliable and efficient service since 1995.

Andy: 01449 722680. Paul: 01473 604714.

Mobile: 07711 381919.

FULLY INSURED.

**With over 50 years of Traditional Window Cleaning experience,
we're at the top of our Profession!**



BILDESTON

ALLOTMENTS

**Have you ever thought
of growing your own
vegetables and flowers?**

There are currently vacant plots, both full size and half size. Water is available on site, and the rents are reasonable.

If you are interested, please contact:

Robin Weaver, 741048, or Ashley Hubbard, 740633

COUSINS & SON BILDESTON LTD

available to carry out all your building requirements
from

Renovations / Alterations / Extensions to General Repairs

Please contact Paul for a free estimate

01473 658919 or 07876 244461

or email paul.cousins268@btinternet.com



Paul's Carpentry

**All Carpentry projects considered large
or small**

**Decking, Garden Rooms, Wardrobes,
Shelving, Children's play houses and
tree houses.**

Mobile: 0779 234 0365

Tel: 01449 616 888

email: paulhb100@gmail.com

www.carpentryservicesinsuffolk.co.uk



Megan is a mobile Beauty Therapist with over 13 years experience in the Beauty Industry. Offering professional and thorough treatments in the comfort & convenience of your home. Alternatively I welcome appointments at my log cabin in Hitcham. My log cabin is in a peaceful, rural location and benefits from off-road parking!

A variety of treatments include:

Dermalogica facials/Spray tanning/Waxing/Eye treatments/Jessica manicures & pedicures/Jessica Gel Nails/Foot health maintenance (nail trimming & hard skin removal)
LVL Eyelash perming/Reflexology

Covering the heart of beautiful Suffolk.
Please phone for any enquiries or for a full price list.

Megan Pryke VTCT, BABTAC

07876 717 008



KINGS HEAD & Brewery

Nigel, Susie, Ryan, Freya and the Kings Head team look forward to welcoming you to the Bildeston Kings Head.

www.bildestonkingshead.co.uk

- Here's our **free live music** for **February**: every **Wednesday** is **Open Mic Night** from **8:30pm**; from **9pm** on **Saturday 24th** there's **When Rivers Meet**, Aron guitar/vocals and Grace vocals/fiddle/mandolin, deliver divine harmonised vocals to some great folk/country tunes; and from **1pm** on **Sunday 25th** have a relaxing lunch with **Kevin Nightingale**.
- Thursday is bar games night, there's all the usual plus **Poker, Skittles** and **table top football, snooker & tennis**. **Open Deck/Vinyl night** is **15th Feb**. **Charity quiz night** is **22nd Feb** at 8:30pm, please arrive by 8pm. To book a quiz table telephone Sue/Nigel on 01449 741 434. A huge thank you to December's quiz teams who raised **£210** for **Crisis**.
- Our good value homemade food uses quality ingredients that are locally sourced where possible. We are well known for tasty beer-battered fish & chips, delicious boozy beef pie (Suffolk red poll beef) and our freshly prepared traditional Sunday roasts. Meals are cooked to order, available to eat-in or take-away and in child sized portions. To reserve a table please phone **Sue or Nigel on 01449 741434**.
- We brew our own real ales on-site (tours by arrangement) with at least one other from a local independent brewer.
- Our opening and food times are as follows:

Wednesday	Open 6pm-12am (open mic/buskin night)
Thursday	Open 6pm-11pm (bar games night)
Friday	Open 4pm-12am (full menu 5-9pm, T/Away 5pm)
Saturday	Open 12pm-12am (full menu 12-2pm & 6-9pm)
Sunday	Open 12pm-10:30pm (roast/Sunday menu 12-3pm)

- ❖ Home Maintenance
- ❖ Carpentry
- ❖ General Building Work
- ❖ Brickwork & Blockwork
- ❖ Stonework
- ❖ Hand Built Sheds
- ❖ Floor & Wall Tiling
- ❖ Paving & Patios
- ❖ Kitchens & Wardrobes
- ❖ Pergolas
- ❖ Carpentry
- ❖ Bespoke Fencing
- ❖ Property Maintenance
- ❖ Repairs
- ❖ Advice & Planning
- ❖ Shop & Office Fitting
- ❖ Renovation Work



Bob Buckle
Carpentry & Building Services

Bildeston - Suffolk.

For a prompt & reliable service.



01449 740275 or 07580 753020
Email: bobbuckle10@gmail.com

Green Farm Vintage China

Hire

A large range of pretty vintage china and glass to hire for all occasions, including tea parties and weddings.

With every order 20% will be donated to the charity of your choice.

For more information, please contact

Carole Homer:

Tel: 01449 741498

Mobile: 07879265756



Email: carole.homer@btinternet.com

Dentist

Paul Rolfe BDS

**Veneers & Crowns in a
single visit**

Dental Implants

Family Dentistry

**Lavenham &
Long Melford**

01787 882722

www.paulrolfedental.co.uk

Annual Litter-pick 2018.

This year we are trying to be organised well in advance, so here is the first plea for help with our annual village spring clean.

We have decided to try for an earlier time of year, as sometimes, if the Spring arrives early, the weeds and nettles hamper our task.

**We will be conducting the
Spring clean from 10:00 a.m.
on Saturday March 10th.**



shutterstock - 194425853

As usual you can pre-book a particular area of the village that you would like to work on or just join in where needed. Full details will follow in the March Bugle - so keep an eye out for them, or give one of us a ring. (Book early to avoid disappointment !)

Thanks

Jo Silburn 07753 355652

Robin Sidgwick 01449 747404

HAVE YOU LOST A SPECIAL WHISTLE?

*Found while out walking, a Dog Whistle.
The whistle is old and I would like to return it
to the owner. Description will have to be given.
Contact Sue Mann on 07833 355422*

BARGEWELL SKIP HIRE

2 - 8 yard skips
1 ton waste bags
We also collect any full waste bags

Long or short term hire
Delivery 7 days a week
Fast & friendly service

Stowmarket 01449 615056

Mobile: 07770 452378

High Rd, Gt Finborough, Stowmarket, Suffolk
www.bargewellskiphire.com
Credit cards accepted

CHIMNEY SWEEP

ECO SWEEP CHIMNEY SERVICES

NEW POWER SWEEPING METHOD USED
FOR A MORE THOROUGH CHIMNEY CLEAN
THAN BRUSHES.

INDUSTRIAL HEPA FILTERED VACUUM.

FULLY INSURED.

INSURANCE RECOGNIZED CERTIFICATES ISSUED.

SPOTLESS, RELIABLE AND FRIENDLY SERVICE.

ALL CHIMNEYS, WOOD BURNERS, AGA, BOILER

FLUES SWEEP.

GUILD OF MASTER SWEEPS CERTIFICATED MEMBER.



TEL. 01359 232335

PAINTING SERVICES

Rob Harrison

Painting & Property Maintenance

Tel: 01449 741041

Mob: 07852 795469



BILDESTON COMMUNITY CYCLING

Why not join our monthly Saturday morning Winter Warmer series, and get ready for those sunny spring days – not far off now?

WINTER WARMER 5

JOIN US FOR A RIDE OF ABOUT 25 MILES,
STARTING FROM THE MARKET PLACE
AT 9.30am, ON **SATURDAY 10 FEBRUARY**.
CAFE STOP HALFWAY. BACK ABOUT 12.30pm.

PUT IT IN THE DIARY NOW!

Warm clothing recommended. The ride will be mainly on quiet lanes, at an acceptable speed (no-one left behind!). Regret no unaccompanied children under 16.

JUST TURN UP; or for more information, contact Robin Weaver 741048



Upbeat Contemporary Choir

Our group is:

Fun.....Inspiring.....Exciting

In a Word - UPBEAT!

Pop, Jazz, Reggae, Easy Listening, Folk,
Songs from the Shows and Musicals,
Classical, Blues.....

So come & join the choir - Mondays in term
time 7-9pm at Bildeston Primary School.

To find out more Call Andrea
on 01449 740601 / 07778576534 or
a.kingoo@btinternet.com

We look forward to seeing you there.
Why not come next Monday and see how
you get on?

The Vegetarian Red Lion

***Under new management and
offering an exciting new menu!***

Located in Gt Bricett, IP77DD

Dogs Welcome!

***Tel:01473 657 863
www.vegredlion.co.uk***



Bildeston Sportsfield Pavilion



looking for a venue?

Function room and sportsfield for parties, events, rehearsals, meetings, clubs and much more.

For more information and competitive rates please ring 01449 741563 or e-mail secretary@sportsfield.bildeston.org



Dan Brown

Your local professional Electrician

Web: www.saveelectrical.co.uk

Phone: 07731 67 27 57

Email: dan@saveelectrical.co.uk

Over 15 years of experience to provide you with a friendly, professional and competitive service

Based in Rattlesden. All Aspects of Electrical Work Undertaken, including: Installation, Repair and Maintenance, Test and Inspect, Home Theatres, Smart Technology, Security

NIC Approved Installer, 17th Edition, Part P Qualified and Insured

SAVE Electrical can save you money on your electricity bill. By Changing your 50w downlights to Integrated LED downlights we can save you up to £15 per year per light in energy bills. Costing from £30 per light to supply and install, you will have paid for it within 3 years... and done your bit to stay green.



BILDESTON HEALTH CENTRE

	MONDAY	TUESDAY	WEDNESDAY	THURSDAY	FRIDAY
DR HAINSWORTH					
Open surgery	8.30-10.30	8.30-10.30	8.30-10.30	NOT IN SURGERY	8.30-10.30
BY APPOINTMENT	4.00-6.00	4.00-6.00	4.00-6.00		4.00-6.00
DR CLARK					
Open Surgery	8.30-10.30	8.30-10.30	8.30-10.30	8.30-10.30	NOT IN SURGERY
BY APPOINTMENT	4.00-6.00	4.00-6.00	4.00-6.00	2.00-4.00	
DR BEALE					
Open Surgery	8.30-10.30	8.30-10.30	NOT IN SURGERY	8.30-10.30	8.30-10.30
BY APPOINTMENT	4.00-6.00	2.00-4.00		2.00-4.00	4.00-6.00
MATT BREWER ADVANCED NURSE PRACTITIONER					
Open surgery	8.30-10.30	8.30-10.30	8.30-10.30	8.30-10.30	8.30-10.30
BY APPOINTMENT	2.00-4.00	NOT IN SURGERY	2.00-4.00	4.00-6.00	4.00-6.00
PRACTICE NURSE BY APPOINTMENT ONLY	9.00-12.30 2.00-3.30 4.00-5.40	9.00-12.30 2.00-3.30 4.00-5.40	9.00-12.30 2.00-3.30 4.00-5.40	9.00-12.30 2.00-3.30 4.00-5.40	9.00-12.30 2.00-3.30 4.00-5.40
PHLEBOTOMIST	9.00-11.00	9.00-11.00	9.00-11.00	9.00-11.00	9.00-11.00
HEALTH CARE ASSISTANT	2.00-3.20 4.00-5.45	2.00-3.20 4.00-5.45	2.00-3.20 4.00-5.45	2.00-3.20 4.00-5.45	2.00-3.20 4.00-5.45

Dispensary 08.30am until 1.00pm (closed for lunch)
 2.00pm until 6.00pm
 Saturday 09.00am until 12.00pm

SATURDAY SURGERY
 09.00 am until 12.00pm
PRE BOOKED APPOINTMENTS ONLY

PLEASE NOTE YOU WILL NOT BE ABLE TO CONTACT THE SURGERY BY
TELEPHONE ON A SATURDAY MORNING AS THE LINE WILL BE
TRANSFERRED TO THE OUT OF HOURS SERVICE

SURGERY TELEPHONE NUMBER
01449 740254 (24hours)

DATES WHEN BILDESTON SURGERY IS CLOSED FROM 1PM.

This includes the Dispensary:-

8th Feb 2018	(Thursday)
7th March 2018	(Wednesday)
25th April 2018	(Wednesday)
24th May 2018	(Thursday)
28th June 2018	(Thursday)
13th September 2018	(Thursday)
10th October 2018	(Wednesday)
15th November 2018	(Thursday)
12th December 2018	(Wednesday)
13th Feb 2019	(Wednesday)
14th March 2019	(Thursday)

BILDESTON CLUBS AND SOCIETIES

Are you the organiser or secretary of a club or society in Bildeston? It could be sports, cultural or any special interest or hobby. Please send your details to the Bugle so we can compile and publish contact details for anyone new to the village, with that interest, may join.

We call on all club secretaries to contact us, for example Carpet Bowls, Lawn Bowls, VIPs, Ladies Club, Rangers Football, Tennis Club, Mother and Toddlers, Running, Cycling, Stamps, whatever! And all the other organisations that go on in the background that we might not be so aware of.

Please contact: **editor@bildestonbugle.co.uk** with the details you would like published on behalf of your club.



**Stowmarket
Chorale**

Music Director: Leslie Olive

Zimbe!
songs of Africa

By Alexander L'Estrange

Accompanied by
Alexander L'Estrange
and his Jazz Quintet

Mass of the Children

By John Rutter

Featuring children from
Rougham Primary School,
Great Finborough Primary School
South Lee School, Bury St Edmunds

Sunday 18th March 2018
4pm

The Apex
Bury St Edmunds

Tickets: £15 adults, £6 concessions

10% discount if booked before 18 February 2018

Box Office: 01284 758000 or www.theapex.co.uk

LAXFIELD HOUSE NURSING HOME

BRENT ELEIGH, Nr LAVENHAM, SUDBURY, SUFFOLK

Situated in a quiet village location with beautiful gardens, offering residential and full nursing care for elderly people.

A highly trained team of nursing sisters and care staff provide excellent nursing care with kindness and compassion, ensuring privacy and dignity at all times.

* Long or short term respite care available *

A warm welcome is always extended to all visitors



All rooms are well appointed with en-suite facilities.
Nurse Call System, Passenger Lifts, Various Public Rooms

This nursing home was established over 25 years ago by the current proprietor and family with ongoing input and management.

**Enquiries to - Mrs J. Carne RGN, RM, (Matron)
Mrs E. P. Knight RGN, RM, Mr N. Knight (Proprietors)**

Telephone (01787) 247340 / 495

**enquiries@laxfieldhouse.co.uk
www.laxfieldhouse.co.uk**



Member of the Registered Nursing Home Association

BASE GARAGE LTD

MONDAY – FRIDAY 7.30 – 6.00

SATURDAY 8.00 – 12.00

- TYRES
- EXHAUSTS
- PUNCTURES
- BATTERIES
- WHEELBALANCING
- AIR CONDITIONING
- LATEST DIAGNOSTIC EQUIPMENT
- WELDING TO MOT STANDARD
- SERVICING & ALL REPAIRS TO ALL MAKES OF CARS
& LIGHT VANS FLEET DRIVERS WELCOME
- MOT CLASS 4, 5 & 7
- COURTESY CAR AVAILABLE
- COLLECTION & DELIVERY SERVICE 5 MILES RADIUS
OF GREAT BRICETT
- WINTER CHECKS
- HOLIDAY CHECKS

£10 OFF!

***YOUR MOT WITH THIS
ADVERT***

LOWER FARM ROAD, GT BRICETT, IPSWICH IP7 7DR

01473 658987 / 01473 657704

Recipe of the Month

Vealentine's Day Chocolate Fondant

with thanks to Chris Lee Head Chef at The Bildeston Crown

Ingredients

- 190 g chocolate
- 160g butter
- 220g caster sugar
- 90g strong plain flour
- 5 medium or 4 large eggs
- some Cocoa powder
- 6 aluminium pudding tins or ramekins



Method

- Heat your oven to 180°C
- Brush the pudding tins or ramekins with softened butter using a brush and upward strokes. Dust to coat with a little cocoa powder to prevent sticking. At The Packhorse Inn we are currently making these in tea cups and serve with a slice of layered chocolate parfait cake which looks like a tea sandwich and chocolate coated iced pate de fruits to resemble sugar cubes.
- Melt the chocolate and butter together in a heat proof bowl placed over a pan of boiling water. Take off the heat and leave to cool a little.
- Beat the eggs in a separate bowl, adding sugar and beating until light and fluffy.
- Combine the egg and the chocolate-butter mixture so they are both in the same bowl
- Sieve the flour into the chocolate mixture and fold until there are no lumps.
- Pour into the prepared moulds and place in the oven for 8-10 minutes
- The fondants should be puffed up, be slightly wobbly but with a crust on top. If serving out of the baking mould, loosen with a palette knife and flip out on to a plate. When cut open it should have a soft oozing middle.



Fish & Fizz Fridays

***New for 2018 – join us for Fish & Fizz
every Friday evening – only £15
per person. Book early to avoid
disappointment***

Tel: 01449 740510

COLLINS & CURTIS MASONRY LTD

est. 1925

Memorial Stone Masons

*Dedicated craftsmen who
combine traditional with new techniques*

Bespoke memorials
Additional inscriptions
Restoration and cleaning
Home visits by appointment

01473 250932
www.collinsandcurtis.co.uk



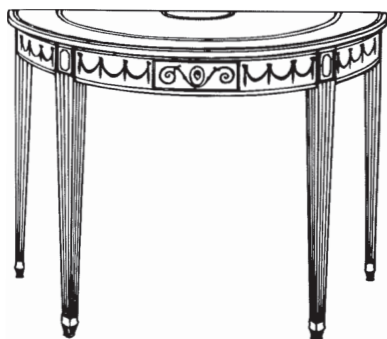
Brook Farm Studio

Bildeston's studio for painting, pottery,
figurative drawing, felt making, crafts
and creative embroidery

Website: www.brookfarmstudio.co.uk
email: brookfarmstudio@gmail.com
Call Hazel 07432 138966/01473 823819

Antique Renovations

The Restoration experts



Lavenham Studios, Brent Eleigh Road, Lavenham
Tell: 01787 248511
www.antique-renovations.co.uk
email - antiquerenovations@live.co.uk

N D ROSE

Int / Ext Decorating

- Decorating
- Wall / Floor Tiling
- Gutters Cleaned /
Repaired / Replaced
- General Building
Maintenance

**Local established tradesman 25
years experience**

**Free estimates good rates
References available**

**Tel: 01787 211042
Mob: 07518 040465
3 Fen Street Boxford CO10 5HL**



01449 744966

info@clayhillcattery.co.uk

www.clayhillcattery.co.uk



LUXURY CAT HOTEL

5-Star family run cattery exclusively for cats

Secure, hygienic all year round boarding

Diets tailored to cat's needs and preferences

Indoor purpose-built luxury suites

Temperature controlled environment designed to be warm and cosy in winter and cool and ventilated in summer

Personal care and attention, a home-from-home for your cat

Recommended by vets

Free grooming, nail clipping and administration of medication

Ample Parking or try our collection and drop-off service

Fully licensed by Babergh District Council

24/7 on-site supervision and CCTV surveillance

Idyllic countryside setting surrounded by wildlife

Visits are encouraged prior to booking to discuss any specific requirements for your cat

Woodside, Clay Hill Lane, Wattisham, IP7 7JS



APRIL COTTAGE CATTERY

April Cottage, Powney Street, Milden, Ipswich. IP7 7AL



Newly opened Licenced Cattery exclusively for cats.



Large light airy chalets with exercise areas overlooking stables and fields.

Quiet areas for shy cats or busy window views for those needing entertainment.

Facilities to cater for elderly cats, kittens or cats with special needs.

All diets catered for (except prescription).

Daily grooming and administering of medicines are free of charge.

Family chalets which can cater for up to 6 cats (same household only).

Pick up and delivery service free up to 5 miles (£1 for every mile thereafter to a maximum charge of £10).

Prices start from £7.50 a day.

Special rates for long stays.



Please call Anne or Kevin on 01787 247302 or 07985 404813

Email: info@april-cottage-cattery.co.uk www.April-Cottage-Cattery.co.uk

www.facebook.com/aprilcottcats

**Now Frying At Market Square
Bildeston**

Thursdays 4pm – 7.30pm

Fridays 11am – 1:30pm



**Local Mobile
Fish & Chip Shop**

**Functions Catered For
Shows • Parties
Weddings • etc.**

**Telephone
01473 830771**

BILDESTON ELECTRICAL

Rewires, Extensions, Board Changes or New Installations

Any Alterations to Existing Installations

(lights, sockets, etc.)

Contact Ian

01449 743664 or 07754 723685

BILDESTON PARISH COUNCIL

DRAFT Minutes of the meeting of Bildeston Parish Council

held on Wednesday 10th January, 2018 in Chamberlin Hall at 7.30 pm

In attendance:

Councillors: R Taylor (Chairman) A Guttridge, A Hubbard, P Hutchings & R Lester.

Also Present: District Councillor M Creffield County Councillor R Lindsay
D Blackburn (Clerk)

The Chairman, Councillor R Taylor, welcomed everyone to the meeting.



C137/17/18 APOLOGIES FOR ABSENCE

Apologies for absence were received from Councillors Bullen and Dempsey.

C138/17/18 DECLARATIONS OF PECUNIARY AND NON-PECUNIARY INTERESTS

There were none.

C139/17/18 DISPENSATIONS IN RESPECT OF PECUNIARY INTERESTS

The following declarations of non-pecuniary interest were made:

Kings Pightle Management Committee – Councillors Hubbard, Lester & Taylor;

Sportsfield Management Committee – Councillors Lester & Taylor;

Parochial Church Council – Councillor Lester;

Chamberlin Hall Management Committee – Councillor Hutchings.

C140/17/18 MINUTES OF PREVIOUS MEETING

It was AGREED: That the minutes of the meeting held on 12th December, 2017 be signed by the Chairman as a correct record.

C141/17/18 DISTRICT COUNCILLOR'S REPORT

Councillor Creffield had circulated a written report on the key issues that had taken place at the District Council over the previous 12 months. He referred to the proposed merger between Babergh and Mid Suffolk District Councils, and assurances now received, that following the current round of public consultation, there would be a local referendum of all the electorate of Babergh to decide whether or not to proceed with plans for a merger between the two Councils. It was also noted that Councillor Creffield had been re-appointed to the Planning Committee.

Councillor Hubbard expressed some disquiet about the consultation process that had been commissioned by Babergh District Council. The company appointed to undertake the telephone survey appeared to be asking those that they spoke to, to recommend someone else that they might call who would be interested in participating in the survey. Members of the Parish Council felt that this could introduce an element of bias into the survey, if people recommended that the company should contact like-minded people.

It was AGREED: That the Clerk raises the Parish Council's concerns with Babergh District Council about the approach that is being adopted to consult with the local community over the proposed merger between Babergh and Mid Suffolk District Councils.

C142/17/18 COUNTY COUNCILLOR'S REPORT

County Councillor Lindsay reported upon the following matters:

a. The ongoing review of free bus travel to schools and the survey accessible via: www.suffolk.gov.uk/schooltravel; which was open until the end of February 2018;

b. An increase to pre-school funding in Suffolk with the County Council passing on more monies to providers from the £2 million it received from central government. This would mean that providers would receive £4 per hour rather than £3.87 per hour with a lesser amount retained by the County Council to cover administrative costs; and

c. Enquiries being made into the installation of an additional bollard on High Street.

C143/17/18 UPDATE ON CURRENT PROJECTS

Further to Minute C129/17/18, the Clerk had ordered a noticeboard for installation on the Clock Tower.

Councillors Guttridge and Hubbard commented on the Christmas tree in the Market Square and that up to a third of the tree was installed below ground level. It was noted that the Parish Council purchased the largest tree available from the supplier, Rougham Estates. Options would be considered to provide a different way of anchoring the tree so that more of it was visible and a report would be submitted to a future meeting.

The cleaning of the War Memorial was being considered ahead of the centenary of the end of the First World War. The guidance issued by Historic England and The War Memorials Trust noted that cleaning should be undertaken with care. As a general rule, memorials should be cleaned primarily for technical reasons – for example to remove soiling which was causing damage. The aim of cleaning should not be to return the memorial to a ‘like new’ appearance, but to safely remove particulate deposits, staining and biological growths. The guidance was that an appropriate cleaning strategy was one that used the mildest and least damaging methods to achieve the desired cleaning effect. This could involve the use of a wire brush, unless a specialist company was engaged to undertake the works. The consensus was that the concrete plinth could be cleaned and weeds removed ahead of Remembrance. The matter would be considered further at a future meeting, after Councillor Hubbard had finished liaising with local stone masons about the services that they could offer.

C144/17/18 ELECTRICAL INSTALLATION IN THE MARKET SQUARE

Further to Minute C128/17/18, the Chairman outlined the estimated costs of improving the electrical installation in the Market Square. The matter was considered by Members of the Parish Council and it was felt, on balance, that a solution should be sought in consultation with local property owners. This was because the upgrade would only be of benefit for the BNatural event and the costs of the upgrade could exceed £3000 and would result in the installation of a further cabinet on the Market Square within the Conservation Area. It was suggested that the Parish Council could offer to assist the organisers of BNatural in finding a solution, if this would help.

C145/17/18 UPDATE ON VILLAGE AMENITIES

Councillor Lester reported that the Kings Pightle Management Committee had received all the expected proceeds from the Henry Morphew bequest and the monies had been deposited in their bank account.

Members of the Parish Council would be attending a site meeting about Grounds Maintenance arrangements at the Sportsfield on Saturday, 13th January, 2018 at 10.00am. It was noted that a “Park Run” had been undertaken at the Sportsfield.

Councillor Hutchings asked about the Parish Council's restricted funds. It was noted that the Parish Council had been appointed to administer various bequests which were held in the John Artiss Nature and Conservation Fund, Margaret Bishop Chamberlin Hall Fund and Kate Chamberlin Clock Tower Fund. The funds were released to support the purposes identified in the bequests. For example, in the case of the Chamberlin Hall, the expenditure on amenities such as white lining of the badminton court and provision of table tennis table was supported from the Fund (with invoices paid by the Parish Council so that VAT could be reclaimed allowing the bequest to go further). With respect to community services at Chamberlin Hall which were initiated or supported by the Parish Council, such as the mobile library service during the summer months, the payment was met from the Parish Council's General Fund.

C146/17/18 CLERK'S REPORT

The Clerk reported that he had commissioned the annual RoSPA inspection of play facilities and it was anticipated that the report would be submitted to the next meeting.

Councillor Dempsey had written to the Parish Council, in his capacity as executor and administrator of Henry Morphew's estate, providing details of the final settlement which included:

- a. £4646.01 for the purposes of engaging a local historian to catalogue, organise and display items relating to the history of the village collected by Mr Morphew; and
- b. £65.00 for the purposes of reimbursing the Parish Council for its contribution to the wake after Mr Morphew's funeral.

A cheque in the sum of £4711.01 had been received by the Parish Council in respect of the above.

It was AGREED: That the Parish Council records its appreciation to Councillor David Dempsey for the substantial amount of work he has undertaken in dealing with the complex legal issues relating to the Henry Morphew Estate and for ensuring that the proceeds are made available to support amenities within the village as stated in Mr Morphew's will.

C147/17/18 BUDGET AND PRECEPT 2018/19

Further to Minute C134/17/18, the Clerk submitted a Budget Book in which was reported:

1. The regulatory framework set out in the Accounts and Audit Regulations for managing the budget and calculating the precept;
2. The risks associated with the preparation of the Parish Council's budget;
3. The changes proposed to the budget compared with previous years; and
4. A three-year summary of income and expenditure for 2016/17, forecast income and expenditure against budget for 2017/18 and the proposed budget for 2018/19.

Members of the Parish Council considered the Budget for 2018/19 and the Precept required to fund it. The consensus was that the Parish Council should continue its approach of applying a modest increase to the Precept each year. The proposal considered at the meeting represented an increase of approximately 5p per week per household.

It was AGREED:

- a. That the Budget for 2018/19 of £24,490 be approved; and
- b. That the Precept for 2018/19 in the sum of £22,370 (being approximately £60.00 per Band D property) be approved.

C148/17/18 AUTHORISATION OF PAYMENTS AND QUARTERLY REPORT FOR THE THIRD QUARTER 2018/19

It was AGREED:

- a. That the following payments be authorised:

Payee	Description	Budget Category	Amount (incl. VAT)
David Blackburn	Clerk's Pay	Salaries & Expenses	£163.06
David Blackburn	Expenses	Salaries & Expenses	£18.00
David Blackburn	Toner Cartridge	Administrative & Legal	£117.29
Adrian Chinery	Grounds Maintenance	Salaries & Expenses	£301.60
Adrian Chinery	Expenses	Salaries & Expenses	£44.00
HMRC	PAYE (to end Dec)	Salaries & Expenses	£679.60
HMRC	Employer Contributions	Salaries & Expenses	£5.07
Rougham Estate Sales	Christmas Tree	Community Events	£234.00
Unity Trust Bank	Bank Transfer	Bank Transfer	£2000.00

(Note: The final item above shall be paid from the Barclays Bank Account).

- b. That the quarterly report for the third quarter of 2018/19 be received.

C149/17/18 PLANNING APPLICATIONS

Planning Appendix A: Planning Applications Consultation

There were none.

Planning Appendix B: Planning Applications Decisions by Babergh District Council

Reference	DC/17/05373
Address	The Rowans Church Farm Bildeston Ipswich Suffolk IP7 7EE
Proposal	Householder Planning Application - Erection of first floor front extension and cart lodge
Decision	Granted

C150/17/18 MATTERS TO BE BROUGHT TO THE ATTENTION OF THE COUNCIL

Councillor Lester asked for a report to be made to Babergh District Council seeking a road sweeper to remove the leaves that had accumulated in the Market Square and up towards Church Road.

Councillor Hubbard reported that a parishioner had suggested to him that the bus stop markings should be re-painted in the Market Square. Members of the Parish Council felt that the painting of bright new lines might detract from the visual appearance of the Market Square and may not be popular with local residents.

Councillor Hubbard had reported to the Environmental Incident Line of the Environment Agency, an oil spillage on Ipswich Road going out of the village which could find its way into the watercourse. It was noted that an absorbent material had been laid on the road to soak up the oil.

C151/17/18 CONFIDENTIAL BUSINESS

It was AGREED: That the public be excluded from the remainder of the meeting in accordance with the Public Bodies (Admissions to Meetings) Act 1960.

The Clerk reported on correspondence that had been received and Members of the Parish Council considered the contents.

It was AGREED: That the Clerk be requested to action the matter in accordance with the comments made at the meeting.

The meeting closed at 9.12pm.

Bildeston Parish Council

Calendar of Forthcoming Meetings 2018

Date	Meetings (other than ordinary meetings)
Wednesday, 14th February, 2018	Parish Council
Wednesday, 14th March, 2018	Parish Council
Wednesday, 11th April, 2018	Parish Council
Wednesday, 25th April, 2018	Annual Parish Meeting of Electors

Notes:

1. All meetings are held at Chamberlin Hall and commence at 7.30pm.
2. Members of the public are welcome to attend and may speak at a meeting on any matter that affects the village.
3. The Annual Parish Meeting is a meeting for all the electors of the village and is not a Parish Council meeting.

David Blackburn
Clerk to the Parish Council

DOG FOULING

***This was sent to the Bugle with a petition signed
by 27 Bildeston residents and passed to the Parish Council.***

A letter to the dog owner/s who leave dog mess on the High Street. Together with most of us who walk along the High Street, we are faced with the frequent dog mess left on the pavement between the Old Post Office and Ipswich Road. As far as we can see, it seems to be the same dog owner/s who leave the mess.

This is a route of course that so many people use, not least the children who walk to school.

We find it difficult to believe that the dog owner/s in question are unaware of the mess that they allow to be left, or that there is any reasonable excuse, particularly given that the Parish Council have provided free bags specifically for use by dog owners.

Are you aware of how annoyed we are about this?

Please stop leaving the mess or we will consider the options in terms of taking the matter further.

Name and address supplied along with petitioners.

SESAW NEWS

Rupert the pig was a baby when he arrived last summer and quickly settled into a routine. Mum lets him out around 5am (he sleeps in a crate in the office like all well mannered porkers) then deals with her emails, by which time he is demanding his breakfast. Yesterday he was strangely quiet and no wonder. There he was, IN the feed bin, helping himself to MY biscuits with only his loin chops showing! We have some lovely cats waiting for new homes including Lunar and Jensen, a friendly family pair who are used to dogs. There are also another four who came in together when their owner died.

The fundraising events start in March with an Easter Gift and Craft Fair on 10th at Whatfield Village Hall and a Book Sale on 24th at Hintlesham & Chattisham Community Centre. Phone 01206 263269 to book a table at our Spring Fair on 22nd April at Long Melford. SESAWEaster Gift and Craft Fair, 11-2pm 10th March, Whatfield Village Hall, IP7 6QU. Exquisite items handmade by skilled crafters, quality bric a brac, books, games, pet products, flowers and plants, refreshments, snacks, raffle, surprise bags.50p entry, free parking. Tables available at SESAWE Spring Fair in Long Melford on 22nd April. Please phone 01206 263269 to book. These are both fundraising events for Suffolk & Essex Small Animal Welfare, reg.charity no.1124029

ANDYS LOGS

Well Seasoned Barn Stored Hardwood Logs

Loads Delivered or Pick Up

Wood cut to size for any Heater

Large bags of wood collection only

CALL ANDY 07881 684687

**Bags of wheat for Chicken feed also available collection only*

J M GARDENING SERVICES

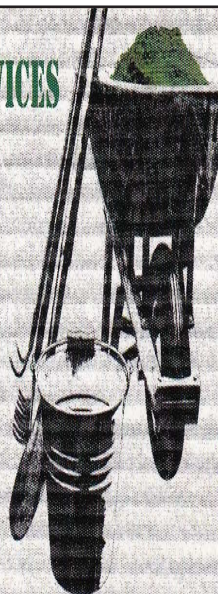
**FOR ALL GARDEN
MAINTENANCE**

NO JOB TOO SMALL

JOHN MORGAN

TEL:07855 855994

johnmorgan007@btinternet.com



Canine Wellbeing At The Pheasantry

Wattisham, Suffolk IP7 7LA

Dog and Puppy Day Creche

We provide a very special service of looking after your dog or puppy. In the comfort of our own home, whilst you are at work, or whilst your dog is recovering from veterinary treatment. Why not allow your puppy to socialise with other canine friends. Daily collection and delivery is available.

D o g s o n H o l i d a y

Whilst you are on holiday, why not let your canine friend have one too. She/he can come and stay in the comfort of our own home, where she/he will be treated as one of the family.

Also available

Canine Hydrotherapy

For more details phone:

01449 740659 mobile 07956286056

or visit our website: www.caninewellbeing.co.uk

BILDESTON RECORDER REQUIRED

SUFFOLK LOCAL HISTORY COUNCIL (SLHC) are looking for someone in Bildeston to take on the role of recording any interesting news or events that take place here in Bildeston.

This could cover a wide range of things such as the annual B Festival / a change of ownership of a village business or even who grew the best rose at the Produce Show.

Of course whoever takes on the roll would not be expected to source the news themselves, it would be up to the various Clubs/Businesses to pass on the information to the Recorder for them to log.

There is no requirement for the recorder to have lived in Bildeston for a certain number of years, as it is only current items (from 2018) that need to be logged.

For more information please contact:

Ashley Hubbard 01449740633 or ashley.hubbard@btinternet.com

GIDNEY **PLUMBING & HEATING**

**Tap Changes, Ball Valves, Shower Pumps,
Water Softeners, Hot Water Cylinders,
Bathroom, Wet room & Kitchen Installs,
Radiator & Valve Replacements,
Underfloor Heating, Heating System Repairs,
Renovation & New Builds.**

**24 Hour Emergency Cover
Professional & Reliable Service**

**07534525263
01449 258254**

**gidneyph@outlook.com
www.plumbinginsuffolk.com**

D J Dunstone Optometry

3 Queen Street, Hadleigh

For your entire eye care needs,
including contact lenses, latest Swept
Source OCT eye scanner, examination of
children and home visits

Frames include: Polo Ralph Lauren, Ray-
Ban, Elle, Paul & Joe and Esprit



To find out more please call in, telephone 01473 823755
or see dunstoneinsight.com

RESEARCH MY ROOTS

Let me build your family tree

If you are looking to trace long lost relatives,
search for a biological parent or just wish to find
out who your ancestors were, please get in touch.

www.researchmyroots.com

ali@researchmyroots.com | Tel : 07704 712643

My name is Ali MacDonald and I have a passion for
Genealogy. I have a diploma in Genealogy and many years
experience in research. If you are looking to trace long lost
relatives, search for a biological parent or just wish to find
out who your ancestors were, please get in touch. My
prices are very competitive and I live in STOWMARKET.

Thanks for reading this and I hope to hear from you!

Please visit my website for more details:

Friendly Experienced
Teacher offers
Individual

MATHS Tuition

Speciality
Confidence Building

KS1 – KS3

Call Colin Plummer on
01449 736918
for details and availability
or email:
colinp52@btinternet.com

Angel Delights

**Outside Caterer &
Specialised Confectioner**

*Weddings – Christenings – Funerals
Birthday Parties - Barbecues - Dinner Parties*

Tradional tea room now open
at 85 high Street Hadleigh

CAKES FOR ALL OCCASIONS

Contact Helen
01473 828191
info@angel-delights.com
www.angel-delights.com

Stuart Walker

Decorating, Painting & Refurbishments



A locally based company offering an honest and reliable service

Painting - Decorating - Refurbishments - Repairs

All work considered indoors & out! Fully Insured & free quotations provided

Please contact Stuart on Tel: 07711 606464 or 01449 740387

Email: stuma1@hotmail.co.uk



****Pilates and Yoga classes now at Kersey Mill****

If you want to exercise both your body and mind as well as improving your sense of well-being, strength, flexibility and mobility then Pilates is for you! We are passionate about bringing the benefits of Pilates/Yoga to everyone and with a highly qualified team of instructors we can certainly help you improve muscle tone and core stability, building strength from the inside out, re-balancing the body and bringing it into correct alignment.

BEGINNERS CLASSES AND FREE TASTER SESSIONS* ARE NOW AVAILABLE AS WELL AS PRIVATE 1:1's

** on selected classes*

We now offer small Yoga classes too to add to your well-being experience at Kersey Mill. Please get in touch if you would like any more information.

Whether you are new to Pilates/Yoga or have been enjoying the benefits for years, we feel confident that we can accommodate your needs to achieve results.



Body Control Pilates is a registered
trademark used under licence

Pilates Works, The Studio, Kersey Mill, Kersey,
www.pilatesworks4u.com | pilatesworks4u@gmail.com

Tel: 01473 823 500 or 07855 394703

THE FLOWER SHOP

Your local independent florist

Creating beautiful
arrangements for
all occasions using
only the freshest,
seasonal flowers

Visit us in store
to view our flowers,
plants and
homeware items,
or order by phone
or online

Local and nationwide
deliveries

• ESTABLISHED 2013 •

www.theflowershopkm.com

THE FLOWER SHOP AT KERSEY MILL Near Hadleigh IP7 6DP

01473 805156

Andrew Bingham

INDEPENDENT FUNERAL SERVICE

Caring, family run funeral service

*Small enough to care,
Large enough to cope.*

www.andrewbingham.co.uk

Award winning 24 hour personal service - qualified & experienced



Bereaved Young

Golden Charter
Funeral Plans



Friends in Bereavement
Support Group



01449 771666

The Nutshell, Milton Road South,
Stowmarket, Suffolk IP14 1EZ





“February Offers”

“Valentine’s Day 14th February!”

1: Valentine’s Special offer ~ Hot Stone Back, neck & shoulder massage

Special Price of £25

2: Valentine Luxury Special offer ~ Elemis Skin Specific Facial 1hr treatment with a Swedish back, neck & Shoulder massage 25mins.

Special Price of only £50

3: Reflexology & Sports Massage available on certain days-

Special Price of only - 30mins £35 - 45mins £45

4: The new Zone Face Lift~ a natural & kinder anti-ageing facial treatment as effective as Botox. (12-week course offered by Gaynor)

Amy, Hayley & Sarah are taking bookings for hair - Please call 07547488587.

***We are taking bookings for our certificated “Beauty courses” please contact our email for more details below. Next course is Makeup.**

The above offers can not be used with another offer.

Please telephone for more information or make a booking on: **01473 829069**

For opening times & brochure please look at our website: www.denzahairandbeauty.com

Email- emmaspraggon@yahoo.co.uk
IP7 6DP.

Address: Kersey Mill, Kersey, Ipswich, Suffolk.





Lent Lunches

Please come and join us for
Lunch

All welcome
From 12 - 2pm

On Tuesday 20th February
At Tankard House
Wattisham Road
Bildeston

RSVP Teresa Lester on 01449 744120



And on Tuesday 27th
February at
Prospects Barn, Nedging
RSVP Deborah Willingale
On 01449 741294



Would you like to paint your own icon? A brilliant course suitable for both beginners and those who have done some icon painting before...

Tutor: Peter Murphy*

Location: Near Hadleigh, Suffolk

Dates: Monday 28th May 2018 to Friday 1st June 2018 inc.

Cost: £320.00 includes tuition and all materials.

This five day icon painting retreat for a maximum of 10 people will utilize specific Byzantine icons as prototypes. Over the course of the week students will learn to gild and paint on a specially prepared wooden panel using a range of traditional medieval techniques and materials. This will include water gilding, with 24 ct loose gold leaf over clay bole for backgrounds and halos and how to use egg tempera paint made fresh each day from free range egg yolks and natural pigments to model robes and figures. All materials including a gessoed wooden panel, gold leaf, gilding tools, brushes and authentic medieval pigments will be supplied. The course is suitable for all levels including beginners.

To book or find out more, please contact:
lizz.a.law@gmail.com or phone 01449 740085

*Peter Murphy was born in Leeds and was educated at the University of East London. He also trained with iconographer Guillem Ramos Poqui in London. He was Vice Chairman of the Society of Tempera Painters and is a member of the British Association of Iconographers for whom he runs workshops. He has been commissioned by a number of churches in the UK and has also been employed by a number of museums and has undertaken three major commissions for Hereford Cathedral. Website: petermurphyicons.co.uk.

**BILDESTON w WATTISHAM,
WHATFIELD w SEMER, NEDGING & NAUGHTON**

SERVICE SCHEDULE – FEBRUARY 2018

December 2018 NB – Services in bold are Benefice Services			
4 th Feb Candlemas	11.00am	Family	Bildeston
11 th Feb Next before Lent	11.00am 11.00 am	Holy Communion	Bildeston
14 th Feb Ash Wednesday	9.30am	Holy Communion	Whatfield
18 th Feb Lent 1	9.30 am 11.00 am 11.00 am	Holy Communion Morning Prayer Lenten Service	Nedging Whatfield Semer
25th Feb Lent 2	11.00 am	Benefice Holy Communion	Naughton

Baptist Church, Duke Street, Bildeston

Jim Haley tel: 01449 740716 email: bildestonbc@gmail.com

Service every Sunday morning at 10:45

Lunch Club: at 12:30 on the **first Wednesday** of each month –

All are most welcome

Community Coffee Centre: Every Friday from 09:15 to 11:30am

Enjoy meeting old and new friends at these events!

‘Craft it Together’ - First Monday of each month at 7:00pm.

Bring along your craft activities and join us for an informal, relaxed evening
share ideas, gain new skills or just enjoy doing your own thing

Drinks provided.

01449 740716 or 01449 741606 for more information

‘Men’s Breakfast’ - last Saturday of each month at 8am



Bildeston Community Coffee Centre

Baptist Church 9:15-11:30 **Every Friday**

Lunch club

Baptist Church 12.15 for 12.30pm start.....**1st Wed every month**

Craft it Together

01449 740716/741606 for details.....**1st Monday every month**

Strollers & Striders

Baptist Church Car Park 10.00.....**Every Monday**

Bildeston Contemporary Choir

Bildeston Primary school 7.00pm.....**Every Monday during term time**

Baby & Toddler Group

Baptist Church 9.15 to 11.30.....**Every Tuesday**

Mens Breakfast

Baptist Church 8.00am.....**Last Saturday every month**

Sinbad the Panto

Chamberlin Hall.....**2nd and 3rd**

Ladies Club Castles of Suffolk

Chamberlin Hall 7.30pm.....**Thursday 1st**

Winter Warmer Ride 5

Market Square 9.30am.....**Sat 10th**

Parish Council Meeting

Chamberlin Hall 7.30pm.....**Wed 14th**

Lent Lunches

Tankard House/Prospect Barn 12 - 2.00pm.....**Tues 20th/Tues 27th**

Please tell us about your forthcoming events in **March**

email: editor@bildestonbugle.co.uk



When you're finished with this Bugle please pass it on or recycle it.