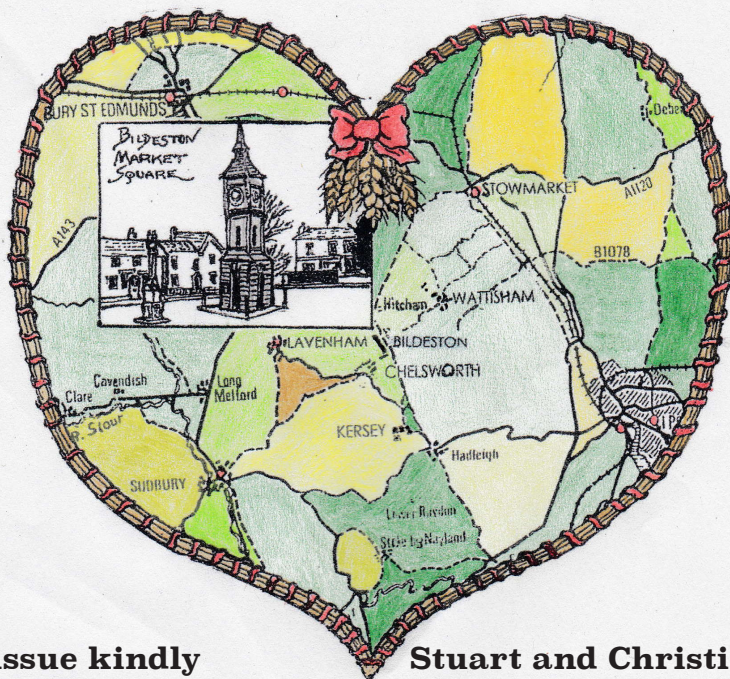


Issue number 320  
**June 2017**



**This issue kindly  
sponsored by -**

**Stuart and Christine Miller  
in celebration of their  
Golden Wedding Anniversary  
Many congratulations**



**Saint Mary's Church, Bildeston, Suffolk.**

**The village magazine produced for the people of Bildeston**



## BILDESTON BUGLE ADVERTISING AND FREE CONTRIBUTION INFORMATION

Our aim is to provide every resident in Bildeston with a magazine which provides information of local interest FREE OF CHARGE. To that end we are required to be efficient in the space we use to print free notices. We endeavour to include interesting items, announcements for events open to the general public for free and items of a charitable nature free of charge. Ongoing free announcements need to be reduced to minimum size or make a contribution towards printing costs. Please check with us before submitting your advert and ALWAYS provide us with all of your contact details in order for us to send a receipt.

email: [editor@bildestonbugle.co.uk](mailto:editor@bildestonbugle.co.uk)

### *Sponsor a 'Bugle' – £15 per issue*

includes a brief message of your choice on the cover of the magazine

### *Advertising Rates*

	1 issue	12 issues (30% disc)	
1/4 page	£3.00	£26.00	65mm W x 92mm H
1/2 page	£6.00	£50.00	134mm W x 92mm H
Full page	£12.00	£100.00	134mm W x 190mm H

#### THE SMALL PRINT

All adverts, payments and items are required before the 17<sup>th</sup> of the month for inclusion in the following month's issue (except December).

The earlier free contributions are received the greater the chance of inclusion.

Please make cheques payable to Bildeston Bugle and send to:

The Editor, Bildeston Bugle, 14 Squirrells Mill Rd, Bildeston IP7 7DY

Receipts cannot be issued without your full postal address.

If we do not receive payment by the 17<sup>th</sup> of the month your advertisement may NOT be included

### **The Bildeston Bugle Management Team is:**

Alan Jacobs (Editor) 01449 741645

Christine Hubbard (Treasurer) 6 Manor Road 01449 740633

Tricia Baldwin (Advertising Revenue)

Angie Biddulph (Bugle Team Liaison)

Stuart Law (Assistant Editor)

Alison Sims (Marketing)

# ED'S COMMENT

Is it really a year since we voted in the Referendum? It all comes back to Einstein's Theory of Relativity, the older you get, the quicker time goes by! OK, he didn't say exactly that, but time is certainly relative in that sense. Remember when you were young and summers seemed to last forever, the sun shone, you played out every day and life, which appeared never ending, stretched way ahead in front of you? The pace of life was also slower. In the time before computers and mobile phones we didn't expect instant information. Chips were something you ate and tablets something you took when you were unwell. Now chips run everything and people seem glued to their tablets or phones, which double up as tablets anyway.

Events also seem to move quicker. So, a year on from the Referendum vote, here we are again, back to the booths for a General Election we were not supposed to have until 2020, and just after the Local Elections in May. No wonder there is the worry that the turnout could be low. However, what was so heartening for anyone who believes in democracy, is that in our little part of the world, right here in Bildeston, part of the Cosford Ward, we enjoyed the highest turnout for the council elections in the whole of Suffolk. Our district's turnout was 47.8%! Across the country the average is far lower than that! On the one hand it is worth congratulating ourselves for that turnout, for the depth of commitment to our area's civic duty but on the other, once again, question to what extent does true democracy really work when less than half the potential voters actually demonstrate their preference. Some countries, Australia for example, make it compulsory to go and vote.

Maybe it's time to also question why we still stick to the tradition of polling on a Thursday, a working day. A tradition that seems to have a range of different reasons. For example some argue it is linked to the fact that Friday was pay day and the fear was people (mainly men before universal suffrage) would drink their pay away and not vote! Others say it was because Thursday used to be early closing in many parts of Britain, or it was Market Day, and it gave people more time to vote. Another reason cited is that by the following day after the election, the result is known which then gives the Prime Minister the full weekend to form a new Government and cabinet.

It doesn't have to be a Thursday. Before the 1930s elections were on various days, in 1931 for example, the election was held on a Tuesday, but that was the last time and since then every election has been held on a Thursday, apart from exceptional circumstances such as the Hamilton by-election of 31 May 1978. This was held on a Wednesday because the returning officer wanted to avoid a clash with the opening game of the 1978 FIFA World Cup!

What about the rest of the week across Europe? Sunday is the most popular by far with these countries choosing it; Austria, Belgium, Croatia, Estonia, Finland, France, Italy, Germany and Greece. Monday is Norway, Tuesday is Denmark, Wednesday is Netherlands, Thursday is us, Friday is Ireland and Saturday is Czech Republic, Iceland and Latvia. The bureaucrats in the European Union were so concerned about this lack of conformity that the European Commission put forward proposals for a common European Polling day, and because of the numbers above, chose Sunday. This proposal was mooted in 2013 but it still hasn't been agreed. These are all national traditions for reasons that must be right for them, long may they continue!



# HONEY BEE'S NURSERY

Hitcham Village Hall, Hitcham, IP7 7NE

**FOR CHILDREN AGED 2 – 5 YEARS**

Open Mon, Wed, Fri 9.15a.m. – 12.15p.m. or 3.15p.m.

Tues, Thurs 9.15a.m. – 12.15p.m.

Early Drop Off – 8.15a.m. Lunch Club Daily until 1.15p.m.

**2 Indoor Rooms and Outdoor Areas**

Ofsted Registered

**Early Years Funding accepted for all 3 & 4 year olds  
With 30 hrs funding available from September 2017**

Contact: Sharon Scarfe 01449 740764 (hall) 01449 740581 (home)

Or visit [honeybeesnursery.co.uk](http://honeybeesnursery.co.uk)

**WANT TO LEARN TO PLAY  
GUITAR, BASS, DRUMS?**

***MANY CONTEMPORARY STYLES COVERED, INCLUDING  
ROCK, METAL, POP, INDIE, BLUES, FUNK AND MORE.***

KEYBOARDS, VOCALS, SONG AND LYRIC COMPOSITION

MOBILE DIGITAL RECORDING SERVICE AVAILABLE



**ADAM KEETON**

GOOD COMPETITIVE RATES

01449 744530 OR 07914 798374

FULL DBS + PROJECT LEADER WITH AMPLITUDE





# Bildeston Primary School

## Suffolk Farm Fair

On Thursday 20 April, children from Years 3 and 4 went to the School Farm Fair at the Suffolk Showground in Ipswich. The day allowed the children to experience many different aspects of farming, food production and the countryside with demonstrations and interactive 'hands on' exhibits. It also enabled pupils to understand the relationship between the crops grown in the fields to the end products found in the shops. Our coach was partially funded by Suffolk Agricultural Association and we would like to thank them for helping us.

## Where the River Runs

The children were able to enjoy an exciting piece of dance theatre created by Full House called "Where the River Runs", a show set in an unknown place deep in the wilderness which was an energetic yet simple story of a brave adventurer on an environmental mission. Children from our collaborated school, Whatfield Primary, were able to share this event with our children.



## Enrichment Design and Technology Event



Four of our children were selected to attend a Design and Technology Enrichment Session hosted by Kersey Primary School on Tuesday 28 March. Children from across our pyramid of schools attended.

## Able Maths Event

Two of our children were fortunate enough to enjoy an able maths session held at Chilton Primary School. They had a rewarding day working with one of the UK's leading maths tutors, Julia Smith. Julia has been running maths workshops privately and in schools for many years and our children gained a great deal from working with her throughout the day.

## Royal Hospital School XC Run

Selected Year 5 and 6 pupils went to the Royal Hospital School to compete in a cross country event on Wednesday 29 March. Children from across the county took part and our children did exceptionally well with William in Year 6 coming 6<sup>th</sup> in his category and Joshua in Year 6 coming in 14<sup>th</sup> position. All of the pupils deserve a special mention though as the course was long!



## British Cycling Mountain Bike Sessions

We have been very fortunate to secure British Cycling UK to run some "Go Ride" sessions at school with our Year 5 children. Go-Ride is British Cycling's development programme for young people. The programme provides a fun and safe way to introduce young riders to the world of cycle sport and provides a platform to improve bike handling skills

## Wattisham Airfield

Hare Class children were invited to the Visitors Day at Wattisham Airfield on Wednesday 3 May 2017. The children had an opportunity to look at an Apache helicopter and other military aircraft. They were also able to walk round and view the exhibits in the military museum, including the small arms display.

## SATs Breakfasts

Due to the success last year of our SATs breakfast club, we offered the same club for our current Year 6 pupils. During the week of their tests they were able to come into school to enjoy some breakfast with their friends. This also gave them the opportunity to get into school on time and to settle ready for their day.

## Netball Tournament

On Monday 15 May a team of our Years 5 and 6 pupils played in a Netball Tournament against the schools in the Hadleigh Pyramid. Several schools took part with fair play and sportsmanship being the theme running through the tournament. We were so proud of our team as they came fourth overall.



**Bildeston Primary School**  
Newberry Road, Bildeston, Ipswich, Suffolk, IP7 7ES  
Telephone: 01449 740269  
Website: [www.bildeston.suffolk.sch.uk](http://www.bildeston.suffolk.sch.uk)



Fundraising for St Mary Magdalene Church, Bildeston

## JUNE COFFEE MORNING TO LOOK FORWARD TO:

**14th June at Joy's house, The Lodge, High Street.**

*(it's down a gravel driveway off the main road - look for the house name on a pillar at the entrance)*

Come and enjoy a cup of **coffee in the garden** if the sun is shining - time to talk, bring anything for Bring and Buy, cakes and any other goodies. **From 10am until midday.**



Learn how to decorate **amazing**  
**cup cakes** at Tina's house,

Christmas Hall, Market Square Bildeston -  
room for about 12 people to have a go, so book your place  
quickly!

Ring or message: 07484 886058

**Thursday 8th June is cup cakes night -  
7.30pm**



**St Mary Magdalene Church  
June 17th @ 7.30pm**

**£10**

**Last Orders Jazz Band + new  
singer**

**Chilli and rice supper  
Bring your own drinks**





# KINGS HEAD & Brewery

Nigel, Susie, Ryan and Freya look forward to welcoming you to the Bildeston Kings Head.

[www.bildestonkingshead.co.uk](http://www.bildestonkingshead.co.uk)

- Here's our **free live music** for **June**: every **Wednesday** is **Open Mic Night** from **8:30pm**; from **9pm** on **Saturday 24<sup>th</sup>** there's a solo performance from the superb **Matt Turner Hook** front man of the Roosters; and from **1pm** on **Sunday 25<sup>th</sup>** have a relaxing lunch accompanied by **Kevin Nightingale** on contemporary classical acoustic guitar.
- Thursday is bar games night, there's all the usual plus **Poker, Skittles** and **table top table football, snooker & tennis**. Our monthly **charity quiz night** is on **Thursday 29<sup>th</sup> June** at 8:30pm, please arrive by 8pm. To book a table telephone Sue/Nigel on 01449 741 434. Thanks to April's teams who raised **£84** for **Addenbrooke's Hospital (Tristan's fund)**.
- Our good value homemade food uses quality ingredients that are locally sourced where possible. We are well known for tasty beer-battered fish & chips, delicious boozy beef pie (Suffolk red poll beef) and our freshly prepared traditional Sunday roasts. Meals are cooked to order, available to eat-in or take-away and in child sized portions. To reserve a table please phone **Sue or Nigel on 01449 741434**.
- We brew our own real ales on-site (tours by arrangement) with at least one other from a local independent brewer.
- Our opening times are as follows:

Wednesday	Open 6pm-12am (open mic/buskin night)
Thursday	Open 6pm-11pm (bar games night)
Friday	Open 4pm-12am (full menu 5-9pm, T/Away 5pm)
Saturday	Open 12pm-12am (full menu 12-2pm & 6-9pm)
Sunday	Open 12pm-10:30pm (roast/Sunday menu 12-3pm)



Karen Finch RHAD FSHAA FRSA

# How's your hearing?

**Take the first step towards better hearing and  
book a hearing test with The Hearing Care Centre!**

Find us locally at:

The Health Centre, **Hadleigh**  
The Country Practice, **Needham Market**  
StowHealth, **Stowmarket**

- Hearing tests ■ Latest digital hearing aids ■ Outstanding aftercare
- Earwax removal ■ Custom made ear protection ■ Home visits

**To book your appointment call 01473 230330**

■ Award Winning ■ Family Run ■ Private ■ Independent ■ Local

[hearingcarecentre.co.uk](http://hearingcarecentre.co.uk)



# COUNTRYSIDE OBSERVER

There is no particular reason why anyone who knows Bildeston as it looks today should know how it looked 60 years ago. Then, Bildeston was a thriving town with numerous shops for villagers and those around. Transport would for most have been by way of a regular bus service, car ownership was still the preserve of the more affluent. Wildlife has also changed. Take the sparrow.



The house sparrow (*Passer domesticus*) is found in most parts of the world. A small bird, it has a typical length of 16 cm (6.3 in). Females and young birds are coloured pale brown and grey, and males have brighter black, white, and brown markings. The

House Sparrow is a familiar bird that has declined sharply and even disappeared from some parts of Britain. The male has a chestnut brown back with black streaks, while the underparts, rump and crown are grey. The nape is chestnut brown, the cheeks are dull white, and they have a black eye stripe and bib. They also have a light wing bar. The beak is a yellow-brown in winter, but black in the summer, and the legs are pale brown. The female is paler and lacks the grey crown, white cheeks, black bib and eye stripe and chestnut brown nape, but has a straw coloured stripe behind the eye. House Sparrows live in colonies around people and so nest in holes or crevices in buildings, or among creepers growing on buildings. The nest is an untidy domed structure of rubbish: paper, straw, string. The eggs are white with grey or blackish speckles, smooth and glossy. They are about 23 mm by 16 mm, and weigh about 3 grams. The male and female take turns incubating the eggs, but the female does most of the incubating. Both adults feed the young. This sparrow is native to most of Europe, the Mediterranean and much of Asia. Its intentional or accidental introduction to many regions, including parts of Australia, Africa, and the Americas, make it the most widely distributed wild bird. The sparrow is strongly associated with human habitations, and can live in urban or rural settings. Though found in widely varied habitats and climates, it typically avoids extensive woodlands and grasslands. It feeds mostly on the seeds of grains and weeds, but is an opportunistic eater and commonly eats insects and many other foods. Its predators include domestic cats, hawks and owls. Sparrows will eat just about anything, sunflower hearts, high energy seed, peanuts, suet, kitchen scraps, etc. In fact, research in the 1940's found 838 different types of food in the dissected stomachs of house sparrows. During the spring, House Sparrows often damage plants with yellow flowers, such as crocus, for reasons that are not yet known. Their song is simply an incessant collection of their calls, which comprise various cheeps and chirps. These cheerful exploiters of man's rubbish and wastefulness, have managed to colonise most of the world. The ultimate avian opportunist perhaps. Monitoring suggests a severe decline in the UK house sparrow population, recently estimated as dropping by 71 per cent between 1977 and 2008 with substantial declines in both rural and urban populations. Whilst the decline in England continues, breeding bird survey data indicate recent population increases in Scotland, Wales and Northern Ireland. The Sparrow is a bird with a pretty dull plumage, but our streets and gardens would be all the poorer were it not for their cheerful cheeping and darting flight to and from our gardens. **Mike Biddulph**

# ***The Vegetarian Red Lion***

***Under new management and  
offering an exciting new menu!***

---

***Located in Gt Bricett, IP77DD***

---

***Dogs Welcome!***

---

***Tel: 01473 657 863  
www.vegredlion.co.uk***



*Proud to be different*

On Line Prices High Street Location

*Jacobs & Brown*

**Sellers pay only £575.00 or £995.00 when sold**

- We advertise your property on Rightmove, Zoopla, Primelocation, Times24, Telegraph other social media, also local publications & Newspapers!
- Contact us from 9am to 9pm! Great customer service, weekly updates for sellers & buyers!

**PROPERTY OF THE WEEK!!!!**

**Unique stunning Period Home in Hadleigh - Offers invited over £780,00.00**



**URGENTLY REQUIRED**

**BUYERS** Mrs E wants 3 Bedroom Hadleigh/ Village nearby    Mr R wants 2/3 Bedroom Hadleigh/ Village nearby  
**RENTALS** Mrs D wants 2 Bedroom Hadleigh    Miss K wants 1/2 Bedroom Hadleigh    Mrs D wants 3 Bedroom Hadleigh/ Village nearby

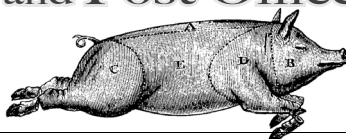
**Pop in & see us Ground Floor Office, Victoria House, 1a Queen Street, Hadleigh IP7 5DZ  
Tel: 01473 760701**

**www.Jacobsandbrown.co.uk**

# BANK HOUSE STORES

and Post Office

Richard & Joan  
O'Sullivan



telephone  
01449 740403

**Shop locally - and help keep Bildeston beautiful!**

At Bank House Stores you can buy a lottery ticket, post a parcel, get cash, pay some bills, buy fresh croissants and baguettes - **and pay the Dartford Crossing charge - 7 days a week!**

We are open as usual over the Bank Holiday with full Post Office services every day.

Check out our special offers, available up to 3rd June:

Volvic Mineral Water	6 x 33 cl	Only £1.25
Monster	500ml Cans	2 for £2
Tetley Tea Bags	80-Pack Half Price	Only £1.32
Andrexx Toilet Rolls	4-Pack	Only £1.75
Kellogg's Special K/Rice Krispies		Only £2
I Can't Believe It's Not Butter	500g	Only £1
Napolina Pastas	500g	Only £1
Walkers Crisps	14-Pack	Only £1.79
Surf Powder	2.66kg Less Than Half Price	Only £4
Mr Kipling Cakes		Only £1
Kumala Zenith South African Wines		Only £5.29
Jacob's Creek Australian Wines		Only £4.99
Bacardi/Absolut Vodka		Only £15.49

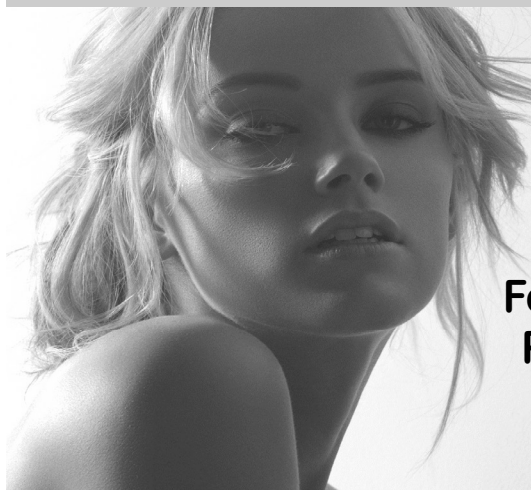
.....plus many, many more.

**We are open from 7am to 7pm (6.30 for the Post Office - 6 o'clock on Wednesdays) Monday to Saturday and 8.00 to 12.00 every Sunday and Bank Holidays.**

**Shop Locally - you need a jolly good reason not to!**

# Studio 66

*Ladies and Gents Hairdressers*



**Restyling**

**Foils & Highlights**

**Perms & Colours**

**Shampoo & Sets**

**Cut & Blow Dries**

**Friendly Service from our Professional Team**

**Tue & Wed Senior Citizens**

**\*\*\*special rates \*\*\***

**Opening Times Tues - Friday 9 - 5 pm Sat - 8 - 1pm**



**Tel 01449 740644**

**52A High St Bildeston IP7 7EA**



We began our AGM with the presentation of a cheque for £290 to our chosen charity EACH . Natasha told us of the work done to support hundreds of youngsters and their



Then it was on to the business of the evening. Mary Ruffell and Ann Shirley stepped down from the committee in their roles as Chairperson and Secretary and were thanked for their service to the club for over 20 years.

Chairperson - Jo Silburn 740504, Secretary - Jean Radley 743650,  
Treasurer - Marion Davies, Raffle sales – Pauline Rampling, Christmas meal –  
Ann Shirley & Mary Ruffell, committee member – Tricia Baldwin.

An outline of next year's programme was discussed and ideas for events in the future proposed. It was also decided to raise money in the year ahead for SARS (Suffolk Accident Rescue Service) -local Doctors and paramedics who provide medical assistance in emergencies. The evening ended with a superb spread of treats for us to share. ( We will worry about the diets later !)

Our next meeting on June 1<sup>st</sup> is a trip to Kersey Mill – meet in the carpark at 7p.m for shared transport. Normal Club fee will apply and £5 for refreshments at The Copper Kettle.

page 13 – issue 320– June 2017

# THE BUGLE NEEDS SOME HELP

*Have you some spare time, just once a month. to join our marvellous Bugle team? We need someone to do the Brookfield delivery of 90 Bugles. We also need help on the collating side, particularly during the summer to cover holidays. For more information and to volunteer please contact Angie Biddulph on 01449 740547 Many thanks*



*Six Acre Productions Presents.....*

*Raising money for The Suffolk Community Foundation*

*Sherlock Holmes*  
*in*

*The*  
*Seven Wooden*  
*Figurines*

*A new Murder Mystery*  
*Written by*  
*Tom Hitchcock*

*30<sup>th</sup> June and 1<sup>st</sup> July*  
*7<sup>th</sup> and 8<sup>th</sup> July*  
*Manor Farm,*  
*Semer*

*Tickets £12*  
*Including supper*

Contact  
**07508472142**  
[sixacreproductions@live.co.uk](mailto:sixacreproductions@live.co.uk)  
[www.sixacre.webs.com](http://www.sixacre.webs.com)

Proudly sponsored by

 **elmsett storshops**

# COUSINS & SON BILDESTON LTD

available to carry out all your building requirements  
from  
**Renovations / Alterations / Extensions**  
to  
**General Repairs**

Please contact Paul for a free estimate

01473 658919 or 07876 244461

or email [paul.cousins268@btinternet.com](mailto:paul.cousins268@btinternet.com)



## Paul's Carpentry

**All Carpentry projects considered large  
or small**

**Decking, Garden Rooms, Wardrobes,  
Shelving, Children's play houses and  
tree houses.**

**Mobile: 0779 234 0365**

**Tel: 01449 616 888**

**email: [paulhb100@gmail.com](mailto:paulhb100@gmail.com)**

**[www.carpentryservicesinsuffolk.co.uk](http://www.carpentryservicesinsuffolk.co.uk)**

**ARE YOU LOOKING FOR LOTS OF  
FUN AND GOOD FOOD & DRINK?  
THEN COME TO JOIN US AT OUR  
SUMMER FETE**

**Fun**

**Giant Bouncy slide**      **Face painting**      **Giant**  
**sand pit**      **Real life Digger!**      **Beauty Salon**  
**Shopping Stalls**

**Bildeston Primary School**  
**PTFA Summer Fete**  
**Saturday 15<sup>th</sup> July 12pm -**

**Competition**

**Make a Fairy/Elf Garden**      **Raffle**      **Nerf**  
**Shooting**      **TOMBOLA**      **Make a**  
**Duplo/Lego model**

**Refreshments**

**Bountiful Bar**      **Beautiful BBQ**  
*Cool Cakes*      **ICY ICE-CREAMS**

**And Much Much More!**

**BILDESTON CARPET BOWLS CLUB**

On **Tuesday the 6th & 13th of June** the club will be holding sessions for you to try out carpet bowls. Both sessions are free and players will be on hand to give advice on the rules and object of the game. The club meets in the Chamberlin Hall at **7-15 for a 7-30pm** start.

Refreshments also provided.



- ❖ Home Maintenance
- ❖ Carpentry
- ❖ General Building Work
- ❖ Brickwork & Blockwork
- ❖ Stonework
- ❖ Hand Built Sheds
- ❖ Floor & Wall Tiling
- ❖ Paving & Patios
- ❖ Kitchens & Wardrobes
- ❖ Pergolas
- ❖ Carpentry
- ❖ Bespoke Fencing
- ❖ Property Maintenance
- ❖ Repairs
- ❖ Advice & Planning
- ❖ Shop & Office Fitting
- ❖ Renovation Work



**Bob Buckle**  
Carpentry & Building Services

**Bildeston - Suffolk.**

**For a prompt & reliable service.**



**01449 740275 or 07580 753020**  
**Email: bobbuckle10@gmail.com**

## Green Farm Vintage China

### Hire


*A large range of pretty vintage china and glass to hire for all occasions, including tea parties and weddings.*

*With every order 20% will be donated to the charity of your choice.*

*For more information, please contact*

*Carole Homer:*

*Tel:* 01449 741498

*Mobile:* 07879265756 

*Email:* [carole.homer@btinternet.com](mailto:carole.homer@btinternet.com)

## **Dentist**

**Paul Rolfe BDS**

**Veneers & Crowns in a  
single visit**

**Dental Implants**

**Family Dentistry**

**Lavenham &  
Long Melford**

**01787 882722**

[www.paulrolfedental.co.uk](http://www.paulrolfedental.co.uk)

# All Seasons marquees

*Let us help you to make yours an event to remember*

Modern Marquees in a range of sizes

Free no obligation site visit

Heating • Lighting • Furniture • Flooring

Dance Floors • Staging • Linings

Generators • Toilets

Tel Ipswich: 01473 559978

[www.allseasonsmarquees.co.uk](http://www.allseasonsmarquees.co.uk) [info@allseasonsmarquees.co.uk](mailto:info@allseasonsmarquees.co.uk)



# NEW REVISED ROTA FOR HEALTH CENTRE

	MONDAY	TUESDAY	WEDNESDAY	THURSDAY	FRIDAY
DR HAINSWORTH					
Open surgery	08.30-10.30	08.30-10.30	08.30-10.30	NOT IN SURGERY	08.30-10.30
BY APPOINTMENT	4.00-5.50	4.00-5.50	2.00-3.50		4.00-5.50
DR CLARK					
Open surgery	08.30-10.30	08.30-10.30	08.30-10.30	08.30-10.30	NOT IN SURGERY
BY APPOINTMENT	4.00-5.50	4.00-5.50	4.00-5.50	2.00-3.50	
DR BEALE					
Open surgery	08.30-10.30	08.30-10.30	NOT IN SURGERY	08.30-10.30	08.30-10.30
BY APPOINTMENT	4.00 - 5.50	2.00-3.50		2.00 - 3.50	4.00-5.50
MR BREWER ADVANCED NURSE PRACTITIONER					
Open surgery	8.30-10.30	8.30-10.30	8.30-10.30	8.30-10.30	8.30-10.30
BY APPOINTMENT	2.00 - 4.00	NOT IN SURGERY	2.00-4.00	4.00-6.00	4.00-6.00
PRACTICE NURSE BY APPOINTMENT ONLY	0900-12.30 2.00-3.30 4.00-5.40	09.00-12.30 2.00-3.30 4.00-5.40	09.00-12.30 2.00-3.30 4.00-5.40	09.00-12.30 2.00-3.30 4.00-5.40	09.00-12.30 2.00-3.30 4.00-5.40
PHLEBOTOMIST HEALTH CARE ASSISTANT	0900-11.00 2.00-3.20 4.00-5.45	09.00-11.00 2.00-3.20 4.00-5.45	8.45-11.00 2.00-3.20 4.00-5.45	8.45-11.00 2.00-3.20 4.00-5.45	8.45-11.00 2.00-3.20 4.00-5.45

**Dispensary 08.30 til 1pm (closed for lunch)**

**2pm til 6pm**

**Saturday 9am til 12noon**

**SATURDAY SURGERY**

**09.00 - 12.00**

**PRE BOOKED APPOINTMENTS ONLY**

PLEASE NOTE YOU WILL NOT BE ABLE TO CONTACT THE SURGERY  
BY TELEPHONE ON A SATURDAY MORNING AS THE LINE WILL BE  
TRANSFERRED TO THE OUT OF HOURS SERVICE

**SURGERY TELEPHONE NUMBER**

**01449 740254 (24hours)**

# BASE GARAGE LTD

**MONDAY – FRIDAY 7.30 – 6.00**

**SATURDAY 8.00 – 12.00**

- TYRES
- EXHAUSTS
- PUNCTURES
- BATTERIES
- WHEELBALANCING
- AIR CONDITIONING
- LATEST DIAGNOSTIC EQUIPMENT
- WELDING TO MOT STANDARD
- SERVICING & ALL REPAIRS TO ALL MAKES OF CARS  
& LIGHT VANS FLEET DRIVERS WELCOME
- MOT CLASS 4, 5 & 7
- COURTESY CAR AVAILABLE
- COLLECTION & DELIVERY SERVICE 5 MILES RADIUS  
OF GREAT BRICETT
- WINTER CHECKS
- HOLIDAY CHECKS

***£10 OFF!***

***YOUR MOT WITH THIS  
ADVERT***

**LOWER FARM ROAD, GT BRICETT, IPSWICH IP7 7DR**

**01473 658987 / 01473 657704**



**COLLINS & CURTIS**  
**MASONRY LTD**

est. 1925

**Memorial Stone Masons**

*Dedicated craftsmen who  
combine traditional with new techniques*

Bespoke memorials  
Additional inscriptions  
Restoration and cleaning  
Home visits by appointment

**01473 250932**  
**[www.collinsandcurtis.co.uk](http://www.collinsandcurtis.co.uk)**



**CPH GARDEN SERVICES**

All Jobs Considered, Large & Small

Fencing  
Painting & Decorating  
Patos, Decking & Pathways  
Grounds Maintenance  
Garden Clearance

Please contact us to discuss your  
needs and obtain a no obligation quotation.

Telephone: Paul - [01449 740020](tel:01449740020)  
Telephone: Chris - [01787 210536](tel:01787210536)  
Email: [chris.harman1990@gmail.com](mailto:chris.harman1990@gmail.com)

Canine Wellbeing At The Pheasantry  
Wattisham, Suffolk IP7 7LA

**Dog and Puppy Day Creche**

We provide a very special service of looking after your dog or puppy. In the comfort of our own home, whilst you are at work, or whilst your dog is recovering from veterinary treatment. Why not allow your puppy to socialise with other canine friends. Daily collection and delivery is available.

**Dogs on Holiday**

Whilst you are on holiday, why not let your canine friend have one too. She/he can come and stay in the comfort of our own home, where she/he will be treated as one of the family.

**Also available**

**Canine Hydrotherapy**

For more details phone:  
**01449 740659 mobile 07956286056**  
or visit our website: [www.caninewellbeing.co.uk](http://www.caninewellbeing.co.uk)

# BARGEWELL SKIP HIRE

2 - 8 yard skips

1 ton waste bags

We also collect any full waste bags

Long or short term hire

Delivery 7 days a week

Fast & friendly service

**Stowmarket 01449 615056**

Mobile: 07770 452378

High Rd, Gt Finborough, Stowmarket, Suffolk

[www.bargewellskiphire.com](http://www.bargewellskiphire.com)

Credit cards accepted

## CHIMNEY SWEEP

### ECO SWEEP

#### CHIMNEY SERVICES

NEW POWER SWEEPING METHOD USED  
FOR A MORE THOROUGH CHIMNEY CLEAN  
THAN BRUSHES.

INDUSTRIAL HEPA FILTERED VACUUM.

FULLY INSURED.

INSURANCE RECOGNIZED CERTIFICATES ISSUED.

SPOTLESS, RELIABLE AND FRIENDLY SERVICE.

ALL CHIMNEYS, WOOD BURNERS, AGA, BOILER  
FLUES SWEPT.

GUILD OF MASTER SWEEPS CERTIFICATED MEMBER.



#### Power sweeping



**TEL. 01359 232335**

We had a wonderful turnout to the free taster session of Zumba Gold on Thursday 11th May – a fantastic group of ladies attended and seemed to really enjoy the session too! Zumba Gold is a dance fitness class aimed at the older active adult or people new, or returning to exercise. You still have the lively Zumba music and moves but at a slower pace with no impact, making it suitable for everyone.



The Zumba Gold classes are being offered as part of the Fit Villages Project run by Suffolk Sport, where they work with an instructor to bring fitness to rural areas. The idea is that at the end of the 9 week project, the classes are established and continue to run for the benefit of the community.

The regular sessions start on **Thursday 25<sup>th</sup> May** and run through until **Thursday 20<sup>th</sup> July at 2pm in Chamberlin Hall** (*with the exception of 8<sup>th</sup> June as the hall will be used for the General Election*). Classes during this period will be subsidised by Suffolk Sport and cost only £4.

Should the classes be successful, they will carry on each week after 20<sup>th</sup> July. The on the door class cost will be £4.50 per session, but I will offer the opportunity to purchase a 10 class card for only £40 to enable you to keep the £4 per week price should you wish.

You are welcome to just turn up to any of the sessions- come and give it a try! I look forward to seeing you on 25<sup>th</sup> May! Sarah Tel: 07979496494



## **NEW ZUMBA GOLD class**

**Starts: Thursday 25<sup>th</sup> May 2.00pm  
at Chamberlin Hall, Bildeston**



- ✓ ***Improve muscle strength, balance, co-ordination and much more!***
- ✓ ***Great for both physical and mental wellbeing***
- ✓ ***Easy and FUN – ANYONE CAN DO IT!***

**Contact Sarah: 07979496494**



**FREE**  
admission



# BILDESTON



## Family Funday & Dog Show



BBQ

Live Bands

Bar

The Bildeston Barrow

Prize Draw

Bouncy Castle Sweet Tombola

Wellie Throwing Café & Cakes

Stalls and much, much more

**Sunday 30<sup>th</sup> July 2017 12.30 - 4.30pm**

@Bildeston Sportsfield, Consent Lane, Bildeston

We need your donations :

- Draw Prizes
- Homemade Pickles, Jams and Cakes
- Wine
- **Home Grown Plants & Produce**

Volunteers needed - Join our band of Happy Helpers

For more information contact, Shaun 01449 257136

All profits in aid of renovating the Bildeston Sportsfield Pavilion patio.



find us on Facebook





## Kings Pightle Nature Reserve News

A big thank you to our sponsors for keeping the birds fed at the hide. We are still seeking more people if any of you would like to join them we suggest a donation of £20.00. Your name can be added to the Friends Board which we will go in the hide or you can remain anonymous. The birds are busy with young to feed so there is plenty to see at the hide. Around the rest of the reserve things are changing too, we now have at least 6 bat boxes made by Norman

Ruffle and Stuart Miller in place so with the lighter and warmer evenings the bats will hopefully find more roosting sites. Thank you to everyone who tops up seed and looks after the nature reserve especially our volunteer warden Chris Powell. A damaged plank on the bridge was reported and has now been replaced thanks to Ashley Hubbard.

**COME & FIND OUT MORE BY JOINING COMMITTEE  
MEMBERS AND VOLUNTEERS ON OUR ANNUAL BALSAM  
BASH Sunday 16<sup>th</sup> JULY**

This will be followed by a

### BBQ

(bring your own meat etc to  
bbq - BBQ drum and charcoal  
provided)

Drinks & Cakes available to  
buy, all proceeds will go to the  
birdseed fund.

You don't have to bash to join in the BBQ FUN –  
Full details in July's Bugle

For more information Elaine Talbott 01449 740721 or [elainetalbott@hotmail.co.uk](mailto:elainetalbott@hotmail.co.uk)



© Can Stock Photo - csp17711953



[www.clipartof.com](http://www.clipartof.com) · 440463

## THANK YOU

*Jim Talbott, of KeepBildeston Beautiful, has purchased a large electric hot water urn for the village, he has named the urn 'Alethea'. Anyone who would like to borrow 'Alethea' for village events can contact Nicola on 07766393379. After all, our wonderful village events do help to Keep Bildeston lively and beautiful!!*



# **LAXFIELD HOUSE NURSING HOME**

## **BRENT ELEIGH, Nr LAVENHAM, SUDBURY, SUFFOLK**

Situated in a quiet village location with beautiful gardens, offering residential and full nursing care for elderly people.

A highly trained team of nursing sisters and care staff provide excellent nursing care with kindness and compassion, ensuring privacy and dignity at all times.

**\* Long or short term respite care available \***

A warm welcome is always extended to all visitors



All rooms are well appointed with en-suite facilities.  
Nurse Call System, Passenger Lifts, Various Public Rooms

**This nursing home was established over 25 years ago by the current proprietor and family with ongoing input and management.**

**Enquiries to - Mrs J. Carne RGN, RM, (Matron)  
Mrs E. P. Knight RGN, RM, Mr N. Knight (Proprietors)**

**Telephone (01787) 247340 / 495**

**[enquiries@laxfieldhouse.co.uk](mailto:enquiries@laxfieldhouse.co.uk)  
[www.laxfieldhouse.co.uk](http://www.laxfieldhouse.co.uk)**



**Member of the Registered Nursing Home Association**

**BILDESTON COMMUNITY CYCLING**  
**HAVE YOU GOT A BIKE IN THE SHED?**  
**WHY NOT JOIN OUR**  
**TUESDAY EVENING RIDES**

All rides start at 6.45pm from the Market Square, lasting about an hour. There will be two groups of riders.

**A SLOW RIDE, starting at 6 to 8 miles**, specifically for new and returning riders, at a speed to suit the riders. Walking on hills is definitely allowed, and no Lycra is necessary!

**A REGULAR RIDE of 12 -15 miles** for more confident riders.

**If you used to cycle, or want to start, why not join us this year? Just turn up at the Market Square.** Warm clothing and lights may be needed!

If you have any queries, please contact **Robin Weaver on 01449 741048.**

We regret no children under 12, no unaccompanied children under 16.



**A & P**

**WINDOW CLEANERS.**

**Providing a friendly, reliable and efficient service since 1995.**

**Andy: 01449 722680. Paul: 01473 604714.**

**Mobile: 07711 381919.**

**FULLY INSURED.**

**With over 50 years of Traditional Window Cleaning experience,  
we're at the top of our Profession!**

The homemade  
music festival

1st/2nd/3rd  
SEPTEMBER

# B NATURAL FUN(D)RAISER! GARAGE SALE

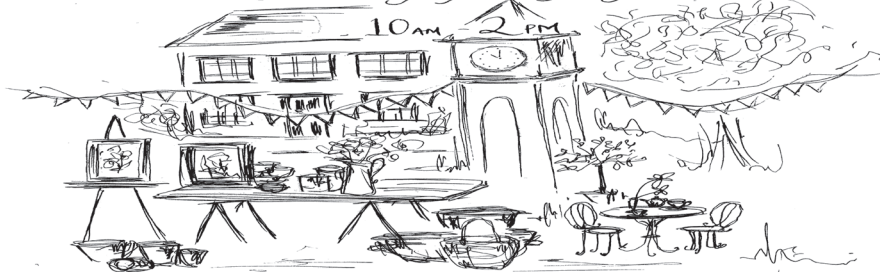
**Saturday 17th June**  
9am - 1pm

**Just £5** to sell from your garage or garden,  
or take a table in the Square

To participate or get more information,  
please contact **Suzanne Clements**  
jsclements133@hotmail.com  
**07912 389739**

## The Billdeston Brocante

SUNDAY 9TH JULY



Home & garden collectables • vintage  
• fashion & accessories • French Cafe  
all set in our pretty market square

summerbrocante@yahoo.co.uk • 07766393379

Keep Billdeston beautiful

# Recipe of the Month

## Wild Garlic Risotto with Morels, Girolles and Asparagus

*with thanks to Chris Lee Head Chef at The Bildeston Crown*

---

### Ingredients

- 500g of risotto rice
- 4 shallots diced
- 600ml of good quality vegetable stock
- 100g grated Parmesan
- Truffle oil – to taste
- 1 bunch each of white and green asparagus, peeled and blanched
- 200g morels
- 200g girolles
- 200g shimeji mushrooms
- 500g wild garlic
- 100g mascarpone
- Butter/seasoning



### Method

#### Risotto

- Sauté off the shallots in a little butter until soft and transparent; add the risotto rice and heat for 30 seconds but do not let the rice burn though. A little at a time add the 500ml stock stirring constantly. Add stock until the rice is cooked but not wet. Season the risotto to taste, take off the heat and cool.

#### Wild garlic purée

- Pick and wash 400g of the wild garlic. Melt 100g butter in a pan. Add the wild garlic when the butter is hot and foamy; stir until wilted. At this point you need to make sure that you have a blender and sieve ready. Add 100ml of vegetable stock to the pan and bring to the boil. As soon as it boils take off the heat blend and pass. Cool immediately to keep its green colour. Wild garlic is currently in season but if cooking out of season, and it is a short one, we suggest you use puréed spinach with garlic as an alternative.

#### Assembly

- When ready to serve, heat the risotto in a pan with a little water; add the wild garlic purée. Stir this with a spatula so not to break the risotto rice down. When hot, season to taste and add the mascarpone, truffle oil and parmesan to enrich the flavour. In a separate pan heat equal amounts of water and butter to create an emulsion, add to this the wild mushrooms, the hardest ones first, then the asparagus and the remaining 100g of wild garlic leaves. Simmer this until all cooked, season, plate and enjoy.





**LAVENHAM VILLAGE HALL**  
**PLANT SALE**  
 ON LAVENHAM OPEN GARDENS DAY

**11th June**  
**10am - 4pm**

**ENTRY**  
**£1**  
 Entry proceeds  
 donated to charity

Lavenham Village Hall, Church Street, Lavenham CO10 9QT  
 Telephone: 01787 248599 E-mail: lavenhamvh@btconnect.com

**Antique**  
**Renovations**

The Restoration experts



Lavenham Studios, Brent Eleigh Road, Lavenham  
 Tell: 01787 248511  
[www.antique-renovations.co.uk](http://www.antique-renovations.co.uk)  
 email - [antiquerenovations@live.co.uk](mailto:antiquerenovations@live.co.uk)



All carpentry & home improvements  
 including kitchens, bathrooms,  
 doors, fencing, decking, floors,  
 roofing and much more...

Tel: 07881 360 650  
 Email: [info@bullcc.co.uk](mailto:info@bullcc.co.uk)

[www.bullcc.co.uk](http://www.bullcc.co.uk)

**N D ROSE**  
 Int / Ext Decorating

- Decorating
- Wall / Floor Tiling
- Gutters Cleaned /  
 Repaired / Replaced
- General Building  
 Maintenance

**Local established tradesman 25**  
**years experience**  
**Free estimates good rates**  
**References available**

Tel: 01787 211042  
 Mob: 07518 040465  
 3 Fen Street Boxford CO10 5HL





01449 744966

[info@clayhillcattery.co.uk](mailto:info@clayhillcattery.co.uk)

[www.clayhillcattery.co.uk](http://www.clayhillcattery.co.uk)



## LUXURY CAT HOTEL

5-Star family run cattery exclusively for cats

Secure, hygienic all year round boarding

Diets tailored to cat's needs and preferences

Indoor purpose-built luxury suites

Temperature controlled environment designed to be warm and cosy in winter and cool and ventilated in summer

Personal care and attention, a home-from-home for your cat

Recommended by vets

Free grooming, nail clipping and administration of medication

Ample Parking or try our collection and drop-off service

Fully licensed by Babergh District Council

24/7 on-site supervision and CCTV surveillance

Idyllic countryside setting surrounded by wildlife

*Visits are encouraged prior to booking to discuss any specific requirements for your cat*

Woodside, Clay Hill Lane, Wattisham, IP7 7JS



# APRIL COTTAGE CATTERY

**April Cottage, Powney Street, Milden, Ipswich. IP7 7AL**



## Newly opened Licenced Cattery exclusively for cats.



**Large light airy chalets with exercise areas overlooking stables and fields.**

**Quiet areas for shy cats or busy window views for those needing entertainment.**

**Facilities to cater for elderly cats, kittens or cats with special needs.**

**All diets catered for (except prescription).**

**Daily grooming and administering of medicines are free of charge.**

**Family chalets which can cater for up to 6 cats (same household only).**

**Pick up and delivery service free up to 5 miles ( £1 for every mile thereafter to a maximum charge of £10).**

**Prices start from £7.50 a day.**

**Special rates for long stays.**



**Please call Anne or Kevin on 01787 247302 or 07985 404813**

**Email: [info@april-cottage-cattery.co.uk](mailto:info@april-cottage-cattery.co.uk) [www.April-Cottage-Cattery.co.uk](http://www.April-Cottage-Cattery.co.uk)**

**[www.facebook.com/aprilcottcats](https://www.facebook.com/aprilcottcats)**

**Now Frying At Market Square  
Bildeston**

**Thursdays 4pm – 7.30pm**

**Fridays 11am – 1:30pm**



**Local Mobile  
Fish & Chip Shop**

**Functions Catered For  
Shows • Parties  
Weddings • etc.**

**Telephone  
01473 830771**

# **BILDESTON ELECTRICAL**

**Rewires, Extensions, Board Changes or New Installations**

**Any Alterations to Existing Installations**

**(lights, sockets, etc.)**

**Contact Ian**

**01449 743664 or 07754 723685**

# BILDESTON PARISH COUNCIL

## DRAFT Minutes of the meeting of Bildeston Parish Council

held on Tuesday 9th May, 2017 in Chamberlin Hall at 7.30 pm

### In attendance:

Councillors: R Taylor (Chairman), D Dempsey A Guttridge P Hutchings  
A Hubbard R Lester

Also Present: District Councillor M Creffield D Blackburn (Clerk)

### C01/17/18 ELECTION OF CHAIRMAN

**It was AGREED:** That Councillor R Taylor be elected Chairman of the Parish Council for the municipal year 2017/18.

### C02/17/18 ELECTION OF VICE-CHAIRMAN

**It was AGREED:** That Councillor A Guttridge be elected Vice-Chairman of the Parish Council for the municipal year 2017/18.

### C03/17/18 APOLOGIES FOR ABSENCE

An apology for absence had been received from Councillor P Bullen.

### C04/17/18 DECLARATIONS OF PECUNIARY AND NON-PECUNIARY INTERESTS

The following declarations were made:

Kings Pightle Management Committee – Councillors Hubbard, Lester & Taylor;

Sportsfield Management Committee – Councillors Lester & Taylor;

Parish Council's representative on the Parochial Church Council – Councillor Lester; and

Parish Council's representative on the Chamberlin Hall Management Committee – Councillor Hutchings

### C05/17/18 DISPENSATIONS IN RESPECT OF PECUNIARY INTERESTS

There were none.

### C06/17/18 MINUTES OF PREVIOUS MEETING

**It was AGREED:** That the minutes of the meeting held on 10th April, 2017 be signed by the Chairman as a correct record.

### C07/17/18 APPOINTMENTS TO LEAD ROLES AND OUTSIDE BODIES

There was a discussion about the different roles performed by Parish Councillors nominated to outside bodies and it was noted that this was dependent upon the constitutional arrangements of such bodies.

### It was AGREED:

a. That the following appointments be made for the ensuing year:

Area of Responsibility	Role	Councillor
Burials & Cemetery	Portfolio	A Hubbard
Footpaths	Portfolio	D Dempsey
Planning Matters	Portfolio	A Guttridge
Roads and Traffic	Portfolio	P Bullen
Street Lights	Portfolio	A Guttridge
Wattisham Airfield Liaison	Portfolio	P Bullen
Parochial Church Council	Contact	R Lester
TON Class Liaison Officer	Contact	Clerk
King's Pightle Mgt Committee	Nominee	R Lester
Sportsfield Mgt Committee	Nominee	D Dempsey



Chamberlin Hall Mgt Committee & Playground	Nominee/ Representative	P Hutchings
--	----------------------------	-------------

\* To be clarified whether this is a nomination to the Management Committee or an appointment as the Parish Council's representative

- b. That the Clerk prepares and circulates guidance on the respective responsibilities of:
- i Parish Council “representatives” serving on outside bodies; and
  - ii Parish Council “nominees” to outside bodies, where the Parish Councillor is responsible for the management and control of the resources of the relevant outside body.

#### **C08/17/18 CALENDAR OF MEETINGS**

##### **It was AGREED:**

- a. That the calendar of meetings for 2017/18 be approved including a meeting at the end of July, rather than in August, and all other meetings being held on the second Monday of the month and commencing at 7.30pm; and
- b. That the Clerk takes steps to publicise forthcoming meetings in “The Bugle” at appropriate intervals during the course of the year.

#### **C09/17/18 DISTRICT COUNCILLOR'S REPORT**

District Councillor M Creffield reported on the following matters:

- a. The Top 10 Achievements of Babergh and Mid Suffolk District Councils in 2016/17;
- b. Notification received of the re-scheduling of the forthcoming Parish Liaison meeting because of the upcoming General Election; and
- c. A software upgrade which would interrupt public access to the Planning part of the Babergh District Council website from 12th May to 1st June, 2017 inclusive.

#### **C10/17/18 COUNTY COUNCIL ELECTIONS RESULTS – COSFORD ELECTORAL DIVISION**

**It was NOTED:** That local resident, Mr Robert Lindsay, representing the Green Party, had been elected to serve Bildeston (within the Cosford Electoral Division) at the recent Suffolk County Council elections.

#### **C11/17/18 CHAMBERLIN HALL**

Further to Minute C189/16/17, the Chairman referred to discussions held with Mrs F Lemon of the Chamberlin Hall Management Committee about ways of promoting Chamberlin Hall more effectively via the internet. The proposals included:

- Retention of Chamberlin Hall within the bildeston.org village web site;
- Addition of modern navigation and imagery starting with a Chamberlin Hall and Leisure section; and
- Addition of a calendar module that could be used by different organisations and provide a full timetable of village activities and events which could be viewed by local people.

The above could be provided through customisable off the shelf templates and modules which offered good value for money and a one-time purchase, or short subscription that only had to be renewed when changes or updates were required.

**It was AGREED:** That a sum of £250 be allocated from the Parish Council's General Fund towards improving the promotion of Chamberlin Hall including the provision of an on-line calendar facility. Councillor Guttridge reported that he had been pursuing an initiative that would bring Suffolk Libraries Local to Chamberlin Hall for four weekly sessions of between 3 and 4 hours during the August school holidays. The initiative would provide a mini-library to the village but also could include a range of other activities for children including a lego club, computer coding, craft work etc., and activities for older people including social groups, games and internet sessions for beginners. The Parish Council supported the proposal and it was noted that Councillor Guttridge would develop the proposals further before handing over to Councillor Hutchings.

**It was AGREED:** In principle, that the Parish Council meets the hire costs of Chamberlin Hall for the four sessions of Suffolk Libraries Local on terms determined by Councillor Hutchings in consultation with the Chairman and Clerk.



## **C12/17/18 CEMETERY (Minutes C174/16/17 and C191/16/17 refer)**

There had been a constructive meeting between representatives of the Parish Council and a local family in respect of the Parish Council's proposals to implement the provisions of the Cemetery Regulations regarding the maintenance and upkeep of the Grove Cemetery. Those that had attended the meeting agreed that it had been very useful to receive an insight into the thoughts of the family which could be used to help shape the Parish Council's future approach.

Councillor Hubbard reported that excess spoil at the cemetery had been removed by Harry Smith Aggregates Ltd. Consideration was given by Members of the Parish Council to preparing part of the unconsecrated ground for burial plots.

### **It was AGREED:**

- a. That Councillor Hubbard marks out an area for burial plots in unconsecrated ground to the rear of the cemetery and level with the first line of existing graves; and
- b. That the Grounds Maintenance Operative be requested to start preparing the area designated as unconsecrated ground.

## **C13/17/18 VILLAGE AMENITIES AND OPEN SPACES**

Councillor Hubbard reported that the Allotments Association was working well and the uptake of allotment plots was stronger than it had been for a number of years.

Councillor Lester reported that the Kings Pightle Trustees were making good progress and had adopted an Annual Management Plan, were preparing new Financial Regulations and considering how the Trust's part of the Henry Morphew's bequest would be utilised. A request was made for the grass to be left longer at Kings Pightle, particularly along the pathways. Councillor Guttridge undertook to liaise with the Grounds Maintenance Operative about this request so that the cutting height was adjusted. Councillor Hubbard reported that the bridge had been repaired.

Councillor Lester reported upon the continuing challenges that were being faced by the Sportsfield Management Committee with expenditure being greater than income. There had been unexpected costs arising from a burst water pipe on Sportsfield land and financial support was sought from the Parish Council towards the costs of repairing it. From the large water bill received, it was evident that it had been leaking for some considerable time. Currently, there was only one football team using the Sportsfield and this meant that rent received did not cover the costs of mowing the whole of the Sportsfield. Overall, there was an operating deficit of approximately £1,000 per annum.

Councillor Guttridge suggested that the Sportsfield provided valuable amenity space for the whole of the community not solely those involved in sporting activities. As such, a case could be made for the Parish Council paying the annual grass cutting charges to maintain the space for community use. This view was supported by other Parish Councillors. It was recognised that there would be some funds released from the Henry Morphew bequest to the Sportsfield and the intention was that they should be used for capital works (including repairs and maintenance of facilities on site), rather than being used to support operating costs as this would not be sustainable approach in the medium term.

### **It was AGREED:**

- a. That a grant of £500 be awarded to the Sportsfield Management Committee towards the costs of repairing the water leak on site; and
- b. That commencing with the grass cutting bill from Vertas for the last quarter, the Parish Council meets the costs of mowing the Sportsfield for a period of one year.

Councillor Guttridge reported that he and the Chairman, had identified repairs to the woodwork and painting which were required at the base of the Clock Tower.

**It was AGREED:** That Councillor Guttridge liaise with the Grounds Maintenance Operative and arranges for the painting and repairs to be undertaken to the Clock Tower.

## **C14/17/18 CLERK'S REPORT**

The Clerk reported upon correspondence received from Keep Bildeston Beautiful and an Open Spaces Survey received from consultants appointed by Babergh District Council. The Clerk reported upon the preparation of the Annual Accounts which would be submitted to the Internal Auditor on

Monday, 17th May, 2017 and presented to the next meeting for approval.

**It was AGREED:** That the Clerk completes and returns the Open Spaces survey in consultation with the Chairman and Vice-Chairman.

#### **C15/17/18 RESPONSIBLE FINANCIAL OFFICER'S UPDATE AND AUTHORISATION OF PAYMENTS**

**It was AGREED:**

a. That the following payments be authorised/ratified:

<b>Payee</b>	<b>Description</b>	<b>Budget Category</b>	<b>Amount (incl. VAT)</b>
David Blackburn	Clerk's Pay	Salaries & Expenses	£176.48
David Blackburn	Expenses	Salaries & Expenses	£18.00
Adrian Chinery	Grounds Maintenance	Salaries & Expenses	£219.00
Adrian Chinery	Expenses	Salaries & Expenses	£80.00
SALC	Annual Subscription 17/18	Subscription	£389.98
Babergh District Council	Bin Emptying	Playgrounds & Open Spaces	£150.00
Buildbase	Grounds Maintenance	Playgrounds & Open Spaces	£15.66
Came & Co	Motor Insurance	Insurance	£300.30
AON	General Insurance	Insurance	£745.73
Herts Fullstop	Black Sacks	Playgrounds & Open Spaces	£11.40
Gotelee Solicitors	Judicial Review	Administrative & Legal	£924.00
Sportsfield Management Committee	Grant	Community Grants	£500.00

(Note: All the above are payable from the General Fund. The grant had been agreed in principle between meetings and was submitted to the meeting for ratification by the Parish Council).

b. That the insurance be renewed and, in accordance with established practice, the Parish Council self-insures in respect of items of low value or rapid depreciation (eg the hedge trimmer, bins and computer added to the Asset Register in 2016/17; and

c. That the following receipts be noted:

<b>Payee</b>	<b>Description</b>	<b>Budget Category</b>	<b>Amount (incl.VAT)</b>
Babergh District Council	First Instalment	Precept	£10,547.50
B Seagar	Plot Reservation	Burials	£100.00

#### **C16/17/18 PLANNING APPLICATIONS**

##### **Planning Appendix A: Planning Applications Consultation**

Reference	B/17/00065
Address	Woolcombers, Duke Street, Bildeston, IPSWICH, IP7 7EW
Proposal	Application for Listed Building Consent - Erection of first-floor rear extension
Decision	Granted

## Planning Appendix B: Planning Applications Decisions

Reference	B/17/00064
Address	Woolcombers, Duke Street, Bildeston, IPSWICH, IP7 7EW
Proposal	Erection of first-floor rear extension
Decision	Granted

Reference	B/17/00065
Address	Woolcombers, Duke Street, Bildeston, IPSWICH, IP7 7EW
Proposal	Application for Listed Building Consent - Erection of first-floor rear extension
Decision	Granted

Reference	B/17/00246
Address	Bentons, Wattisham Road, Bildeston, IPSWICH, IP7 7JR
Proposal	Internal alterations and erection of extension
Decision	Granted

### **C17/17/18 PUBLIC SESSION**

There were no issues.

### **C18/17/18 MATTERS TO BE BROUGHT TO THE ATTENTION OF THE COUNCIL**

Councillor Dempsey referred to dog fouling and the national microchipping initiative in respect of dogs. He undertook to liaise with Babergh District Council.

Councillor Hubbard said that he would contact Mr James Buckle over arrangements for the Annual Farm Tour so that information could be supplied to "The Bugle" in time for the copy deadline.

Councillor Hubbard referred to the lifebuoy ring on the first floor of Chamberlin Hall from HMS Bildeston and Members of the Parish Council considered how this, along with the historic artefacts and records from the Henry Morphew collection, might be best made available for public display. It was suggested that this could be discussed with the new Chamberlin Hall Management Committee after its Annual General Meeting.

Councillors referred to various encroachments on to common land in the village. The Clerk was asked to notify, in writing, the Suffolk County Council's Commons Registration service having been supplied with precise details of the encroachments by Parish Councillors.

Further to Minute C197/16/17, the Clerk undertook to pursue with Suffolk County Council road markings that had appeared outside nos 3, 5 and 7 Smock Meadow.

### **C19/17/18 CONFIDENTIAL BUSINESS**

**It was AGREED:** That the public be excluded from the remainder of the meeting in accordance with the Public Bodies (Admissions to Meetings) Act 1960.

#### **a. HENRY MORPHEW'S BEQUEST**

There was no further information to report.

#### **b. JUDICIAL REVIEW (B/15/01433/OUT/GP)**

Councillor Guttridge provided a comprehensive update on the Parish Council's application for judicial review and steps being taken by the Parish Council's legal advisers to secure a concession from Babergh District Council.

#### **It was AGREED:**

a. That Councillor Guttridge be re-confirmed as the Parish Council's representative in handling

all matters relating to the Judicial Review (following his previous appointment through his role as Chairman in 2016/17 – Minute C19/16/17 refers), liaising with the Clerk, as appropriate, in respect of any matter that may have resource implications for the Parish Council;

b. That the Clerk responds to Keep Bildeston Beautiful confirming the Parish Council's agreement to the points made in their letter dated 4th May, 2017; and

c. That following conclusion of the current round of discussions with other parties, Councillor Guttridge will provide a written report in "The Bugle" explaining to local residents the steps that have been taken by the Parish Council and the outcome in challenging the two planning applications approved by Babergh District Council.

The meeting closed at 9.58pm.

## TRACTOR TRAILER RIDE

An informative 'Tractor Trailer' ride has been arranged by Mr Buckle, through the Parish Council, taking in various parts of his land on **Thursday 6th July**. The trailer is open sided with straw bales to sit on and has a capacity of up to 28 persons. Of course everyone rides completely at their own risk. If you are interested in coming along please contact **Ashley Hubbard 01449 740633** (accompanied children over the age of 10 will be permitted).

## **BILDESTON PRODUCE SHOW Saturday 9th September 2017 AT ST MARY MAGDALENE CHURCH**



**Schedules available at Bank  
House Stores for you to  
collect and to plan your  
entries to win GOLD at this  
year's show.**

*I would like to say thank you to my family and friends for the cards and presents given to me on my 90th birthday. Jean Chinery*

# Bildeston Parish Council

## Calendar of Forthcoming Meetings 2017/18

Date	Meetings (other than ordinary meetings)
Tuesday, 9 <sup>th</sup> May, 2017	Annual Parish Council Meeting
Monday, 12 <sup>th</sup> June, 2017	Parish Council
Monday, 10 <sup>th</sup> July, 2017	Parish Council
Monday, 31 <sup>st</sup> July, 2017	Parish Council <small>(provisional date will only be held if urgent business needs to be transacted)</small>
Monday, 11 <sup>th</sup> September, 2017	Parish Council
Monday, 9 <sup>th</sup> October, 2017	Parish Council
Monday, 13 <sup>th</sup> November, 2017	Parish Council
Monday, 11 <sup>th</sup> December, 2017	Parish Council
Monday, 8 <sup>th</sup> January, 2018	Parish Council
Monday, 12 <sup>th</sup> February, 2018	Parish Council
Monday, 12 <sup>th</sup> March, 2018	Parish Council
Monday, 9 <sup>th</sup> April, 2018	Parish Council
Monday, 23 <sup>th</sup> April, 2018	Annual Parish Meeting of Electors

**Notes:**

1. All meetings are held at Chamberlin Hall and commence at 7.30pm.
2. Members of the public are welcome to attend and may speak at a meeting on any matter that affects the village.
3. The Annual Parish Meeting is a meeting for all the electors of the village and is not a Parish Council meeting.

David Blackburn      Clerk to the Parish Council

*The VIPs would like to thank everyone who came to our second production JUST FOR LAUGHS. We had so much fun and from the raucous laughter.... so did you!!*

*Thank you too for the raffle prizes that were so kindly donated and to Dionne Sibley for being our professional photographer!*

*We made just over £400 for our group and gave £200 to the Hitcham Village Hall roof fund. Date for your diary...*

***SKOOL DETENTION NIGHT Saturday 21st October***



## J M GARDENING SERVICES

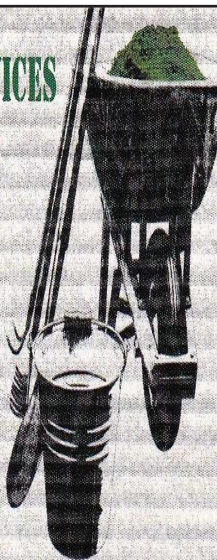
FOR ALL GARDEN  
MAINTENANCE

NO JOB TOO SMALL

JOHN MORGAN

TEL: 07855 855994

johnmorgan007@btinternet.com



## Brook Farm Studio

Bildeston's studio for painting, pottery,  
figurative drawing, felt making, crafts  
and creative embroidery

Website: [www.brookfarmstudio.co.uk](http://www.brookfarmstudio.co.uk)

email: [brookfarmstudio@gmail.com](mailto:brookfarmstudio@gmail.com)

Call Hazel 07432 138966/01473 823819

# GIDNEY

## PLUMBING & HEATING

Tap Changes, Ball Valves, Shower Pumps,  
Water Softeners, Hot Water Cylinders,  
Bathroom, Wet room & Kitchen Installs,  
Radiator & Valve Replacements,  
Underfloor Heating, Heating System Repairs,  
Renovation & New Builds.

24 Hour Emergency Cover  
Professional & Reliable Service

07534525263  
01449 258254

[gidneyph@outlook.com](mailto:gidneyph@outlook.com)  
[www.plumbinginsuffolk.com](http://www.plumbinginsuffolk.com)

Friendly Experienced  
Teacher offers  
Individual

## MATHS Tuition

Speciality  
Confidence Building  
KS1 – KS3

Call Colin Plummer on  
01449 736918  
for details and availability  
or email:  
[colinp52@btinternet.com](mailto:colinp52@btinternet.com)

## Angel Delights

**Outside Caterer &  
Specialised Confectioner**

*Weddings – Christenings – Funerals  
Birthday Parties – Barbecues – Dinner Parties*

Tradional tea room now open  
at 85 high Street Hadleigh

**CAKES FOR ALL OCCASIONS**

Contact Helen  
01473 828191  
[info@angel-delights.com](mailto:info@angel-delights.com)  
[www.angel-delights.com](http://www.angel-delights.com)

## Stuart Walker

**Decorating, Painting & Refurbishments**



A locally based company offering an honest and reliable service

**Painting - Decorating - Refurbishments - Repairs**

All work considered indoors & out! Fully Insured & free quotations provided

Please contact Stuart on Tel: 07711 606464 or 01449 740387

Email: [stuma1@hotmail.co.uk](mailto:stuma1@hotmail.co.uk)



## **\*\*Pilates and Yoga classes now at Kersey Mill\*\***

If you want to exercise both your body and mind as well as improving your sense of well-being, strength, flexibility and mobility then Pilates is for you! We are passionate about bringing the benefits of Pilates/Yoga to everyone and with a highly qualified team of instructors we can certainly help you improve muscle tone and core stability, building strength from the inside out, re-balancing the body and bringing it into correct alignment.

### **BEGINNERS CLASSES AND FREE TASTER SESSIONS\* ARE NOW AVAILABLE AS WELL AS PRIVATE 1:1's**

*\* on selected classes*

We now offer small Yoga classes too to add to your well-being experience at Kersey Mill. Please get in touch if you would like any more information.

Whether you are new to Pilates/Yoga or have been enjoying the benefits for years, we feel confident that we can accommodate your needs to achieve results.



Body Control Pilates is a registered  
trademark used under licence

Pilates Works, The Studio, Kersey Mill, Kersey,  
[www.pilatesworks4u.com](http://www.pilatesworks4u.com) | [pilatesworks4u@gmail.com](mailto:pilatesworks4u@gmail.com)

Tel: 01473 823 500 or 07855 394703



# THE FLOWER SHOP

at Kersey Mill



*Local & Nationwide Deliveries*

**Call 01473 805156**

The Flower Shop, Kersey Mill, Ipswich, Suffolk IP7 6DP

[www.theflowershopkm.com](http://www.theflowershopkm.com)

Email: [sales@theflowershopkm.com](mailto:sales@theflowershopkm.com)



**Andrew Bingham**

INDEPENDENT FUNERAL SERVICE

**Caring, family run  
funeral service**

*Small enough to care,  
Large enough to cope.*

**[www.andrewbingham.co.uk](http://www.andrewbingham.co.uk)**

*Award winning 24 hour personal service - qualified & experienced*



Bereaved Young

**Golden Charter**  
Funeral Plans



Friends in Bereavement  
Support Group

**01449 771666**

The Nutshell, Milton Road South,  
Stowmarket, Suffolk IP14 1EZ



D'ENZA



HAIR & BEAUTY SALON

At "KERSEY MILL"

## "June Offers"

**1: Father's Day 18<sup>th</sup> June Special Offer** ~ Buy a Hot Stone Back, Neck & Shoulder Massage on a gift voucher ~ valid for 6 months. (This price is only through this month unless brought as a gift voucher.)

**Special Price of only £25**

**2: Beauty ~ Book a OPI Luxury Manicure & Pedicure**

**Special Price of only £40**

**3: Reflexology available Monday's & Tuesday's or evenings- Free consultation**

**Special Price of only - 30mins £35 - 45mins £45**

**4: Sports Massage available Monday's & Tuesday's or evenings- Free posture analysis**

**Special Price of only - 30mins £35 - 45mins £45**

**\*Other additional treatments include Threading, Russian eyelash extensions & Gel nail extensions**

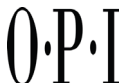
**Amy, Hayley & Sarah are taking bookings for hair - Please call 07547488587.**

The above offers cannot be used with another offer.

Please telephone for more information or make a booking on: **01473 829069**

Email: [emmaspraggons@yahoo.co.uk](mailto:emmaspraggons@yahoo.co.uk) or visit us on Facebook or Twitter for our special offers.

For opening times & brochure please look at our website: [www.denzahairandbeauty.com](http://www.denzahairandbeauty.com)



Unit 1 Church view -Kersey Mill-Kersey- Ipswich-Suffolk- IP7 6DP



## *A letter from Manor Road....*



By the time this magazine comes to you, the builders will have started up at the farm next to the church. They are sorting out the footpath along the west side of the church first and helping us move the falling-down wall and tidy up the boundary for which we are very grateful. It will be good to have neighbours up there and see the old farm buildings re-made into something beautiful and useful again. There is even a plan to re-use the silos I think - not as you see them now though!

We will have a new churchwarden from 5th June as Teresa Lester finishes. Teresa has volunteered and been accepted for training as a Reader for the Church of England. Readers are licensed at the end of two or three years training to take some of the services and to preach. We have been very grateful to have Teresa as churchwarden and glad of her dedication and generosity. She has been a great support to me and we wish her God's Blessing as she changes tack in her church life.

Our new warden will be Tina Leamon and although she and her family will be moving out of the village soon, Tina will not be very far away and has already begun here warden duties. We enjoyed a lovely coffee morning at her home in May.

The church council will be looking at changes inside the church as well as keeping an eye on the new homes next door. We would like to re-hang the charity board when it has been repaired though that will be no easy task as it is huge and heavy. We are also thinking of how best to use the space on the north side of the church and might make some small changes there. It would be good to have a new and bigger shed, or another smaller one as storage is always an issue just as it is at home. And it is dream at the moment, but maybe possible in the future, to have solar panels on the lower roof that can't be seen from the road, so that we will be able to heat the church without worrying about the cost of the electricity so much. All of this is thanks to your help with fundraising of course. We couldn't do much at all without it, so please do keep on supporting the church - come to the coffee morning and jazz night this month (ring me for tickets) - you would be most welcome.

*God Bless, Rev'd Liz*

**IN UNCERTAIN TIMES LIKE THESE...**

**TRY PRAYING**

20 MILLION ADULTS IN THE UK PRAY

13 MILLION PRAY AT LEAST ONCE A MONTH

9 MILLION PRAY EVERY DAY

1 IN 3 PEOPLE BELIEVE GOD WILL  
ANSWER THEIR PRAYER

FOR HELP OR FREE RESOURCES CONTACT BILDESTON BAPTIST CHURCH:  
@ BILDESTONBC@GMAIL.COM

**BILDESTON w WATTISHAM,  
WHATFIELD w SEMER, NEDGING & NAUGHTON**

**SERVICE SCHEDULE – June 2017**

<b>June 2017      NB – Services in bold are Benefice Services</b>			
June 4th Pentecost	11.00am	Family Service	Bildeston
<i>Wednesday 7th June</i>	<i>9.30am</i>	<i>Morning Prayer</i>	<i>Whatfield</i>
June 11th Trinity	9.30am	Holy Communion	Bildeston
June 18th Trinity 1	11.00am	Morning Prayer	Bildeston
<i>Wednesday 21st June</i>	<i>9.30am</i>	<i>Morning Prayer</i>	<i>Whatfield</i>
<b>June 25th St Peter</b>	<b>11.00a m</b>	<b>Benefice Holy Communion &amp; Patronal Festival</b>	<b>Lindsey</b>

## Baptist Church, Duke Street, Bildeston

Jim Haley tel: 01449 740716 email: bildestonbc@gmail.com

**Service every Sunday morning at 10:45**

**Lunch Club: at 12:30 on the first Wednesday of each month –**

All are most welcome

**Community Coffee Centre: Every Friday from 09:15 to 11:30am**

Enjoy meeting old and new friends at these events!

**‘Craft it Together’ - First Monday of each month at 7:00pm.**

Bring along your craft activities and join us for an informal, relaxed evening  
share ideas, gain new skills or just enjoy doing your own thing

Drinks provided.

**01449 740716 or 01449 741606 for more information**

**‘Men’s Breakfast’ - last Saturday of each month at 8am**



## **Bildeston Community Coffee Centre**

Baptist Church 9:15-11:30 ..... **Every Friday**

## **Lunch club**

Baptist Church 12.15 for 12.30pm start ..... **1st Wed every month**

## **Craft it Together**

01449 740716/741606 for details ..... **1st Monday every month**

## **Strollers & Striders**

Baptist Church Car Park 10.00 ..... **Every Monday**

## **Baby & Toddler Group**

Baptist Church 9.15 to 11.30 ..... **Every Tuesday**

## **Bildeston Upbeat Contemporary Choir**

Bildeston Primary School 7.00 to 9.00pm ..... **Every Monday in term time**

## **Mens Breakfast**

Baptist Church 8.00am ..... **Last Saturday every month**

## **Family Carers Group**

Bildeston Health Centre 1.30-3.30pm ..... **Last Tuesday every month**

## **Tuesday Evening Bike Ride**

6.45pm Market Square ..... **Every Tues evening**

## **Carpet Bowls Open Evenings**

Chamberlin Hall 7.15pm ..... **6th & 13th**

## **Fundraising for St Mary's Church**

Cup cakes Xmas Hall 7.30pm/coffee morning The Lodge ..... **8th & 14th**

## **Ladies Club**

7.30pm Chamberlin Hall ..... **Thurs 8th**

## **Parish Council Meeting**

Chamberlin Hall 7.30pm ..... **Mon 12th**

## **BNatural Garage Sale**

around the village 9.00-1.00pm ..... **Sat 17th**

## **Jazz at the Church**

St Mary's Church 7.30pm ..... **Sat 17th**



When you're finished with this Bugle please pass it on or recycle it.