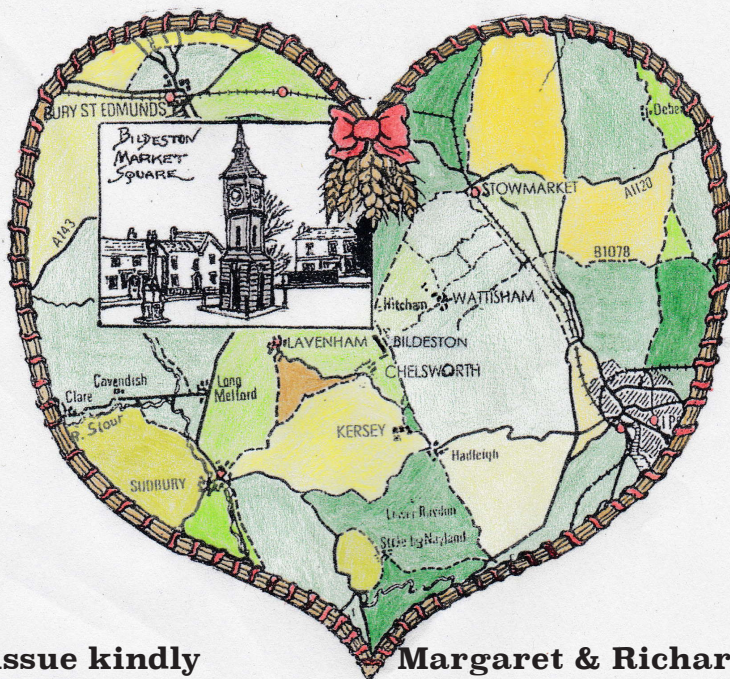


Issue number 318
April 2017



**This issue kindly
sponsored by -**

**Margaret & Richard Emsden
celebrating their
Golden Wedding
anniversary.
50 years of marriage.**



Saint Mary's Church, Bildeston, Suffolk.

The village magazine produced for the people of Bildeston



BILDESTON BUGLE ADVERTISING AND FREE CONTRIBUTION INFORMATION

Our aim is to provide every resident in Bildeston with a magazine which provides information of local interest FREE OF CHARGE. To that end we are required to be efficient in the space we use to print free notices. We endeavour to include interesting items, announcements for events open to the general public for free and items of a charitable nature free of charge. Ongoing free announcements need to be reduced to minimum size or make a contribution towards printing costs. Please check with us before submitting your advert and ALWAYS provide us with all of your contact details in order for us to send a receipt.

email: editor@bildestonbugle.co.uk

Sponsor a 'Bugle' – £15 per issue

includes a brief message of your choice on the cover of the magazine

Advertising Rates

	1 issue	12 issues (30% disc)	
1/4 page	£3.00	£26.00	65mm W x 92mm H
1/2 page	£6.00	£50.00	134mm W x 92mm H
Full page	£12.00	£100.00	134mm W x 190mm H

THE SMALL PRINT

All adverts, payments and items are required before the 17th of the month for inclusion in the following month's issue (except December).

The earlier free contributions are received the greater the chance of inclusion.

Please make cheques payable to Bildeston Bugle and send to:

The Editor, Bildeston Bugle, 14 Squirrells Mill Rd, Bildeston IP7 7DY

Receipts cannot be issued without your full postal address.

If we do not receive payment by the 17th of the month your advertisement may NOT be included

The Bildeston Bugle Management Team is:

Alan Jacobs (Editor) 01449 741645

Christine Hubbard (Treasurer) 6 Manor Road 01449 740633

Tricia Baldwin (Advertising Revenue)

Angie Biddulph (Bugle Team Liaison)

Stuart Law (Assistant Editor)

Alison Sims (Marketing)

ED'S COMMENT

You would think that the beginning of the tax year would coincide with the calendar year – and in some countries it does. In the UK, however, the tax year starts on April 6. The reason for this goes way back to medieval times. In England and Ireland, the New Year used to start on March 25, also known as “Lady Day” in commemoration of the angel Gabriel’s announcement to the Virgin Mary that she would become the mother of Jesus Christ. Lady Day was one of the four most important days in the religious calendar. All accounts, including debts and rents, had to be settled by these so-called “quarter days”, and Lady Day was the first, gradually becoming regarded as the start of the financial year (although the precise reason for this is unknown).

The move forward to April 6 was because of changes to the calendar and the actual number of days in various years. Until 1582, Europe had used the calendar established by Julius Caesar. Under the Julian calendar, the year had 11 months of 30 or 31 days, with one month, February, consisting usually of 28 days but with 29 every fourth “leap” year. This had worked well for centuries, but because it did not align exactly with the solar calendar problems developed. The Julian year was only 11½ minutes longer than a solar year, but by the late 1500s, this had all added up and the Julian calendar was some ten days adrift from the solar calendar. The Roman Catholic church was especially concerned because the celebration of Easter had been gradually getting later than when it had been celebrated by the early church.

So in 1582 Pope Gregory XIII instituted a change (the “Gregorian” calendar) to solve the problem. While Europe adopted the Gregorian calendar, England, with its history of conflict with the Roman Catholic church, did not and continued with the Julian calendar. By 1752, when it was 11 days out of alignment with the rest of Europe, England finally accepted that it would have to make a change. The decision was made to drop 11 days from the month of September to catch up, and so September 2nd was followed by September 14th that year. To ensure that there was no loss of tax revenues, however, the Treasury extended the 1752 tax year by adding on the 11 days at the end. Consequently, the beginning of the 1753 tax year was moved to April 5. In other words, the most important thing was that the government should not lose any money! In 1800 a further adjustment was made, shifting the start of the tax year forward by one more day to April 6. The year 1800 would have been a leap year under the Julian calendar system, but not the Gregorian one, so the Treasury treated 1800 as a leap year, once again, to get an extra day’s revenue! April 6 has remained the beginning of the tax year ever since. So now you know!

The meeting about Chamberlin Hall took place on 27th March. The Bugle’s deadline is the 17th of every month. Therefore it was not possible to get a report in this April issue of the meeting. It will be in the May issue instead.



HONEY BEE'S NURSERY

Hitcham Village Hall, Hitcham, IP77NE

FOR CHILDREN AGED 2 – 5 YEARS

Mon, Wed, Fri 9.15a.m. – 12.15p.m, 1.15p.m. or 3.15p.m.

Tues, Thurs 9.15a.m. – 12.15p.m. or 1.15p.m.

Fee's based on £8.00 for 3hr session

2 indoor Rooms and Outdoors Areas

Ofsted Registered

Early Years Funding for all 3 & 4 year olds + some 2 years olds



**WANT TO LEARN TO PLAY
GUITAR. BASS. DRUMS?**



***MANY CONTEMPORARY STYLES COVERED, INCLUDING
ROCK, METAL, POP, INDIE, BLUES, FUNK AND MORE.***

KEYBOARDS, VOCALS, SONG AND LYRIC COMPOSITION

MOBILE DIGITAL RECORDING SERVICES ALSO AVAILABLE.

ADAM KEETON

GOOD COMPETITIVE RATES

01449 744530 OR 07914 798374

FULL CRB + PROJECT LEADER WITH AMPLITUDE



Bildeston Primary School

Making Pancakes on Shrove Tuesday

We all made pancakes on Shrove Tuesday and had great fun measuring our ingredients and then eating them – delicious!!

KS2 Science Day



On Thursday 23rd February we held a Science morning for Key Stage 2 pupils and their families. Pupils and parents took part in a variety of different experiments across the classes.



Tree Planting at Chelsworth

On 30th January Miss Myers took along a group of our pupils to join in with the River Stour 500 Trees Project where they helped to plant trees along the river at Chelsworth.



Quick Sticks Event



Our team took part in the Quick Sticks Festival at St Joseph's College on Monday 6th March 2017. The team played really well and achieved joint 3rd position overall.

Small Schools Tag Rugby

This event was held on 9th February at Whatfield Primary. Bildeston sent a selection of Key Stage 2 pupils to represent our school and they did themselves and the school proud. Bildeston were overall winners of this event.



On 9th March four pupils from Year 3 represented the school in a cross country competition held at Hadleigh High School. Pupils from across the pyramid schools took part and we are proud to report that our pupils finished in 10th, 16th, 19 and 20th positions.

Bildeston Primary School
Newberry Road, Bildeston, Ipswich, Suffolk, IP7 7EU
Telephone: 01449 740269
Website: www.bildeston.suffolk.sch.uk



VILLAGE INDEPENDENT PLAYERS

PRESENTS

JUST FOR LAUGHS

A ONE ACT PLAY

'THE FAT LADY SINGS'

SKETCHES, AUDIENCE PARTICIPATION AND

COMEDIC ENTERTAINMENT FROM

MR PAUL CAGE

Friday 12th and Saturday 13th May

at Hitcham Village Hall

Doors open at 7pm curtain up 7.30pm

Licensed bar and raffle

Tickets £8 Contact Debbie 01449740375

The VIP's will be making a donation to the Hitcham village hall roof fund

**Friendly Experienced
Teacher offers
Individual**

MATHS Tuition

**Speciality
Confidence Building**

KS1 – KS3

**Call Colin Plummer on
01449 736918
for details and availability
or email:
colinp52@btinternet.com**

Angel Delights

**Outside Caterer &
Specialised Confectioner**

*Weddings – Christenings – Funerals
Birthday Parties - Barbecues - Dinner Parties*

**Traditional tea room now open
at 85 high Street Hadleigh**

CAKES FOR ALL OCCASIONS

Contact Helen
01473 828191
info@angel-delights.com
www.angel-delights.com



KINGS HEAD & Brewery

Nigel, Susie, Ryan and Freya look forward to welcoming you to the Bildeston Kings Head.

www.bildestonkingshead.co.uk

- Here's our **free live music for April**: every **Wednesday** is **Open Mic Night** from **8:30pm**; from **9pm** on **Saturday 29th** highly recommended **Peter Hepworth** will be entertaining us with a mix of jazz/Americana/pop/rock; and from **1pm** on **Sunday 30th** have a relaxing lunch accompanied by **Kevin Nightingale** on contemporary classical acoustic guitar.
- Thursday is bar games night, there's all the usual plus **Poker, Skittles** and **table top table football, snooker & tennis**. Our monthly **charity quiz night** is on **Thursday 27th April** at 8:30pm, please arrive by 8pm. To book a table telephone Sue/Nigel on 01449 741 434. A big thanks to February's teams who raised **£90** for **East Anglia Children's Hospice**.
- Our good value homemade food uses quality ingredients that are locally sourced where possible. We are well known for tasty beer-battered fish & chips, delicious boozy beef pie (Suffolk red poll beef) and our freshly prepared traditional Sunday roasts. Meals are cooked to order, available to eat-in or take-away and in child sized portions. To reserve a table please phone **Sue or Nigel on 01449 741434**.
- We brew our own real ales on-site (tours by arrangement) with at least one other from a local independent brewer.
- Our opening times are as follows:

Wednesday	Open 6pm-12am (open mic/buskin night)
Thursday	Open 6pm-11pm (bar games night)
Friday	Open 4pm-12am (full menu 5-9pm, T/Away 5pm)
Saturday	Open 12pm-12am (full menu 12-2pm & 6-9pm)
Sunday	Open 12pm-10:30pm (roast/Sunday menu 12-3pm)



Karen Finch RHAD FSHAA FRSA

Free hearing tests in Mid Suffolk

Take the first step towards better hearing & join the award winning
Hearing Care Centre for our special Open Day events!

Thurs 20th & Fri 21st April - Stowmarket

9am-5pm (by appointment only) | StowHealth, Violet Hill Road

Sat 22nd April - Needham Market

9am-1pm (by appointment only) | The Country Practice, Barking Road

■ **FREE** hearing tests & professional advice (saving you £20) ■ **FREE** refreshments

We guarantee an impartial, expert and caring approach to all hearing concerns. Whether you are concerned about your hearing, seeking advice on your current hearing aid or wish to know more about the latest digital hearing aids our hearing aid audiologists will be happy to help.

**To book your FREE hearing test please call
01473 230330 or 0800 096 2637**

■ Award Winning ■ Family Run ■ Private ■ Independent ■ Local

hearingcarecentre.co.uk

COUNTRYSIDE OBSERVER



As we move into Spring and the so called “Hard Winter” many suggested has failed to appear, I thought we should look back 50 years to the big freeze of 1962 and 63 which held the nation in its grip for nearly three months. With an average temperature of -2.1°C (28.2°F), January 1963 remains the coldest month since January 1814 over Central England. The sea froze for a mile out from shore at Herne Bay, Kent. The upper reaches of the River Thames also froze over, though it did not freeze in Central London. The ice was thick enough in some places that people were skating on it, and on 22 January a car was

driven across the frozen Thames at Oxford. In Christchurch Park, Ipswich, people ice skated on the frozen pond while the hills around were turned into ski slopes. Everyday living became a struggle as food prices soared by thirty per cent, public transport was crippled and households had to rely on water from road tankers because the mains were frozen. Homes across Suffolk, which had no central heating had ice on the insides of their windows and rubbish built up in the streets as collections became impossible. Power cuts became commonplace and the ground was so solid that grave diggers could not even bury the dead. During the three-month freeze, the country was battered by gale force winds while fresh snowfall quickly froze solid. In February 1963 more snow came with winds reaching Force 8 on the Beaufort scale. A 36-hour blizzard caused heavy drifting snow reaching 20 foot in some areas. Livestock was trapped in fields, farmers desperately trying to keep them fed and watered. March 1963, The thaw finally set in and on 6th March it was the first morning of the year without any frost anywhere in Britain. The temperatures soon soared to 17°C (62.6°F) and the snow rapidly disappeared. No winter since has come close for the length or severity. When my parents talked about bad winters they would talk about 1947, for me it was 1962 and 63. The thing that takes me back to that time is the smell of paraffin.

In early February I called in to see an old friend who lives in the village of Yorkley on the edge of the forest of Dean Gloucestershire. When I first visited back in 1979 the village had immaculate grass and verges. Boar became feral in the area after some escaped or were released from a farm near Ross on Wye in 1999. A sizeable population has now developed in the Forest with a number of family groups or sounders holding territories across the forest with several lone wandering boars. Current estimates are between 1500 to 2000 now roaming wild. Boars are a destructive animal, using their strong snouts to sniff out food. Consequently open grass areas around the forest now resemble battle fields with soil upturned and all grass destroyed. The boars are leaving the forest and interacting with people on a regular basis and some dogs have been injured or killed. Numbers of road casualty boar have increased. Without control, there is the potential for boar to have an adverse effect on flora (e.g. the bluebell carpets) and fauna (potentially European Protected Species such as dormice or the ground nesting birds such as wood warbler which are so important. Control of individual problem animals has been undertaken, and the forest population has become increasingly nocturnal and more shy of people although they are still regularly seen by forest users.

Mike Biddulph



Family Carers Group

Are you an unpaid family carer looking after a loved one or friend?

We meet once a month for an afternoon of chat, speakers, activities and a break from caring.

Last Tuesday of the Month

1.30pm– 3.30pm

Bildeston Health Centre, High Street, IP7 7 EX

Why not come and join us?

Please contact Louise Bissett on 01449 740254

Bildeston Family Carers Group is an Independent group partnered to Suffolk Family Carers



FRIENDS OF BILDESTON SURGERY (FOBS)

ARE HOLDING A COFFEE MORNING AT
CHAMBERLIN HALL, BILDESTON

ON **SATURDAY 22ND APRIL 2017 10 A.M. TO 12 NOON**

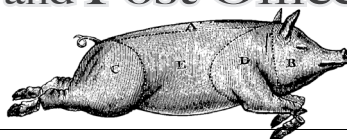
STALLS : CAKES, TOMBOLA, RAFFLE ETC.

ADMISSION 50P INCLUDING REFRESHMENTS

BANK HOUSE STORES

and Post Office

Richard & Joan
O'Sullivan



telephone
01449 740403

Shop locally - and help keep Bildeston beautiful!

We will be open every day over Easter, closing at midday on Good Friday, Easter Sunday and Bank Holiday Monday.

We have daily deliveries of milk and bread; eggs from Hart's of Baylham; bacon, ham and sausages from Broadland Hams and fresh bread from Sparling and Faiers of Lavenham. Getting in the car to do your shopping can cost you more than you think.

Check out our special offers, available up to 8th April:

Kenco Millicano Coffee	Half Price	Only £2.44
Persil Small & Mighty	1.4 litre	Only £6
Scott's Porage Oats/Quaker Oats		Only £1.50
Andrex Toilet Rolls	4-Pack	Only £1.75
Kellogg's Granola		Only £2
Pilgrim's Choice Mature Cheddar	350g	Only £2.29
Tetley Tea Bags	80-Pack	Only £1.65
Onken Biopot Yoghurt	450g	Only £1
Oreo Biscuits	154g	Only 70p
Stella Artois	10-Can Pack	Only £9
Secretary Bird South African Wines		Only £4.99
Treviso Prosecco		Only £7.50
Famous Grouse/Russian Standard Vodka		Only £13

.....plus many, many more.

We are open from 7am to 7pm (6.30 for the Post Office - 6 o'clock on Wednesdays) Monday to Saturday and 8.00 to 12.00 every Sunday and Bank Holidays.

Shop Locally - you need a jolly good reason not to!

Studio 66

Ladies and Gents Hairdressers



Restyling

Foils & Highlights

Perms & Colours

Shampoo & Sets

Cut & Blow Dries

Friendly Service from our Professional Team

Tue & Wed Senior Citizens

*****special rates*****

Opening Times Tues - Friday 9 - 5 pm Sat - 8 - 1pm



Tel 01449 740644

52A High St Bildeston IP7 7EA

Bildeston Ladies Club



At our last meeting, we were entertained by the sound of the Barking Handbell Ringers. I was mesmerised by the crystal clear notes and the intricacies of the tunes they

were performing. Did you know that the hand-bells were first made in order that church bell-ringers of long ago could practise their craft away from the church tower - and where was their chosen location? Yes, you guessed it - the local pub!

The Barking group consisted of 9 ringers with a set of 37 bells covering 3 full octaves. Each ringer was in charge of their own section of bells and some were able to play 2 in each hand. The oldest member was 78 and the youngest member was Clem, aged

just 8 (but as he emphasised, nearly 9!) and he entertained us with his cheeky smile. It just goes to show that there are hobbies out there for all ages to enjoy together. To round off the evening some of us had a go, but I'm not sure that the sound was as easy on the ear !!

On April 6th we will have a visit from

Katrina of the Colchester Owl Rescue, to tell us about their work. The hall is opened at 7:30 for our meetings to start at 8p.m. Please note that this will be our last chance to add to our cash pot collection in aid of EACH, as we will be presenting our cheque to them in May - bring along your spare coins (or notes!) to add to this.

Jo Silburn – bookings secretary - 740504

Ann Shirley – chairperson - 740114

Mary Ruffell – secretary – 740841



NAUGHTON MAY FAYRE



EAST SUFFOLK MORRIS MEN DIAMOND LITES MAJORETTES

**BANK HOLIDAY MONDAY
1st MAY 2017 12.30-3.30pm
NEDGING WITH NAUGHTON VILLAGE HALL**

- | | |
|-----------------------------|--------------------------|
| ⊗ Showman's Engine | ⊗ Barbecue |
| ⊗ Tombola | ⊗ Spinning Demonstration |
| ⊗ Cake Stall & Refreshments | ⊗ Bouncy Castle |
| ⊗ Plant Stall | ⊗ Children's Corner |
| ⊗ Fairground Organ | ⊗ White Elephant |
| ⊗ Vintage Engines | ⊗ Birds of Prey |
| ⊗ Classic Bikes and Cars | ⊗ Grand Draw and Raffle |
| ⊗ Coconut Shy | ⊗ & Much More! |
-

**A GREAT AFTERNOON OUT FOR ALL THE FAMILY!
SO PLEASE COME ALONG AND JOIN IN THE FUN!**

ALL PROCEEDS GO TO ST. MARYS CHURCH, NAUGHTON

COUSINS & SON BILDESTON LTD

available to carry out all your building requirements
from
Renovations / Alterations / Extensions
to
General Repairs

Please contact Paul for a free estimate

01473 658919 or 07876 244461

or email paul.cousins268@btinternet.com



Paul's Carpentry

**All Carpentry projects considered large
or small**

**Decking, Garden Rooms, Wardrobes,
Shelving, Children's play houses and
tree houses.**

Mobile: 0779 234 0365

Tel: 01449 616 888

email: paulhb100@gmail.com

www.carpentryservicesinsuffolk.co.uk

Annual Village Spring - Clean 2017.



Saturday April 1st
Meet at 10 a.m. on the Market Square
Bring your own gloves
(bags and litter-pickers provided)
Children welcome with adult supervision.

As usual you can pre-book a particular area of the village that you would like to work on or just join in where needed. We hope to cover all the pavements and pathways within the Parish boundary and the roadways towards all our neighbouring villages. As you will appreciate this is a lot of work, so the more volunteers the easier it is for us. Come along and do your bit!

Please phone us if you can, so we have an idea of numbers, or just turn up on the day.

Thanks,

Jo Silburn 740504

Robin Sidgwick 747404



SESAW FUNDRAISING EVENTS

Easter Fair, 11am 1st April, Village Hall, Rectory Road, Whatfield, IP6 7QU.
Egg-cellent choice of gifts and goodies.

Spring Fair, 10-3pm 23rd April, The Old School, Long Melford, CO10 9DX.
Huge selection for all the family and the pets. TABLES STILL AVAILABLE,
£10 each, phone 01206 263269 to book.

ADULT ENTRY 50p, RAFFLE, REFRESHMENTS, FREE PARKING AT
BOTH EVENTS All proceeds to Suffolk & Essex Small Animal Welfare, Reg.
Charity No.1124029. www.sesaw.co.uk

- ❖ Home Maintenance
- ❖ Carpentry
- ❖ General Building Work
- ❖ Brickwork & Blockwork
- ❖ Stonework
- ❖ Hand Built Sheds
- ❖ Floor & Wall Tiling
- ❖ Paving & Patios
- ❖ Kitchens & Wardrobes
- ❖ Pergolas
- ❖ Carpentry
- ❖ Bespoke Fencing
- ❖ Property Maintenance
- ❖ Repairs
- ❖ Advice & Planning
- ❖ Shop & Office Fitting
- ❖ Renovation Work



Bob Buckle
Carpentry & Building Services

Bildeston - Suffolk.

For a prompt & reliable service.



01449 740275 or 07580 753020
Email: bobbuckle10@gmail.com

Green Farm Vintage China

Hire


A large range of pretty vintage china and glass to hire for all occasions, including tea parties and weddings.

With every order 20% will be donated to the charity of your choice.

For more information, please contact

Carole Homer:

Tel: 01449 741498

Mobile: 07879265756 

Email: carole.homer@btinternet.com

Dentist

Paul Rolfe BDS

**Veneers & Crowns in a
single visit**

Dental Implants

Family Dentistry

**Lavenham &
Long Melford**

01787 882722

www.paulrolfedental.co.uk

All Seasons marquees

Let us help you to make yours an event to remember

Modern Marquees in a range of sizes

Free no obligation site visit

Heating • Lighting • Furniture • Flooring

Dance Floors • Staging • Linings

Generators • Toilets

Tel Ipswich: 01473 559978

www.allseasonsmarquees.co.uk info@allseasonsmarquees.co.uk



BASE GARAGE LTD

MONDAY – FRIDAY 7.30 – 6.00

SATURDAY 8.00 – 12.00

- TYRES
- EXHAUSTS
- PUNCTURES
- BATTERIES
- WHEELBALANCING
- AIR CONDITIONING
- LATEST DIAGNOSTIC EQUIPMENT
- WELDING TO MOT STANDARD
- SERVICING & ALL REPAIRS TO ALL MAKES OF CARS
& LIGHT VANS FLEET DRIVERS WELCOME
- MOT CLASS 4, 5 & 7
- COURTESY CAR AVAILABLE
- COLLECTION & DELIVERY SERVICE 5 MILES RADIUS
OF GREAT BRICETT
- WINTER CHECKS
- HOLIDAY CHECKS

£10 OFF!

***YOUR MOT WITH THIS
ADVERT***

LOWER FARM ROAD, GT BRICETT, IPSWICH IP7 7DR

01473 658987 / 01473 657704



Shopping Day

in aid of

Cancer Research UK

Wednesday 26th April 2017

10.00 am - 2.00 pm

Chamberlin Hall, BILDESTON

Chamberlin Close, Wattisham Road, IP7 7EZ

Well signed from the village centre and B1115 - Free parking

Lots of lovely things for ladies of all ages - Everyone welcome!

Please join us in Bildeston to **support** Cancer Research UK

Hot Footed ladies shoes & sandals (a whole hall full!), collections of ladies clothes, jewellery, fashion accessories, gifts, plants & more...

£3 Entrance to Cancer Research UK (£2 after 1pm)

Refreshments & light lunches available

Please Like and Share our Facebook page:

www.facebook.com/charityshoppingday

Cancer Research UK is a registered charity in England & Wales (1089464), Scotland (SC041666) & the Isle of Man (1103).



Let's beat cancer sooner

ANDYS LOGS

Well Seasoned Barn Stored Hardwood Logs

Loads Delivered or Pick Up

Wood cut to size for any Heater

Large bags of wood collection only

CALL ANDY 07881 684687

**Bags of wheat for Chicken feed also available collection only*

CPH GARDEN SERVICES

All Jobs Considered, Large & Small

Fencing

Painting & Decorating

Patios, Decking & Pathways

Grounds Maintenance

Garden Clearance

Please contact us to discuss your needs and obtain a no obligation quotation.

Telephone: Paul - [01449 740020](tel:01449740020)

Telephone: Chris - [01787 210536](tel:01787210536)

Email: chris.harman1990@gmail.com

Canine Wellbeing At The Pheasantry

Wattisham, Suffolk IP7 7LA

Dog and Puppy Day Creche

We provide a very special service of looking after your dog or puppy. In the comfort of our own home, whilst you are at work, or whilst your dog is recovering from veterinary treatment. Why not allow your puppy to socialise with other canine friends. Daily collection and delivery is available.

D o g s o n H o l i d a y

Whilst you are on holiday, why not let your canine friend have one too. She/he can come and stay in the comfort of our own home, where she/he will be treated as one of the family.

Also available

Canine Hydrotherapy

For more details phone:

01449 740659 mobile 07956286056

or visit our website: www.caninewellbeing.co.uk

BARGEWELL SKIP HIRE

2 - 8 yard skips

1 ton waste bags

We also collect any full waste bags

Long or short term hire

Delivery 7 days a week

Fast & friendly service

Stowmarket 01449 615056

Mobile: 07770 452378

High Rd, Gt Finborough, Stowmarket, Suffolk
www.bargewellskiphire.com
Credit cards accepted

CHIMNEY SWEEP

ECO SWEEP CHIMNEY SERVICES

NEW POWER SWEEPING METHOD USED
FOR A MORE THOROUGH CHIMNEY CLEAN
THAN BRUSHES.

INDUSTRIAL HEPA FILTERED VACUUM.

FULLY INSURED.

INSURANCE RECOGNIZED CERTIFICATES ISSUED.

SPOTLESS, RELIABLE AND FRIENDLY SERVICE.

ALL CHIMNEYS, WOOD BURNERS, AGA, BOILER
FLUES SWEPT.

GUILD OF MASTER SWEEPS CERTIFICATED MEMBER.



Power sweeping



TEL. 01359 232335

BILDESTON COMMUNITY CYCLING

HAVE YOU GOT A BIKE IN THE SHED? WHY NOT JOIN OUR TUESDAY EVENING RIDES

THEY WILL START ON 25 APRIL, and all start at 6.45pm from the Market Square, and last about an hour. There will be two groups of riders.

A SLOW RIDE, starting at 6 to 8 miles, specifically for new and returning riders, at a speed to suit the riders. Walking on hills is definitely allowed, and no Lycra is necessary!

A REGULAR RIDE of 12 -15 miles for more confident riders.

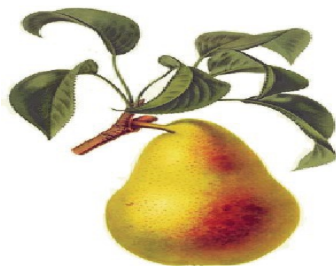
If you used to cycle, or want to start, why not join us this year? Just turn up at the Market Square. Warm clothing and lights may be needed!

If you have any queries, please contact Robin Weaver on 01449 741048. We regret no children under 12, no unaccompanied children under 16.

THE PARISH OF BILDESTON AND WATTISHAM

BILDESTON PRODUCE SHOW

**Saturday 9th September 2017
AT ST MARY MAGDALENE CHURCH**



**THERE IS SOMETHING FOR EVERYONE
ENTHUSIASM IS THE ONLY
QUALIFICATION NEEDED
Set this date aside**

BILDESTON HEALTH CENTRE

	MONDAY	TUESDAY	WEDNESDAY	THURSDAY	FRIDAY
DR HAINSWORTH					
Open surgery	8.30-10.30	8.30-10.30	8.30-10.30	NOT IN SURGERY	8.30-10.30
BY APPOINTMENT	4.00-6.00	4.00-6.00	4.00-6.00		4.00-6.00
DR CLARK					
Open Surgery	8.30-10.30	8.30-10.30	8.30-10.30	8.30-10.30	NOT IN SURGERY
BY APPOINTMENT	4.00-6.00	4.00-6.00	4.00-6.00	2.00-4.00	
DR BEALE					
Open Surgery	8.30-10.30	8.30-10.30	NOT IN SURGERY	8.30-10.30	8.30-10.30
BY APPOINTMENT	4.00-6.00	2.00-4.00		2.00-4.00	4.00-6.00
MATT BREWER ADVANCED NURSE PRACTITIONER					
Open surgery	8.30-10.30	8.30-10.30	8.30-10.30	8.30-10.30	8.30-10.30
BY APPOINTMENT	2.00-4.00	NOT IN SURGERY	2.00-4.00	4.00-6.00	4.00-6.00
PRACTICE NURSE BY APPOINTMENT ONLY	9.00-12.30 2.00-3.30 4.00-5.40	9.00-12.30 2.00-3.30 4.00-5.40	9.00-12.30 2.00-3.30 4.00-5.40	9.00-12.30 2.00-3.30 4.00-5.40	9.00-12.30 2.00-3.30 4.00-5.40
PHLEBOTOMIST	9.00-11.00	9.00-11.00	9.00-11.00	9.00-11.00	9.00-11.00
HEALTH CARE ASSISTANT	2.00-3.20 4.00-5.45	2.00-3.20 4.00-5.45	2.00-3.20 4.00-5.45	2.00-3.20 4.00-5.45	2.00-3.20 4.00-5.45

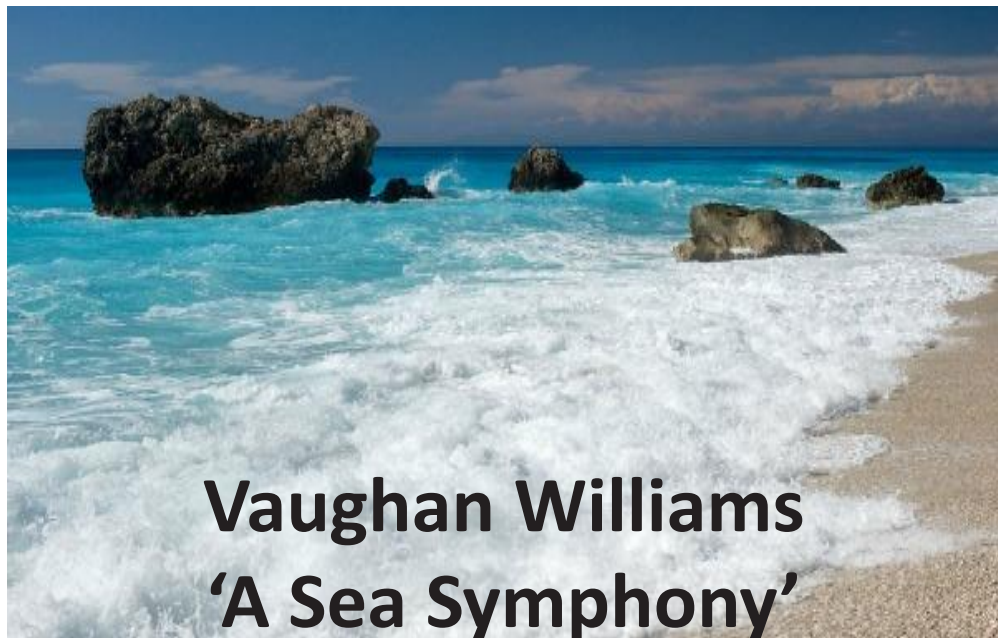
Dispensary 08.30am until 1.00pm (closed for lunch)
2.00pm until 6.00pm
Saturday 09.00am until 12.00pm

SATURDAY SURGERY
09.00 am until 12.00pm
PRE BOOKED APPOINTMENTS ONLY

PLEASE NOTE YOU WILL NOT BE ABLE TO CONTACT THE SURGERY BY
TELEPHONE ON A SATURDAY MORNING AS THE LINE WILL BE
TRANSFERRED TO THE OUT OF HOURS SERVICE

SURGERY TELEPHONE NUMBER
01449 740254 (24hours)

COME AND SING!



Vaughan Williams 'A Sea Symphony'

Spend a day with 'all brave captains' exploring this wonderful piece of music

Saturday 29 April 2017, 10am to 4pm

**Stowmarket United Reformed Church
Ipswich Street, Stowmarket, IP14 1AD**

£15 including a buffet lunch

To book tickets or for more information, contact tickets@stowmarketchorale.org.uk

telephone Lucy Dawson on 01359 240676
or visit www.stowmarketchorale.org.uk

Stowmarket Chorale is
a registered charity

LAXFIELD HOUSE NURSING HOME

BRENT ELEIGH, Nr LAVENHAM, SUDBURY, SUFFOLK

Situated in a quiet village location with beautiful gardens, offering residential and full nursing care for elderly people.

A highly trained team of nursing sisters and care staff provide excellent nursing care with kindness and compassion, ensuring privacy and dignity at all times.

*** Long or short term respite care available ***

A warm welcome is always extended to all visitors



All rooms are well appointed with en-suite facilities.
Nurse Call System, Passenger Lifts, Various Public Rooms

This nursing home was established over 25 years ago by the current proprietor and family with ongoing input and management.

**Enquiries to - Mrs J. Carne RGN, RM, (Matron)
Mrs E. P. Knight RGN, RM, Mr N. Knight (Proprietors)**

Telephone (01787) 247340 / 495

**enquiries@laxfieldhouse.co.uk
www.laxfieldhouse.co.uk**



Member of the Registered Nursing Home Association

FRAIL POLO



Canoe Polo England (www.canoe polo.org.uk) is looking to start a new local club of enthusiasts at either Stowmarket or Hadleigh indoor swimming pools. "This growing sport," according to Haydn Awe, "would suit people who maybe are too frail to play polo on ponies but prefer sitting down in a canoe just gently floating around!" Mr Awe said, "There's no

swinging mallets or pounding horses hooves, just the gentle lapping of waves and throwing a lightweight ball by hand. All safety kit will be provided." Mr Awe, a local canoe polo enthusiast looking for people to make a new club, recently got back into his canoe after a nasty accident when a paddle punctured his ball. He is encouraging people to join the Be Active, Be Inspired programme being run jointly by the media and local sports centres. Ask at Sports Centre Reception for more details.



A & P

WINDOW CLEANERS.

Providing a friendly, reliable and efficient service since 1995.

Andy: 01449 722680. Paul: 01473 604714.

Mobile: 07711 381919.

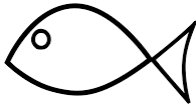
FULLY INSURED.

**With over 50 years of Traditional Window Cleaning experience,
we're at the top of our Profession!**



THE BILDESTON CROWN

Fish & Fizz Village Night



Monday 24th April

£15 pp (includes a glass of fizz)

From 7.30 pm onwards

**Chris & Hayley would like you to join them for “Fish & Fizz”,
an event designed especially for the village.
There will be a choice of 3 fish dishes.**

**This evening is only available on a pre-booked basis and so
be sure to book early to avoid missing out.**

**Keep reading the Bildeston Bugle for future village nights at
The Bildeston Crown**

Telephone to book: 01449 740510

Email to book:

reception@thebildestoncrown.co.uk

Recipe of the Month

Rabbit & Duck Liver Wellington, tarragon cream

with thanks to Chris Lee Head Chef at The Bildeston Crown

Ingredients

- 8 loins of rabbit (each approximately 8cm in length)
- 4 thin slices of duck's liver
- 8 large leaves of spinach, blanched and refreshed in boiling water
- 4 slices of Parma ham
- Block of ready-made puff pastry enough for four 10cm x 10cm sheets

Tarragon cream:

- 2 onions sliced
- 200ml white wine
- ½ bunch of tarragon
- 300ml double cream
- Knob of butter



This recipe is on the Select menu at The Bildeston Crown and Chris will demonstrate it at:

- East Anglian Game & Country Fair on the 23rd April
- Suffolk Show on the 1st June

Method

- Season rabbit loins and liver
- Pull a sheet of cling film over a chopping board. Place a slice of Parma ham on the cling film with two spinach leaves on the ham. Lay a loin of rabbit on the spinach/ham; then a slice of liver and finally a second loin so that liver is sandwiched between the two cuts of rabbit. Roll up with the cling film and tie the ends to create a tight sausage. Refrigerate for 12 hours.
- When ready to cook, roll out the puff pastry as thin as possible into x4 thin sheets measuring approximately 10cm x 10cm.
- Wrap the rabbit sandwich sausages in the puff pastry. Brush with an egg wash.
- Bake at 220°C for 15 minutes; leave to rest for 10 minutes.
- To make the sauce:

- Sauté the onions and the stalks of the tarragon in the butter until the onions are a light golden in colour.
- Add the wine and simmer to reduce.
- Infuse the tarragon leaves in the cream and add to the sauce. Simmer for about 10 minutes so that it is of a thick consistency

Serve the Wellington with the sauce. We suggest baby vegetables and pomme pree as ideal accompaniments.





Spring Craft Fair
Lavenham Village Hall
22nd April 2017 - Book Now!
 Over 30 Fabulous Vendors

Lavenham Village Hall
 Church Street
 Lavenham

Tables £20 Each
 Book Now!



Bildeston Sportsfield Pavilion

looking for a venue?

Function room and sportsfield for parties, events, rehearsals, meetings, clubs and much more.

For more information and competitive rates please ring 01449 741563
 or e-mail secretary@sportsfield.bildeston.org



BULL
CARPENTRY
& CONSTRUCTION

All carpentry & home improvements including kitchens, bathrooms, doors, fencing, decking, floors, roofing and much more...

Tel: 07881 360 650
 Email: info@bullcc.co.uk

www.bullcc.co.uk

N D ROSE
 Int / Ext Decorating

- Decorating
- Wall / Floor Tiling
- Gutters Cleaned / Repaired / Replaced
- General Building Maintenance

Local established tradesman 25 years experience
Free estimates good rates
References available

Tel: 01787 211042
 Mob: 07518 040465
 3 Fen Street Boxford CO10 5HL



01449 744966

info@clayhillcattery.co.uk

www.clayhillcattery.co.uk



LUXURY CAT HOTEL

5-Star family run cattery exclusively for cats

Secure, hygienic all year round boarding

Diets tailored to cat's needs and preferences

Indoor purpose-built luxury suites

Temperature controlled environment designed to be warm and cosy in winter and cool and ventilated in summer

Personal care and attention, a home-from-home for your cat

Recommended by vets

Free grooming, nail clipping and administration of medication

Ample Parking or try our collection and drop-off service

Fully licensed by Babergh District Council

24/7 on-site supervision and CCTV surveillance

Idyllic countryside setting surrounded by wildlife

Visits are encouraged prior to booking to discuss any specific requirements for your cat

Woodside, Clay Hill Lane, Wattisham, IP7 7JS



APRIL COTTAGE CATTERY

April Cottage, Powney Street, Milden, Ipswich. IP7 7AL



Newly opened Licenced Cattery exclusively for cats.



Large light airy chalets with exercise areas overlooking stables and fields.

Quiet areas for shy cats or busy window views for those needing entertainment.

Facilities to cater for elderly cats, kittens or cats with special needs.

All diets catered for (except prescription).

Daily grooming and administering of medicines are free of charge.

Family chalets which can cater for up to 6 cats (same household only).

Pick up and delivery service free up to 5 miles (£1 for every mile thereafter to a maximum charge of £10).

Prices start from £7.50 a day.

Special rates for long stays.



Please call Anne or Kevin on 01787 247302 or 07985 404813

Email: info@april-cottage-cattery.co.uk www.April-Cottage-Cattery.co.uk

www.facebook.com/aprilcottcats

**Now Frying At Market Square
Bildeston**

Thursdays 4pm – 7.30pm

Fridays 11am – 1:30pm



**Local Mobile
Fish & Chip Shop**

**Functions Catered For
Shows • Parties
Weddings • etc.**

**Telephone
01473 830771**

BILDESTON ELECTRICAL

Rewires, Extensions, Board Changes or New Installations

Any Alterations to Existing Installations

(lights, sockets, etc.)

Contact Ian

01449 743664 or 07754 723685

BILDESTON PARISH COUNCIL

DRAFT Minutes of the meeting of Bildeston Parish Council

held on 13th March, 2017 in Chamberlin Hall at 7.30 pm

In attendance:

Councillors: A Guttridge (Chairman), D Dempsey, A Hubbard, R Lester
Also Present: D Blackburn (Clerk), County Councillor Mrs J Antill
One member of the public

The Chairman, Councillor A Guttridge opened the meeting and welcomed everyone present.



C163/16/17 APOLOGIES FOR ABSENCE

Apologies for absence had been received from Councillors Bullen and Taylor and from District Councillor M Creffield.

C164/16/17 DECLARATIONS OF PECUNIARY AND NON-PECUNIARY INTERESTS

The following declarations were made:

Kings Pightle Management Committee – Councillors Hubbard

Parish Council's representative on the Chamberlin Hall Management Committee – Councillor Guttridge.

(Councillor Lester arrived late and the Clerk recorded his regular declarations in respect of the Sportsfield Management Committee, Kings Pightle Management Committee and Parochial Church Council).

C165/16/17 DISPENSATIONS IN RESPECT OF PECUNIARY INTERESTS

There were none.

C166/16/17 MINUTES OF PREVIOUS MEETING

It was **AGREED**: That the minutes of the meeting held on 13th February, 2017 be signed by the Chairman as a correct record.

C167/16/17 DISTRICT COUNCILLOR'S REPORT

A written report had been received from District Councillor Creffield on the following matters:

- District Council Budget: The Babergh part of the Council Tax demand for 2017/18 would increase by an average of 10p per week, ranging from £3 to £10 per year increase depending upon the Band of the property.
- Opportunity Service Areas: Ipswich was due to become one of twelve Opportunity Service Areas nationally which would be able to access a package of education programmes designed to help young people progress from nursery school through the education system and into employment.
- TV Coverage: The TV programme "The Housing Enforcers" currently being shown on BBC 1, would feature local housing problems in Babergh and Mid Suffolk.
- New District Council Accommodation: Babergh and Mid-Suffolk District Councils were due to be re-located to Endeavour House, Ipswich later in the year. There would be face to face customer access points at 54 Ipswich Street in Stowmarket and at Sudbury Town Hall.

C168/16/17 COMMUNITY CENTRE USE

Further to Minute C151/16/17, Members of the Parish Council discussed arrangements for a meeting on the promotion and use of Chamberlin Hall. The meeting would be held on

Monday, 27th March, 2017 at 7.30pm. Sue Clark, Manager of Lavenham Village Hall had agreed to attend the meeting to provide her insights into the running of a Village Hall.

It was AGREED: That the Clerk liaises further with those who have expressed an interest in attending the event to confirm that they will be present.

C169/16/17 APPOINTMENT OF CLOCK WINDER

Further to Minute 150/16/17, it was noted that the position of Clock Winder had been advertised with one response received. Councillor Hubbard reported that a briefing had been provided on the technical and safety aspects of the role by Haward Horological Limited as part of a site visit. The clock also been serviced which had rectified problems the problems that had been encountered recently with its time-keeping.

It was AGREED:

- a. That Jayne Harrison be appointed to the position of Clock Winder;
- b. That the postholder shall receive an honorarium for the performance of their duties in accordance with Standing Orders; and
- c. That the Clerk prepares a letter of appointment for the postholder to sign.

C170/16/17 GROUNDS MAINTENANCE ARRANGEMENTS

This item was deferred pending a report from Councillor Taylor at the next meeting.

C171/16/17 CLERK'S REPORT

The Clerk reported that notification had been received from Mr Robin Sidgwick that the Annual Village Litter Pick would take place on Saturday, 1st April, 2017. It was noted that the participation of volunteers in this event was covered under the Parish Council's insurance policy subject to an adequate and effective risk assessment being carried out by the event organiser. The Clerk also referred to the circulation of the latest edition of Babergh District Council newsletter and steps being taken by Babergh and Mid-Suffolk District Councils to create a Joint Local Plan. The Parish Council also continued to receive information from the Babergh Alliance of Parish and Town Councils (BAPTC) which was a loosely associated group of Town and Parish Councils in Babergh District which sought to share useful information planning issues in Babergh and work together to highlight and resolve issues of mutual concern. Councillor Guttridge indicated that he had attended a recent BAPTC meeting as an observer and was of the opinion that the attendees were seeking to work constructively to influence the approach to planning and development in Babergh district, having particular regard to some of the large housing developments that were proposed in the area.

It was AGREED: That Councillor Guttridge be appointed as the Parish Council's representative to attend meetings of the Babergh Alliance of Parish and Town Councils.

C172/16/17 COUNTY COUNCILLOR'S REPORT

County Councillor Mrs Antill reported upon the following matters:

- Budget: The County Council had approved its budget and whilst there was no increase in respect of services generally, the County Council would be levying an increase of 3% to support Adult Social Care provision.
- Suffolk Annual Public Health Report: The County Council would be focussing on improving mental health services in accordance with the recommendations contained within the Annual Report.
- Disabled and Specialised Educational Needs Service: A poor Ofsted report had been received for these services which was contrary to improvements in education generally, across Suffolk.
- Bildeston Highways Issues:

- a. There had been no progress regarding the installation of Gateways in Bildeston and an urgent meeting was being sought by County Councillor Mrs Antill with the Assistant Director for Highways.
- b. The installation of bollards near to the Primary School had been added to the approved list of works.
- c. It was understood that a road closure order would be required before the three bollards on the High Street could be repaired. These works had not, as yet, been added to the approved list of works.

C173/16/17 COMMUNITY EVENT

Further to Minute C152/16/17, Councillor Lester proposed that a Community Event should be held to which all community groups that were active in the village could attend to raise community awareness of their existence and encourage participation in their activities. Councillor Guttridge suggested that the event should be combined with the Bildeston Fun Day and he undertook to find out more details of the proposed date and arrangements.

C174/16/17 VILLAGE AMENITIES

Councillor Lester reported that the Kings Pightle had an active group of volunteers undertaking regular maintenance of the site. The Management Committee of the Sportsfield was depleted. He gave notice that the Parish Council would be asked shortly to consider how it might support the Sportsfield specifically with regard to the annual mowing costs which exceeded the income obtained from the hire of the football pitch.

Councillor Hubbard reported that the Grounds Maintenance Operative had installed a new stopcock at the Sportsfield and it was hoped that this would help to identify where the water leak was coming from.

Councillor Hubbard reported that he had arranged for the spoil to be removed from the cemetery by Harry Smith Aggregates.

Councillor Lester referred to the maintenance of the Wildflower Meadow. Advice would be sought on this matter as it was understood by Members of the Parish Council that it was cut too late in the previous year which had allowed the thistles to set seed and grow.

Councillor Hubbard reported that there was a wide variety of personal artefacts near to the headstones in the cemetery. Members of the Parish Council were invited to consider whether or not it should seek the removal of some of the items, particularly those that were becoming unsightly over time.

It was AGREED: That Members of the Parish Council visit the Cemetery before the next meeting before a further discussion on this matter.

Councillor Hubbard reported that the hedge clippings along the pavement on Church Lane had not been removed by the contractor. The Clerk undertook to raise this matter with the land agent, Strutt & Parker.

Councillor Lester observed that the footpath up Church Lane was well-used and the view of the village from the top of the lane near to the Church was impressive. He enquired if the mowing of the grass verge adjacent to the footpath could be incorporated into the work schedule of the Grounds Maintenance Operative, if the ride-on mower was already being driven to, and from, the cemetery. Councillor Lester undertook to investigate this matter further and report back to the Parish Council.

The footpath from the Sportsfield to Hitcham Road was currently unpassable. Councillor Dempsey indicated that he would report the matter to Suffolk County Council.

Councillor Guttridge reported that the quiz night at Chamberlin Hall had been successful.

It was noted that despite the visits made by Command Pest Control to various sites in the village, the problem with an infestation of moles at the Sportsfield remained. The Clerk was asked to seek

advice on further steps that could be taken and the associated costs.

C175/16/17 ANNUAL PARISH MEETING

The Clerk reported upon arrangements for the Annual Parish meeting which would be held on Monday, 24th April, 2017 at 7.30pm. Councillor Lester suggested that as a minimum, the Parish Council should seek reports from all bodies for which it acted as custodian trustee. The Clerk had contacted the Police, the Primary School and the local County and District Councillors. In addition, Councillor Hubbard undertook to liaise with the Allotments Association to invite them to submit a report.

C176/16/17 FINANCIAL REPORT – AUTHORISATION OF PAYMENTS AND NOTING OF RECEIPTS

Acknowledgement had been received from the Pension Regulator of the Parish Council's declaration of compliance in connection with its automatic enrolment duties. Notification had been received from SAAA (Smaller Authorities Audit Appointments), that external audit services for Suffolk would change from BDO to PKF Littlejohn LLP. The new contract would be effective for a five-year period from 2017/18 to 2022/23.

The Chairman reported on delays in the authorisation of payments. Three Councillors were able to undertake this role and it was felt that it would be useful to have more Councillors able to authorise in the future. The Clerk was requested to obtain and circulate the relevant paperwork. The Clerk reported that the Parish Council was not compliant with all aspects of the Transparency Code. It was felt that with some appropriate advice from Councillor Taylor on the use of the new laptop, this should be easily remedied.

It was AGREED:

That the following payments be authorised:

Payee	Description	Budget Category	Amount (£ incl. VAT)
David Blackburn	Clerk's Pay	Salaries & Expenses	£189.46
David Blackburn	Expenses	Salaries & Expenses	£17.33
Adrian Chinery	Grounds Maintenance	Salaries & Expenses	£105.68
Command Pest Control	Mole Treatment	Playgrounds & Open Spaces	£252.00
Gotelee Solicitors	Judicial Review	Administrative & Legal	£105.60
Babergh DC	Bin Emptying	Bins	£531.70
Suffolk CC	Street Lighting	Street Lighting	£2103.97

(Note: All the above are payable from the General Fund).

It was NOTED: That the following receipt was anticipated before the end of the financial year:

Payee	Description	Budget Category	Amount (£ incl. VAT)
Great Finborough Parish Council	Speed Gun & Signage	Traffic Calming	£62.66

C177/16/17 PLANNING APPLICATIONS

Part A: Planning Application - Consultation with Bildeston Parish Council

There were none.

Part B: Planning Applications – Decisions of Babergh District Council

There were none.

C178/16/17 PUBLIC SESSION

Mr Peter Hutchings indicated that he had moved to Bildeston and was interested in playing an active part in parish matters. He was currently the Chairman of Kettlebaston Parish Council and following on from the discussion earlier in the meeting about the cemetery (Minute C174/16/17 refers), he spoke of the steps taken in Kettlebaston to improve the appearance of its cemetery.

C179/16/17 MATTERS TO BE BROUGHT TO THE ATTENTION OF THE COUNCIL

Councillor Hubbard noted that the Bildeston Lions which had been bequeathed to the village were not being displayed at the Red Lion. The Clerk would obtain contact details for the owner of the premises and Councillor Hubbard would pursue.

Councillor Dempsey reported that garden waste was being deposited into the brook to the rear of Chapel Street. He would raise this with Anglian Water.

Councillor Dempsey reported that there had been some smashed glass bottles at the Rotheram Road play area which had been cleared.

Councillor Dempsey said that there appeared to be an abandoned white van on the Market Place near to the clock. It was believed to have been there for 3 to 4 weeks. Councillor Dempsey undertook to report the matter to Babergh District Council.

C180/16/17 CONFIDENTIAL BUSINESS

It was AGREED: That the public be excluded from the remainder of the meeting in accordance with the Public Bodies (Admissions to Meetings) Act 1960.

a. HENRY MORPHEW'S BEQUEST

Councillor Dempsey reported that the final steps would now be taken by the Parish Council's legal adviser in undertaking the necessary registration with the Charity Commission.

b. JUDICIAL REVIEW (B/15/01433/OUT/GP)

Councillor Guttridge provided an update on liaison he had undertaken with the Parish Council's legal advisers.

The meeting closed at 9.08pm.

APOLOGY

Last month's Bugle omitted the contact number for people who would like to collect their loose change in spare boxes for the **Children's Society**. Many apologies to Joey Honeybone and the Children's Society. Joey has spare boxes and his contact number is **01449 741994**.

BILDESTON PARISH COUNCIL

We would be delighted to hear from anyone who would be interested in joining the Parish Council. We meet once each month and deal with a whole range of matters that affect the everyday life of the village.

Your background is unimportant to us as we are seeking people from a variety of backgrounds to join the Parish Council so that we consider different views on local matters.

We publish our minutes in "The Bugle" each month, which give a flavour of what we do.

Our work involves a lot of practical matters such as grounds maintenance, play areas, bin emptying, providing grants to local bodies, support for community events etc.

It also involves more technical issues such as the administration of the estate of a former resident and the pursuit of an action in the High Court challenging a major new housing development in Bildeston. We seek appropriate professional advice with these more complicated matters.

Whatever your background there is always something of interest to deal with.

More information about the role of Parish Councillor is available from "The Good Councillor's Guide" which is available at: www.nalc.gov.uk/library/publications/801-good-councillors-guide;

For further information about becoming a member of Bildeston Parish Council please speak to one of our existing Parish Councillors (if you know them already), or contact the Parish Clerk.

David Blackburn

Parish Clerk

clerk@bildeston.suffolk.gov.uk

01449 721369



**Kings Pightle
Nature Reserve**

From the comments in the visitor's book lots of people really enjoy visiting the bird hide and feeding the birds. It is a popular feeding station for a wide variety of birds. In order to maintain this we need to keep providing the food, the costs are quite high, so we are asking if any of you would like to sponsor a month's feed at £20.00. Your name can be added to the Friends Board which we will put up in the hide or you can remain anonymous. Thank you to all those who top up and look after the hide.

For more information Elaine Talbott 01449 740721 or elainetalbott@hotmail.co.uk



© Can Stock Photo - csp17711953

CHAMBERLIN HALL PRESENTS

B I N G O

on

Friday 31st March 2017

Chamberlin Hall, Bildeston

**CASH PRIZES INCLUDING
JACKPOT**

**DOORS OPEN AT 7.00PM
EYES DOWN AT 7:30PM**

**FOR FURTHER DETAILS TELEPHONE
ADRIAN ON (01449) 741253**

Stuart Walker

Decorating, Painting & Refurbishments



A locally based company offering an honest and reliable service

Painting - Decorating - Refurbishments - Repairs

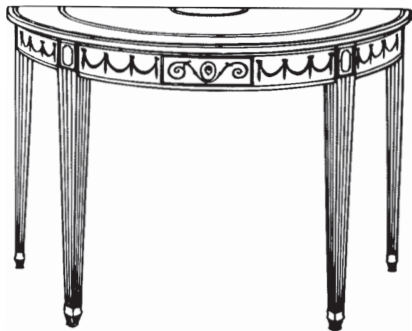
All work considered indoors & out! Fully Insured & free quotations provided

Please contact Stuart on Tel: 07711 606464 or 01449 740387

Email: stuma1@hotmail.co.uk

Antique Renovations

The Restoration experts



Lavenham Studios, Brent Eleigh Road, Lavenham

Tell: 01787 248511

www.antique-renovations.co.uk

email - antiquerenovations@live.co.uk

Brook Farm Studio

Bildeston's studio for painting, pottery,
figurative drawing, felt making, crafts
and creative embroidery

Website: www.brookfarmstudio.co.uk

email: brookfarmstudio@gmail.com

Call Hazel 07432 138966/01473 823819

GIDNEY PLUMBING & HEATING

Tap Changes, Ball Valves, Shower Pumps,
Water Softeners, Hot Water Cylinders,
Bathroom, Wet room & Kitchen Installs,
Radiator & Valve Replacements,
Underfloor Heating, Heating System Repairs,
Renovation & New Builds.

24 Hour Emergency Cover
Professional & Reliable Service

07534525263
01449 258254

gidneyph@outlook.com
www.plumbinginsuffolk.com

D'ENZA



HAIR @ BEAUTY SALON at
"KERSEY MILL"

"April Offers"

1: Spring offer~ ½ leg wax, OPI shape and paint Manicure & Pedicure

Special Price of only £35

2: Relaxation offer~ Elemis Taster Facial with a back, neck & shoulder massage

Special Price of only £39

3: Reflexology available Monday's & Tuesday's- Free consultation

Special Price of only - 30mins £35 - 45mins £45

4: Sports Massage available Monday's & Tuesday's- Free posture analysis

Special Price of only - 30mins £35 - 45mins £45

***Other additional treatments include Threading, Russian eyelash extensions & Gel nail extensions**

***From the 18th April, we will have 3 new hairdressers arriving who have come from a very establish salon in Hadleigh.**

The above offers can not be used with another offer.

Please telephone for more information or make a booking on: **01473 829069**

For opening times & brochure please look at our website: www.denzahairandbeauty.com



Unit 1 Church View Kersey Mill, Kersey, Ipswich, Suffolk. IP7 6DP.



****Pilates and Yoga classes now at Kersey Mill****

If you want to exercise both your body and mind as well as improving your sense of well-being, strength, flexibility and mobility then Pilates is for you! We are passionate about bringing the benefits of Pilates/Yoga to everyone and with a highly qualified team of instructors we can certainly help you improve muscle tone and core stability, building strength from the inside out, re-balancing the body and bringing it into correct alignment.

BEGINNERS CLASSES AND FREE TASTER SESSIONS* ARE NOW AVAILABLE AS WELL AS PRIVATE 1:1's

** on selected classes*

We now offer small Yoga classes too to add to your well-being experience at Kersey Mill. Please get in touch if you would like any more information.

Whether you are new to Pilates/Yoga or have been enjoying the benefits for years, we feel confident that we can accommodate your needs to achieve results.



Body Control Pilates is a registered
trademark used under licence

Pilates Works, The Studio, Kersey Mill, Kersey,
www.pilatesworks4u.com | pilatesworks4u@gmail.com

Tel: 01473 823 500 or 07855 394703

THE FLOWER SHOP

AT KERSEY MILL

Local and Nationwide deliveries available

☎ 01473 805156

At The Flower Shop our team create all aspects of Floristry from bouquets, arrangements, baskets, wedding and sympathy flowers.

Our florists create beautiful arrangements just for you. We use fresh seasonal flowers, purchased daily in all bouquets, baskets and arrangements.

Visit The Flower Shop today, order online, call and collect or arrange a delivery.

🌐 www.theflowershopkm.com

✉ sales@theflowershopkm.com

The Flower Shop at Kersey Mill, Ipswich Suffolk IP7 6DP



Andrew Bingham

INDEPENDENT FUNERAL SERVICE

Local Caring Independent Funeral Service

24 Hour Personal Service * Private Chapel * FREE Parking

www.andrewbingham.co.uk

01449 771666

The Nutshell, Milton Road South, Stowmarket, IP14 1EZ



Golden Charter
Funeral Plans



From Rev'd Liz.... Lots of information, requests and



advance notices this month:

- ❖ Easter Lilies - Every year we buy lilies and other special flowers to decorate the church for Easter. Because of the high charges for the lilies, we have begun a special Resurrection Book where people might like to name those they have loved and lost as they donate towards the Easter flowers. We open this book on Easter morning as we celebrate the resurrection of Jesus.
If you would like the name of someone written in the book, please print their name clearly on the list at Bildeston Church and we will endeavour to ensure their name is printed in the Resurrection Book for you.
- ❖ Passover on Maundy Thursday 13th April from 7pm at Semer Village Hall. This year we have a visitor who is going to show us how a Jewish family celebrate Seder and that will be followed by our meal together. Tickets only @£5 each available from Rev'd Liz 01449 740085. We are sharing this occasion with Monks Eleigh Benefice and so our share of the tickets is limited to the first 25 people who ask.
- ❖ A Benefice Church Choir - would you be interested in joining a choir to sing at least once a month for our Benefice services and special occasions? We have already got someone who is keen to co-ordinate it and someone to play and conduct. We would probably practise at Bildeston Church either daytime or evening to start with. You can let me know - my number is above, or Jan King at Naughton would be pleased to hear from you. Phone her on 07712424901.
- ❖ May Market - this year it will be on Saturday 27th May but at the church not on the square for a change - at least we know we'll be OK if it's a rainy day. There will be all the usual stalls and refreshments to entice you, especially cakes, jams and plant.
If you can plant some roots or cuttings in readiness that would be great and if you would like to help on the day do let me know.

*Easter Blessings, Joy, Peace and
chocolate X Rev'd Liz*



ONE FRIDAY.....at St Mary Magdaene Church.



Friday 14th April: from 10.45am with coffee and hot cross buns.....

A Good Friday experience.

A dramatic narration of the events of the first Good Friday interspered with the presentation of 14 art/craft works made by local children and adults from all our villages, to reflect words from the story such as Betrayal, Fear, Forgiveness, Tears.

It will end around midday and there will be soup and bread for lunch for those who want to stay.

Saturday 15th April: From 10am - A Big Coffee Morning with cakes, crafts, balloons, raffle, games and an Easter Egg Hunt: search for a token to exchange for chocolate eggs on Easter Sunday.

Sunday 16th April: Easter Day Service for all ages at 11.00am with candles, singing, chocolate, eggs, Alleluias and refreshments.



I would like to say thank you to my family and friends who visited me in hospital and at home. Also, thank you for their help and the many get well cards I received. Jean Chinery

**BILDESTON w WATTISHAM,
WHATFIELD w SEMER, NEDGING , NAUGHTON & LINDSAY**

Church Services – APRIL 2017

Date	Time	Service	Place	Officiant	Organist
April 2nd 5th of Lent	9.30am	Holy Communion	Semer	LL	—
	11.00am	Family Service +APCM	Whatfield	LL	Henry
	11.00am	Morning Prayer	Nedging	?	Jill
	11.00am	Family Service	Bildeston	?	Marie
April 9th Palm Sunday	11.00am	Holy Communion	Bildeston	Jackie S.	Marie
	11.00am	Family Service	Naughton	LL	Jill
April 12th	9.30am	Morning Prayer	Whatfield	LL	---
April 13th Maundy Thursday	6pm	BCP H. Communion	Chelsworth	Rev. C. Mansell	Tickets only for Passover
	7pm	Passover service and meal with Monks Leigh Benefice	Semer Village Hall	Andrea King	
April 14th Good Friday	11.00am (10.45 for coffee and Hot Cross Buns)	Community Stations of the CROSS readings and presentations	Bildeston	LL	
	12.00	Lent Lunch			
April 16th Easter Day	9.30am	Holy Communion	Nedging	LL	-----
	11.00am	Holy Communion	Lindsey	?	Jill?
	11.00am	Family Service	Bildeston	LL	Marie
	11.00am	Morning Prayer	Semer	DA	Jill
	11.00am	Holy Communion	Whatfield	Jackie S.	?
April 23rd 2 of Easter	10.30am	Benefice Holy Communion + Bildeston's APCM	Bildeston	LL	Marie
April 26th	9.30am	Morning Prayer	Whatfield	LL	----
April 30th 3 of Easter	10.30am	Deanery Holy Communion	Hintlesham	Rev'd ffrench	—

Baptist Church, Duke Street, Bildeston

Jim Haley tel: 01449 740716 email: bildestonbc@gmail.com

Service every Sunday morning at 10:45

Lunch Club: at 12:30 on the first Wednesday of each month –

All are most welcome

Community Coffee Centre: Every Friday from 09:15 to 11:30am

Enjoy meeting old and new friends at these events!

‘Craft it Together’ - First Monday of each month at 7:00pm.

Bring along your craft activities and join us for an informal, relaxed evening
share ideas, gain new skills or just enjoy doing your own thing

Drinks provided.

01449 740716 or 01449 741606 for more information

‘Men’s Breakfast’ - last Saturday of each month at 8am



Bildeston Community Coffee Centre

Baptist Church 9:15-11:30 **Every Friday**

Lunch club

Baptist Church 12.15 for 12.30pm start.....**1st Wed every month**

Craft it Together

01449 740716/741606 for details.....**First Monday every month**

Strollers & Striders

Baptist Church Car Park 10:00 **Every Monday**

Bildeston Upbeat Contemporary Choir

Bildeston Primary School 7.00 to 9.00pm.....**Every Monday in term time**

Baby & Toddler Group

Baptist Church 9:15-11:30 **Every Tuesday**

Annual Village Spring Clean

Market Square 10.00am.....**Sat 1st**

Ladies Club

7.30pm Chamberlin Hall Katrina Colchester Owl Rescue.....**Thurs 6th**

Parish Council Meeting

Chamberlin Hall 7.30pm.....**Mon 10th**

FOBS Coffee Morning

10.00am-12.00 Chamberlin Hall.....**Sat 21st**

Annual Parish Meeting of Electors

Chamberlin Hall 7.30pm.....**Mon 24th**

Fish and Fizz Night

Bildeston Crown 7.30pm please book.....**Mon 24th**

Tuesday Evening Bike Ride

6.45pm Market Square.....**Tues 25th**

Cancer Shopping Day

Chamberlin Hall 10.00am - 2.00pm.....**Wed 26th**

More details on these events inside

Please tell us about your forthcoming events in **May**

email: editor@bildestonbugle.co.uk



When you're finished with this Bugle please pass it on or recycle it.