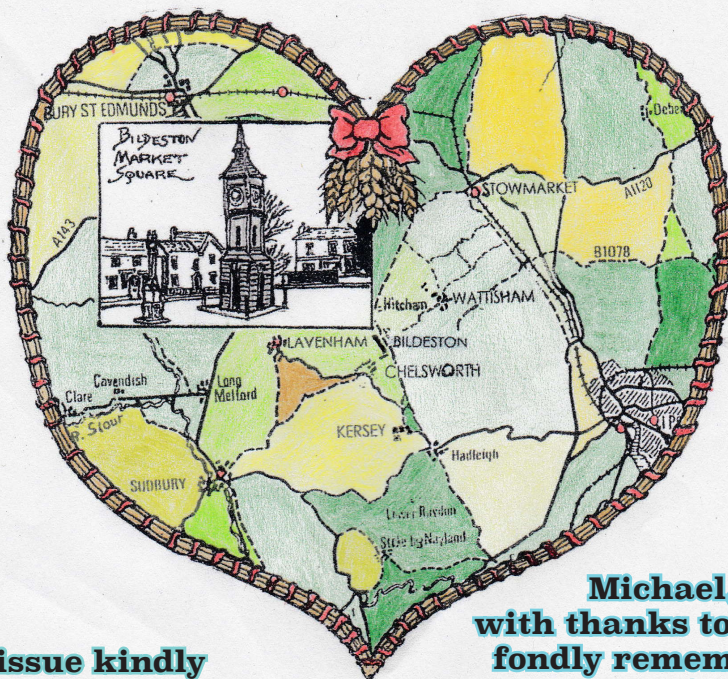


**Issue number 305**  
**March 2016**



**This issue kindly  
sponsored by -**

**Michael,  
with thanks to all his  
fondly remembered  
clients from  
Michael's Haircare days**



Saint Mary's Church, Bildeston, Suffolk.

**The village magazine produced for the people of Bildeston**



## BILDESTON BUGLE ADVERTISING AND FREE CONTRIBUTION INFORMATION

Our aim is to provide every resident in Bildeston with a magazine which provides information of local interest FREE OF CHARGE. To that end we are required to be efficient in the space we use to print free notices. We endeavour to include interesting items, announcements for events open to the general public for free and items of a charitable nature free of charge. Ongoing free announcements need to be reduced to minimum size or make a contribution towards printing costs. Please check with us before submitting your advert and ALWAYS provide us with all of your contact details in order for us to send a receipt.

email: [editor@bildestonbugle.co.uk](mailto:editor@bildestonbugle.co.uk)

### *Sponsor a 'Bugle' – £15 per issue*

includes a brief message of your choice on the cover of the magazine

### *Advertising Rates*

	1 issue	6 issues (15% disc)	12 issues (30% disc)	
1/4 page	£3.00	£15.00	£26.00	65mm W x 92mm H
1/2 page	£6.00	£30.00	£50.00	134mm W x 92mm H
Full page	£12.00	£60.00	£100.00	134mm W x 190mm H

#### THE SMALL PRINT

All adverts, payments and items are required by the 17<sup>th</sup> of the month for inclusion in the following month's issue (except December).

The earlier free contributions are received the greater the chance of inclusion.

Please make cheques payable to Bildeston Bugle and send to:

The Editor, Bildeston Bugle, 14 Squirrells Mill Rd, Bildeston IP7 7DY

Receipts cannot be issued without your full postal address.

If we do not receive payment by the 17<sup>th</sup> of the month your advertisement may NOT be included

### **The Bildeston Bugle Management Team is:**

Alan Jacobs (Editor) 01449 741645

Christine Hubbard (Treasurer) 6 Manor Road 01449 740633

Tricia Baldwin (Advertising Revenue)

Angie Biddulph (Bugle Team Liaison)

Stuart Law (Assistant Editor)

Alison Sims (Marketing)

# ED'S COMMENT

At last it's March, the official beginning of Spring. It's been a strange winter, with the warmest December on record and a January that brought every kind of weather in extremes, mostly affecting the North of England this time with storms, floods and severe high winds. The damage from flooding in particular to people's homes, local infrastructure and livelihoods has been awful. Floods, especially, take such a long time to get over. February, so far, has been colder, a bit damp, but still not too bad.

So it's no wonder Spring has always been such an important time of year full of the hope of new life, new growth and a huge relief that Winter is over.

Well almost, for as Henry Van Dyke once said:

***"The first day of spring is one thing, and the first spring day is another. The difference between them is sometimes as great as a month!"***

Good quotes are brilliant. Someone, at some time has put into words exactly what you think and what you feel about certain things. The season of Spring is no exception and is a great time of year for quotes. Here are some famous ones:

***"It was one of those March days when the sun shines hot and the wind blows cold: when it is summer in the light, and winter in the shade."***

Charles Dickens

***"I love spring anywhere, but if I could choose I would always greet it in a garden."*** Ruth Stout

***"Spring is when life's alive in everything."*** Christina Rossetti

Perhaps you enjoy a more humourous take on the subject. Here is one about March:

***Indoors or out, no one relaxes***

***In March, that month of wind and taxes.***

***The wind will presently disappear;***

***The taxes last us all the year.*** Ogden Nash

Humour can capture a succinct thought just as effectively as a serious phrase.

As this is March and the beginning of Spring have a chuckle at these examples:

***"It was such a lovely day that it seemed a pity to get up."*** Somerset Maugham

***"It's Spring in England. I missed it last year. I was in the bath."*** Michael Flanders

And this one from the irrepressible genius of the wonderful Tommy Cooper:

***"Today has been 80 degrees in the shade. I was clever, I stayed in the sun!"***

Hope that's cheered you up and made you ready for a lovely Spring time in and around Bildeston. If the weather is nice, you might even think about enjoying driving around our county's highways and by-ways, glad that it's the 21st century and not the 19th. Read Mike's second instalment of coach travel in Countryside Observer to find out why.



# Lindsey Painting & Decorating Services

Professional & reliable interior and exterior home decor. Paint, Wallpaper Coving etc. Plus other allied services, Woodwork, tiling, laminate flooring. Curtain hanging, tracks/pelmets fitted.

Terry Peters

Home 01449 741483

Mob 07809 571790

Email [tac59@talktalk.net](mailto:tac59@talktalk.net)

Friendly Experienced  
Teacher offers  
Individual

**MATHS Tuition**

Speciality  
Confidence Building

**KS1 – KS3**

Call Colin Plummer on  
01449 736918  
for details and availability  
or email:  
[colinp52@btinternet.com](mailto:colinp52@btinternet.com)

*Angel Delights*

**Outside Caterer &  
Specialised Confectioner**

Weddings – Christenings – Funerals  
Birthday Parties - Barbecues - Dinner Parties

Tradional tea room now open  
at 85 high Street Hadleigh

**CAKES FOR ALL OCCASIONS**

Contact Helen  
01473 828191  
[info@angel-delights.com](mailto:info@angel-delights.com)  
[www.angel-delights.com](http://www.angel-delights.com)



# BILDESTON PRIMARY SCHOOL

## KS2 Hadleigh Pyramid Basketball Event

A team of KS2 children were selected to represent the school in a Basketball tournament held on Wednesday 27 January 2016 at Hadleigh High School. Miss Pellegrotti went along to support our team who had a great time and enjoyed competing with the rest of our pyramid of schools.

## Dance East Workshop

Three pupils were selected to represent the school at a Dance Workshop at Whatfield Village Hall. This took place on Monday 1 February. The Northern Ballet visited the pupils with their new ballet for children "Tortoise and the Hare". The workshop involved storytelling and creative movement with a professional dance artist.

## KS1 Reading Cafe

Our KS1 Reading Café was a chance for parents/carers to find out about the books that we are sharing with the children in school and some ideas that you can use when reading books at home. There was also a chance to look at the wide range of fantastic books that the children enjoy reading in school and to take part in art and craft activities.

I think the parents that attended would agree that they were able to **hear** great reading, **make** fun crafts, **eat** yummy treats and **enjoy** a relaxed atmosphere.



## KS2 PHSEe Enrichment Day

Our KS2 children enjoyed taking part in a **Personal, Social, Health and Economic Education** enrichment day on 3 February.

Activities included a drama session with various scenarios, Healthy Heart with Ms Brooker, Making Healthy Soup and Rites of Passage

## KS2 Victorian Day

Monday 18 January was a very exciting day for our KS2 pupils.

The children dressed in Victorian clothes and changed their names to typically Victorian names for the day. They then spent a fun and informative day with Mistress Rodgers and Colonel Winchurch learning about the Victorians and experiencing a Victorian school day.

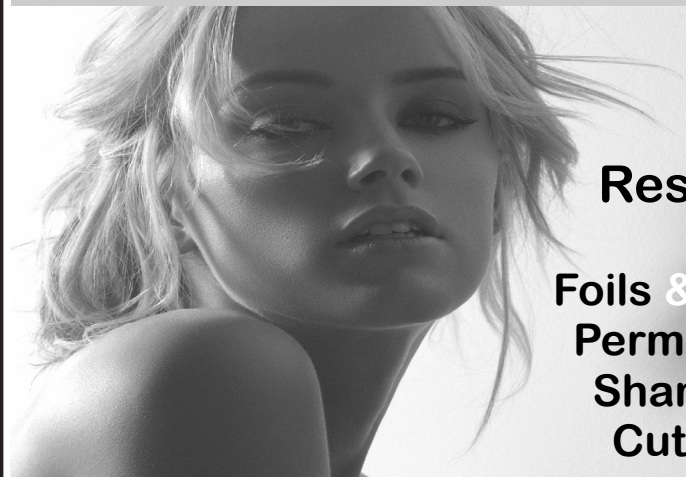
***If you are considering Bildeston Primary as a school for your child, we would welcome a visit. Please phone the office on the number below. We would love to meet you.***



**Bildeston Primary School**  
**Newberry Road, Bildeston, Ipswich, Suffolk, IP7 7EU**  
**Telephone: 01449 740269**  
**Website: [www.bildeston.suffolk.sch.uk](http://www.bildeston.suffolk.sch.uk)**

# *Studio 66*

*Ladies and Gents Hairdressers*



**Restyling**

**Foils & Highlights  
Perms & Colours  
Shampoo & Sets  
Cut & Blow Drys**

**Friendly Service from our Professional Team  
Tue & Wed Senior Citizens**

**\*\*\*special rates \*\*\***

**Opening Times Tues - Friday 9 - 5 pm Sat - 8 - 1pm**



**Tel 01449 740644**

**52A High St Bildeston IP7 7EA**

# BILDESTON CARPET BOWLS CLUB



**CARPET BOWLING**

At the beginning of February the club had 2 games in the first round of the Suffolk plate competition. Following a first leg loss by 9 points to 1 the return leg at home required a 10-nil win to progress to the quarter finals. Having won the first 3 games it all came down to the final bowl on the final end with Tostock holding a 2 point lead and shot bowl. Skip Gerry Taylor produced the shot of the evening turning 1 shot down into a 4 shot win and a place in the quarter final.

## **Potters bowls competition.**

Sue and Paul Cousins, won their Round Robin league in the pairs competition winning 4 and losing one. This meant they progressed as one of the last 32 pairs (out of a total of 72) to the knock out stage. They then won their next game 13-2 to go into the last 16 where we lost a close game 4-3 with time running out and not able to play the last end.



**money:course**

CAP Money is a simple, yet highly effective money management course that teaches people budgeting skills and a cash-based system that really works. This course will help anyone to get more in control of their finances, so they can save, give and prevent debt.

Bildeston Baptist Church has partnered with Christians Against Poverty to offer CAP Money courses in our community. The service we offer is completely free.

**Call Christine on 01473 828095, email [bildestonCAP@gmail.com](mailto:bildestonCAP@gmail.com) to find out more or register on the CAP website below for the course starting at 7.30pm on the 8<sup>th</sup> June and continuing on the following 2 Wednesdays (15<sup>th</sup> and 22<sup>nd</sup>)**

Visit [www.capmoney.org.uk](http://www.capmoney.org.uk) to find out more about the course and to see where courses are running in other parts of the country.



# Rediscover your world of **SOUND**

The multi-award winning Hearing Care Centre team are caring for all your hearing needs locally in:

## **Needham Market**

The Country Practice, Barking Road

## **Hadleigh**

The Health Centre, Market Place

## **Stowmarket**

StowHealth, Violet Hill Road

- Hearing tests ■
- Latest digital hearing aids ■
- Outstanding aftercare ■
- Ear wax removal ■
- Noise protection ■
- Tinnitus management ■
- Hearing aid repairs ■
- Home visits also available ■



Karen Finch RHAD FSHAA FRSA

**To book your appointment  
please call 01473 230330**

■ Award Winning ■ Family Run ■ Private ■ Independent ■ 20 Local Centres

[hearingcarecentre.co.uk](http://hearingcarecentre.co.uk)

# COUNTRYSIDE OBSERVER



The age of the coach, part 2. When travel became more popular and affordable, small market towns had their day in the sun as staging posts for the Royal Mail coach and horses, which were faster than the stage coaches, and stopped for passenger refreshment and a change of horses. This provided not only local employment but the opportunity for gossip and news from beyond isolated communities of the countryside. Places such as Saxmundham, which was on the London and Ipswich to Yarmouth turnpike road, became commercial centres for the

surrounding villages. The toll house at Kelsale-cum-Carlton, just outside Saxmundham, stands by the road that eventually became the old A12 and can still be seen at Carlton Gate. Saxmundham's Bell Hotel dates from 1824 and is thought to have been the last coaching inn built in England before the railways in the 1840s. Among the most famous descriptions of early 19th century coaching stops are those by Charles Dickens, particularly his references to the Plough Inn at Blunderston in *David Copperfield*. He was a lover of coaching inns and he mentions 60 to 70 in *Pickwick Papers* alone, many of them in Suffolk.

Tolls were nothing new. For centuries trade tolls were levied on roads and bridges associated with ancient trade routes which eventually became coach routes and then the road system we know today. Itinerants and traders were charged a fee for setting up stalls at country markets, paid at the parish boundary. An unusual remnant of this is found in the tiny hamlet of Eastbridge named the Tu Penny arched bridge which, presumably, cost two pence to use. An even older toll route is the four-arched, 15th century Packhorse Bridge at Moulton, which stood on the mediaeval trade route from Cambridge to Bury St Edmunds. A similar remnant is the Topplesfield Bridge near Hadleigh. Travellers between Hadleigh and Bury St Edmunds came up the Brett valley through Bildeston where almost certainly a stop was made for passengers to alight or embark. Water butts were available in the square for hot horses to quench their thirst. Coach travel might have been arduous but was safer than country lanes, or main highways, which were still dangerous in the late 18th and early 19th century. Among the lists of transportees from Suffolk to Australia are found several guilty of highway robbery. Samuel Raynor from Stow Upland was convicted for stopping and robbing Thomas Turner on the highway between Barham and Thetford and transported for life. In 1811, 22-year-old Charles Kent (from near Buxhall) was convicted for robbing and cruelly treating Jonathan Clift on the highway in the parish of Mildenhall and sentenced to transportation for life. Few transportees returned to Suffolk, even after serving their sentence, but one man came back to his home village of Glemsford. Convicted in 1841, William Pearman served 12 years in Tasmania, after which he made his way to the goldfields of Ballarat where he made a fortune. He returned home to Glemsford where he set up a blacksmiths and butchers shop and prospered. William died in 1897, aged 80. By then the coach age was barely a memory. One of the last mail coaches to traverse Suffolk was the London to Norwich run, via Newmarket, which was founded in 1785 and ended in 1846 by which time even Dickens travelled by train and embraced the dawn of a new railway era. **Mike Biddulph**

# COUSINS & SON BILDESTON LTD

available to carry out all your building requirements  
from  
**Renovations / Alterations / Extensions**  
to  
**General Repairs**

Please contact Paul for a free estimate  
**01449 744360 or 07876 244461**  
or email [paul.cousins268@btinternet.com](mailto:paul.cousins268@btinternet.com)

*Tired of Housework?*

## COUNTRY MAIDS

*A highly experienced home cleaning service*

Established over 24 years, COUNTRY MAIDS  
provides a service for all home cleaning from  
brass, ovens, windows, kitchens and polishing.

All materials and equipment provided.

No contracts.

For a free quote telephone:

**(01449) 741108**

  
*Purple Daisy*

*I offer a full range of both modern and traditional  
floral designs including:*

- Christmas wreaths
- Weddings
- Funeral Tributes
- Special Occasions

*I would be delighted to offer you a free consultation  
to discuss your floristry needs.*

Contact Davina on 01284 828006 / 07920 145418



FAMILY GROCER

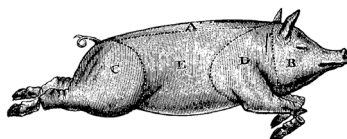
PROVISIONS

OFF LICENCE

# BANK HOUSE STORES

## and Post Office

Richard & Joan  
O'Sullivan



telephone  
01449 740403

### **Shop locally - and help keep Bildeston beautiful!**

At Bank House Stores you can buy a lottery ticket, post a parcel, get cash, pay some bills, buy fresh croissants and baguettes - and even pay the Dartford Crossing charge **-7 days a week!**

We have daily deliveries of milk and bread; eggs from Hart's of Baylham; bacon, ham and sausages from Broadland Hams and fresh bread from Sparling and Faiers of Lavenham. Getting in the car to do your shopping can cost you more than you think. Check out our special offers, available until 5<sup>th</sup> of March:

Goodfella's Stonebaked Thin Pizzas	Only £2
McCain French Fries 750g	Only £1.50
BirdsEye Cod Fish Fingers 12-Pack	Only £2
Cathedral City Mature Cheddar 200g	Only £2
McVitie's Biscuits Twin Packs	Only £1.50
Kellogg's Cheerios 375g	Only £1.14
DAZ Washing Powder 22-Wash	Only £3.50
Coca Cola/Diet Coke 6-Packs	Buy One Get One Free
Ben & Jerry's Ice Creams 500ml	Only £3
Grant's Whisky/Russian Standard Vodka	Only £13.50
Secretary Bird South African Wines	Only £4.99
Monistrol Vintage Cava	Only £5.89

.....plus many, many more, including flowers in time for Mother's Day.

**We are open from 7am to 7pm (6.30 for the Post Office - 6 o'clock on Wednesdays) Monday to Saturday and 8.00 to 12.00 every Sunday and Bank Holidays.**



# KINGS HEAD & Brewery

Nigel, Susie, Ryan and Freya look forward to welcoming you to the Bildeston Kings Head.

[www.bildestonkingshead.co.uk](http://www.bildestonkingshead.co.uk)

- Here's our **free live music** for **March**: every **Wednesday** is **Open Mic Night** from **8:30pm**; from **9pm on Saturday 26<sup>th</sup>** there's the superb **Hipidi** with Dave on Guitar and Poppy and Hannah's lovely harmonised vocals; and from **1pm on Sunday 27<sup>th</sup>** **Kevin Nightingale** will accompany your roast lunch on contemporary classical acoustic guitar.
- Our monthly **charity quiz night** is on **Thursday 31<sup>st</sup> March** at 8:30pm, please arrive by 8pm. To book a table telephone Sue or Nigel on 01449 741 434. Thanks to January's teams who raised **£102** for **Home Start**, family support in Suffolk.
- Our good value homemade food uses quality ingredients that are locally sourced where possible. We are well known for tasty beer-battered fish & chips, delicious boozy beef pie (Suffolk Red Poll beef) and our freshly prepared traditional Sunday roasts. Meals are cooked to order and available to eat-in or take-away. To reserve a table please phone **Sue or Nigel on 01449 741434**.
- We brew our own real ales on-site (tours by arrangement) with at least one other from a local independent brewer.
- Our opening times are as follows:

Wednesday	Open 6pm-12am (open mic/buskin night)
Thursday	Open 6pm-11pm (bar games night)
Friday	Open 4pm-12am (full menu & t/away 5-9pm)
Saturday	Open 12pm-12am (full menu 12-2pm & 6-9pm)
Sunday	Open 12pm-10:30pm (roast/Sunday menu 12-3pm)
Monday/Tuesday	Closed

# Bildeston Ladies Club



Our last meeting with Roger was a great evening – we learned and laughed a lot about bricks !

We ladies are now expert in telling stretchers from headers and know all about bonds – from English to Flemish, Monk and even Rat-trap ! On a serious note, Roger's talk was fascinating and very informative and we were so pleased that we had managed a good sized crowd for him.

Our next meeting is on March 3<sup>rd</sup>, when we will be making Eastertime floral arrangements.

Please bring with you the following items:

- A bunch of Spring flowers
- Greenery or twigs from your garden especially Twisted Hazel or Pussy Willow
- A container of your choice – shallow bowl, basket or tea cup
- Any items you wish to add such as Easter chicks or eggs
- Scissors
- Secateurs
- Newspaper

PLEASE don't worry if you do not have these – Angela will bring a selection of baskets and we will share bowls, twigs etc between us.

We will provide the oasis. NO-ONE will go home empty handed and perhaps you will surprise yourself! Look forward to seeing you there!



In April we will continue the Spring theme with a trip to see the lambs.

Our meetings are held in Chamberlin hall which is open from 7:30 p.m. for us to start at 8:00 p.m. on the first Thursday of each month.

Members - £2      Guests - £3

Jo Silburn 740504 - Bookings Secretary

**Shopping Day**  
in aid of  
**Cancer Research UK**  
**Wednesday 27th April 2016**  
**10.00 am - 2.00 pm**

## Chamberlin Hall, BILDESTON

Chamberlin Close, Wattisham Road, IP7 7EZ (formerly held in Lavenham)

**Lots of lovely things for ladies of all ages - Everyone welcome!**

Please join us in Bildeston to **support** Cancer Research UK

Hot Footed ladies shoes & sandals (a whole hall full!), 3 collections of ladies clothes, jewellery & fashion accessories, hats, plants & more...

Raffle prize kindly donated by The Bildeston Crown

**£3 Entrance to Cancer Research UK (£2 after 1pm)**  
Refreshments available

**Please Like and Share our Facebook page:**  
[www.facebook.com/charityshoppingday](http://www.facebook.com/charityshoppingday)

Cancer Research UK is a registered charity in England & Wales (1089464), Scotland (SC041666) & the Isle of Man (1103).



In aid of  
**CANCER  
RESEARCH  
UK**

**Let's beat cancer sooner**



# BILDESTON RANGERS FOOTBAL CLUB

As I prepare this article the ground is finally drying out and we are confident of completing all the fixtures between now and the end of the season as scheduled, there have been some postponement's and Boxford Rovers withdrew from the League last year so as you can see our season finishes on the 23<sup>rd</sup> April when the Trophy Presentation and AGM will take place at The Crown. The fixtures till then are ...

05/03/16 Barham Athletic Away

12/03/16 Stonham Aspel Home

19/03/16 No Fixture

26/03/16 Witnesham Wasps Away

02/04/16 Cedars Park Home

09/04/16 no fixture

16/04/16 Stowupland Falcons Home

23/04/16 Bartons Home followed by Trophy Presentation and AGM

Your support for the team is much appreciated and with a good run to the end of the season we are hopeful for a mid-table finish in Division 2.

Ruth FINBOW (Secretary)



## Brook Farm Studio

Bildeston's studio for painting, pottery, figurative drawing, felt making, crafts and creative embroidery

Website: [www.brookfarmstudio.co.uk](http://www.brookfarmstudio.co.uk)  
email: [brookfarmstudio@gmail.co.uk](mailto:brookfarmstudio@gmail.co.uk)  
Call Hazel 07432 138966/01473 823819

## Lent course

'The Beckoning God'

The Baptist Church,  
Bildeston  
On Thursday:  
7-00pm  
March 3rd

Time to reflect  
on the different  
ways people hear  
the voice of God.

# **LAXFIELD HOUSE NURSING HOME**

## **BRENT ELEIGH, Nr LAVENHAM, SUDBURY, SUFFOLK**

Situated in a quiet village location with beautiful gardens, offering residential and full nursing care for elderly people.

A highly trained team of nursing sisters and care staff provide excellent nursing care with kindness and compassion, ensuring privacy and dignity at all times.

**\* Long or short term respite care available \***

A warm welcome is always extended to all visitors



All rooms are well appointed with en-suite facilities.  
Nurse Call System, Passenger Lifts, Various Public Rooms

**This nursing home was established over 25 years ago by the current proprietor and family with ongoing input and management.**

**Enquiries to - Mrs J. Carne RGN, RM, (Matron)  
Mrs E. P. Knight RGN, RM, Mr N. Knight (Proprietors)**

**Telephone (01787) 247340 / 495**

**[enquiries@laxfieldhouse.co.uk](mailto:enquiries@laxfieldhouse.co.uk)  
[www.laxfieldhouse.co.uk](http://www.laxfieldhouse.co.uk)**



**Member of the Registered Nursing Home Association**

# **FRIENDS OF BILDESTON SURGERY (FOBS)**

ARE HOLDING A



## **COFFEE MORNING**

AT HITCHAM VILLAGE HALL  
ON SATURDAY 23RD APRIL 2016  
10 A.M. TO 12 NOON

ENTRY 50P INCLUDES TEA/COFFEE AND BISCUIT  
STALLS TO INCLUDE  
TOMBOLA, CAKES/PRODUCE AND DRAW

## **BILDESTON COMMUNITY CYCLING**

Why not join our monthly Saturday morning Winter Warmer series,  
and get ready for those sunny spring days – not far off now?

# **WINTER WARMER 6**

JOIN US FOR A RIDE OF ABOUT 25 MILES,  
STARTING FROM THE MARKET PLACE  
AT 9.30am, ON SATURDAY 12 MARCH.  
CAFE STOP HALFWAY. BACK ABOUT 12.30pm.

## **PUT IT IN THE DIARY NOW!**

Warm clothing recommended. The ride will be mainly on quiet lanes,  
at an acceptable speed (no-one left behind!). Regret no  
unaccompanied children under 16.

JUST TURN UP; or for more information, contact Robin Weaver 741048



# BASE GARAGE LTD

**MONDAY – FRIDAY 7.30 – 6.00**

**SATURDAY 8.00 – 12.00**

- TYRES
- EXHAUSTS
- PUNCTURES
- BATTERIES
- WHEELBALANCING
- AIR CONDITIONING
- LATEST DIAGNOSTIC EQUIPMENT
- WELDING TO MOT STANDARD
- SERVICING & ALL REPAIRS TO ALL MAKES OF CARS  
& LIGHT VANS FLEET DRIVERS WELCOME
- MOT CLASS 4, 5 & 7
- COURTESY CAR AVAILABLE
- COLLECTION & DELIVERY SERVICE 5 MILES RADIUS  
OF GREAT BRICETT
- WINTER CHECKS
- HOLIDAY CHECKS

***£10 OFF!***

***YOUR MOT WITH THIS  
ADVERT***

**LOWER FARM ROAD, GT BRICETT, IPSWICH IP7 7DR**

**01473 658987 / 01473 657704**



Well CHAPS have triumphed again this year with their usual flair for the stage at Chamberlin Hall.

The plot was, true love reigns, however much you have in your pockets! Be it beans or coin.

The topical songs were undertaken with gusto and the cast was well versed in their story lines. Prompt used sparingly the night I went.

Miss Lesley's dancers were a sight to behold and had some wonderful costumes for their episodes. Always great to see budding performers.

Dame Dolly Durden [Adrian Chinery] had some wonderful outfits too! He wears them well! Also a snazzy dresser was the Squire [Linda Underwood]. Both favourites on stage.

Jack [Debbie Bailey] was in love with the Squire's daughter Jill [Janet Mackie] Both very good performers and singers too. Billy No Mates [Colin Bartram] he with the never ending amount of hats! was also in love with Jill. He played his part superbly but didn't get the girl!

Fairy Aubergine [Lucy Lester] with the Tinkerbell green costume and lovely voice, kept the story lines going throughout with words and song .

Bessie [Emma Knock and Holly Morseman] that great acting cow, sold to the super baddie and Giant's accomplice Miss Creep [Caroline Gage] in exchange for those fast growing beans - Lots of boos and hisses for her.

When at the top of the beanstalk scene, we found another couple of favourites in Gemima [Christine Hubbard] giant's wife and The Giant [Dave Piggot] with their chef Puddle Duck [Ellen Roper].

The production team, and a special mention to Scenery artist Robin Sidgwick, again have given the show some depth and professionalism. Keep up the good work all of you. See you next year!

Oh Yes you will!

# Aaron Clarke

---

## Accountants

Professional accountancy services  
with a personal touch

Accountancy

Taxation

Bookkeeping and VAT

Management Accounts

Payroll

Company Secretarial Services

Business Start-Up's

If you are struggling with your tax return or accounts...  
contact Luke Harvey or Ian Chambers  
for a free initial consultation

### Main Office

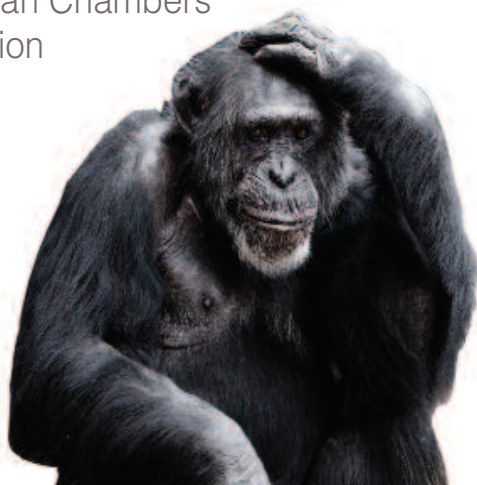
1 The Street  
Elmsett, Ipswich  
Suffolk IP7 6PA

Tel 01473 657763

Fax 01473 657764

[www.aaronclarke.co.uk](http://www.aaronclarke.co.uk)

[info@aaronclarke.co.uk](mailto:info@aaronclarke.co.uk)



# STOWMARKET STRIDERS RUNNING CLUB

## Stowmarket Half Junior Races – 20<sup>th</sup> March 2016

Open to all young runners whatever your age, if you love to run then come and join in our junior races at the Stowmarket Half Marathon on 20<sup>th</sup> March from 10.15am. There are two races and five age categories, each runner completing their race receives a lovely memento. Prizes for winning girl and boy in each age category and first, second and third place overall winners prizes too. 8 years and under run a 800m off-road course, 9 years and over run 1.5 miles in the following age categories: 9-11 years, 12-14 years, 15-16 years. Only £2 to enter on the day, there's always cake and refreshments afterwards and you can cheer on the half marathon runners as they set off! Are you our next Mo Farah or Jessica Innes? Then come and give it a go, just put on your running shoes and follow our running hares...

## Stowmarket Striders Golden Mile raises £500 for Trust Maria.

The second annual Golden Mile raised over £500 which was donated by local running club Stowmarket Striders to hospice fundraisers Trust Maria. The Golden Mile is a one mile race that sees runners take to the streets of Stowmarket in celebration of Roger Bannisters first four minute mile. 'It was really good to see our local community come together; children, families, social runners and faster runners of all ages'. comments Race Director, Tim Larke, 'It gives all those involved a huge amount of pleasure.' The race has been enormously popular, and has attracted runners from 3 to 84 years old.

Trust Maria is a local charity set up by Harvey McSloy in memory of his mother Maria, who once ran with Stowmarket Striders. They raise valuable funds to purchase essential equipment for local hospices that's not yet available to them on the NHS. 'We are currently raising money to fund the specialist training of new nurses for St Nicholas Hospice' says Harvey, 'there is a current shortage and this money will go a long way to helping them get the extra carers they desperately need.'

The third Golden Mile race will take place on Saturday 10<sup>th</sup> September 2016 ending at the recreation ground, just as the Stowmarket Beach Party festivities kick off.

Running over six sessions a week, including an active junior group, Stowmarket Striders Running Club now has over 350 members and offers a varied training programme that teaches technique and form, and features sessions specifically designed to build strength and stamina. [www.stowmarketstriders.org.uk](http://www.stowmarketstriders.org.uk)



## CPH GARDEN SERVICES

All Jobs Considered, Large & Small

Grounds Maintenance

Garden Clearance

Patios, Decking & Pathways

Fencing

Painting & Decorating

Please contact us to discuss your needs  
and obtain a no obligation quotation.

Telephone: Paul - 01449 740020

Telephone: Chris - 01787 210536

Email: [chris.harman1990@gmail.com](mailto:chris.harman1990@gmail.com)

## P.D. ROSE.

Plumbing / Heating & General Building

- Plumbing & Heating Repairs
- Complete Bathrooms & Tiling
- Int. & Ext, Decorating
- Building Maintenance

Tel. 01787 211042

Mob. 07974 290697

3. Fen Street, Boxford, CO10 5HL

# FIREWOOD

## DRY SEASONED LOGS

Various Loads Available  
Or bags at £5.50 each

Call Carol Abbott on 01473 829130  
or 07768 795981

Tree, Garden Work and Driveways also  
Undertaken





# BILDESTON HEALTH CENTRE INFORMATION

	MONDAY	TUESDAY	WEDNESDAY	THURSDAY	FRIDAY
DR HAINSWORTH					
Open surgery	8.30-10.30	8.30-10.30	8.30-10.30	NOT IN SURGERY	8.30-10.30
BY APPOINTMENT	4.00-6.00	4.00-6.00	4.00-6.00		4.00-6.00
DR CLARK					
Open Surgery	8.30-10.30	8.30-10.30	8.30-10.30	8.30-10.30	NOT IN SURGERY
BY APPOINTMENT	4.00-6.00	4.00-6.00	4.00-6.00	2.00-4.00	
DR BEALE					
Open Surgery	8.30-10.30	8.30-10.30	NOT IN SURGERY	8.30-10.30	8.30-10.30
BY APPOINTMENT	4.00-6.00	2.00-4.00		2.00-4.00	4.00-6.00
MATT BREWER ADVANCED NURSE PRACTITIONER	8.30-10.30	8.30-10.30	8.30-10.30	8.30-10.30	8.30-10.30
Open surgery	2.00-4.00	NOT IN SURGERY	2.00-4.00	4.00-6.00	4.00-6.00
BY APPOINTMENT					
PRACTICE NURSE BY APPOINTMENT ONLY	9.00-12.30 2.00-3.30 4.00-5.40	9.00-12.30 2.00-3.30 4.00-5.40	9.00-12.30 2.00-3.30 4.00-5.40	9.00-12.30 2.00-3.30 4.00-5.40	9.00-12.30 2.00-3.30 4.00-5.40
PHLEBOTOMIST	9.00-11.00	9.00-11.00	9.00-11.00	9.00-11.00	9.00-11.00
HEALTH CARE ASSISTANT	2.00-3.20 4.00-5.45	2.00-3.20 4.00-5.45	2.00-3.20 4.00-5.45	2.00-3.20 4.00-5.45	2.00-3.20 4.00-5.45

Dispensary 08.30am until 1.00pm (closed for lunch)  
2.00pm until 6.00pm  
Saturday 09.00am until 12.00pm

**SATURDAY SURGERY**  
09.00 am until 12.00pm  
**PRE BOOKED APPOINTMENTS ONLY**

PLEASE NOTE YOU WILL NOT BE ABLE TO CONTACT THE SURGERY BY  
TELEPHONE ON A SATURDAY MORNING AS THE LINE WILL BE  
TRANSFERRED TO THE OUT OF HOURS SERVICE

**SURGERY TELEPHONE NUMBER**  
**01449 740254 (24hours)**

# BARGEWELL SKIP HIRE

2 - 8 yard skips  
1 ton waste bags  
We also collect any full waste bags

Long or short term hire  
Delivery 7 days a week  
Fast & friendly service

**Stowmarket 01449 615056**

Mobile: 07770 452378

High Rd, Gt Finborough, Stowmarket, Suffolk  
[www.bargewellskiphire.com](http://www.bargewellskiphire.com)  
Credit cards accepted

## CHIMNEY SWEEP

### ECO SWEEP CHIMNEY SERVICES

NEW POWER SWEEPING METHOD USED  
FOR A MORE THOROUGH CHIMNEY CLEAN  
THAN BRUSHES.

INDUSTRIAL HEPA FILTERED VACUUM.

FULLY INSURED.

INSURANCE RECOGNIZED CERTIFICATES ISSUED.

SPOTLESS, RELIABLE AND FRIENDLY SERVICE.

ALL CHIMNEYS, WOOD BURNERS, AGA, BOILER

FLUES SWEEP.

GUILD OF MASTER SWEEPS CERTIFICATED MEMBER.



**TEL. 01359 232335**

# THE BUGLE INTERVIEW

Our final political interviewee is Andrew Guttridge, Chair of Bildeston Parish Council.

## ***What got you into local politics in the first place?***

I'm pleased to say that being a parish councillor has very little to do with politics. Unlike at County and District level, most candidates for election as parish councillors stand with no political affiliation. In my view that is as it should be. When I moved to Bildeston 25 years ago, I was pleased to have come to a thriving and balanced community, with good local facilities and employment. I wanted to play a part in the community, initially joining the Sportsfield Committee. I can't remember exactly how I then came to stand for the Parish Council, but I'm pretty sure I was given a bit of a nudge by Robin Taylor, an existing councillor. Incidentally, the Parish Council currently has two vacancies and we would be interested in hearing from anyone who is interested in being co-opted and feels they have something to offer. I'm sure current councillors won't be too offended when I say that younger members of the community are currently under-represented on the Parish Council!

## ***What is it like being the Chair of the Parish Council?***

There are essentially two parts to the role of Chair. The first is to chair the parish council meetings to make sure that all decisions are given proper consideration, with councillors both expressing their views and listening to the views of others. I also make sure that members of the public and other guests can make representations if they wish, and are heard courteously. The second, smaller, part of the role is a ceremonial one, to represent the parish council at civic events, for example the service of remembrance.

## ***In your time as a Parish Councillor, what have been the biggest changes?***

The biggest change is a relatively recent one relating to the size of housing developments currently being proposed on green field sites adjoining the village. The outcome of the planning process for these will affect our village and community forever. The Parish Council is consulted by Babergh District Council, the planning authority, but the very limited degree to which the views of the Parish Council are taken into account is a source of ongoing frustration and concern.

## ***What are the links between Parish, District and County Councils?***

Our County and District Councillors are regular attendees at our Parish Council meetings and I thank them for their commitment. However, the huge financial pressures at County and District levels are taking their toll on the services they provide. In my view, better and more efficient services could be provided if the county and district tiers of local government were combined into one (known as a unitary council). There would be less confusion about which council does what and better prospects for town and parish councils having a greater say in things which affect their communities.

## ***What are your hopes and aims for the near future of Bildeston?***

It is not realistic to think that Bildeston can or should be just frozen in time. Some growth is inevitable and desirable, but it should be appropriate. I would like to see growth in local employment opportunities go hand in hand with any housing growth. I very much hope that Bildeston will remain the living, working community which attracted me 25 years ago. We are blessed with some excellent community facilities, and I hope new generations of volunteers will come forward to keep these going and make sure they serve the needs of the community for the future.



**Green Farm**  
**Vintage China**  
**Hire**



A wide range of vintage china and glass to hire for any occasion.

carole.homer@btinternet.com  
**Tel: 01449 741498**

**Dentist**

**Paul Rolfe BDS**

Veneers & Crowns in a single visit

Dental Implants

Family Dentistry

**Lavenham & Long Melford**

**01787 882722**

[www.paulrolfedental.co.uk](http://www.paulrolfedental.co.uk)

**Now Frying At Market Square  
 Bildeston  
 Fridays 11am – 1:30pm  
 and Thursday evenings**



**The Travelling**  
**Friar**  
**Local Mobile**  
**Fish & Chip Shop**

**Functions Catered For**  
**Shows • Parties**  
**Weddings • etc.**

**Telephone**  
**01473 830771**

# Annual Village Spring – Clean 2016.



The time has come to start planning ahead for the better weather that Spring brings. As usual we will be out and about ridding our village pathways and roadsides of the litter that has built up.



For those of us who observe as we walk or cycle this rubbish is very evident – it does make one wonder, what do the litter throwers and droppers THINK is going to happen to it? Can you imagine how quickly we would be knee-deep in crisp packets and cans if we didn't take the time to clear it away. I suppose there's no point in me going on about it, as I would just be preaching to the converted !

If you are one of those who does care about our environment and the nature it holds, do come along and join us in our efforts.

As usual you can pre-book a particular area of the village that you would like to work on or just join in where needed. We hope to cover all the pavements and pathways within the Parish boundary and the roadways towards all our neighbouring villages. As you will appreciate this is a lot of work, so the more volunteers the easier it is for us.

Come along and do your bit!

Please phone us if you can, so we have an idea of numbers, or just turn up on the day.



**Saturday April 9th**  
**Meet at 10a.m. on the Market Square**  
**Bring your own gloves**  
**(bags and litter-pickers provided)**  
**Children welcome with adult supervision.**

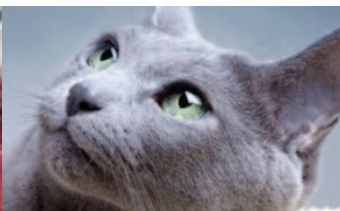


Thanks,  
Jo Silburn 740504  
Robin Sidgwick 747404





# CLAY HILL CATTERY



## EXCLUSIVELY FOR CATS

Clay Hill purpose built luxury upvc cattery was completed in October 2015. Built by the major supplier of upvc catteries to the RSPCA and Cat Protection across the UK it offers secure, hygienic, climate controlled boarding for your cat.

Run by caring, professional staff, our cattery offers a truly pampered 5-star haven for cats.

We will ensure your cat receives a stress free stay helping owners enjoy going on holiday having been reassured that their cat will receive the very best of care and attention.

- Spacious temperature controlled accommodation
- Open all year round
- Collection and drop off service available
- Ample parking spaces
- Fully Licensed by Babergh District Council

Visit our website for more information at [www.clayhillcattery.co.uk](http://www.clayhillcattery.co.uk) or our Facebook page



### Clay Hill Cattery

"Woodside", Clay Hill Lane,  
Wattisham, Suffolk IP7 7JS

[www.clayhillcattery.co.uk](http://www.clayhillcattery.co.uk)

email: [info@clayhillcattery.co.uk](mailto:info@clayhillcattery.co.uk)

**Tel: 01449 744966**

# WALL TO WALL BUILDERS (SUFFOLK) LIMITED

Experienced, Professional & Reliable

- Extensions
- New Builds
- Listed Buildings
- Loft Conversions
- Kitchens & Bathrooms
- All Renovation Work  
& Repairs

Richard Bateson

M: 07799 114814

T: 01449 741510

[richardbwtw@gmail.com](mailto:richardbwtw@gmail.com)

[www.walltowallbuilders.co.uk](http://www.walltowallbuilders.co.uk)

## Stuart Walker

**Decorating, Painting & Refurbishments**



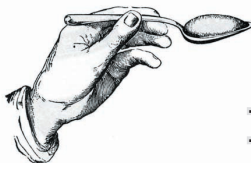
**A locally based company offering an honest and reliable service**

**Painting - Decorating - Refurbishments - Repairs**

**All work considered indoors & out! Fully Insured & free quotations provided**

Please contact Stuart on Tel: 07711 606464 or 01449 740387

Email: [stuma1@hotmail.co.uk](mailto:stuma1@hotmail.co.uk)



## *Recipe of the Month* **Baked Raspberry Custard**



---

### Ingredients

- ¼ cup butter
- ¾ cup whole milk
- 3 large eggs
- ½ cup + 1 tablespoon sugar
- ½ cup flour
- ¼ teaspoon coarse salt
- ½ teaspoon pure vanilla extract
- 2 cups raspberries

---

### Method

1. Preheat oven to 190C – fan 170C
2. Melt the butter in the oven in a 9 inch pie dish this will take approx 6 minutes
3. In a blender combine the milk, eggs, ½ cup sugar, flour, salt and vanilla. Add the melted butter and blend mixture until smooth
4. Distribute berries evenly in pie dish and pour the batter mix over the top. Sprinkle with 1 tbsp sugar and bake until slightly puffed and just set in the middle, approx 20 – 25 minutes. Heat 'brulee' gas torch and brown top of pie until deep golden brown, 2 – 3 minutes.
5. Serve Warm





# Done & Dusted Cleaning Service

*A professional, reliable business offering:*

- **Domestic Cleaning – regular cleaning or one off spring cleans.**
- **Commercial Office cleaning.**
- **Ironing service – Collected and delivered back to your door**

*Please call for a no obligation quotation:*

**Office 01449 258574/Mobile 07402 045572**



**Karma Babies**  
Infant Massage & Yoga

5 week courses in  
Stowmarket & Hadleigh areas  
1-1's or friends groups in the  
comfort of your own home

*Gift Vouchers Available*

**Call Wendy on 07867615922**

**wendy@karmababies.co.uk**

**www.karmababies.co.uk**



## Bildeston Sportsfield Pavilion



### looking for a venue?

Function room and sportsfield for parties, events, rehearsals, meetings, clubs and much more.

For more information and competitive rates please ring 01449 741563  
or e-mail [secretary@sportsfield.bildeston.org](mailto:secretary@sportsfield.bildeston.org)

# All Seasons marquees

*Let us help you to make yours an event to remember*

Modern Marquees in a range of sizes

Free no obligation site visit

Heating • Lighting • Furniture • Flooring  
Dance Floors • Staging • Linings  
Generators • Toilets

Tel Ipswich: 01473 559978

[www.allseasonsmarquees.co.uk](http://www.allseasonsmarquees.co.uk) [info@allseasonsmarquees.co.uk](mailto:info@allseasonsmarquees.co.uk)





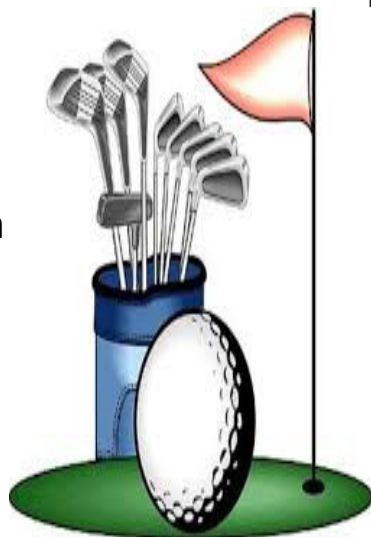
# Old Joes Golf Club

Are you looking for somewhere fun, relaxed and affordable to come and learn or practice golf?

Here at Old Joes we have some amazing facilities available to all levels of golfer whether you are just starting out to the player looking for more intensive practice.

Our facilities include

- A 10 bay floodlit driving range
- Practice putting and chipping green with two practice bunkers
- a recently installed pro shop home to Nike Golf
- A custom fitting suite with state of the art launch monitor system
- Café with hot drinks available all year
- As well as our friendly, knowledgeable staff who are able to answer almost all of your golf queries



Golf Tuition is available please ask at the pro shop or give us a call for more details

Old Joes Golf Club, Joes Road, Cornard Tye, Great Cornard, Sudbury, CO10 0QB

Tel: 01787 374807

Email: [info@patrickcollinsgolf.com](mailto:info@patrickcollinsgolf.com)

[www.oldjoesgolfingrange.co.uk](http://www.oldjoesgolfingrange.co.uk)

# BILDESTON ELECTRICAL

Rewires, Extensions, Board Changes or New Installations

Any Alterations to Existing Installations

(lights, sockets, etc.)

Contact Ian

01449 743664 or 07754 723685

- ❖ Home Maintenance
- ❖ Carpentry
- ❖ General Building Work
- ❖ Brickwork & Blockwork
- ❖ Stonework
- ❖ Hand Built Sheds
- ❖ Floor & Wall Tiling
- ❖ Paving & Patios
- ❖ Kitchens & Wardrobes
- ❖ Pergolas
- ❖ Carpentry
- ❖ Bespoke Fencing
- ❖ Property Maintenance
- ❖ Repairs
- ❖ Advice & Planning
- ❖ Shop & Office Fitting
- ❖ Renovation Work



**Bob Buckle**  
Carpentry & Building Services

**Bildeston - Suffolk.**

**For a prompt & reliable service.**



**01449 740275 or 07580 753020**  
**Email: [bobbuckle10@gmail.com](mailto:bobbuckle10@gmail.com)**

# BILDESTON PARISH COUNCIL

## DRAFT Minutes of the meeting of Bildeston Parish Council

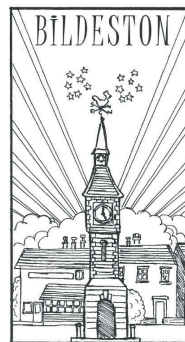
held on 8th, Febuary, 2016 in Chamberlin Hall at 7.55 pm

### In attendance:

Councillors: A Guttridge (Chairman), P Bullen D Drury  
R Lester R Taylor

**Also Present:** District Councillor M Creffield, D Blackburn (Clerk)  
N English (B Natural)

The Chairman, Councillor A Guttridge opened the meeting and welcomed everyone present.



### C155/15/16 APOLOGIES FOR ABSENCE

Apologies had been received from Councillors D Dempsey and A Hubbard and County Councillor Mrs J Antill.

### C156/15/16 DECLARATIONS OF PECUNIARY AND NON-PECUNIARY INTERESTS

Councillor Guttridge declared a non-pecuniary interest as a member of Chamberlin Hall Management Committee. Councillors Drury and Taylor declared non-pecuniary interests by reason of being members of the Sportsfield Management Committee. Councillor Lester declared a non-pecuniary interest by reason of being a member of the Sportsfield Management Committee and Kings' Pightle Management Committee.

### C157/15/16 DISPENSATIONS IN RESPECT OF PECUNIARY INTERESTS

There were none.

### C158/15/16 MINUTES OF PREVIOUS MEETING

**It was AGREED:** That the minutes of the meeting held on 11th January, 2016 be signed by the Chairman as a correct record.

### C159/15/16 POLICE REPORT

A Police report had been received and no crimes had been reported for the period 1st to 31st December 2015.

### C160/15/16 DISTRICT COUNCILLOR'S REPORT

Councillor M Creffield reported upon the following matters:

- The landlord of the Red Lion had assured him that the Bildeston Lions would be put back on the side of the building that week.
- Neighbourhood planning and emergency planning training was available from the District Council. He was asked by the Parish Council to obtain further details in respect of the latter.
- Determination of planning application B/15/01433 Land East of Artiss Close and, Rotheram Road, Bildeston had been delayed and it would be considered by the District Council's Planning Committee on 24th February, or possibly in March.

Members of the Parish Council expressed their concerns about the uncertainty over the date and the fact that the District Council did not seem to be providing up to date information on its website regarding what planning applications would be considered at each meeting.

### C161/15/16 COUNTY COUNCILLOR'S REPORT

Councillor Mrs J Antill had submitted a written report on the following matters:

- The forthcoming budget round for the County Council was expected to include the Government's adult social care levy amounting to a 2% increase in the County Council's proportion of the Council Tax.
- Changes to community transport would be introduced in June 2016. In Babergh district, the service would be delivered by Hadleigh Community Transport, subcontracting to Go Start from Sudbury.

- The gateway treatments for Bildeston had been ordered and positive feedback had been received to the improvements that were being made to pavements in the village.

### **C162/15/16 HIGHWAYS ISSUES**

The Clerk reported that a response was awaited to a letter sent to the County Council's Highways Department about various matters raised at the previous meeting.

The responses received so far regarding other issues reported by the Parish Council about the growth of vegetation close to the highway, indicated that the County Council would not take action where the vegetation was on private property.

It was noted that a portable Vehicle Activation System had been deployed by the County Council on Ipswich Road at a location which previously, the County Council had not approved site for the use of such equipment.

**It was AGREED:** That traffic calming be placed on the agenda for the next meeting.

### **C163/15/16 BNATURAL 2016**

Mr Nick English suggested that a long term view of BNatural should be taken and identified the following:

- Steps would need to be taken by the organisers to manage the costs of BNatural in order to provide a financially sustainable community event in future years. This would involve maintaining all that was good about the music festival without necessarily seeking to make it bigger every year.
- Enquiries would be welcomed into improving the electrical supply in the Market Place in liaison with the Parish Council.
- The application process and costs of a Road Closure Order and traffic management arrangements needed to be considered afresh.

Mr English indicated that he would submit a further report to the Parish Council once the accounts for the 2015 event had been finalised.

### **C164/15/16 COMMUNITY SPEEDWATCH**

The Clerk reported that a Community Speedwatch coordination meeting had been held. Representatives of Bildeston, Great Finborough and Hitcham Parish Councils, the County Community Speedwatch Team and the Police had attended. Proposals had been discussed to re-launch Community Speedwatch with new volunteers being signed up and trained. Enquiries were also being made of Lavenham and Chelsworth Parish Councils to ascertain whether or not they wished to participate.

### **C165/15/16 PLAY AREAS SAFETY INSPECTION REPORT**

The Clerk submitted the safety inspection report which had been prepared by Mr David Bracey on the Chamberlin Hall and Coronation playgrounds. The Chairman reported that he had provided a copy of the report to the Chamberlin Hall Management Committee.

Members of the Parish Council noted that there were only a few items that required repairs for safety reasons. One of the main items highlighted was the fence at Wattisham Road and this had been repaired since the inspection. The slat on the back of the bench at the Coronation Playground required replacing and re-stained and it was considered that some routine maintenance should also be undertaken in the village including re-staining the two benches on Church Lane and the bench at the cemetery should also be repaired and repainted if this was necessary.

**It was AGREED:** That the Maintenance Coordinator would be asked to action these matters.

The inspection report also highlighted the changing level of the ground at the edge of the Skate Park. It was noted that extra soil had been ordered by Councillor Hubbard on behalf of the Parish Council in 2014 to address this problem.

**It was AGREED:** That Councillor Hubbard be asked to re-examine the matter and determine whether or not a further load of soil would overcome the problem, placing an order in consultation with the Clerk if required.

### **C166/15/16 VILLAGE AMENITIES AND OPEN SPACES**

The insurance for the Kings Pightle had risen significantly since 2015 following improvements made over the past year and a grant was sought from the Parish Council to help meet the increased cost.

**It was AGREED:** That a grant of £150 be awarded to Kings Pightle Management Committee towards the costs of its annual insurance premium.

There was a discussion about the possibility of combining insurance arrangements for various amenities across the village in order to secure savings for the respective bodies.

**It was AGREED:** That the Clerk seeks advice from the Suffolk Association of Local Councils (and Community Action Suffolk) to establish the position.

Councillor Lester provided an update on the Sportsfield and it was noted that the Management Committee had worked hard to stabilise its financial position. It had been established that the hire charges were at an appropriate level but the low user base was hampering the financial performance of the amenity. It was evident that the Sportsfield was an important community asset but that it required external financial support to be sustainable.

The Sportsfield pavilion had suffered from a lack of investment over a number of years and some major projects were required. Grass cutting continued to be a major draw upon funds and prices were being obtained for the forthcoming mowing season.

**It was AGREED:**

a. That that the Parish Council supports in principle, the continuation of financial support towards the Sportsfield in respect of grass cutting and insurance, subject to further information being presented about the precise costs; and

b. That the Clerk writes to the Strategic Planning Team at Babergh District Council highlighting the Sportsfield as a potential recipient of developer contributions.

Councillor Guttridge reported that the pantomime at the Chamberlin Hall had been very successful. Overall, there had been an increase in admissions on previous years and it had been a good fundraising event for the Chamberlin Hall.

It was noted that enquires were being made into the procurement of a "What's On Noticeboard" for the Market Place.

### **C167/15/16 CLERK'S REPORT**

The Clerk reported that Mr James Cartlidge MP had written to the Parish Council seeking its support in raising a petition for further government investment in the Mast Improvement Project that would support better mobile phone communications in Suffolk.

Members of the Parish Council noted that the approval of planning application B/15/00982 for the erection of an electronic communications base station with six antennae on land south of Fen Farm, Fen Lane, Hitcham, should improve the situation in Bildeston. However, it was considered that the Parish Council and community should support all efforts to provide improved Broadband and mobile phone signals in Suffolk. Councillor Lester volunteered to place the petition in Bildeston Health Centre to start the process of obtaining signatories.

### **C168/15/16 RESPONSIBLE FINANCIAL OFFICER'S UPDATE AND AUTHORISATION OF PAYMENTS**

**It was AGREED:**

a. That the following payments be authorised:

<b>Payee</b>	<b>Description</b>	<b>Budget Category</b>	<b>Amount (incl. VAT)</b>
David Blackburn	Clerk's Pay	Salaries & Expenses	£173.09
David Blackburn	Expenses	Salaries & Expenses	£17.33



Adrian Chinery	Grounds Maintenance	Salaries & Expenses	£14.50
JRB Enterprise Ltd	Dog Bin Liners	Playgrounds & Open Spaces	£195.00
Christina Hawkins	Christmas Decorations	Community Events	£348.00
David Bracey Play Safety Inspections	Annual Playground Inspection	Playgrounds & Open Spaces	£144.00
Kings Pightle Management Committee	Grant	Community Grants	£150.00

(Note: All to be funded from General Fund with the exception of the final item which shall be funded from the John Artiss Nature and Conservation Fund).

b. That the following receipts be noted:

<b>Payee</b>	<b>Description</b>	<b>Budget Category</b>	<b>Amount (incl. VAT)</b>
W A & D G Deacon	Burial Fees	Burial Fees	£65.00
East of England Coop	Burial Fees	Burial Fees	£260.00

(Note: A further receipt of £2700 was anticipated from the Kings Pightle Management Committee which was the repayment of an advance made by the Parish Council pending the receipt of a grant by the Kings Pightle Management Committee - Minute C198/14/15 refers).

## **C169/15/16 PLANNING APPLICATIONS**

### **Planning Appendix A: Planning Applications Consultation**

<b>Reference</b>	B/15/01742
<b>Address</b>	6 High Street, Bildeston, IPSWICH, IP7 7EY
<b>Proposal</b>	Construction of vehicular access including retaining walls (part demolition of front boundary wall).
<b>Decision</b>	No objection

<b>Reference</b>	B/16/00026
<b>Address</b>	Westview, High Street, Bildeston, IPSWICH IP7 7EF
<b>Proposal</b>	Erection of 2 detached dwelling including garaging and improvement to existing access (following demolition of existing bungalow, alternative scheme to previously approved planning permission B/15/00626/FUL)

<b>Decision</b>	<p>The Parish Council reaffirms its previous comments in respect of the application in suggesting that;</p> <p>a. the applicant has not provided appropriate supporting information in respect of the land profile that are proposed in order to address the Parish Council's concerns that a two storey development may be overly obtrusive on such a prominent site, unless ground levels are reduced; and</p> <p>b. improvements are required to the design of the access such that it provides improved visibility from the drive as it joins the highway.</p> <p>Furthermore, the Parish Council suggest that at the same time as visibility to the highway is improved, the opportunity should be taken to extend the pavement so that it joins the public footpath further along the main road towards Hitcham.</p>
-----------------	--

<b>Reference</b>	B/16/00038
<b>Address</b>	158 High Street, Bildeston, IPSWICH, IP7 7EF
<b>Proposal</b>	Erection of a two storey rear extension, recladding of exterior and internal alterations.
<b>Decision</b>	No objection in principle however, the views of the Conservation Officer are sought with regard to the appropriateness of the materials proposed by the applicant as some Members of the Parish Council have concerns about the appropriateness of their use within a conservation area.

#### **C170/15/16 PUBLIC SESSION**

There were no issues raised.

#### **C171/15/16 MATTERS TO BE BROUGHT TO THE ATTENTION OF THE COUNCIL**

The Chairman, Councillor Guttridge, reported that he had been invited to be the guest interviewee for the February edition of the Bildeston Bugle on his role as Chairman of the Parish Council. It was reported that an issue had been raised by a resident about the slippery condition of the footpath down to the brook. The matter would be referred to the Rights of Way Officer.

#### **C172/15/16 CONFIDENTIAL BUSINESS**

Following the exclusion of the public in accordance with the Public Bodies (Admissions to Meetings) Act 1960, Councillor Lester reported upon legal advice being sought with regard to the funds allocated within Henry Morphey's bequest for the purpose of supporting Kings Pightle.

The meeting closed at 9.50pm.

Are you aware the law surrounding microchipping your pets is changing? Owners must ensure their dog is microchipped before this comes into force on **6 April 2016**. As part of a recent survey, results indicated that 47% of pet owners had no prior knowledge that microchipping was due to become compulsory.

# PARISH COUNCIL UPDATE

Residents will soon receive council tax bills for 2016/17 from Babergh. These will include an amount for the Parish Council precept. There will be an increase in the parish council element of approximately £2.50 for the year, for a Band D property. This is due in part to the continued reduction in grant to parish councils from the district council. The Parish Council also decided to increase the amount of money put aside for grants to local organisations, which can then often help secure grant funding from other sources for projects. Past examples include the skate park at the Coronation Playground and the bird hide at the Kings Pightle nature park. The Parish Council is also setting aside sufficient reserves to be able to repair or replace its assets (such as street lights) when needed, while remaining debt free, so none of the precept goes on interest charges.



## BILDESTON ALLOTMENTS

**Have you ever thought  
of growing your own  
vegetables and flowers?**

**There are currently vacant plots, both full size  
and half size. Water is available on site, and the  
rents are reasonable.**

**If you are interested, please contact Pauline**

**Squirrell, 01449 740720, as soon as possible.**



*Andrew Bingham*

INDEPENDENT FUNERAL SERVICE

Local Caring Independent Funeral Service

24 Hour Personal Service \* Private Chapel \* FREE Parking

[www.andrewbingham.co.uk](http://www.andrewbingham.co.uk)

01449 771666

The Nutshell, Milton Road South, Stowmarket, IP14 1EZ



**Golden Charter**  
Funeral Plans



# Lush Beauty Therapies

The Old Post Office, Hitcham. IP7 7NF

Tel; 01449 744414 or 07872856888

Offers waxing, tinting, spray tanning, microdermabrasion, gel nails, mink eyelash extensions, massage and more.....  
9am - 7.30pm weekdays & 9am - 1pm Saturdays.



## *Walnut Tree Designs*

**BESPOKE CURTAINS & BLINDS**

*Free design consultation in your own home-Complete made-to-measure service  
for all your soft furnishings requirements*

**CUSHIONS - FABRICS – TRIMS- POLES - UPHOLSTERY - PELMETS - HEADBOARDS**

*Call Terri Oxley*

**01284 828263 M:07826930011 email [walnuttreedesigns@gmail.com](mailto:walnuttreedesigns@gmail.com)**

# Stowmarket Golf Club

Lower Road, Onehouse, Stowmarket IP14 3DA

Tel: 01449 736473

[www.stowmarketgolfclub.co.uk](http://www.stowmarketgolfclub.co.uk)

## ***Even more reasons to join ...***

Young or old, male or female, golf provides a very sociable way of keeping fit. You'd be amazed how many calories are burnt by playing 18 holes!

We offer a stunning parkland 18 hole course, an Academy course and excellent practice facilities, as well as a friendly clubhouse where you will receive a warm welcome.

And now for a limited time we are offering group incentives to join. So if you and your playing partner(s) would like to join, we can tailor a package to suit you. The bigger the group, the greater the incentives!

## EASTER FLOWERS AT ST MARY MAGDALENE CHURCH



Every year we buy lilies and other special flowers to decorate the church for Easter Day. Because of the price of flowers for Easter, we have begun a special Resurrection Book where people might like to name those they have loved and lost as they donate towards the Easter Flowers. We will open this special book on Easter Day as we celebrate the resurrection at our service and leave it by the font for you to see. If you would like the name of someone you wish to be remembered in this way to be written in the book, please print their names on the list up at the church any time before Good Friday. Donations for flowers, clearly marked 'Easter Flowers', may be given to Elspeth, Rev Liz, or Teresa. Thank you.



## ***Bildeston History Quarterly Issue 18 (Spring 2016)***

Oswald Simpson, formerly of Bildeston and now of Elmsett, has kindly loaned his collection of post-cards, some of which appear as illustrations to this issue's articles. He also loaned some interesting documents and 'The canal that never was!' tells the story from one of them. In 1785, John Phillips planned the route for a canal from London to Norwich and Kings Lynn. The canal's 50-metre swathe was to pass through Bildeston, which supposedly would have given villagers a 21½-hour journey to London, as opposed to 96 hours by road.

Since 1921, the house on the north side of Wattisham Road has been called Bentons. It was built in 1851 as the Rectory and was home to four successive incumbents. Part one of 'When Bentons was Bildeston Rectory' looks at the house's builder Revd Joseph Gedge, who was here until he retired in 1879. He was responsible for building the village school in Chapel Street and for establishing Bildeston Workmen's Horticultural Society, which held its annual shows on the Rectory lawns.

Extracts from the diary of William Freeman Squirrelrell, landlord at the King's Head from 1854 until 1885, continue with the late 1850s. William noted national and local events including Lord Palmerston becoming prime minister, lead stolen from St Mary's Church roof and the murderous actions at Preston St Mary by William Green.

In Issues 12 to 17, Peter Hubbard of Bath wrote about his childhood memories of Bildeston during the 1930s. Peter (left) and his sister Catherine Green of Harleston were reunited with their cousin Ashley Hubbard of Bildeston, when they visited the Editor and recalled their family history.

Your letters, pictures and memories of Bildeston in the recent past and articles concerning the village's history are most welcome. Please contact Sue Andrews on 01449 740673.

Available from the beginning of March at Bank House Stores and Brook Farm Studio in Bildeston, Avis the Newsagent and Idler Bookshop in Hadleigh and Hollow Trees Farm Shop in Semer, price £3.





## Pilates Classes Now Held at Kersey Mill

If you want to exercise both your body and mind as well as improving your sense of well being, strength, flexibility and mobility then I truly believe pilates is for you!

I am passionate about bringing the benefits of pilates to everyone and as a fully qualified teacher certified by Europe's largest professional pilates organisation I can help you improve muscle tone and core stability, building strength from the inside out, re-balancing the body and bringing it into correct alignment.

Please contact me if you wish to join a small matwork class and allow me and the Body Control Pilates method help you achieve your goals. Pilates can benefit anyone of any age and any level of fitness. I look forward to hearing from you.

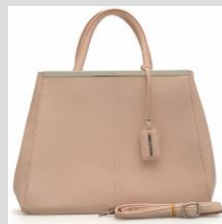
**Call 07855 394 703 for more info.**

**[www.pilatesworks4u.com](http://www.pilatesworks4u.com)**

*Jenny  
x*



# Zor Boutique at Kersey Mill



Stunning jewellery, scarves,  
bags, purses, clothing & shoes.  
All at affordable prices.

Call: 07969525859

Web: [www.zoronline.com](http://www.zoronline.com)

Email: [zoronline.sales@gmail.com](mailto:zoronline.sales@gmail.com)

Kersey Mill, Stone Street IP7 6DP  
(Near Hadleigh)



## THE FLOWER SHOP

AT KERSEY MILL



*Local and Nationwide deliveries available*



At The Flower Shop our team of florists create beautiful arrangements just for you. We use fresh seasonal flowers, purchased daily in all bouquets, baskets and arrangements.

**THE FLOWER SHOP AT KERSEY MILL, IPSWICH SUFFOLK IP7 6DP**  
**EMAIL: [SALES@THEFLOWERSHOPKM.COM](mailto:SALES@THEFLOWERSHOPKM.COM)**

**CALL 01473 805156**

**[WWW.THEFLOWERSHOPKM.COM](http://WWW.THEFLOWERSHOPKM.COM)**



Happy Easter!



D'ENZA



HAIR @ BEAUTY SALON at

"KERSEY MILL"

*"March Offers"*

1: Mother's Day ~ Elemis Skin Specific Facial 1hr treatment with a Swedish back, neck & Shoulder massage 25mins.

**Special Price of only £40.00**

2: Mother's Day~ OPI luxury manicure 45mins & a Swedish back, neck & Shoulder massage 25mins.

**Special Price of only £30.00**

3: Hair~ Wash, Cut & Style **50% off** "Only for March"

**Special Price of only £13.25**

4: Men's Haircuts only in March.

**Special Price of only £8**

**We now have available Russian eyelash extensions & Gel nail extensions**

The above offers can not be used with another offer.

Please telephone for more information or make a booking on: **01473 829069**

Email: [emmaspraggon@yahoo.ac.uk](mailto:emmaspraggon@yahoo.ac.uk) or visit us on Facebook or Twitter for our special offers.

For opening times & brochure please look at our website: [www.denzahairandbeauty.com](http://www.denzahairandbeauty.com)



## *A letter from 15 Manor Road*

Last year, at the beginning of November for All Soul's, we gave everyone who came to the special service a big 'King Alfred' daffodil bulb. They are about the biggest and brightest daffodils you can get, normally very reliable. The last few that were left over I planted in our front garden but they have failed to grow. The bulbs which look quite unbecoming in their dormant state were meant to be a reminder that new life comes out of death - new beginnings, new relationships or new opportunities. We can't appreciate that while we are in mourning, but as time passes - as winter becomes spring, then little shoots appear.

So I am a bit perturbed by no shoots appearing from my daffodils and wonder if anyone else who took one to plant has had a result. And if not then I shall be mentioning it next time I shop in Partridges, where those bulbs came from! Up at the church we are all a bit concerned that those daffodils that *have* grown will be over and done with by the time Mothering Sunday (March 6th) comes around and we may have to find an alternative for the posies we make on that day. But if you were planning on coming I promise you there will be a posy of some kind to take home. Those posies are the only flowers we have in the church during Lent - we give up having them around as a kind of 'giving up' during Lent. It provides a wonderful contrast when we go into church on Easter Day (see a note about Easter Flowers elsewhere in this magazine) and see the exuberance of Easter flowers all around the church to celebrate.

I hate the season of Lent with its feeling of restraint and austerity and I can't wait for the joy of Easter (and it's not just about chocolate I promise you!). I think it comes from the sense that we are moving ever nearer to the sadness of the Holy Week accounts of Jesus' death - the betrayal, arrest, torture and crucifixion of Jesus and I want to mentally escape that part and move quickly into candles, flowers, joy and celebration. But it's good for the soul they say - to fast. And there has to be a dying of the old (like the daffodil bulb) before we can see the shoots of new life. Jesus just had to die, otherwise we could never have a hope of that new life in our own lives. And I know I'm bad at self discipline, so I shall be putting in some practise. Roll on Easter!      *Yours, Rev Liz*

**Spring Coffee Morning** for St Mary Magdalene Church funds at my house 15 Manor Road, on 19th March from 10-12. Bring and Buy, Easter Egg raffle, crafts and cakes. All welcome!



**BILDESTON w WATTISHAM,  
WHATFIELD w SEMER, NEDGING & NAUGHTON**

**SERVICE SCHEDULE –March 2016**

<b>MARCH 2016      NB – Services in bold are Benefice Services</b>			
March 6th Lent 4 Mothering Sunday	11.00am	Mothering S'day service	Bildeston
March 13th Lent 5	11.00am	Holy Communion	Bildeston
March 20th Palm Sunday	9.30am 4pm	Holy Communion Messy Church	Bildeston Whatfield S.A.
<b>March 24th Maundy Thursday</b>	<b>7.00pm</b>	<b>Maundy Thursday meal</b>	<b>Semer Village Hall</b>
March 25th Good Friday	11.00am	Hour Before the Cross - Service followed by soup and Hot Cross Buns	Bildeston
March 27th Easter Day	11.00am	Family Service+egg hunt	Bildeston

## Baptist Church, Duke Street, Bildeston

**Jim Haley tel: 01449 740716 email: bildestonbc@gmail.com**

**Service every Sunday morning at 10:45**

**Lunch Club: at 12:30 on the first Wednesday of each month –**

All are most welcome

**Community Coffee Centre: Every Friday from 09:15 to 11:30am**

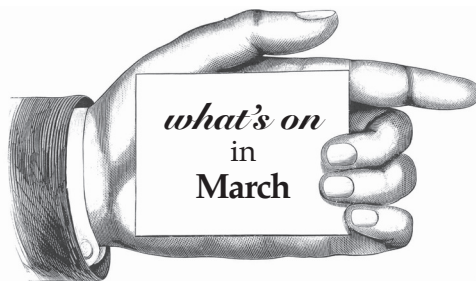
Enjoy meeting old and new friends at these events!

**‘Craft it Together’ - Every Monday at 7pm.**

Bring along your craft activities and join us for an informal, relaxed evening -  
share ideas, gain new skills or just enjoy doing your own thing.

Cost **£1.50** - drinks provided. Contact **Elaine on 01449 740716** for information

**‘Men’s Breakfast’ - last Saturday of each month at 8am**



### **Bildeston Community Coffee Centre**

Baptist Church 9:15-11:30 ..... **Every Friday**

### **Lunch club**

Baptist Church 12.15 for 12.30pm start.....**1st Wed every month**

### **Craft it Together**

01449 740716 for details.....**Every Monday**

### **Strollers & Striders**

Baptist Church Car Park 10:00 ..... **Every Monday**

### **Baby & Toddler Group**

Baptist Church 9:15-11:30 ..... **Every Tuesday**

### **Lent Course**

7.00pm Baptist Church.....**Thurs 3rd**

### **Ladies Club**

7.30pm Chamberlin Hall.....**Thurs 3rd**

### **Winter Warmer Bike Ride 6**

9.30am Market Square.....**Sat 12th**

### **Spring Coffee Morning for the Church**

10-12.00 15 Manor Road.....**Sat 19th**

### **Men's Breakfast**

Baptist Church 8:00am.....**Last Saturday of the Month**

*More details on events inside.*

Please tell us about your events in **April**

email: **editor@bildestonbugle.co.uk**



When you're finished with this Bugle please pass it on or recycle it.