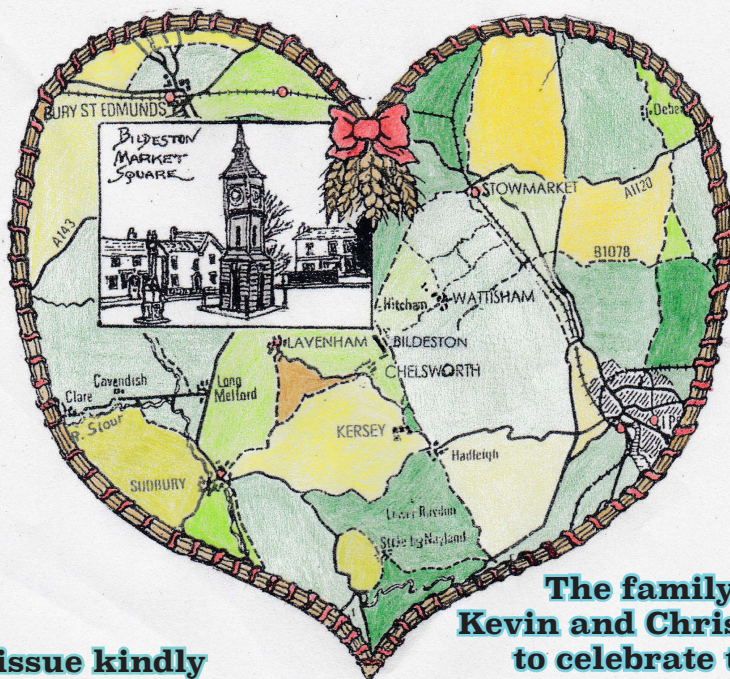


**Issue number 304**  
**February 2016**



**This issue kindly  
sponsored by -**

**The family of  
Kevin and Chris Clarke  
to celebrate their  
40th wedding anniversary  
on 14th February 2016  
Many congratulations  
to them both**



Saint Mary's Church, Bildeston, Suffolk.

**The village magazine produced for the people of Bildeston**





## BILDESTON BUGLE ADVERTISING AND FREE CONTRIBUTION INFORMATION

Our aim is to provide every resident in Bildeston with a magazine which provides information of local interest FREE OF CHARGE. To that end we are required to be efficient in the space we use to print free notices. We endeavour to include interesting items, announcements for events open to the general public for free and items of a charitable nature free of charge. Ongoing free announcements need to be reduced to minimum size or make a contribution towards printing costs. Please check with us before submitting your advert and ALWAYS provide us with all of your contact details in order for us to send a receipt.

email: [editor@bildestonbugle.co.uk](mailto:editor@bildestonbugle.co.uk)

### *Sponsor a 'Bugle' – £15 per issue*

includes a brief message of your choice on the cover of the magazine

### *Advertising Rates*

	1 issue	6 issues (15% disc)	12 issues (30% disc)	
1/4 page	£3.00	£15.00	£26.00	65mm W x 92mm H
1/2 page	£6.00	£30.00	£50.00	134mm W x 92mm H
Full page	£12.00	£60.00	£100.00	134mm W x 190mm H

#### THE SMALL PRINT

All adverts, payments and items are required by the 17<sup>th</sup> of the month for inclusion in the following month's issue (except December).

The earlier free contributions are received the greater the chance of inclusion.

Please make cheques payable to Bildeston Bugle and send to:

The Editor, Bildeston Bugle, 14 Squirrells Mill Rd, Bildeston IP7 7DY

Receipts cannot be issued without your full postal address.

If we do not receive payment by the 17<sup>th</sup> of the month your advertisement may NOT be included

### **The Bildeston Bugle Management Team is:**

Alan Jacobs (Editor) 01449 741645

Christine Hubbard (Treasurer) 6 Manor Road 01449 740633

Tricia Baldwin (Advertising Revenue)

Angie Biddulph (Bugle Team Liaison)

Stuart Law (Assistant Editor)

Alison Sims (Marketing)



# ED'S COMMENT

Do you recall the professional footballer Darren Ambrose, who started his career playing for Ipswich Town? If our age was based on how many birthdays we've had, Darren is now nearly 8! Yes, just 8. Why? Because Darren is one of the few people born on February 29th, the day that only exists once every four years, in a leap year.

2016 is a leap year so this February has 29 days, as you all probably know, especially those of us who received a new 2016 calendar for Christmas. UNICEF estimates that an average of 353,000 babies are born each day worldwide, which, therefore, includes 29th February. Presumably they celebrate their birthday on the 28th February in an ordinary year and a very special one indeed on their 'real' birthday on that one occasion every four years! By the way, Happy 8th birthday Darren!

But why is February 29th, not February 31st, a leap year day? Have you ever wondered? All the other months have either 30 or 31 days, so couldn't we have taken a day from one with 31 and evened them all up? The reason is strange and all down to the absolute power and huge ego of the Roman Emperor Caesar Augustus. Julius Caesar, who created the Julian calendar with twelve months and 365 days, originally included February with 30 days, but when Caesar Augustus became emperor he was irritated that the month named after him - August - had only 29 days, whereas the month named after his predecessor Julius - July - had 31. So, because he could, he simply stole a couple of days for August, to make it the same as July. And those two days came from poor old February!

As well as those born on the 29th, for the rest of us that extra day in a leap year is also special. It's like the clocks going back, only much, much better. Not just an extra hour, but a whole day! That's a real gift, a whole extra day, just once every four years. When the clocks go back people point out we can have an extra hour in bed. It would be a terrible shame to apply the same advice to a whole day! This year it falls on a Monday.

What will you do with your extra day? If you are working do you get an extra day's pay? Well, think about it. If you get paid monthly you get the same salary whatever the number of days in the month, 28, 30 or 31. But if you are on an annual salary you get the same even though this year has one more day! On some leap years, such as 2008, a few organisations, the National Trust for example, gave their workforce a day off to enjoy it.

Which is simply what we should all do, enjoy it! Do something different for Leap Day. Smile at everyone you meet, make someone's day, help someone, let someone help you. Play leap frog! Say Happy Leap Day when you meet friends and colleagues and see what happens. You could start a trend... or get carted off! But it's leap day, so who cares?



# Lindsey Painting & Decorating Services

Professional & reliable interior and exterior home decor. Paint, Wallpaper Coving etc. Plus other allied services, Woodwork, tiling, laminate flooring. Curtain hanging, tracks/pelmets fitted.

Terry Peters

Home 01449 741483

Mob 07809 571790

Email [tac59@talktalk.net](mailto:tac59@talktalk.net)

Friendly Experienced  
Teacher offers  
Individual

**MATHS Tuition**

Speciality  
Confidence Building

**KS1 – KS3**

Call Colin Plummer on  
01449 736918  
for details and availability  
or email:  
[colinp52@btinternet.com](mailto:colinp52@btinternet.com)

*Angel Delights*

**Outside Caterer &  
Specialised Confectioner**

Weddings – Christenings – Funerals  
Birthday Parties - Barbecues - Dinner Parties

Tradional tea room now open  
at 85 high Street Hadleigh

**CAKES FOR ALL OCCASIONS**

Contact Helen  
01473 828191  
[info@angel-delights.com](mailto:info@angel-delights.com)  
[www.angel-delights.com](http://www.angel-delights.com)



# BILDESTON PRIMARY SCHOOL

## **Pantomime**

**Oh no we didn't! Oh yes we did.....** enjoy the pantomime on the first day back after Christmas. The whole school travelled by bus to

Bury St Edmunds to see Jack & the Beanstalk at the wonderful Theatre Royal. The children shared their experience with pupils from our collaborated school, Whatfield Primary. The children have been working on literacy and numeracy topics linked to their experience when back in the classroom.



## **MP Visit**

MP James Cartlidge has been working hard behind the scenes to secure additional funding for schools in Suffolk.

He is taking a keen interest in seeing how our schools work and he visited our school on Friday 15 January.

He had a tour of the school meeting pupils, discussed ideas with our school council members and talked to staff.



## **Young Art East Anglia**

All Suffolk school-children of up to and including 11 years old (Reception to Year 6) have been invited to participate in Young Art East Anglia (YAEA), a competition and exhibition of children's art raising funds for Cancer Research UK. Our school will be participating in this event again this spring and the children are working hard on their entries. This is a wonderful opportunity for young artists who are chosen to see their work displayed in a professional gallery. The exhibition will be held at the **Peter Pears Gallery** in Aldeburgh from 11th - 13th March 2016. You can take a look at their good work on [www.youngarteastanglia.co.uk](http://www.youngarteastanglia.co.uk).

If you are considering Bildeston Primary as a school for your child, we would welcome a visit. Please phone the office on the number below. We would love to meet you.

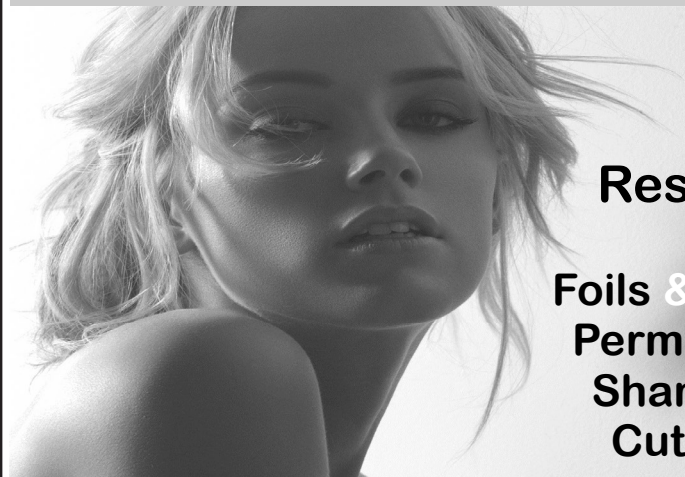
**Bildeston Primary School**  
**Newberry Road, Bildeston, Ipswich, Suffolk, IP7 7EU**  
**Telephone: 01449 740269**  
**Website: [www.bildeston.suffolk.sch.uk](http://www.bildeston.suffolk.sch.uk)**





# *Studio 66*

*Ladies and Gents Hairdressers*



**Restyling**

**Foils & Highlights  
Perms & Colours  
Shampoo & Sets  
Cut & Blow Drys**

**Friendly Service from our Professional Team  
Tue & Wed Senior Citizens**

**\*\*\*special rates \*\*\***

**Opening Times Tues - Friday 9 - 5 pm Sat - 8 - 1pm**



**Tel 01449 740644**

**52A High St Bildeston IP7 7EA**



# Aaron Clarke

---

## Accountants

Professional accountancy services  
with a personal touch

Accountancy

Taxation

Bookkeeping and VAT

Management Accounts

Payroll

Company Secretarial Services

Business Start-Up's

If you are struggling with your tax return or accounts...  
contact Luke Harvey or Ian Chambers  
for a free initial consultation

### Main Office

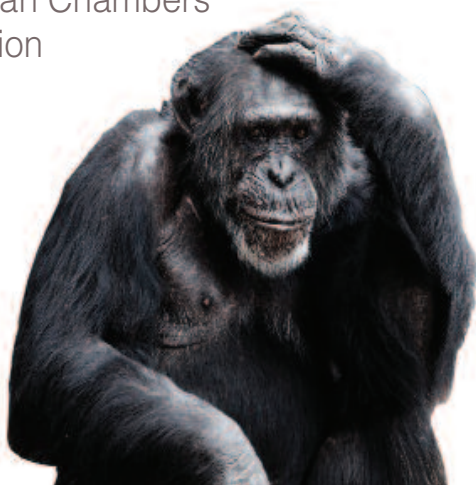
1 The Street  
Elmsett, Ipswich  
Suffolk IP7 6PA

Tel 01473 657763

Fax 01473 657764

[www.aaronclarke.co.uk](http://www.aaronclarke.co.uk)

[info@aaronclarke.co.uk](mailto:info@aaronclarke.co.uk)





# Rediscover your world of **SOUND**

The multi-award winning Hearing Care Centre team are caring for all your hearing needs locally in:

## **Needham Market**

The Country Practice, Barking Road

## **Hadleigh**

The Health Centre, Market Place

## **Stowmarket**

StowHealth, Violet Hill Road

- Hearing tests ■
- Latest digital hearing aids ■
- Outstanding aftercare ■
- Ear wax removal ■
- Noise protection ■
- Tinnitus management ■
- Hearing aid repairs ■
- Home visits also available ■



Karen Finch RHAD FSHAA FRSA

**To book your appointment  
please call 01473 230330**

■ Award Winning ■ Family Run ■ Private ■ Independent ■ 20 Local Centres

[hearingcarecentre.co.uk](http://hearingcarecentre.co.uk)



# COUNTRYSIDE OBSERVER



Dotted throughout rural Suffolk are villages containing clues that they were once important stops on the 18th century coach routes that crossed our county. These reminders of a bygone age of travel are seen in unexpected places, such as milestones along many country roads. Amazingly, over half of the original 200 still remain. Some even have the old stone markers hidden behind later cast iron ones. There are also inns named Coach and Horses or Horse and Groom, as at Melton which has one of each. The relative size of Scole Inn and the old Eye

White Lion shows how significant these establishments were in their heyday. In the 17th and 18th centuries travel was limited and uncomfortable but, before the railways opened up the countryside in the mid-19th century, coaches were the only means of public transport. The early stage coaches, so called because the journey was done in stages, offered straw-covered flooring, open sides and loose leather curtains, so that in summer travellers were choked with dust. In winter they had to struggle through mud and ruts, often up to a foot deep, and negotiate large stones and fallen trees. If stuck, passengers would be required to assist the coachman to get the coach moving. The summer service from Lincoln Inns Fields London to Ipswich, around 1750, left at 06.30 am arriving into Ipswich around 15.30 pm. Five changes of horses were required, the last being in Stratford St Mary having cleared the Le Toll Booth turnpike.

Since the cost of maintaining the roads was down to the local parishes, the surfaces were often neglected and in poor repair. With increased volumes of traffic in the 1700s came toll roads to enable parishes to get income for road maintenance. Turnpikes were later erected as a barrier to prevent evasion of payment by coach masters who sped past the toll collector without paying. The pikes were usually spikes fixed to a pole put across the road and moved aside when the toll was paid. There is a Turnpike Hill at Withersfield and another at Haverhill. This is evidenced wherever there is a Tollgate Cottage or Turnpike Lane in the vicinity. Cottages bearing the name Toll are still seen along the old coaching routes such as at Occold, Letheringham, Yaxley, Crowfield, Darsham and Braiseworth marking out villages that were once key components in the commercial arteries of 18th century Suffolk. Genuine tollhouses are unusual since most were built very close to the road edge, sometimes jutting out over the roadway itself, and were lost when road widening took place. Their round, sometimes octagonal shape, allowed the toll keeper to keep an eye on the approach roads from as many directions as possible. A unique toll house is The Mustard Pot at Needham Market which once stood beside the A140 at Brockford but was saved from demolition during a road widening scheme and removed to its present site in the 1970s. One of the best known toll houses is at Sicklesmere, a stop on the regular coach service from London via Sudbury that ran four times a day. Once known as Turnpike Gate, it was constructed in the early part of the 19th century by a Turnpike Trust, one of 14 set up across Suffolk to maintain road surfaces. Although an informal toll system had operated from around 1660 onwards, to pay for road maintenance, the first turnpike act was not passed in Suffolk until 1711. Look out for it when you're next driving into Bury. **Mike Biddulph**



# COUSINS & SON BILDESTON LTD

available to carry out all your building requirements

from

## Renovations / Alterations / Extensions

to

## General Repairs

Please contact Paul for a free estimate

**01449 744360 or 07876 244461**

or email [paul.cousins268@btinternet.com](mailto:paul.cousins268@btinternet.com)

*Tired of Housework?*

## COUNTRY MAIDS

*A highly experienced home cleaning service*

Established over 24 years, COUNTRY MAIDS provides a service for all home cleaning from brass, ovens, windows, kitchens and polishing.

All materials and equipment provided.

No contracts.

For a free quote telephone:

**(01449) 741108**

## WANTED

Bricett Business wants gardener to cut 400 metres of thorn dwarf hedge 3/4 times a year, strim verges on a pond and business park entrance ditches embankments, and cut verges the grass with our ride on mower optional, we could that ourselves, all tools supplied. We also need to cut and tops out of Leylandi trees about 200 metres long and 16 ft high.

**Call John Cooper on  
07733 321 197**



FAMILY GROCER

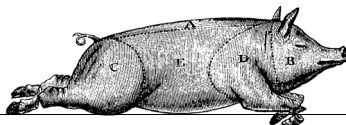
PROVISIONS

OFF LICENCE

# BANK HOUSE STORES

## and Post Office

Richard & Joan  
O'Sullivan



telephone  
01449 740403

**Shop locally - and help keep Bideston beautiful!**

At Bank House Stores you can buy a lottery ticket, post a parcel, get cash, pay some bills, buy fresh croissants and baguettes - **and even pay the Dartford Crossing charge - 7 days a week!**

We have daily deliveries of milk and bread; eggs from Hart's of Baylham; bacon, ham and sausages from Broadland Hams and fresh bread from Sparling and Faiers of Lavenham. Getting in the car to do your shopping can cost you more than you think. In addition to our regular promotional offers, we now stock a range of Euro Shopper budget lines from Bookers:

Instant Coffee Granules	100g	Only £1.19
Chocolate Chip Cookies	150g	Only 59p
Baked Beans	410g	Only 35p
Chopped Tomatoes	410g	Only 40p
Tomato Ketchup	470g	Only 69p
Orange Juice	1 litre	Only 85p
Jaffa Cakes	24-pack	Only £1
Kitchen Towels	Twin Pack	Only £1.19
Toilet Rolls	4-pack	Only 79p
.....plus many more.		

**We are open from 7am to 7pm (6.30 for the Post Office - 6 o'clock on Wednesdays) Monday to Saturday and 8.00 to 12.00 every Sunday and Bank Holidays.**

**Shop Locally - you need a jolly good reason not to!**





# KINGS HEAD & Brewery

Nigel, Susie, Ryan and Freya look forward to welcoming you to the Bildeston Kings Head.

[www.bildestonkingshead.co.uk](http://www.bildestonkingshead.co.uk)

- Here's our **free live music** for **February**: every **Wednesday** is **Open Mic Night** from **8:30pm**; from **9pm on Saturday 27<sup>th</sup>** **Luke Thorely** will be playing a mix of pop/indie tunes with his distinctive, hauntingly soulful voice; and from **1pm on Sunday 28<sup>th</sup>** **Kevin Nightingale** will accompany your roast lunch on contemporary classical acoustic guitar.
- Our monthly **charity quiz night** is on **Thursday 25<sup>th</sup> February** at 8:30pm, please arrive by 8pm. To book a table telephone Sue or Nigel on 01449 741 434. Thanks to August's teams who raised **£150** for **The Salvation Army**.
- Our good value homemade food uses quality ingredients that are locally sourced where possible. We are well known for tasty beer-battered fish & chips, delicious boozy beef pie (Suffolk Red Poll beef) and our freshly prepared traditional Sunday roasts. Meals are cooked to order and available to eat-in or take-away. To reserve a table please phone **Sue or Nigel on 01449 741434**.
- We brew our own real ales on-site (tours by arrangement) with at least one other from a local independent brewer.
- Our opening times are as follows:

Wednesday	Open 6pm-12am (open mic/buskin night)
Thursday	Open 6pm-11pm (bar games night)
Friday	Open 4pm-12am (full menu & t/away 5-9pm)
Saturday	Open 12pm-12am (full menu 12-2pm & 6-9pm)
Sunday	Open 12pm-10:30pm (roast/Sunday menu 12-3pm)
Monday/Tuesday	Closed



# Community Buying at CAS Ltd



**Want to save money on the  
cost of your heating oil?  
So do we!**

**Join our new community-based  
countywide oil buying syndicate  
and see how easy it is**

**Community Buying at CAS Ltd**

**Tel: 01473 345400**

**Email: [oil@communitybuying.org.uk](mailto:oil@communitybuying.org.uk)  
[www.communitybuying.org.uk](http://www.communitybuying.org.uk)**



Community Buying at CAS Ltd, reg. no. 04794467, is a subsidiary of Community Action Suffolk, a charity working to strengthen and champion communities across the County.

Registered office: Brightspace, 160 Hadleigh Road, Ipswich, Suffolk IP2 0HH  
Community Action Suffolk Registered Office as above. Registered Charity Number:  
1150501.

A company limited by guarantee and registered in England. Number 08316345



Would you still like to join Upbeat Contemporary Choir Bildeston? Do you love to sing?

We had a very successful and encouraging evening together at Bildeston Primary School, talking about the new community choir and how it might work. Around 20 men and women have already enrolled and intend to be there when it begins properly on Monday February 22nd 2016 at Bildeston Primary School from 7.00-9.00pm.

In just 20 minutes Andrea taught us a song, we sang it in parts and it was exhilarating - not just to sing an upbeat song like that but to hear everyone else singing too. It is a choir for anyone in the community who wants to sing, whether you can read music or not, old and young, men, women and teenagers. If you would still like to join and were not able to come to the recent session, just ring Andrea on 01449 740601 or e-mail [a.king00@btinternet.com](mailto:a.king00@btinternet.com) for enrolment details.

**STOP PRESS:** Just heard we have been offered a grant to buy a Yamaha electric piano so that the choir can perform anywhere!

Workshops in February

# Brook Farm Studio

Website: [www.brookfarmstudio.co.uk](http://www.brookfarmstudio.co.uk)  
email: [brookfarmstudio@gmail.co.uk](mailto:brookfarmstudio@gmail.co.uk)

Saturday 6th Feb Painting for all

10am - 1pm £10

Saturday 13th Feb Creative Embroidery

10am - 1.30pm £22.50

Saturday 20th Feb Figurative Drawing

10am - 1pm £10

Saturday 20th Feb Pottery

2am - 4.30pm £20

## Regular Weekly Classes

Wednesdays Craft Club 10-12.30pm £6

Thursdays Felting Making 10-12.30pm £8

Painting Tuesday and Friday 10-12.30pm £8

Booking essential call Hazel on 07432 138966 or 01473 823819



# **LAXFIELD HOUSE NURSING HOME**

## **BRENT ELEIGH, Nr LAVENHAM, SUDBURY, SUFFOLK**

Situated in a quiet village location with beautiful gardens, offering residential and full nursing care for elderly people.

A highly trained team of nursing sisters and care staff provide excellent nursing care with kindness and compassion, ensuring privacy and dignity at all times.

**\* Long or short term respite care available \***

A warm welcome is always extended to all visitors



All rooms are well appointed with en-suite facilities.  
Nurse Call System, Passenger Lifts, Various Public Rooms

**This nursing home was established over 25 years ago by the current proprietor and family with ongoing input and management.**

**Enquiries to - Mrs J. Carne RGN, RM, (Matron)  
Mrs E. P. Knight RGN, RM, Mr N. Knight (Proprietors)**

**Telephone (01787) 247340 / 495**

**[enquiries@laxfieldhouse.co.uk](mailto:enquiries@laxfieldhouse.co.uk)  
[www.laxfieldhouse.co.uk](http://www.laxfieldhouse.co.uk)**



**Member of the Registered Nursing Home Association**



# BILDESTON CARPET BOWLS CLUB

The club started 2016 with the introduction of a member's pair's competition. Sixteen players took part playing 4 bowls over 7 ends

The final was contested between Sue Cousins & Martin Wheal and Trevor Sharp and Keith Sillett. With sue and Martin the eventual winners. The club is at the halfway stage of the winter league with 5 home and 2 away games to play.

At the beginning of February the club has 2 games in the first round of the Suffolk plate competition.

The club entered 2 teams for the Suffolk charity fours in aid of the Clik Sergeant children's cancer charity. The day was a great success with 45 teams from 5 counties competing in 9 groups. The club players did not come away with any trophies but enjoyed a great days bowling.

The club plays its home games on a Tuesday evening and visitors are welcome to come and watch and have a cup of tea.

Anybody interested in trying the game would be welcome on a practice evening.

Contact Paul on 01449744360 or David on 01449740479. For more details.







# THE BILDESTON CROWN

HOTEL | RESTAURANT | BAR

## Pie Night



Monday 8<sup>th</sup> February 2016

**Only £15 pp (includes a glass of wine or point of guest ale  
on arrival)**

**From 7.30 pm onwards**

**To help with the cold nights drawing in, Chris & Hayley would like you to  
join them for a village “Pie Night”.**

**A selection of pies will be served along with a range of seasonal vegetables  
and of course lashings of gravy!**

**Book early to avoid missing out.**

**Keep reading the Bildeston Bugle for future village nights at**

**The Bildeston Crown.**

**Telephone to book: 01449 740510**

**Email to book: [reception@thebildestoncrown.co.uk](mailto:reception@thebildestoncrown.co.uk)**





## Pilates Classes Now Held at Kersey Mill

If you want to exercise both your body and mind as well as improving your sense of well being, strength, flexibility and mobility then I truly believe pilates is for you!

I am passionate about bringing the benefits of pilates to everyone and as a fully qualified teacher certified by Europe's largest professional pilates organisation I can help you improve muscle tone and core stability, building strength from the inside out, re-balancing the body and bringing it into correct alignment.

Please contact me if you wish to join a small matwork class and allow me and the Body Control Pilates method help you achieve your goals. Pilates can benefit anyone of any age and any level of fitness. I look forward to hearing from you.

**Call 07855 394 703 for more info.**

**[www.pilatesworks4u.com](http://www.pilatesworks4u.com)**

*Jenny  
x*



Body Control Pilates is a registered  
trademark used under licence

Pilates Works 4U, The Studio, The Old Guildhall, Church Lane, Hitcham, IP7 7NN  
[www.pilatesworks4u.com](http://www.pilatesworks4u.com) [pilatesworks4u@gmail.com](mailto:pilatesworks4u@gmail.com) 07855 394 703



# Purple Daisy

I offer a full range of both modern and traditional floral designs including:

- Christmas wreaths
- Weddings
- Funeral Tributes
- Special Occasions

I would be delighted to offer you a free consultation to discuss your floristry needs.

Contact Davina on 01284 828006 / 07920 145418

## Bildeston Sportsfield Pavilion



### looking for a venue?

Function room and sportsfield for parties, events, rehearsals, meetings, clubs and much more.

For more information and competitive rates please ring 01449 741563 or e-mail [secretary@sportsfield.bildeston.org](mailto:secretary@sportsfield.bildeston.org)

## Now Frying At Market Square Bildeston

**Fridays 11am – 1:30pm  
and Thursday evenings**



**Local Mobile  
Fish & Chip Shop**

**Functions Catered For  
Shows • Parties  
Weddings • etc.**

**Telephone  
01473 830771**



# HONEY BEE'S NURSERY

Hitcham Village Hall, Hitcham, IP7 7NE

## FOR CHILDREN AGED 2 – 5 YEARS

Open Mon, Wed, Fri 9.15a.m. – 12.15p.m. or 3.15p.m.

Tues, Thurs 9.15a.m. – 12.15p.m.

Early Drop Off – 8.30a.m. Lunch Club Daily until 1.15p.m.

Fee's @ 2.50 per hour (3 hour session = £7.50)

## 2 Indoor Rooms and Outdoor Areas

Ofsted Registered

Early Years Funding accepted for all 3 & 4 year olds

2 year old funding may also be available

*Free Taster Session Available*

Contact: Sharon Scarfe 01449 740764 (hall) 01449 740581 (home)

## Dentist

Paul Rolfe BDS

Veneers & Crowns in a  
single visit

Dental Implants

Family Dentistry

**Lavenham &  
Long Melford**

**01787 882722**

[www.paulrolfedental.co.uk](http://www.paulrolfedental.co.uk)



**Green Farm  
Vintage China  
Hire**



A wide range of vintage china  
and glass to hire for any occasion.

[carole.homer@btinternet.com](mailto:carole.homer@btinternet.com)  
**Tel: 01449 741498**



## CPH GARDEN SERVICES

All Jobs Considered, Large & Small

Grounds Maintenance

Garden Clearance

Patios, Decking & Pathways

Fencing

Painting & Decorating

Please contact us to discuss your needs  
and obtain a no obligation quotation.

Telephone: Paul - 01449 740020

Telephone: Chris - 01787 210536

Email: [chris.harman1990@gmail.com](mailto:chris.harman1990@gmail.com)

## P.D. ROSE.

Plumbing / Heating & General Building

- Plumbing & Heating Repairs
- Complete Bathrooms & Tiling
- Int. & Ext, Decorating
- Building Maintenance

Tel. 01787 211042

Mob. 07974 290697

3. Fen Street, Boxford, CO10 5HL

# FIREWOOD

## DRY SEASONED LOGS

Various Loads Available  
Or bags at £5.50 each

Call Carol Abbott on 01473 829130  
or 07768 795981

Tree, Garden Work and Driveways also  
Undertaken





# BASE GARAGE LTD

**MONDAY – FRIDAY 7.30 – 6.00**

**SATURDAY 8.00 – 12.00**

- TYRES
- EXHAUSTS
- PUNCTURES
- BATTERIES
- WHEELBALANCING
- AIR CONDITIONING
- LATEST DIAGNOSTIC EQUIPMENT
- WELDING TO MOT STANDARD
- SERVICING & ALL REPAIRS TO ALL MAKES OF CARS  
& LIGHT VANS FLEET DRIVERS WELCOME
- MOT CLASS 4, 5 & 7
- COURTESY CAR AVAILABLE
- COLLECTION & DELIVERY SERVICE 5 MILES RADIUS  
OF GREAT BRICETT
- WINTER CHECKS
- HOLIDAY CHECKS

***£10 OFF!***

***YOUR MOT WITH THIS  
ADVERT***

**LOWER FARM ROAD, GT BRICETT, IPSWICH IP7 7DR**

**01473 658987 / 01473 657704**



# BARGEWELL SKIP HIRE

2 - 8 yard skips  
1 ton waste bags  
We also collect any full waste bags

Long or short term hire  
Delivery 7 days a week  
Fast & friendly service

**Stowmarket 01449 615056**

Mobile: 07770 452378

High Rd, Gt Finborough, Stowmarket, Suffolk  
[www.bargewellskiphire.com](http://www.bargewellskiphire.com)  
Credit cards accepted

## CHIMNEY SWEEP

### ECO SWEEP CHIMNEY SERVICES

NEW POWER SWEEPING METHOD USED  
FOR A MORE THOROUGH CHIMNEY CLEAN  
THAN BRUSHES.

INDUSTRIAL HEPA FILTERED VACUUM.

FULLY INSURED.

INSURANCE RECOGNIZED CERTIFICATES ISSUED.

SPOTLESS, RELIABLE AND FRIENDLY SERVICE.

ALL CHIMNEYS, WOOD BURNERS, AGA, BOILER

FLUES SWEEP.

GUILD OF MASTER SWEEPS CERTIFICATED MEMBER.



**TEL. 01359 232335**



# THE BUGLE INTERVIEW

Continuing our theme of interviewing our local Councillors, we are pleased and grateful to our District Councillor Mike Creffield for this month's piece..

***What have been the high and low points of your year as our District Councillor,***

The first period in 2015 since I was elected has been very interesting. I have met a lot of new people and sat through a lot of meetings. I was selected to be a member of the planning committee. The meetings are held at least twice a month and sometimes we have site visits to familiarize ourselves with potential planning issues, so there is quite a lot of work involved, including reading pages of documents about the intended planning. The high point of the year was definitely a trip to the House of Commons organised by our new MP James Cartlidge, who I have got to know through endless hours canvassing before the elections. There have not really been any low points and I am enjoying the challenge of the work.

***What for you are the differences and similarities between the local villages?***

In Brett Vale I have 4 parishes to look after, 3 Hinterland and the core parish in Bildeston. The differences between them are ones of scale with the numbers of population. Wattisham village with only 88 people on the electoral register causes me very few problems other than the difficulty of finding my way to the church where they hold the meetings. Thankfully that difficulty will be a thing of the past as a new footpath has finally been agreed to access the church. Hitcham has 571 people on the register and the problems are mostly to do with neighbour issues. Brettenham has only 200 people and their meetings are always very friendly and sociable. Bildeston has 822 people on the register and the issues are mostly to do with housing development.

***How do you feel about the planning issues being experienced in Bildeston?***

I am trying to support the views of the people in Bildeston, and I broadly agree with the ideas of trying to keep Bildeston beautiful. I have been to meetings held by the Parish Council and also by other groups. I agree that planning policies and Neighbourhood local plans must be based on empirical evidence of housing needs. I have yet to see an official document concerning the local needs for houses, and for new buildings. Brown Field sites where available should be used before Green Field sites.

***How would you describe a 'normal' week for a District Councillor?***

I cannot say that any week is normal and I take each week as it comes. The problems and help required by the people I represent are always different but hopefully a common sense solution can always be found.

***What would you like your legacy to be as a District Councillor?***

I would like to think that people I meet at events and meetings recognise the fact that I am here to help in whatever capacity by using my connections to all the services offered by Babergh council.

***What message for the New Year do you have for the residents of Bildeston?***

I hope that the New Year brings a satisfactory conclusion to the issues about to be debated over planning and that everybody has a happy and prosperous New Year for 2016.





**C.H.A.P.S**

*Presents*

**A PANTOMIME FOR ALL THE FAMILY**

# **JACK AND THE BEANSTALK**

at  
**Chamberlin Hall, Bildeston**

on

**Gala Night Friday 29<sup>th</sup> January at 7.30pm**

**£5 Adults/£3 Children**

**Saturday 30<sup>th</sup> January at 7.30pm**

**Sunday 31<sup>st</sup> January Matinee at 2pm**

**Friday 5<sup>th</sup> February at 7.30pm**

**Saturday 6<sup>th</sup> February Matinee at 2pm**

**£7 Adults/£5 Children**

**and**

**Saturday 6<sup>th</sup> February at 7.30pm**

**£12 Adults/£8 Children including food**

**Tickets on Sale from 6<sup>th</sup> January**

**Box Office (01449)740995**



An

Chamberlin Hall  
Bildeston

20th  
FEB

7-10.30pm

# Evening of Entertainment

Live Music - Singers - Drama  
Comedy & Magic

**STARRING**

---

## THE ACCIDENTALS

FIVE PIECE VOCAL GROUP

EMMA RICHBELL - EMMA HEWETT - JULIE FRANKLIN - JULIE ROUT - SADIE BELSEY

---

## FLAT BROKE

LIVE FOUR PIECE BAND

DAVID BUTCHER KEYBOARDS GARRY TYRRELL BASS PETE DUNCOMBE DRUMS JON HALDEN GUITAR

---

MAGIC

AWARD WINNING

## PAUL PLEASANCE

MAGIC

---

## THE ACTORS

FOR ONE NIGHT ONLY

MARK SCANLON - ESME STANWAY - CATH DREW - NICK ELLIOTT

---

A Vintage Entertainments (Lavenham) Production  
IN AID OF St. Nicholas Hospice Care

**Tickets £12.50**

Price includes interval Finger Buffet served to your table.

BAR  
OPEN  
RAFFLE  
COFFEE  
TEA

together  
we can help

**St Nicholas  
Hospice Care**

A Registered Charity No. 287773

Ticket are available from:-  
Sparling & Fairers Bakery, Market Square, Lavenham.  
or The Cabinet Makers House, 42 High Street, Lavenham.

or Online [www.vintageentertainments.com](http://www.vintageentertainments.com)

Tel: 01787 248304 or mobile 07519139888  
email: [lavenham@outlook.com](mailto:lavenham@outlook.com)







# CLAY HILL CATTERY



## EXCLUSIVELY FOR CATS

Clay Hill purpose built luxury upvc cattery was completed in October 2015. Built by the major supplier of upvc catteries to the RSPCA and Cat Protection across the UK it offers secure, hygienic, climate controlled boarding for your cat.

Run by caring, professional staff, our cattery offers a truly pampered 5-star haven for cats.

We will ensure your cat receives a stress free stay helping owners enjoy going on holiday having been reassured that their cat will receive the very best of care and attention.

- Spacious temperature controlled accommodation
- Open all year round
- Collection and drop off service available
- Ample parking spaces
- Fully Licensed by Babergh District Council

Visit our website for more information at [www.clayhillcattery.co.uk](http://www.clayhillcattery.co.uk) or our Facebook page



### Clay Hill Cattery

"Woodside", Clay Hill Lane,  
Wattisham, Suffolk IP7 7JS

[www.clayhillcattery.co.uk](http://www.clayhillcattery.co.uk)

email: [info@clayhillcattery.co.uk](mailto:info@clayhillcattery.co.uk)

**Tel: 01449 744966**



# WALL TO WALL BUILDERS (SUFFOLK) LIMITED

Experienced, Professional & Reliable

- Extensions
- New Builds
- Listed Buildings
- Loft Conversions
- Kitchens & Bathrooms
- All Renovation Work  
& Repairs

Richard Bateson

M: 07799 114814

T: 01449 741510

[richardbwtw@gmail.com](mailto:richardbwtw@gmail.com)

[www.walltowallbuilders.co.uk](http://www.walltowallbuilders.co.uk)

## Stuart Walker

**Decorating, Painting & Refurbishments**



**A locally based company offering an honest and reliable service**

**Painting - Decorating - Refurbishments - Repairs**

**All work considered indoors & out! Fully Insured & free quotations provided**

Please contact Stuart on Tel: 07711 606464 or 01449 740387

Email: [stuma1@hotmail.co.uk](mailto:stuma1@hotmail.co.uk)





## *Recipe of the Month*



# **Baked Fish with Vegetables en Papillote**

### Ingredients

- Rapeseed or sunflower oil, for brushing
- 1 orange pepper, deseeded and cut into strips
- 8 spring onions, cut into short lengths
- 12 cherry tomatoes, halved
- 4 thick sustainable firm white fish fillets (skinless), each about 140–165g
- Freshly ground black pepper, to taste
- 4 tsp soy sauce (or make this gluten-free by using a wheat-free, tamari soy sauce)
- 1 tsp rice wine (or dry sherry)
- 1 small fresh red chilli, deseeded and finely chopped
- 1 clove garlic, finely chopped
- 1cm piece fresh root ginger, peeled and grated

### Method

1. Preheat oven to 200°C/180°C fan/gas mark 6. Brush four pieces of foil with rapeseed oil; arrange some pepper slices, spring onions and cherry tomatoes on each piece of foil, dividing evenly. Season fish fillets with black pepper; place one fish fillet on top of each portion of vegetables.
2. Combine soy sauce, rice wine, chilli, garlic and ginger in a small bowl; drizzle a little of this mixture over each fish fillet. Bring up sides of each piece of foil and scrunch them together tightly to make four sealed parcels.
3. Place foil parcels on a baking tray; bake in oven for about 20 minutes or until fish is cooked. Carefully open up parcels (you can let your guests do this if you like) and sprinkle with coriander. Serve the steaming parcels with crushed boiled new potatoes (or mashed potatoes) and cooked green vegetables such as broccoli or green beans.
4. Serves: 4 Prep time: 20 minutes, Cooking time: 20 minutes







# Done & Dusted Cleaning Service

*A professional, reliable business offering:*

- **Domestic Cleaning – regular cleaning or one off spring cleans.**
- **Commercial Office cleaning.**
- **Ironing service – Collected and delivered back to your door**

*Please call for a no obligation quotation:*

**Office 01449 258574/Mobile 07402 045572**

## **BILDESTON COMMUNITY CYCLING**

Why not join our monthly Saturday morning Winter Warmer series?

# **WINTER WARMER 5**

JOIN US FOR A RIDE OF ABOUT 25 MILES, STARTING FROM THE MARKET PLACE AT 9.30am, ON SATURDAY 6th FEBRUARY.

CAFE STOP HALFWAY. BACK ABOUT 12.30pm.

## **PUT IT IN THE DIARY NOW!**

Warm clothing recommended. The ride will be mainly on quiet lanes, at an acceptable speed (no-one left behind!). Regret no unaccompanied children under 16.

JUST TURN UP; or for more information, contact Robin Weaver 741048



# All Seasons marquees

*Let us help you to make yours an event to remember*

Modern Marquees in a range of sizes

Free no obligation site visit

Heating • Lighting • Furniture • Flooring  
Dance Floors • Staging • Linings  
Generators • Toilets

Tel Ipswich: 01473 559978

[www.allseasonsmarquees.co.uk](http://www.allseasonsmarquees.co.uk) [info@allseasonsmarquees.co.uk](mailto:info@allseasonsmarquees.co.uk)





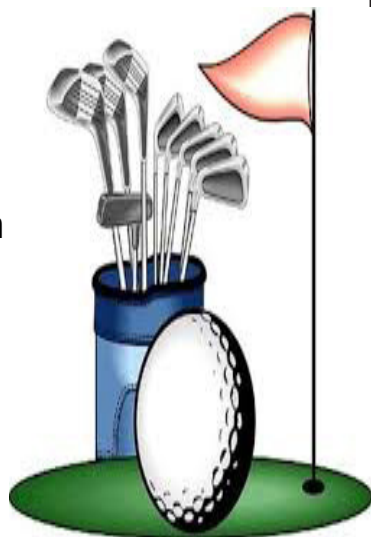
# Old Joes Golf Club

Are you looking for somewhere fun, relaxed and affordable to come and learn or practice golf?

Here at Old Joes we have some amazing facilities available to all levels of golfer whether you are just starting out to the player looking for more intensive practice.

Our facilities include

- A 10 bay floodlit driving range
- Practice putting and chipping green with two practice bunkers
- a recently installed pro shop home to Nike Golf
- A custom fitting suite with state of the art launch monitor system
- Café with hot drinks available all year
- As well as our friendly, knowledgeable staff who are able to answer almost all of your golf queries



Golf Tuition is available please ask at the pro shop or give us a call for more details

Old Joes Golf Club, Joes Road, Cornard Tye, Great Cornard, Sudbury, CO10 0QB

Tel: 01787 374807

Email: [info@patrickcollinsgolf.com](mailto:info@patrickcollinsgolf.com)

[www.oldjoesgolfingrange.co.uk](http://www.oldjoesgolfingrange.co.uk)



# BILDESTON ELECTRICAL

Rewires, Extensions, Board Changes or New Installations

Any Alterations to Existing Installations

(lights, sockets, etc.)

Contact Ian

01449 743664 or 07754 723685

- ❖ Home Maintenance
- ❖ Carpentry
- ❖ General Building Work
- ❖ Brickwork & Blockwork
- ❖ Stonework
- ❖ Hand Built Sheds
- ❖ Floor & Wall Tiling
- ❖ Paving & Patios
- ❖ Kitchens & Wardrobes
- ❖ Pergolas
- ❖ Carpentry
- ❖ Bespoke Fencing
- ❖ Property Maintenance
- ❖ Repairs
- ❖ Advice & Planning
- ❖ Shop & Office Fitting
- ❖ Renovation Work



**Bob Buckle**  
Carpentry & Building Services

**Bildeston - Suffolk.**

**For a prompt & reliable service.**



**01449 740275 or 07580 753020**  
**Email: [bobbuckle10@gmail.com](mailto:bobbuckle10@gmail.com)**



# BILDESTON PARISH COUNCIL

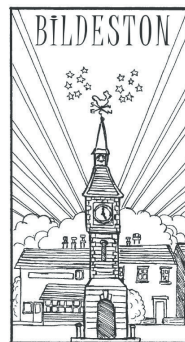
## DRAFT Minutes of the meeting of Bildeston Parish Council

held on 11th, January, 2016 in Chamberlin Hall at 7.55 pm

### In attendance:

Councillors: A Guttridge (Chairman), D Dempsey D Drury A Hubbard  
R Lester R Taylor

**Also Present:** District Councillor M Creffield, D Blackburn (Clerk)  
Mr L Hines (Minute No. C144/15/16 refers)



The Chairman, Councillor A Guttridge opened the meeting and welcomed everyone present.

### C139/15/16 APOLOGIES FOR ABSENCE

Apologies had been received from Councillor P Bullen and County Councillor Mrs J Antill.

### C140/15/16 DECLARATIONS OF PECUNIARY AND NON-PECUNIARY INTERESTS

Councillor Guttridge declared a non-pecuniary interest as a member of Chamberlin Hall Management Committee. Councillors Drury and Taylor declared non-pecuniary interests by reason of being members of the Sportsfield Management Committee. Councillor Lester declared a non-pecuniary interest by reason of being a member of the Sportsfield Management Committee, Kings' Pightle Management Committee and the Parochial Church Council.

### C141/15/16 DISPENSATIONS IN RESPECT OF PECUNIARY INTEREST

There were none.

### C142/15/16 MINUTES OF PREVIOUS MEETING

**It was AGREED:** That the minutes of the meeting held on 14th December, 2015 be signed by the Chairman as a correct record.

### C143/15/16 POLICE REPORT

There was no Police report on this occasion although Parish Councillors identified that there had been a number of break-ins to parked vehicles on Newberry Road and Manor Road. The Clerk would enquire why a Police report had not been received.

### C144/15/16 MONKS ELEIGH COMMUNITY EDUCATION CENTRE

Mr Hines gave a presentation on proposals to create a Community Education Centre in the former primary school building at Monks Eleigh. Following a survey of villagers and a public meeting, public support had been established for an education and business centre using the existing building and part of the outside space for car parking.

Members of the Parish Council asked questions about the sustainability of a new public amenity and its possible impact on the use of community buildings in villages nearby. Mr Hines indicated that an outline business case had been prepared and Suffolk County Council had been receptive to the idea. It was noted that the proposals mirrored a similar facility which had been provided at Wormingford in Essex.

A series of presentations was being delivered to Parish Councils in villages surrounding Monks Eleigh and all four visited, so far, had given their support.



**It was AGREED:** That a letter be sent to the organising group of the proposed Monks Eleigh Community Education Centre expressing the Parish Council's support for the venture.

#### **C145/15/16 DISTRICT COUNCILLOR'S REPORT**

Councillor M Creffield reported upon the following matters:

- Lavenham had produced a Neighbourhood Plan which could be of interest to the Neighbourhood Planning Group in Bildeston.
- The Bildeston lions had not been re-erected on the outside of the Red Lion public house following the grant of planning consent and Councillor Creffield would liaise further with the landlord about this matter.
- Meetings had been held with the Planning Officer and local parties regarding planning application B/15/01433 - Land East of Artiss Close and, Rotheram Road, Bildeston. Councillor Creffield intended to present the village's opposition to the planning application at the Planning Committee meeting later in the month.

In respect of the above planning application, the Chair, Councillor Guttridge, confirmed that he would be attending the Planning Committee meeting to express the Parish Council's opposition to the application and that he would liaise beforehand, with the Keep Bildeston Beautiful Group, which also intended to speak in opposition to the application at the meeting.

It was noted that planning application B/15/01110 - Redwick House, High Street, Bildeston, erection of a two-storey dwelling following demolition of existing buildings and structures, had been approved by the District Council. Whilst it was noted that Councillor Creffield had requested that the Planning Committee consider the application in view of the Parish Council's opposition to the application, it was noted that the Parish Council had not been informed of the date of the meeting. Councillor Creffield was asked if he could assist the Parish Council in future, by advising the Parish Council of the dates of meetings so that it had the opportunity to make representations directly to the Committee on the more significant and/or contentious planning applications affecting the village.

#### **C146/15/16 COUNTY COUNCILLOR'S REPORT**

Councillor Mrs J Antill had submitted a written report on the following matters:

- High Speed Broadband: Details of the planned coverage had been released at: [www.betterbroadbandsuffolk.com](http://www.betterbroadbandsuffolk.com);
- County Council Budget Round: The government settlement had been worse than expected meaning that the County Council would need to make savings of approximately £80 million over the next two years.
- Primary School Places 2016/17: All applications were due to be received by Friday 15 January 2016.
- The future of the Fire Service in Suffolk: The deadline for responses to the public consultation was 22nd February 2016.

#### **C147/15/16 VILLAGE AMENITIES AND OPEN SPACES**

Some fencing at the Coronation Playground had been damaged and a temporary repair had been made. A proposal would be submitted to the next meeting on what further repairs were required.

An enquiry had been received to reserve a burial plot in unconsecrated ground at the cemetery. It was identified that definitive details of what part of the Grove Cemetery was unconsecrated could be found at the Public Records Office.



### **C148/15/16 CLERK'S REPORT**

The Clerk reported that a Community Speedwatch coordination meeting would be held in Stowmarket on Thursday, 28th January, 2016 at 4.00pm involving representatives of Parish Councils and community volunteers from Great Finborough, Hitcham and Bildeston and the local Police.

### **C149/15/16 RESPONSIBLE FINANCIAL OFFICER'S UPDATE AND AUTHORISATION OF PAYMENTS**

#### **It was AGREED:**

- a. That the following payments be authorised:

<b>Payee</b>	<b>Description</b>	<b>Budget Category</b>	<b>Amount (incl. VAT)</b>
David Blackburn	Clerk's Pay	Salaries & Expenses	£173.09
David Blackburn	Expenses	Salaries & Expenses	£26.78
Adrian Chinery	Grounds Maintenance	Salaries & Expenses	£79.75
Adrian Chinery	Expenses	Playgrounds & Open Spaces	£20.00
Diane Drury	Salaries & Expenses	Community Events	£70.27
HMRC	PAYE (to end of Dec)	Salaries & Expenses	£478.20
Timm Joy	Clockwinder's Fee	Clock Tower Maintenance	£238.06
Stowmarket Town Council	Photocopying	Administrative & legal	£110.00
Suffolk County Council	Street Lighting	Street Lighting	£1844.28

(Note: All to be funded from General Fund except Clockwinder's Fee which shall be funded from the Kate Chamberlin Tower Clock Fund).

- b. That the quarterly budget monitoring report for the third quarter of 2015/16 be received and noted; and
- c. That a new bank mandate be prepared for Barclays Bank incorporating the details of all the current Parish Councillors.

### **C150/15/16 BUDGET AND PRECEPT 2016/17**

The Clerk reported upon the contents of the Parish Council's Budget Book for 2016/17 which contained details of:

1. The regulatory framework set out in the Accounts and Audit Regulations for managing the budget and calculating the precept;
2. The risks associated with the preparation of the Parish Council's budget;
3. The changes proposed to the budget compared with previous years; and
4. A three year summary of the previous year's income and expenditure, forecast income and expenditure against budget for 2015/16 and the proposed budget for 2016/17.

The Clerk reported that each year, the budget situation was becoming tighter, particularly in view of the phased removal of Local Council Tax Support Grant of £2024 over three years.



Income and expenditure were closely aligned leaving few funds available to contribute towards the replenishment of reserves each year.

Members of the Parish Council recognised that whilst this situation represented a prudent use of funds there had been no contributions to the Asset Replacement Reserve in recent years and the grants reserve was significantly below a level where it should be to support emerging community needs. The budget proposed at the meeting was £20,960 funded by a Precept of £19,625, support grant of £675 and other income of £660.

**It was AGREED:**

- a. That a Budget for 2016/17 of £20,960 be approved; and
- b. That the Precept for 2016/17 shall be £19,625 being £54.56 per Band D property calculated on a tax base of 359.70; and
- c. That it be noted that the Precept represents an increase in the region of £2.45 per property (4.7%).

**C151/15/16 PLANNING APPLICATIONS**

**Planning Appendix A: Planning Applications Consultation**

<b>Reference</b>	B/15/01551(and associated listed building consent)
<b>Address</b>	The Tower House, Market Place, Bildeston, IPSWICH, IP7 7EN
<b>Proposal</b>	Reinstatement of stud wall, insulation of internal door and satellite dish to rear of property (proposals are to facilitate changes to allow granny annexe)
<b>Response</b>	No objection

**Planning Appendix B: Determined by Babergh District Council**

<b>Reference</b>	B/15/01110
<b>Address</b>	Redwick House, High Street, Bildeston, IPSWICH IP7 7EX
<b>Proposal</b>	Erection of 1 No. two storey dwelling following demolition of existing buildings and structures
<b>Decision</b>	Granted

<b>Reference</b>	B/15/01554
<b>Address</b>	6 Chapel Street, Bildeston, IPSWICH, IP7 7EP
<b>Proposal</b>	Reduce 1 No. Ash tree back to previous pruning points protected by Tree Preservation Order No. BT78
<b>Decision</b>	Granted

It was noted that planning application B/15/01474 - 158 High Street, Bildeston, IPSWICH, IP7 7EF - Erection of a two-storey rear extension, re-cladding of exterior and internal alterations, had been withdrawn.



There were no issues raised.

**C153/15/16 MATTERS TO BE BROUGHT TO THE ATTENTION OF THE COUNCIL**

Councillor Dempsey questioned why Suffolk County Council had prioritised repairs to the pavements along Chapel Street and Duke Street ahead of those to Newberry Road which were in a poorer state. He also commented upon the unauthorised use of the Market Place by the highways contractor. Members of the Parish Council noted that toilets had been placed insensitively next to the War Memorial, there was potential for damage to be caused to the resin based surface of the Market Place and local people were being inconvenienced by the lack of availability of parking spaces. It was also noted that there was a potential risk of over-run of the project prolonging these problems as time spent on site by workmen had been limited. The consensus of the meeting was that the Sportsfield car park would be a better site for keeping plant and equipment subject to approval by the Sportsfield Management Committee.

**It was AGREED:** That the Chair liaises with the Highways Authority, as a matter of urgency, about the above seeking removal of plant and equipment and repair of any damage to the Market Place.

Councillor Lester reported that following works along Brooksfield a section of pathway had disappeared.

Councillor Drury indicated that she had been approached again by a local resident about the problems relating to standing water at the bottom of Wattisham Road at the junction with High Street.

**It was AGREED:** That the Clerk writes to the Highways Authority about the Parish Council's concerns regarding highways matters as discussed at the meeting.

Councillor Lester enquired about the release of funding to the Parish Church which had been approved at the previous meeting. The Chair indicated that funding would be made available when it was clear that the project would be undertaken.

Councillor Lester reported upon the collection of leaves in the area near at the bottom of Chapel Street and Duke Street joining with Church Road near to Bildeston Hall.

**It was AGREED:** That the Clerk would report the above to Babergh District Council.

Councillor Taylor had been approached by a parishioner about mud on the road caused by the Tankard Farm development on Wattisham Road.

**C154/15/16 CONFIDENTIAL BUSINESS**

Following the exclusion of the public in accordance with the Public Bodies (Admissions to Meetings) Act 1960, Councillor Dempsey reported upon progress made with regard to Mr Morpew's bequest. It was hoped that some funds from the estate would be released shortly.

Governance arrangements in respect of the oversight and use of funds were discussed by Members of the Parish Council.

The meeting closed at 10.15pm.





**Karma Babies**  
Infant Massage & Yoga

5 week courses in  
Stowmarket & Hadleigh areas  
1-1's or friends groups in the  
comfort of your own home

*Gift Vouchers Available*

**Call Wendy on 07867615922**

**wendy@karmababies.co.uk**

**www.karmababies.co.uk**



## SESAW SPRING TABLE SALE



10th April at The Old  
School, Long Melford  
Tables available at £10  
each  
Phone 01206 263269

## Lush Beauty Therapies

**The Old Post Office, Hitcham. IP7 7NF**

**Tel; 01449 744414 or 07872856888**

Offers waxing, tinting, spray tanning, microdermabrasion, gel nails,  
mink eyelash extensions, massage and more.....  
9am - 7.30pm weekdays & 9am - 1pm Saturdays.





# Bildeston Ladies Club

Now that we are into the New Year, how are your resolutions going? An easy one to try is to resolve to join a new group, make new friends and maybe learn something new – so why not come along and join us at

Bildeston Ladies Club



Our next meeting will be on February 4<sup>th</sup> for Roger Kennell's talk entitled Our East Anglian Heritage – in bricks !! Then, in March, under the guidance of our own experts, we will be making a floral arrangement for

Eastertime.

For this meeting we will be asking you to bring some basic items with you, so please watch for the list of what is needed in next month's Bugle, or give me a call nearer the time.



For those of you who like to plan ahead and have your diary filled in correctly, please note that our AGM in May has been moved to Thursday May 12<sup>th</sup> due to the Elections.

Our meetings are held in Chamberlin hall which is open from 7:30 p.m. for us to start at 8:00 p.m. on the first Thursday of each month.

Members - £2      Guests - £3

Look forward to seeing you there! Jo Silburn    740504 - Bookings Secretary

## *Walnut Tree Designs*

### **BESPOKE CURTAINS & BLINDS**

*Free design consultation in your own home-Complete made-to-measure service  
for all your soft furnishings requirements*

**CUSHIONS - FABRICS – TRIMS- POLES - UPHOLSTERY - PELMETS - HEADBOARDS**

*Call Terri Oxley*

**01284 828263 M:07826930011 email [walnuttreedesigns@gmail.com](mailto:walnuttreedesigns@gmail.com)**



# James Cartlidge MP



Will be holding a constituency surgery at  
Boxford Village Hall

Stone St Rd, Boxford, Sudbury, Suffolk CO10 5NP

Friday 26<sup>th</sup> February 2pm-4pm



Please email [helen.harris@parliament.uk](mailto:helen.harris@parliament.uk) or phone  
020 7219 4875 to arrange an appointment

Strictly by appointment only



[www.facebook.com/james4southsuffolk](https://www.facebook.com/james4southsuffolk)



[@jc4southsuffolk](https://twitter.com/jc4southsuffolk)



### MAKE A NEW YEARS RESOLUTION TO WRITE YOUR WILL IN 2016

**Age UK Suffolk** is organising a **Will Month** during **February 2016** and have joined up with 16 local solicitors in Suffolk to offer a free will writing service, for a donation to the charity. The scheme in association with the East Anglian Daily Times aims to raise awareness of the importance of making a Will. Over two thirds of people in the UK do not have a Will! As a new year approaches there has never been a better time to make sure you are prepared for the future. Older people are living longer and care needs, lasting power of attorney, second marriages, extended families, civil partnerships, funeral costs, inheritance tax all need to be addressed. Planning for later life is essential and making a Will is so important to avoid many complications and extra costs and to ensure your beneficiaries are protected and you will have peace of mind knowing your wishes will be fulfilled.

A basic single or mirror will is being offered for a suggested donation to Age UK Suffolk and the following solicitors are taking part: Goodwin Cowley Solicitors, Fosters Solicitors, Atkins Thomson Solicitors, Gross & Co Solicitors, Jackmans Solicitors, Norton Peskett Solicitors, Petersfields LLP Solicitors, Ellisons Solicitors, Watkins Stewart & Ross Solicitors, Christchurch Solicitors LLP, Michael Smith & Co Solicitors, Bates Wells & Braithwaite Solicitors, Blocks Solicitors, Haywards Solicitors, Fairweather Stephenson & Co Solicitors and Gotelee Solicitors.

Maggie James, Individual Giving Officer, Age UK Suffolk said "we are delighted that 16 solicitor practices in Suffolk are supporting the Age UK Suffolk Will Month and giving their time free of charge and offering a Will Writing service for a donation to the charity." Maggie continued "We are very aware of the need for people to make a Will as very often people do not make a Will until much later on in life, or not at all, and complications can arise and be very costly. The right planning for later life matters and paperwork in place gives peace of mind for people of all ages and ensures families and loved ones are looked after in the future. It also gives people the opportunity to leave a lasting gift to a charity which can reduce the inheritance tax bill for the beneficiaries."

Age UK Suffolk rely on legacies and donations, particularly as they are suffering major cuts in funding from statutory sources and will need to fundraise for almost 75% of the costs of its services in the future.

**For more information contact Maggie James 01473 359911 or email [maggie.james@ageuksuffolk.org](mailto:maggie.james@ageuksuffolk.org) or visit the website [www.ageuksuffolk.org](http://www.ageuksuffolk.org)**

Please refer to "**Age UK Suffolk**" the Suffolk-based independent charity in any coverage. We are separate from "**Age UK**" the national charity and as we such are responsible for our own income generation to support our work with and for the older people living in Suffolk. Every year it costs £4.3m to fund Age UK Suffolk and our services for older people. Currently only 45% of our income comes from statutory sources, we have to generate the remaining 55% which will increase to 75% next year. We have a multi-disciplinary team of 170 full time equivalent staff members who are supported by over 750 volunteers. Our services comprise information, advice and support for older people to help maintain their independence, dignity and choice. For more information visit [www.ageuksuffolk.org](http://www.ageuksuffolk.org) or call 01473 359911.

#### Contacts

Maggie James, Individual Giving Officer  
Age UK Suffolk, 14 Hillview Business Park, Old Ipswich Road,  
Claydon, Ipswich IP6 0AJ  
01473 359911 or mobile 07748748717  
Email: [maggie.james@ageuksuffolk.org](mailto:maggie.james@ageuksuffolk.org)





Stowmarket \_\_\_\_\_  
**Chorale**

**Conductor Leslie Olive**



**SINGING DAY**  
***MOZART***  
**CORONATION MASS**  
**and more**

**Sat 27 February 2016**

**£15 (including buffet lunch)**

Hire of scores included . All levels of experience

**Registration from 9.30am, start 10am, finish at 4pm**

**Stowmarket United Reformed Church**

**Ipswich Street, Stowmarket IP14 1AD**

To book: contact Sue Price on 01787 210913

**or visit [www.stowmarketchorale.org.uk](http://www.stowmarketchorale.org.uk)**



# Zor Boutique at Kersey Mill



Stunning jewellery, scarves,  
bags, purses, clothing & shoes.  
All at affordable prices.

Call: 07969525859

Web: [www.zoronline.com](http://www.zoronline.com)

Email: [zoronline.sales@gmail.com](mailto:zoronline.sales@gmail.com)

Kersey Mill, Stone Street IP7 6DP  
(Near Hadleigh)

## THE FLOWER SHOP

AT KERSEY MILL

*Local and Nationwide deliveries available*

☎ 01473 805156

*At The Flower Shop our team create all aspects of Floristry from bouquets, arrangements, baskets, wedding and sympathy flowers.*

*Our florists create beautiful arrangements just for you. We use fresh seasonal flowers, purchased daily in all bouquets, baskets and arrangements.*

*Visit The Flower Shop today, order online, call and collect or arrange a delivery.*

🌐 [www.theflowershopkm.com](http://www.theflowershopkm.com)

✉ [sales@theflowershopkm.com](mailto:sales@theflowershopkm.com)

*The Flower Shop at Kersey Mill, Ipswich Suffolk IP7 6DP*





D'ENZA



HAIR & BEAUTY SALON at  
"KERSEY MILL"

*"February Offers"*  
*"Valentine's Day 14<sup>th</sup> February!"*

**1: Valentine's Special offer ~ Hot Stone Back, neck & shoulder massage**

**Special Price of £20**

**2: Valentine Luxury Special offer ~ Elemis Skin Specific Facial 1hr treatment with a Swedish back, neck & Shoulder massage 25mins.**

**Special Price of only £40**

**3: Hair~ Wash, Cut & Style 50% off "Only for February"**

**Special Price of only £13.25**

**4: Men's Hair cuts only in February.**

**Special Price of only £8**

**5: 50% off Individual, Russian eyelashes & Gel nail extensions~ Limited space**

**Special Price Individual £32.50-Russian £40 & Gel nail extensions £20- Colour gels £22.50**

The above offers can not be used with another offer.

Please telephone for more information or make a booking on: **01473 829069**

For opening times & brochure please look at our website: [www.denzahairandbeauty.com](http://www.denzahairandbeauty.com)

Email- [emmaspraggons@yahoo.co.uk](mailto:emmaspraggons@yahoo.co.uk)

Address: Kersey Mill, Kersey, Ipswich, Suffolk. IP7 6DP.



O.P.I



Kersey Mill, Kersey, Ipswich, Suffolk. IP7 6DP.



From:- Cllr Michael Creffield

Babergh District Councillor for Brett Vale which includes villages of  
Bildeston, Hitcham, Brettenham and Wattisham.

I am readily available either by email or if needed I live in Hitcham and  
can either welcome visits or can call to see you if required.

My Contact Details are:-

Michael.Creffield@babergh.gov.uk

Tel:-01449 744250 ( Answer Phone will take calls)

Tudor House, The Causeway, Hitcham IP7 7LJ

## Lent course

### **'The Beckoning God'**

**On Thursday's: 7-00pm @ The Baptist Church, Bildeston  
Feb 11<sup>th</sup>, 18<sup>th</sup>, 25<sup>th</sup>, and March 3<sup>rd</sup>**

**Time to reflect on the different ways people hear the voice of God.**



**Local Caring Independent Funeral Service**

24 Hour Personal Service \* Private Chapel \* FREE Parking

[www.andrewbingham.co.uk](http://www.andrewbingham.co.uk)

**01449 771666**

The Nutshell, Milton Road South, Stowmarket, IP14 1EZ



**Golden Charter**  
Funeral Plans





**BILDESTON w WATTISHAM,  
WHATFIELD w SEMER, NEDGING & NAUGHTON**

**SERVICE SCHEDULE – February 2016**

<b>February 2016      NB – Services in bold are Benefice Services</b>			
Feb 7th 1 before Lent	11.00am	Sunday Service	Bildeston
<b>Feb 10th Ash Wednesday</b>	<b>9.30am</b>	<b>Holy Communion with ashing</b>	<b>Whatfield</b>
Feb 14th Lent 1	11.00am	Holy Communion	Bildeston
Feb 21st Lent 2	11.00am	Morning Prayer	Bildeston
<b>Feb 28th Lent 3</b>	<b>11.00am</b>	<b>Benefice Holy Communion</b>	<b>Nedging</b>

## Baptist Church, Duke Street, Bildeston

Jim Haley tel: 01449 740716 email: bildestonbc@gmail.com

**Service every Sunday morning at 10:45**

**Lunch Club: at 12:30 on the first Wednesday of each month –**

All are most welcome

**Community Coffee Centre: Every Friday from 09:15 to 11:30**

Enjoy meeting old and new friends at these events!

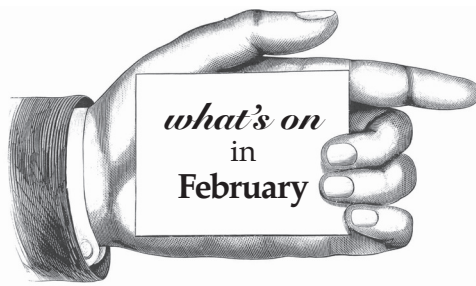
**‘Craft it Together’ - Every Monday at 7pm.**

Bring along your craft activities and join us for an informal, relaxed evening -  
share ideas, gain new skills or just enjoy doing your own thing.

Cost **£1.50** - drinks provided. Contact **Elaine on 01449 740716** for information

**‘Men’s Breakfast’ - last Saturday of each month at 8am**





**Bildeston Community Coffee Centre**

Baptist Church 9:15-11:30 ..... **Every Friday**

**Lunch club**

Baptist Church 12.15 for 12.30pm start.....**1st Wed every month**

**Craft it Together**

01449 740716 for details.....**Every Monday**

**Strollers & Striders**

Baptist Church Car Park 10:00 ..... **Every Monday**

**Baby & Toddler Group**

Baptist Church 9:15-11:30 ..... **Every Tuesday**

**Pie Night**

The Crown 7.30pm please book.....**Mon 8th**

**Winter Warmer Bike Ride 5**

9.30am Market Square.....**Sat 6th**

**CHAPS Jack and the Beanstalk Panto**

Chamberlin Hall .....**5th and 6th 7.30, 6th 2.00pm**

**Lent Course**

The Baptist Church 7.00pm.....**11th, 18th & 25th**

**Bildeston Community Choir**

Bildeston Primary School 7.00 - 9.00pm.....**Mon 22nd**

**Stowmarket Chorale Singing Day**

Stowmarket Reformed Church 9.30am.....**Sat 27th**

**Men's Breakfast**

Baptist Church 8:00am.....**Last Saturday of the Month**

*More details on events inside.*

Please tell us about your events in **March**

email: [editor@bildestonbugle.co.uk](mailto:editor@bildestonbugle.co.uk)

When you're finished with this bugle please pass it on or recycle it.

