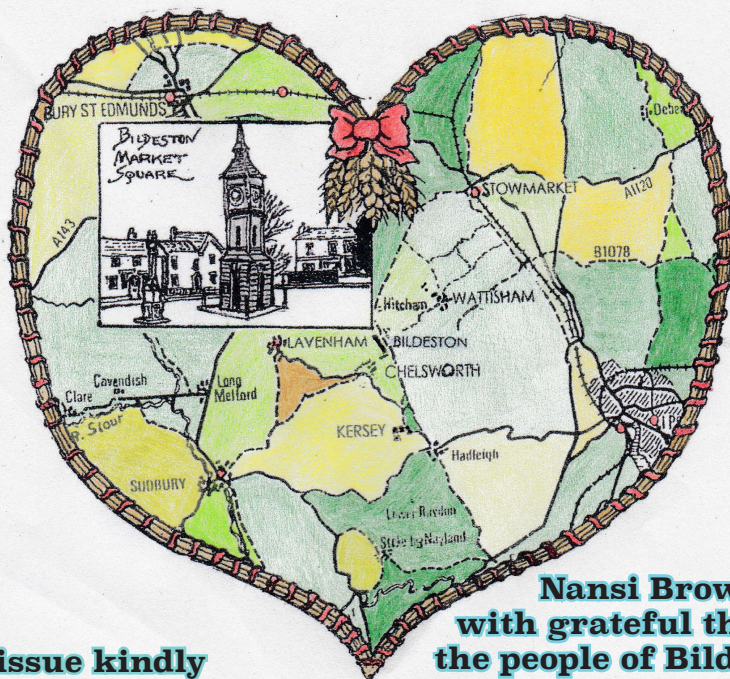


Issue number 303
January 2016



**This issue kindly
sponsored by -**

**Nansi Browne
with grateful thanks to
the people of Bildeston for
their enthusiastic singing
and support for the
Waytes Carols 2015**



Saint Mary's Church, Bildeston, Suffolk.

The village magazine produced for the people of Bildeston



BILDESTON BUGLE ADVERTISING AND FREE CONTRIBUTION INFORMATION

Our aim is to provide every resident in Bildeston with a magazine which provides information of local interest FREE OF CHARGE. To that end we are required to be efficient in the space we use to print free notices. We endeavour to include interesting items, announcements for events open to the general public for free and items of a charitable nature free of charge. Ongoing free announcements need to be reduced to minimum size or make a contribution towards printing costs. Please check with us before submitting your advert and ALWAYS provide us with all of your contact details in order for us to send a receipt.

email: editor@bildestonbugle.co.uk

Sponsor a 'Bugle' – £15 per issue

includes a brief message of your choice on the cover of the magazine

Advertising Rates

	1 issue	6 issues (15% disc)	12 issues (30% disc)	
1/4 page	£3.00	£15.00	£26.00	65mm W x 92mm H
1/2 page	£6.00	£30.00	£50.00	134mm W x 92mm H
Full page	£12.00	£60.00	£100.00	134mm W x 190mm H

THE SMALL PRINT

All adverts, payments and items are required by the 17th of the month for inclusion in the following month's issue (except December).

The earlier free contributions are received the greater the chance of inclusion.

Please make cheques payable to Bildeston Bugle and send to:

The Editor, Bildeston Bugle, 14 Squirrells Mill Rd, Bildeston IP7 7DY

Receipts cannot be issued without your full postal address.

If we do not receive payment by the 17th of the month your advertisement may NOT be included

The Bildeston Bugle Management Team is:

Alan Jacobs (Editor) 01449 741645

Christine Hubbard (Treasurer) 6 Manor Road 01449 740633

Tricia Baldwin (Advertising Revenue)

Angie Biddulph (Bugle Team Liaison)

Stuart Law (Assistant Editor)

Alison Sims (Marketing)

ED'S COMMENT

Happy New Year to you all. We say this to everyone we meet from 1st January right through to when we each decide it is no longer appropriate and it sounds daft because we are well in to 2016! But after the events at the end of 2015 wishing everyone a happy new year seems much more meaningful. We can only, genuinely, trust that it will be a happy new year, a year full of hope, full of expectation and success in so many ways.

There is a wonderful quote that is worth sharing from St. Francis. When he established his Franciscan order of friars he told them to, "Go out and spread the word of the Gospel, and use words if you have to!" This is not just a religious message, it is about reminding everyone that what we actually do says much more about us than what we say. 'Actions speak louder than words' is another take on the same theme.

Hopefully that's true. Take for example the New Babergh & Mid Suffolk Joint Local Plan document: Public Consultation (reg. 18) for which the next round of public consultation starts sometime in early 2016. This is Mid Suffolk and Babergh Councils' work on the latest part of their planning policy framework that, in due course, will replace the 1996 Babergh Local Plan and the 1998 Mid Suffolk Local Plan. The document will, amongst other aims, according to its website:

'Update and super-seed elements of the Adopted Core Strategies.'

Either whoever wrote that is steeped in rural Suffolk lore and knows something about *super seeding* that those of us who are not farmers don't, or they failed miserably at their English 'O' Level! The correct spelling of the word is supercede, sometimes spelled supersede, and defined as to replace someone or something. But maybe it doesn't matter so much anymore to be able to spell correctly. For the first time ever, the Oxford Dictionaries Word of the Year is a pictograph: 😊 officially called the 'Face with Tears of Joy'. This emoticon, was chosen as the 'word' that best reflected the ethos, mood, and preoccupations of 2015. Given what happened in Paris near the end of 2015 we may well agree with a face that seems to show both joy and sadness.

As language is a living, changing thing and spelling is an integral part of language perhaps we shouldn't care if spelling is correct? Think of the difficulties our children have when they try to learn the differences between, through, rough, nought, cough, though and bough? Read them all out loud!

New words added to the dictionaries in 2015 connected to what we do, our actions, and include **vape** (linked to the new e-cigarettes), **twitterati** (linked to the growth of social media on-line) **freegan** (someone who eats food being discarded) and **twerking** (look it up or ask someone who regularly watches pop music videos!). So what we do, more than what we say, is hugely important.

A very happy new year and all the best for 2016

Lindsey Painting & Decorating Services

Professional & reliable interior and exterior home decor. Paint, Wallpaper Coving etc. Plus other allied services, Woodwork, tiling, laminate flooring. Curtain hanging, tracks/pelmets fitted.

Terry Peters

Home 01449 741483

Mob 07809 571790

Email tac59@talktalk.net

Friendly Experienced
Teacher offers
Individual

MATHS Tuition

Speciality
Confidence Building
KS1 – KS3

Call Colin Plummer on
01449 736918
for details and availability
or email:
colinp52@btinternet.com

Angel Delights

**Outside Caterer &
Specialised Confectioner**

Weddings – Christenings – Funerals
Birthday Parties - Barbecues - Dinner Parties

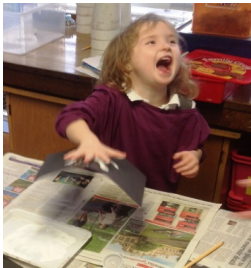
Tradional tea room now open
at 85 high Street Hadleigh

CAKES FOR ALL OCCASIONS

Contact Helen
01473 828191
info@angel-delights.com
www.angel-delights.com

BILDESTON PRIMARY SCHOOL

The children and staff at Bildeston Primary School would like to wish all Bugle readers a very Happy New Year.



We had a very busy end of term at the end of last year. All of the children had great fun making hats for their Christmas lunch and they also made calendars for the New Year. We performed our Christmas carol service to a packed audience and also shared the usual mince pies and refreshments! We would also like to thank Hollow Trees Farm Shop for donating our wonderful Christmas tree. The children in KS2 had an exciting time decorating it for our school hall.

Final News from 2015!

AGT ICT Day

Two of our pupils were chosen to attend an ICT workshop which took place on Tuesday 24 November at Beaumont Primary School where they learnt about Online Safety. This event was also attended by pupils from across all of our pyramid primary schools.

Maths Day

Two of our pupils were given the opportunity to join a Maths Enrichment session which included maths activities and a quiz run by

Mrs Hopkins who is the Maths co-ordinator at Whatfield Primary School. Again, this event was attended by pupils from across all of our pyramid primary schools. Back at school, our Year 5 pupils were busy making 3D cones!



Events for 2016

Our PTFA are organising a Valentine's Disco in February, creating a school Cook Book and they will be holding their annual Summer Fayre on Saturday 9th July.

Our KS2 pupils will be studying British History focussing on the Victorian era and they will also be taking part in a Victorian Day hosted by "Portals of the Past". Our KS1 pupils will be studying Inspirational People.

We'll also be keeping ourselves occupied outside of the classroom at lunchtime and after school with our usual clubs that the children can choose from. These include Multi Sports, Gymnastics, Dance, Fencing and Archery. What a lot to pack into a short term!

Learning and Growing Together"

Newberry Road, Bildeston, Ipswich, Suffolk, IP7 7EU

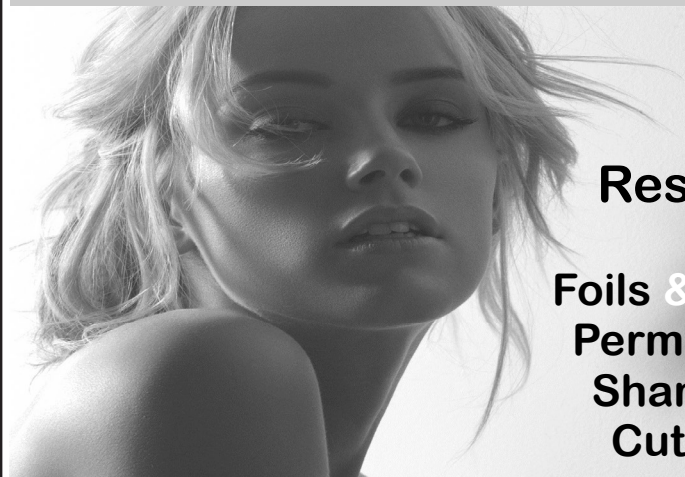
Telephone: 01449 740269

Website: www.bildeston.suffolk.sch.uk



Studio 66

Ladies and Gents Hairdressers



Restyling

**Foils & Highlights
Perms & Colours
Shampoo & Sets
Cut & Blow Drys**

**Friendly Service from our Professional Team
Tue & Wed Senior Citizens**

*****special rates *****

Opening Times Tues - Friday 9 - 5 pm Sat - 8 - 1pm



Tel 01449 740644

52A High St Bildeston IP7 7EA

Aaron Clarke

Accountants

Professional accountancy services
with a personal touch

Accountancy

Taxation

Bookkeeping and VAT

Management Accounts

Payroll

Company Secretarial Services

Business Start-Up's

If you are struggling with your tax return or accounts...
contact Luke Harvey or Ian Chambers
for a free initial consultation

Main Office

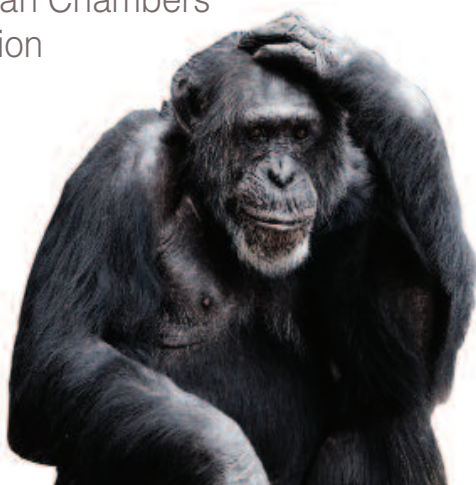
1 The Street
Elmsett, Ipswich
Suffolk IP7 6PA

Tel 01473 657763

Fax 01473 657764

www.aaronclarke.co.uk

info@aaronclarke.co.uk



Rediscover your world of **SOUND**

The multi-award winning Hearing Care Centre team are caring for all your hearing needs locally in:

Needham Market

The Country Practice, Barking Road

Hadleigh

The Health Centre, Market Place

Stowmarket

StowHealth, Violet Hill Road

- Hearing tests ■
- Latest digital hearing aids ■
- Outstanding aftercare ■
- Ear wax removal ■
- Noise protection ■
- Tinnitus management ■
- Hearing aid repairs ■
- Home visits also available ■



Karen Finch RHAD FSHAA FRSA

**To book your appointment
please call 01473 230330**

■ Award Winning ■ Family Run ■ Private ■ Independent ■ 20 Local Centres

hearingcarecentre.co.uk

COUNTRYSIDE OBSERVER



Leaving early in December for a trip to Manchester I went via Wisbech then on across the Fenlands skirting the wash before cutting inland towards Chesterfield. The area north of Wisbech is heavily farmed with mile after mile and acre after acre of veg or glass houses. At this time of the year are the never ending vistas of Sprout fields. The plants closest to the road showed great looking veg all of a good size. Workers were arriving in mini buses and moving off into the fields. Soon my route left

the flat Fens behind. Coming through Chesterfield I marvelled at the warped wooden spire of St Mary and All Saints a long time landmark for travellers to this part of the country. If ever there was a reason for using seasoned timber this is it. The Crooked Spire Church, was built in the late 13th Century and finished around 1360. It's the largest church in Derbyshire. The Spire stands 228 feet from the ground and leans 9 feet 5 inches from its true centre. The Spire was built straight and the reason that it 'twisted' may be the amount of green timber used during its construction. Then 32 tons of lead tiles were placed on top, enough to bend anyone's back! My journey continued into the beautiful Peak District stopping briefly in Buxton then turning north for Manchester via the lovely town of Glossop, a busy, bustling former mill town and the largest settlement in the north-western corner of the Peak - though like Buxton it lies just outside the National Park boundaries. The name Glossop is thought to be of Saxon origin, derived from Glott's Hop - where hop is a small valley and Glott was probably a chieftain's name. However, the area was certainly inhabited long before the Saxons, as the Bronze Age burial site on Shire Hill and the Bronze Age remains around Torside testify. When the Romans arrived in 78 AD the area was under the control of the Brigantes, a tribe whose main base was in Yorkshire, and the main purpose of the fort at Melandra was to subjugate this warlike tribe. The town became the Borough of Glossop in 1866 and in this period several fine buildings were constructed around the new centre of the town at Norfolk Square - the Town Hall and the Market Hall to name just two. It provides an excellent base for accessing and visiting the western parts of the Dark Peak, including Black Hill, Bleaklow and Crowden as well as Chinley and Coombes. The drive west across Snake Pass towards Sheffield is dramatic and beautiful but not to be undertaken lightly in harsh winter conditions.

I recall a couple of winters ago people on the nearby snake head pass were stranded in a blizzard and took refuge in the pub there for four days until rescue. Local towns were all looking Christmasy, decorations in place and lights a twinkling. I aimed my car at North Wales and Wrexham. Fridays morning sales call was postponed so rather than spend the night in a nondescript roadside inn, I had an early evening meal then parked up for two hours of sleep. Leaving just after 8-30 PM I set course for London 246 miles distant arriving at my office at around 11-40PM. When we took on our new factory and showroom, part of the fit out brief included a small room including a single bed and shower facility very useful at times. It allowed me to be up early Friday morning and at my desk by 06-30 finishing this script for the bugle. **Mike Biddulph**

COUSINS & SON BILDESTON LTD

available to carry out all your building requirements
from
Renovations / Alterations / Extensions
to
General Repairs

Please contact Paul for a free estimate
01449 744360 or 07876 244461
or email paul.cousins268@btinternet.com

Tired of Housework?

COUNTRY MAIDS

A highly experienced home cleaning service

Established over 24 years, COUNTRY MAIDS
provides a service for all home cleaning from
brass, ovens, windows, kitchens and polishing.

All materials and equipment provided.

No contracts.

For a free quote telephone:

(01449) 741108

WANTED

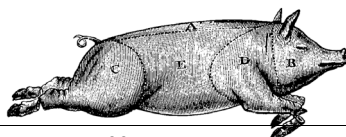
Bricett Business wants
gardener to cut 400 metres of
thorn dwarf hedge 3/4 times a
year , strim verges on a pond
and business park entrance
ditches embankments, and
cut verges the grass with our
ride on mower optional, we
could that ourselves, all tools
supplied. We also need to cut
and tops out of Leylandi trees
about 200 metres long and 16
ft high.

**Call John Cooper on
07733 321 197**

BANK HOUSE STORES

and Post Office

Richard & Joan
O'Sullivan



telephone
01449 740403

Wishing you all a Merry Christmas
From Richard and Joan and all the staff

As usual we will be open everyday except Christmas Day and right up to 7pm on Christmas Eve, so there's no need to panic and get back in the car for those last few items. We will be open on Saturday 26th, Sunday 27th and Monday 28th from 8am until 12 midday (including Post Office).

Our Special Offers aren't "one day only" or "limited stock". This selection is available until the 2nd of January:

Family Circle Biscuits	Christmas Box	Only £3
Pringles	Half Price	Only £1.34
Tropicana Orange Juice 850ml		2 for £3
Quality Street/Roses	Big Tins	Only £5
Ocean Spray Cranberry Sauce		Only £1
Schweppes Mixers/Lemonade		2 for £2
Treviso Prosecco	Half Price	Only £6.49
Secretary Bird Merlot/SauvBlanc/Shiraz		Only £4.99
Famous Grouse		Only £13.50
Jack Daniel's		Only £20
Carling Lager	12-Pack	Only £10

.....plus many, many more.

We are open from 7am to 7pm Mon-Sat (6.30 for the Post Office - 6 o'clock on Wednesdays) and 8.00 to 12.00 every Sunday and Bank Holidays.

Shop Locally - You need a jolly good reason not to!



KINGS HEAD & Brewery

Nigel, Susie, Ryan and Freya wish you all the best for **2016** and look forward to welcoming you to the Bildeston Kings Head.
www.bildestonkingshead.co.uk

- Here's our **free live music** for **January**: every **Wednesday** is **Open Mic Night** from **8:30pm**; from **9pm** on **Saturday 30th** the superb acoustic duo of our local **Georgette and the Distraction** will be entertaining you for sure; and from **1pm** on **Sunday 31st** have a relaxing lunch with **Kevin Nightingale's** contemporary classical acoustic guitar.
- Our monthly **charity quiz night** is on **Thursday 28th January** at 8:30pm, please arrive by 8pm. To book a table telephone Sue or Nigel on 01449 741 434. Thanks to last November's teams who raised **£105** for the **RNLI**.
- Our good value homemade food uses quality ingredients that are locally sourced where possible. We are well known for tasty beer-battered fish & chips, delicious boozy beef pie (Suffolk red poll beef) and our freshly prepared traditional Sunday roasts. Meals are cooked to order, available to eat-in or take-away and in child sized portions. To reserve a table please phone **Sue or Nigel on 01449 741434**.
- We brew our own real ales on-site (tours by arrangement) with at least one other from a local independent brewer.
- Our opening times are as follows:

Wednesday	Open 6pm-12am (open mic/buskin night)
Thursday	Open 6pm-11pm (bar games night)
Friday	Open 4pm-12am (full menu 5-9pm, T/Away 5pm)
Saturday	Open 12pm-12am (full menu 12-2pm & 6-9pm)
Sunday	Open 12pm-10:30pm (roast/Sunday menu 12-3pm)
Monday/Tuesday	Closed (except some bank holidays)

Community Buying at CAS Ltd



**Want to save money on the
cost of your heating oil?
So do we!**

**Join our new community-based
countywide oil buying syndicate
and see how easy it is**

Community Buying at CAS Ltd

Tel: 01473 345400

**Email: oil@communitybuying.org.uk
www.communitybuying.org.uk**



Community Buying at CAS Ltd, reg. no. 04794467, is a subsidiary of Community Action Suffolk, a charity working to strengthen and champion communities across the County.

Registered office: Brightspace, 160 Hadleigh Road, Ipswich, Suffolk IP2 0HH
Community Action Suffolk Registered Office as above. Registered Charity Number:
1150501.

A company limited by guarantee and registered in England. Number 08316345

THANK YOU to all those who helped with the running of St. Mary Magdalene Church, here in Bildeston, during 2015. There are so many people who have helped with the cleaning, the flowers, the locking and unlocking of the Church, the maintenance of the Church yard, the Roundabout, fundraising and the over 60's lunch. This is all really helpful to me, and helps make sure the Church is kept neat and tidy and looking good for all our Sunday services as well as weddings, baptisms and funerals. We have recently had water connected at the Church and look forward to our new toilet and kitchen facilities in 2016. I am still looking for somebody to join me, as another churchwarden, to help share the tasks and care for the church. Please get in touch if you are interested.

Once again thank you for all your help.

Wishing you all a very happy new year,

God bless

Teresa Lester – Churchwarden 01449 744120

+++++

St. Mary Magdalene church cleaner needed

If you are interested in helping with cleaning the church for a couple of hours, once every four or five weeks. Please give Teresa a call on 01449 744120

Workshops in January

Brook Farm Studio

Sat 9th Creative Embroidery 10 - 1.30pm
£22.50

Sat 9th Painting for all 2pm-5pm £10

Sat 16th Pottery 2pm-4.30pm £20

Sat 16th Figurative Drawing 10am-1pm £10

OPEN DAY January 30th 10 - 4pm including
Pottery, Creative Embroidery, Painting and
Felting

Regular Weekly Classes

Wednesdays Craft 10am-12.30pm £6

Thursdays Felting & Textiles

10am-12.30pm £8

Fridays Painting 10am-12.30pm £8

Website: www.brookfarmstudio.co.uk

email: brookfarmstudio@gmail.co.uk

Booking essential call Hazel on 07432 138966 or 01473 823819

LAXFIELD HOUSE NURSING HOME

BRENT ELEIGH, Nr LAVENHAM, SUDBURY, SUFFOLK

Situated in a quiet village location with beautiful gardens, offering residential and full nursing care for elderly people.

A highly trained team of nursing sisters and care staff provide excellent nursing care with kindness and compassion, ensuring privacy and dignity at all times.

*** Long or short term respite care available ***

A warm welcome is always extended to all visitors



All rooms are well appointed with en-suite facilities.
Nurse Call System, Passenger Lifts, Various Public Rooms

This nursing home was established over 25 years ago by the current proprietor and family with ongoing input and management.

**Enquiries to - Mrs J. Carne RGN, RM, (Matron)
Mrs E. P. Knight RGN, RM, Mr N. Knight (Proprietors)**

Telephone (01787) 247340 / 495

**enquiries@laxfieldhouse.co.uk
www.laxfieldhouse.co.uk**



Member of the Registered Nursing Home Association

WHO IS FATHER CHRISTMAS, DAD?

Who is Father Christmas, Dad?
Our Billy keeps saying it's you.
In fact, just last night, we got in a fight
Because he insisted it's true.
I told him, I said: "No he isn't,
Father Christmas is jolly and fat,
He never gets mad, so it can't be me Dad
We both know he's nothing like that!"
Besides, Dad, we've seen Father Christmas,
Me Mum, and our Billy and you:
He was on the top floor
Of that town centre store
So that ought to prove it's not true.
Then again, Dad, there's his reindeer:
Gee whizz, Dad, those reindeer can shift,
For they got from that floor
To a neighbouring store
Before we'd got down in the lift.
Our Bill says there's no Father Christmas,
Or reindeer that fly through the air,
He says if there was
They'd get flattened because
Of the jetliners flying up there.
I said he was just talking rubbish
I told him: "That's all that you know!"
'Cos what he forgot was they'd show as a dot
On radar control at Heathrow.
Besides, Dad, remember last Christmas,
You went out for a drink with the boys.
And Uncle Fred said they'd to put you to bed,
But we still got plenty of toys.
Alright, Dad, I'm going to sleep now,
I love Father Christmas, it's true.
He brings lots of toys to good girls and boys –
But most of all, Dad – I love you!

*Sorry, Folks! I cannot lay claim to this lovely verse:
it turned up during a trawl of the Internet. Happy
Christmas, Tim.*



A PAGE FOR THE CHILDREN OVER THE HOLIDAY!



Find the differences!



Pilates Classes Now Held at Kersey Mill

If you want to exercise both your body and mind as well as improving your sense of well being, strength, flexibility and mobility then I truly believe pilates is for you!

I am passionate about bringing the benefits of pilates to everyone and as a fully qualified teacher certified by Europe's largest professional pilates organisation I can help you improve muscle tone and core stability, building strength from the inside out, re-balancing the body and bringing it into correct alignment.

Please contact me if you wish to join a small matwork class and allow me and the Body Control Pilates method help you achieve your goals. Pilates can benefit anyone of any age and any level of fitness. I look forward to hearing from you.

Call 07855 394 703 for more info.

www.pilatesworks4u.com

*Jenny
x*



Purple Daisy

I offer a full range of both modern and traditional floral designs including:

- Christmas wreaths
- Weddings
- Funeral Tributes
- Special Occasions

I would be delighted to offer you a free consultation to discuss your floristry needs.

Contact Davina on 01284 828006 / 07920 145418

Bildeston Sportsfield Pavilion



looking for a venue?

Function room and sportsfield for parties, events, rehearsals, meetings, clubs and much more.

For more information and competitive rates please ring 01449 741563 or e-mail secretary@sportsfield.bildeston.org

**Now Frying At Market Square
Bildeston
Friday's 11am – 1:30pm**

**The Travelling
Friar**

**Local Mobile
Fish & Chip Shop**

**Functions Catered For
Shows • Parties
Weddings • etc.**

**Telephone
01473 830771**

HONEY BEE'S NURSERY

Hitcham Village Hall, Hitcham, IP7 7NE

FOR CHILDREN AGED 2 – 5 YEARS

Open Mon, Wed, Fri 9.15a.m. – 12.15p.m. or 3.15p.m.

Tues, Thurs 9.15a.m. – 12.15p.m.

Early Drop Off – 8.30a.m. Lunch Club Daily until 1.15p.m.

Fee's @ 2.50 per hour (3 hour session = £7.50)

2 Indoor Rooms and Outdoor Areas

Ofsted Registered

Early Years Funding accepted for all 3 & 4 year olds

2 year old funding may also be available

Free Taster Session Available

Contact: Sharon Scarfe 01449 740764 (hall) 01449 740581 (home)

Dentist

Paul Rolfe BDS

Veneers & Crowns in a
single visit

Dental Implants

Family Dentistry

**Lavenham &
Long Melford**

01787 882722

www.paulrolfedental.co.uk



**Green Farm
Vintage China
Hire**



A wide range of vintage china
and glass to hire for any occasion.

carole.homer@btinternet.com
Tel: 01449 741498

CPH GARDEN SERVICES

All Jobs Considered, Large & Small

Grounds Maintenance

Garden Clearance

Patios, Decking & Pathways

Fencing

Painting & Decorating

Please contact us to discuss your needs
and obtain a no obligation quotation.

Telephone: Paul - 01449 740020

Telephone: Chris - 01787 210536

Email: chris.harman1990@gmail.com

P.D. ROSE.

Plumbing / Heating & General Building

- Plumbing & Heating Repairs
- Complete Bathrooms & Tiling
- Int. & Ext, Decorating
- Building Maintenance

Tel. 01787 211042

Mob. 07974 290697

3. Fen Street, Boxford, CO10 5HL

FIREWOOD

DRY SEASONED LOGS

Various Loads Available
Or bags at £5.50 each

Call Carol Abbott on 01473 829130
or 07768 795981

Tree, Garden Work and Driveways also
Undertaken





C.H.A.P.S

Presents

A PANTOMIME FOR ALL THE FAMILY

JACK AND THE BEANSTALK

at

Chamberlin Hall, Bildeston

on

Gala Night Friday 29th January at 7.30pm

£5 Adults/£3 Children

Saturday 30th January at 7.30pm

Sunday 31st January Matinee at 2pm

Friday 5th February at 7.30pm

Saturday 6th February Matinee at 2pm

£7 Adults/£5 Children

and

Saturday 6th February at 7.30pm

£12 Adults/£8 Children including food

Tickets on Sale from 6th January

Box Office (01449)740995

BARGEWELL SKIP HIRE

2 - 8 yard skips
1 ton waste bags
We also collect any full waste bags

Long or short term hire
Delivery 7 days a week
Fast & friendly service

Stowmarket 01449 615056

Mobile: 07770 452378

High Rd, Gt Finborough, Stowmarket, Suffolk
www.bargewellskiphire.com
Credit cards accepted

CHIMNEY SWEEP

ECO SWEEP CHIMNEY SERVICES

NEW POWER SWEEPING METHOD USED
FOR A MORE THOROUGH CHIMNEY CLEAN
THAN BRUSHES.

INDUSTRIAL HEPA FILTERED VACUUM.

FULLY INSURED.

INSURANCE RECOGNIZED CERTIFICATES ISSUED.

SPOTLESS, RELIABLE AND FRIENDLY SERVICE.

ALL CHIMNEYS, WOOD BURNERS, AGA, BOILER.

FLUES SWEEP.

GUILD OF MASTER SWEEPS CERTIFICATED MEMBER.



TEL. 01359 232335

THE BUGLE INTERVIEW

We start 2016 interviewing our County Councillor Mrs Jenny Antill.

How long have you been a councillor and what prompted you in the first place?

I was a Babergh councillor for eight years, and I have had two and a half at the County Council. When I was asked to be a councillor the idea was not entirely terrifying because my mother was a District Councillor in Stratford upon Avon, where I lived as a child, and I had some idea of what was required. I agreed because I love Suffolk, wanted to get more involved with the community and to change things for the better.

How would you describe what you do to someone thinking about becoming a local councillor?

There are two distinct parts of the role: the work with residents in the Division, and the work of running the council itself. I find the first part of the job the most rewarding because it is interesting to try to resolve issues and put things right for individuals and communities (but not always possible!). It is important to enjoy problem solving and also to like people, accepting that you must make yourself available much of the time. Running the council is like running any large organisation and I enjoy the complexities and challenges. I feel that politics does sometimes take too prominent a role however, and can get in the way of sensible decision making.

What were the highlights of your role in 2015 and what gave you most anxiety?

The highlight of my year was developing and delivering the County Council budget for 2015/16 in my role as Cabinet Member for Resources. I am very pleased that I had the opportunity to do this job, albeit for only a year. Things changed at the council however, and the general anxiety level rose, when the Leader, Mark Bee, decided to stand down. Unfortunately, following the leadership challenge, I felt that I could not work with the new regime and so decided not to continue in the Cabinet. This was quite difficult at the time, but now I feel that perhaps all has turned out for the best.

In the Division there have been a number of successes, small in themselves, but important for the communities involved. Probably the thing about which I am most proud is helping to resolve the long standing issue of public access to Wattisham Church. This involved much negotiation with officers and the diocese, and also finding a substantial sum to resolve a complex legal situation. It now looks as though the future of this little church, which also serves as a village hall for the community, is now secure. Everything to do with highways from potholes to heavy lorries gives me considerable anxiety, along with every other County Councillor I would imagine.

What do you believe are the main issues facing Suffolk County Council?

Funding, funding and funding, unfortunately. This affects our ability to deliver services right across the board. The focus has to remain on supporting the most vulnerable. Then there is 'devolution', although no one really seems to know what that means!

Can you say a few words about representing Bildeston?

As the second largest village of the eighteen that I represent, Bildeston is also one of the most interesting. People are welcoming, so much is going on, and there is a great community spirit. The village still maintains many of its assets, the school, the shop, pubs etc. In a rural area such as ours it is vital that these are preserved.

BASE GARAGE LTD

MONDAY – FRIDAY 7.30 – 6.00

SATURDAY 8.00 – 12.00

- TYRES
- EXHAUSTS
- PUNCTURES
- BATTERIES
- WHEELBALANCING
- AIR CONDITIONING
- LATEST DIAGNOSTIC EQUIPMENT
- WELDING TO MOT STANDARD
- SERVICING & ALL REPAIRS TO ALL MAKES OF CARS
& LIGHT VANS FLEET DRIVERS WELCOME
- MOT CLASS 4, 5 & 7
- COURTESY CAR AVAILABLE
- COLLECTION & DELIVERY SERVICE 5 MILES RADIUS
OF GREAT BRICETT
- WINTER CHECKS
- HOLIDAY CHECKS

£10 OFF!

*YOUR MOT WITH THIS
ADVERT*

LOWER FARM ROAD, GT BRICETT, IPSWICH IP7 7DR

01473 658987 / 01473 657704



Would you still like to join Upbeat Contemporary Choir Bildeston? Do you love to sing?

We had a very successful and encouraging evening together at Bildeston Primary School, talking about the new community choir and how it might work. Around 20 men and women have already enrolled and intend to be there when it begins properly on Monday February 22nd 2016 at Bildeston Primary School from 7.00-9.00pm.

In just 20 minutes Andrea taught us a song, we sang it in parts and it was exhilarating - not just to sing an upbeat song like that but to hear everyone else singing too. It is a choir for anyone in the community who wants to sing, whether you can read music or not, old and young, men, women and teenagers. If you would still like to join and were not able to come to the recent session, just ring Andrea on 01449 740601 or e-mail a.king00@btinternet.com for enrolment details.

STOP PRESS: Just heard we have been offered a grant to buy a Yamaha electric piano so that the choir can perform anywhere!



CLAY HILL CATTERY



EXCLUSIVELY FOR CATS

Clay Hill purpose built luxury upvc cattery was completed in October 2015. Built by the major supplier of upvc catteries to the RSPCA and Cat Protection across the UK it offers secure, hygienic, climate controlled boarding for your cat.

Run by caring, professional staff, our cattery offers a truly pampered 5-star haven for cats.

We will ensure your cat receives a stress free stay helping owners enjoy going on holiday having been reassured that their cat will receive the very best of care and attention.

- Spacious temperature controlled accommodation
- Open all year round
- Collection and drop off service available
- Ample parking spaces
- Fully Licensed by Babergh District Council

Visit our website for more information at www.clayhillcattery.co.uk or our Facebook page



Clay Hill Cattery

"Woodside", Clay Hill Lane,
Wattisham, Suffolk IP7 7JS

www.clayhillcattery.co.uk

email: info@clayhillcattery.co.uk

Tel: 01449 744966

WALL TO WALL BUILDERS (SUFFOLK) LIMITED

Experienced, Professional & Reliable

- Extensions
- New Builds
- Listed Buildings
- Loft Conversions
- Kitchens & Bathrooms
- All Renovation Work
& Repairs

Richard Bateson

M: 07799 114814

T: 01449 741510

richardbwtw@gmail.com

www.walltowallbuilders.co.uk

Stuart Walker

Decorating, Painting & Refurbishments



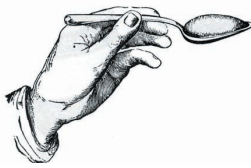
A locally based company offering an honest and reliable service

Painting - Decorating - Refurbishments - Repairs

All work considered indoors & out! Fully Insured & free quotations provided

Please contact Stuart on Tel: 07711 606464 or 01449 740387

Email: stuma1@hotmail.co.uk



Recipe of the Month

Pork and Honey Casserole



Ingredients

- 1 Tbsp Olive Oil
- 750g Pork Loin cut into cubes
- 225g Dried Haricot beans soaked overnight in cold water
- 1 Tbsp Clear Honey
- 600ml Chicken Stock
- 300ml Apple Juice
- Bouquet Garni
- 1 Onion peeled
- 4 Cloves
- 3 Carrots peeled and cut into 5cm lengths then into quarter wedges
- 2 Leeks Trimmed, washed and sliced
- 2 Celery Sticks
- 2 Tbsp Worcestershire Sauce
- 1 Tbsp Tomato Puree
- Salt and freshly ground black pepper

Method

1. Heat the oil in a large flameproof casserole dish or saucepan. Add the pork and cook until lightly brown
2. Drain the beans and add to the pork with the honey, stock, apple juice and bouquet garni. Stud the onion with the cloves and add to the casserole. Bring to the boil, cover closely with greaseproof paper and the lid and simmer for 1 hour, until the beans are just tender.
3. Add the carrots, leeks and celery with the Worcestershire sauce and tomato puree. Season to taste. Continue simmering for a further 15-30 minutes or until the beans are really tender. Remove the cloves from the onion and cut it into four. Return to the casserole. Discard the bouquet garni and cloves and serve hot with warm bread.

TOP TIP

To make a bouquet garni simply tie together four sprigs of fresh parsley, one sprig of fresh thyme and a bay leaf. It may help to hold them together if you sandwich the herbs between two sticks of celery and then tie with string. If you attach the other end of the string to the saucepan handle it is easy to fish out afterwards!!





Done & Dusted Cleaning Service

A professional, reliable business offering:

- **Domestic Cleaning – regular cleaning or one off spring cleans.**
- **Commercial Office cleaning.**
- **Ironing service – Collected and delivered back to your door**

Please call for a no obligation quotation:

Office 01449 258574/Mobile 07402 045572

BILDESTON COMMUNITY CYCLING

Feeling 'tired' after Christmas and the New Year?

Why not join our monthly Saturday morning Winter Warmer series?

WINTER WARMER 4

JOIN US FOR A RIDE OF ABOUT 25 MILES,
STARTING FROM THE MARKET PLACE
AT 9.30am, ON SATURDAY 9 JANUARY.
CAFE STOP HALFWAY. BACK ABOUT 12.30pm.

PUT IT IN THE DIARY NOW!

Warm clothing recommended. The ride will be mainly on quiet lanes, at an acceptable speed (no-one left behind!). Regret no unaccompanied children under 16.

JUST TURN UP; or for more information, contact Robin Weaver 741048

All Seasons marquees

Let us help you to make yours an event to remember

Modern Marquees in a range of sizes

Free no obligation site visit

Heating • Lighting • Furniture • Flooring
Dance Floors • Staging • Linings
Generators • Toilets

Tel Ipswich: 01473 559978

www.allseasonsmarquees.co.uk info@allseasonsmarquees.co.uk



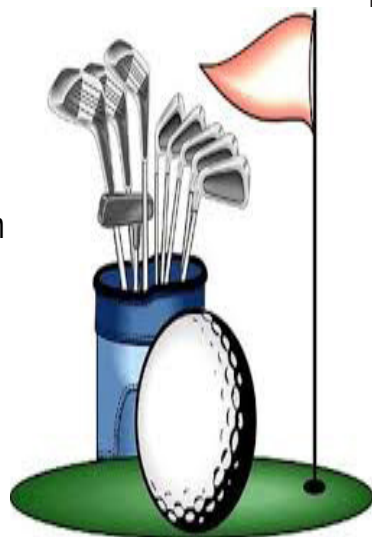
Old Joes Golf Club

Are you looking for somewhere fun, relaxed and affordable to come and learn or practice golf?

Here at Old Joes we have some amazing facilities available to all levels of golfer whether you are just starting out to the player looking for more intensive practice.

Our facilities include

- A 10 bay floodlit driving range
- Practice putting and chipping green with two practice bunkers
- a recently installed pro shop home to Nike Golf
- A custom fitting suite with state of the art launch monitor system
- Café with hot drinks available all year
- As well as our friendly, knowledgeable staff who are able to answer almost all of your golf queries



Golf Tuition is available please ask at the pro shop or give us a call for more details

Old Joes Golf Club, Joes Road, Cornard Tye, Great Cornard, Sudbury, CO10 0QB

Tel: 01787 374807

Email: info@patrickcollinsgolf.com

www.oldjoesgolfingrange.co.uk

BILDESTON ELECTRICAL

Rewires, Extensions, Board Changes or New Installations

Any Alterations to Existing Installations

(lights, sockets, etc.)

Contact Ian

01449 743664 or 07754 723685

- ❖ Home Maintenance
- ❖ Carpentry
- ❖ General Building Work
- ❖ Brickwork & Blockwork
- ❖ Stonework
- ❖ Hand Built Sheds
- ❖ Floor & Wall Tiling
- ❖ Paving & Patios
- ❖ Kitchens & Wardrobes
- ❖ Pergolas
- ❖ Carpentry
- ❖ Bespoke Fencing
- ❖ Property Maintenance
- ❖ Repairs
- ❖ Advice & Planning
- ❖ Shop & Office Fitting
- ❖ Renovation Work



Bob Buckle
Carpentry & Building Services

Bildeston - Suffolk.

For a prompt & reliable service.



01449 740275 or 07580 753020
Email: bobbuckle10@gmail.com

BILDESTON PARISH COUNCIL

DRAFT Minutes of the meeting of Bildeston Parish Council

held on 14th, December, 2015 in Chamberlin Hall at 7.45 pm

In attendance:

Councillors: A Guttridge (Chairman) P Bullen, D Dempsey, D Drury, A Hubbard and R Taylor

Also Present: District Councillor M Creffield, D Blackburn (Clerk)

Reverend Liz Law

C123/15/16 APOLOGIES FOR ABSENCE

Apologies had been received from Councillor R Lester and County Councillor Mrs J Antill.



C124/15/16 DECLARATIONS OF PECUNIARY AND NON-PECUNIARY INTERESTS

Councillor Guttridge declared a non-pecuniary interest as a member of Chamberlin Hall Management Committee. Councillors Drury and Taylor declared non-pecuniary interests by reason of being members of the Sportsfield Management Committee.

C125/15/16 DISPENSATIONS IN RESPECT OF PECUNIARY INTERESTS

There were none.

C126/15/16 MINUTES OF PREVIOUS MEETING

It was AGREED: That the minutes of the meeting held on 9th November, 2015 be signed by the Chairman as a correct record.

C127/15/16 POLICE REPORT

During the period 1st to 30th November 2015, there had been no crimes reported in the village.

C128/15/16 DISTRICT COUNCILLOR'S REPORT

Councillor M Creffield reported upon the following matters:

- Training provided to Members of Babergh District Council which encouraged them to promote the need for new residential development in order to meet national targets for the provision of more housing.
- Guidance which had been issued by the District Council on Community Led Village Plans and which had been circulated by the Clerk to Members of the Parish Council.
- Planning application - B/15/01433 Land East of Artiss Close and, Rotheram Road, Bildeston would be considered by the District Council's Planning Committee in January 2016 and that he would convey the views of the local community having received a copy of the Parish Council's observations.
- Planning consent had been granted to re-erect on the exterior of the Red Lion, the lions that had been part of the funnel of HMS Bildeston and donated to the village when it had been de-commissioned.

It was AGREED: That the Clerk sends the Parish Council's letter of objection with regard to Planning application B/15/01433, Land East of Artiss Close and, Rotheram Road, Bildeston to all members of the District Council's Planning Committee so that they have the opportunity to consider the Parish Council's grounds for objecting to the proposed development of 48 new homes.

C129/15/16 COUNTY COUNCILLOR'S REPORT

Councillor Mrs J Antill had submitted a written report on the following matters:

- It was anticipated that Suffolk County Council would have to find a further £72 million of savings over the following two financial years.
- There had been a delay in the roll out of the second phase of high speed broadband owing to problems with regard to complying with European Commission procurement procedures.
- The Chancellor's Autumn Statement had identified a different methodology for funding education which, it was anticipated, would provide higher per capita funding for children in education in Suffolk.

C130/15/16 ST MARY MAGDALENE CHURCH – KITCHEN AND WC PROJECT

The Reverend Liz Law submitted a request for financial assistance towards internal improvements to the Parish Church. The total costs of the project were £47,000 plus VAT, with the VAT being recoverable. Grants secured, fund-raising events and use of the church's reserves provided just over £45,000, leaving a shortfall in the region of £2,000. Members of the Parish Council discussed the request having regard to financial support provided to other bodies in previous years. Councillor Drury noted that greater use of the church by local groups, free of charge, could have an adverse effect upon the hire of the Sportsfield pavilion and Chamberlin Hall. However, the overall consensus of the meeting was that it was important to provide a basic level of amenities at the church through a kitchen and wc to encourage the continuing use of the church in the future.

It was AGREED (by 5 votes for, none against and 1 abstention): That £2,000 be awarded to the St Magdalene Church – Kitchen and WC Project to be funded from the Grants Reserve.

C131/15/16 TRAFFIC CALMING MEASURES AND OTHER HIGHWAYS ISSUES

There was a discussion about the alternatives provided by Suffolk County Council in terms of either oak, or white, gateway treatments for the village. It was noted that oak gateways could be painted at a later date, if there was a need to improve their visibility.

It was AGREED: That the County Council be notified of the Parish Council's wish to have oak gateways installed in the village.

It was noted that speed measuring devices had been installed in Barking. The position of the equipment on the "off side" of the road near to existing 30mph signs appeared to be contrary to advice previously received by Bildeston Parish Council over the siting of such equipment.

It was AGREED: That the Clerk contacts Barking Parish Council to establish the guidance that is has received regarding the deployment of Vehicle Activation System (VAS) equipment.

C132/15/16 VILLAGE AMENITIES AND OPEN SPACES

Councillor Drury reported that the fundraising dance held in aid of the Sportsfield at Chamberlin Hall had been successful with approximately 70 people attending.

Two proposed fundraising events for Chamberlin Hall had not been held. In particular, the cancellation of the dinner and dance had been unfortunate as there had been a late flurry of

interest in tickets after the event had been cancelled.

Notification had been received from Suffolk County Council that repairs would be undertaken to the footways along Chapel Street and Duke Street over a period of approximately 4 weeks between the hours of 8am and 4pm commencing on 4th January 2016. On street parking would be restricted to allow the repairs to be carried out.

C133/15/16 CLERK'S REPORT

The Clerk reported that the cracks in the skate park had been re-sealed and a RoSPA inspection of play areas would be conducted in the new year. The representatives of the developer in respect of B/15/01433 Land East of Artiss Close and, Rotheram Road, Bildeston had cancelled their briefing on 14th December and now proposed to attend on Monday, 11th January, 2016 at 7pm.

C134/15/16 RESPONSIBLE FINANCIAL OFFICER'S UPDATE AND AUTHORISATION OF PAYMENTS

It was AGREED:

- a. That the following payments be authorised:

Payee	Description	Budget Category	Amount (incl. VAT)
David Blackburn	Clerk's Pay	Salaries & Expenses	£173.09
Adrian Chinery	Grounds Maintenance	Salaries & Expenses	£177.52
Adrian Chinery	Expenses	Playgrounds & Open Spaces	£40.00
SCS Technaseal	Skate Park	Playgrounds & Open Spaces	£156.00
C. Goodchild	Grounds Maintenance	Playgrounds & Open Spaces	£480.00

(Note: Final item above to be funded 50/50 between general Fund and John Artiss Nature and Conservation Fund).

- b. That the following receipts be noted:

Payee	Description	Budget Category	Amount (incl. VAT)
Mrs C Buckledee	Burial Fees	Burial Fees	75.00

Members of the Parish Council considered the working arrangements of the Clerk in connection with the storage of Parish documents and use of computer equipment. The standard practices that were endorsed by the Suffolk Association of Local Councils in respect of meeting the expenses of clerks were considered.

It was AGREED:

- a. That the Clerk shall be entitled to receive a £4 per week home office allowance in respect of the performance of their duties and financial support with respect to the purchase of a dedicated laptop (or use of a shared laptop with the clerk's main employer);
- b. That the draft budget be used as the basis for budget setting in 2016/17, subject to inclusion of current balances for the general fund and reserves within the budget book; and

- c. That a trade account with Hadleigh Building Supplies be established.

C121/15/16 PLANNING APPLICATIONS

Planning Appendix A: Planning Applications Consultation

Reference	B/15/01554
Address	6, Chapel Street, Bildeston, IPSWICH, IP7 7EP
Proposal	Reduction of crown of 1 No. Ash tree by up to 25%, Tree Preservation Order BT78
Response	No objection

Planning Appendix B: Determined by Babergh District Council

Reference	B/15/01548
Address	Brook Farm Garage, High Street, Bildeston
Proposal	Remove Sycamore
Decision	Granted

Reference	B/15/01435
Address	21, High Street, Bildeston, IPSWICH, IP7 7EX
Proposal	Reduce crown of 1 No. Beech tree covered by Tree Preservation Order No. BT203
Decision	Granted

Reference	B/15/01436
Address	83, Wattisham Road, Bildeston, IPSWICH, IP7 7EG
Proposal	Erection of single-storey rear extension with raised decking to rear, and erection of side access steps to proposed utility (following demolition of existing single-storey flat roofed rear extension).
Decision	Granted

C136/15/16 PUBLIC SESSION

There were no issues raised.

C137/15/16 MATTERS TO BE BROUGHT TO THE ATTENTION OF THE COUNCIL

Councillor Guttridge referred to the festive event with carol singing and refreshments held on the Market Place on 13th December, and thanked everyone who had supported the event.

Whilst it was noted that the provision of the dog dispenser and provision of free bins had been welcomed by the local community, Councillor Dempsey referred to an inconsiderate minority of dog owners who did not use the facilities provided as shown by dog fouling which had occurred

against the front wall of the Crown and underneath the bin bag dispenser.

Councillor Drury reported that a street light on Rotheram Road had not been working for a long time. The County Council had indicated that it would be repaired by the end of the current week. It was noted that the tracking of reports raised could be undertaken via the County Council's website to check that action was being taken in response to matters reported by the public. Councillor Drury also reported that the Rotheram road sign was falling over. The Clerk would report this matter to the District Council.

Councillor Hubbard reported that a tree that had been blocking the Mill Lane footpath had been removed by the County Council. Local residents had raised their concerns about ivy growing into the road on Church Road near to the intersection of Duke Street and Chapel Street. A report had been received of a road accident that was nearly caused by a hedge overhanging the road (B1115) just outside the 30 mph speed limit heading towards Hitcham on the left hand side. The Clerk was requested to report the respective matters to the County Council for assessments to be made.

C138/15/16 CONFIDENTIAL BUSINESS

Following the exclusion of the public in accordance with the Public Bodies (Admissions to Meetings) Act 1960, Councillor Dempsey provided an update on Mr Morphew's bequest and indicated that further progress with regard to the availability of funds for the village now depended upon the decisions of the Kings' Pightle Management Committee.

The meeting closed at 9.35pm.

LOSS OF TREES!

Looking through the 'approved planning applications' section of the Parish Council minutes in recent editions of the Bugle, we seem to be losing a lot of trees from central Bildeston – 14 in the last couple of months!

There are few if any trees on public land in Bildeston, but the townscape benefits a great deal from those on private land. Try to picture Bildeston without the Surgery trees, The Crown yew tree, and the Christmas Hall trees, for instance.

Many of these trees were felled because of rot and disease, but we need to think now about the future of the townscape. Is this something, the planting of new trees on public land in Bildeston, our Parish Councillors might be able to consider?

We can help too. If you've got available space in your garden, why not consider planting a tree for the future? Good for the townscape, and wildlife too.

name and address supplied

THE OVER 60'S CHRISTMAS LUNCH

5th December once again saw Chamberlin Hall full of local residents right royally treated to a truly wonderful Christmas lunch. We would like to pay special tribute to Brenda and her wonderful team of volunteers who, yet again, helped to prepare, cook and serve over 70 meals with refreshments!

Special thanks are also due to Chris and Hayley and the staff at The Crown for providing a large part of the food. Thanks go to the girls from Miss Lesley's School of Performing Arts for the entertainment, ably supported by the comics Adrian and Dave! Thanks also to all those who provided raffle prizes.

Finally, thank you to all who came and made it such a joyous afternoon and helped kickstart the village Christmas celebrations.

We would like to say thank you to Brenda Salisbury and her helpers, for the lovely meal and entertainment given to the over 60s at Chamberlin Hall, it was very much appreciated.

Also many thanks to Chris and Haley from The Crown for all their help.

Ted and Betty Robinson and June Mann

Have you still not had
your flu jab?

www.nhs.uk/staywell

**STAY WELL
THIS WINTER**

Don't put it off.
Get your flu jab
straight away.



SUFFOLK PHARMACIES OPEN OVER CHRISTMAS

To find a list of all pharmacies open over the Christmas and New Year holiday please follow the link to NHS website below.

You will need to type in the address exactly as shown.

<https://www.england.nhs.uk/mids-east/wp-content/uploads/sites/7/2015/12/suffolk-pharm-times.pdf>



SOUTH SUFFOLK DECORATIVE & FINE ARTS SOCIETY

South Suffolk DFAS was founded in 1986 and has been a dynamic, welcoming society ever since. We offer a diverse lecture programme covering all aspects of the arts each year to members and their guests and always a warm welcome. Our members come from all over South Suffolk. We currently meet at The Quay Theatre in Sudbury on the third Tuesday afternoon from September to June. The one exception to this being December when we usually hold a Festive Lunch.

To give you a flavour of our programme here are some of the titles from recent past lectures: Prague, City of the Winter Queen; Wassily Kandinsky and Laura Ashley's Influence In The 1970s. **Our lectures for 2016 include Suffolk Churches & St Edmund, Temples, Tombs & Treasures : in search of the Queen of Sheba, and The Day Parliament Burned Down.** We offer various visits during the year when members are given the opportunity to gain experience of places not always open to the general public. We also hold Special Interest Mornings & Days when topics are investigated more deeply with lecturers. **Our next is in March – The Constable Lectures.** We hope this may have whetted your appetite to come and meet us and learn more about us.

Visit our website www.southsuffolksdfas.org.uk to see if there is a lecture coming up that appeals to you. We usually ask for a donation of £5 for guests, but if you bring the voucher below with you, you will be offered free entry to a lecture. You are even welcome to bring a friend too! (Two for the price of one !)

We look forward to seeing you very soon.

**ADMIT ONE PERSON TO
SOUTH SUFFOLK DFAS LECTURE
Valid until June 2016**

James Cartlidge MP



Will be holding a constituency surgery at
Boxford Village Hall

Stone St Rd, Boxford, Sudbury, Suffolk CO10 5NP

Friday 26th February 2pm-4pm



Please email helen.harris@parliament.uk or phone
020 7219 4875 to arrange an appointment

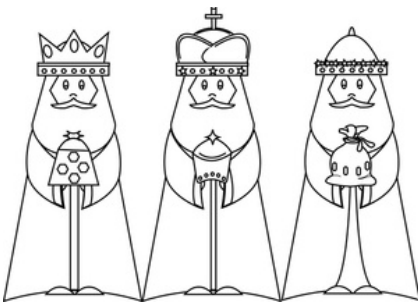
Strictly by appointment only



www.facebook.com/james4southsuffolk



[@jc4southsuffolk](https://twitter.com/jc4southsuffolk)



Messy Church for Epiphany Jan 10th

.. for drama or story and art and craft activities and tea. Usually parents come along with their children and take part - this is the best way to enjoy Messy Church. It is open to all and the older ones help the younger ones to enjoy the activities.

From **4pm to 5.30pm**

At Whatfield Salvation Army Hall

for Bildeston with Wattisham, Nedging, Naughton, Semer and Whatfield parishes

Any queries phone Rev Liz 01449 740085



Local Caring Independent Funeral Service

24 Hour Personal Service * Private Chapel * FREE Parking

www.andrewbingham.co.uk

01449 771666

The Nutshell, Milton Road South, Stowmarket, IP14 1EZ



Golden Charter
Funeral Plans



COMING SOON

**A New 100 CLUB
is to start with
Cash prizes every month**

For only £2 a month which is
payable 6 monthly or yearly
For further details and to register your
interest to join please ring:

Adrian (01449) 741253

Jane (01449) 740995

Jane (01449) 740846 or

David (01449) 674661

Lush Beauty Therapies

The Old Post Office, Hitcham. IP7 7NF

Tel; 01449 744414 or 07872856888

Offers waxing, tinting, spray tanning, microdermabrasion, gel nails,
mink eyelash extensions, massage and more.....
9am - 7.30pm weekdays & 9am - 1pm Saturdays.



Zor Boutique at Kersey Mill



Stunning jewellery, scarves,
bags, purses, clothing & shoes.
All at affordable prices.

Call: 07969525859

Web: www.zoronline.com

Email: zoronline.sales@gmail.com

Kersey Mill, Stone Street IP7 6DP
(Near Hadleigh)

THE FLOWER SHOP

AT KERSEY MILL

Local and Nationwide deliveries available

☎ 01473 805156

At The Flower Shop our team create all aspects of Floristry from bouquets, arrangements, baskets, wedding and sympathy flowers.

Our florists create beautiful arrangements just for you. We use fresh seasonal flowers, purchased daily in all bouquets, baskets and arrangements.

Visit The Flower Shop today, order online, call and collect or arrange a delivery.

🌐 www.theflowershopkm.com

✉ sales@theflowershopkm.com

The Flower Shop at Kersey Mill, Ipswich Suffolk IP7 6DP

D'ENZA



HAIR @ BEAUTY SALON
At "KERSEYMILL"

"January Offers"

New Year New you!

1: Detox Facial ~ Tri-Enzyme Resurfacing facial~

This facial focuses on Peeling away the years for a smoother and radiant skin. This treatment targets blemishes, uneven skin tone, superficial scarring and fine lines

Special Price of only £45 saving of £20

2: Detox after xmas ~ Body Toning Treatment

1 treatment special price of £25 with scalp massage provided

Or buy the kit yourself for home use for £75.37 & do 10 treatments yourself

2: Hair~ Wash, Cut & Style 50% off "Only for January"

Special Price of only £13.25

3: Men's Hair cuts only in January.

Special Price of only £8

The above offers can not be used with another offer.

Please telephone for more information or make a booking on: **01473 829069**

Email: emmaspraggons@yahoo.co.uk or visit us on Facebook or Twitter for our special offers.

For opening times & brochure please look at our website: www.denzahairandbeauty.com

CACI
NON SURGICAL SOLUTIONS

O.P.I

Elemis
spa-therapy

LEYTON HOUSE
PROFESSIONAL

Kersey Mill, Kersey, Ipswich, Suffolk, IP7 6DP.

A letter from Manor Road

Happy New Year to you all! January marks a full year for us at Bildeston now - we moved house twice and I was licensed as your parish priest at the beginning of February. Stuart was in plaster and unable to walk for most of the summer though he had a good try at bowls before all of that and quite enjoyed it. We had the B Natural Festival and all of the fund raising events from the church, the Produce Show and then the Boule-In several times over - all very enjoyable in their own way. We have met lots of lovely people and have settled into Bildeston life and times and are ready for a peaceful and happy 2016.

Moving house and having a husband who is wheelchair bound have been stressful things, but nothing compared with what has been happening across the world. Over Christmas we sang and read about Jesus the Prince of Peace born into our world and cynics might well ask what difference did that make? How much less peaceful our world feels as we watch the news each night. There is no easy answer to the terrorist troubles - if there were, our armies and politicians would have found it by now. But as I watched the aftermath of the bombing in Paris at the end of November I saw the sadness, the sympathy and the courage of the Parisians - not vengeful, not acting out of anger or spite, but with a longing for peace.

This is what Bishop Martin, our own bishop says:

'So why do people do good? When terrible things happen, natural or human, the astonishing thing is not that we all walk away and say "they deserved that" or "that's the way the world is." Instead people instinctively rush forward to help. Goodness is an instinctive response to evil. We have seen this in the refugee crisis; we have seen this in response to the Paris bombings. Indeed, we have seen it in communities' responses to the recent church lead thefts. We see it in our congregations when neighbours are in need. The instinct for good does not necessarily last, as human selfishness fights back, but we do see it in ourselves, and perhaps more clearly in others.'

Peace begins in each one of us - you and me. Pray for it, work for it, enjoy it in this lovely Suffolk village. May 2016 bring you lasting peace and joy and lots of fun as it's pantomime time this month - Oh yes it is!

Yours, Rev Liz

**BILDESTON w WATTISHAM,
WHATFIELD w SEMER, NEDGING & NAUGHTON**

SERVICE SCHEDULE – January 2016

January 2016 NB – Services in bold are Benefice Services			
Jan 3rd 2016 Christmas 2	11.00	Sunday Service	Bildeston
Jan 10th Epiphany	11.00am	Holy Communion	Bildeston
Jan 17th Week of Prayer for Christian Unity	10.45am	Morning Service - joint service	Bildeston Baptist Church
24th Jan Epiphany 3	11am	Benefice HC	Semer
31st Jan Epiphany 4	10.45am	Deanery HC	Hadleigh

Baptist Church, Duke Street, Bildeston

Jim Haley tel: 01449 740716 email: bildestonbc@gmail.com

Service every Sunday morning at 10:45

Lunch Club: at 12:30 on the first Wednesday of each month –

All are most welcome

Community Coffee Centre: Every Friday from 09:15 to 11:30

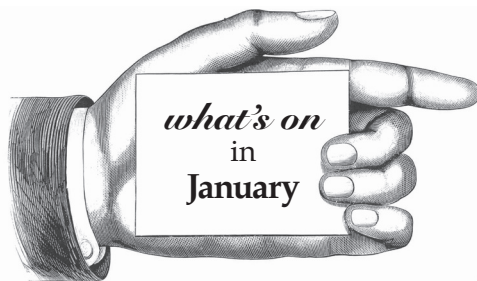
Enjoy meeting old and new friends at these events!

‘Craft it Together’ - Every Monday at 7pm.

Bring along your craft activities and join us for an informal, relaxed evening -
share ideas, gain new skills or just enjoy doing your own thing.

Cost **£1.50** - drinks provided. Contact **Elaine on 01449 740716** for information

‘Men’s Breakfast’ - last Saturday of each month at 8am



Bildeston Community Coffee Centre

Baptist Church 9:15-11:30 **Every Friday**

Lunch club

Baptist Church 12.15 for 12.30pm start.....**1st Wed every month**

Craft it Together

01449 740716 for details.....**Every Monday**

Strollers & Striders

Baptist Church Car Park 10:00 **Every Monday**

Baby & Toddler Group

Baptist Church 9:15-11:30 **Every Tuesday**

Winter Warmer Bike Ride 4

9.30am Market Square.....**Sat 9th**

Messy Church for Epiphany

Whatfield Salvation Army Hall 4.00 to 5.30pm.....**Sun 10th**

CHAPS Jack and the Beanstalk Panto

Chamberlin Hall**29th 7.30, 30th 7.30, 31st 2.00pm**

Men's Breakfast

Baptist Church 8:00am.....**Last Saturday of the Month**

More details on events inside.

Please tell us about your events in **February**

email: editor@bildestonbugle.co.uk



When you're finished with this Bugle please pass it on or recycle it.