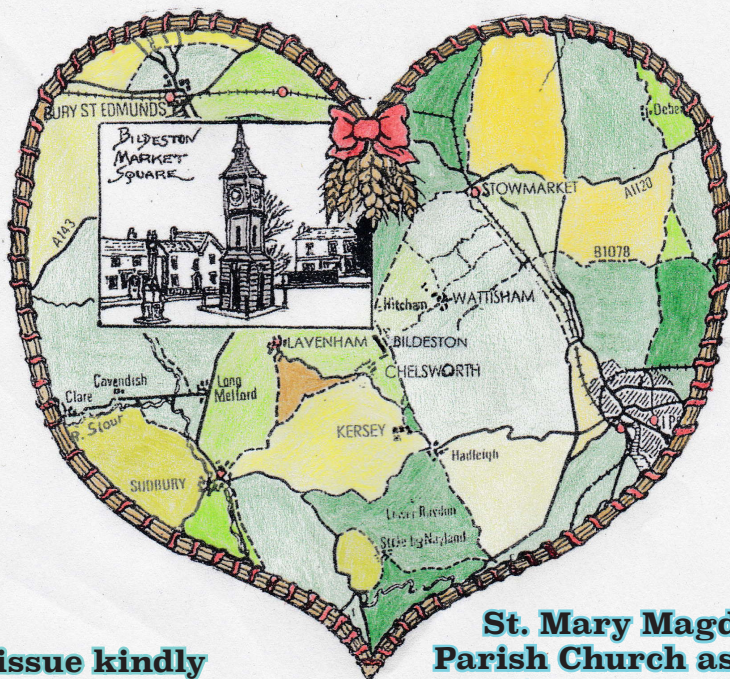


Issue number 302  
December 2015



This issue kindly  
sponsored by -

**St. Mary Magdalene  
Parish Church as a thank  
you for including all the  
church news and notices  
over the past year**



Saint Mary's Church, Bildeston, Suffolk.



**The village magazine produced for the people of Bildeston**



## BILDESTON BUGLE ADVERTISING AND FREE CONTRIBUTION INFORMATION

Our aim is to provide every resident in Bildeston with a magazine which provides information of local interest FREE OF CHARGE. To that end we are required to be efficient in the space we use to print free notices. We endeavour to include interesting items, announcements for events open to the general public for free and items of a charitable nature free of charge. Ongoing free announcements need to be reduced to minimum size or make a contribution towards printing costs. Please check with us before submitting your advert and ALWAYS provide us with all of your contact details in order for us to send a receipt.

email: [editor@bildestonbugle.co.uk](mailto:editor@bildestonbugle.co.uk)

### *Sponsor a 'Bugle' – £15 per issue*

includes a brief message of your choice on the cover of the magazine

### *Advertising Rates*

	1 issue	6 issues (15% disc)	12 issues (30% disc)	
1/4 page	£3.00	£15.00	£26.00	65mm W x 92mm H
1/2 page	£6.00	£30.00	£50.00	134mm W x 92mm H
Full page	£12.00	£60.00	£100.00	134mm W x 190mm H

#### THE SMALL PRINT

All adverts, payments and items are required by the 17<sup>th</sup> of the month for inclusion in the following month's issue. The earlier free contributions are received the greater the chance of inclusion. Please make cheques payable to Bildeston Bugle and send to:

The Editor, Bildeston Bugle, 14 Squirrells Mill Rd, Bildeston IP7 7DY

Receipts cannot be issued without your full postal address.

If we do not receive payment by the 17<sup>th</sup> of the month  
your advertisement may NOT be included

### **The Bildeston Bugle Management Team is:**

Alan Jacobs (Editor) - 14 Squirrells Mill Road, Bildeston IP7 7DY 01449 741645

Nan Dales (Treasurer) 142 High Street, Bildeston IP7 7EF 01449 741047

Tricia Baldwin (Advertising Revenue)

Angie Biddulph (Bugle Team Liaison)

Vic Ling (Assistant Editor)

Alison Sims (Marketing)

# ED'S COMMENT

December, the end of the year, the end of 2015, and what a year it has been! The year the Bugle celebrated its 25th birthday with a very special issue. Thank you to everyone who have let us know how much they liked it. We were even told that people responding to the Over 60s Christmas Lunch were phoning Brenda rather than cut out the form, ruin the page and spoil the special issue! Thanks, once again, to David Turner for supporting us in having someone else print the Bugle just for that one issue.

But other events made Bildeston special in 2015. There was the wonderful weekend in early September. On the same day as the very successful third BNatural Music Festival, the Tour of Britain cycle race came charging down Needham Road and took the 90 degree left turn towards Hadleigh at speeds that astonished us all. Even more surprising was the number of police motorbikes it took to control the race! An hour later the most amazing cavalcade of vintage motor cars processed through on a tour of East Anglia from Holland. For that weekend Bildeston was most certainly the place to be!

A General Election took place and returned a new MP for our area, James Cartledge, who took the opportunity to mention Bildeston in his maiden speech.

2015 saw the birth of the Keep Bildeston Beautiful campaign and also the establishment of the Neighbourhood Plan Working Group. Both were in response to the increase in proposals for building developments and it is good that the two have now combined with cross representation.

The need for more housing generally is undeniable. But the issue remains how much development in our village, where is the best place(s) and what can we do to existing services and infra-structure in order to cope with the increase and changes?

Change is a strange phenomena. We have, arguably, witnessed the greatest change in our lives over the last 30 years. It is that anxiety over the pace and breadth of change that affects us. On the one hand we are truly successful at coping with change, but on the other hand we fret and yearn for things that used to be. Amidst all this there was one historical event that straddles both concepts of change and longevity, Queen Elizabeth II became our longest serving monarch ever, having surpassed the 63 years of Queen Victoria. It underlines one of the aspects that enables us all to cope with change. That is the existence of some things that remain despite change, things that are familiar and therefore comforting. It could be famous landmarks, buildings, traditions, rituals and events. Whatever it takes, all of us, whilst managing to accept and assimilate the changes all around us, manage to find something to cling on to in order to keep one foot in the past, coping with the present and wondering about the future.

***Merry Christmas and a Happy New Year to you all from the Bugle team.***



# Lindsey Painting & Decorating Services

Professional & reliable interior and exterior home decor. Paint, Wallpaper Coving etc. Plus other allied services, Woodwork, tiling, laminate flooring. Curtain hanging, tracks/pelmets fitted.

Terry Peters

Home 01449 741483

Mob 07809 571790

Email [tac59@talktalk.net](mailto:tac59@talktalk.net)

Friendly Experienced  
Teacher offers  
Individual

**MATHS Tuition**

Speciality  
Confidence Building

**KS1 – KS3**

Call Colin Plummer on  
01449 736918  
for details and availability  
or email:  
[colinp52@btinternet.com](mailto:colinp52@btinternet.com)

*Angel Delights*

**Outside Caterer &  
Specialised Confectioner**

Weddings – Christenings – Funerals  
Birthday Parties - Barbecues - Dinner Parties

Tradional tea room now open  
at 85 high Street Hadleigh

**CAKES FOR ALL OCCASIONS**

Contact Helen  
01473 828191  
[info@angel-delights.com](mailto:info@angel-delights.com)  
[www.angel-delights.com](http://www.angel-delights.com)



# BILDESTON PRIMARY SCHOOL



On Sunday 8 November, children from our school joined in with the community for a Remembrance service at Bildeston Market Square. Four of our children read poems that they had written themselves. The children received such wonderful praise for their poems and local people mentioned how lovely it was to have the children involved in such an important day.



## ***Walk to Bildeston Memorial***

Children in Bee and Owl class walked up to the war memorial at Bildeston square and laid a wreath of poppies that they had made in school. The children all took part in a two minute silence on Remembrance Day.

## ***Children in Need "Bake Off"***

The children had a wonderful day on Friday whilst raising funds for Children in Need. They were able to bring their home made decorated cakes into school and these were entered into our "Bake Off" competition to win prizes and then sold at the end of the day to their parents and extended family. They also had the opportunity to dress in spots for the day to raise money. Thanks to the continued support of our pupils and parents we all managed to raise **£314** for such a wonderful cause.



## ***Friendly Tag Rugby Event***

A tag rugby tournament was held on Friday 13 November at our collaborated school, Whatfield Primary along with Elmsett Primary School in preparation for our tournament being held at Hadleigh High at the end of the month. Bildeston played fantastically and came first bringing home the cup! They were absolutely thrilled!

***Well done Bildeston!***

## ***Women in Science & Technology Day***

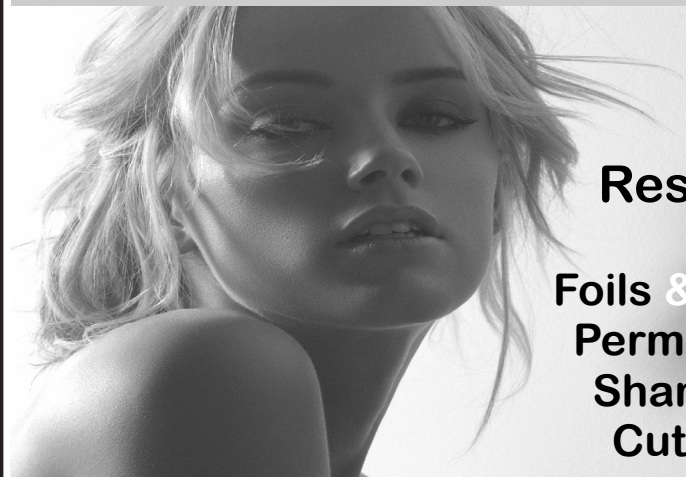


Our year 5 girls from our two collaborated schools, Bildeston & Whatfield were invited to the Old Buckenham Hall Women in Science and Technology day on Monday 16 November. The day was specifically aimed at girls in year 5 and was an exciting opportunity for them to compete in a variety of STEM subject challenges. The girls also had the opportunity to demonstrate their ability to work together to problem solve and complete tasks. Teams were judged and prizes awarded to the leaders in each activity – Bildeston won a team prize and shared their book prizes with the other team that was sent from our two schools – ***how sporting!!***

***Learning and Growing Together"***  
***Newberry Road, Bildeston, Ipswich, Suffolk, IP7 7EU***  
***Telephone: 01449 740269***  
***Website: [www.bildeston.suffolk.sch.uk](http://www.bildeston.suffolk.sch.uk)***

# *Studio 66*

*Ladies and Gents Hairdressers*



**Restyling**

**Foils & Highlights  
Perms & Colours  
Shampoo & Sets  
Cut & Blow Drys**

**Friendly Service from our Professional Team  
Tue & Wed Senior Citizens**

**\*\*\*special rates \*\*\***

**Opening Times Tues - Friday 9 - 5 pm Sat - 8 - 1pm**



**Tel 01449 740644**

**52A High St Bildeston IP7 7EA**

## *Bildeston Waytes 2015*

It is time to begin thinking ahead to the festive season and to remind you about this traditional carol extravaganza!

The "Waytes Carols" evening is an extremely popular Christmas event in Bildeston. An enthusiastic audience joins talented local musicians and singers for an evening of festive singing. Last year, we upheld the tradition admirably and as a result, were able to make a donation of £1000 to our chosen charity. Chamberlin Hall is the venue for this ever-popular evening - do come and join us, it is where Christmas begins! Please note the date for your diary:

**Tuesday 22<sup>nd</sup> December at 7.30pm**

Tickets will be available from early December from **Bank House Stores** or from the organisers. Any local musicians, especially instrumentalists, who are interested in taking part, would be very welcome! Please contact Nansi for further information.

**We look forward to seeing you there!**

**Nansi Browne** 01449 741003 / [nansi.browne@btinternet.com](mailto:nansi.browne@btinternet.com)

## **Stowmarket Chorale Christmas Concert**

This much-anticipated regular event takes place this year in Stowmarket URC at 7pm on Saturday 12 December and features Abbot's Hall Primary School Choir.

Tickets costing £9 for adults, £3 under 18s are available from choir members, Stowmarket Tourist Information at the Museum of East Anglian Life, and online at [www.stowmarketchorale.org.uk](http://www.stowmarketchorale.org.uk)

Thinking ahead, as a Christmas present with a difference, you might like to buy tickets for Stowmarket Chorale's next concert. This concert, at the prestigious venue The Apex at Bury St Edmunds, is an all-Mozart affair. The choir will be singing Mozart's Coronation Mass and Solemn Vespers, and Julian Farrell will be playing the glorious Clarinet Concerto, all accompanied by the talented Kingfisher Sinfonietta led by Beth Spendlove. Leslie Olive conducts. Put the date in your diary now: Saturday 7th May 2016 at 7.30pm.

Tickets are already available from [THEAPEX.CO.UK](http://THEAPEX.CO.UK) online or from the box office on 01284 758000. Early Bird offers apply until 31 December.



# Rediscover your world of **SOUND**

The multi-award winning Hearing Care Centre team are caring for all your hearing needs locally in:

## **Needham Market**

The Country Practice, Barking Road

## **Hadleigh**

The Health Centre, Market Place

## **Stowmarket**

StowHealth, Violet Hill Road

- Hearing tests ■
- Latest digital hearing aids ■
- Outstanding aftercare ■
- Ear wax removal ■
- Noise protection ■
- Tinnitus management ■
- Hearing aid repairs ■
- Home visits also available ■



Karen Finch RHAD FSHAA FRSA

**To book your appointment  
please call 01473 230330**

■ Award Winning ■ Family Run ■ Private ■ Independent ■ 20 Local Centres

[hearingcarecentre.co.uk](http://hearingcarecentre.co.uk)

# COUNTRYSIDE OBSERVER



October already gone and as I write this we have just experienced the warmest November day since records began. Walking in the balmy warm sunshine near Hitcham I became aware of a cheeping sound in a hedgerow. So I stopped still. Sure enough around 4-5 Pheasant chicks appeared from the scrub with their mum not far away. It's not the first time I have seen chicks this late. With the shooting season open, there is a real threat of them losing their mother or succumbing to a winter chill.

On my walks I have been pleased to see a number of English Partridges which had declined in numbers but are now gradually gaining numbers though never as prolific as the common French Partridge. The English or grey partridge is a rotund bird 11–13 inches long, brown-backed, with grey flanks and chest. The belly is white, usually marked with a large chestnut-brown horse-shoe mark in males, and many females. Hens lay up to twenty eggs in a ground nest. The nest is usually in the margin of a cereal field, most commonly winter wheat. The only major difference between the sexes is the so-called cross of Lorraine on the tertiary coverts of females—these being marked with two transverse bars, as opposed to the one in males. These are present after around 16 weeks of age when the birds have moulted into adult plumage. Young grey partridges are mostly yellow-brown and lack the distinctive face and underpart markings. The song is a harsh kieerr-ik, and when disturbed, like most game birds, it flies a short distance on rounded wings, often calling rick rick rick as it rises.

They are a seed-eating species, but the young in particular take insects as an essential protein supply. During the first 10 days of life, the young can only digest insects. The parents lead their chicks to the edges of cereal fields, where they can forage for insects. They are also a non migratory species, and form flocks outside the breeding season. Though common and not threatened, it appears to be declining in numbers in some areas of intensive cultivation probably due to a loss of breeding habitat and possibly food supplies. Their numbers have fallen by as much as 85% in the last 25 years. Efforts are being made in the UK by organisations such as the game and wildlife conservation trust to halt this decline by creating conservation headlands. In 1995, it was nominated a Biodiversity Action Plan (BAP) species. We have at least a pair if not more resident on Rougham airfield. It's the perfect environment a mixture of short grass with large areas of uncut grass allowing coverage from predators.

A recent radio show was talking about old sayings. Here are some to do with animals. **BEAT ABOUT THE BUSH** - When hunting birds some people would beat about the bush to drive them out. Others would than catch the birds. 'I won't beat about the bush' came to mean 'I will go straight to the point without any delay'.

**FROM THE HORSE'S MOUTH** - You can tell a horse's age by examining its teeth. A horse dealer may lie but you can always find out the truth 'from the horse's mouth'.

**GONE TO POT** - Any farm animal that had outlived its usefulness such would literally go to pot. It was cooked and eaten.

**SWAN SONG** -This comes from an old belief that swans, who are usually silent, burst into beautiful song when they are dying. **Mike Biddulph**

# COUSINS & SON BILDESTON LTD

available to carry out all your building requirements  
from  
**Renovations / Alterations / Extensions**  
to  
**General Repairs**

Please contact Paul for a free estimate  
**01449 744360 or 07876 244461**  
or email [paul.cousins268@btinternet.com](mailto:paul.cousins268@btinternet.com)

*Tired of Housework?*

## COUNTRY MAIDS

*A highly experienced home cleaning service*

Established over 24 years, COUNTRY MAIDS  
provides a service for all home cleaning from  
brass, ovens, windows, kitchens and polishing.

All materials and equipment provided.

No contracts.

For a free quote telephone:

**(01449) 741108**

## WANTED

Bricett Business wants  
gardener to cut 400 metres of  
thorn dwarf hedge 3/4 times a  
year , strim verges on a pond  
and business park entrance  
ditches embankments, and  
cut verges the grass with our  
ride on mower optional, we  
could that ourselves, all tools  
supplied. We also need to cut  
and tops out of Leylandi trees  
about 200 metres long and 16  
ft high.

**Call John Cooper on  
07733 321 197**



FAMILY GROCER

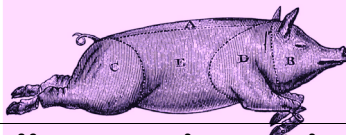
PROVISIONS

OFF LICENCE

# BANK HOUSE STORES

## and Post Office

Richard & Joan  
O'Sullivan



telephone  
01449 740403

### Shop locally - and avoid the stress!

As usual we will be open everyday except Christmas Day and right up to 7pm on Christmas Eve. There's no need to panic and get back in the car for those last few items. Just remember the problems parking last year - and all those rude people! Make it a more relaxed start to Christmas this year. Our Special Offers aren't "one day only" or "limited stock". This selection is available until 5<sup>th</sup> December, with even more to come for the rest of the year:

Kingsmill Soft White		Only £1
Bird's Eye Chicken Dippers	12-Pack	Only £1
Anchor Butter/Spreadable	Any 2 for £3	
Andrex Toilet Rolls	9-Pack	Only £3.50
Quality Street/Heroes	Big Tins	Only £5
Pepsi/Tango	2-litre bottles	Only £1
Thornton's Premium	Half Price	Only £5
Treviso Prosecco	Half Price	Only £6.49
Secretary Bird Merlot/SauvBlanc/Shiraz		Only £4.99
Famous Grouse/Standard Russian Vodka		Only £13.50
Jack Daniel's		Only £20
Foster's Lager	15-Pack	Only £10

.....plus many, many more.

**We are open from 7am to 7pm Mon-Sat (6.30 for the Post Office - 6 o'clock on Wednesdays) and 8.00 to 12.00 every Sunday and Bank Holidays.**

### USEFUL INFORMATION FOR CHRISTMAS

Here are the opening times for both the shop and Post Office over Christmas:

Christmas Eve: 7am until 7pm

Christmas Day: CLOSED

Sat 26<sup>th</sup>/ Sun 27<sup>th</sup>/ Mon 28<sup>th</sup>:

8am until 12pm

Tues 29<sup>th</sup>/Weds 30<sup>th</sup>/ Thurs 31<sup>st</sup>:

7am until 7pm

New Years Day:

8am until 12pm

Then back to normal!

The recommended last posting dates for Christmas:

BFPO: Static - 11<sup>th</sup> Dec; Operational - 27<sup>th</sup> Nov

Australia & New Zealand 10<sup>th</sup> December

USA & Canada 15<sup>th</sup> December

Ireland & Spain 16<sup>th</sup> December

France 17<sup>th</sup> December

UK 19<sup>th</sup> December

First Class 21<sup>st</sup> December

Other country's details available at the Post Office.

Try to post parcels a bit earlier to avoid the last-minute rush.

**Shop Locally - You need a jolly good reason not to!**



# KINGS HEAD

## & Brewery

Nigel, Susie, Ryan and Freya welcome you to the Kings Head and wish you all a very merry Christmas and happy New Year, here's what's going on...

- **Wednesday 16<sup>th</sup> Dec. Carol Singing from 7pm** lead by Bildeston Baptist Church. Followed by our usual **open mic/buskin' night** with free Christmas buffet.
- **Thursday 17<sup>th</sup> Dec. Charity Quiz Night starting at 8:30pm** with free Christmas buffet. To reserve a table please phone Sue or Nigel on 01449 741434. Many thanks to Octobers quiz teams who raised £100 for Joseph Orchard.
- **Christmas Eve.** We will be serving a Fish & Chip supper followed by free live music at **9pm** from the superb **Wired Ones**. Ian on guitar/vocals and Grinder on double bass will be playing a mix of lively cover tunes.
- **Sunday 27<sup>th</sup> Dec.** Free live music at **1pm** with **Kevin Nightingale** playing contemporary classical solo acoustic guitar to accompany your lunch; and then from **9pm** with **Rag Mama Rag**, a chance to see one of the best country blues acts about in a small and intimate venue.
- **New Years Eve.** Fantastic free live music from **9pm** as **Buzz** provide the very lively musical entertainment, get your dancing shoes on and come on down for a fun night.

Please see our other Bugle advert for Christmas opening...



# KINGS HEAD

## & Brewery

Nigel, Susie, Ryan and Freya welcome you to the Kings Head and wish you all a very merry Christmas & happy New Year.

- For a menu and to reserve a table for **Christmas Parties** please contact Sue or Nigel on 01449 741434.
- Christmas opening / food times:

Wed 16 <sup>th</sup> Dec	Open 6pm-12am / Carols, Open Mic & <b>Buffet</b>
Thurs 17 <sup>th</sup> Dec	Open 6pm-12am / Charity Quiz & <b>Buffet</b>
Christmas Eve	Open 4pm-12am / <b>fish &amp; chip supper 5-9pm</b> (free live music from 9pm “ <b>The Wired Ones</b> ”)
Christmas Day	Open 12pm-2pm / <b>open for drinks</b>
Boxing Day	Closed
Sun 27 <sup>th</sup> Dec	Open 12pm-12am / <b>menu 12-3pm &amp; 6-9pm</b> (free live music from 1pm <b>Kevin Nightingale</b> & free live music from 9pm “ <b>Rag Mama Rag</b> ”)
Mon 28 <sup>th</sup> Dec	Closed
New Years Eve	Open 4pm-2am / <b>open for drinks</b> (free live music from 9pm “ <b>Buzz</b> ”)
New Years Day	Open 12pm-10:30pm / <b>menu 12-2pm &amp; 6-8pm</b>
- Otherwise our normal opening times apply as follows:

Wednesday	Open 6pm-12am (open mic/buskin night)
Thursday	Open 6pm-11pm (bar games night)
Friday	Open 4pm-12am (full menu 6-9pm)
Saturday	Open 12pm-12am (full menu 12-2pm & 6-9pm)
Sunday	Open 12-10:30pm (roast & full menu 12-3pm)



## BILDESTON RANGERS FOOTBALL CLUB

Firstly I would, on behalf of everyone at the Club, congratulate all concerned with the 25 years of producing the Bildeston Bugle. An invaluable production which over these years has been a vital form of information and interest to those living in and associated with Bildeston.

Secondly here are the fixtures for the First Team for December, January and February, you will be made most welcome at any game you come along to and support the team. It has been a season thus far of varying results but a good Club/Team determination to continue to represent Bildeston to the best of our ability.

5/12/15 AFC Kesgrave and Willis Away

12/12/15 Boxford Rovers Away

19/12/15 Barham Athletic Home

26/12/15 Festive break

2/1/16 Bob Coleman Cup 3<sup>rd</sup> round (depending on

7/11/15)

9/1/16 Trimley Red devils Away

16/1/16 Stowupland Falcons Home

23/1/16 no fixture at present

30/1/16 Bartons Away

6/2/16 AFC Kesgrave and Willis Home

13/2/16 Bramford Road Old Boys Away

20/2/16 Sproughton Sports Home

27/2/16 Witnesham Wasps Away



I will close this report by wishing everyone a very Happy Christmas and New Year, from us all at Bildeston Rangers FC. Ruth Finbow (Secretary)

## BUGLE TREASURER

After ten years of tremendously loyal service 'Nan' Dales is giving up being the Bugle's treasurer. Nan has done a huge amount for the Bugle, as she has for other Bildeston organisations, over those ten years and the Bugle owes her a huge debt of gratitude. All the team at the Bugle send their sincerest thanks to her. It leaves the Bugle seeking someone willing to take over. As Nan says, it isn't a difficult job, just one meeting a month and keeping an eye on the books!

If anyone would like to take over as our treasurer do please get in touch with the editor on 01449 741645 for more information.

Ralph Lauren • Zoffany • Colefax & Fowler • Farrow & Ball • Designers Guild

Nina Campbell • Moon • Loirent • Malabar • Mulberry • Lorca • Chivasso • Voyage • Clarke & Clarke

Harlequin • Osborne & Little • G&J Baker • Jane Churchill • Cole & Son • Larsen • Jab • Kirkby House

# We amor design



Karndean  
Design Group



Interior Design | Designer Fabrics | Wallpaper & Paint  
Handmade Curtains, Blinds, Sofas & Chairs  
Manufactured locally in our Sudbury workshop  
Carpets | Wooden Flooring | Sisal Range | Reupholstery

16 FRIARS STREET SUDBURY CO10 2AA | 01787 880908



[www.amorinteriors.co.uk](http://www.amorinteriors.co.uk)



Threads • Vanessa Arbuthnott • Lewis & Wood • Kate Forman • Manuel Canovas

# BASE GARAGE LTD

**MONDAY – FRIDAY 7.30 – 6.00**

**SATURDAY 8.00 – 12.00**

- TYRES
- EXHAUSTS
- PUNCTURES
- BATTERIES
- WHEELBALANCING
- AIR CONDITIONING
- LATEST DIAGNOSTIC EQUIPMENT
- WELDING TO MOT STANDARD
- SERVICING & ALL REPAIRS TO ALL MAKES OF CARS  
& LIGHT VANS FLEET DRIVERS WELCOME
- MOT CLASS 4, 5 & 7
- COURTESY CAR AVAILABLE
- COLLECTION & DELIVERY SERVICE 5 MILES RADIUS  
OF GREAT BRICETT
- WINTER CHECKS
- HOLIDAY CHECKS

***£10 OFF!***

***YOUR MOT WITH THIS  
ADVERT***

**LOWER FARM ROAD, GT BRICETT, IPSWICH IP7 7DR**

**01473 658987 / 01473 657704**



# Aaron Clarke

---

## Accountants

Professional accountancy services  
with a personal touch

Accountancy

Taxation

Bookkeeping and VAT

Management Accounts

Payroll

Company Secretarial Services

Business Start-Up's

If you are struggling with your tax return or accounts...  
contact Luke Harvey or Ian Chambers  
for a free initial consultation

### Main Office

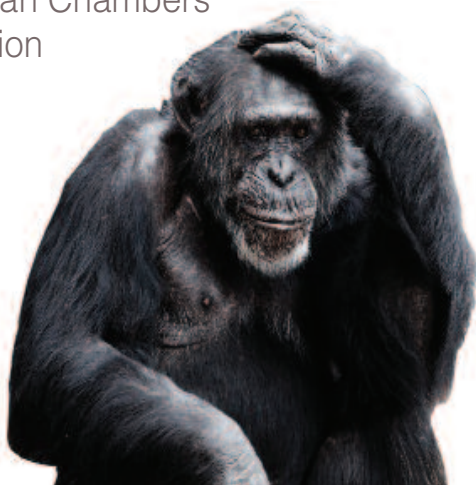
1 The Street  
Elmsett, Ipswich  
Suffolk IP7 6PA

Tel 01473 657763

Fax 01473 657764

[www.aaronclarke.co.uk](http://www.aaronclarke.co.uk)

[info@aaronclarke.co.uk](mailto:info@aaronclarke.co.uk)



## Pilates Classes Now Held at Kersey Mill

If you want to exercise both your body and mind as well as improving your sense of well being, strength, flexibility and mobility then I truly believe pilates is for you!

I am passionate about bringing the benefits of pilates to everyone and as a fully qualified teacher certified by Europe's largest professional pilates organisation I can help you improve muscle tone and core stability, building strength from the inside out, re-balancing the body and bringing it into correct alignment.

Please contact me if you wish to join a small matwork class and allow me and the Body Control Pilates method help you achieve your goals. Pilates can benefit anyone of any age and any level of fitness. I look forward to hearing from you.

**Call 07855 394 703 for more info.**

**[www.pilatesworks4u.com](http://www.pilatesworks4u.com)**

*Jenny  
x*



# Purple Daisy



*I offer a full range of both modern and traditional floral designs including:*

- Christmas wreaths
- Weddings
- Funeral Tributes
- Special Occasions

*I would be delighted to offer you a free consultation to discuss your floristry needs.*

Contact Davina on 01284 828006 / 07920 145418

## MEM'S CARE SERVICES

Care for you or your loved one

In your/ their own home.

Reliable, trustworthy and very caring lady

Lots of experience including

Dementia and end of life care.

All clients treated with the dignity and respect

They deserve at all times.

References available on request.

Call Meryl 07534254445 or 01449 741212

**Now Frying At Market Square  
Bildeston  
Friday's 11am – 1:30pm**



**Local Mobile  
Fish & Chip Shop**

**Functions Catered For  
Shows • Parties  
Weddings • etc.**

**Telephone  
01473 830771**

# HONEY BEE'S NURSERY

Hitcham Village Hall, Hitcham, IP7 7NE

## FOR CHILDREN AGED 2 – 5 YEARS

Open Mon, Wed, Fri 9.15a.m. – 12.15p.m. or 3.15p.m.

Tues, Thurs 9.15a.m. – 12.15p.m.

Early Drop Off – 8.30a.m. Lunch Club Daily until 1.15p.m.

Fee's @ 2.50 per hour (3 hour session = £7.50)

## 2 Indoor Rooms and Outdoor Areas

Ofsted Registered

Early Years Funding accepted for all 3 & 4 year olds

2 year old funding may also be available

*Free Taster Session Available*

Contact: Sharon Scarfe 01449 740764 (hall) 01449 740581 (home)

## Dentist

Paul Rolfe BDS

Veneers & Crowns in a  
single visit

Dental Implants

Family Dentistry

**Lavenham &  
Long Melford**

**01787 882722**

[www.paulrolfedental.co.uk](http://www.paulrolfedental.co.uk)



**Green Farm  
Vintage China  
Hire**



**A wide range of vintage china  
and glass to hire for any occasion.**

[carole.homer@btinternet.com](mailto:carole.homer@btinternet.com)  
**Tel: 01449 741498**

## CPH GARDEN SERVICES

All Jobs Considered, Large & Small

Grounds Maintenance

Garden Clearance

Patios, Decking & Pathways

Fencing

Painting & Decorating

Please contact us to discuss your needs  
and obtain a no obligation quotation.

Telephone: Paul - 01449 740020

Telephone: Chris - 01787 210536

Email: [chris.harman1990@gmail.com](mailto:chris.harman1990@gmail.com)

## P.D. ROSE.

Plumbing / Heating & General Building

- Plumbing & Heating Repairs
- Complete Bathrooms & Tiling
- Int. & Ext, Decorating
- Building Maintenance

Tel. 01787 211042

Mob. 07974 290697

3. Fen Street, Boxford, CO10 5HL

# FIREWOOD

## DRY SEASONED LOGS

Various Loads Available  
Or bags at £5.50 each

Call Carol Abbott on 01473 829130  
or 07768 795981

Tree, Garden Work and Driveways also  
Undertaken





# THE BUGLE INTERVIEW

This month we interview Hazel Bradshaw at Brook Farm Studio, our own arts centre.

## **How did you manage to set up the studio on the old garage site?**

With lots of determination, imagination and sheer effort. I had support and encouragement from my family, especially Steve, and friends. I had help from Taylor Made joinery who supplied me with several sheets of MDF to cover up the broken windows and Ian the local electrician was very helpful too.

## **What does a typical week look like at the studio?**

Monday we are shut. Tuesday I have a very popular painting class which started with one person who used to travel from Sudbury. She still comes along with several people from the village and surrounding areas. It's a great class full of conversation support and camaraderie. Wednesday I have a craft club, every week we do a different craft, we've covered everything from mosaic to silk painting. Thursday I hold a felting class but it's a class with no boundaries, printing, sewing and jewellery making have all taken place and for some reason we discuss and exchange recipes. Friday I have another painting class everyone is very supportive and encouraging to each other. In the afternoons when every one has gone I get on with my own work, sometimes a friend will pop in for a cuppa and a chat and occasionally people will pay me a visit to see what happens there.

## **What do you feel is the place of Brook Farm Studios in Bildeston?**

Brook Farm Studio is a place where people meet and friendships are made. People who live in the village have come to the studio for lessons and have met other people from the village in turn these people have started to go to other groups i.e the ladies club. I've had 3 new ladies to the village who have come to classes and met other people from the village, it's a place where friendships flourish. Brook Farm Studio is not pretentious in its approach to teaching art and creative crafts. I have taken my painting groups to 2 exhibitions at the Sainsbury Centre in Norwich, they were great fun and very interesting to my students who were exposed to works of art by famous artists. I've had exhibitions and sold paintings of my students work and solo exhibitions which have been very successful.

## **Tell us a bit about your own passion for art, who and what are your influences?**

I love creating whether it's painting working with fabric, porcelain or paper and since having the studio I feel my work is improving all the time. My drive from Hadleigh to Bildeston is very inspiring the colours and light of the landscape are sometimes breath taking. I love the use of colour. Working with people at the studio can be very inspirational. Going to exhibitions and seeing works by Grayson Perry, David Hockney, Mogdiliaania are great.

## **The site may be developed what does that mean for the studio and the classes?**

I'm very sad that the premises where Brook Farm Studio may well be developed but things change and what ever happens Brook Farm Studio will continue. The people who attend my classes are very important to me. What I do and the atmosphere I create can and does help people who need time to be creative. Also I have made a promise to them that the classes will continue even if means hiring a village hall to accommodate them then so be it. They are my life line and inspiration.

## Bildeston Ladies Club

At our November meeting, with Hazel's expert guidance, we all had a lot of fun and got very crafty! Even those who never normally lift a needle and thread completed the task and we each produced a beautiful, individual Christmas tree decoration. So, do please look out for them if you visit any of our homes over the festive period. Our thanks to Hazel for her patience and enthusiasm.

On December 3<sup>rd</sup> we will share our Christmas meal, catered as usual by Cheryl Chaplin. (Don't forget to bring your Secret Santa present)

In January we will take a break and we meet again on February 4<sup>th</sup> for an interesting and informative talk by Roger Kennell (the local History recorder for Hadleigh), on the subject of Our East Anglian Heritage – in bricks !! Please come along in the New Year and join in the fun.

We would like to take this opportunity to wish all in Bildeston a very Happy Christmas and peaceful New Year. Jo Silburn 740504 - Bookings Secretary



## **Bildeston with Wattisham Church invite you to the Over 60's Christmas Lunch**

**at Chamberlin Hall**

**on**

**Saturday 5<sup>th</sup> December**



**12noon for 12.30pm**

**Please fill in the form below and return to Brenda  
Salisbury at 6 Squirrells Mill Road or Eric Halls at  
110 High Street**

**Name.....**

**Address.....**

**Tel:**  
.....

**If you need a lift please tick the box**



**Any questions please contact Brenda on 740256**

# BARGEWELL SKIP HIRE

2 - 8 yard skips

1 ton waste bags

We also collect any full waste bags

Long or short term hire

Delivery 7 days a week

Fast & friendly service

**Stowmarket 01449 615056**

Mobile: 07770 452378

High Rd, Gt Finborough, Stowmarket, Suffolk

[www.bargewellskiphire.com](http://www.bargewellskiphire.com)

Credit cards accepted

## CHIMNEY SWEEP

### ECO SWEEP

#### CHIMNEY SERVICES

NEW POWER SWEEPING METHOD USED  
FOR A MORE THOROUGH CHIMNEY CLEAN  
THAN BRUSHES.

INDUSTRIAL HEPA FILTERED VACUUM.

FULLY INSURED.

INSURANCE RECOGNIZED CERTIFICATES ISSUED.

SPOTLESS, RELIABLE AND FRIENDLY SERVICE.

ALL CHIMNEYS, WOOD BURNERS, AGA, BOILER

FLUES SWEEP.

GUILD OF MASTER SWEEPS CERTIFICATED MEMBER.



**Power sweeping**



**TEL. 01359 232335**

# **LAXFIELD HOUSE NURSING HOME**

## **BRENT ELEIGH, Nr LAVENHAM, SUDBURY, SUFFOLK**

Situated in a quiet village location with beautiful gardens, offering residential and full nursing care for elderly people.

A highly trained team of nursing sisters and care staff provide excellent nursing care with kindness and compassion, ensuring privacy and dignity at all times.

**\* Long or short term respite care available \***

A warm welcome is always extended to all visitors



All rooms are well appointed with en-suite facilities.  
Nurse Call System, Passenger Lifts, Various Public Rooms

**This nursing home was established over 25 years ago by the current proprietor and family with ongoing input and management.**

**Enquiries to - Mrs J. Carne RGN, RM, (Matron)  
Mrs E. P. Knight RGN, RM, Mr N. Knight (Proprietors)**

**Telephone (01787) 247340 / 495**

**[enquiries@laxfieldhouse.co.uk](mailto:enquiries@laxfieldhouse.co.uk)  
[www.laxfieldhouse.co.uk](http://www.laxfieldhouse.co.uk)**



**Member of the Registered Nursing Home Association**

Workshops in December

# Brook Farm Studio



Website: [www.brookfarmstudio.co.uk](http://www.brookfarmstudio.co.uk)  
email: [brookfarmstudio@gmail.co.uk](mailto:brookfarmstudio@gmail.co.uk)

Sat 5th Painting for all 10am-1pm £8  
Sat 12th Creative Embroidery 10am-1.30pm  
£22.50  
Sat 12th Pottery 2pm-4.30pm £20  
Sat 19th Figurative Drawing 10am-1pm £10

## Regular Weekly Classes

Wednesdays Craft 10am-12.30pm £6  
Thursdays Felting & Textiles  
10am-12.30pm £8  
Fridays Painting 10am-12.30pm £8

**Booking essential call Hazel on 07432 138966 or 01473 823819**

**Would you still like to join Upbeat Contemporary  
Choir Bildeston? Do you love to sing?**

We had a very successful and encouraging evening together at Bildeston Primary School, talking about the new community choir and how it might work. Around 20 men and women have already enrolled and intend to be there when it begins properly on

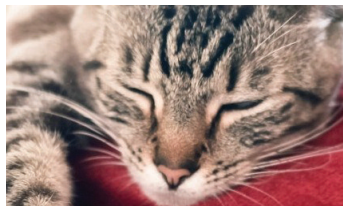
**Monday February 22nd 2016 at Bildeston Primary School  
from 7.00-9.00pm.**

In just 20 minutes Andrea taught us a song, we sang it in parts and it was exhilarating - not just to sing an upbeat song like that but to hear everyone else singing too. It is a choir for anyone in the community who wants to sing, whether you can read music or not, old and young, men, women and teenagers. If you would still like to join and were not able to come to the recent session, just ring Andrea on 01449 740601 or e-mail [a.king00@btinternet.com](mailto:a.king00@btinternet.com) for enrolment details.





# CLAY HILL *CATTERY*



## OPENING OCTOBER 2015

We are a brand new, purpose built upvc cattery offering high levels of care and secure, hygienic, luxury boarding for your cat.

Run by caring, professional staff, our cattery offers a truly pampered 5-star haven for cats.

We will ensure your cat receives a stress free stay helping owners enjoy going on holiday having been reassured that their cat will receive the very best of care and attention.

- Spacious temperature controlled accommodation
- Open all year round
- Collection and drop off service available
- Ample parking spaces

Visit our website for more information at [www.clayhillcattery.co.uk](http://www.clayhillcattery.co.uk) or our Facebook page

email: [info@clayhillcattery.co.uk](mailto:info@clayhillcattery.co.uk)

**Tel: 01449 744966**



# WALL TO WALL BUILDERS (SUFFOLK) LIMITED

Experienced, Professional & Reliable

- Extensions
- New Builds
- Listed Buildings
- Loft Conversions
- Kitchens & Bathrooms
- All Renovation Work  
& Repairs

Richard Bateson

M: 07799 114814

T: 01449 741510

[richardbwtw@gmail.com](mailto:richardbwtw@gmail.com)

[www.walltowallbuilders.co.uk](http://www.walltowallbuilders.co.uk)

## Stuart Walker

**Decorating, Painting & Refurbishments**



**A locally based company offering an honest and reliable service**

**Painting - Decorating - Refurbishments - Repairs**

**All work considered indoors & out! Fully Insured & free quotations provided**

Please contact Stuart on Tel: 07711 606464 or 01449 740387

Email: [stuma1@hotmail.co.uk](mailto:stuma1@hotmail.co.uk)

# *Recipe of the Month*

## **Pear and Ginger Souffle with Blackberries**

### Ingredients

- Butter for greasing
- Icing sugar for dusting
- 6 pears peeled and finely chopped
- 160g sugar
- 6 egg whites
- 1tsp fresh ginger peeled and chopped

### Method

1. Preheat the oven 190C fan 170C.
2. Lightly butter 4 ramekins and coat with a little icing sugar, then set aside in the fridge.
3. To make the pear puree, put the chopped pears and 100g of the sugar into a small pan and heat on a medium heat until the sugar is dissolved and the pears are soft.
4. Transfer to a food processor and blend until smooth, set aside.
5. In a mixing bowl whisk the egg whites slowly adding the remaining 60g sugar. Whisk until it is stiff and all sugar dissolved. Remove a small amount and put this in a separate bowl and fold in the chopped ginger and pear puree. Make sure it is well mixed in, then, fold this back into the whisked egg whites.
6. Spoon the mixture into the 4 ramekins, filling each one all the way to the top. Clear off any excess, level the top and clean around the edges.
7. Place in a preheated oven for 9 – 12 minutes until the soufflés have fully risen.
8. Serve immediately with a handful of fresh blackberries and a sprinkling of icing sugar.



# CHELSWORTH CHRISTMAS FAIR

**Friday 4 December 3pm to 8pm**

- Gifts, Produce and Confectionery
- Raffle for wonderful Christmas Hampers
- Tombola and Lucky Dip
- Christmas Cards, Wreaths and Decorations
- Jewellery, Knitwear, Candles
- Bulbs for Christmas and Spring
- Choirs and Carols
- Mulled Wine, Hot Toddy and Spiced Apple Juice, one **FREE** with every entrance ticket

**All Saints' Church, Chelsworth**  
£3 Entry (Children Free) Parking Free

**Jonathan Lambert**  
FINE JEWELLERS

**SPONSORS**  
**Jonathan Lambert Fine Jewellers**  
2 Borehamgate, Sudbury, Suffolk CO10 2EG  
Tel: 01787 881181  
[www.jonathanlambert.co.uk](http://www.jonathanlambert.co.uk)

## **BILDESTON COMMUNITY CYCLING**

Gain a bit of exercise 'credit' before the Christmas blow-out!  
Why not join our monthly Saturday morning Winter Warmer series?

# **WINTER WARMER 3**

JOIN US FOR A RIDE OF ABOUT 25 MILES,  
STARTING FROM THE MARKET PLACE  
AT 9.30am, ON SATURDAY 12 DECEMBER.  
CAFE STOP HALFWAY. BACK ABOUT 12.30pm.

### **PUT IT IN THE DIARY NOW!**

Warm clothing recommended. The ride will be mainly on quiet lanes,  
at an acceptable speed (no-one left behind!). Regret no  
unaccompanied children under 16.

JUST TURN UP; or for more information, contact Robin Weaver 741048

# All Seasons marquees

*Let us help you to make yours an event to remember*

Modern Marquees in a range of sizes

Free no obligation site visit

Heating • Lighting • Furniture • Flooring  
Dance Floors • Staging • Linings  
Generators • Toilets

Tel Ipswich: 01473 559978

[www.allseasonsmarquees.co.uk](http://www.allseasonsmarquees.co.uk) [info@allseasonsmarquees.co.uk](mailto:info@allseasonsmarquees.co.uk)





# Old Joes Golf Club

Are you looking for somewhere fun, relaxed and affordable to come and learn or practice golf?

Here at Old Joes we have some amazing facilities available to all levels of golfer whether you are just starting out to the player looking for more intensive practice.

Our facilities include

- A 10 bay floodlit driving range
- Practice putting and chipping green with two practice bunkers
- a recently installed pro shop home to Nike Golf
- A custom fitting suite with state of the art launch monitor system
- Café with hot drinks available all year
- As well as our friendly, knowledgeable staff who are able to answer almost all of your golf queries

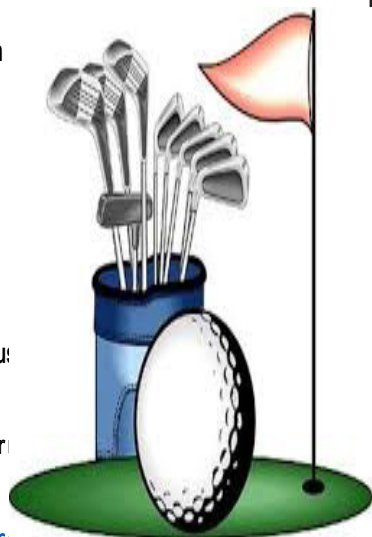
Golf Tuition is available please ask at the pro shop or give us

Old Joes Golf Club, Joes Road, Cornard Tye, Great Cornard

Tel: 01787 374887

Email: [info@patrickcollinsgolf.com](mailto:info@patrickcollinsgolf.com)

[www.oldjoesgolfrange.co.uk](http://www.oldjoesgolfrange.co.uk)



## PROPOSED WI FOR BILDESTON

Thank you to everyone who has expressed an interest in the proposed WI for Bildeston. We have decided to postpone the information evening until after the New Year. I will put a notice in the Bugle, probably the February edition, to let everyone know a date and venue of the information evening.

I need to apologise for the erroneous telephone number in last month's Bugle, it should have read 01449 740547, so please contact me on this number, or at [angiebiddulph@yahoo.co.uk](mailto:angiebiddulph@yahoo.co.uk), if you are interested in a WI for Bildeston.

# BILDESTON ELECTRICAL

Rewires, Extensions, Board Changes or New Installations

Any Alterations to Existing Installations

(lights, sockets, etc.)

Contact Ian

01449 743664 or 07754 723685

- ❖ Home Maintenance
- ❖ Carpentry
- ❖ General Building Work
- ❖ Brickwork & Blockwork
- ❖ Stonework
- ❖ Hand Built Sheds
- ❖ Floor & Wall Tiling
- ❖ Paving & Patios
- ❖ Kitchens & Wardrobes
- ❖ Pergolas
- ❖ Carpentry
- ❖ Bespoke Fencing
- ❖ Property Maintenance
- ❖ Repairs
- ❖ Advice & Planning
- ❖ Shop & Office Fitting
- ❖ Renovation Work



**Bob Buckle**  
Carpentry & Building Services

**Bildeston - Suffolk.**

**For a prompt & reliable service.**



**01449 740275 or 07580 753020**  
**Email: [bobbuckle10@gmail.com](mailto:bobbuckle10@gmail.com)**

# BILDESTON PARISH COUNCIL

## DRAFT Minutes of the meeting of Bildeston Parish Council

held on 9th, November, 2015 in Chamberlin Hall at 7.30 pm

### In attendance:

**Councillors:** R Taylor (Vice-Chairman in the Chair) D Drury, R Lester

**Also Present:** County Councillor Mrs J Antill, District Councillor M

Creefield, Three local residents, D Blackburn (Clerk)

### C106/15/16 APOLOGIES FOR ABSENCE

Apologies for absence had been received from Councillors P Bullen, D Dempsey and A Guttridge.

### C107/15/16 DECLARATIONS OF PECUNIARY AND NON-PECUNIARY INTERESTS

Councillors Lester and Taylor declared non-pecuniary interests by reason of being members of the Kings Pightle Management Committee and Sportsfield Management Committee. Councillor Drury declared a non-pecuniary as a member of the Sportsfield Management Committee and a pecuniary interest in planning application B/15/01433 - Land East of Artiss Close and Rotheram Road as her home was immediately adjacent to the site.

### C108/15/16 DISPENSATIONS IN RESPECT OF PECUNIARY INTERESTS

There were none.

### C109/15/16 MINUTES OF PREVIOUS MEETING

**It was AGREED:** That the minutes of the meeting held on 12th October, 2015 be signed by the Chair as a correct record.

### C110/15/16 POLICE REPORT

During the period 1st to 31st October 2015, it was noted that there had been no crimes reported in the village.

Councillor Lester referred to the recent resurgence of lead thefts from church roofs and requested that the Police include the Parish Church in their patrols of the village.

### C111/15/16 PLANNING APPLICATION - B/15/01433

#### LAND EAST OF ARTISS CLOSE AND ROTHERAM ROAD

Members of the Parish Council considered a fresh planning application in respect of the above. Copies of objections which had been submitted by local residents to the Planning Authority had been circulated prior to the meeting and a draft response was considered from Keep Bildeston Beautiful which also objected to the planning application.

The new application was essentially the same as the previous one, with some minor changes made in respect of the provision of more social housing units within the proposed development of 49 homes in conjunction with Orbit Homes, a small pedestrian footpath linking the development with Rotheram Road and some additional planting around the perimeter of the site.

Members of the Parish Council were not persuaded that the new planning application addressed the many substantive issues that had been raised by the Parish Council in objecting to the previous planning application for the site.

The Chair reported that the developer's agent had contacted the Parish Council prior to the meeting, seeking a meeting to answer any questions about the application and principally, its proposals in respect of the provision of social housing. It was understood that the application was due to be determined by the Planning Authority in January 2016.

### It was AGREED:

a. That the Parish Council objects to planning application B/15/01433 in respect of Land east of Artiss Close and Rotheram Road, Bildeston, with the objection being prepared in detail by the Clerk and lodged on the following main grounds:



- No demonstrable need for a development of this scale in Bildeston
  - Lack of integration of new housing estate with other residential development
  - Prominence of site within village
  - Inadequate connectivity with the rest of the village
  - Poor access to local amenities
  - No clear consideration of alternative sites
  - Unsubstantiated case for provision of significant amount of social housing
  - Harmful environmental impact
  - Inadequate drainage and foul surface drainage
  - Unreliable local consultation by developer
  - Contrary to views of the community expressed in Neighbourhood Planning consultation
- b. That the Chair of the Parish Council (or other representative of the Parish Council) attends presents Babergh District Council's Planning Committee in January 2016 to present the Parish Council's objection; and
- c. That the developer's representatives be invited to meet the Parish Council and local interested parties at Chamberlin Hall on Monday, 8th December, 2015 at 7.00pm, and the next Parish Council meeting be re-scheduled from 7.30pm to 8.00pm on that evening should the developer meeting take place.

*(Councillor Drury took no part in the discussion or voting on the above item of business).*

### **C112/15/16 PUBLIC SESSION**

In response to questions raised by a local resident, Mr Stuart Miller, with regard to street lighting in the village and the Parish Council's membership of the Suffolk Association of Local Councils (SALC) it was identified that:

- Councillor Taylor would investigate and report, the street lights which were remaining on all night in Chapel Street.
- The Clerk would be attending the Annual General Meeting of SALC later that week but that Mr Miller's offer to attend other SALC meetings and report back to the Parish Council be welcomed.

### **C113/15/16 DISTRICT COUNCILLOR'S REPORT**

Councillor M Creffield reported upon various matters including:

a. Planning application B/15/01110 - Redwick House, High Street, Bildeston, IPSWICH IP7 7EX: This was due to be considered by the Planning Authority on Wednesday 11th November, 2015 (the Parish Council had objected previously to this application (Minute C/94/15/16 refers), and revised proposals were due to be considered later in the meeting (Minute C/121/15/16 refers)); and

b. The lions signage made from the funnel of HMS Bildeston:

He had liaised with the Planning Officer about the removal of the lions from the exterior of the Red Lion Public House arising from the refurbishment of the property. The Planning Authority contended that planning permission had not previously been granted for them to be affixed to the building. An application form had been supplied to the proprietor and Councillor Creffield was hopeful that the application would be approved as the lions had been on the building for nearly twenty years.

### **C114/15/16 COUNTY COUNCILLOR'S REPORT**

Councillor Mrs J Antill reported upon various matters including:

a. Devolution: The submission of joint proposals to government by Norfolk and Suffolk councils and other public service providers, for greater devolution to the region to enable measures to be implemented to boost economic growth.

b. Education: There were signs of progress in the performance of schools in the county from recent performance data that had been collated by the County Council and four further schools had been awarded a rating of "Good" by Ofsted.

c. Fire and Rescue Service: A report was due to be considered by the County Council on 10th November, 2015, with public consultation likely to commence later in the month on reductions to the fire service in the County. Whilst this was driven by the need to save money, it was noted that the number of 999 calls for the fire service had fallen by 30% in the past ten years.

#### **C/115/15/16      TRAFFIC CALMING MEASURES AND OTHER HIGHWAY MATTERS**

Councillor Mrs J Antill referred to a request made by the County Council to the Parish Council to determine the colour of the posts for the gateways to the village. It was noted that former County Councillor Pembroke had allocated a ring-fenced sum which was believed to be £9,000 to help fund the provision of the gateways.

An enquiry had been received from Hitcham Parish Council concerning the use of the Speed Gun which was used in Bildeston, Hitcham and Great Finborough as it was considering speed monitoring in Hitcham.

**It was AGREED:** That the Clerk liaises with firstly, the County Council over the gateway treatments, and secondly, with Hitcham Parish Council over the Community Speedwatch speed gun.

#### **C116/15/16      VILLAGE EVENTS INCLUDING REMEMBRANCE AND THE CHRISTMAS LIGHTS SWITCH ON**

Councillor Taylor remarked upon the good attendance at the Remembrance service. Thanks were extended to the Parish Church for the service and the Baptist Church for the hospitality after the service. Councillor Lester reported that £491 had been raised through the collection for the Royal British legion.

Councillor Lester volunteered to give a reading as a representative of the Parish Council at the village carol service.

Arrangements for the Christmas lights switch on were discussed with Councillor Taylor agreeing to deal with the provision of the tree, lights and supply of gas; Councillor Drury to deal with entertainment and hospitality; and Councillor Lester with carol sheets and supply of kettle.

**It was AGREED:** That the Clerk produces an article for the next edition of "The Bugle" inviting parishioners to attend the Christmas Lights Switch on to be held in the Market Place on Sunday, 13th december, 2015 at 4.00pm.

#### **C117/15/16      SHARED GROUNDS MAINTENANCE ARRANGEMENTS**

Councillor Taylor reported that works were required in respect of the wildflower area and hedge at the church and wildflower meadow at Kings Pightle. Competitive quotes had been obtained for these services. Figures were still being finalised with respect to the annual cost of the shared grounds maintenance works for open spaces in the village.

**It was AGREED:**

a. That a quote in the sum of £400 + VAT be accepted from C. Goodchild for grounds maintenance works at the church and Kings Pightle; and

b. That £150 be allocated for cutting hedges at the church pending the appointment of a contractor to provide the service.

#### **C118/15/16      VILLAGE AMENITIES AND OPEN SPACES**

Councillor Drury reported that new doors had been installed at the Sportsfield pavilion and roof repairs were due to be undertaken shortly. Further to Minute C99/15/16, arrangements were in place for the fundraising event for the Sportsfield which would be held at Chamberlin Hall on Saturday, 14th November, 2015.

A report would be submitted to a forthcoming meeting on works required with regard to hedge planting and clearing the reed bed.



Councillor Taylor was joined by Members of the Parish Council in commending the team at “The Bugle” on the excellent 25th Anniversary commemorative edition which the Parish Council had been pleased to sponsor.

## **C119/15/16 CLERK’S REPORT**

The Clerk reported upon actions taken to implement the decisions of the previous meeting.

## **C120/15/16 RESPONSIBLE FINANCIAL OFFICER’S UPDATE AND AUTHORISATION OF PAYMENTS**

**It was AGREED:**

a. That the following payments be authorised:

<b>Payee</b>	<b>Description</b>	<b>Budget Category</b>	<b>Amount (incl. VAT)</b>
David Blackburn	Clerk’s Pay	Salaries & Expenses	£173.09
David Blackburn	Remembrance	Community Events	£50.00
Adrian Chinery	Grounds Maintenance	Salaries & Expenses	£275.30
Adrian Chinery	Expenses	Playgrounds & Open Spaces	£58.93
Tomlinson Groundcare	Grounds Maintenance	Playgrounds & Open Spaces	£365.94

(Note: All items of expenditure to be met from the General Fund).

b. That the following receipts be noted:

<b>Payee</b>	<b>Description</b>	<b>Budget Category</b>	<b>Amount (incl. VAT)</b>
Luxsigns Limited	Memorial Stone	Burial Fees	75.00
James Buckle	Remembrance	Community Events	50.00

c. That the Clerk liaises with the Grounds Maintenance Coordinator and Councillor Hubbard with a view to opening a trade account with Hadleigh Building Supplies in order to obtain a discount on the cost of supplies and record more accurately, for the purposes of the Parish Council’s accounts, the expenses incurred with respect to grounds maintenance.

## **C121/15/16 PLANNING APPLICATIONS**

### **Planning Appendix A: Planning Applications Consultation**

<b>Reference</b>	B/15/01474 & B/15/01475 (listed building consent)
<b>Address</b>	158, High Street, Bildeston, IPSWICH, IP7 7EF
<b>Proposal</b>	Erection of a two-storey rear extension, re-cladding of exterior and interior alterations.
<b>Response</b>	No objection subject to the views of the Conservation Officer

<b>Reference</b>	B/15/01435
<b>Address</b>	21 High Street, Bildeston, IPSWICH, IP7 7EX
<b>Proposal</b>	Reduce crown of 1 No. Beech tree covered by Tree Preservation Order No. BT 203
<b>Response</b>	No objection

<b>Reference</b>	B/15/01436
<b>Address</b>	83 Wattisham Road, Bildeston, IPSWICH, IP7 7EG
<b>Proposal</b>	Erection of single-storey rear extension with raised decking to rear, and erection of side access steps to proposed utility (following demolition of existing single-storey flat roofed rear extension)
<b>Response</b>	No objection

<b>Reference</b>	B/15/01110
<b>Address</b>	Redwick House, High Street, Bildeston, IPSWICH, IP7 7EX
<b>Proposal</b>	Erection of 1 No. two storey dwelling following demolition of existing buildings and structure
<b>Response</b>	Previous grounds for objection re-affirmed (Minute C94/15/16 refers)

### **Planning Appendix B: Determined by Babergh District Council**

<b>Reference</b>	B/15/01346
<b>Address</b>	Bildeston Health Centre, High Street, Bildeston, IPSWICH, IP7 7EX
<b>Proposal</b>	Works to 1 no. Beech tree (T2); Raise low branches of 1 no Acacia tree (T4); Reduce branches to 1 no. Acacia tree (T6; Remove 1 no. Ash tree (T8); Remove 1 no. Birch tree (T12), as stated in appendix one, description of works, covered by Group G2 of Tree Preservation Order WS207.
<b>Decision</b>	Granted

<b>Reference</b>	B/15/00626
<b>Address</b>	West View, High Street, Bildeston, IPSWICH, IP7 7EF
<b>Proposal</b>	Erection of 2 No. detached dwellings (following demolition of 1 No. bungalow), as amended by drawing numbers MGS/SK/01C, MGS/SK/04B, MGS/SK/20, MGS/SK/21, MGS/SK/22 and MGS/SK/23 received 30 September 2015
<b>Decision</b>	Granted

<b>Reference</b>	B/15/00783
<b>Address</b>	23 Duke Street, Bildeston, IPSWICH, IP7 7EW
<b>Proposal</b>	Insertion of Velux window into kitchen roof.
<b>Decision</b>	Granted

### **C122/15/16 MATTERS TO BE BROUGHT TO THE ATTENTION OF THE COUNCIL**

Further to Minute C103/15/16, Councillor Hubbard reported that the owner of the livestock in the field at Tankard Farm had removed the livestock for the present time and had indicated that he

would be prepared to consider re-locating the feeding station away from the route of the public footpath. These actions were welcomed by Members of the Parish Council. Councillor Hubbard provided details of the work of Sue Andrews in cataloguing Henry Morphew's collection. Members of the Parish Council recorded their thanks for the quality of work that had been undertaken.

The meeting closed at 9.45pm

### CLERK'S COLUMN

The Christmas lights will be switched on in the Market Place on Sunday, 13<sup>th</sup> December, 2015 at 4.00pm.

There will be mulled wine and mince pies plus a selection of Christmas carols.

Everyone is welcome!

David Blackburn  
On behalf of Bildeston Parish Council



**C.H.A.P.S**

*Presents*

**A PANTOMIME FOR ALL THE FAMILY**

**JACK AND THE BEANSTALK**  
at  
**Chamberlin Hall, Bildeston**

on

**Gala Night Friday 29<sup>th</sup> January at 7.30pm**

**£5 Adults/£3 Children**

**Saturday 30<sup>th</sup> January at 7.30pm**

**Sunday 31<sup>st</sup> January Matinee at 2pm**

**Friday 5<sup>th</sup> February at 7.30pm**

**Saturday 6<sup>th</sup> February Matinee at 2pm**

**£7 Adults/£5 Children**

**and**

**Saturday 6<sup>th</sup> February at 7.30pm**

**£12 Adults/£8 Children including food**

**Tickets on Sale from 6<sup>th</sup> January**

**Box Office (01449)740995**

Unbelievable as it may sound, 450\* vulnerable people in Suffolk die in the winter months from causes directly attributable to the cold and poor living conditions. The vast majority of individuals affected are over 65 years old.

In fact, this is just the tip of the iceberg – almost 30,000\*\* households in Suffolk currently live in fuel poverty. Many will suffer in silence during the coldest months, hidden from view, withdrawn from their community and surroundings.

Now in its 5<sup>th</sup> year and spearheaded by the Suffolk Community Foundation and in partnership with Age UK Suffolk and the East Anglian Daily Times, the Surviving Winter campaign rallies around these vulnerable older individuals offering them respite from the anxiety of managing fuel costs and the opportunity to stay warm and healthy during the winter. Incredibly and with thanks to the generosity of Suffolk pensioners, over £85,000 was raised in the winter of 2014-2015, helping over 300 vulnerable older households in the county.

Suffolk Community Foundation is now asking you to pledge your Winter Fuel Payment to help those desperately in need of extra support during the winter.

The money raised by the Surviving Winter campaign will be used in two ways:

- **Support payments to those who need additional financial help** to heat their homes properly, eat appropriately, stay active and keep in touch with their family and community. The payments will be distributed in partnership with Age UK Suffolk.
- **Grants to local charities and groups with a track record** of looking after older, vulnerable people and ensuring their continued support throughout the winter months.

This truly is an extraordinarily worthwhile campaign, so please.....

**IF YOU DON'T NEED IT, PLEASE DONATE IT!!**

To donate online visit [www.justgiving.com/suffolksurvivingwinter](http://www.justgiving.com/suffolksurvivingwinter)

To donate by card please call us on 01473 602602.

Please send cheques, made payable to

**Suffolk Community Foundation** and send to  
Surviving Winter Appeal, Suffolk Community Foundation, The Old Barns,  
Peninsula Business Centre,  
Wherstead, Ipswich, Suffolk IP9 2BB

To claim please contact Age UK Suffolk on 01473 359911

\*Public Health England 2012/13

\*\*Office for National Statistics



**SUFFOLK**  
Community  
Foundation

Charity Reg. no. 1109453  
Company Ref. no: 05369725



## Six Acre Productions

Six Acre Productions are proud to announce that we made £816 for the Suffolk Community Foundation during our production of "Make Do and Mend" written by Tom Hitchcock. The run of shows were a great success as we performed to full houses for four nights during September at Manor Farm, Semer.

We are pleased to announce that we will be back next year with a new Murder Mystery Show written by the group in July, followed by "Funny Money" a comedy farce by Ray Cooney in September. Check out our website on [www.sixacreproductions.co.uk](http://www.sixacreproductions.co.uk) or find us on Facebook and follow us on Twitter.

We would like to thank our sponsors, advertisers and audiences for all their support this year and we look forward to entertaining you all in the coming year. We wish you all a Merry Christmas and a Happy New Year.



## HOT MAMAS ARE BILDESTON'S WINNERS!

The Hot Mamas journey to the Ipswich Has Got Talent final came to an end on Friday 13th; unlucky for some - sadly they didn't leave the competition with the winning title but they have achieved so much and enjoyed the experience which is one they will all never forget!

After performing, Hayley Hynard from Bildeston said, "Standing back stage I was so nervous but when we heard our names and walked onto the stage hearing all the cheers from families and friends it was amazing and I enjoyed every second". Caroline Gage from Monks Eleigh said of the experience "I think we entertained with a capital 'E' although we may not have won, there is no greater prize than having the best time ever and putting smiles on the audiences faces". Bildeston resident Rebecca Hiscock said "All the acts were fantastic and congratulations to singer Tia B, a worthy winner".

Well Done Hot Mamas! You will always be Bildeston's winners and we wish you success on wherever your Hot Mama journey takes you next!

[Landscape and Management Committee](#)

# COMING SOON

**A New 100 CLUB**  
**is to start with**  
**Cash prizes every month**

For only £2 a month which is  
payable 6 monthly or yearly  
For further details and to register your  
interest to join please ring:

Adrian (01449) 741253

June (01449) 740995

Jane (01449) 740846 or

David (01449) 674661





# Epiphany Messy Church

## The Kings come to Whatfield!

### January 10th

We'll celebrate the arrival of the wise men (and women!) to the nativity stable with royal crafts and a royal tea.

Usually parents come along with their children and take part - this is the best way to enjoy Messy Church. It is open to all, and the older ones help the younger ones to enjoy the activities. Wear a crown or a cloak if you'd like to!

From **4pm to 5.30pm**

## At Whatfield Salvation Army Hall

for Bildeston with Wattisham, Nedging, Naughton, Semer and Whatfield parishes

Any queries phone Rev Liz 01449 740058

### LUNCH CLUB

How often do you wish you didn't have to cook lunch? Well, on the 1st Wednesday of every month you don't need to! Come down to the Baptist Church Lounge around 12.15pm (for 12.30 start) and enjoy a freshly cooked, 2 course meal, with mints and tea or coffee afterwards. And the price, only £2.50. No, it's not a typo error it really only costs £2.50. There's no better value for money in Suffolk!

If you are new to the village or have lived here all your life you will be guaranteed a warm welcome and if you aren't able to walk down the Duke Street hill (and up again, which may be the problem) there are people around who can give you a lift. The extra special Christmas Lunch is on Wednesday 2nd December and if you would like to come to that one, then we ask you to ring Sue on 01449 744360 to confirm a place. On other Lunch Club dates just turn up.

**CHAMBERLIN HALL, BILDESTON**

**Proudly Presents**



**A Christmas  
Dinner & Dance  
At Chamberlin Hall  
Saturday December 12<sup>th</sup> 2015  
7pm for 7.30pm  
Music by Craig Catchpole  
Choice of 3 course meal  
by Chaplin Catering  
£28 per person**

**For a great night out  
Contact: Adrian Chinery on (01449) 741253**

## **Lush Beauty Therapies**

**The Old Post Office, Hitcham. IP7 7NF  
Tel; 01449 744414 or 07872856888**

Offers waxing, tinting, spray tanning, microdermabrasion, gel nails,  
mink eyelash extensions, massage and more.....  
9am - 7.30pm weekdays & 9am - 1pm Saturdays.



# Zor Boutique at Kersey Mill



Stunning jewellery, scarves,  
bags, purses, clothing & shoes.  
All at affordable prices.

Call: 07969525859

Web: [www.zoronline.com](http://www.zoronline.com)

Email: [zoronline.sales@gmail.com](mailto:zoronline.sales@gmail.com)

Kersey Mill, Stone Street IP7 6DP  
(Near Hadleigh)

## THE FLOWER SHOP

AT KERSEY MILL

*Local and Nationwide deliveries available*

☎ 01473 805156

*At The Flower Shop our team create all aspects of Floristry from bouquets, arrangements, baskets, wedding and sympathy flowers.*

*Our florists create beautiful arrangements just for you. We use fresh seasonal flowers, purchased daily in all bouquets, baskets and arrangements.*

*Visit The Flower Shop today, order online, call and collect or arrange a delivery.*

 [www.theflowershopkm.com](http://www.theflowershopkm.com)

 [sales@theflowershopkm.com](mailto:sales@theflowershopkm.com)

*The Flower Shop at Kersey Mill, Ipswich Suffolk IP7 6DP*



D'ENZA



HAIR & BEAUTY SALON

At "KERSEY MILL"

## *"December Offers"*

Don't Forget **Christmas** is around the corner we do **Gift Vouchers** for amount or treatment if you would like something extra **special for a gift!**

1: Elemis 1 hour Skin Specific Facial with a free Back, Neck & shoulder massage

**Special Price of only £39**

2: Hair up or Styled with GHD's for those Xmas parties

**Special Price of only £20**

3: Hair~ Wash, Cut & Style 30% off

**Special Price of only £18.55**

4: Men Hair cuts only in December.

**Special Price of only £8**

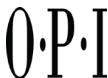
**December bookings are already very busy. Please book in advance so you are not disappointed.**

The above offers can not be used with another offer.

Please telephone for more information or make a booking on: **01473 829069**

Email: [emmaspraggon@yahoo.co.uk](mailto:emmaspraggon@yahoo.co.uk) or visit us on Facebook or Twitter for our special offers.

For opening times & brochure please look at our website: [www.denzahairandbeauty.com](http://www.denzahairandbeauty.com)



## *A letter from Manor Road*

**Let me introduce you to Posada** - a Spanish word that means 'inn', and is also the title for a Mexican Advent custom in which two young people represented Mary and Joseph and travelled from house to house in their village to proclaim the imminent arrival of Jesus.

The idea has been updated so that nativity figures travel round from place to place, brought to you by friend or neighbour, staying at a different house every night during Advent. Mary and Joseph's journey round the houses reminds us to make room for Jesus in our lives, homes and communities.



Stuart has made a set of Mary and Joseph figures to travel around each village during Advent. Do look out for them to come your way and offer them hospitality on their journey. They travel with a little prayer, which you might like to read as you hand them on when

they have visited your home. You might like to add a comment in their travel journey too. They set off from Bildeston Church on Advent Sunday, 29th November. And if you have them on Christmas Eve it would be good if you could take them to your village church for the service.

May God Bless you with joy and peace this Christmas, *Yours, Rev Liz*



**Local Caring Independent Funeral Service**

24 Hour Personal Service \* Private Chapel \* FREE Parking

[www.andrewbingham.co.uk](http://www.andrewbingham.co.uk)

**01449 771666**

The Nutshell, Milton Road South, Stowmarket, IP14 1EZ



**Golden Charter**  
Funeral Plans





**BILDESTON w WATTISHAM,  
WHATFIELD w SEMER, NEDGING & NAUGHTON**

**SERVICE SCHEDULE – December 2015**

<b>December 2015</b>		<b>NB – Services in bold are Benefice Services</b>	
Dec 6th Advent 2	11.00	Sunday Service	Bildeston
Dec 13th Advent 3	11.00am	Holy Communion	Bildeston
Dec 20th Advent 4	6.30pm	Carol Service	Bildeston
Dec. 24 Christmas Eve	4.00pm	Crib Service	Bildeston
	11.30pm	Midnight Mass	Bildeston
Dec 25th Christmas Day	9.30am	Family Communion	Semer
	11.00am	Family Service	Bildeston
<b>Dec 27th 1st of Christmas</b>	<b>11am</b>	<b>Benefice HC</b>	<b>Naughton</b>

## Baptist Church, Duke Street, Bildeston

**Jim Haley tel: 01449 740716 email: bildestonbc@gmail.com**

**Service every Sunday morning at 10:45**

**Lunch Club: at 12:30 on the first Wednesday of each month –**

All are most welcome

**Community Coffee Centre: Every Friday from 09:15 to 11:30**

Enjoy meeting old and new friends at these events!

**‘Craft it Together’ - Every Monday at 7pm.**

Bring along your craft activities and join us for an informal, relaxed evening -  
share ideas, gain new skills or just enjoy doing your own thing.

Cost **£1.50** - drinks provided. Contact **Elaine on 01449 740716** for information

**‘Men’s Breakfast’ - last Saturday of each month at 8am**



**Bildeston Community Coffee Centre**

Baptist Church 9:15-11:30 ..... **Every Friday**

**Lunch club**

Baptist Church 12.15 for 12.30pm start.....**1st Wed every month**

**Craft it Together**

01449 740716 for details.....**Every Monday**

**Strollers & Striders**

Baptist Church Car Park 10:00 ..... **Every Monday**

**Baby & Toddler Group**

Baptist Church 9:15-11:30 ..... **Every Tuesday**

**Ladies Club**

7.45pm Christmas Meal.....**Thurs 3rd**

**Over 60s Christmas Lunch**

Chamberlin Hall 12 noon for 12.30.....**Sat 5th**

**Christmas Dinner & Dance**

Chamberlin Hall 7.00 for 7.30pm.....**Sat 12th**

**Winter Warmer Bike Ride 3**

9.30am Market Square.....**Sat 12th**

**Village Carol Service**

St Mary Magdalene Church 6.30pm.....**Sunday 20th**

**Waytes Carols**

Chamberlin Hall 7.30pm.....**Tuesday 22nd**

**Men's Breakfast**

Baptist Church 8:00am.....**Last Saturday of the Month**

*More details on events inside.*

Please tell us about your events in **January**

email: [editor@bildestonbugle.co.uk](mailto:editor@bildestonbugle.co.uk)



When you're finished with this Bugle please pass it on or recycle it.