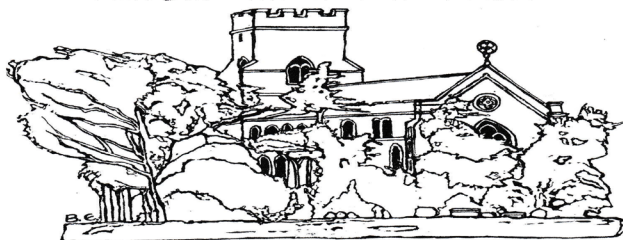


**This issue kindly
sponsored by -**

**Dot and Robin
Sidgwick**



Saint Mary's Church, Bildeston, Suffolk.

The village magazine produced for the people of Bildeston



BILDESTON BUGLE ADVERTISING AND FREE CONTRIBUTION INFORMATION

Our aim is to provide every resident in Bildeston with a magazine which provides information of local interest FREE OF CHARGE. To that end we are required to be efficient in the space we use to print free notices. We endeavour to include interesting items, announcements for events open to the general public for free and items of a charitable nature free of charge. Ongoing free announcements need to be reduced to minimum size or make a contribution towards printing costs. Please check with us before submitting your advert and ALWAYS provide us with all of your contact details in order for us to send a receipt.

email: editor@bildestonbugle.co.uk

Sponsor a 'Bugle' – £15 per issue

includes a brief message of your choice on the cover of the magazine

Advertising Rates

	1 issue	6 issues (15% disc)	12 issues (30% disc)	
1/4 page	£3.00	£15.00	£26.00	65mm W x 92mm H
1/2 page	£6.00	£30.00	£50.00	134mm W x 92mm H
Full page	£12.00	£60.00	£100.00	134mm W x 190mm H

THE SMALL PRINT

All adverts, payments and items are required by the 17th of the month for inclusion in the following month's issue. The earlier free contributions are received the greater the chance of inclusion. Please make cheques payable to Bildeston Bugle and send to:

The Editor, Bildeston Bugle, 14 Squirrells Mill Rd, Bildeston IP7 7DY

Receipts cannot be issued without your full postal address.

If we do not receive payment by the 17th of the month
your advertisement may NOT be included

The Bildeston Bugle Management Team is:

Alan Jacobs (Editor) - 14 Squirrells Mill Road, Bildeston IP7 7DY 01449 741645

Nan Dales (Treasurer) 142 High Street, Bildeston IP7 7EF 01449 741047

Tricia Baldwin (Advertising Revenue)

Angie Biddulph (Bugle Team Liaison)

Vic Ling (Assistant Editor)

Alison Sims (Marketing)

ED'S COMMENT

There are so many of you who enjoy Mike's regular piece in The Bugle as our 'Countryside Observer'. His thoughts as he travels around our local area, our county and sometimes further afield, are much appreciated. As a pilot Mike has the wonderful opportunity and privilege to see things from a perspective not available to most. A real 'bird's eye' view of things. This month he again mentions how he was struck by the beauty of the scene that was laid out below him recently in 'the Brett Valley that Bildeston sits in, with the river meandering along its western side'. His poetic words, not mine!

Flying at 5000 feet (is altitude still measured in imperial?) it must be so tranquil, peaceful and picturesque. It must provide one of those moments when all the world's troubles seem so far away and unreal. Yet as we read the latest thoughts from our Countryside Observer we are trying to come to terms with yet another atrocity involving innocent people being slaughtered in the most horrific of circumstances in Tunisia. The timing was dreadful in being so close to the tenth anniversary of the London underground and bus bombings in July 2005. What kind of world do we live in where lying sunbathing on a beach in a popular holiday destination in front of your hotel puts you in mortal danger?

We sometimes question why the news media, when reporting on any awful tragedy around the world, state whether any British personnel were the victims. As if we are any more important than other nationalities. But that isn't what they are implying. The fact is when they are involved, when any British person is caught up in incidents like these, it brings it right home to us because somewhere in our own country are families distraught by the news, shattered by the change that a death of a loved one will bring and condemned to forever ask the haunting question 'Why?'

In fact there are families from Suffolk near to us who are going through that trauma right now. The reality for us in Bildeston is that we do have the good fortune to live in one of the most beautiful and peaceful places in the world. A place where the things that annoy and irritate us pale into insignificance when placed against the horrors we see reported in the news.

August is the height of summer, with the schools closed and the time for the traditional annual holiday for many families. When the weather is fine, warm and sunny it brings out the best in people and places. We switch from moaning about the cold to moaning about the heat and pollen count! It is also the time when we are more relaxed and, possibly, more vulnerable as a result. The advice from the Police and Security Services, which is more timely than ever, is to be ever vigilant both here and anywhere in the world where you might be on holiday this August. Have a happy and safe summer, wherever you may go.

Lindsey Painting & Decorating Services

Professional & reliable interior and exterior home decor. Paint, Wallpaper Coving etc. Plus other allied services, Woodwork, tiling, laminate flooring. Curtain hanging, tracks/pelmets fitted.

Terry Peters

Home 01449 741483

Mob 07809 571790

Email tac59@talktalk.net

Friendly Experienced
Teacher offers
Individual

MATHS Tuition

Speciality
Confidence Building

KS1 – KS3

Call Colin Plummer on
01449 736918
for details and availability
or email:
colinp52@btinternet.com

Angel Delights

**Outside Caterer &
Specialised Confectioner**

Weddings – Christenings – Funerals
Birthday Parties - Barbecues - Dinner Parties

Tradional tea room now open
at 85 high Street Hadleigh

CAKES FOR ALL OCCASIONS

Contact Helen
01473 828191
info@angel-delights.com
www.angel-delights.com

BILDESTON PRIMARY SCHOOL



Our school **Road Safety Officers** were invited to an Awards event that took place at Endeavour House, Ipswich on Friday 26 June 2015. The girls were accompanied by Ms Golding where they firstly enjoyed a picnic lunch with road safety officers from across the county along with refreshments at the venue. They were then invited to the King Edmund Chamber to take part in a 'Question Time' style forum with an opportunity to ask questions to a panel of experts. There were also opportunities to meet other Junior Road Safety Officers and to enjoy presentations during the afternoon. You will be pleased to hear that Bildeston Primary School achieved a "**Silver award**" in the Junior Road Safety Officer Scheme.

PTFA

We are very pleased to let you all know we raised over £1400 at our summer fayre held on Saturday 27 June. This was a fantastic result and makes the hard work worthwhile!!



Tug of war, also known as tug o' war, tug war, rope war or rope pulling, is a sport that directly pits two teams against each other in a test of strength. In these photo scenarios, you will see the male population of our community trying to do just that!!!!

The origins of tug of war are uncertain, but it is beyond dispute that this once royal sport was practiced in ancient Egypt and China and now "Stop Press"!! in Bildeston!

What great sports they were!



Multi Skills

Selected pupils were chosen to take part in a Multi-Skills Festival for children in Year 1 and 2 which were held at Hadleigh High School on the morning of Tuesday 30 June 2015. The festival was held in the sports grounds of the school on a beautifully hot, sunny day. Mrs Graham accompanied the children to this event where the children were given various multi skills tasks to complete along with pupils from other schools within our pyramid. They all received a certificate for their efforts!

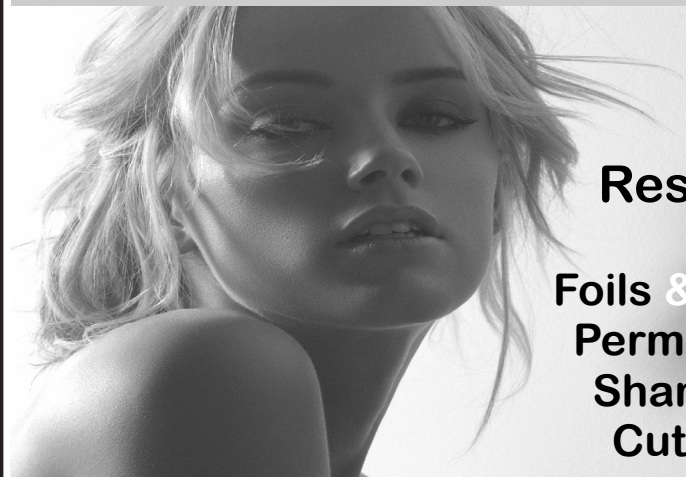
Well done KS1 – it's great for them to get an opportunity like this.

"Learning and Growing Together"
Newberry Road, Bildeston, Ipswich, Suffolk, IP7 7EU
Telephone: 01449 740269
Website: www.bildeston.suffolk.sch.uk



Studio 66

Ladies and Gents Hairdressers



Restyling

**Foils & Highlights
Perms & Colours
Shampoo & Sets
Cut & Blow Drys**

**Friendly Service from our Professional Team
Tue & Wed Senior Citizens**

*****special rates *****

Opening Times Tues - Friday 9 - 5 pm Sat - 8 - 1pm



Tel 01449 740644

52A High St Bildeston IP7 7EA



SIX ACRE PRODUCTIONS
PRESENTS

www.sixacreproductions.co.uk

Also find us on **facebook**

THE NEW MURDER MYSTERY

MAKE DO and MEND

**Written & Directed
by
Tom Hitchcock**

**with MUSIC
of the
ANDREWS SISTERS
LIVE**

contact

07508 472 142

sixacreproductions@live.co.uk

Raising money



for the

SUFFOLK COMMUNITY FOUNDATION

4, 5, 11 & 12 SEPTEMBER



7:30pm

Tickets £12.00

Price includes a
HOT DINNER

**YOU ARE INVITED TO
DRESS in 1940s
evening wear**

**A BARN PERFORMANCE
Manor Farm, Semer
IP7 6JB**

Courtesy of Mr. J. Buckle

PROUDLY SPONSORED BY



elmsett storshops

Karen Finch RHAD FSHAA



Hearing Problems?

Take that first step towards better hearing & book a hearing test with **Suffolk's** number one private provider for hearing care!

- Hearing assessments
- Latest digital hearing aids
- Outstanding aftercare
- Earwax removal ■ Noise protection

Your local centres:

HADLEIGH

Hadleigh Health Centre, Market Place

NEEDHAM MARKET

The Country Practice, Barking Road

**Home visits
are also
available**

Book your hearing test today!



01473 230330

■ Award Winning ■ Family Run ■ Private ■ Independent

COUNTRYSIDE OBSERVER



We have now passed the summer solstice and without wishing to put the dampener on things, each night going forward sees a slight reduction in daylight. One of the world's oldest evidence of the Summer Solstice's importance in culture is Stonehenge a megalithic structure which clearly marks the moment of the June Solstice. I drove past this ancient site twice in late June on my way to and from Devon. As young children in the mid 1960's my parents would take us to visit the stones and we were allowed to clamber all over them. Not so today with barriers all around and zealous security guards

ready to pounce on any trespassers, Druids included!

On a recent flying trip I returned late from Somerset dropping passengers near Colchester before the final leg back to Rougham. Wattisham ATC was closed so I flew back over the village at 5000 ft altitude. What is clearly evident is the valley that Bildeston sits in with the river meandering along its western side and the very reason why the village re located centuries ago. It's a pity we cannot run to colour prints as the picture I took shows the village and surrounding country at its finest.

Our vegetable patch this year has taken a full head on assault by rabbits that live close by. A number of allotment holders have fenced their plots off so rather like a car thief who ignores cars with steering clamps Mr Rabbit and family go for the easy touch ie mine and many others unfenced allotments. Having lost our celery, chard and dwarf beans enough was enough! An early morning start was called for and at 05-30 I spied him from my bedroom window chomping through the runner beans. Swiftly downstairs in my dressing gown, gun loaded I sneak around the back of the garage. There he was heartily stuck into the beans my blood pressure rising. One shot was all it took, his chums seem to have got the message and moved to allotments new.

Most people would be wary of crossing a field with a large snorting bull but, every year, scores of people are injured or even killed by other animals in the English countryside. Many are creatures that may not instantly spring to mind - and have caused injury or terrified people who were otherwise enjoying a rural idyll. But which animals are dangerous and why do they attack? Cows account for at least as many deaths as bulls - and can be very unpredictable, particularly when young calves are close by. Sarah Leonard, a nurse from Sheffield, survived being trampled by a herd of cows while with her dog in Lincolnshire last November. She suffered two broken arms, a broken collar bone and several broken ribs and spent five weeks in hospital, two of which were in intensive care. She was on a four mile circular walk when she saw the cows coming towards her. Cows can weigh anything from 650kg to 1,000kg and will stop at nothing to protect their young so caution if you're out walking locally and crossing fields where there are cows and calves. Today as I write I have learned that yesterday was the hottest July day since records began in the UK 138 years ago. All I can say is thank goodness for air conditioning in my office without it life would have been miserable. Stepping outside was unbelievable and like reaching down at home to open the oven door and the blast of heat hitting you in the face full on.

Mike Biddulph

COUSINS & SON BILDESTON LTD

available to carry out all your building requirements
from
Renovations / Alterations / Extensions
to
General Repairs

Please contact Paul for a free estimate
01449 744360 or 07876 244461
or email paul.cousins268@btinternet.com

Tired of Housework?

COUNTRY MAIDS

A highly experienced home cleaning service

Established over 24 years, COUNTRY MAIDS
provides a service for all home cleaning from
brass, ovens, windows, kitchens and polishing.

All materials and equipment provided.

No contracts.

For a free quote telephone:

(01449) 741108

HATTERS CHIMNEY SWEEPS UK

WWW.CHIMNEY-SWEEP.ORG.UK

CHIMNEY & FLUE SWEEPING

FROM £45 INTRODUCE

A FRIEND AND EARN A

£10 DISCOUNT STOVE

MAINTENANCE

CHIMNEY REPAIRS

CCTV FLUE INSPECTION

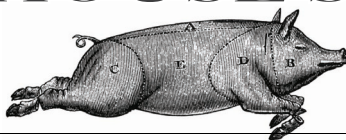
01787 281979



FAMILY GROCER PROVISIONS OFF LICENCE

BANK HOUSE STORES

Richard & Joan
O'Sullivan



telephone
01449 740403

Shop locally - and help keep Bildeston beautiful!

Here's some good news that will save you money without the need to travel. The prices of Kingsmill Sliced Bread - including 50/50 and Wholemeal - are now reduced to just £1.20. We also stock the new "SmartBuy" economy range of products from Londis at discount beating prices. Here are a few examples:

2kg Bag Potatoes	£1.49	Spaghetti Pasta	69p
Carrots	500g Bag 75p	Onions	3 - Pack 99p
Bag of 7 Apples	£1.25	Energy Drink	39p
Chopped Tomatoes	40p	Baked Beans	39p

Hart's Eggs are still only £1 for 6 (£1.30 Free Range)

Save even more money with our special offers, available from 25th July to 15th August:

Andrex Toilet Rolls	4-Pack	2 for £3.50
Gold Blend Coffee	100g	Only £2.65
Flora	500g	Only £1.29
Persil 1.6kg Powder	23-Wash	Only £4
Anchor Butter	250g	Only £1.29
Tropicana Orange Juice	850ml	Only £1.69
Isla Negra	Chilean Wines	Only £4.99
Casillero del Diablo	Chilean Wines	Only £6
Teacher's/Smirnoff/Gordon's		Only £13.50
Foster's Lager	15-Pack	Only £10

.....plus many, many more.

We are open from 7am to 7pm (6.30 for the Post Office - 6 o'clock on Wednesdays) Monday to Saturday and 8.00 to 12.00 every Sunday and Bank Holidays.

Shop Locally - You need a jolly good reason not to!

Bert Chandler 26th May, 1933 – 9th June, 2015

Whether you are a newcomer to the village or have lived here all your life, you will all know of Mr Chandler either as the helpful ironmonger who kept the tardis-like shop in the square or, lately, as the quiet chap who walked around the roads and fields with his zimmer-frame. When you talk to anyone about him, the words “helpful”, “wonderful”, “lovely” and “kind” are always used. I thought that I was the only one he helped either with advice on which nails or screws to use or by mending my boys’ bike-tyres when I was too clumsy to do it but Bert helped everyone because that was just who he was. There are so many people whose bike-tyres he mended; he ordered the correct rivets and then fitted them; he ground down lenses and he mended lawn-mowers - all of this with a smile and a warm greeting. Bert embodied everything that we love about living in Bildeston.

As someone said recently, you could go everywhere looking for something then go to Bert and he would say “Yes, I’ve got several, which colour would you like?” The shop was a complete wonderland for the do-it-yourself fanatic; he would disappear for a little while and then come back with whatever you needed. You had to be careful, however, where you walked if you went in just before he closed because he would bring inside all the stuff usually kept on the pavement outside the shop and your way to the counter and the exit was blocked and you were trapped forever. Bert and Sylvia came up to Suffolk in 1969 with their children Steven, Theresa and Kim. He had been a baker in the family business in Rainham. They met at a wedding when Bert got drunk and Sylvia looked after him. He had previously bought some land at Mersea where they built a house. His children and grandchildren spent lots of time there; everyone water-skied including Bert who used to put a chair on top of the “plank” to try to get higher! He loved vintage cars and took great pleasure in buying wrecks and restoring them. He had several Austin Sevens, an Armstrong Siddley Lancaster and a red MGBGT for Sylvia. They would go to classic car shows and do the Felixstowe run and many of us have seen them at the Bildeston Show. “Doing them up” was never about how much they were worth but the work was always done from love – that was Bert!

They had the shop from 1969 to 1993 and Bert used to do the “paraffin round” when he travelled round the villages selling his wares. There were lots of shops in Bildeston then and the doctors was on the corner of the square. Bert used to stay open until the end of the evening surgery so that people could come into the shop. Bert always wore a short blue jacket and there was always a chair in the shop so that people could stop for a chat.

More recently, and especially since Sylvia died 14 months ago, Bert was to be seen walking around the area, stopping to have a quiet word with everyone he knew and even some he didn’t! He often ended up on a bench with an ice-cream or a cup of tea in his hand even timing his arrival in Kings Pightle when there was tea on offer! I am sure that we will all miss his generous and kind nature and be thankful for all the help he gave us.

Theresa and David would like to thank the residents of the village for looking out for Bert during his recent illness and for the many times they brought him back home. Special thanks go to Della Ambrose and Bildeston Surgery.

BASE GARAGE LTD

MONDAY – FRIDAY 7.30 – 6.00

SATURDAY 8.00 – 12.00

- TYRES
- EXHAUSTS
- PUNCTURES
- BATTERIES
- WHEELBALANCING
- AIR CONDITIONING
- LATEST DIAGNOSTIC EQUIPMENT
- WELDING TO MOT STANDARD
- SERVICING & ALL REPAIRS TO ALL MAKES OF CARS
& LIGHT VANS FLEET DRIVERS WELCOME
- MOT CLASS 4, 5 & 7
- COURTESY CAR AVAILABLE
- COLLECTION & DELIVERY SERVICE 5 MILES RADIUS
OF GREAT BRICETT
- WINTER CHECKS
- HOLIDAY CHECKS

£10 OFF!

***YOUR MOT WITH THIS
ADVERT***

LOWER FARM ROAD, GT BRICETT, IPSWICH IP7 7DR

01473 658987 / 01473 657704



KINGS HEAD & Brewery

Nigel, Susie, Ryan and Freya look forward to welcoming you to the Bildeston Kings Head.

www.bildestonkingshead.co.uk

- Here's our **free live music** for **August**: every **Wednesday** is **Open Mic Night** from **8:30pm**; from **1pm on Sunday 23rd** **Kevin Nightingale** will accompany your roast lunch on contemporary classical acoustic guitar; and from **9pm on Saturday 29th** highly recommended acoustic duo **The Papercuts**, Clarice & Simon, will be entertaining us.
- Our monthly **charity quiz night** is on **Thursday 27th August** at 8:30pm, please arrive by 8pm. To book a table telephone Sue or Nigel on 01449 741 434. Thanks to June's teams who raised **£66** for the Joseph Orchard Fund.
- Our good value homemade food uses quality ingredients that are locally sourced where possible. We are well known for tasty beer-battered fish & chips, delicious boozy beef pie (Suffolk Red Poll beef) and our freshly prepared traditional Sunday roasts. Meals are cooked to order and available to eat-in or take-away. To reserve a table please phone **Sue or Nigel on 01449 741434**.
- We brew our own real ales on-site (tours by arrangement) with at least one other from a local independent brewer.
- Our opening times are as follows:

Wednesday	Open 6pm-12am (open mic/buskin night)
Thursday	Open 6pm-11pm (bar games night)
Friday	Open 4pm-12am (full menu 6-9pm, T/Away 5pm)
Saturday	Open 12pm-12am (full menu 12-2pm & 6-9pm)
Sunday	Open 12pm-10:30pm (roast/Sunday menu 12-3pm)
Monday/Tuesday	Closed



KETTLEBASTON
SATURDAY, 19TH SEPTEMBER

JAZZ and GIN

HELEN ABBEY QUARTET

CONCERT 7.00pm
Bar opens 6.00pm

TICKETS £15.00

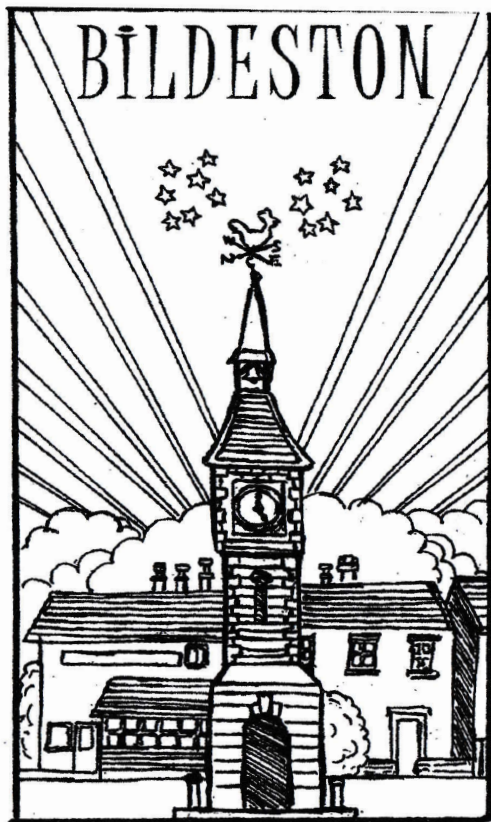
(To include one free cocktail, canapés and to get you home, a mug of hot soup)

Tickets from June Carpenter: 01449741318
e-mail: junecarpenter@btinternet.com

Proceeds for St. Mary's Church

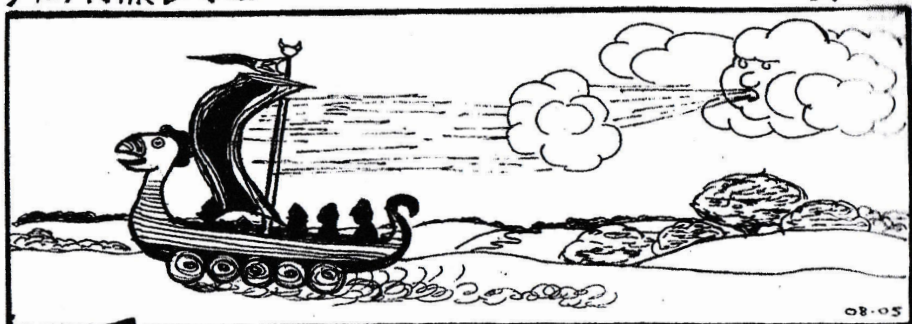
BUGLE'S 25TH ANNIVERSARY YEAR

Our next instalment in the Bugle archives sees us reprinting 'Bib' Edwards' new design for Bildeston Parish Council's logo in August 2006, which we use every month with the Council's minutes. Underneath is a cartoon which he drew for August 2005 and is a timely reminder of Bib and the artistic talent we miss.



BILDR THE BOLD

by Bib



FROM THE SUFFOLK COAST, OUR
FOUNDER VOYAGES INLAND...

Aaron Clarke

Accountants

Professional accountancy services
with a personal touch

Accountancy

Taxation

Bookkeeping and VAT

Management Accounts

Payroll

Company Secretarial Services

Business Start-Up's

If you are struggling with your tax return or accounts...
contact Luke Harvey or Ian Chambers
for a free initial consultation

Main Office

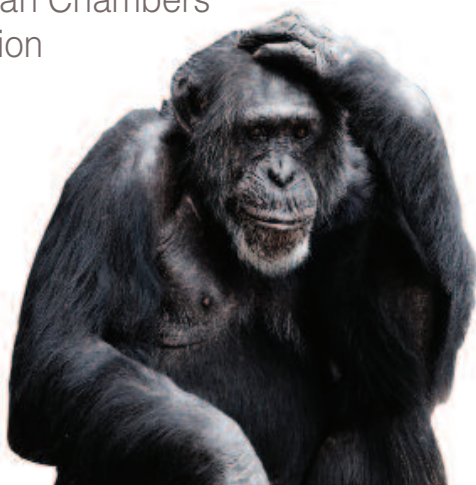
1 The Street
Elmsett, Ipswich
Suffolk IP7 6PA

Tel 01473 657763

Fax 01473 657764

www.aaronclarke.co.uk

info@aaronclarke.co.uk



Pilates Classes Now Held at Kersey Mill

If you want to exercise both your body and mind as well as improving your sense of well being, strength, flexibility and mobility then I truly believe pilates is for you!

I am passionate about bringing the benefits of pilates to everyone and as a fully qualified teacher certified by Europe's largest professional pilates organisation I can help you improve muscle tone and core stability, building strength from the inside out, re-balancing the body and bringing it into correct alignment.

Please contact me if you wish to join a small matwork class and allow me and the Body Control Pilates method help you achieve your goals. Pilates can benefit anyone of any age and any level of fitness. I look forward to hearing from you.

Call 07855 394 703 for more info.

www.pilatesworks4u.com

Jenny
x



Little Krafts www.littlekrafts.co.uk

20 Bury Street, Stowmarket, IP14 1HH
(Situated at the rear of Harts Homebrew & Crafts)

- Gibsons Games & Puzzles • Melissa & Doug
- NEW House of Puzzles Range
- Classic Wooden Toys • Latest 2014 Puzzles
- Perfect Party Presents from £3.99
- Fun, Education Toys

The ONLY Puzzle Shop in Stowmarket



Tel: 01449 674888 / 07919 508715

Email: littlekrafts@yahoo.co.uk



34th Suffolk Historic Churches Bike Ride and Walk

Sat. 12th September 9am to 5pm

Suffolk Historic Churches Trust is a non-denominational trust helping to preserve Suffolk's many old churches and chapels. Help us to support this important trust by taking part either by walking or cycling to as many churches as you wish. Also we require volunteers to man the stewards table at the church on that day, usually only for an hour each. A Rota will be available on the table inside the church for you to fill in the spaces or you can contact

Anne Hill on 01284 828643 for further inquiries and sponsor forms.

A plea from the Residents of Chamberlin Close.

Could whoever is in charge of such things organise, as before, to cut back the overgrown foliage on either side of Chamberlin Close. It is seriously impinging on the roadway making it difficult and dangerous for children and adults trying to access Chamberlin Hall and playground, especially if traffic is using it at the same time. Thank you.

BILDESTON COMMUNITY CYCLING

TUESDAY EVENING RIDES

Start at 6.45pm from the Market Square, and last about an hour. There are two groups of riders.

A SLOW RIDE, starting at 6 to 8 miles, specifically for new and returning riders, at a speed to suit the riders. Walking on hills is allowed, and no Lycra is necessary!

WHY NOT COME ALONG WITH A FEW FRIENDS? YOU MUST HAVE A BIKE IN THE SHED, OR ONE YOU CAN BORROW.

A REGULAR RIDE of 15 -20 miles for more confident riders.

If you used to cycle, or want to start, why not join us this year? Just turn up at the Market Square. If you have any queries, please contact Robin Weaver on 01449 741048.

We regret no children under 12, no unaccompanied children under 16.

Dentist

Paul Rolfe BDS

Veneers & Crowns in a
single visit

Dental Implants

Family Dentistry

**Lavenham &
Long Melford**

01787 882722

www.paulrolfedental.co.uk



*Green Farm
Vintage China
Hire*



**A wide range of vintage china
and glass to hire for any occasion.**

carole.homer@btinternet.com
Tel: 01449 741498

CPH GARDEN SERVICES
All Jobs Considered, Large & Small

Grounds Maintenance
Garden Clearance
Patios, Decking & Pathways
Fencing
Painting & Decorating

Please contact us to discuss your needs
and obtain a no obligation quotation.

Telephone: Paul - 01449 740020

Telephone: Chris - 01787 210536

Email: chris.harman1990@gmail.com

P.D. ROSE.

Plumbing / Heating & General Building

- Plumbing & Heating Repairs
- Complete Bathrooms & Tiling
- Int. & Ext, Decorating
- Building Maintenance

Tel. 01787 211042

Mob. 07974 290697

3. Fen Street, Boxford, CO10 5HL



Done & Dusted
Cleaning Service



*We are a professional, reliable, recommended
family run business offering*

- Domestic Cleaning – regular cleaning or one off spring cleans.
- Small office cleaning
- Ironing service – Collected and delivered back to your door
- Oven Cleaning
- We can take you to the shops or collect your prescription etc. to make your life easier.

Please Call Us On:

Office 01449 258574/Mobile 07775 029579

THE BUGLE INTERVIEW

September sees the return of **BNatural** music festival. It has quickly established itself as a mainstay in the village calendar. This month's interview is with Nick English on behalf of the **BNatural** organisers.

How did the BNatural music festival first come about?

The festival was dreamt up on a long summer holiday with friends from the village. We had no idea what we were doing year one but the festival caught the imagination of so many – especially Judy Rumbold and Jocelyn Targett, Nicola Fenzl, Elaine Talbott, Mark Powell Davies, Sara Jackson, and so many others – and, every year, their enthusiasm translates into a very joyous and uplifting weekend.

Tell us about the logistics of organising the event? When do you start the planning, who does what etc.?

The dreaming starts as soon as one festival is over but we start planning in earnest after the AGM, which is in March – we have a committee and ANYONE can join. We assign ourselves specific roles, and report back regularly over the course of the year, coming up with new schemes and ideas to keep the festival vibrant and alive.

How do you choose the acts and groups to include?

Within a 30-mile radius, there's a huge number of musicians performing and playing all manner and types of music, from teenagers with their first guitar, to accomplished choral ensembles with decades of experience. B Natural is, in part, their chance to take centre stage. We also explore our contacts in the music world to bring new acts to Bildeston from much further afield, some on the cusp of making it, and others who definitely deserve to. The key is: variety, quality, charm, excitement.

With the festival now being free, how do you envisage the event being sustainable, at least breaking even financially?

The total income for BNatural comes from fund-raising, raffles, selling tea and cakes, beer on the square, and the generous support of friendly businesses, especially Inflate who provide us with the brilliant inflatable main stage. Breaking even is impossible without donations and sponsorship, as well as a lot of free time and effort given by the enthusiasts in the village. We get terrific support from Nigel and team at the King's Head, who has even brewed a special B Natural beer with proceeds from its sale boosting the coffers. The musicians rightly get paid, even if it's not very much, and it's wonderful to see villagers digging deep and supporting B Natural.

What differences and delights have you planned for 2015?

There are several key elements which we are always refining and trying to do better each year. The Friday night curtain-raiser has a fabulous jazz band who regularly play at Ronnie Scotts, we'll have a smaller number of Musical Gardens but we're putting more in to the programming, Saturday evening will have terrific dance bands so the party is really swinging. And we'll have trick or two up our sleeves, too, so make sure you come to the Festival – all will be revealed on the weekend of the 12th and 13th September!

What do you think is the future of the festival?

We said at the beginning we'd give it five years. Well this is the fifth year, and we need a body of revved-up villagers who want to help run it in the future, so we can all enjoy our blissful last weekend of summer in the Clock Tower Square for years to come.

B **NATURAL** **BILDESTON'S** **BUZZY** **MUSIC FESTIVAL**



DANCING IN THE SQUARE
MUSICAL GARDENS

LATE NIGHTS AT THE KING'S HEAD

It all starts with **Friday Evening Jazz At The Crown** and
ends with **Sunday Afternoon Tea On The Lawn**

11th 12th 13th
September

Invite a houseful...
once again, **B NATURAL** is entirely free!

FIND OUT MORE www.bnatural.bildeston.org

Garage Sale

Fundraiser

Thank you to

everyone who supported us by clearing their garages and attics and enjoying the music and goodies for sale under the lovely summer sun, you helped us to raise £247.00

B
NATURAL



BILDESTON'S BUZZY MUSIC FESTIVAL IS BACK.
AND IT'S SWEETER THAN A POT OF HONEY!

BARGEWELL SKIP HIRE

2 - 8 yard skips

1 ton waste bags

We also collect any full waste bags

Long or short term hire

Delivery 7 days a week

Fast & friendly service

Stowmarket 01449 615056

Mobile: 07770 452378

High Rd, Gt Finborough, Stowmarket, Suffolk

www.bargewellskiphire.com

Credit cards accepted

CHIMNEY SWEEP

ECO SWEEP

CHIMNEY SERVICES

NEW POWER SWEEPING METHOD USED
FOR A MORE THOROUGH CHIMNEY CLEAN
THAN BRUSHES.

INDUSTRIAL HEPA FILTERED VACUUM.

FULLY INSURED.

INSURANCE RECOGNIZED CERTIFICATES ISSUED.

SPOTLESS, RELIABLE AND FRIENDLY SERVICE.

ALL CHIMNEYS, WOOD BURNERS, AGA, BOILER

FLUES SWEEP.

GUILD OF MASTER SWEEPS CERTIFICATED MEMBER.



Power sweeping



TEL. 01359 232335

Bildeston Ladies Club!

Old Macdonald's got nothing on the Bendall's - E, I, E, I, Oh what a fabulous evening we had on our behind the scenes tour at Hollow Trees Farm! Sally is an amazing font of knowledge on all things agricultural, passionate about the environment and keen to pass on her knowledge to the next generation of young farmers. We thoroughly enjoyed our tractor trailer ride around the farm, safely steered by Robert. During the visit we learnt much about the history of Hollow Trees and the way their business has grown. We are truly lucky to have them on our doorstep. We finished our evening with delicious tea and cake, so we all went home happy! Our thanks to Sally and Robert for a fantastic end to our Ladies Club year.



Our next official Ladies Club meeting will be on September 3rd when we start off our new year's programme with a visit from our local Community First Responders with a talk entitled Keep Yourself Safe And Help Others. I think this will be an informative evening, so do come and join us - if you've never been before and are a bit unsure, please phone me for a chat. We aim to be a friendly, social group and you don't have to live in Bildeston to join us.

Meanwhile, many ladies expressed an interest in having another "go" at bowls and so Adrian will be holding another open meeting for us (and any friends we would like to bring along) on Thursday August 6th - meet at the Chamberlin hall bowls green at 7 o'clock for a friendly attempt at a game!

Jo Silburn 740504 (Bookings Secretary)

Kings Pightle Trustees Invite You



To Kings Pightle Nature Reserve
(the Pocket Park off the corner of
the Sports Field)

Saturday 29th August
12.00 - 2.00pm

Bring a picnic and find out about the new facilities
available for both people and wildlife at your vil-
lage nature reserve.

Children's nature trails and activities
New Bird Hide
Spot the owl boxes
How many Species Can you identify?



For more information contact
Elaine Talbott
01449 740721 or elainetal-
bott@hotmail.co.uk

Supported by
Biff Award
Building communities. Transforming lives.

Workshops in August

Brook Farm Studio



Website: www.brookfarmstudio.co.uk
email: brookfarmstudio@gmail.com

Children's Crafts

Wed 5th, 12th, 19th & 26th 10.30-12.30 £6

Felting Textiles

Thurs 6th, 13th, 20th & 27th 10-12.30 £8

Painting - Sat 22nd 10.00am to 1.00pm £10

Resist Dyeing - Fri 7th 10 - 3pm £30

Figurative Drawing- Sat 15th

10.00am- 1.00pm £10

Pottery - 11th, 15th & 25th 2pm-4.30pm £20

Regular weekly classes in August:

Thursday - Felt & Textiles £8

Tuesday and Friday - Painting £8

All 10am - 12.30pm

Booking essential call Hazel on 07432 138966 or 01473 823819

Canine Wellbeing At The Pheasantry

Wattisham, Suffolk IP7 7LA

Dog and Puppy Day Creche

We provide a very special service of looking after your dog or puppy. In the comfort of our own home, whilst you are at work, or whilst your dog is recovering from veterinary treatment. Why not allow your puppy to socialise with other canine friends. Daily collection and delivery is available.

Dogs on Holiday

Whilst you are on holiday, why not let your canine friend have one too. She/he can come and stay in the comfort of our own home, where she/he will be treated as one of the family.

Also available

Canine Hydrotherapy

For more details phone:

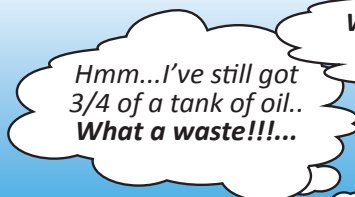
01449 740659 mobile 07956286056

or visit our website:www.caninewellbeing.co.uk

Heating Oil



...Wish I could just
get 200 litres



Hmm...I've still got
3/4 of a tank of oil..
What a waste!!!...

What can I do??..
Ahh an uplift!!..



Brrrrrrrr!!
NO HEATING OIL
the boiler won't start!!



01473 558854



www.badgerfuels.com



WALL TO WALL BUILDERS

Experienced, Professional & Reliable

- Extensions

- New Builds

- Listed Buildings

- Loft Conversions

- Kitchens & Bathrooms

- All Renovation Work
& Repairs

Richard Bateson

M: 07799 114814

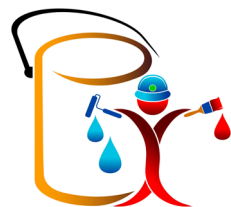
T: 01449 741510

richardbwtw@gmail.com

www.walltowallbuilders.co.uk

Stuart Walker

Decorating, Painting & Refurbishments



A locally based company offering an honest and reliable service

Painting - Decorating - Refurbishments - Repairs

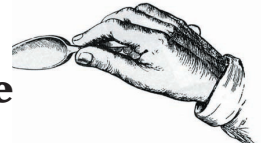
All work considered indoors & out! Fully Insured & free quotations provided

Please contact Stuart on Tel: 07711 606464 or 01449 740387

Email: stuma1@hotmail.co.uk



Recipe of the Month **Sparkling Lemonade and Lime Jelly**



Ingredients

- 6 sheets (10g) leaf gelatine
- 4 tbsp lime or lemon squash
- 50ml water
- 600ml lemonade
- 100g fresh raspberries
- 100g fresh blueberries
- small handful of fresh mint leaves

- Serves 6
- TIP

If you are short on time don't keep back some of the jelly, use it all at once. The jellies won't look as bubbly, but they will taste just as great!

Method

1. Put the gelatine sheets in a medium bowl and cover with cold water. Leave to soak until they become very soft and floppy. Turn the sheets a couple of times to make sure they don't stick together in a clump.
2. Pour the squash and water into a small saucepan and heat very gently for a few seconds until just warm. Remove from heat and taking the sheets in your hands squeeze them over the bowl to remove excess water.
3. Plop the gelatine into the pan with the squash and stir until it melts. Return to heat if it doesn't melt almost immediately stirring gently until smooth and clear.
4. Pour lemonade into a large measuring jug. Add the gelatine mixture stirring continuously until all combined. Pour slowly as the lemonade will froth up.
5. Drop the berries into 6 wine glasses, pour almost all the jelly mixture over the top - keep back 100ml of the jelly. Cover the glasses with cling wrap. Put into the fridge for 4 hours until lightly set. Leave the reserved jelly at room temperature and do not allow it to set.
6. Take jellies out of the fridge and add a few mint leaves to each glass of jelly. Stir each jelly a couple of times with a fork to create bubbles of air, pour the runny reserved jelly over the top to create a smooth surface. Cover with cling wrap and return to the fridge for a further 2-3 hours until set.



LATE SUMMER FETE

AND

DOG SHOW

Friday 18th September 2-5pm

at

Centre Academy East Anglia

Brettenham

(next door to the church)

Bouncy Castle Bungee Run Raffle Face Painting

Cake Stall Tombola Traditional Games BBQ

LIVE MUSIC

Free Entry and Parking

In Aid Of

EACH (East Anglia Children's Hospice)

AND

PAEGANT (Projects Aiding Gambian Education And Natural Talent)

BILDESTON PRODUCE SHOW 2015

Scarecrow Competition



Open to all
Let your

creativity run wild!

**Bring your scarecrow on the
morning of the show before
10.15am. 3 1st August 2015.**

HONEY BEE'S NURSERY

Hitcham Village Hall, Hitcham, IP7 7NE

FOR CHILDREN AGED 2 – 5 YEARS

Open Mon, Wed, Fri 9.15a.m. – 12.15p.m. or 3.15p.m.

Tues, Thurs 9.15a.m. – 12.15p.m.

Early Drop Off – 8.30a.m. Lunch Club Daily until 1.15p.m.

Fee's @ 2.50 per hour (3 hour session = £7.50)

2 Indoor Rooms and Outdoor Areas

Ofsted Registered

Early Years Funding accepted for all 3 & 4 year olds

2 year old funding may also be available

Free Taster Session Available

Contact: Sharon Scarfe 01449 740764 (hall) 01449 740581 (home)

BILDESTON PRODUCE SHOW



MONDAY 31st AUGUST 2015
AT ST MARY MAGDALENE CHURCH
OPEN 2.30 to 5.00pm

FUN FOR ALL THE FAMILY

Beer Tent. Scarecrow Competition. Tea and Cakes. Over 80 Classes to view.

Entry forms available at Bank House Stores.
Closing date 12noon Friday 28th August

FUND RAISING FOR PRODUCE SHOW THANK YOU

The produce show committee, including Angela and Martin Rodgers, would like to thank everyone who supported The Open Garden and Cream Tea event on Sat 20th June. Despite the inclement weather we raised £220 towards the start-up costs of the show to be held on Monday 31st August.

The schedules are now available at Bank House Stores.

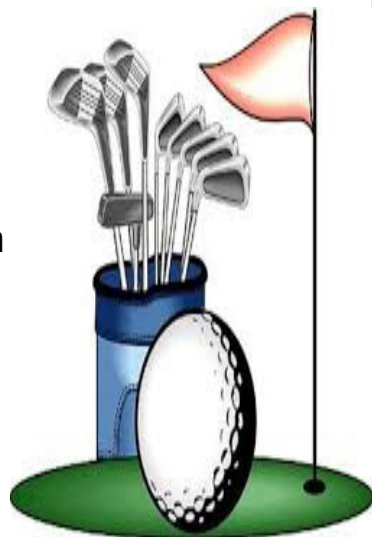
Old Joes Golf Club

Are you looking for somewhere fun, relaxed and affordable to come and learn or practice golf?

Here at Old Joes we have some amazing facilities available to all levels of golfer whether you are just starting out to the player looking for more intensive practice.

Our facilities include

- A 10 bay floodlit driving range
- Practice putting and chipping green with two practice bunkers
- a recently installed pro shop home to Nike Golf
- A custom fitting suite with state of the art launch monitor system
- Café with hot drinks available all year
- As well as our friendly, knowledgeable staff who are able to answer almost all of your golf queries



Golf Tuition is available please ask at the pro shop or give us a call for more details

Old Joes Golf Club, Joes Road, Cornard Tye, Great Cornard, Sudbury, CO10 0QB

Tel: 01787 374807

Email: info@patrickcollinsgolf.com

www.oldjoesgolfingrange.co.uk

BILDESTON ELECTRICAL

Rewires, Extensions, Board Changes or New Installations

Any Alterations to Existing Installations

(lights, sockets, etc.)

Contact Ian

01449 743664 or 07754 723685

- ❖ Home Maintenance
- ❖ Carpentry
- ❖ General Building Work
- ❖ Brickwork & Blockwork
- ❖ Stonework
- ❖ Hand Built Sheds
- ❖ Floor & Wall Tiling
- ❖ Paving & Patios
- ❖ Kitchens & Wardrobes
- ❖ Pergolas
- ❖ Carpentry
- ❖ Bespoke Fencing
- ❖ Property Maintenance
- ❖ Repairs
- ❖ Advice & Planning
- ❖ Shop & Office Fitting
- ❖ Renovation Work



Bob Buckle
Carpentry & Building Services

Bildeston - Suffolk.

For a prompt & reliable service.



01449 740275 or 07580 753020
Email: bobbuckle10@gmail.com

BILDESTON PARISH COUNCIL

DRAFT Minutes of the meeting of Bildeston Parish Council

held on 13th, July, 2015 in Chamberlin Hall at 7.30 pm

In attendance:

Councillors: A Guttridge (Chairman) D Dempsey, D Drury, A Hubbard,
R Lester, R Taylor

Also Present: D Blackburn (Clerk) County Councillor Mrs J Antill, District
Councillor M Creffield, One local resident



Councillor A Guttridge, the Chair of the Parish Council, opened the

meeting and welcomed everyone present.

C43/15/16 APOLOGIES FOR ABSENCE

An apology for absence had been submitted by Councillor Bullen.

C44/15/16 DECLARATIONS OF PECUNIARY AND NON-PECUNIARY INTERESTS

Councillors Taylor and Lester declared non-pecuniary interests as members of the Kings Pightle Management Committee and Sportsfield Management Committee. Councillor Drury declared a non-pecuniary interest by reason of being a member of the Sportsfield Management Committee. Councillor Guttridge declared a non-pecuniary interest by reason as a member of Chamberlin Hall Management Committee.

C45/15/16 DISPENSATIONS IN RESPECT OF PECUNIARY INTERESTS

There were none.

C46/15/16 MINUTES OF PREVIOUS MEETING

It was AGREED: That the minutes of the meetings held on 8th June, 2015 be signed by the Chairman as a correct record.

C47/15/16 POLICE REPORT

During the period 1st to 30th June 2015, there had been one incident of taking a vehicle without consent and one incident involving criminal damage.

Members discussed the congestion that was being encountered on Newberry Road. Whilst the problem often occurred throughout the day, it could be particularly acute in weekday mornings when parents dropped their children off at school. This could also affect the High Street, compounded by congestion at the entrance to the Health Centre. Pavement parking near the school was a particular concern as this affected the safety of children who walked to school. The Clerk was asked to raise this matter with the Police.

C48/15/16 DISTRICT COUNCILLOR'S REPORT

Councillor Mike Creffield provided an update on recent planning applications regarding the Taylor Made Joinery site. Planning application B/15/00382, relating to the erection of a training room, had been approved and conditions applied regarding additional tree and hedgerow planting to protect the visual amenity, character and appearance of the area, with all planting and seeding to be carried out in full, during the first planting and seeding season from October to March inclusive. Representations had been made in respect of B/15/00450, relating to the erection of a new warehouse, single storey extension to the existing warehouse and car parking. Councillor Hubbard reported on conditions which would be applied to the planning consent in respect of the re-instatement of the land and appropriate landscaping alongside the provision of the new warehouse and car park. It was noted that Councillor Hubbard had attended the Babergh Planning Committee in a personal capacity, not as a representative of the Parish Council.

C49/15/16 PUBLIC SESSION

Further to Minute 233/1415, Mr Richard O'Sullivan of Bank House Stores reported that when the fish and chip van traded operating in the Market Place for the first time over lunchtime on Friday, 10th July 2015, it had parked across a number of parking bays directly opposite the store. Mr O'Sullivan contended that it had an adverse effect on his business, depriving him of some passing trade. Members of the Parish Council considered reasonable and proportionate measures to address Mr O'Sullivan's main concern relating to the location of the fish and chip van.

It was AGREED:

- a. That the trader be requested to use another part of the Market Place which is not directly opposite Bank House Stores; and
- b. That the trader also be invited to consider to moving the van around the village to trade from different locations.

C50/15/16 BNATURAL 2015

Further to Minute C31/15/16, the Parish Council considered the award of a grant to the forthcoming BNatural music event.

It was AGREED: That a grant of £500 be awarded towards BNatural 2015.

C51/15/16 VILLAGE AMENITIES AND OPEN SPACES

Following a brief discussion by Members of the Parish Council, it was confirmed that this standing item on the agenda was useful in permitting brief updates to be provided on the work of various bodies that provided amenities within the village. It was however noted that some of those amenities (Sportsfield, Kings Pightle and Chamberlin Hall) were run independently of the Parish Council by separate charities, with their own governance arrangements. Specific items are brought forward from time to time on, for example, the Kings Pightle or Chamberlin Hall, when requests for financial support were submitted. Therefore it was unnecessary to have a standing item on the agenda for any one amenity.

The Chair submitted the most recent set of accounts from the Chamberlin Hall Management Committee. This was in accordance with a previous decision of the Parish Council when Members agreed that sets of accounts should be submitted periodically by organisations who might receive Parish Council funding. It was indicated that the Parish Council's Grounds Maintenance Operative had performed repairs, removed algae growth and begun to re-stain equipment within the Chamberlin Hall playground. This had improved the site significantly. The Chair undertook to investigate steps that could be taken to deal with the maintenance of hedges to the boundaries of Chamberlin Hall.

Councillor Drury reported upon the success of the Summer Solstice event at the Sportsfield which had raised £530. Private parties were being held in the pavilion on a relatively regular basis. Repairs were ongoing to the pavilion and the Sportsfield Management Committee was still seeking additional committee members.

Councillor Hubbard reported that there had been a bonfire on the Skate Park and a number of empty bottles were found close by which had contained alcoholic drinks. Councillor Drury reported that there had been a bonfire under the canopy of the pavilion at the Sportsfield. The Clerk was requested to raise both incidents with the Police.

C52/15/15 COUNTY COUNCILLOR'S REPORT

Councillor Mrs Jenny Antill reported on the following matters:

- A new heritage facility was to be provided on the Waterfront at Ipswich with £5 million to be

provided by Suffolk County Council, £1 million from University College Suffolk and £6 million from the National Lottery.

- There would be a public consultation up to 24th July 2015, on the future of the Fire & Rescue Service.

- A “Scamnesty” was being promoted by the County Council’s Trading Standards service in conjunction with BBC Radio Suffolk to raise awareness, encourage reporting and highlight actions that the public could use to avoid being the victims of scams.

- Liaison had been undertaken with the Chair of Governors at Bildeston Primary School over the capacity of Hadleigh High School to take all children within the catchment area, for, in the current year, five children had not been given places at Hadleigh School and had been granted places at other schools.

- Locality funding had been awarded by Councillor Mrs Antill in respect of the refurbishment of the kitchen at the Baptist Hall and improvements to the pavilion at the Sportsfield.

C53/15/16 TRAFFIC CALMING MEASURES

The Chair referred to the decision of the County Council not to authorise the deployment of Vehicle Activation System equipment in the village. Whilst the County Council had previously expressed some reservations about the use of VAS on the High Street, the decision not to permit its use on Ipswich Road had been surprising as such equipment had been used at this location by the County Council previously. It was noted that no particular problems had been identified about the location at a site meeting between a Highways Officer and Councillors Bullen and Hubbard when the application was being assessed.

No further information had been received recently about the prices obtained from the contractor for the provision of the re-designed gateway treatments.

It was AGREED: That Councillor Mrs Antill be requested to make representations to County Highways about the decision to refuse the deployment of VAS in the village and about the continuing delay in providing the approved traffic calming measures in the village.

Members of the Parish Council also discussed the congestion and parking on Newberry Road and opportunities, through the better use of available space, to improve the current situation.

It was AGREED: That the Clerk writes to Suffolk County Council seeking a review of Newberry Road and the preparation of proposals for a revised layout to improve parking, alleviate congestion and enhance public safety in the area.

C54/15/16 CLERK’S REPORT

The Clerk reported on various matters including the submission of the end of year accounts to the external auditor, the issuing of the new cemetery charges to local funeral directors, a communication from Mr James Cartledge MP regarding proposals to improve the mobile telephone signal to the village and a farm tour by Mr James Buckle attended by 23 villagers which had been arranged with the help of Councillor Hubbard. The Clerk would write to Mr Buckle thanking him for the tour which was due to be repeated on another part of the farm in the following year.

The Chair and Clerk reported upon prices of noticeboards which had been obtained from various suppliers. It was noted that the noticeboard could be erected on the the clock tower on the opposite column to the Parish Council noticeboard.

It was noted that the Chair and his wife would represent the Parish Council at a forthcoming “Beating the Retreat” reception at Wattisham.

The Grounds Maintenance Operative would be undertaking further training on the safe use of the ride-on mower which had been recommended by the supplier, Tomlinson’s Groundcare.

It was AGREED: That the Clerk be authorised, in consultation with the Chair, to order a further

noticeboard to be located at the base of the Clock Tower which could be used by local bodies and groups to advertise “what’s on” in the village.

C55/15/16 RESPONSIBLE FINANCIAL OFFICER’S UPDATE AND AUTHORISATION OF PAYMENTS

It was AGREED:

a. That the following payments be authorised be noted:

Payee	Description	Budget Category	Amount (incl. VAT)
David Blackburn	Clerk’s Pay	Salaries & Expenses	173.09
Adrian Chinery	Grounds Maintenance	Salaries & Expenses	260.80
Adrian Chinery	Expenses relating to mowing equipment	Playgrounds & Open Spaces	75.10
HMRC	PAYE	Salaries & Expenses	384.80
Babergh District Council	Uncontested Election Fee	Administrative & Legal	87.50
JRB Enterprises Ltd	Bin Bag Dispenser	Hall Hire	470.00

(Note: All items of expenditure to be met from the General Fund).

b. That a receipt of £260.00 be received from W. A. & D. G. Deacon Funeral Directors; and

c. That the quarterly budget monitoring report for the period 1st April to 30th June 2015, be received and noted.

C56/15/16 PLANNING APPLICATIONS

Planning Appendix A: Planning Applications Consultation

Reference	B/15/00626
Address	West View, High Street, Bildeston, IPSWICH, IP7 7EF
Proposal	Erection of 2 No. detached dwellings (following demolition of 1 No. bungalow)
Response	<p>That the Parish Council accepts the principle of development on this site however, it objects to the planning application in its present form and requests that the following matters are addressed:</p> <p>a. Improvements are made in regard to the design of the access such that it provides improved visibility from the drive as it joins the highway;</p> <p>b. Appropriate drawings and supporting information is provided by the applicant in respect of the land profiles that are proposed in order to address the Parish Council’s concerns that a two-storey development may be overly obtrusive on such a prominent site, unless ground levels are reduced; and</p> <p>c. Revised proposals are submitted by the applicant such that the cart lodges provided as single row of four bays to support the ‘farmyard effect’ of the new buildings.</p>

Planning Appendix B: Determined by Babergh District Council

Reference	B/15/00476
Address	64, Brookfield, Bildeston, IPSWICH, IP7 7EJ
Proposal	Erection of single storey rear extension, regularisation of side porch & rendering of property
Decision	Granted

Reference	B/14/00566
Address	174 High Street, Bildeston, IPSWICH, IP7 7EF
Proposal	Removal of 1 No. Ash tree.
Decision	Granted

Reference	B/15/00479
Address	21 High Street, Bildeston, IPSWICH, IP7 7EX
Proposal	Erection of single storey front porch and erection of single storey rear extension. As amended by Drawing No. 15714-PL01C, received 22/06/2015
Decision	Granted

Reference	B/15/00467
Address	13 Manor Road, Bildeston, IPSWICH, IP7 7BG
Proposal	Erection of single storey front extension
Decision	Refused

Planning Appendix C: Other Matters

Notice has been given by the Clerk on the Parish Noticeboard of a Footpath Diversion Order in respect of part of Bildeston Footpath No. 3 to permit development on the site of Tankard Farm, Wattisham Road, Bildeston, (B/14/00297/FUL/AS). The consultation deadline was the 6th August 2015.

C57/15/16 MATTERS TO BE BROUGHT TO THE ATTENTION OF THE COUNCIL

Councillor Hubbard enquired about the new grounds maintenance arrangements. Councillor Taylor indicated that the Grounds Maintenance Operative was recording the amount of time he spent on specific jobs at different sites. This would be collated and evaluated with a report due to be presented to the Parish Council at the end of the current growing season.

Councillor Lester congratulated BNatural on the success of their recent garage sale which had been held in the Market Place.

Councillor Lester referred to parking arrangements at the Church for weddings and funerals. While adjacent farmland could be used at the present time, the new owner of the land had identified their intention to redevelop the site in the future which would mean alternative arrangements would be required.

C58/15/16 CONFIDENTIAL BUSINESS

Following the exclusion of the public in accordance with the Public Bodies (Admissions to Meetings) Act 1960, Councillor Dempsey provided an update on Mr Morphew's bequest. It was noted that there would be an informal meeting and discussion between representatives

of the Kings Pightle Management Committee and the Parish Council on Wednesday 15th July 2015 when the position of kings Pightle would be considered as one of the beneficiaries of Mr Morpew's will.

The meeting closed at 9.45pm

AMERICA. AUSTRALIA. BRAZIL. JAPAN. EUROPE. UK

INTERNATIONALLY RENOUNED PIANIST AND MUSICAL ARRANGER

HUGH LEDIGO

28 YEARS WITH THE LATE KENNY BALL JAZZ BAND

PRESENTS THE

HUGH LEDIGO QUARTET

IN CONCERT

27th SEPTEMBER 2015

AT KERSEY MILL KERSEY SUFFOLK IP7 6DR

6.30 PM FOR 7.00 PM

IN AID OF THE AMPLITUDE MUSIC CLUB

MUSIC TRAINING FOR 11-19 YEAR OLDS

ALSO APPEARING

THE ADAM KEATON TRIO

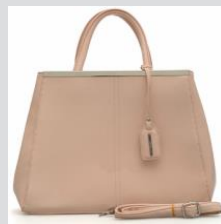
PERFORMING ROCK-RHYTHM AND BLUES

ADMISSION BY TICKET £12.00

LICENCED BAR

FOR TICKETS PHONE TONY 01473 657593

Zor Boutique at Kersey Mill



Stunning jewellery, scarves,
bags, purses, clothing & shoes.
All at affordable prices.

Call: 07969525859

Web: www.zoronline.com

Email: zoronline.sales@gmail.com

Kersey Mill, Stone Street IP7 6DP
(Near Hadleigh)

THE FLOWER SHOP

AT KERSEY MILL

Local and Nationwide deliveries available

☎ 01473 805156

At The Flower Shop our team create all aspects of Floristry from bouquets, arrangements, baskets, wedding and sympathy flowers.

Our florists create beautiful arrangements just for you. We use fresh seasonal flowers, purchased daily in all bouquets, baskets and arrangements.

Visit The Flower Shop today, order online, call and collect or arrange a delivery.

🌐 www.theflowershopkm.com

✉ sales@theflowershopkm.com

The Flower Shop at Kersey Mill, Ipswich Suffolk IP7 6DP

D'ENZA



HAIR @ BEAUTY SALON
AT

"KERSEY MILL"

"August Offers"

1: Holiday Special Offer ~ OPI Luxury Manicure & Luxury Pedicure

Special Price of only £35 or with gels £55

2: Hot Stone Back, neck & shoulder massage

Special Price of only £25

3: Hair~ Wash, Cut & Style 30% off

Special Price of only £18.55

4: Men's Hair cuts only in August.

Special Price of only £8

The above offers can not be used with another offer.

Please find us on facebook: denza.hairbeauty@facebook.com

Please telephone for more information or make a booking on: **01473 829069**

Email: info@denzahairandbeauty.com or visit us on Facebook or Twitter for our special offers.

For opening times & brochure please look at our website: www.denzahairandbeauty.com



O.P.I



Kersey Mill, Kersey, Ipswich, Suffolk. IP7 6DP.

A letter from Bildeston Rectory...

I looked at the Produce Show schedule in hope that something from the Rectory garden might be good to enter though after reading it through I am doubtful now. We only planted things that we knew would crop by the summer as we didn't know when we might be moving from The Rectory to our own bungalow. As it turns out it is likely that we won't be moving until the autumn now, but we have eaten the broad beans and mange tout, the lettuces that are left have bolted and the potatoes were delicious. We will have to look at the other classes and think what to enter for those.

It is good to see the church being used for the Produce Show - it is such a waste to only use such a fine building once a week. If we had a kitchen and toilet I am sure we could find other ways to make the building work better for the village. We are moving slowly towards getting the work done and the new owner of the land next door is being helpful. But for the Produce Show we have decided to hire a toilet as some people will be up there for quite a few hours. The couple who are getting married there on the Saturday have generously offered to pay for the hire so that they can benefit from it too. In times past the church was a happening place for Bildeston - market place, sanctuary from an enemy, the shelter in floods and storms, the only meeting place and the worship space. Now it seems very much on the edge of the community which saddens me, as so much has been invested in the building over the centuries from generations of villagers. I would like to see the school use it more as a resource for the curriculum - I am thinking of local history, science, English and RE, maths, scale models and arts... and for village groups to feel they can use it as a place to meet. We did have some fun with pets there this Sunday - well dogs anyway, and I introduced Harvey the Harvest Mouse who might visit again for Harvest Festival!

I would really love to have a community choir in the village and the church would be a great practise place as the acoustics are so good. Has Bildeston ever had a choir of its own? I discovered last week that you can apply for a community grant to get a choir started and I am very keen. Singing is a great activity for health as well as an enjoyable thing to take part in. Would you be interested? Would B Natural want a village choir to participate? So I do hope that there will be lots of people and entries this year and scarecrows to see. We will have a bar and refreshments to make your afternoon go well and I am looking forward to seeing all the visitors enjoying the show and finding out who has won each class - though it's not the winning that matters really, just the fun of entering. I might have a go at a liqueur - the currants are nearly ripe.

Yours, Rev Liz



Local Caring Independent Funeral Service

24 Hour Personal Service * Private Chapel * FREE Parking

www.andrewbingham.co.uk

01449 771666

The Nutshell, Milton Road South, Stowmarket, IP14 1EZ



Golden Charter
Funeral Plans



**BILDESTON w WATTISHAM & LINDSEY,
WHATFIELD w SEMER, NEDGING & NAUGHTON**

SERVICE SCHEDULE –August 2015

August 2015 NB – Services in bold are Benefice Services			
August 2nd Trinity 9 Proper 13	11.00	Sunday Service	Bildeston
August 9th Trinity 10 Proper 14	9.30am	Holy Communion	Bildeston
August 16th Trinity 11 Proper 15	11.00	Morning Prayer	Bildeston
August 23rd Trinity 12 Proper 16	11.00	Benefice Holy Communion	Bildeston
August 30th Trinity 13 Proper 17	11.00	Benefice HC Service + Baptism	Naughton

Baptist Church, Duke Street, Bildeston

Jim Haley tel: 01449 740716 email: bildestonbc@gmail.com

Service every Sunday morning at 10:45

Lunch Club: at 12:30 on the first Wednesday of each month –

All are most welcome

Community Coffee Centre: Every Friday from 09:15 to 11:30

Enjoy meeting old and new friends at these events!

‘Craft it Together’ - Every Monday at 7pm.

Bring along your craft activities and join us for an informal, relaxed evening -
share ideas, gain new skills or just enjoy doing your own thing.



Bildeston Community Coffee Centre

Baptist Church 9:15-11:30..... **Every Friday**

Lunch club 12.30pm.....**1st Wednesday each month**

Craft it Together

01449 740716 for details.....**Every Monday**

Strollers & Striders

Baptist Church Car Park 10:00 **Every Monday**

Baby & Toddler Group

Baptist Church 9:15-11:30..... **Every Tuesday**

Tuesday Evening Bike Rides

6.45pm Market Square.....**every Tuesday**

Ladies Club

7.00pm Chamberlin Hall evening of Lawn Bowls.....**Thurs 6th**

Kings Pightle Picnic

12.00 to 2.00pm Kings Pightle Nature Reserve.....**Sat 29th**

Village Produce Show

2.30 - 5.00pm St Mary Magdalene Church.....**Mon 31st**

Men's Breakfast

Baptist Church 8:00am.....**Last Saturday of the Month**

Chamberlin Hall New 100 Club

Watch out for news next month for the start of this exciting venture!

More details on events inside.

Please tell us about your events in September

email: editor@bildestonbugle.co.uk



When you're finished with this Bugle please pass it on or recycle it.