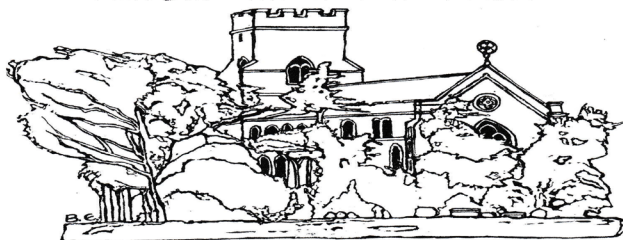


**This issue kindly
sponsored by -**

**In memory of
Barbara Williams
an original 'Squirrell'**



Saint Mary's Church, Bildeston, Suffolk.

The village magazine produced for the people of Bildeston



BILDESTON BUGLE ADVERTISING AND FREE CONTRIBUTION INFORMATION

Our aim is to provide every resident in Bildeston with a magazine which provides information of local interest FREE OF CHARGE. To that end we are required to be efficient in the space we use to print free notices. We endeavour to include interesting items, announcements for events open to the general public for free and items of a charitable nature free of charge. Ongoing free announcements need to be reduced to minimum size or make a contribution towards printing costs. Please check with us before submitting your advert and ALWAYS provide us with all of your contact details in order for us to send a receipt.

email: editor@bildestonbugle.co.uk

Sponsor a 'Bugle' – £15 per issue

includes a brief message of your choice on the cover of the magazine

Advertising Rates

	1 issue	6 issues (15% disc)	12 issues (30% disc)	
1/4 page	£3.00	£15.00	£26.00	65mm W x 92mm H
1/2 page	£6.00	£30.00	£50.00	134mm W x 92mm H
Full page	£12.00	£60.00	£100.00	134mm W x 190mm H

THE SMALL PRINT

All adverts, payments and items are required by the 17th of the month for inclusion in the following month's issue. The earlier free contributions are received the greater the chance of inclusion. Please make cheques payable to Bildeston Bugle and send to:

The Editor, Bildeston Bugle, 14 Squirrells Mill Rd, Bildeston IP7 7DY

Receipts cannot be issued without your full postal address.

If we do not receive payment by the 17th of the month
your advertisement may NOT be included

The Bildeston Bugle Management Team is:

Alan Jacobs (Editor) - 14 Squirrells Mill Road, Bildeston IP7 7DY 01449 741645

Nan Dales (Treasurer) 142 High Street, Bildeston IP7 7EF 01449 741047

Tricia Baldwin (Advertising Revenue)

Angie Biddulph (Bugle Team Liaison)

Vic Ling (Assistant Editor)

Alison Sims (Marketing)

ED'S COMMENT

Chamberlin Hall Management Committee (CHMC) held its Annual General Meeting during the week of May 25th. What possible reason was there for the Management Committee of the village hall not to publicise this crucial meeting here in the Bugle, in its own village magazine?

The Bugle is delivered free to all residents and all homes in our village, thus ensuring all the people in the village who matter get to read about events planned. Not everyone in the village might go to the Health Centre in the run up to the AGM, or, perish the thought, shop at Bank House Stores. But they all get their copy of the Bugle. We publish, free of charge as we do for all village organisations, all Chamberlin Hall public fundraising functions and events and those of the wonderful CHAPS, so why were we not used to publicise the AGM?

Maybe if it had been publicised a little better the turnout for the AGM would have been higher than the half a dozen or so people, not counting the committee, who did turn up. It is another example of CHMC not being as open and transparent as they could or should be, particularly at the end of the year when there have been questions asked about the costs involved in hiring the hall, the overall management and its future financial health and sustainability. The Parish Councillor representative did not attend and, once again, the AGM was not reported back to the Parish Council meeting of 8th June. Why isn't such an important village facility not a standard agenda item under Village Amenities? Maybe a Parish Councillor will ask that question.

The Bugle has acknowledged in the past how it remains a challenge to manage such a large building and the need to prioritise paying customers in order to maintain its financial viability, but it's the lack of business expertise to exploit all options and alternative uses for the benefit of the village that seems to concern residents.

The Bugle has recently published articles from villagers and letters reminding people of what used to happen in the previous village hall along with suggestions of how the hall might be used more.

For those who were unable to attend the AGM the main points raised appeared to be:

- overall profit was down a lot on the previous 12 months
- the bar turnover was down 50% due to lack of bookings
- the CHAPS play and pantomime provided the biggest amount of fundraising
- The committee was re-established and grateful to be boosted by a new member

Clearly there is a need for us all to get behind the committee as the treasurer's warning about reduced money coming in brings home the stark reality of continuing a situation where income falls. It's ironic as the Bugle archive for this month reprints the piece from the excited Management Committee in July 1992 announcing the hope for plans to purchase land to build a new hall for the village!

The members of CHMC put a lot of hard work and effort into managing the village hall on our behalf, it isn't an easy task, and often a thankless one as community service sometimes is. But the hall belongs to the village and a connection needs to be found between the need to finance an expensive property with making sure the hall once again becomes, not just part of the social fabric of the village, but the vital hub it once was that drove residents in the early 1990s to build a new much improved venue.

Lindsey Painting & Decorating Services

Professional & reliable interior and exterior home decor. Paint, Wallpaper Coving etc. Plus other allied services, Woodwork, tiling, laminate flooring. Curtain hanging, tracks/pelmets fitted.

Terry Peters

Home 01449 741483

Mob 07809 571790

Email tac59@talktalk.net

Friendly Experienced
Teacher offers
Individual

MATHS Tuition

Speciality
Confidence Building

KS1 – KS3

Call Colin Plummer on
01449 736918
for details and availability
or email:
colinp52@btinternet.com

Angel Delights

**Outside Caterer &
Specialised Confectioner**

Weddings – Christenings – Funerals
Birthday Parties - Barbecues - Dinner Parties

Tradional tea room now open
at 85 high Street Hadleigh

CAKES FOR ALL OCCASIONS

Contact Helen
01473 828191
info@angel-delights.com
www.angel-delights.com

BILDESTON PRIMARY SCHOOL

Sports Day



Our sports day was held on Wednesday 3 June during the afternoon. Events that the children took part in were

- Sprint/Dressing Up Race (KS1)
- Throwing Events (KS1 & KS2)
- Obstacle Race/Sprints (KS2)

The children also enjoyed launching their new sports incentive **"The Golden Mile"** – this is a safe, simple and measurable health and physical activity initiative accessible to all age groups regardless of ability. The children have created two tracks around the school field and playground that they can either walk or run around and in turn they can measure the distance they have completed and this is then entered into the website to go towards their target of walking their "Path to Paris"! The children are

awarded along the way with praise and certificates. They also enjoyed the "Water Run" this year and all four teams had to get water in a bucket from one end of the track to the other – the team with the most water left in their bucket won! They really did enjoy this!!

Kwik Cricket

A team of eight Year 5/6 pupils were selected to represent the school in a Kwik Cricket tournament held at Hadleigh Cricket Club on Wednesday 20 May. The children came a respectable sixth place enjoying playing with other schools within the Hadleigh pyramid of schools. One of our pupils received a "Fair Play" award – well done Sonnie!

Mini Tennis Tournament

Four pupils were selected to represent the school at a Mini Tennis Competition at Hadleigh High School on Wednesday 10 June. The competition was aimed at encouraging young people to participate and compete in tennis. We are thrilled to say that Bildeston came in third place and really did enjoy the tournament.

Wattisham Visit



Children in Years 5 and 6 along with the year 5 and 6 children from Whatfield CEVC Primary were invited to attend the Wattisham Flying Station Visitors Day on Thursday 21 May 2015. This took place in one of the hangers and the children had the opportunity to look at an AH Apache, historical aircraft and museum exhibits. We hope to visit the base again soon with our KS1 children!



Hadleigh Show Competition

We were thrilled to have been awarded "First Prize" in our KS2 entry to the art show and "Second Prize" in KS1. The school received a cheque for £75 towards their curriculum spending. Well done Children!!

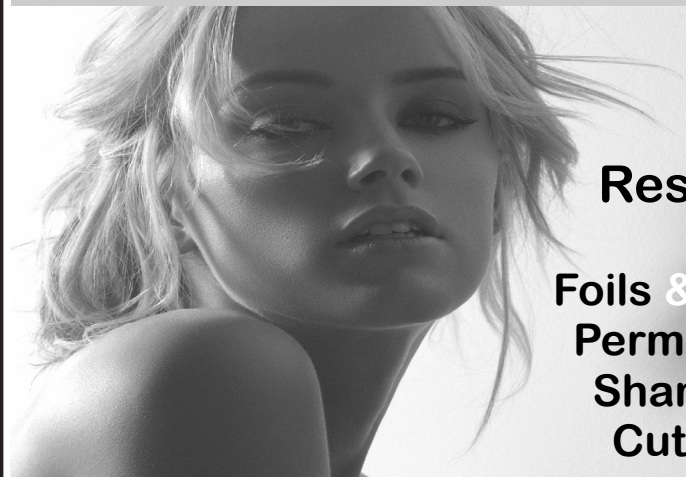
Learning and Growing Together"
Newberry Road, Bildeston, Ipswich, IP7 7EU
Telephone: 01449 740269
Website: www.bildeston.suffolk.sch.uk



BILDESTON
PRIMARY SCHOOL

Studio 66

Ladies and Gents Hairdressers



Restyling

**Foils & Highlights
Perms & Colours
Shampoo & Sets
Cut & Blow Drys**

**Friendly Service from our Professional Team
Tue & Wed Senior Citizens**

*****special rates *****

Opening Times Tues - Friday 9 - 5 pm Sat - 8 - 1pm



Tel 01449 740644

52A High St Bideston IP7 7EA



SIX ACRE PRODUCTIONS
PRESENTS

www.sixacreproductions.co.uk
Also find us on [facebook](#)

THE NEW MURDER MYSTERY

MAKE DO and MEND

Written & Directed
by
Tom Hitchcock

**with MUSIC
of the
ANDREWS SISTERS
LIVE**

contact
07508 472 142
sixacreproductions@live.co.uk

Raising money
for the



SUFFOLK COMMUNITY FOUNDATION

4, 5, 11 & 12 SEPTEMBER



7:30pm
Tickets £12.00
Price includes a
HOT DINNER

**YOU ARE INVITED TO
DRESS in 1940s
evening wear**

A BARN PERFORMANCE
Manor Farm, Semer
IP7 6JB

Courtesy of Mr. J. Buckle

PROUDLY SPONSORED BY
 **elmsett storshops**



St Mary Magdalene Church, Bildeston

Celebrating God's Creation

Pet Service

Sunday 12th July at 11.00am

Bring your pets along to a special service where we will celebrate
and thank God for them.

All very welcome from smallest to largest!



Timid pets, biting and stinging pets should be carefully confined in
cage or basket to protect them and us.

Dogs on leads please, and anything larger than a dog might be
happier tethered in the churchyard!



Karen Finch RHAD FSHAA



Hearing Problems?

Take that first step towards better hearing & book a hearing test with **Suffolk's** number one private provider for hearing care!

- Hearing assessments
- Latest digital hearing aids
- Outstanding aftercare
- Earwax removal ■ Noise protection

Your local centres:

HADLEIGH

Hadleigh Health Centre, Market Place

NEEDHAM MARKET

The Country Practice, Barking Road

**Home visits
are also
available**

Book your hearing test today!



01473 230330

■ Award Winning ■ Family Run ■ Private ■ Independent

COUNTRYSIDE OBSERVER



It's great to see our avian visitors now arrived including Swallows, Swifts though no House Martins spotted yet. A glimpse of a forked tail, white rump or shaped wing might be all you get to see of a swift, swallow or martin in the skies this summer. Although frequently confused with one another, they are easier to tell apart than you might think.

These quintessential summer visitors are a delight to watch. All can be found almost anywhere in our country at nesting sites, around towns and villages, and swooping over fields and rivers catching flying insects and other invertebrates. Although

superficially similar the following will help you sort the swifts from the swallows in no time.

House Martin - Fluttery flight and pure white rump, seen on the wing over built-up areas, water and open areas. It builds enclosed nest out of mud under the eaves of town and village buildings and perches in flocks on wires before migrating.

Swallow - Deep rusty-red chin patch and white to buff underneath with fast swooping flight with glossy blue back, head and throat. Seen on the wing over farmland, villages and open grassland and builds cup-shaped nest out of mud and straw inside barns and outbuildings. Swallows gather in flocks on wires before migrating and look like musical notes on a song sheet.

Swift - Plain brown all over, with pale throat, that appears dark against the sky. Its a very fast flier and glider with loud screaming calls and can be seen on the wing around villages, towns and open country. Swifts breed reeds in holes and crevices of old buildings and are often seen as screaming flocks in the air but never perched. The local countryside is in full late spring/early summer finery with blossoms galore. Cowslips this year seem better then ever with huge swathes to be seen along field edges and verges. Motorway verges seem especially good for those lovely flowers, the last ones are at the end of their flowering and will soon be just a memory until next spring. On a recent woodland walk I stopped to look at a clump of beautiful wood anemones. One of the last flowers of spring, wood anemones bloom like a galaxy of stars across the forest floor. As a species it's surprisingly slow to spread (six feet in a hundred years!), relying on the growth of its root structure rather than the spread of its seed. As such, it is a good indicator of ancient woodland. How to spot it.

Solitary star-like white flowers with 5-8 petals, often pinkish underneath and long-stalked stem leaves divided into three lobes, with each lobe. The Chinese call it "the Flower of Death" because of its pale, ghostly appearance. When the suburbs of London swept over the old county of Middlesex, some of its woods were bypassed and preserved. The wood anemone still blooms there to this day.

Hoverflies are particularly fond of the wood anemone and help pollinate it. Other animals, however, will only eat it if nothing else is available, because of its acrid taste. It is poisonous to humans. After a brief week of flower they die back and retreat underground for another year, catch them while you can. The trouble with this time of year is that there is so much to do and simply not enough weekends to do it.

Mike Biddulph

COUSINS & SON BILDESTON LTD

available to carry out all your building requirements
from
Renovations / Alterations / Extensions
to
General Repairs

Please contact Paul for a free estimate
01449 744360 or 07876 244461
or email paul.cousins268@btinternet.com

Tired of Housework?

COUNTRY MAIDS

A highly experienced home cleaning service

Established over 24 years, COUNTRY MAIDS
provides a service for all home cleaning from
brass, ovens, windows, kitchens and polishing.

All materials and equipment provided.

No contracts.

For a free quote telephone:

(01449) 741108

HATTERS CHIMNEY SWEEPS UK

WWW.CHIMNEY-SWEEP.ORG.UK

CHIMNEY & FLUE SWEEPING

FROM £45 INTRODUCE

A FRIEND AND EARN A

£10 DISCOUNT STOVE

MAINTENANCE

CHIMNEY REPAIRS

CCTV FLUE INSPECTION

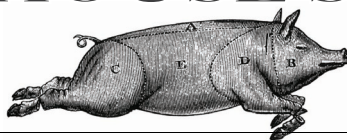
01787 281979



FAMILY GROCER PROVISIONS OFF LICENCE

BANK HOUSE STORES

Richard & Joan
O'Sullivan



telephone
01449 740403

Shop locally - and help keep Bildeston beautiful!

As part of our commitment to reducing usage of plastic bags, we are giving away a Londis Jute Shopping Bag to customers spending over £20 in a single transaction (excluding tobacco, Post Office, Lottery, top-ups or bill payments). It's always nice to get something free, so come and pick up yours while stocks last.

Save even more money with our special offers, available up to 4th of July:

Andrex Toilet Rolls	12-Pack	Only £5
Heinz Spaghetti	4 - Pack	Only £2
Lucozade/Schweppes	1 litre bottles	Only £1
Surf Concentrated Liquid	25-Wash	Only £3
Lurpak Butter	250g	Only £1.50
Tropicana Orange Juice	1 litre	Only £2
Stella Artois/Carlsberg Export	10-Pack	Only £10
Isla Negra	Chilean Wines	Only £4.99
Secretary Bird	South African Wines	Only £4.99
Jacob's Creek	Australian Wines	Only £5.50
Treviso Prosecco		Only £6.49
Grant's/Smirnoff/Morgan's Spiced		Only £13.50
Southern Comfort/Bombay Sapphire		Only £17
.....plus many, many more.		

We are open from 7am to 7pm (6.30 for the Post Office - 6 o'clock on Wednesdays) Monday to Saturday and 8.00 to 12.00 every Sunday and Bank Holidays.

Shop Locally - You need a jolly good reason not to!

B
NATURAL



Back by popular
demand and
raising funds for
B NATURAL
music festival

GARAGE SALE

WITH A BIT OF
MUSIC ON THE SIDE!

Bildeston
Saturday **11th** July
9am-12.30pm

£5

**TO GET YOUR GARAGE ON THE MAP
OR FOR A TABLE IN THE SQUARE**

SIGN UP IN THE KING'S HEAD, THE BANK HOUSE STORES
OR CONTACT nicolafenzl@mac.com

Donations of books or just about anything sell-able for the **B NATURAL**
table very gratefully received: **please contact Nicola on 741908**

BASE GARAGE LTD

MONDAY – FRIDAY 7.30 – 6.00

SATURDAY 8.00 – 12.00

- TYRES
- EXHAUSTS
- PUNCTURES
- BATTERIES
- WHEELBALANCING
- AIR CONDITIONING
- LATEST DIAGNOSTIC EQUIPMENT
- WELDING TO MOT STANDARD
- SERVICING & ALL REPAIRS TO ALL MAKES OF CARS
& LIGHT VANS FLEET DRIVERS WELCOME
- MOT CLASS 4, 5 & 7
- COURTESY CAR AVAILABLE
- COLLECTION & DELIVERY SERVICE 5 MILES RADIUS
OF GREAT BRICETT
- WINTER CHECKS
- HOLIDAY CHECKS

£10 OFF!

***YOUR MOT WITH THIS
ADVERT***

LOWER FARM ROAD, GT BRICETT, IPSWICH IP7 7DR

01473 658987 / 01473 657704



KINGS HEAD & Brewery

Nigel, Susie, Ryan and Freya look forward to welcoming you to the Bildeston Kings Head.

www.bildestonkingshead.co.uk

- **Saturday 25th July free entry:** to mark the start of the summer holidays there's a night of contemporary punk in the Beer Garden, lively three piece **Harmless Insanity**, 7pm, followed by the superb 'Steampunk' band **Metropolis**, 9pm.
- Other **free live music for July:** every **Wednesday** is **Open Mic Night** from **8:30pm**; and from **1pm on Sunday 26th** **Kevin Nightingale** will accompany your roast lunch on contemporary classical acoustic guitar.
- Our monthly **charity quiz night** is on **Thursday 30th July** at 8:30pm, please arrive by 8pm. To book a table telephone Sue or Nigel on 01449 741 434. Thanks to May's teams who raised **£60** for the Meningitis Trust.
- Our good value homemade food uses quality ingredients that are locally sourced where possible. Meals are cooked to order and available to eat-in or take-away. To reserve a table please phone **Sue or Nigel on 01449 741434**.
- We brew our own real ales on-site (tours by arrangement) with at least one other from a local independent brewer.
- Our opening times are as follows:

Wednesday	Open 6pm-12am (open mic/buskin night)
Thursday	Open 6pm-11pm (bar games night)
Friday	Open 4pm-12am (full menu 6-9pm, T/Away 5pm)
Saturday	Open 12pm-12am (full menu 12-2pm & 6-9pm)
Sunday	Open 12pm-10:30pm (roast/Sunday menu 12-3pm)
Monday/Tuesday	Closed

A huge thanks to everyone for a successful Beer Festival and for raising £322 for Cancer Research plus £200 for this year's BNatural Music Festival.

BILDESTON RANGERS FOOTBALL CLUB

Saturday May 2nd 2015 was the last day of the 2014/15 season and the First team home game was followed by the End of Season Trophy Presentation and Annual general Meeting. I would at the beginning of this article like to sincerely thank The Committee who 'conspired' for the Club awards to be made to me this time, and to the players who presented me with a lovely gift of a Pandora bracelet and card.. all of which mean a great deal and will be treasured.

The Trophies were awarded to the following...

CLUBMAN AWARD Ruth Finbow

CHAIRMAN'S AWARD Ruth Finbow

FIRST TEAM LEADING GOALSCORER Aiden Bignell

FIRST TEAM MANAGERS AWARD Danny Collis

FIRST TEAM PLAYERS PLAYER Charlie De Lara Bell

RESERVE TEAM LEADING GOALSCORER James Vowles

RESERVE TEAM MANAGERS AWARD Dan Clarke

RESERVE TEAM PLAYERS PLAYER James Vowles

At the AGM the Election of Officers took place and the following positions filled

PRESIDENT James Buckle (The Crown)

VICE PRESIDENT Nigel Fell (Kings Head)

VICE PRESIDENT Richard O'Sullivan (Bank House Stores)

CHAIRMAN Dave Munson

VICE CHAIRMAN Alan Brooks

SECRETARY Ruth Finbow

TREASURER Ruth Finbow

FIRST TEAM MANAGER Scott Lorimer

ASSISTANT FIRST TEAM MANAGER Dan Seager

RESERVE TEAM MANAGER Steve Greenacre

ASSISTANT RESERVE TEAM MANAGERS Jack Swinger and Elliot Leeder

During the season 8 well established Football Clubs that played in the same League as us folded, it was acknowledged at the AGM that the future of Bildeston Rangers FC is secure and sound and with the history and principles of the Club together with the support from the community of Bildeston, will continue to be so, striving next season to do you proud. Both teams completed the season exactly mid table in Divisions 2 and 5 respectively and the number of players who have already signed up for the club for next season is both encouraging and an indication of how much they enjoy being part of this Club.

BUGLE'S 25TH ANNIVERSARY YEAR

Carrying on with our interesting dips into the Bugle archives we go way back to July 1992 when the Bugle had a world exclusive with the news about the plans to build a new village hall!

WORLD EXCLUSIVE....WORLD EXCLUSIVE....

Your Bugle reporters are able to bring you now some very exciting news which will affect the lives of all the residents of Bildeston.

In 1975 the Brotherhood Social Club was renamed Dukes Hall and became the "Village Hall" for use by all groups within the community.

Dukes Hall has been managed over the years by a Committee who have always realised that it WAS NOT, IS NOT, and NEVER WILL BE a perfect Village Hall.

AND NOW.....After many years of careful thought and investigation, the Dukes Hall Management Committee are able to announce to the residents of Bildeston that there are plans afoot for a NEW VILLAGE HALL.

The site proposed is the meadow of Red House Farm situated between the rear of The Crown and Brookfield. Agents for Mr & Mrs Watsham (owners of the land) will seek outline planning permission for a scheme to include a hall, car park and bowls green adjacent to the Brooks footpath and some housing fronting Wattisham Road.

The question you will all be asking is....How is this to be financed?

WATCH THIS SPACE - the Bugle will bring you the news as it happens and there will be a Public Meeting in a few months' time.

P.S. We will be happy to print your comments on this matter next month.

CONTACT NAMES

Bob & June Halls 740 034

Alison Hooper 740 527

Barbara Williams

It was with the greatest sadness that recently, one of our church Elders, Barbara Williams, passed away. Barbara helped set up Mother's Union, she helped at, and was a school governor, and she ran a small toddler group, in the church, when I first came to the village. She also took the Christingle service in the church, for many years. Barbara had a very positive outlook on life and had a great faith. She helped with many fundraising events for the Church and other charities. Barbara was a very warm, chatty, and caring person who loved children. Her illness kept her away from church in her last year and she was, and will be greatly missed by family, friends and neighbours.

Teresa

Churchwarden

STOWMARKET CHORALE SUMMER CONCERT

Tickets are now on sale for Stowmarket Chorale's summer concert.

The programme is John Rutter's lovely Requiem and his less-known arrangement of folk-songs entitled The Sprig of Thyme. Soprano Angela Hicks is the soloist, William Baldry accompanies on the piano, and Leslie Olive conducts.

The concert takes place on

Saturday 18th July in the United Reformed Church, Stowmarket at 7.30pm.

Tickets costing £14 , £7 for under 18s, are available from Stowmarket Tourist Information, chorale members, or online at www.stowmarketchorale.org.uk.

Brenda and Elspeth

**would like to thank everybody who contributed
to their cake stall at the May Market.**

Pilates Classes Now Held at Kersey Mill

If you want to exercise both your body and mind as well as improving your sense of well being, strength, flexibility and mobility then I truly believe pilates is for you!

I am passionate about bringing the benefits of pilates to everyone and as a fully qualified teacher certified by Europe's largest professional pilates organisation I can help you improve muscle tone and core stability, building strength from the inside out, re-balancing the body and bringing it into correct alignment.

Please contact me if you wish to join a small matwork class and allow me and the Body Control Pilates method help you achieve your goals. Pilates can benefit anyone of any age and any level of fitness. I look forward to hearing from you.

Call 07855 394 703 for more info.

www.pilatesworks4u.com

Jenny
x



Little Krafts www.littlekrafts.co.uk

20 Bury Street, Stowmarket, IP14 1HH
(Situated at the rear of Harts Homebrew & Crafts)

- Gibsons Games & Puzzles • Melissa & Doug
- NEW House of Puzzles Range
- Classic Wooden Toys • Latest 2014 Puzzles
- Perfect Party Presents from £3.99
- Fun, Education Toys

The ONLY Puzzle Shop in Stowmarket



Tel: 01449 674888 / 07919 508715

Email: littlekrafts@yahoo.co.uk



Melissa & Doug



• Ringshall Table Tennis Club at Ringshall Village Hall. •

• Every Sunday 7.30p.m. until 9.30p.m. •

• Two tables in use, adults £2-50 under18 £1 •

• Tea, coffee, refreshments incl. •

• All standards of play Welcome •

• Contact Maureen Wills 01473 658936 •

• Jill Smith 01473 658463 •

• Bill Dewick 01473 658009 •



BILDESTON COMMUNITY CYCLING

TUESDAY EVENING RIDES

Start at 6.45pm from the Market Square, and last about an hour. There are two groups of riders.

A SLOW RIDE, starting at 6 to 8 miles, specifically for new and returning riders, at a speed to suit the riders. Walking on hills is allowed, and no Lycra is necessary!

WHY NOT COME ALONG WITH A FEW FRIENDS? YOU MUST HAVE A BIKE IN THE SHED, OR ONE YOU CAN BORROW.

A REGULAR RIDE of 15 -20 miles for more confident riders.

If you used to cycle, or want to start, why not join us this year? Just turn up at the Market Square. If you have any queries, please contact Robin Weaver on 01449 741048.

We regret no children under 12, no unaccompanied children under 16.

Dentist

Paul Rolfe BDS

Veneers & Crowns in a
single visit

Dental Implants

Family Dentistry

**Lavenham &
Long Melford**

01787 882722

www.paulrolfedental.co.uk

\$TUDIO 66

• Would like to welcome Tracey Cutting to the Team!

• Tracy trained at John Oliver's In Ipswich, and brings a wealth of experience as a Stylist to Bildeston she has come highly recommended as a colour technician.

• Tracy will be in the \$TUDIO 66 Saloon on Wednesdays and Thursdays, so when you're next in need a restyling, trim or a colour, do come in or phone to make an appointment with Tracy or one of the team, we look forward to seeing you soon !

• Tel 01449 740644

CPH GARDEN SERVICES

*All Jobs Considered, Large & Small
Sheds & Summer Houses
Garage/Office Space Projects
High Quality Wood Construction
Grounds Maintenance*

Please contact me to discuss your needs
and obtain a no obligation quotation.

Telephone: Paul 01449 740020

Telephone: Chris 01787 210536

Email: chris.harman1990@gmail.com

P.D. ROSE.

Plumbing / Heating & General Building

- Plumbing & Heating Repairs
- Complete Bathrooms & Tiling
- Int. & Ext, Decorating
- Building Maintenance

Tel. 01787 211042

Mob. 07974 290697

3. Fen Street, Boxford, CO10 5HL



Done & Dusted Cleaning Service



*We are a professional, reliable, recommended
family run business offering*

- Domestic Cleaning – regular cleaning or one off spring cleans.
- Small office cleaning
- Ironing service – Collected and delivered back to your door
- Oven Cleaning
- We can take you to the shops or collect your prescription etc. to make your life easier.

Please Call Us On:

Office 01449 258574/Mobile 07775 029579

THE BUGLE INTERVIEW

The Bildeston Bugle has the privilege of being the first publication to interview our newly elected Member of Parliament, Mr James Cartlidge MP. Speaking exclusively to the Bugle Mr Cartlidge took time out during his first weeks as a member of the new parliament to answer our questions.

- Firstly, congratulations on being elected as our Member of Parliament. How does that sound and feel after such a long campaign from selection to now?

It sounds like a great honour and I really do feel extremely privileged to have been elected to represent this fine constituency, especially as it is the one in which I live.

- What was it that drew you to the world of politics in the first place?

Politics operates on so many levels – from the local to the national and global, from the very practical to the deeply theoretical – but I suspect most people who are interested from a relatively young age are attracted to the battle of ideas. I was fascinated by the cold war and the old divide which we hope has now passed, but ideas and principles are still the fundamental framework for policy. Ultimately, I am doing this to try and make a really positive difference to the lives of my constituents, but that position is informed by certain key principles – for example, a belief in free enterprise and the spirit of getting things done rather than relying on others. Most of the good things that will happen in South Suffolk in the years ahead will have very little to do with me or the Government. Instead, they will be the direct result of the efforts and actions of individuals and communities.

- What kind of MP do you hope and plan to be?

I aim to be an MP who is in touch with his electorate, and hard-working on their behalf. It is also important that I am fair and committed to representing all of my constituents, regardless of whether they are supporters or not.

- Given your understanding of the issues as a resident of South Suffolk, what do you feel are your priorities, beyond the items you shared in your campaign, as our newly elected MP?

I set out some key priorities in the election campaign and rather than looking beyond them I think the key thing is working out how to make some substantive progress. I referred frequently to broadband speed, transport and attracting businesses to the area that are able to create well-paid jobs for young people. They all need a lot of work! That said, in the campaign I picked up key issues I had not given as much attention to, in particular, bus services. Additionally, I am keen to focus on our main public services.

This week I am meeting more schools (I aim to visit every school in the constituency), and I am also meeting two of our most significant players in local health services. The most important point for me at this early stage is to listen and learn from those at the coal-face.

- What do you feel are the reasons for the ‘unexpected’ success of the Conservatives in the election?

It was not unexpected to me! It was clear on the doorstep that people were nervous about an outcome that would have left us with an uncertain and unstable coalition. People looked at our economy – which is not perfect, but is far stronger than it was five years ago, and far stronger than many other countries – and decided to stick to a Government that they saw as doing a good job in difficult circumstances.

- How do you feel about the moment you speak for the first time in the House of Commons?

I am looking forward to it, but it could still be some weeks away, as is often the case.

Not that long, as it turned out, see below!

- Your predecessor, Tim Yeo, is on record as being supportive of the Bildeston campaign to manage property development in the village. Given your specific knowledge in this area, your views on re-balancing the housing market and your attendance at the Chelsworth Parish Council meeting, where do you stand on this issue?

Specific planning applications are the statutory responsibility of Babergh, not the MP, but of course I take a huge interest and it is of direct relevance where policy seems to be at stake. For example, Babergh’s policy is brown site first and greenfield in very specific circumstances. Additionally, all development must be proportionate. Hence, whilst it was a matter for the council, I did welcome the verdict on Rotherham Road as there was a big question over proportionality. I also believe strongly in ‘rebalancing’ as you say – that is, reducing the attractiveness of buy to let. For every billion that goes into buy to let, more pressure is placed on house prices and more pressure is felt in the villages in counties which are within commuting distance to London, i.e. Suffolk.

- At the start of your time as MP what message do you have for the residents of Bildeston and this corner of your constituency?

I look forward to representing the people of Bildeston to the very best of my ability.

At such a busy and exciting point in his schedule, huge thanks to James Cartlidge MP from the Bugle for the interview.

Congratulations, also, from the Bugle on his performance at Prime Minister’s Questions on Wednesday 24th July. Could that be the first time the village of Bildeston has been mentioned in the Houses of Parliament?

BARGEWELL SKIP HIRE

2 - 8 yard skips

1 ton waste bags

We also collect any full waste bags

Long or short term hire

Delivery 7 days a week

Fast & friendly service

Stowmarket 01449 615056

Mobile: 07770 452378

High Rd, Gt Finborough, Stowmarket, Suffolk

www.bargewellskiphire.com

Credit cards accepted

CHIMNEY SWEEP

ECO SWEEP

CHIMNEY SERVICES

NEW POWER SWEEPING METHOD USED
FOR A MORE THOROUGH CHIMNEY CLEAN
THAN BRUSHES.

INDUSTRIAL HEPA FILTERED VACUUM.

FULLY INSURED.

INSURANCE RECOGNIZED CERTIFICATES ISSUED.

SPOTLESS, RELIABLE AND FRIENDLY SERVICE.

ALL CHIMNEYS, WOOD BURNERS, AGA, BOILER

FLUES SWEEP.

GUILD OF MASTER SWEEPS CERTIFICATED MEMBER.



Power sweeping



TEL. 01359 232335

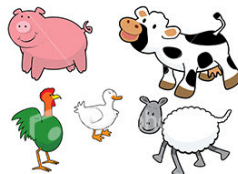


Bildeston Ladies Club!

The weather was on our side and we enjoyed a rare glimpse of Summer for our Bowls evening in June. We had a great turnout of members and guests and everyone joined in on the green – some of our ladies

proved to be quite handy with the woods and we all managed to aim in the right direction, even after a glass or two! Our thanks to Adrian and his “professional” bowls experts David, Roy and Michael who gave us all a fun evening. Some ladies were keen for another go, so watch this space for details of future events!

On July 2nd we will be visiting Hollow Trees farm shop for a behind the scenes tour. We will meet in Chamberlin Hall car park at 7p.m to share lifts. There may be a few places left on this trip, so give me a call if you are interested.



Jo Silburn 740504 (Bookings Secretary)

DIARY DATE :

Thursday July 2nd Trip to Hollow Trees farmshop 7p.m.

Stuart Walker

Decorating, Painting & Refurbishments



A locally based company offering an honest and reliable service

Painting - Decorating - Refurbishments - Repairs

All work considered indoors & out! Fully Insured & free quotations provided

Please contact Stuart on Tel: 07711 606464 or 01449 740387

Email: stuma1@hotmail.co.uk

Workshops in July

Brook Farm Studio



Website: www.brookfarmstudio.co.uk
email: brookfarmstudio@gmail.com

Sat 4th July Painting for all ages & abilities

10.00am to 1.00pm £10

Creative Embroidery - Sat 11th

1.30 - 5pm £22.50

Figurative Drawing- Sat 18th

10.00am- 1.00pm £10

Pottery - Sat 18th 2pm-4.30pm £20

Regular weekly classes in July:

Wednesday - Craft £6

Thursday - Felt & Textiles £8

Friday - Painting £8

All 10am - 12.30pm

Booking essential call Hazel on 07432 138966 or 01473 823819

Canine Wellbeing At The Pheantry

Wattisham, Suffolk IP7 7LA

Dog and Puppy Day Creche

We provide a very special service of looking after your dog or puppy. In the comfort of our own home, whilst you are at work, or whilst your dog is recovering from veterinary treatment. Why not allow your puppy to socialise with other canine friends. Daily collection and delivery is available.

Dogs on Holiday

Whilst you are on holiday, why not let your canine friend have one too. She/he can come and stay in the comfort of our own home, where she/he will be treated as one of the family.

Also available

Canine Hydrotherapy

For more details phone:

01449 740659 mobile 07956286056

or visit our website: www.caninewellbeing.co.uk

Heating Oil



*...Wish I could just
get 200 litres*

*Hmm...I've still got
3/4 of a tank of oil..
What a waste!!!...*

*What can I do??..
Ahh an uplift!!..*

SOLD



**Brrrrrrrr!!
NO HEATING OIL**
the boiler won't start!!



01473 558854



www.badgerfuels.com





Whatfield Players will be holding

AUDITIONS

For a part in their next production

A Pantomime to be performed at the end
of November

1st Audition Wednesday 1st July 7.45pm at
Whatfield Village Hall

2nd Audition Monday 6th July 7.30pm at the
Salvation Army Hall, Whatfield

Come and join us – all are welcome

Telephone 01473 822000 for more info

Free Hearing Checks in Bildeston

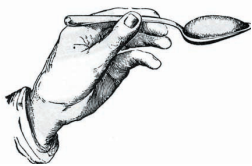
This July residents of Bildeston and surrounding villages will have the chance to have a routine hearing check, as a mobile clinic pays a visit to the area.

The hearing checks will be provided free of charge by local specialists, The Hearing Care Centre, in a large mobile hearing unit, purpose built for getting out and about in the local community to raise awareness about the importance of hearing.

The Hearing Care Centre unit will be stationed at Bildeston Health Centre, off the main street through the village, on Tuesday 28th July 2015 between 10.00am-4.00pm.

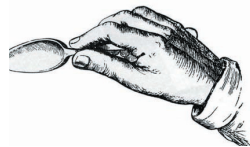
Specialists will be on hand to offer free advice on hearing related matters and well as offer a quick hearing check.

For more information call (01473) 230330.



Recipe of the Month

Creamy Honey Mustard Dressing



Ingredients

- 4 Tablespoons Mayonnaise
- 2 Tablespoons Runny Honey
- 2 Tablespoons Dijon or Wholegrain mustard
- Salt and freshly ground black pepper to taste
- 2 Tablespoons Cider Vinegar
-
- This dressing is delicious drizzled over a green or mixed leaf salad tossed with such toppings as toasted flaked almonds or chopped pecans, dried sweetened cranberries or sultanas, mandarin orange segments and sliced spring onions!

Method

1. In a small bowl combine mayonnaise, honey, mustard and seasoning; whisk until well blended
2. Add the vinegar and whisk again.
3. Cover and place in the fridge until ready to use. It will last in a fridge for up to a week.



WALL TO WALL BUILDERS

Experienced, Professional & Reliable

- Extensions

- New Builds

- Listed Buildings

- Loft Conversions

- Kitchens & Bathrooms

- All Renovation Work
& Repairs

Richard Bateson

M: 07799 114814

T: 01449 741510

richardbwtw@gmail.com

www.walltowallbuilders.co.uk

HONEY BEE'S NURSERY

Hitcham Village Hall, Hitcham, IP7 7NE

FOR CHILDREN AGED 2 – 5 YEARS

Open Mon, Wed, Fri 9.15a.m. – 12.15p.m. or 3.15p.m.

Tues, Thurs 9.15a.m. – 12.15p.m.

Early Drop Off – 8.30a.m. Lunch Club Daily until 1.15p.m.

Fee's @ 2.50 per hour (3 hour session = £7.50)

2 Indoor Rooms and Outdoor Areas

Ofsted Registered

Early Years Funding accepted for all 3 & 4 year olds

2 year old funding may also be available

Free Taster Session Available

Contact: Sharon Scarfe 01449 740764 (hall) 01449 740581 (home)

THE PARISH OF BILDESTON AND WATTISHAM

**BILDESTON PRODUCE SHOW
Monday 31st August 2015
AT ST MARY MAGDALENE CHURCH**



**THINKING OF ENTERING?
THERE IS SOMETHING FOR EVERYONE
ENTHUSIASM IS THE ONLY
QUALIFICATION NEEDED
FOR ENTRY**

**Entry forms including full information
available NOW at
BANK HOUSE STORES
Closing date for entries
12 NOON FRIDAY 28TH AUGUST 2015**

BILDESTON COMMUNITY CYCLING
IN ASSOCIATION WITH
CYCLE CLUB SUDBURY

BILDESTON CYCLING FESTIVAL

SATURDAY 18 JULY, FROM THE SPORTSFIELD

- 8.30am: 210k Suffolk Lanes Extravaganza
audax ride**
- 8.45am 168k 100 miles of Suffolk Lanes audax
ride**
- 9.30am: 105k Bildeston Lanes audax ride**
- 2.00pm: 25 mile Bildeston Challenge ride
Quiet roads, and a cafe stop**
- 2.30pm: Bildeston Family Challenge rides
5 or 11 mile routes
Quiet roads after you leave the village
Or just bring the children for a ride
around the Sportsfield; refreshments!**

**Audax rides, open to all, in conjunction with AudaxUK; see
www.aukweb.net/events for details of how to enter.**

**All other rides: just turn up and register. £3 entry for 25
mile ride for local hospices; family rides free.**

Helmets compulsory for all children.

No unaccompanied children under 16 years old.

Further information: Robin Weaver; 01449 741048; pamandrobinw@gmail.com



Local Caring Independent Funeral Service

24 Hour Personal Service * Private Chapel * FREE Parking

www.andrewbingham.co.uk

01449 771666

The Nutshell, Milton Road South, Stowmarket, IP14 1EZ



Golden Charter
Funeral Plans



BILDESTON ELECTRICAL

Rewires, Extensions, Board Changes or New Installations

Any Alterations to Existing Installations

(lights, sockets, etc.)

Contact Ian

01449 743664 or 07754 723685

- ❖ Home Maintenance
- ❖ Carpentry
- ❖ General Building Work
- ❖ Brickwork & Blockwork
- ❖ Stonework
- ❖ Hand Built Sheds
- ❖ Floor & Wall Tiling
- ❖ Paving & Patios
- ❖ Kitchens & Wardrobes
- ❖ Pergolas
- ❖ Carpentry
- ❖ Bespoke Fencing
- ❖ Property Maintenance
- ❖ Repairs
- ❖ Advice & Planning
- ❖ Shop & Office Fitting
- ❖ Renovation Work



Bob Buckle
Carpentry & Building Services

Bildeston - Suffolk.

For a prompt & reliable service.



01449 740275 or 07580 753020
Email: bobbuckle10@gmail.com

BILDESTON PARISH COUNCIL

DRAFT Minutes of the meeting of Bildeston Parish Council

held on 8th, June, 2015 in Chamberlin Hall at 7.30 pm



In attendance:

Councillors: A Guttridge (Chairman) P Bullen, D Dempsey, D Drury, A Hubbard, R Lester, R Taylor

Also Present: D Blackburn (Clerk) County Councillor Mrs J Antill, District Councillor M Creffield, Two local residents

Councillor A Guttridge, the Chair of the Parish Council, opened the meeting and welcomed everyone present.

C24/15/16 APOLOGIES FOR ABSENCE

There were no apologies for absence.

C25/15/16 DECLARATIONS OF PECUNIARY AND NON-PECUNIARY INTERESTS

Councillors Taylor and Lester declared non-pecuniary interests as members of the Kings Pightle Management Committee and Sportsfield Management Committee. Councillor Drury declared a non-pecuniary interest by reason of being a member of the Sportsfield Management Committee. Councillor Guttridge declared a non-pecuniary interest by reason as a member of Chamberlin Hall Management Committee.

C26/15/16 DISPENSATIONS IN RESPECT OF PECUNIARY INTERESTS

There were none.

C27/15/16 MINUTES OF PREVIOUS MEETING

It was AGREED: That, subject to the inclusion of Councillor Hubbard in the list of persons present, the minutes of the meetings held on 11th May, 2015 be signed by the Chairman as a correct record, and all the decisions contained therein, be ratified.

C28/15/16 POLICE REPORT

There had been no incidents reported during the period 1st May to 31st May 2015.

C29/15/16 COUNTY COUNCILLOR'S REPORT

Councillor Mrs Jenny Antill reported on the following matters

- The County Council was seeking to find out, whether the government would consider granting more devolution and greater autonomy for councils other than metropolitan boroughs;
- A new website had been launched by the County Council and the feedback received during its first month of operation had been positive (www.suffolk.gov.uk);
- The existing waste management agreement between Norfolk and Suffolk had been extended with an extra 40,000 tonnes of waste to be processed at the Great Blakenham plant;
- While pointing to some areas of improvement, the most recent letter received by Suffolk Education Department from OFSTED criticised the County Council for the speed at which educational standards were being turned round. A further £800,000 would be considered to support the Raising the Bar initiative at the next cabinet meeting;
- "Junior Road Safety Officer" awards would be presented to the children at the Bildeston Primary

School on Friday, 26th June, 2015;

f. The new “Bildeston’ road sign had been installed on Ipswich Road;

g. Monies had been allocated through the “Expanding Communities Fund” with £4,000 available for facilities at the Parish Church. This was slightly less than the amount originally applied for as the fund was over-subscribed and awards had to be scaled down.

In response to a question about progress with traffic calming measures, Councillor Mrs Antill undertook to support the Parish Council’s enquiries regarding the provision of a Vehicle Activation System (VAS) in the village. It was noted that the Parish Council had agreed previously to procure the equipment (Minute 234/1415 refers), once it understood which equipment would best meet its requirements.

It was AGREED: That the Clerk be requested to liaise with Councillor Mrs Antill and enquiries be made of the County Highways Department with regard to VAS equipment.

C30/15/16 DISTRICT COUNCILLOR’S REPORT

Councillor Mike Creffield had liaised with planning officers at Babergh District Council about the two planning applications considered at the previous meeting, regarding which, the Parish Council had lodged objections (B/15/00382 and B/14/01271 refer). In accordance with normal practice, he confirmed that he would ‘call in’ both items in for decision by the Planning Committee.

A communication had been received from Babergh’s locality officer for Bildeston, Tracy Brinkley. Councillor Creffield was advised that there was an “open invitation” for her to accompany him at future meetings if she could assist the village in any way.

C31/15/16 BNATURAL 2015

Mr Nick English and Mrs Elaine Talbot reported on proposed arrangements for BNatural which would be held on 12th & 13th September 2015. The income and expenditure account for 1st January to 31st December 2014 was presented which showed a move from profit for 2013 to a small deficit for 2014. This had arisen principally from making the event free to attend in all areas alongside increased costs of musicians, equipment hire and catering costs. However, the event now better fitted its guiding principle of being an open and inclusive community event.

Members of the Parish Council recognised and praised the tremendous achievements of the organisers in holding such a high quality music event in the village each year.

It was AGREED: That the Parish Council supported in principle:

- a. The award of a grant of £500 towards BNatural 2015 (the item to be included on the agenda for the next meeting for formal approval);
- b. An application for a road closure order in respect of the Market Place and neighbouring roads; and
- c. An application for a temporary event notice for the event.

In addition, the Parish Council approved the use of part of of the Market Place for a garage sale on 11th July, 2015.

C32/15/16 WHAT’S ON NOTICEBOARD

Further to Minute 15/15/16, the Parish Council considered the most appropriate location for providing a new “What’s On” noticeboard in the Market Place.

The consensus was that the preferred location was to the south east of the clock tower on the right hand side of the arch, mirroring the existing Parish noticeboard on the other side of the arch. The Kate Chamberlin plaque would also be re-erected as part of the proposals.

It was AGREED: That the procurement of a new “What’s On” noticeboard and its siting along with the re-siting of the Kate Chamberlin plaque if required, be delegated to the Clerk, in consultation with the Chairman.

C33/15/15 STREET LIGHTING IMPROVEMENTS

Further to Minute 21/15/16, Councillor Taylor reported that following consultation with the County Council, it had been established that the original works had been programmed with the contractor and hence a change to the cabling was not possible. The Clerk had placed an order for the works at a cost of £3,984.

C34/15/16 CEMETERY ADMINISTRATION

Councillor Hubbard provided an update on arrangements for administration of the cemetery and invited the Parish Council to consider the fees that were chargeable.

It was AGREED: That the following cemetery fees be applied with immediate effect:

Part A: Burials		
	Fee for persons reside, or have resided in the parish, for a period not less than 12 months	Fee for persons who have <u>not</u> resided in the parish for a period of 12 months
First burial	£130.00	£260.00
Second burial in double grave	£65.00	£130.00
Reserve for a period of not less than one hundred years, a burial plot in advance of use	£130.00	£260.00
Ensure exclusive rights for burial in a plot for a period of not less than one hundred years	£130.00	£260.00
Notes: i. Exclusive rights of burial shall only be granted in respect of the same, or the next adjacent row, to an existing burial plot. ii. Discretion may be exercised by the Clerk in consultation with the lead Councillor for the cemetery, in respect of the residential qualification identified above, where a person has a clear and demonstrable link with the parish of Bildeston.		

Part B: Cremation		
Designated cremation plot	£100.00	
Part C: License to Erect Memorials		
Memorial plaques and stones	Memorial stone up to 107cm in height	Memorial tablet 37cm x 37cm
	£75.00	£40.00

C35/15/16 PLAYING PITCH STRATEGY

Councillor Drury reported that the Sportsfield had been inspected by a representative of the consultants appointed by Babergh District Council to prepare the Playing pitch strategy. The strategy would be used to support the case for developer contributions towards playing pitches in the district.

It was AGREED:

That Councillor Drury would make enquiries of the consultants to establish the breadth of the study and whether or not it should include other playing facilities in the village, beyond the Sportsfield.

C36/15/16 VILLAGE AMENITIES AND OPEN SPACES

The Annual General Meeting of the Sportsfield Management Committee was due to be held on Wednesday, 10th June, 2015. A Summer Solstice fund-raising event would be held at the Sportsfield on Saturday, 20th June, 2015.

There was a broken hinge on one of the bins at the Coronation playground. Councillor Hubbard remarked on the voluntary contribution made by Bernice Hawthorne who litter picked the Coronation playground each week.

It was AGREED:

- That a new litter bin be procured and installed at the Coronation playground to be funded from the Skate Park Fund; and
- That a letter be sent to Bernice Hawthorne thanking her for her dedicated services to the local community in conducting litter picks at the Coronation playground and offering to provide her with a free supply of sacks so that the Parish Council meets her expenses.

C37/15/16 CLERK'S REPORT

The Clerk reported on the following:

- An invitation to attend a farm tour from James Buckle which would be held on Friday, 26th June, 2015 at 6.00pm. Regrettably, the invitation had been received after the deadline for the current edition of "The Bugle".
- Correspondence sent to the Grounds Maintenance Coordinator recording changes to the nature of his duties, as agreed at the previous meeting, including the arrangement of safety training as recommended by the supplier of the ride-on mower.
- Emergency planning arrangements for the village.
- A proposal to outsource payroll and pensions administration in respect of the Clerk and the Grounds Maintenance Coordinator.

It was AGREED:

- That the Parish Council will support other agencies in facilitating appropriate response arrangements should an emergency occur that affects the village; and

b. That the Clerk be authorised to enter into an agreement with the Suffolk Association of Local Councils for the provision of a payroll and pensions administrations service to the Parish Council.

C38/15/16 RESPONSIBLE FINANCIAL OFFICER'S UPDATE AND AUTHORISATION OF PAYMENTS

The Clerk reported that the insurance policy had been renewed with a new insurance provider, AON UK. Under the terms of a three year agreement, there had been a significant saving achieved on the premium compared with previous years.

It was AGREED:

a. That the following payments be authorised be noted:

Payee	Description	Budget Category	Amount (incl. VAT)
David Blackburn	Clerk's Pay	Salaries & Expenses	173.09
Adrian Chinery	Grounds Maintenance	Salaries & Expenses	358.57
Adrian Chinery	Expenses relating to mowing equipment	Playgrounds & Open Spaces	62.00
David Blackburn	Clerk's Expenses	ICT & Website	35.00
Equity Red Star	Ride-on Mower Insurance	Grounds Maintenance	289.22
HMRC	PAYE (Feb-Apr)	Salaries & Expenses	348.64
AON UK Ltd	Parish Council Insurance	Insurance	705.78
Chamberlin Hall	Hall Hire 2015/16	Hall Hire	470.00
Community Action Suffolk	Subscription 2015/16	Subscription	30.00
Tomlinson Groundcare	Mower Repairs	Grounds Maintenance	129.19

(Note: All items of expenditure to be met from the General Fund).

b. That a receipt of £110 be received from the East of England Cooperative Society in respect of burial.

C39/15/16 PLANNING APPLICATIONS

Planning Appendix A: Planning Applications Consultation

Reference	B/15/00476
Address	64, Brookfield, Bildeston, IPSWICH, IP7 7EJ
Proposal	Erection of single storey rear extension, regularisation of side porch & rendering of property
Response	No objection (submitted by Parish Clerk response ratified at the meeting)

Reference	B/14/00566
Address	174 High Street, Bildeston, IPSWICH, IP7 7EF
Proposal	Removal of 1 No. Ash tree.
Response	No objection

Reference	B/15/00373
Address	Annexe, 128 High Street, Bildeston, IPSWICH, IP7 7BH
Proposal	Application under Section 73 of the Town & Country Planning Act (1990)-To remove/vary condition attached to Planning Permission B/05/01756/FHA- Removal of Condition 2 to allow use as a permanent dwelling.
Response	No objection

Planning Appendix B: Determined by Babergh District Council

There had been none notified by the Planning Authority.

C40/15/16 MATTERS TO BE BROUGHT TO THE ATTENTION OF THE COUNCIL

Councillor Dempsey reported concerns regarding the line and access to footpath number 3 at Tankard Farm and undertook to liaise with the Rights of Way Officer.

Councillor Hubbard was reviewing the use of the three brown bins at the cemetery and whether or not they were all fully used. Councillor Bullen agreed to produce some laminated notices indicating "Waste only - no wire or plastic" (or similar wording).

Councillor Taylor commented upon the unacceptable lack of notice provided in respect of the closure of Wattisham Road for works to be undertaken to a property on the road. He also felt that the complete closure of the road seem unnecessary given the disruption caused to local residents. Members of the Parish Council felt that a letter should be sent to the County Council on behalf of the local community.

Councillor Drury reported that a lilac tree that had been overhanging the footpath through to Smock Meadow had been cut back by the owner of the property. She was currently seeking to deal with other over-hanging plants and bushes.

There was a brief discussion about the work of and progress of the Neighbourhood Planning Group.

C41/15/16 PUBLIC SESSION

There were no issues raised

C42/15/16 CONFIDENTIAL BUSINESS

Following the exclusion of the public in accordance with the Public Bodies (Admissions to Meetings) Act 1960, Councillor Dempsey provided an update and arrangements for the management and control of funds from the bequest was discussed.

The meeting closed at 9.56pm

Zor Boutique



unning jewellery, scarves,
gs, purses, clothing & shoes.
l at affordable prices.

Call: 07969525859

Web: www.zoronline.com

Email: zoronline.sales@gmail.com

Kersey Mill, Stone Street IP7 6DP

(Near Hadleigh)

THE FLOWER SHOP

AT KERSEY MILL

Local and Nationwide deliveries available

☎ 01473 805156

At The Flower Shop our team create all aspects of Floristry from bouquets, arrangements, baskets, wedding and sympathy flowers.

Our florists create beautiful arrangements just for you. We use fresh seasonal flowers, purchased daily in all bouquets, baskets and arrangements.

Visit The Flower Shop today, order online, call and collect or arrange a delivery.

 www.theflowershopkm.com

 sales@theflowershopkm.com

The Flower Shop at Kersey Mill, Ipswich Suffolk IP7 6DP

D'ENZA



HAIR & BEAUTY SALON
AT
"KERSEY MILL"

"July Offers"

1: Holiday Special Offer ~ Luxury Manicure & Pedicure with ½ leg & Bikini wax.

Special Price of only £49

2: Holiday Special Offer ~ Shellac Gel Nail shape & paint Manicure & Pedicure with ½ leg & Bikini wax.

Special Price of only £49

As the hair offers have been very popular we are extending these through July.

3: Hair~ Wash, Cut & Style 40% only in July

Special Price of only £15.90

4: Men's Hair cuts only in July.

Special Price of only £8

The above offers can not be used with another offer.

Please find us on facebook: [denza.hairbeauty@facebook.com](https://www.facebook.com/denza.hairbeauty)

Please telephone for more information or make a booking on: **01473 829069**

Email: info@denzahairandbeauty.com or visit us on Facebook or Twitter for our special offers.

For opening times & brochure please look at our website: www.denzahairandbeauty.com



O.P.I



Kersey Mill, Kersey, Ipswich, Suffolk. IP7 6DP.

A letter from Bildeston Rectory...

On a cold day in March not long after I came here, Gotelee's the solicitors asked me to take a simple graveside funeral for a lady who lived in Brookfield. The solicitor did not expect that anyone would be there for Gertrude Tingey as she died in her old age, the last of her family and there was no one else to arrange for her burial but him. The sun shone, though the wind was biting, as I arrived at The Grove for the burial and it was a pleasant surprise to see a whole crowd of people from Bildeston there to remember her. She was loved and cared about by her neighbours, and all those who knew her turned out to honour her life and say goodbye.

We had another pleasant surprise a couple of months later. Gertie still managed to reach out to her closest neighbours and to the church in her will and left us some money. I thought you might like to hear this heart-warming news as the money that the church was given will help towards the target sum needed to install cloakroom and kitchenette facilities in the church. We are getting closer and have also been helped with a grant from Suffolk County Council - from what is called 'Empowering Communities Fund' for which we are also very grateful. Another piece of really good news is that we do have a Churchwarden again. Teresa Lester was licensed this week and I am still hoping that very soon we will have someone else alongside to help her. As Teresa was licensed, along with wardens from all over the area, we were told it is a special vocation to be a churchwarden, a calling from God to be there for the church in this way. So I am watching out to see who else God is calling! I think I can also safely say we have appointed Sally as our Verger to help at funerals and weddings.

In July we have some special things taking place at the church. The first is a Pet Service on July 12th at 11a.m. All are welcome - people and animals: reptiles, mammals, insects and even the pet goldfish if you can safely bring it with you. You can ride your horse up the hill to visit the churchyard. And if you are reading this Kenny (the Boss) Chihuahua from SESAW you are welcome too. I would love to meet a dog who can dictate letters to the Bugle as well as you! On July 19th we celebrate our patron saint - Mary Magdalene and find out why she is the perfect person to give her name to our church. It will be our opportunity too, to say thank you to all who are connected with the church in any way, who help or attend, who donate or clean - or for you if you would like to be involved in any way. And I'm hoping we'll have some special refreshments afterwards to enjoy together.

Yours, Rev Liz

Table Top Sale for Nepal
Saturday 11th July Baptist Church car park.
Items to donate can be left at the Baptist Church

The United Benefice of BILDESTON w WATTISHAM
WHATFIELD w SEMER, NEDGING and NAUGHTON

Rector: Revd Liz Law

7 Chamberlin Close, Bildeston, Ipswich, IP7 7EZ

Tel: 01449 740085 rev.liz@btinternet.com

CHURCH SERVICES – JULY 2015

5th July Trinity 5	11am	Benefice Communion Service	Whatfield
12 th July Trinity 6	11am	Pet service	Bildeston
19 th July Trinity 7	11am	Parish Communion for St Mary Magdalene Day	Bildeston
26 th July Trinity 8	11am	Morning Prayer	Bildeston
2nd August Trinity 8	11.00am	Morning Service	Bildeston

Weekly Prayer

Wednesday, 9.30am – Whatfield Parish Church

Baptist Church, Duke Street, Bildeston

Jim Haley tel: 01449 740716 email: bildestonbc@gmail.com

Service every Sunday morning at 10:45

Lunch Club: at 12:30 on the **first Wednesday** of each month –

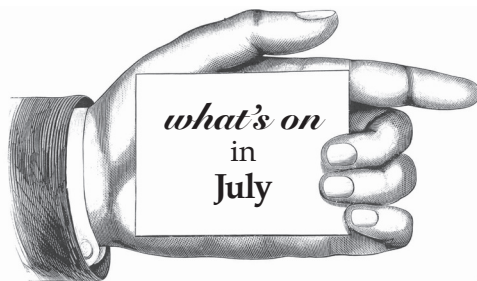
All are most welcome

Community Coffee Centre: Every Friday from 09:15 to 11:30

Enjoy meeting old and new friends at these events!

‘Craft it Together’ - Every Monday at 7pm.

Bring along your craft activities and join us for an informal, relaxed evening -
share ideas, gain new skills or just enjoy doing your own thing.



Bildeston Community Coffee Centre

Baptist Church 9:15-11:30 **Every Friday**

Lunch club 12.30pm.....**1st Wednesday each month**

Craft it Together

01449 740716 for details.....**Every Monday**

Strollers & Striders

Baptist Church Car Park 10:00 **Every Monday**

Baby & Toddler Group

Baptist Church 9:15-11:30 **Every Tuesday**

Tuesday Evening Bike Rides

6.45pm Market Square.....**every Tuesday**

Ladies Club

Behind the scene at Hollow Trees Farm.....**Thurs 2nd**

BNatural Garage Sale

around the village 9.00 to 12.30pm.....**Sat 11th**

Nepal Table Top Sale

Baptist Church.....**Sat 11th**

Pet Service

St Mary Magdalene Church 11.00am.....**Sun 12th**

Bildeston Cycling Festival

Sportsfield 8.30am onwards.....**Sat 18th**

Free Hearing Check

Bildeston Health Centre.....**Tues 28th**

Men's Breakfast

Baptist Church 8:00am **Last Saturday of the Month**

More details on events inside.

Please tell us about your events in August

email: editor@bildestonbugle.co.uk



When you're finished with this Bugle please pass it on or recycle it.