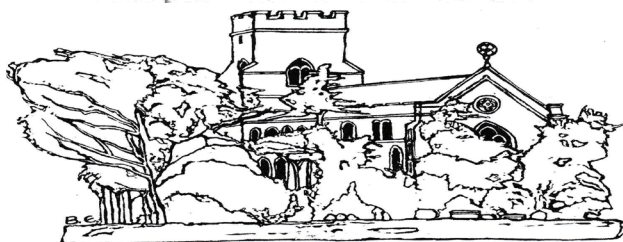


**This issue kindly
sponsored by -**

**Barry and Laura Harman
to celebrate their first
wedding anniversary**



Saint Mary's Church, Bildeston, Suffolk.

The village magazine produced for the people of Bildeston



BILDESTON BUGLE ADVERTISING AND FREE CONTRIBUTION INFORMATION

Our aim is to provide every resident in Bildeston with a magazine which provides information of local interest FREE OF CHARGE. To that end we are required to be efficient in the space we use to print free notices. We endeavour to include interesting items, announcements for events open to the general public for free and items of a charitable nature free of charge. Ongoing free announcements need to be reduced to minimum size or make a contribution towards printing costs. Please check with us before submitting your advert and ALWAYS provide us with all of your contact details in order for us to send a receipt.

email: editor@bildestonbugle.co.uk

Sponsor a 'Bugle' – £15 per issue

includes a brief message of your choice on the cover of the magazine

Advertising Rates

	1 issue	6 issues (15% disc)	12 issues (30% disc)	
1/4 page	£3.00	£15.00	£26.00	65mm W x 92mm H
1/2 page	£6.00	£30.00	£50.00	134mm W x 92mm H
Full page	£12.00	£60.00	£100.00	134mm W x 190mm H

THE SMALL PRINT

All adverts, payments and items are required by the 17th of the month for inclusion in the following month's issue. The earlier free contributions are received the greater the chance of inclusion. Please make cheques payable to Bildeston Bugle and send to:

The Editor, Bildeston Bugle, 14 Squirrells Mill Rd, Bildeston IP7 7DY

Receipts cannot be issued without your full postal address.

If we do not receive payment by the 17th of the month
your advertisement may NOT be included

The Bildeston Bugle Management Team is:

Alan Jacobs (Editor) - 14 Squirrells Mill Road, Bildeston IP7 7DY 01449 741645

Nan Dales (Treasurer) 142 High Street, Bildeston IP7 7EF 01449 741047

Tricia Baldwin (Advertising Revenue)

Angie Biddulph (Bugle Team Liaison)

Vic Ling (Assistant Editor)

Alison Sims (Marketing)

ED'S COMMENT

So now we know. Know what? Well, actually quite a little list of things.

- The Royal baby has arrived and it's a girl, Princess Charlotte, Elizabeth, Diana;
- The outcome of the Bildeston Neighbourhood questionnaire. No real surprises there, though the summary might have been less confusing if the statistics had been ordered differently. The first three percentages of the Key Findings appear inconsistent, but reflect the nature of the questions asked. Overall it was much the same message as last time, even down to the issues of litter, dog mess and speed control through the village;
- No surprises on Bildeston Parish Council either with the remaining councillors being re-elected unopposed and spaces filled by co-opting. The main message being either everyone is happy with the Parish Councillors we have, or no-one else is prepared to do the role. It is a pity for local democracy on both sides, for those putting themselves up as well as the voters. Having no need to campaign diminishes the process of communicating principles and policy and, just as important, accountability to those principles. But we cannot complain if nobody else is prepared to do the job and can only be immensely grateful to those who are;
- The proposed housing estate on the countryside beyond Rotheram Road has been refused by Babergh's Planning Committee. The reason is the developers failed to establish a local need. Double edged concern here. First guidance for developers in refining their proposal and second, defining 'local need' because all new homes are soon occupied. However, surely a precedent for future development, unless planning laws are changed again as a result of...
- the General Election. What a surprise! Except for the 11,334,920 people who voted for the new Government! A Conservative government and Conservative Babergh Council. We embark on a wave of hope and optimism that they keep promises made, especially the great development debate!

With that in mind, Henry Morphew's 1991 piece on page 16 is interesting. It shows Bildeston's population has grown by just 24% over 130 years from 782 to 1054, 0.2% rise a year. Property development over the 130 years is also interesting. The number of houses up from 190 to 470, but over a period of 130 years.

This has been a major issue in the recent campaign to manage Bildeston's growth; that growth has always happened, but has to be based on need and has to be managed so that the size of the increase is successfully integrated within the infrastructure and boundary of the village. If a single development were to be allowed to increase the size of the village by the same number that it took over 130 years to achieve, arguably that would be nonsense and run counter to all sensible planning. As if to confirm the point the 1911 Census shows the population of Bildeston at 790, just 8 more in ten years! This is further evidence for both sides of the argument about village growth. All communities grow with the accompanying increase in housing stock.

The challenge remains to establish a policy and plan to manage that growth sensibly, allowing for development of the infrastructure first, to cope with and support growth, and allow incoming families to be welcomed and assimilated into the existing community. The last thing we want is strain on limited resources supporting our village life and strain between villagers who already live here and those moving in to any new homes.

Lindsey Painting & Decorating Services

Professional & reliable interior and exterior home decor. Paint, Wallpaper Coving etc. Plus other allied services, Woodwork, tiling, laminate flooring. Curtain hanging, tracks/pelmets fitted.

Terry Peters

Home 01449 741483

Mob 07809 571790

Email tac59@talktalk.net

Friendly Experienced
Teacher offers
Individual

MATHS Tuition

Speciality
Confidence Building

KS1 – KS3

Call Colin Plummer on
01449 736918
for details and availability
or email:
colinp52@btinternet.com

Angel Delights

**Outside Caterer &
Specialised Confectioner**

Weddings – Christenings – Funerals
Birthday Parties - Barbecues - Dinner Parties

Tradional tea room now open
at 85 high Street Hadleigh

CAKES FOR ALL OCCASIONS

Contact Helen
01473 828191
info@angel-delights.com
www.angel-delights.com

BILDESTON PRIMARY SCHOOL

Bildeston Primary School

Our trip to Thorpe Woodlands Adventure Centre!



All the children in Year 3 and 4 thoroughly enjoyed this trip. They were on the go from the moment they woke up to the moment they went to bed. Everyone excelled themselves and experienced an extensive range of outdoor activities. Throughout the trip they were truly a credit to the school.

A super time was had by all!

Netball Tournament

On Wednesday 22 April, Years 5 and 6 played in a Netball Tournament against the schools in the Hadleigh Pyramid. Several schools took part with fair play and sportsmanship being the theme running through the tournament. We were so proud of our team as they came third overall.

Crucial Crew

Our Year 6 visit to "Crucial Crew" was held on Tuesday 21 April 2015. This event is run by the local Rotary Club with volunteer helpers. The children experienced a number of simulations to learn how best to deal with emergencies such as a house fire or giving first aid. The simulations were set up by the emergency services and the children have always found the course very interesting, practical and helpful.

Suffolk Farm Fair

On Thursday 23 April, children from Years 3, 4 and 5 went to the School Farm Fair at the Suffolk Showground in Ipswich. The day allowed the children to experience many different aspects of farming, food production and the countryside with demonstrations and interactive 'hands on' exhibits. It also enabled pupils to understand the relationship between the crops grown in the fields to the end products found in the shops. Our coach was partially funded by Suffolk Agricultural Association and we would like to thank them for helping us.

Handball Tournament

We were invited to send selected pupils to Inspire Suffolk to compete in a Year 4 Handball event held on Tuesday 28 April 2015. Lots of schools took part and with some very stiff competition and a new competition for us to enter and with some pupils debuting in their first competition we were positioned seventh! Well done to them all and of course for our parents who helped with the transport!!



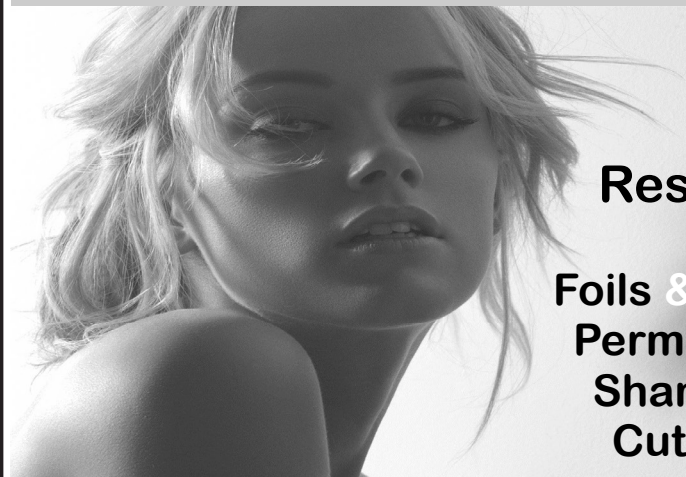
Whilst the older children had important work to do this week, the EYFS children took the opportunity to make good use of our outdoor classroom and enjoy the sun (and the rain!). We did a variety of forest schooling activities including; bug hunting, making shelters, dream catcher crafts and we even had our snack under one of the shelters we had built. We learnt to use lots of skills during this time and had lots of fun!

"Learning and Growing Together"
Newberry Road, Bildeston, Ipswich, Suffolk, IP7 7EU
Telephone: 01449 740269
Website: www.bildeston.suffolk.sch.uk



Studio 66

Ladies and Gents Hairdressers



Restyling

**Foils & Highlights
Perms & Colours
Shampoo & Sets
Cut & Blow Drys**

**Friendly Service from our Professional Team
Tue & Wed Senior Citizens**

*****special rates *****

Opening Times Tues - Friday 9 - 5 pm Sat - 8 - 1pm



Tel 01449 740644

52A High St Bideston IP7 7EA

Bildeston Sportsfield Pavilion



Come and celebrate the magic of
mid-summer at Bildeston Sportsfield



Tickets £10 Adult £5 Children u12 (all proceeds towards Bildeston Sportsfield)
Tickets include buffet and camping for one night only
For tickets please contact the secretary on 01449 741563
or e-mail secretary@sportsfield.bildeston.org

Karen Finch RHAD FSHAA



Hearing Problems?

Take that first step towards better hearing & book a hearing test with **Suffolk's** number one private provider for hearing care!

- Hearing assessments
- Latest digital hearing aids
- Outstanding aftercare
- Earwax removal ■ Noise protection

Your local centres:

HADLEIGH

Hadleigh Health Centre, Market Place

NEEDHAM MARKET

The Country Practice, Barking Road

**Home visits
are also
available**

Book your hearing test today!



01473 230330

■ Award Winning ■ Family Run ■ Private ■ Independent

COUNTRYSIDE OBSERVER



Abandoned and disused railways are often wonderful places to walk and discover remnants of Britain's past, as well as a wealth of flora and fauna. While the trains may have long disappeared from these old cuttings and embankments, the land has been reclaimed by nature, providing the perfect habitat for wild flowers, butterflies and birds. Our nearest one is at Hadleigh and offers a good walk south heading towards the A12. Another former line worth trying is the one that served Lavenham. Old rail lines have one significant advantage over

other country walks in that they are flat and in the summer months often provide a good canopy of shade above with large trees to each side. Talking of walking, I hope that our readers will have grabbed a chance to take a walk in our local Blue Bell Woods. I did and as ever it was truly magical walking through sunlit glades, listening to the sounds of bird song and the humming of the bees, to me the blue bells herald the start of summer proper.

The Greenfinch is a lovely bird often to be seen in our gardens and surrounding countryside. Sadly numbers have been in decline due to trichomonosis. Trichomonosis is the name given to a disease caused by a parasite. It has been recorded in a number of garden bird species and is widely acknowledged to be the factor in the rapid decline of the British Greenfinch population that was first noted in late summer 2006. One way to assist the birds is to make sure that all garden bird feeders are kept as clean as possible. Greenfinches are reported most frequently, but other finches and house sparrows are also susceptible to trichomonosis. This is a disease found only in birds - it does not pose a threat to the health of humans, cats or dogs. The trichomonad parasite lives in the upper digestive tract of the bird, and its actions progressively block the bird's throat, making it unable to swallow food. The bird dies from starvation. Birds with the disease show signs of general illness, for example lethargy and fluffed-up plumage, but affected birds may also drool saliva, regurgitate food, have difficulty in swallowing or show laboured breathing. The trichomonad parasite cannot survive for long periods outside the host. Transmission of infection between birds happens when they feed one another with regurgitated food during the breeding season, and through food or drinking water contaminated with recently regurgitated saliva.

What can we do to help? If trichomonosis is suspected, it is recommended to temporarily stop putting out food, and leave bird baths dry until sick or dead birds are no longer found in the garden. The wonderful weather has truly got the gardens going with beautiful displays of spring flowers everywhere to be seen. At Redhill aerodrome recently for the aircrafts 50 hour check, I walked around the airfield perimeter in the sunshine taking in all the wonderful hedgerow sites. A pond included a number of fine looking fat and prosperous frogs, eyes peeking out from the water watching me and wondering what this interloper was doing close to their watery world. Flying back to Suffolk the ground was a patchwork of yellow with the oil seed rape fields coming into full flower with the river estuaries off to starboard glinting and shimmering in the heat. Suffolk is truly as beautiful from the air as on the ground. Mike Biddulph

COUSINS & SON BILDESTON LTD

available to carry out all your building requirements
from
Renovations / Alterations / Extensions
to
General Repairs

Please contact Paul for a free estimate
01449 744360 or 07876 244461
or email paul.cousins268@btinternet.com

Tired of Housework?

COUNTRY MAIDS

A highly experienced home cleaning service

Established over 24 years, COUNTRY MAIDS
provides a service for all home cleaning from
brass, ovens, windows, kitchens and polishing.

All materials and equipment provided.

No contracts.

For a free quote telephone:

(01449) 741108

HATTERS CHIMNEY SWEEPS UK

WWW.CHIMNEY-SWEEP.ORG.UK

CHIMNEY & FLUE SWEEPING

FROM £45 INTRODUCE

A FRIEND AND EARN A

£10 DISCOUNT STOVE

MAINTENANCE

CHIMNEY REPAIRS

CCTV FLUE INSPECTION

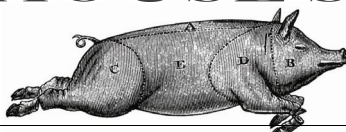
01787 281979



FAMILY GROCER PROVISIONS OFF LICENCE

BANK HOUSE STORES

Richard & Joan
O'Sullivan



telephone
01449 740403

Shop locally - and help keep Bildeston beautiful!

Here's some good news that will save you money without the need to travel. The prices of Kingsmill Sliced Bread - including 50/50 and Wholemeal - are now reduced to just £1.20. We also stock the new "SmartBuy" economy range of products from Londis at discount beating prices. Here are a few examples:

2kg Bag Potatoes	£1.49	Spaghetti Pasta	69p
Carrots	500g Bag 75p	Onions	3 - Pack 99p
Bag of 7 Apples	£1.25	Energy Drink	39p
Chopped Tomatoes	40p	Baked Beans	39p

Hart's Eggs are still only £1 for 6 (£1.30 Free Range)

Save even more money with our special offers, available from 25th May up to 13th of June:

Andrex Toilet Rolls	4-Pack	Only £1.75
Heinz Spaghetti	4 - Pack	Only £2
Pepsi/R Whites	2 litre bottles	Only £1
Pringles	Half price	Only £1.35
Ristorante Frozen Pizzas		Only £2
Gold Blend	100g	Only £2.65
Stella Artois	10 Can Pack	Only £10
Isla Negra	Chilean Wines	Only £4.99
Famous Grouse/Smirnoff/Morgan's Spiced		Only £13.50

.....plus many, many more.

We are open from 7am to 7pm (6.30 for the Post Office - 6 o'clock on Wednesdays) Monday to Saturday and 8.00 to 12.00 every Sunday and Bank Holidays.

Shop Locally - You need a jolly good reason not to!



COMMUNITY FIRST RESPONDERS

PUBLIC ACCESS DEFIBRILLATOR

The residents of Bildeston have access to a new piece of equipment that can improve the prospect of recovery for patients who suffer a cardiac arrest. The PUBLIC ACCESS DEFIBRILLATOR, which is situated on the gable end wall of the Bildeston Health Centre, along side the car-park footpath, was funded and supplied by East of England Ambulance Service NHS Trust (EEAST) as part of their AED1000 Project. The heated, external cabinet that contains the defibrillator was funded and supplied by The Friends of Bildeston Surgery (FOBS); the installation and electrical works were funded by the Partners of Bildeston Surgery. The project was initiated and coordinated by the local Community First Responder team. (CFR) based at Wattisham Village. In the coming weeks, the CFR team will be holding a series of Basic Life Support (BLS) classes at venues in and around Bildeston. The purpose of BLS classes is to pass on the knowledge, skills and confidence, to perform Cardio Pulmonary Resuscitation (CPR).

In the mean time, if you encounter an individual who is unconscious and not breathing. DIAL 999 or get another person to do it for you. The ambulance control staff will ask a series of questions to work out what assistance you need. From this point on, help is on its way to you. Once the ambulance control have established that you require the Public Access Defibrillator, they will tell you where it is and they will give you the code needed to open the cabinet door. Once you have the Defibrillator at the patient's side, un-zip the protective cover and press the GREEN button. Listen to the voice prompts and follow the instructions.

If you would like any additional information or details of BLS classes being held in your area, please contact CFR Coordinator Keith Marshall on 01449 740793 or email: wdresponder@aol.com

**Bildeston Sportsfield Management Committee cordially
invite you to Wine and Nibbles at their AGM
at
Bildeston Sportsfield Pavilion
on
Wednesday 10th June 7.30pm**

If you can spare a little time one evening per month and would like to get involved we would love to have some new members on board.
We need help organising a few events each year and welcome fresh ideas for events at the sportsfield.

BASE GARAGE LTD

MONDAY – FRIDAY 7.30 – 6.00

SATURDAY 8.00 – 12.00

- TYRES
- EXHAUSTS
- PUNCTURES
- BATTERIES
- WHEELBALANCING
- AIR CONDITIONING
- LATEST DIAGNOSTIC EQUIPMENT
- WELDING TO MOT STANDARD
- SERVICING & ALL REPAIRS TO ALL MAKES OF CARS
& LIGHT VANS FLEET DRIVERS WELCOME
- MOT CLASS 4, 5 & 7
- COURTESY CAR AVAILABLE
- COLLECTION & DELIVERY SERVICE 5 MILES RADIUS
OF GREAT BRICETT
- WINTER CHECKS
- HOLIDAY CHECKS

£10 OFF!

***YOUR MOT WITH THIS
ADVERT***

LOWER FARM ROAD, GT BRICETT, IPSWICH IP7 7DR

01473 658987 / 01473 657704



KINGS HEAD & Brewery

Nigel, Susie, Ryan and Freya look forward to welcoming you to the Bildeston Kings Head.

www.bildestonkingshead.co.uk

- Here's our **free live music** for **June**: every **Wednesday** is **Open Mic Night** from **8:30pm**; from **9pm on Saturday 27th** **Hipidi** will be entertaining us with an eclectic mix of their own songs and cover tunes; and from **1pm on Sunday 28th** **Kevin Nightingale** will accompany your roast lunch on contemporary classical acoustic guitar.
- Our monthly **charity quiz night** is on **Thursday 25th June** at 8:30pm, please arrive by 8pm. To book a table telephone Sue or Nigel on 01449 741 434. Thanks to April's teams who raised **£81** for the Joseph Orchard Fund.
- Our good value homemade food uses quality ingredients that are locally sourced where possible. We are well known for tasty beer-battered fish & chips, delicious boozy beef pie (Suffolk Red Poll beef) and our freshly prepared traditional Sunday roasts. Meals are cooked to order and available to eat-in or take-away. To reserve a table please phone **Sue or Nigel on 01449 741434**.
- We brew our own real ales on-site (tours by arrangement) with at least one other from a local independent brewer.
- Our opening times are as follows:

Wednesday	Open 6pm-12am (open mic/buskin night)
Thursday	Open 6pm-11pm (bar games night)
Friday	Open 4pm-12am (full menu 6-9pm, T/Away 5pm)
Saturday	Open 12pm-12am (full menu 12-2pm & 6-9pm)
Sunday	Open 12pm-10:30pm (roast/Sunday menu 12-3pm)
Monday/Tuesday	Closed

**COURTS OPEN
ALL YEAR**

**TURN UP
AND PLAY**

**NO COURT FEES
OR BOOKING**



**SOCIAL SUNDAY
TENNIS**

**SOCIAL CLUB
NIGHTS**

Anyone for Tennis? Join now for 2015 Bildeston Tennis Club

Childrens Fun Open Day Sunday 14th
June 1pm. For all newcomers and members, an after-
noon of fun, tennis, games and coaching with refresh-
ments (and teas and coffees for parents.)

For membership/coaching enquiries see bildestontennis.webs.com or
phone Victoria on 01449 741572 or Martin on 01449 743120

We are small and really friendly club and welcome new players of any age and standard

Annual membership fees are only £35/Family £15/Adult £5/Child (under 18)

Social tennis/club nights are every Wednesday at six, come along and play

Sunday social tennis events held throughout the year

BUGLE'S 25TH ANNIVERSARY YEAR

June marks the halfway point in our anniversary year and, continuing our 'rummage into the archives', for this month we go to June 1991 and a piece provided by Henry Morphew who had been looking at the statistics for the village from the 1881 Census.

H E N R Y M O R P H E W W R I T E S . . .

We have just filled in our Census Forms for 1991 and these will now be sealed up and not available for 100 years. I have been looking at the Census of 1881, which is the latest to be made public. The statistics for Bildeston are as follows, but please bear in mind that some of the houses which were then Bildeston are now part of Nedging Tye. Also the Red Lion Inn is not included as then it was included in the parish of Wattisham.

Bildeston 1881

Total number of houses	194 (18 unoccupied)
Total number of males	246
Total number of females	260
Total number of children	276 (under 13 yrs)
Total population	782

BILDESTON COMMUNITY CYCLING

TUESDAY EVENING RIDES

Start at 6.45pm from the Market Square, and last about an hour. There are two groups of riders.

A SLOW RIDE, starting at 6 to 8 miles, specifically for new and returning riders, at a speed to suit the riders. Walking on hills is allowed, and no Lycra is necessary!

WHY NOT COME ALONG WITH A FEW FRIENDS? YOU MUST HAVE A BIKE IN THE SHED, OR ONE YOU CAN BORROW.

A REGULAR RIDE of 15 -20 miles for more confident riders.

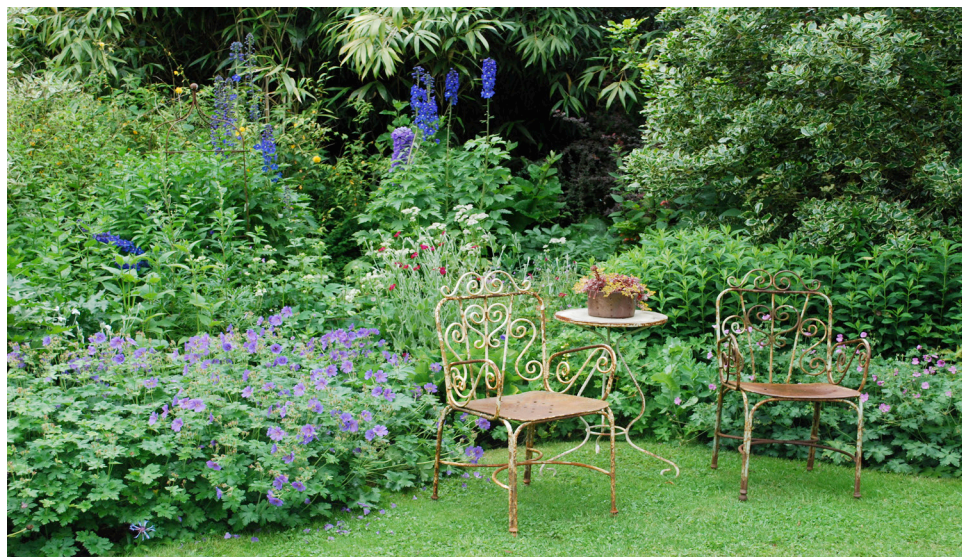
If you used to cycle, or want to start, why not join us this year? Just turn up at the Market Square. If you have any queries, please contact Robin Weaver on 01449 741048.

We regret no children under 12, no unaccompanied children under 16.

CHELSWORTH OPEN GARDENS

Sunday 28th June 2015 11.00 - 5.00

- ◆ 20+ gardens open
- ◆ specialist nurseries, plant and produce stalls
- ◆ refreshments in the gardens
- ◆ arts & crafts indoor stands
- ◆ Marjan Wouda sculptures in two gardens
- ◆ £6 per adult; children and parking free



All proceeds to All Saints Church

Sponsors: Peacock Inn (Chelsworth), Red Rose (Lindsey), The Bildeston Crown

THE OLDEST & FINEST OPEN GARDENS EVENT IN THE COUNTRY

www.chelsworth.co.uk

Pilates Classes Now Held at Kersey Mill

If you want to exercise both your body and mind as well as improving your sense of well being, strength, flexibility and mobility then I truly believe pilates is for you!

I am passionate about bringing the benefits of pilates to everyone and as a fully qualified teacher certified by Europe's largest professional pilates organisation I can help you improve muscle tone and core stability, building strength from the inside out, re-balancing the body and bringing it into correct alignment.

Please contact me if you wish to join a small matwork class and allow me and the Body Control Pilates method help you achieve your goals. Pilates can benefit anyone of any age and any level of fitness. I look forward to hearing from you.

Call 07855 394 703 for more info.

www.pilatesworks4u.com

*Jenny
x*



Little Krafts www.littlecrafts.co.uk

20 Bury Street, Stowmarket, IP14 1HH
(Situated at the rear of Harts Homebrew & Crafts)

- Gibsons Games & Puzzles • Melissa & Doug
- NEW House of Puzzles Range
- Classic Wooden Toys • Latest 2014 Puzzles
- Perfect Party Presents from £3.99
- Fun, Education Toys

The ONLY Puzzle Shop in Stowmarket



Tel: 01449 674888 / 07919 508715

Email: littlecrafts@yahoo.co.uk



Melissa & Doug

Gibsons



• Ringshall Table Tennis Club at Ringshall Village Hall. •

• Every Sunday 7.30p.m. until 9.30p.m. •

• Two tables in use, adults £2-50 under18 £1 •

• Tea, coffee, refreshments incl. •

• All standards of play Welcome •

• Contact Maureen Wills 01473 658936 •

• Jill Smith 01473 658463 •

• Bill Dewick 01473 658009 •



**THERE WILL BE AN
OPEN GARDEN WITH CREAM TEAS ON
SATURDAY 20TH JUNE FROM 3.00 UNTIL 5.30PM
AT
36 HIGH STREET, BILDESTON
HOSTED BY ANGELA & MARTIN RODGERS**

**ALL PROCEEDS FROM THE SALE OF TEAS AND PLANTS WILL FUND
THE START UP COSTS FOR PLANNING OF THE
VILLAGE PRODUCE SHOW
TO BE HELD ON MONDAY 31ST AUGUST**

Dentist

Paul Rolfe BDS

**Veneers & Crowns in a
single visit**

Dental Implants

Family Dentistry

**Lavenham &
Long Melford**

01787 882722

www.paulrolfedental.co.uk

STOWMARKET CHORALE SUMMER CONCERT

Tickets are now on sale for Stowmarket Chorale's summer concert.

The programme is John Rutter's lovely Requiem and his less-known arrangement of folk-songs entitled The Spring of Thyme. Soprano Angela Hicks is the soloist, William Baldry accompanies on the piano, and Leslie Olive conducts.

The concert takes place on

Saturday 18th July in the United Reformed Church, Stowmarket at 7.30pm.

Tickets costing £14 , £7 for under 18s, are available from Stowmarket Tourist Information, chorale members, or online at www.stowmarketchorale.org.uk.

CPH GARDEN SERVICES

*All Jobs Considered, Large & Small
Sheds & Summer Houses
Garage/Office Space Projects
High Quality Wood Construction
Grounds Maintenance*

Please contact me to discuss your needs
and obtain a no obligation quotation.

Telephone: Paul 01449 740020

Telephone: Chris 01787 210536

Email: chris.harman1990@gmail.com

P.D. ROSE.

Plumbing / Heating & General Building

- Plumbing & Heating Repairs
- Complete Bathrooms & Tiling
- Int. & Ext, Decorating
- Building Maintenance

Tel. 01787 211042

Mob. 07974 290697

3. Fen Street, Boxford, CO10 5HL



Done & Dusted Cleaning Service



*We are a professional, reliable, recommended
family run business offering*

- Domestic Cleaning – regular cleaning or one off spring cleans.
- Small office cleaning
- Ironing service – Collected and delivered back to your door
- Oven Cleaning
- We can take you to the shops or collect your prescription etc. to make your life easier.

Please Call Us On:

Office 01449 258574/Mobile 07775 029579

THE BUGLE INTERVIEW

The Bugle recently heard about the fantastic success Aaron Harvey had when he went to the United States to represent Britain in a World Championship competition. We took the opportunity to interview him by way of celebrating his success and making sure Bildeston keeps up with the progress of our very own international champion!

Tell us what happened in Florida, USA, recently in your competition there?

I was competing with the best in the world in the World English Sporting Clays Championship at South Florida gun club in the United States.

As a result of that competition where does that leave you in the rankings and the British team?

In the rankings I am now the highest leading English junior in the country. In the competition itself out in Florida, America we got silver. Even better was the fact that I was the highest placed British competitor out there in the juniors section. Leading up to Florida I won gold at the British Open Compak in juniors, and I also won the Essex Masters Junior Championship 2015.

What does the future now hold? What is the next major competition?

Well the future, hopefully, is bright in my shooting career. I have just gained a new sponsor which is Landmark Scaffolding, and I am very proud to represent them and very grateful for their support.

My next major competition abroad will be in October, again overseas, in South Africa where I am representing England again. Then in February 2016 I am going to the World Sporting Clays Championship in Dubai.

How long do you spend practicing and what coaching do you receive?

Practicing wise, leading up to any major competition and event, I shoot about 250-500 shots each day for about 1 and a half weeks, but on an ordinary working week I shoot about 500 across the whole week. In terms of Coaching I receive that from Philip Thorrold, but he has taught me to become a much more independent shooter and to coach myself as much as possible, so I am doing a bit of coaching aswell.

How do you manage the expense of being involved in the sport and travelling the world?

My family are a massive support helping with the expenses. My normal day to day job pays as well but as you all know everything adds up from fuel, my gun care, clothing, etc but my sponsors do help out a massive amount with my cartridges paid for, so I am able to train to my best ability to enable me to progress, do my absolute best and win these competitions. I also get my coaching sponsored as well so I am very thankful to everyone for their support.

What advice would you give to someone starting out in the sport?

My personal advice when it comes to shooting is firstly, everyone thinks "guns" are bad and dangerous... Like every thing in life if you are careful, safe and not stupid with them you manage the danger. If I was to offer advice I would say get a cheap gun, go to a local club or charity shoots, find out information on a coach local to you and start from there. That is how I started, by going to local shoots like Badwell Ash gun club, Wattisham Clay Target Club, and all the charity shoots local to me. Then when I started noticing myself progressing and people told me I could go far, I then got in with Phillip and his son Ben and they started coaching me, and here we are now, I am shooting and representing my country and travelling the world doing what I love! But the sport is expensive, I will say that at my level now.

What do your family feel about your success?

My family is so proud of me and could not be happier with my success and I couldn't be more proud of what I have achieved myself in something others would only dream of and in such a short amount of time. I am just 'gob-smacked' at how it has happened so soon and it all just seems so unrealistic but so true at the same time!

What are your main ambitions for the future?

My main ambitions are to?

1. Win a world championship junior gold
2. Win an English championship junior gold
3. Win a British championship junior gold
4. Win a European championship junior gold.

Then progress on to winning all of these events overall!!

DISCOVER KETTLEBASTON TREASURE HUNT AND BARBECUE

Saturday 20th June 2015 3.00pm

Meet at Kettlebaston Village hall to collect clues
(Footpath walking, so not suitable for buggies!)

Followed by Barbecue @ £10 per person or £30 for
groups of 4 Wine, Beer and soft drinks Bar

Please contact Mandy to reserve places and inform us if you are
vegetarian mandy761@btinternet.com or 01449 740346

PRIZES AND FUN FOR ALL THE FAMILY

ALL PROCEEDS TO ST. MARY'S CHURCH, KETTLEBASTON

BARGEWELL SKIP HIRE

2 - 8 yard skips

1 ton waste bags

We also collect any full waste bags

Long or short term hire

Delivery 7 days a week

Fast & friendly service

Stowmarket 01449 615056

Mobile: 07770 452378

High Rd, Gt Finborough, Stowmarket, Suffolk

www.bargewellskiphire.com

Credit cards accepted

Stuart Walker

Decorating, Painting & Refurbishments



A locally based company offering an honest and reliable service

Painting - Decorating - Refurbishments - Repairs

All work considered indoors & out! Fully Insured & free quotations provided

Please contact Stuart on Tel: 07711 606464 or 01449 740387

Email: stuma1@hotmail.co.uk



Venture into Summer for Bildeston Ladies Club!

Following a very lively AGM, which was well attended (including four new ladies wishing to join our ranks), we now embark on our first ever summer meetings!

On June 4th we will meet at 7:30p.m. on the patio at Chamberlin Hall for a Bowls taster evening. Why not come along and have a go? Friends and family are welcome and who knows we could find a Bowls champion of the future!! Members £2, guests £3.

Please wear flat shoes. We will be serving drinks and nibbles and look forward to a fun event. (If wet we will play a game of Bingo – much less knee bending skill required!)



On July 2nd we will be visiting Hollow Trees farm shop for a behind the scenes tour – put the date in your diary and look out for details in the July issue of the Bugle or give me a call to reserve a place - £5 each (to include refreshments) and again guests are welcome.



Jo Silburn 740504 (Bookings Secretary)

CHIMNEY SWEEP

ECO SWEEP CHIMNEY SERVICES

NEW POWER SWEEPING METHOD USED

FOR A MORE THOROUGH CHIMNEY CLEAN
THAN BRUSHES.

INDUSTRIAL HEPA FILTERED VACUUM.

FULLY INSURED.

INSURANCE RECOGNIZED CERTIFICATES ISSUED.

SPOTLESS, RELIABLE AND FRIENDLY SERVICE.

ALL CHIMNEYS, WOOD BURNERS, AGA, BOILER

FLUES SWEEPED.

GUILD OF MASTER SWEEPS CERTIFICATED MEMBER.



TEL. 01359 232335

Workshops in June

Brook Farm Studio



Website: www.brookfarmstudio.co.uk
email: brookfarmstudio@gmail.com

Sat 6th June Painting for All

Painting for all ages and all abilities
10.00 to 12.30 £8

Creative Embroidery - Sat 6th

1.30 - 5pm £22.50

Figurative Drawing- Sat 20th

10.00am- 12.30pm £8

Pottery - Sat 27th 2pm-4.30pm £20

Regular weekly classes in June:

Friday - Painting 10 - 12.30pm £8

Wednesday - Get Crafty £6

Thursday - Textiles £8

Booking essential call Hazel on 07432 138966 or 01473 823819

Canine Wellbeing At The Pheantry

Wattisham, Suffolk IP7 7LA

Dog and Puppy Day Creche

We provide a very special service of looking after your dog or puppy. In the comfort of our own home, whilst you are at work, or whilst your dog is recovering from veterinary treatment. Why not allow your puppy to socialise with other canine friends. Daily collection and delivery is available.

Dogs on Holiday

Whilst you are on holiday, why not let your canine friend have one too. She/he can come and stay in the comfort of our own home, where she/he will be treated as one of the family.

Also available

Canine Hydrotherapy

For more details phone:

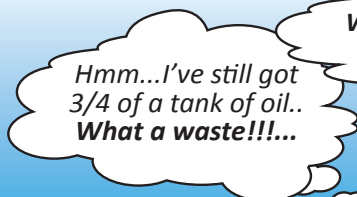
01449 740659 mobile 07956286056

or visit our website: www.caninewellbeing.co.uk

Heating Oil



...Wish I could just
get 200 litres



Hmm...I've still got
3/4 of a tank of oil..
What a waste!!!...

What can I do??..
Ahh an uplift!!..



Brrrrrrrr!!
NO HEATING OIL
the boiler won't start!!

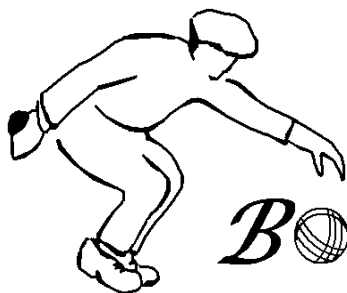


01473 558854



www.badgerfuels.com





The Boule-in

STYLISH FRENCH COLLECTABLES

EXHIBITIONS 2015

Sat 21st until Sun 29th March

Sat 20th until Sun 28th June

Sat 19th until Sun 27th September

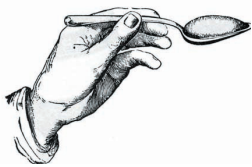
Thur 26th until Sat 28th November

Open daily 10am - 5pm

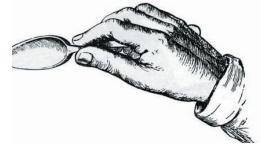
77 High Street,

Bildeston *www.boule-in.co.uk Tel*

01449 740359



Recipe of the Month



Sugar free Spiced Carrot Cake with Orange Cream Cheese Frosting

Ingredients

- 150g Self Raising Flour
- 100g Ground Almonds
- 50g Raisins
- 50g Walnut halves roughly broken
- 4 tsp Ground Mixed Spice
- 1 tsp Bicarbonate of Soda
- 3 large eggs
- 100ml Sunflower oil - plus extra for dressing
- 3 tbsp Semi-skimmed milk
- 300g Carrots coarsly grated
- For the Frosting:-
- 150g Full fat soft cheese
- 1 medium orange finely grated zest

Method

1. Preheat the oven to 180C/160CFan/ Gas4. Grease and line the base of a 20cm/8in spring form cake tin with parchment.
2. Put the flour, almonds, raisins, walnuts, mixed spice and bicarbonate of soda in a large bowl and mix thoroughly. make a well in the centre.
3. In a separate bowl, whisk the eggs, oil and milk together and stir in the grated carrot. Add the egg mixture to the dry ingredients, stirring to form a thick batter.
4. Pour into the prepared tin and spread to the sides. Bake in the centre of the oven for 1 hour, or until the cake is well risen and a skewer inserted into the centre comes out clean. Leave to cool in the tin.
5. Take the cake out of the tin and peel off the lining paper. Put the cake on a board or plate.
6. To make the frosting, stir the cheese and orange zest together. Spread evenly over the cake.
7. Cut into small wedges to serve.



WALL TO WALL BUILDERS

Experienced, Professional & Reliable

- Extensions

- New Builds

- Listed Buildings

- Loft Conversions

- Kitchens & Bathrooms

- All Renovation Work
& Repairs

Richard Bateson

M: 07799 114814

T: 01449 741510

richardbwtw@gmail.com

www.walltowallbuilders.co.uk

HONEY BEE'S NURSERY

Hitcham Village Hall, Hitcham, IP7 7NE

FOR CHILDREN AGED 2 – 5 YEARS

Open Mon, Wed, Fri 9.15a.m. – 12.15p.m. or 3.15p.m.

Tues, Thurs 9.15a.m. – 12.15p.m.

Early Drop Off – 8.30a.m. Lunch Club Daily until 1.15p.m.

Fee's @ 2.50 per hour (3 hour session = £7.50)

2 Indoor Rooms and Outdoor Areas

Ofsted Registered

Early Years Funding accepted for all 3 & 4 year olds

2 year old funding may also be available

Free Taster Session Available

Contact: Sharon Scarfe 01449 740764 (hall) 01449 740581 (home)



Back by popular
demand and
raising funds for
B NATURAL
music festival

MUSICAL GARAGE SALE!

Bildeston

Saturday 11th July
9am-12.30pm

£5

**TO GET YOUR GARAGE ON THE MAP
OR FOR A TABLE IN THE SQUARE**

SIGN UP IN THE KING'S HEAD, THE BANK HOUSE
STORES OR CONTACT nicolafenzl@mac.com

Donations of books or just about anything sell-able for the **B NATURAL**
table very gratefully received: **please contact Nicola on 741908**

SUMMER FÊTE

SATURDAY 27TH JUNE

1 2PM TIL 3PM

- ♦ INFLATABLE EXTRAVANZA ♦
- ♦ BBQ ♦ REFRESHMENTS ♦
- ♦ STALLS ♦ GAMES ♦ RAFFLE ♦
- ♦ TOMBOLA ♦

We welcome any community groups or local people who would like a stall at the fête. Stalls cost £10. Please contact Jacqueline on 07971 404804 by 13th June.



Fête will take place in the school playing field
All proceeds will go to funding ipads for KS1 and KS2

If you have any donations for stalls (wine, cakes, chocolates, toys, school uniform, raffle prizes etc), please deliver to the school office. Thank you



Andrew Bingham

INDEPENDENT FUNERAL SERVICE

Local Caring Independent Funeral Service

24 Hour Personal Service * Private Chapel * FREE Parking

www.andrewbingham.co.uk

01449 771666

The Nutshell, Milton Road South, Stowmarket, IP14 1EZ



Golden Charter
Funeral Plans



BILDESTON ELECTRICAL

Rewires, Extensions, Board Changes or New Installations

Any Alterations to Existing Installations

(lights, sockets, etc.)

Contact Ian

01449 743664 or 07754 723685

- ❖ Home Maintenance
- ❖ Carpentry
- ❖ General Building Work
- ❖ Brickwork & Blockwork
- ❖ Stonework
- ❖ Hand Built Sheds
- ❖ Floor & Wall Tiling
- ❖ Paving & Patios
- ❖ Kitchens & Wardrobes
- ❖ Pergolas
- ❖ Carpentry
- ❖ Bespoke Fencing
- ❖ Property Maintenance
- ❖ Repairs
- ❖ Advice & Planning
- ❖ Shop & Office Fitting
- ❖ Renovation Work



Bob Buckle
Carpentry & Building Services

Bildeston - Suffolk.

For a prompt & reliable service.



01449 740275 or 07580 753020
Email: bobbuckle10@gmail.com

BILDESTON PARISH COUNCIL

DRAFT Minutes of the meeting of Bildeston Parish Council

held on 11th, May, 2015 in Chamberlin Hall at 7.30 pm

In attendance:

Councillors: A Guttridge (Chairman) P Bullen, D Dempsey, D Drury,
R Lester, R Taylor

Also Present: D Blackburn (Clerk) District Councillor M Creffield



Councillor A Guttridge, the Chair of the Parish Council, opened the meeting and welcomed everyone present.

Parish Councilors completed the requisite declarations of acceptance of office and registrations of interests.

C01/15/16 ELECTION OF CHAIRMAN 2015/16

It was AGREED: That Councillor Guttridge be elected as Chairman of the Parish Council for the ensuing year.

Councillor Guttridge signed a declaration of acceptance of office as Chairman

C02/15/16 ELECTION OF VICE-CHAIRMAN 2015/16

It was AGREED: That Councillor Taylor be elected as Vice-Chairman of the Parish Council for the ensuing year.

Councillor Taylor signed a declaration of acceptance of office as Vice-Chairman

C03/15/16 APOLOGIES FOR ABSENCE

An apology for absence was received from County Councillor Mrs J Antill.

C04/15/16 DECLARATIONS OF PECUNIARY AND NON-PECUNIARY INTERESTS

Councillors Lester and Taylor declared a non-pecuniary interest by reason of being members of the Kings Pightle Management Committee and Sportsfield Management Committee. Councillor Drury declared a non-pecuniary interest by reason of being a member of the Sportsfield Management Committee. Councillor Guttridge declared a non-pecuniary interest by reason of being a member of Chamberlin Hall Management Committee and an employee of Suffolk County Council.

C05/15/16 DISPENSATIONS IN RESPECT OF PECUNIARY INTERESTS

There were none.

C06/15/16 MINUTES OF PREVIOUS MEETING

It was AGREED: That the minutes of the meetings held on 13th April, 2015 be signed by the Chairman as a correct record.

C07/15/16 CALENDAR OF MEETINGS

It was AGREED: That the annual programme of meetings for 2015/16 be approved and adopted.

C08/15/16 COOPTION TO CASUAL VACANCY

It was confirmed that the three casual vacancies that existed following the recent elections had been advertised in 'The Bugle'. One expression of interest had been received.

It was AGREED: That Mr Peter Bullen be coopted to the Parish Council

C09/15/16 PARISH COUNCIL APPOINTMENTS 2015/16

It was AGREED: That the following appointments be made for the ensuing year:

Area of Responsibility	Role	Councillor
Burials & Cemetery	Portfolio	A Hubbard
Footpaths	Portfolio	D Dempsey
Roads and Traffic	Portfolio	P Bullen
Street Lights	Portfolio	R Taylor
Wattisham Airfield Liaison	Portfolio	P Bullen
Chamberlin Hall Mgt Committee & Playground	Representative	A Guttridge
Kings Pightle Mgt Committee	Representative	R Taylor
Sportsfield Mgt Committee	Representative	D Drury
Parochial Church Council	Contact	R Lester
TON Class Liaison Officer	Contact	Clerk

C10/15/16 POLICE REPORT

There had been one incident reported during the period 1st April to 30th April 2015, regarding which, no publicity had been requested.

C11/15/16 COUNTY COUNCILLOR'S REPORT

There was no report on this occasion

C12/15/16 DISTRICT COUNCILLOR'S REPORT

Councillor Michael Creffield attended his first meeting of the Parish Council following his election as District Councillor for the Brett Vale Ward, replacing Desmond Keane who had not stood for re-election.

Councillor Taylor requested that Councillor Creffield continue the arrangement adopted with the previous District Councillor, in calling in to the Planning Committee, any planning application where an objection had been made by the Parish Council to the Planning Authority. Cllr Creffield undertook to attend meetings of the Parish Council so that he would understand fully any objections made by the Parish Council to planning applications.

C13/15/16 VILLAGE AMENITIES

Tickets were on sale for the Summer Solstice event at the Sportsfield. The District Council was preparing a Sport Pitch strategy to help justify developer contributions to sports facilities in the Babergh and Mid-Suffolk districts. Some repairs had been undertaken at the Coronation playground although all works had not yet been completed.

Inspection arrangements for the play areas were discussed and the requirement to maintain clear paper records of weekly inspections was identified. This would safeguard the Parish Council's position and ensure the safety of those who used the equipment responsibly. Mrs Jessica Holloway had notified the Parish Council that because of personal commitments, she would be unable to continue inspections and community volunteers had not come forward to assist in the future. The bins on the Coronation playground were sometimes overflowing with rubbish as the bin bags were not being removed for collection by the District Council's refuse collection service.

It was AGREED:

- a. That the Clerk and Councillor Drury would liaise with the consultants appointed by Babergh District Council to prepare the playing pitch strategy to clarify the extent of the review and arrange a site inspection of sporting amenities in the village;
- b. That the Grounds Maintenance Coordinator be requested to undertake weekly inspections of the Coronation and Chamberlin Hall playgrounds and put the bin bags out for collection at the roadside; and
- c. That Mrs Jessica Holloway be thanked for her efforts in conducting inspections of the play equipment and skate park and helping to maintain the tidiness of the Coronation playground.

C14/15/15 RISK MANAGEMENT ARRANGEMENTS

The training and adoption of safe operating procedures of the Grounds Maintenance Coordinator in using mowing equipment, particularly on uneven open spaces was considered by the Parish Council.

It was AGREED: That the Grounds Maintenance Coordinator be required to undertake relevant training on the use of mowing equipment with such training to be provided by an approved trainer at Tomlinson Groundcare.

C15/15/16 “WHAT’S ON VILLAGE NOTICEBOARD”

Further to Minute no. 239/14/15, the Parish Council considered a suggestion to purchase and erect a new noticeboard that could be used by village organisations to promote forthcoming activities and events in the village.

It was AGREED: That Councillor Lester investigate the matter further and submit a proposal to a future meeting.

C16/15/16 CLERK’S REPORT

The Clerk reported on enquiries received from the public regarding the Grove Cemetery, its condition and the reservation of burial plots.

It was AGREED: That the Clerk and Councillor Hubbard liaise over these matters and Councillor Hubbard would seek to obtain the parish records for the cemetery.

C17/15/16 ANNUAL GRANTS ROUND

Members of the Parish Council considered the grant applications that had been received from various bodies and also the records presented by the Clerk of those bodies that had received grants from the Parish Council in each of the previous five years.

It was AGREED:

- a. That grants of £100 be awarded to the Wattisham & District First Responders, Friends of Bildeston Surgery and the Royal British Legion Poppy Appeal respectively (with the latter to be donated in addition to the purchase of a poppy wreath later in the year); plus sponsorship of the 25th anniversary edition of The Bugle at £15; and
- b. That the funds be drawn down from the Grants Fund with the fund to be replenished through the 2016/17 budget round.

C18/15/16 ANNUAL ACCOUNTS AND ANNUAL GOVERNANCE STATEMENT 2014/15

Members of the Parish Council considered the Annual Return incorporating details of the Parish Council’s accounts and annual governance statement. The Internal Auditor’s report was also presented the only substantive recommendation being to register with the Information Commissioner’s Office with regard to data protection.

It was AGREED:

- a. That the following be approved by the Parish Council:
 - i. The Internal Auditor’s report on the 2014/15 Accounts and Systems of Internal Control and

the recommendation in respect of registration with the Information Commissioner's Office be implemented;

ii. The copy of section 1 of the annual return relating to the accounts; and

iii. The copy of section 2 of the annual return relating to the annual governance statement.

b. That the Clerk advertises the notice of elector's rights to inspect the accounts and submits to the external auditor the Annual Return, details of significant variances for 2014/15 and bank reconciliation for year ended 31st march 2015.

C19/15/16 AUTHORISATION OF PAYMENTS

Payee	Description	Budget Category	Amount
David Blackburn	Clerk's Pay	Salaries & Expenses	£173.09
Suffolk Assoc. of Local Councils	Internal Audit	Audit	£222.00
Adrian Chinery	Grounds Maintenance Pay	Salaries & Expenses	£97.77
Adrian Chinery	Grounds Maintenance (Fuel)	Playgrounds & Open Spaces	£31.50
Command Pest Control	Grounds Maintenance (Pest Control)	Playgrounds & Open Spaces	£230.40
Babergh District Council	Brown Bin Emptying Annual Charge 2014/15	Playgrounds & Open Spaces	£135.00

(Note: All items of expenditure to be met from the General Fund).

b. That the Clerk be authorised to renew the insurance policy with AON, noting that the ride-on mower has been renewed through Came & Co with Equity Red Star.

C20/15/16 PLANNING APPLICATIONS

Planning Appendix A: Planning Applications Consultation

Reference	B/15/00479
Address	21 High Street, Bildeston, IPSWICH, IP7 7EX
Proposal	Erection of single storey porch & erection of single storey rear extension
Decision	No objection

Reference	B/14/00467
Address	13 Manor Road, Bildeston, IPSWICH, IP7 7BG
Proposal	Erection of single storey front extension
Decision of Parish Council	Notes the potential for overlooking with regard to the adjoining neighbour's property to the north and that the planning consent, if granted, should be conditional upon mitigation measures to maintain the privacy of that property.

Reference	B/15/00382
Address	Taylor Made Joinery Interiors Ltd. Manor Wood, Ipswich Road, Bildeston, IPSWICH, IP7 7BH

Proposal	Erection of new warehouse, single storey extension to existing warehouse and car parking
Decision of Parish Council	<p>Supports the extension to the car park subject to appropriate screen planting and the implementation of appropriate measures (applied by condition) to prevent an increase in light pollution to neighbouring properties.</p> <p>Whilst the Parish Council supports, in principle, further development on the site to create additional capacity for the business and opportunities for increased employment in the village, it objects to the size of the proposed extension in view of its detrimental effect upon the residential amenity of those living in nearby properties. In particular, the Parish Council considers:</p> <ul style="list-style-type: none"> a. That the proposed development encroaches upon land previously identified for planting to screen the site from neighbouring properties (it appears to the Parish Council that such planting has not been provided fully in accordance with previous planning consent(s); b. That the proposed site, which is on sloping ground, increases the overall height of the proposed development (because of its profile) and its impact upon neighbouring properties on Manor Road in terms of visibility, and likelihood of lighting pollution; and c. That the applicant has not submitted any clear proposals to alleviate the problems outlined above.
Reference	B/14/01271
Address	Redwick House, High Street, Bildeston, IPSWICH, IP7 7EX
Proposal	Erection of 1 no. two-storey dwelling, raise height of existing boundary wall to 3 metres and insertion of 1 no. window, and demolition of existing buildings and structures.
Decision of Parish Council	<p>Objection on following grounds:</p> <ul style="list-style-type: none"> a. That the proposal which seeks to utilise the garden boundary wall, constitutes unsympathetic and inappropriate development within the context of a conservation area and extends too close to the highway; b. That the proposal is detrimental to the street scene; and c. That the roof terrace creates a problem in terms of overlooking and compromises the privacy of nearby properties. <p>Furthermore, the Parish Council is disappointed with the overall quality and clarity of drawings that have been submitted in support of the planning application.</p>

Planning Appendix B: Determined by Babergh District Council

Reference	B/14/01435
Address	Land East of Artiss Close and Rotheram Road, Bildeston, IPSWICH
Proposal	Outline - Erection of 49 residential dwellings with details of access, as amended by details received 23rd January 2015, 24th & 25th February 2015.
Decision	Rejected

Reference	B/15/00215
Address	79 High Street, Bildeston, IPSWICH, IP7 7ER
Proposal	Listed building consent for repairs to chimney stack (removal and reinstatement)
Decision	Granted

The Planning Authority has acknowledged the Parish Council's representations in respect of the new Joint Local Plan for Babergh and Mid-Suffolk.

(Councillor Taylor declared a non-pecuniary interest in respect of planning application B/15/00450 presenting his observations for not taking part in the debate on this application).

C21/15/16 MATTERS TO BE BROUGHT TO THE ATTENTION OF THE COUNCIL

Councillor Dempsey referred to works on laying of land drains which had made footpath no. 3 unpassable. The matter would be raised with the County Council's Rights of Way Officer.

Councillor Dempsey raised the problem of fouling on footpaths particularly along High Street and Church Lane. Members of the Parish Council supported the provision of a bin bag dispenser in the vicinity of 'The Crown' for a trial period.

Councillor Hubbard raised problems with parking on Brookfield which was identified as being a Police issue if it persisted.

Councillor Hubbard clarified that the cause of the noxious odours occurring on the edge of Smock Meadow was a broken pipe between two collection tanks.

Councillor Hubbard raised the problem of overgrowth on Hadleigh Road which would be referred to Suffolk County Council.

Councillor Drury undertook to make an informal request to seek the pruning of a lilac tree overhanging Smock Meadow and Brook Meadow.

Councillor Taylor submitted details of the estimated costs of replacing two street lights on Brookfield with a private cable supply from a feeder pillar. A possible cheaper alternative was suggested by Councillor Taylor than that prepared by the County Council involving a UK Power Networks supply direct to each column. The Parish Council supported the proposal and it was delegated to the Clerk in consultation with Councillor Taylor to establish the lower cost option and place an order for the works up to an approximate cost of £3984.

C22/15/16 PUBLIC SESSION

There were no issues raised

C23/15/16 CONFIDENTIAL BUSINESS

Following the exclusion of the public in accordance with the Public Bodies (Admissions to Meetings) Act 1960, Councillor Dempsey provided an update on Henry Morphew's estate and the creation of a charitable body to administer the funds released from the estate.

The meeting closed at 10.02pm

Zor Boutique at Kersey Mill



**Stunning
jewellery,
scarves, bags,
purses, clothing
& shoes. All at
affordable prices.**

Call: 07969525859
Webb: www.zoronline.com
Email: zoronline.sales@gmail.com
Kersey Mill, Stone street IP7 6DP

THE FLOWER SHOP AT KERSEY MILL

Local and Nationwide deliveries available

☎ 01473 805156

At The Flower Shop our team create all aspects of Floristry from bouquets, arrangements, baskets, wedding and sympathy flowers.

Our florists create beautiful arrangements just for you. We use fresh seasonal flowers, purchased daily in all bouquets, baskets and arrangements.

Visit The Flower Shop today, order online, call and collect or arrange a delivery.

 www.theflowershopkm.com

 sales@theflowershopkm.com

The Flower Shop at Kersey Mill, Ipswich Suffolk IP7 6DP

D'ENZA



HAIR & BEAUTY SALON

AT

"KERSEY MILL"

"June Offers"

1: Father's Day 21st June Special Offer ~ Buy a Hot Stone Back, Neck & Shoulder Massage on a gift voucher ~ valid for 6 months.

(This price is only through this month unless brought as a gift voucher.)

Special Price of only £20

2: Beauty ~ Book a OPI Luxury Manicure & Pedicure

Special Price of only £35

As the hair offers have been very popular we are extending these through June.

3: Hair~ Wash, Cut & Style **40%** only in June

Special Price of only £15.90

4: Men's Hair cuts only in June

Special Price of only £8

The above offers can not be used with another offer.

Please find us on facebook: denza.hairbeauty@facebook.com

Please telephone for more information or make a booking on: **01473 829069**

Email: info@denzahairandbeauty.com or visit us on Facebook or Twitter for our special offers.

For opening times & brochure please look at our website: www.denzahairandbeauty.com



Kersey Mill, Kersey, Ipswich, Suffolk. IP7 6DP.

A Letter from Bildeston Rectory..... I was talking to someone recently who said they are really good at practising avoidance tactics - it sounds OK when it's got a name - quite acceptable even, but actually it just means doing anything but what you really ought to be doing. And I realise as I washed the kitchen floor and emptied the recycle bin and then thought about walking down to the shop for some bits and pieces that it was exactly what I had been doing this afternoon. I tell myself I will be able to concentrate better on that awkward or difficult thing I must do if I clear my mind of all the other clutter - so I did the odd jobs, re-filled the stapler, made a cup of coffee and answered a few e-mails - but really and truly I was avoiding writing to you because I just didn't know what to write this month!

I'm not alone I know in avoiding things - we all do it often. But most of all we do it around difficult or demanding tasks. It's not that I find talking to you difficult, don't get me wrong! I love a good chat - I often think how blessed I am to be in a job where having a good natter with others is really work. But today my mind is full of clutter - a really hard visit with an elderly, bereaved lady this morning, a diary so full there are no spaces to unwind or take stock this week and next, and the weeds are growing in the garden.

And then there is the concern we have at church about churchwardens now that Ros has given up. Oh and then there was the Rogation Walk - the sun shone, the lunch was great but I really should have checked the walk beforehand - I am too old to be climbing stiles and I was not alone! How awkward that was.

Most people I talk with practise avoidance tactics about God too - well with only a one hour time slot on a Sunday morning to be in touch with God, who can blame them! There is always dinner to cook, car to wash, shopping to do, kitchen floor to wash...except that God isn't difficult or demanding, and you can manage a conversation with him anytime - even while you're washing the car. I am sure he would love to hear from you on any day of the week, not just at 11 on a Sunday morning. Tell him what's on your mind at the moment, and what you are avoiding. And then see if you get a reply. I really hope you do. **Yours, Rev Liz**

Wanted: a Verger to help at weddings and funerals at St Mary Magdalene Church.

This is an occasional job and we never know when there might be a funeral until the week before, although we do know when the weddings will be. We offer £30 per session, rising to £45 in 2016 for a trustworthy person, for about 2 -3 hours work each occasion. In an average year we may have about 8 funerals and 3 weddings.

What will you do? Ensure the church is clean and tidy before the wedding or funeral and that everything is ready for the service. The carpet might need a quick vacuum and the porch sweeping. You would be at the church for 45 minutes before the service and a similar time afterwards as needed.

For people not used to church, a Verger can be a reassuring presence and they will do all they can to make people feel welcome as they arrive. They can also assist if there are guests who require special needs, such as wheelchair access, a glass of water or children's toys. Occasionally for a big gathering, extra seating might need setting out and putting away afterwards.

Please ring or e-mail if you are interested. I will be glad to hear from you.
Rev Liz 01449 or rev.liz@btinternet.com

WHATFIELD w SEMER, NEDGING and NAUGHTON

Rector: Revd Liz Law

7 Chamberlin Close, Bildeston, Ipswich, IP7 7EZ
tel: 01449 740085 email rev.liz@btinternet.com

CHURCH SERVICES JUNE 2015

7th June Trinity 1	11am	Benefice Communion Service	Nedging
14th June Trinity 2	11am	Morning Prayer	Bildeston
21st June Trinity 3	11am	Holy Communion	Bildeston
28th June Trinity 4	11am	Family Service + Baptism	Bildeston
5th July Trinity 5	11am	Benefice Communion Service	Whatfield

Weekly Prayer

Wednesday 9.30am – Whatfield Church

Baptist Church, Duke Street, Bildeston

Jim Haley tel: 01449 740716 email: bildestonbc@gmail.com

Service every Sunday morning at 10:45

Lunch Club: at 12:30 on the first Wednesday of each month –

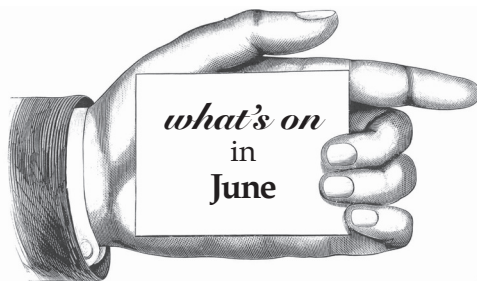
All are most welcome

Community Coffee Centre: Every Friday from 09:15 to 11:30

Enjoy meeting old and new friends at these events!

‘Craft it Together’ - Every Monday at 7pm.

Bring along your craft activities and join us for an informal, relaxed evening -
share ideas, gain new skills or just enjoy doing your own thing.



Bildeston Community Coffee Centre

Baptist Church 9:15-11:30 **Every Friday**

Lunch club 12.30pm.....**1st Wednesday each month**

Craft it Together

01449 740716 for details.....**Every Monday**

Strollers & Striders

Baptist Church Car Park 10:00 **Every Monday**

Baby & Toddler Group

Baptist Church 9:15-11:30 **Every Tuesday**

Tuesday Evening Bike Rides

6.45pm Market Square.....**Tuesday 2nd**

Ladies Club

Bowls Taster Evening.....**Thurs 4th**

Bildeston Sportsfield Management Committee AGM

Sportsfield Pavilion 7.30pm.....**Wed 10th**

Bildeston Tennis Club Children's Open Fun Day

Tennis Club 1.00pm.....**Sun 14th**

Open Garden and Cream Tea for Village Produce Show

36, High Street 3.00 to 5.30pm.....**Sat 20th**

Sportsfield Summer Solstice Party

Sportsfield and pavilion 7.30pm.....**Sat 20th**

Bildeston School Summer Fete

School field 12 to 3.00pm.....**Sat 27th**

Men's Breakfast

Baptist Church 8:00am **Last Saturday of the Month**

More details on events inside.

Please tell us about your events in July

email: editor@bildestonbugle.co.uk



When you're finished with this Bugle please pass it on or recycle it.