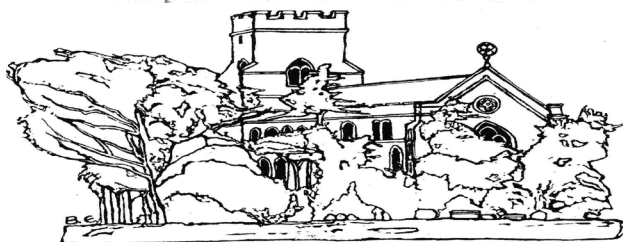


**This issue kindly  
sponsored by -**

**Eileen Burman  
and  
family**



Saint Mary's Church, Bildeston, Suffolk.

**The village magazine produced for the people of Bildeston**



## BILDESTON BUGLE ADVERTISING AND FREE CONTRIBUTION INFORMATION

Our aim is to provide every resident in Bildeston with a magazine which provides information of local interest FREE OF CHARGE. To that end we are required to be efficient in the space we use to print free notices. We endeavour to include interesting items, announcements for events open to the general public for free and items of a charitable nature free of charge. Ongoing free announcements need to be reduced to minimum size or make a contribution towards printing costs. Please check with us before submitting your advert and ALWAYS provide us with all of your contact details in order for us to send a receipt.

email: [editor@bildestonbugle.co.uk](mailto:editor@bildestonbugle.co.uk)

*Sponsor a 'Bugle' – £15 per issue*

includes a brief message of your choice on the cover of the magazine

### *Advertising Rates*

	1 issue	6 issues (15% disc)	12 issues (30% disc)	
1/4 page	£3.00	£15.00	£26.00	65mm W x 92mm H
1/2 page	£6.00	£30.00	£50.00	134mm W x 92mm H
Full page	£12.00	£60.00	£100.00	134mm W x 190mm H

#### THE SMALL PRINT

All adverts, payments and items are required by the 17<sup>th</sup> of the month for inclusion in the following month's issue. The earlier free contributions are received the greater the chance of inclusion. Please make cheques payable to Bildeston Bugle and send to:

The Editor, Bildeston Bugle, 14 Squirrells Mill Rd, Bildeston IP7 7DY

Receipts cannot be issued without your full postal address.

If we do not receive payment by the 17<sup>th</sup> of the month  
your advertisement may NOT be included

### **The Bildeston Bugle Editorial Team is:**

Alan Jacobs (Editor) - 14 Squirrells Mill Road IP7 7DY

Tricia Baldwin

Angie Biddulph

Nan Dales

Vic Ling

Alison Sims

# ED'S COMMENT

Have you ever thought how there is something peculiarly British, even English, about the month of April?

Right from the start with the 1st of April we have April Fools Day, which is celebrated, if that's the right word, almost uniquely in Britain with a long tradition of the media trying to trick the public. But the 'Britishness' of April seems to go much further.

Take, for example, the 21st of April which is the real birthday of Queen Elizabeth. Real, because, of course she enjoys an official one later in June.

Then there is the 23rd April, the day of England's Patron Saint, St. George, though it is no longer celebrated as it once was. St George's Day used to be a national holiday in England. It is now marked with parades and other activities. Flags with the image of St George's cross are flown on some buildings and a few people wear a red rose on their lapel. Church services on the Sunday closest to April 23 often include the hymn 'Jerusalem', written by the poet William Blake. The words describe a supposed visit to Glastonbury, England, by Jesus Christ during his youth.

Arguably our greatest dramatist, William Shakespeare, was born and died on the 23rd April. Not only accredited as the greatest dramatist ever he was responsible for developing the English language. In all his works he used around 17,700 words of which he invented over 1700 of our common words by changing nouns into verbs, changing verbs into adjectives, connecting words never before used together, adding prefixes and suffixes, and devising words wholly original. Some of the most common words in current usage were invented by him, words like; advertising, birthplace, blanket, champion, eyeball, gossip, luggage and loads more. Amazing! Oh yes, that was one of his! Another iconic emblem of ours is the Union Jack. On the 12th April 1606 James 1st introduced the Union Flag, combining the elements of England, Scotland and Wales. The historian, Richard Starkey, says the origin of it being called the Union Jack comes from the fact that the Latin name for James is Jacobus, shortened to Jack. The worry about what might happen to it if Scotland left the Union is over, for now.

Who remembers that on the 1st April 1973 VAT was introduced? So who says the Government doesn't have a sense of humour?

One of the most significant scientific breakthroughs of all time took place on 25th April 1953 when the American biologist James Watson and the English scientist Francis Crick discovered the structure, the twisted ladder of the double helix, of DNA, the genetic code for all life. We are 12 years on from the completion of the Human Genome Project led by Watson, which has had the most profound impact on biological science since Charles Darwin shook the world with his theory of evolution. Only last month England was the first country to allow work on fertilizing human eggs from 3 sets of parents to remove certain inherited diseases as a result of these discoveries.

Charles Darwin would be impressed, and maybe a little concerned, at how far we have come from his theories of natural selection to humans having the ability to manipulate selection. Which leads to another link with April. Charles Darwin died on 19th April 1882 and was buried in Westminster Abbey on 26th April.

# GARDEN GUBBINS

Enjoying the recent days of sunny weather, I was preparing to be in a positive frame of mind, and write about the Spring flowers appearing, when my eye caught a newspaper column, and the mood switched. Let me share this with you! ' British gardeners face an invasion of slugs and snails this year' a new report warns. Experts predict that this year will be the worst on record for the garden pests due to the relatively mild winter. Dr Ian Bedford, the head of Entomology at the John Innes Institute, estimates that each cubic metre of garden in Britain could currently contain up to 200 slugs, each of which produce up to 200 more. They survive the winter as eggs, and without a cold snap, the numbers will escalate this year. There is now the invading voracious Spanish slug which reproduces at twice the rate of its British counterpart and can grow up to 6 inches long. Dr Bedford said that gardeners should encourage natural predators such as birds and hedgehogs to keep the infestation down. I shall be trying a new 'recipe' which I was told about, to spray on and round the stems of plants which are know to invite slugs and snails. Boil up a pint of water with several cloves of garlic. Cool, dilute and spray. It could be worth a try.

**Friendly Experienced  
Teacher offers  
Individual  
MATHS Tuition  
Speciality  
Confidence Building  
KS1 – KS3**

**Call Colin Plummer on  
01449 736918  
for details and availability  
or email:  
colinp52@btinternet.com**

## CAN ANYONE HELP?

Is there anyone who might be able to help Loretta attend a mass? If so, do please contact her.

*Dear Sir,*

*Could you perhaps help me. I would very much like to go to mass - either on a Saturday evening in Sudbury or on a Sunday morning in Hadleigh. On a Saturday I can get to Sudbury, but there is no public transport back at 18:00. With thanks.*

*Loretta Pienaar Groenewald  
4A Hill House Flats IP7 7ET  
Tel. 01449 740150*



# BILDESTON PRIMARY SCHOOL

## World Book Day



World Book Day was on Thursday 5 March. **All of the children dressed up on this day and the theme was "Stripes"**. The children wore stripy tops, hats, scarves and trousers and got into the spirit of the day – even the teachers managed to look rather funny!! Each class looked at different genres for example KS1 looked at the book "Lost and Found" by Oliver Jeffers. KS2 looked at "Where's Wally?" continuing the stripy theme.

## Red Nose Day

Red Nose Day was on the same day as our Mother's Day Lunch. We ran a competition to design a mask on the theme of "Make your face funny for money". The children then paraded their masks in the playground before sitting down to a fish 'n' chip lunch with their mums for Mother's Day. Of course during all this they even raised some money for Red Nose Day.

## Quick Sticks Festival

The ever popular Quick Sticks hockey festival was held on Tuesday 3 March 2015 at St Joseph's College and we were able to enter a team consisting of eight players from Bildeston. The children came up against some stiff competition but thoroughly enjoyed being involved in a tournament that brought schools together not just from the Hadleigh pyramid but beyond. They were supported by some very enthusiastic mums!

## Quiz Club Challenge

Through a selection process we were able to send along four children (one each from year 3, 4, 5 and 6) to represent our school at the area heat of the **National Key Stage 2 General Knowledge Quiz Championship 2014-15**. The quiz took place on Wednesday 4 March at The Oaks CP School, Ipswich. Our head teacher went along with the children to support them along with children from our collaborated school, Whatfield Primary.



## Snape Festival of Music



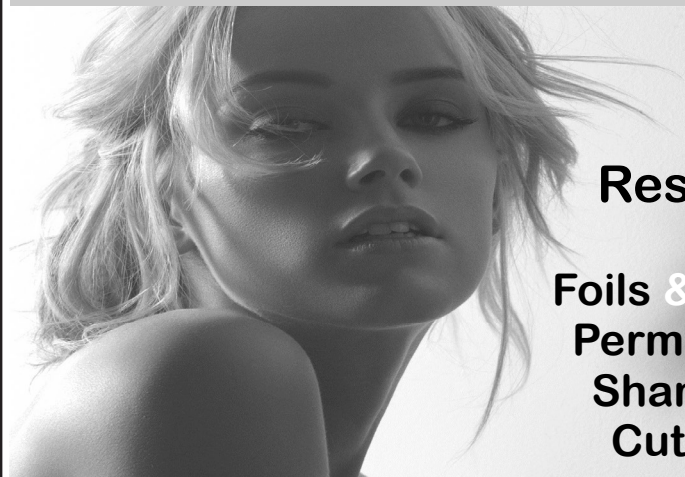
Just to top our month off, our music co-ordinator worked tirelessly to ensure that 29 of our children were well rehearsed to be a part of The Snape Festival of Music singing, playing percussion instruments and recorders. The children, along with lots of mums helping were transported by bus to Snape and enjoyed a fabulous day of workshops and fun culminating in them singing on stage in front of parents and other school children taking part. They were amazing and a credit to us!

*"Learning and Growing Together"*  
Newberry Road, Bildeston, Ipswich, Suffolk, IP7 7EU  
Telephone: 01449 740269  
Website: [www.bildeston.suffolk.sch.uk](http://www.bildeston.suffolk.sch.uk)



# *Studio 66*

*Ladies and Gents Hairdressers*



**Restyling**

**Foils & Highlights  
Perms & Colours  
Shampoo & Sets  
Cut & Blow Drys**

**Friendly Service from our Professional Team  
Tue & Wed Senior Citizens**

**\*\*\*special rates \*\*\***

**Opening Times Tues - Friday 9 - 5 pm Sat - 8 - 1pm**



**Tel 01449 740644**

**52A High St Bildeston IP7 7EA**

# Lindsey Painting & Decorating Services

Professional & reliable interior and exterior home decor. Paint, Wallpaper Coving etc. Plus other allied services, Woodwork, tiling, laminate flooring. Curtain hanging, tracks/pellets fitted.

Terry Peters

Home 01449 741483

Mob 07809 571790

Email tac59@talktalk.net

## P.D. ROSE.

Plumbing / Heating & General Building

- Plumbing & Heating Repairs
- Complete Bathrooms & Tiling
- Int. & Ext, Decorating
- Building Maintenance

Tel. 01787 211042  
Mob. 07974 290697

3. Fen Street, Boxford, CO10 5HL

*Tired of Housework?*

## COUNTRY MAIDS

*A highly experienced home cleaning service*

Established over 24 years, COUNTRY MAIDS provides a service for all home cleaning from brass, ovens, windows, kitchens and polishing.

All materials and equipment provided.

No contracts.

For a free quote telephone:

(01449) 741108

Karen Finch RHAD FSHAA



# Hearing Problems?

Take that first step towards better hearing & book a hearing test with **Suffolk's** number one private provider for hearing care!

- Hearing assessments
- Latest digital hearing aids
- Outstanding aftercare
- Earwax removal ■ Noise protection

Your local centres:

## HADLEIGH

Hadleigh Health Centre, Market Place

## NEEDHAM MARKET

The Country Practice, Barking Road

**Home visits  
are also  
available**

**Book your hearing test today!**



**01473 230330**

■ Award Winning ■ Family Run ■ Private ■ Independent

# COUNTRYSIDE OBSERVER



It's with great sadness I confirm Smudge, our dear Springer Spaniel's passing. He suffered a further relapse on the 11th of Feb. We sat with him stroking his head unable to move. He made a final effort to move closer to Angie then was gone, a month short of his thirteenth birthday. Dog owners amongst us will know the heartache losing a much loved pet brings. The vet said how lucky we were to have him die at home, instead of having to make that final dreaded journey to be put to sleep. I had mentioned hedge laying previously. In more northern

areas where climate and habitat are less favourable and natural stone readily available, the art of dry stone walling is common place. I had experience re-building a fallen wall from a livestock pen on the Island of North Uist in the outer Hebrides back in 1975. A team of us rebuilt a 15 ft long x 4 ft high section. It was hard work lifting stones and positioning. The following day the pen was filled with sheep for the first time in decades.

A dry stone wall is actually two separate but interlocking walls, tied at regular intervals by longer through or tie stones, and a middle filled with a mass of smaller rocks and pebbles. You begin building at the end, known as the quoin or cheek end. This is perhaps the hardest bit as it has to be perfectly solid, square and upright, "everything tied in together". The base stones, big and heavy, are laid in a shallow trench, and then the wall is built up layer by layer (course by course, a waller would say), each new stone bridging the joint between the two beneath it, like a brick wall. Most are pinned from behind with a smaller stone, so they sit solidly. And in a well built wall, each stone will slope slightly downwards from the centre, to let the rainwater out. The tie stones go in every metre or so. Then large, flat stones are laid on top, and stand upright cope (or coping, cap or capping) stones along it. Bigger, heavier ones at regular intervals, with smaller, lighter ones wedged in between. Finally, pebbles are hammered down between the cap stones, setting everything solidly in place.

The waller's only tool is a sharp-edged hammer, used to dress stone when necessary. Wallers like to cut stones to shape as little as possible; in some parts of the country, the stone is too hard to dress anyway and must be used as it is.

Britain boasts a staggering 125,000 miles of dry stone walls. A few are ancient, dating back to 3,500 BC. Most are field walls and went up in the early to mid-1800s, in the wake of the enclosure acts. For a century they were well maintained, but these days farming lacks the resources. Neglected for long, soil gets in and seedlings follow. Vegetation is the ruin of a drystone wall. Walling is hard work. A good craftsman can do maybe three metres in a day, which entails lifting about three tonnes of stone (six if he's rebuilding). The reward lies in making something natural, sound and beautiful that, looked after, will stand for centuries.

The evenings are stretching out, new growth is visible everywhere. Primroses, violets and aconites are showing. I came across a solitary pink campion flower well ahead of its time, usually seen mid April onwards. Thoughts are turning towards the garden at home, the new growing season on the allotment and all it entails. **Mike**



## Skate Park Help

Hopefully this Bugle issue comes with more Spring-like weather, and the Skate Park will be coming into its own again. Even in February half term it was well used.

Thank you to all of you who are helping to keep the park looking good by putting your rubbish in the bin or taking it home.

Unfortunately I haven't had any parents or grandparents come forward to offer regular help with emptying the litter bins so far. It really is just a case of putting stray bits of litter in the bins, emptying and re lining them, and leaving the bags by the entrance. I could really do with some help so the weekly job comes around less often and I'd very much appreciate any offers. Please email me if you can help: [jmh.stables cott age@btinternet.com](mailto:jmh.stables cott age@btinternet.com)

**Thank you. Jessica**

## Bildeston Sportsfield Pavilion



### looking for a venue?

Function room and sportsfield for parties, events, rehearsals, meetings, clubs and much more.

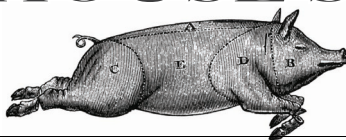
For more information and competitive rates please ring 01449 741563  
or e-mail [secretary@sportsfield.bildeston.org](mailto:secretary@sportsfield.bildeston.org)



FAMILY GROCER PROVISIONS OFF LICENCE

# BANK HOUSE STORES

Richard & Joan  
O'Sullivan



telephone  
01449 740403

**Shop locally - and help keep Bildeston beautiful!**

**WE ARE OPEN ON EASTER SUNDAY AS NORMAL  
UNLIKE ALL THE BIG SUPERMARKETS WHO ARE CLOSED**

Here's some good news that will save you money without the need to travel. The prices of Kingsmill White Sliced Bread - including 50/50 - are now reduced to just £1.20. We also stock the new "SmartBuy" economy range of products from Londis at discount beating prices. Here are a few examples:

2kg Bag Potatoes	£1.49	Spaghetti Pasta	69p
Carrots 500g Bag	75p	Onions 3 - Pack	99p
Bag of 7 Apples	£1.25	Energy Drink	39p
Chopped Tomatoes	40p	Baked Beans	39p

Hart's Eggs are still only £1 for 6 (£1.30 Free Range)

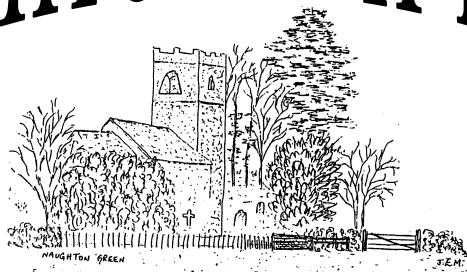
Save even more money with our special offers, available up to 11<sup>th</sup> April:

Whole Fresh Chicken	Only £4
Heinz Baked Beans 4 - Pack	Only £2
Goodfellas Frozen Pizzas	Only £2
Flora/Flora Light 500g	Only £1.50
Kellogg's Cornflakes/Frosties	Only £1.75
Stella Artois 8-Pack	Only £8
Casillero del Diablo Chilean Wines	Only £5
Hardy's VR Australian Wines	Only £5

.....plus many, many more.

**We are open from 7am to 7pm (6.30 for the Post Office - 6 o'clock on Wednesdays) Monday to Saturday and 8.00 to 12.00 every Sunday and Bank Holidays.**

# NAUGHTON MAY FAYRE



**BANK HOLIDAY MONDAY**  
**4<sup>th</sup> MAY 2015 12.30-3.30pm**  
**NEDGING WITH NAUGHTON VILLAGE HALL**

---

## **IPSWICH YOUTH STEEL BAND**

---

- |                             |                          |
|-----------------------------|--------------------------|
| ✿ Showman's Engine          | ✿ Barbecue               |
| ✿ Tombola                   | ✿ Spinning Demonstration |
| ✿ Cake Stall & Refreshments | ✿ Bouncy Castle          |
| ✿ Plant Stall               | ✿ Children's Corner      |
| ✿ Fairground Organ          | ✿ White Elephant         |
| ✿ Vintage Engines           | ✿ Face Painting          |
| ✿ Classic Bikes and Cars    | ✿ Grand Draw and Raffle  |
| ✿ Coconut Shy               | ✿ & Much More!           |
- 

**A GREAT AFTERNOON OUT FOR ALL THE FAMILY!**  
**SO PLEASE COME ALONG AND JOIN IN THE FUN!**

---

**ALL PROCEEDS GO TO ST. MARYS CHURCH, NAUGHTON**

# BASE GARAGE LTD

**MONDAY – FRIDAY 7.30 – 6.00**

**SATURDAY 8.00 – 12.00**

- TYRES
- EXHAUSTS
- PUNCTURES
- BATTERIES
- WHEELBALANCING
- AIR CONDITIONING
- LATEST DIAGNOSTIC EQUIPMENT
- WELDING TO MOT STANDARD
- SERVICING & ALL REPAIRS TO ALL MAKES OF CARS  
& LIGHT VANS FLEET DRIVERS WELCOME
- MOT CLASS 4, 5 & 7
- COURTESY CAR AVAILABLE
- COLLECTION & DELIVERY SERVICE 5 MILES RADIUS  
OF GREAT BRICETT
- WINTER CHECKS
- HOLIDAY CHECKS

***£10 OFF!***

***YOUR MOT WITH THIS  
ADVERT***

**LOWER FARM ROAD, GT BRICETT, IPSWICH IP7 7DR**

**01473 658987 / 01473 657704**



# KINGS HEAD & Brewery

Nigel, Susie, Ryan and Freya look forward to welcoming you to the Bildeston Kings Head.

[www.bildestonkingshead.co.uk](http://www.bildestonkingshead.co.uk)

- Here's our **free live music** for **April**: every **Wednesday** is **Open Mic Night** from **8:30pm**; from **9pm on Saturday 25<sup>th</sup>** the excellent singer/songwriter **Greg McDonald** will be entertaining us with an interesting mix of tunes; and from **1pm on Sunday 26<sup>th</sup>** **Kevin Nightingale** will accompany your roast lunch on contemporary classical acoustic guitar.
- Our monthly **charity quiz night** is on **Thursday 30<sup>th</sup> April** at 8:30pm, please arrive by 8pm. To book a table telephone Sue or Nigel on 01449 741 434. Thanks to February's teams who raised **£96** for St Elizabeth Hospice.
- Our good value homemade food uses quality ingredients that are locally sourced where possible. We are well known for tasty beer-battered fish & chips, delicious boozy beef pie (Suffolk red poll beef) and our freshly prepared traditional Sunday roasts. Meals are cooked to order and available to eat-in or take-away. To reserve a table please phone **Sue or Nigel on 01449 741434**.
- We brew our own real ales on-site (tours by arrangement) with at least one other from a local independent brewer.
- Our opening times are as follows:

Wednesday	Open 6pm-12am (open mic/buskin night)
Thursday	Open 6pm-11pm (bar games night)
Friday	Open 4pm-12am (full menu 6-9pm, T/Away 5pm)
Saturday	Open 12pm-12am (full menu 12-2pm & 6-9pm)
Sunday	Open 12pm-10:30pm (roast/Sunday menu 12-3pm)
Monday/Tuesday	Closed

# A REAL STRING TO YOUR BOW!

## Would you like to join Scouting in your area?

My name is Graham and I am the District Commissioner for Scouting in the Sudbury District.

I am in the process of finding out if there are any children in the Bildeston/Hitcham area, who would like to join a group, are you over 18 and are interested in becoming a Leader/helper.

It is my intension to put on a road show in Bildeston in the coming months.

Please contact me at the following if you are interested or have any questions.

### Sudbury District Scouts

Call Graham Smith DC on 07983291898  
or Charmain Southgate DDC on 07776450652

[dc@sudburydistrictscouts.org.uk](mailto:dc@sudburydistrictscouts.org.uk)



[scouts.org.uk/join](http://scouts.org.uk/join)

© Copyright 2012 The Scout Association Registered Charity number 200157 (England and Wales) and SC08407 (Scotland)





## Six Acre Productions presents

# THEF

A COMEDY THRILLER  
by Eric Chappell



**Friday 22<sup>nd</sup> May**  
**Saturday 23<sup>rd</sup> May**  
**Sunday 24<sup>th</sup> May**

### Nedging Hall

A  
performance  
in the Barn

Nedging Tye  
IP7 7HG

Courtesy of Mrs G Buckle

**Tickets £6**

Raising money for



Contact

# 07508472142

**sixacreproductions@live.co.uk**

[www.sixacre.webs.com](http://www.sixacre.webs.com)

**Recommended Age: 14 +**

## SESAW NEWS FOR APRIL

Greetings from Oliver, resident cat at SESA. poisoned, rescued and nursed back to health but now very wary of people. That upstart, Kenneth, blotted his copy book when he led a canine chorus during Mother's radio interview. Fortunately this did not spoil the Pets Corner broadcast and two rabbits were rehomed. Another time Mr. Smartipants got caught in a cat trap. He kept quiet as we searched the garden, just when a bark would have been helpful. The good news is Angel and Harvey have a new home but more dogs are waiting. Visit us to choose your canine pal and make my day, please! Cats are always waiting for a loving home too. Thank you to the Uni volunteers who helped stain kennels and renew fencing. Our next fundraising event is a big table sale on Sunday 12 April at the Old School, Long Melford. 10 to 3pm. Hope you appreciated Oliver's observations, but it's far too arduous for a cat so Kenneth will be back next month. He's a good ambassador, but really - a dog, the Boss? Ollie (the Black) Cat.

Suffolk & Essex Small Animal Welfare, Reg.Charity No.1124029.

Stoke Road, Leavenheath, CO6 4PP. 01787 210888. [www.sesaw.co.uk](http://www.sesaw.co.uk) [info@sesaw](mailto:info@sesaw).



# BILDESTON ELECTRICAL

Rewires, Extensions, Board Changes or New Installations

Any Alterations to Existing Installations

(lights, sockets, etc.)

Contact Ian

01449 743664 or 07754 723685

- ❖ Home Maintenance
- ❖ Carpentry
- ❖ General Building Work
- ❖ Brickwork & Blockwork
- ❖ Stonework
- ❖ Hand Built Sheds
- ❖ Floor & Wall Tiling
- ❖ Paving & Patios
- ❖ Kitchens & Wardrobes
- ❖ Pergolas
- ❖ Carpentry
- ❖ Bespoke Fencing
- ❖ Property Maintenance
- ❖ Repairs
- ❖ Advice & Planning
- ❖ Shop & Office Fitting
- ❖ Renovation Work
- ❖ No Job too small



**Bob Buckle**  
Carpentry & Building Services

**Bildeston, Suffolk. IP7 7ED**

**For a prompt & reliable service.**



**01449 740275 or 07580 753020**

**Email: [bobbuckle10@gmail.com](mailto:bobbuckle10@gmail.com)**

Happy Easter!



D'ENZA



HAIR @ BEAUTY SALON

AT

"KERSEY MILL"

"April Offers"

Spring is here let's get your Hair & Beauty treatments ready for the summer!

**1: Spring offer~ ½ leg wax, OPI shape and paint Manicure & Pedicure**

**Special Price of only £35**

**2: Relaxation offer~ Elemis Taster Facial with a back, neck & shoulder massage**

**Special Price of only £35**

**3: Hair~ Wash, Cut & Style 40% off "Only for April"**

**Special Price of only £15.90**

**4: Men's Hair cuts only in April.**

**Special Price of only £8**

The above offers can not be used with another offer.

Please find us on facebook: [denza.hairbeauty@facebook.com](https://www.facebook.com/denza.hairbeauty)

Please telephone for more information or make a booking on: **01473 829069**

Email: [info@denzahairandbeauty.com](mailto:info@denzahairandbeauty.com) or visit us on Facebook or Twitter for our special offers.

For opening times & brochure please look at our website: [www.denzahairandbeauty.com](http://www.denzahairandbeauty.com)



Kersey Mill, Kersey, Ipswich, Suffolk. IP7 6DP.

# Heating Oil



*...Wish I could just  
get 200 litres*

*Hmm...I've still got  
3/4 of a tank of oil..  
What a waste!!!!...*

*What can I do??..  
Ahh an uplift!!..*

**SOLD**



**Brrrrrrrr!!  
NO HEATING OIL  
the boiler won't start!!**



**01473 558854**



[www.badgerfuels.com](http://www.badgerfuels.com)



[iYell.com](http://iYell.com)

## AN IRRESPONSIBLE DOG OWNER!

Following last issue's item from Della and George, the Bugle received this letter:

*Dear Editor,*

*May I appeal to the person responsible for the dog which soiled the grass in Manor Road. Please take a bag with you when you take your dog for a walk so that the dog mess can be cleared away immediately.*

*We have been told recently that we can bag it and bin it at home if we are not near a village dog bin.*

*If you find it difficult to reach the ground to scoop up the offending stuff, then please take a friend with you to assist.*

*Thank you*

*Janet Ratliff*

Clearly not all dog owners are as responsible as Della and George. In fact the Bugle receives so many items on a regular basis to do with this issue we could rename it **DOG POO MONTHLY!**

Please, please, Bildeston dog owners who tend to leave their dog's mess behind, help keep our village clear of dog excrement for the delight and safety of all.

## BILDESTON COMMUNITY CYCLING

# SPRING WARMER 1

JOIN US FOR A RIDE OF ABOUT 25 MILES,  
STARTING FROM THE MARKET PLACE  
AT 9.30am, ON SATURDAY 11 APRIL.  
CAFE STOP HALFWAY. BACK ABOUT 12.30pm.

The ride will be mainly on quiet lanes, at an acceptable speed (no-one left behind!). Regret no unaccompanied children under 16.

**TUESDAY EVENING RIDES WILL START ON 5 MAY THIS YEAR**

JUST TURN UP; or for more information, contact Robin Weaver 741048

## **Dentist**

**Paul Rolfe BDS**

**Veneers & Crowns in a  
single visit**

**Dental Implants**

**Family Dentistry**

**Lavenham &  
Long Melford**

**01787 882722**

[www.paulrolfedental.co.uk](http://www.paulrolfedental.co.uk)

## **HATTERS CHIMNEY SWEEPS UK**

[WWW.CHIMNEY-SWEEP.ORG.UK](http://WWW.CHIMNEY-SWEEP.ORG.UK)

**CHIMNEY & FLUE SWEEPING  
FROM £45 INTRODUCE  
A FRIEND AND EARN A  
£10 DISCOUNT STOVE  
MAINTENANCE  
CHIMNEY REPAIRS  
CCTV FLUE INSPECTION**

**01787 281979**



## **COUSINS & SON BILDESTON LTD**

available to carry out all your building requirements

from

**Renovations / Alterations / Extensions**

to

**General Repairs**

Please contact Paul for a free estimate

**01449 744360 or 07876 244461**

or email [paul.cousins268@btinternet.com](mailto:paul.cousins268@btinternet.com)

# BUGLE'S 25TH ANNIVERSARY YEAR

What memories did the March 1996 items about the opening of Chamberlin Hall bring back? For this month we go back and have a look at some of the April Fools jokes that the Bugle has printed over the years. Do you remember these in particular?

## **Important Notice for rural residents.**

**Subject : Bird flu -New contamination possible  
in most rural areas.**

Recent studies conducted on bird flu (for which we have just received conclusive results) indicate that in certain cases this can now be transmitted to humans. We foresee a possible contamination of rural Health Board areas.

A recent subject examined was a regular consumer of Cadbury's Cream eggs and also enjoyed chicken nuggets. Earliest symptoms are first evident if you experience problems with your vision and a desire to peck at your food. Then you seriously need to consider if you have been involved in any Hen Parties lately. Extended periods of illness would seriously affect thinking capacity ( people so inflicted are often referred to as bird-brained ) and subjects would experience trembling sensations in the legs when strutting about, followed by a weightless sensation. If you encounter and persons with such symptoms, keep well away from them and contact the crisis centre in Chickenham.

Dr. C O'Krell  
Rural Health Boards,  
Circular : 01/0406



# Kellogg's Co. UK.

1 Parli Square  
London  
AP1 1ST

Ref : LO/ OF/ 1401

Chairman  
Bildeston Town Council  
Suffolk

Dear Sirs

During a recent product launch in the Eastern Region, a serious breach of copyright has been brought to our attention.

It appears that two weathervanes in Bildeston (Clock Tower and Church Spire) have the symbol of a cockerel in situ.

The trademark of the Cockerel is **exclusive** to Kellogg's and any reproduction of this is a direct infringement of the copyright law.

Our legal department has advised that these weathervanes must be removed with immediate effect.

As a gesture of goodwill, The Kellogg's Company has agreed to fund a replacement design and therefore ask that an alternative design be forwarded to their Product Design Department at your earliest convenience.

We look forward to your immediate co-operation.

Yours sincerely



A F Daye  
Copyright & Legal Executive  
Kellogg's Co. UK.

32.

## THE GOOD NEWS (and even better News)

As most of you already know, the good news is, that after much work, mostly unnoticed, at last we have our "red telephone box" back in its original place in the Market Square.

The even better news is, that B.T. has at last agreed to install a working telephone within it, once more allowing us to make calls in what is mostly a bad area for "mobiles". The installation should take place on 3<sup>rd</sup> April 06 however, B.T. have informed us that because the lines have been unused for a long period there will need to be a cleaning process before the new telephone can be connected, this will be done between 31<sup>st</sup> March and 3<sup>rd</sup> April 06. Because the cleaning may cause some dust to travel through the lines, it will be advisable to cover your handset for this period. The best way will be to place a polythene bag over the handset to catch any dust. You will still be able to make and receive calls, and it will not apply to digital or mobile telephones.

For more information call B.T free on: 01042006

# CHIMNEY SWEEP

## ECO SWEEP CHIMNEY SERVICES

- NEW POWER SWEEPING METHOD USED FOR A MORE THOROUGH CHIMNEY CLEAN THAN BRUSHES.
- INDUSTRIAL HEPA FILTERED VACUUM.
- FULLY INSURED.
- INSURANCE RECOGNIZED CERTIFICATES ISSUED.
- SPOTLESS, RELIABLE AND FRIENDLY SERVICE.
- ALL CHIMNEYS, WOOD BURNERS, AGA, BOILER FLUES SWEPT.
- GUILD OF MASTER SWEEPS CERTIFICATED MEMBER.



TEL. 01359 232335

## BARGEWELL SKIP HIRE

**2 - 8 yard skips**

**1 ton waste bags**

**We also collect any full waste bags**

Long or short term hire

Delivery 7 days a week

Fast & friendly service

**Stowmarket 01449 615056**

Mobile: 07770 452378

High Rd, Gt Finborough, Stowmarket, Suffolk

[www.bargewellskiphire.com](http://www.bargewellskiphire.com)

Credit cards accepted



## Bildeston Ladies Club

At our meeting in March, Linda Arnold came to give us a talk about Breast Cancer. As a cancer survivor herself, she was able to give a sensitive and balanced view of this emotive and extremely important subject. She provided us with plenty of information and emphasised the importance of self-checking and early diagnosis. We were pleased to support Suffolk Breast Cancer Care with a donation and the proceeds from our Raffle. Many thanks to all who donated prizes.



At next month's meeting we will have Collette Barrere giving an illustrated talk entitled A Gardening Life With Alan Bloom At Bressingham. Colette has many years of gardening experience as well as being a retired speaker for the Royal Horticultural Society – I think we are in for a treat! During the evening we will hold a Raffle for Collette's chosen charity – Lupus UK Cambridge Support Group. If any ladies are able to bring donations for the raffle that would be great!

We meet on Thursday April 2<sup>nd</sup> Why not come along and join us?  
Jo Silburn 740504 (Bookings Secretary)



# THE FLOWER SHOP

AT KERSEY MILL

*Local and Nationwide deliveries available* ☎ 01473 805156

*At The Flower Shop our team create all aspects of Floristry from bouquets, arrangements, baskets, wedding and sympathy flowers.*

*Our florists create beautiful arrangements just for you. We use fresh seasonal flowers, purchased daily in all bouquets, baskets and arrangements.*

*Visit The Flower Shop today, order online, call and collect or arrange a delivery.*

 [www.theflowershopkm.com](http://www.theflowershopkm.com) [sales@theflowershopkm.com](mailto:sales@theflowershopkm.com)

*The Flower Shop at Kersey Mill, Ipswich Suffolk IP7 6DP*



# Angel Delights

## Outside Caterer & Specialised Confectioner

Weddings – Christenings – Funerals  
Birthday Parties – Barbecues – Dinner Parties

Traditional tea room now open  
at 85 High Street Hadleigh

**CAKES FOR ALL OCCASIONS**

Contact Helen  
01473 828191  
info@angel-delights.com  
www.angel-delights.com

PARISH OF BILDESTON  
with WATTISHAM  
Advance Notice of

## BILDESTON PRODUCE SHOW

This year the show will be held on Bank holiday Monday 31st August 2015. If you are thinking of entering, there will be something for everyone.

Enthusiasm is the only qualification needed for entry.



Local Caring Independent Funeral Service

24 Hour Personal Service \* Private Chapel \* FREE Parking

[www.andrewbingham.co.uk](http://www.andrewbingham.co.uk)

01449 771666

The Nutshell, Milton Road South, Stowmarket, IP14 1EZ



Golden Charter  
Funeral Plans



Chamberlin Hall Management Committee

**CRAFT FAIR**  
**&**  
**FOOD HALL**  
**At Chamberlin Hall,**  
**Bildeston**

**Saturday 4<sup>th</sup>**  
**& Sunday 5<sup>th</sup> April**  
**10am to 4pm**  
**Lots of Stalls of various**  
**local crafts**

**Refreshments available**

**Free Admission**

**For further details Telephone**  
**(01449) 740995/741253**



Richard Ferris Images

[www.richardferrisimages.co.uk](http://www.richardferrisimages.co.uk)

**Photographer**

Mobile Studio

Pet Photography - Lifestyle

Landscape - Wildlife

**Tel: 07814 119839**

**[richyferrisimages@gmail.com](mailto:richyferrisimages@gmail.com)**



# Zor Boutique at Kersey Mill



Stunning jewellery,  
scarves, bags, purses,  
clothing & shoes. All  
at affordable prices.

Call: 07969525859

Webb: [www.zoronline.com](http://www.zoronline.com)

Email: [zoronline.sales@gmail.com](mailto:zoronline.sales@gmail.com)

Kersey Mill, Stone street IP7 6DP

(Near Hadleigh)





# *Recipe of the Month*

## **Poached Haddock and Poached Egg with Mustard Sauce**

**Flaky poached smoked haddock in white sauce flavoured with a spoonful of mustard, served with poached egg and spinach makes a great lunch/supper dish**

---

### **Ingredients**

- 500ml milk
- half onion thickly sliced
- 1 bay leaf
- 2 x 175g smoked haddock steaks
- 2 tbsp white wine vinegar
- 2 large eggs
- iced water
- 40g butter
- 1 tbsp plain flour
- 1 tbsp English mustard
- squeeze lemon juice
- salt and pepper
- 200g baby spinach leaves

---

### **Method**

1. Pour the milk into a large frying pan, add the sliced onion and bay leaf and bring to a simmer.
2. Carefully place the haddock, skin-side down into the liquid and simmer for 2 minutes then turn over and simmer for another 2 minutes.
3. Meanwhile, add the white wine vinegar and a pinch of salt to a small saucepan of water and bring it to a rapid boil. Whisk the water to create a vortex then crack an egg into the water and cook for 3 minutes.
4. Remove and place straight into iced water, then repeat with second egg.
5. Lift the haddock out of the milk and set aside on a plate, cover and keep warm in a low oven.
6. Strain the milk into a jug through a sieve to remove the onion, then wipe out the pan and return it to the heat.
7. Melt 25g of the butter in the pan then add the flour and cook out for 2-3 minutes. Pour in the reserved milk a little at a time, whisking as it's added to remove any lumps. Cook for 3-4 minutes until you have a smooth shiny sauce.
8. Add the mustard and check the seasoning and texture. Add a little more milk if necessary to make it thick enough to coat the back of a spoon. Add a squeeze of lemon juice.
9. Heat a frying pan until hot, add the last of the butter and the spinach and cook until wilted down and hot through. Drain on kitchen paper then place onto the serving plates.
10. Drop the poached egg back into the pan of simmering water for 20-30 seconds to heat through.
11. Place the cooked haddock on top of the spinach followed by the poached egg, then finish with the mustard sauce over the top.

# WALL TO WALL BUILDERS

Experienced, Professional & Reliable

- Extensions

- New Builds

- Listed Buildings

- Loft Conversions

- Kitchens & Bathrooms

- All Renovation Work  
& Repairs

Richard Bateson

M: 07799 114814

T: 01449 741510

[richardbwtw@gmail.com](mailto:richardbwtw@gmail.com)

[www.walltowallbuilders.co.uk](http://www.walltowallbuilders.co.uk)

## HONEY BEE'S NURSERY

Hitcham Village Hall, Hitcham, IP7 7NE

**FOR CHILDREN AGED 2 – 5 YEARS**

Open Mon, Wed, Fri 9.15a.m. – 12.15p.m. or 3.15p.m.

Tues, Thurs 9.15a.m. – 12.15p.m.

Early Drop Off – 8.30a.m. Lunch Club Daily until 1.15p.m.

Fee's @ 2.50 per hour (3 hour session = £7.50)

**2 Indoor Rooms and Outdoor Areas**

Ofsted Registered

Early Years Funding accepted for all 3 & 4 year olds

2 year old funding may also be available

*Free Taster Session Available*

Contact: Sharon Scarfe 01449 740764 (hall) 01449 740581 (home)



## EAST ANGLIAN AIR AMBULANCE NEEDS VOLUNTEERS

Are you looking for a new challenge this year? Why not volunteer to help local charity **East Anglian Air Ambulance (EAAA)** and play a part in continuing our lifesaving work! EAAA is a 365 day-a-year lifesaving helicopter emergency medical service working across Bedfordshire, Cambridgeshire, Norfolk and Suffolk. Since the charity began 15 years ago, we have attended over 16,000 missions.

In 2015, EAAA are looking to recruit more volunteers across the region to help us celebrate 15 years since the charity began. EAAA will be marking 15 years of service with commemorative events throughout the region, including 'Tea at 15:00' on May 15 at locations all over East Anglia. The Suffolk Fundraising Team are hosting a Volunteer Recruitment Evening on **30 April 2015** in Hadleigh and we would love for you to join us! Come along to the URC Community Room in Hadleigh at 7pm to find out more about the work of the Charity and meet our lifesaving crew. EAAA could not exist without our team of over 200 committed volunteers who continually dedicate their time and skills in many different ways. We are hugely proud of all our volunteers and enormously grateful for the time that they have given over the last 15 years. As a volunteer you will play a vital role in helping us to keep our two helicopters flying 365 days a year across East Anglia. We completely depend on our volunteers to support us in delivering our lifesaving services. Our volunteers choose the time that they can give to us, whether it is on a weekly basis or occasionally helping out at events. Every hour of time given to us makes a huge difference.

If you would like more information, please contact Jenny MacPherson on 01473745007 or [jenny.macpherson@eaaa.org.uk](mailto:jenny.macpherson@eaaa.org.uk).

Please visit our new website at:

<http://www.bildestonhealthcentre.co.uk>

and see the online services we can provide

### **Repeat Prescriptions Online**

You are now able to order your repeat prescriptions online. You must first attend the surgery and speak to any of the reception or dispensary staff and tell them you wish to register for the online services. You must provide some form of identification eg; driving licence or passport, and also your email address, for future reference.

Staff will provide a user name and password. Please take care of your details or you will need to attend the surgery to request a new registration.

To order your repeat medication, simply register on the Bildeston Health Centre website, with your user name and password.

### **Pre-registration for New Patients & Temporary Residents**

New patients and temporary residents can complete a form online, which will be emailed direct to the surgery. Please note you **MUST** still attend the surgery to supply identification and confirm your registration **BEFORE** you can be seen.

### **Travel Questionnaire**

Travelling abroad? Complete a travel questionnaire online, and this will be emailed direct to the surgery. The Questionnaire is passed to the nursing team, and you will be contacted with your vaccination requirements.

## **FRIENDS OF BILDESTON SURGERY (FOBS)**

are having a coffee morning at Nedging Village Hall

18th April 2015 10 a.m. - 12 noon

50p entry includes a drink and biscuit

Usual stalls, including Raffle, Bric - a - Brac and books All Welcome

Canine Wellbeing At The Pheasantry  
Wattisham, Suffolk IP7 7LA  
**Dog and Puppy Day Creche**

We provide a very special service of looking after your dog or puppy. In the comfort of our own home, whilst you are at work, or whilst your dog is recovering from veterinary treatment. Why not allow your puppy to socialise with other canine friends. Daily collection and delivery is available.

## **Dogs on Holiday**

Whilst you are on holiday, why not let your canine friend have one too. She/he can come and stay in the comfort of our own home, where she/he will be treated as one of the family.

**Also available**

### **Canine Hydrotherapy**

For more details phone:

01449 740659 mobile 07956286056

or visit our website: [www.caninewellbeing.co.uk](http://www.caninewellbeing.co.uk)

Workshops in April

# Brook Farm Studio

Regular weekly classes in April:

Tuesday & Friday - Painting

Wednesday - Get Crafty

Thursday - Textiles

Website: [www.brookfarmstudio.co.uk](http://www.brookfarmstudio.co.uk)

email: [brookfarmstudio@gmail.com](mailto:brookfarmstudio@gmail.com)

**Childrens' Craft Club** - 1st and 8th  
10.30am-12.30pm £6

**Creative Embroidery** - Sat 11th  
10.00am-1.30pm £22.50

**Figurative Drawing**- Sat 18th 10.00am-  
1.00pm £10

**Pottery** - Sat 18th 2pm-4.00pm £22.50

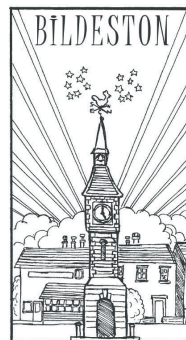
**Wire Workshop** - Sat 25th  
10.00am - 3.00pm

**Booking essential call Hazel on 07432 138966 or 01473 823819**

# BILDESTON PARISH COUNCIL

## DRAFT Minutes of the meeting of Bildeston Parish Council

held on 9th, March, 2015 in Chamberlin Hall at 7.30 pm



### In attendance:

**Councillors:** A Guttridge (Chairman) P Bullen, D Dempsey, D Drury, A Hubbard, R Lester, R Taylor

**Also Present:** D Blackburn (Clerk) Councillor D Keane (Babergh District Council) Ten people comprising members of the public and the developer's representatives (Minute 210/14/15 below refers)

Councillor A Guttridge, the Chair of the Parish Council, opened the meeting and welcomed everyone present.

### C204/14/15 APOLOGIES FOR ABSENCE

Apologies for absence were received from Councillors P Cousins and R Lindsay, and County Councillor Mrs J Antill.

### C205/14/15 DECLARATIONS OF PECUNIARY AND NON-PECUNIARY INTERESTS

Councillors Lester and Taylor declared a non-pecuniary interest by reason of being members of the Kings Pightle Management Committee and Sportsfield Management Committee. Councillor Drury declared a non-pecuniary interest by reason of being a member of the Sportsfield Management Committee. Councillor Guttridge declared a non-pecuniary interest by reason of being a member of Chamberlin Hall Management Committee and an employee of Suffolk County Council.

### C206/14/15 DISPENSATIONS IN RESPECT OF PECUNIARY INTERESTS

There were none.

### C207/14/15 MINUTES OF PREVIOUS MEETING

**It was AGREED:** That the minutes of the meeting held on 9th February, 2015 be signed by the Chairman as a correct record.

### C208/14/15 POLICE REPORT

There was no report on this occasion.

### C209/14/15 OUTLINE DEVELOPMENT PROPOSAL FOR THE TAYLOR'S GARAGE SITE

Mrs Helen Gray addressed the meeting and referred to a proposal to build approximately forty houses on the former Taylor's garage site which extended to two hectares and comprised the brown field area of the garage site and green field area to the rear. In response to questions raised by Councillors, it was confirmed that there would be mixed housing on the site, including some affordable homes, but it was uncertain whether commercial units would be retained as part of the development. Pre-application advice had been sought from the Planning Authority shortly after Christmas. The estimated timescale for completing the development, subject to planning permission, was two to five years.

## **C201/14/15      PRESENTATION ON REVISED PROPOSALS FOR LAND EAST OF ARTISS CLOSE AND ROTHERAM ROAD (B/14/01435)**

The Chair reported that notification had been received from the Planning Authority of revised proposals submitted by the developer regarding the land to the east of Artiss Close and Rotheram Road. It was noted that because notification had only just been received by the Parish Council, it had not had the opportunity to consider the changes fully and to what extent they might address the various objections already lodged by the Parish Council to the outline planning application. However, the developer and his agents had requested to speak at the meeting.

Mr Keith Neill-Smith outlined the revised proposals relating to planning application B/14/01435, which included the following:

- An increase from 48 to 49 properties.
- A change in the mix of residential development which had been made in consultation with Housing Officers at Babergh District Council, with some social rented housing and some shared ownership, and flats also incorporated within the scheme.
- An increase in the open space at the centre of the site to 0.4 hectares.
- An improved visibility splay at the entrance of the site and a proposal to introduce traffic calming measures on Ipswich Road.
- A footpath extension out of the site linking it to Artiss Close to improve walking access to the village centre, making the distance from the centre of the site to a number of village amenities less than 800 metres in accordance with planning policy.
- A restriction on the height of properties on site with a maximum ridge height of 9.5 metres to reflect the local topography.
- An increase in planting around the site.

Members of the Parish Council asked a series of questions about the proposals and voiced reservations about the following matters:

- The scale of development and proposed mix of housing including provision of flats.
- The need to examine better ways of linking the site to the village centre through a more direct route that would improve access and would deter car use.
- The width of the pavement from the site which would be 1.2 metres wide at its narrowest (less than the recommended 1.8 metres) and bring pedestrians into close proximity with traffic. It would also not provide a direct link along Ipswich Road and it was felt this may lead to people choosing to walk in the road instead.
- The selection of village amenities by the developer to justify the 800 metres walking distance, when many village amenities were outside of this distance from the centre of the development.
- The viability of the developer's proposals for traffic calming measures on both sides of Ipswich Road, which appear to be contrary to the advice received previously by the Parish Council from the Highways Authority.

**It was AGREED:** That the Parish Council would convene an extraordinary meeting to consider the proposals and make representations to the Planning Authority.

(Councillor Mrs D Drury declared an interest in the above application by reason of owning property adjacent to the site.)

## **C211/14/15      BABERGH AND MID-SUFFOLK DRAFT LOCAL PLAN**

Members of the Parish Council considered the Draft Local Plan documentation that had been issued by Babergh and Mid-Suffolk District Councils. The Chair referred to information supplied by Mr John Beales on behalf of the 'Keep Bildeston Beautiful' group which highlighted the uncertainties that could be caused by the proposed new conservation area policy. Mr Beales addressed the meeting and identified that DM6 of the Draft Development Policy was less precise than the former CN08 Policy, being potentially more permissive of development which would be prejudicial to the character and amenity of a conservation area.



The Chair referred to CS11 (and supplementary planning documents) on rural growth. Reservations were expressed about;

- The possible relaxation of CS11 to permit sequential developments that would have a significant cumulative effect upon rural communities including core and hinterland villages.
- It was agreed that the current differentiation between core and hinterland villages should be removed and the criteria already applicable to hinterland villages should also apply to core villages.
- CS11 should be more explicit in ensuring that any schemes which sought development beyond village boundaries were proportionate in both scale and character to the village context and fulfilled a local, demonstrable need for more housing.
- The over-riding implication that the planning authority will demonstrate greater flexibility in accommodating rural growth was viewed with concern in promoting development without considering adequately, the proportionality or sustainability of such development.

**It was AGREED:** That the Clerk responds to the Planning Authority on the Draft Local Plan consultation in accordance with the points raised at the meeting.

#### **C212/14/15 COUNTY COUNCIL REPORT**

The Clerk had circulated a written report prepared by County Councillor Mrs J Antill which provided information about the following:

- Reporting of highways problems on-line ([www.suffolk.gov.uk/environment-and-transport/highways/report-a-highways-problem-in-suffolk](http://www.suffolk.gov.uk/environment-and-transport/highways/report-a-highways-problem-in-suffolk));
- A forthcoming Autism Survey in the county.
- The Leading:Lives Benefit Fund which was awarding grants of up to £5000 to Suffolk based community groups and charities in respect of those with disabilities and their carers ([www.leadinglives.org.uk](http://www.leadinglives.org.uk)).

Further to Minute C195/14/15, County Councillor Mrs Antill had approved a request for funding and had awarded £1250 from her 2015/16 locality budget towards essential maintenance works at the Sportsfield pavilion. This would enable the release of £1250 from the Parish Council for the same project as had been approved previously.

#### **C213/14/15 BABERGH DISTRICT COUNCIL**

Councillor D Keane provided a further update on the integration of Babergh and Mid-Suffolk District Councils. He announced that he would not be standing for re-election at the forthcoming District elections and introduced a prospective candidate to those present at the meeting.

#### **C214/14/15 PARISH COUNCIL ELECTION AND POST-ELECTION ARRANGEMENTS**

The Clerk circulated nomination papers for the forthcoming elections to existing Councillors and it was noted that Councillors Cousins and Lindsay had indicated that they would not be standing for a further term of office. Nomination papers should be submitted to the Returning Officer at Babergh District Council Offices, Corks Lane, Hadleigh, IP7 6SJ between the 23rd March 2015 and 4pm on Thursday 9th April 2015. An article had been published in 'The Bugle' and a copy would be placed on the Parish Noticeboard. The Clerk had liaised with Suffolk Association of Local Councils regarding post-election training courses for Parish Councillors. Funding had been allocated in the 2015/16 budget for training and the Clerk would circulate further information after the elections.

**It was AGREED:** That the report be received and noted

#### **C215/14/15 VILLAGE AMENITIES**

Benches had been installed at Kings Pightle and the Biffa grant was expected to be received

within approximately one month. The Tennis Club had undertaken a tidy up at the Sportsfield. The condition survey report on the Chamberlin Hall Playground had been considered by the Management Committee. The Playground Committee was no longer active and it was likely that the Parish Council would be requested to provide financial support for repairs to the playground. The Chair referred to works required at the cemetery in respect of the boundary hedges and he also commented upon the growing number of mole hills at the cemetery. The Parish Council reviewed the cemetery fees as they had not been increased in recent years.

**It was AGREED:**

- a. That a pest control service be engaged to deal with moles principally at the Cemetery, but also at the Sportsfield and Coronation Playground;
- b. That EFMS Ltd be engaged to cut the hedges around the boundary of the cemetery; and
- c. That cemetery fees be increased to £130 and £65 (from £120 and £60) for burial plots with effect from 1st April 2016.

**C216/14/15 CLERK'S UPDATE**

The Clerk reported that Suffolk County Council wished to hold a site meeting with representatives of the Parish Council over proposed sites for the deployment of portable traffic speed monitoring equipment in the village.

**It was AGREED:** That Councillors Bullen and Hubbard would represent the parish Council at the meeting with Suffolk County Council.

**217/14/15 ANNUAL REVIEW OF SYSTEMS OF INTERNAL CONTROL AND RISK MANAGEMENT ARRANGEMENTS**

The Parish Council conducted an annual review of the effectiveness of its internal control and risk management arrangements. The Clerk gave an overview of the documents that had been circulated and answered questions from Members of the Parish Council about current practices.

**It was AGREED:**

- a. That the current versions of Standing Orders and Financial Regulations be approved and adopted, incorporating the protocol on reporting of meetings issued by the Suffolk Association of Local Councils relating to Standing Order 3 (I);
- b. That it be recorded that the review of the Council's Internal Control arrangements has identified no areas of concern;
- c. That it be recorded that the review of the Council's Risk Management arrangements has identified no areas of concern;
- d. That the provisions of the new Transparency Code be noted and the Clerk liaises with the Vice-Chair to ensure compliance with the Code through the publication of the prescribed information;
- e. That, notwithstanding the introduction of the Transparency Code which has been designed to replace external audit, it be noted that the Parish Council will continue to have an external audit conducted by BDO, in addition to an internal audit up to 2017;
- f. That the Clerk seeks quotations from insurance providers for a new insurance policy as the current long-term agreement with Came & Co. will come to an end on the 31st May, 2015; and
- g. That SALC be appointed to conduct the Council's internal audit for the purposes of the 2014/15 audit of accounts and governance arrangements.

(Councillor R Lester declared a non-pecuniary interest with regard to Minute 217/14/15 (f) above, by reason of being an employee of a company that may be asked to submit a formal quotation for the Parish Council's insurance.)

**C218/14/15 AUTHORISATION OF PAYMENTS**

**It was AGREED:** That the following payments be authorised:

Payee	Description	Amount
David Blackburn	Clerk's Pay	£173.09
Babergh District Council	Annual Bin Emptying Charge - Brown Bin	£45.00
Babergh District Council	Annual Dog and Litter Bin Emptying Charge	£568.75
Suffolk County Council	Annual Street Lighting Charge	£2909.13
Suffolk County Council	Replacement Street Lights - 34 High Street and 19 Wattisham Road (£1844.87) and Telensa Cells to all street lights (£2322.00)	£4166.87
Sportsfield Management Committee	Grant funding towards Sports Pavilion Repairs and Maintenance (Minute C212/14/15 refers)	£1250.00

(Note: All items of expenditure to be met from the General Fund with the exception of the replacement lights (£1844.87) from the Asset Replacement Reserve and the Telensa Cells upgrade (£2322.00) from the Projects Reserve.)

## C219/14/15 PLANNING APPLICATIONS

### Planning Appendix A: Planning Application Consultation

<b>Reference</b>	B/15/00139
<b>Address</b>	19-21 Duke Street, Bildeston, IPSWICH, IP7 7EW
<b>Proposal</b>	Application for Listed Building Consent - Internal layout alterations to later single-storey rear lean-to extension, and removal of stud work from existing staircase. Replacement of rear window with French Casement double glazed doors and frame. Replacement of modern existing external stable type door and frame from kitchen with the existing external window from dining room.
<b>Decision</b>	No Objection

**It was AGREED:** That an extraordinary meeting of the Parish Council be held on Monday 16th March, 2015 at 7.30pm to consider the revisions made to planning application B/14/01435-Land at Artiss Close and Rotheram Road, and make representations to the Planning Authority

### Planning Appendix B: Determined by Babergh District Council

<b>Reference</b>	B/15/00071
<b>Address</b>	21 High Street, Bildeston, IPSWICH, IP7 7EX
<b>Proposal</b>	Fell 1 no. Cypress tree and reduce 1 no. Leylandii tree by 1.5m
<b>Decision</b>	Approved

<b>Reference</b>	B/15/00060
<b>Address</b>	Bildeston Hall, Duke Street, Bildeston, IPSWICH, IP7 7EP
<b>Proposal</b>	Reduce 1 No. Willow tree by 30%
<b>Decision</b>	Approved

<b>Reference</b>	B/15/00073
<b>Address</b>	Great Copt Hall, Ipswich Road, Bildeston, IPSWICH IP7 7BH
<b>Proposal</b>	Remove 8 - 10 branches of Horse Chestnut (T1) tree to allow adjacent Copper Beech (T2) tree to grow.
<b>Decision</b>	Approved

### Planning Appendix C: Miscellaneous Items

<b>Reference</b>	Proposed Diversion of Bildeston Public Footpath No.3 (part) - Tankard Farm
<b>Statute</b>	Town and Country Planning Act 1990, Section 257
<b>Decision</b>	No objection subject to the footpath being clearly signposted as a shared space as appropriate.

### C220/14/15 MATTERS TO BE BROUGHT TO THE ATTENTION OF THE COUNCIL

Councillor Bullen referred to the improvements being made at Church Farm with footpaths cleared and hedgerows cut that were improving the appearance of the area.

### C221/14/15 PUBLIC SESSION

A local resident asked about the provision of traffic calming measures and it was clarified that the Parish Council was seeking to have gateway treatments installed at both the Hitcham and Hadleigh ends of the village. In addition, the Parish Council was seeking approval from Suffolk County Council for the deployment of portable Vehicle Activation System (VAS) equipment in the village.

In response to a question about boundaries, Members of the Parish Council felt that the use of 'built-up boundary' in planning documents was useful in referring to the area of established development whereas, the term 'village boundary' was more indeterminate, as it did not clearly refer to the built-up area or the parish boundary. The public was urged to seek advice from the Planning Authority if it required clarification on this point.

### C222/14/15 CONFIDENTIAL BUSINESS

There were no matters to be updated upon

The meeting closed at 9.30pm

## COME DINE WITH ME *£1000 to be won in the South Suffolk area!*

Channel 4 is seeking couples to take part in this ever popular T.V. programme to be filmed in this area. Requirements are a dining table and chairs for 6 people. There must be room for the mobile camera man (on roller skates) to circle the table and the kitchen doorway. Saucepans, cooker and dishes etc should be to a fairly high standard of hygiene acceptability. Cooking ability is almost the least consideration, although a meal of 3 courses must be produced. Any food aversions, diet restrictions or food allergies are not in any way discouraged. Your identity will be protected and your address will not be published.

There will be a short interview in your home by the Channel 4 producer and decisions made without delay. For all details and application forms, contact:

Channel 4 Researcher Miss A. Prill on 0800 010415

# MAY MARKET

Saturday 23<sup>rd</sup> May

10.00 am – 12.00 pm

Bildeston Market Place

**Raffle**

*preserves*

**Tombola**

*Plants*

*Bric - a - brac*  
**Books**      **toys**

*Cakes*

**Refreshments**

**Children's stall**

Proceeds to

St. Mary Magdalene Church, Bildeston.

*Donations for stalls are welcome.*

*Ros Cohen 01449 740530*

*Angela Rodgers 01449 743120*



## Pilates Classes Now Held at Kersey Mill

If you want to exercise both your body and mind as well as improving your sense of well being, strength, flexibility and mobility then I truly believe pilates is for you!

I am passionate about bringing the benefits of pilates to everyone and as a fully qualified teacher certified by Europe's largest professional pilates organisation I can help you improve muscle tone and core stability, building strength from the inside out, re-balancing the body and bringing it into correct alignment.

Please contact me if you wish to join a small matwork class and allow me and the Body Control Pilates method help you achieve your goals. Pilates can benefit anyone of any age and any level of fitness. I look forward to hearing from you.

**Call 07855 394 703 for more info.**  
**[www.pilatesworks4u.com](http://www.pilatesworks4u.com)**

*Jenny*  
x



Body Control Pilates is a registered  
trademark used under licence

Pilates Works 4U, The Studio, The Old Guildhall, Church Lane, Hitcham, IP7 7NN  
[www.pilatesworks4u.com](http://www.pilatesworks4u.com) [pilatesworks4u@gmail.com](mailto:pilatesworks4u@gmail.com) 07855 394 703

# LETTER FROM THE RECTORY

In many ways the Easter story is a horror story: full of jealousy and plot, anger and fear, torture, trial, cruel death and missing body. Thankfully it has a happy ending as all good stories do. But this is no 'Once upon a time story'. For me, and many others it is a true story, one to be believed and treasured. It is not an impossible story - we see and hear of worse atrocities and know new life in many small ways ourselves as we journey through life - the flowers of spring, new relationships, a job again after redundancy, small joys that visit us in grief through friends and loved ones...

For the young we dwell more on Easter than on the events of Holy Week so you will be pleased to know that's the part of the story we will hear most about at the workshop up at St Mary Magdalene's on Good Friday morning. Though we will tell the 'sad story' first. We're going to hear the story, sing it, paint it and make it, act it and even eat it in the symbols of eggs and Hot Cross Buns. All are welcome, not just the children, to come along and join in, to help the littlest ones and be the Easter people of the community together.

May the joy and peace of Easter be yours - Yours, Rev Liz

## **EASTER WORKSHOP MORNING At St Mary Magdalene Church, Bildeston**



**Good Friday, 3rd April,  
10.30-11.30**

**For children aged 4 - 11**

**Craft, music, & story, followed by a mini service at 11.30 for children and adults.**

**Coffee & Hot Cross Buns at 11.40-12**

For more information please ring or e-mail Rev'd Liz 01449 74008

[rev.liz@btinternet.com](mailto:rev.liz@btinternet.com)

**Warning - chocolate may be offered!**



# St. Mary Magdalene

## Bildeston with Wattisham Parish Church

During the Interregnum all enquiries should be made to either  
 The Rural Dean – Revd. Martin Thrower (01449 822218)  
 Or Revd. Liz Law (01449 740085)

Date	Time	Service	
3 <sup>rd</sup> April	10.30am	Good Friday Benefice Easter Workshop followed by short service at 11.30am	Bildeston
5 <sup>th</sup> April	11.00am	Easter Day Holy Communion	Bildeston
12 <sup>th</sup> April	9.30am	Second Sunday of Easter Holy Communion	Bildeston
19 <sup>th</sup> April	11.00am	Third Sunday of Easter Parish Communion	Bildeston
26 <sup>th</sup> April	11.00am	Fourth Sunday of Easter Family Service	Bildeston
3 <sup>rd</sup> May	11.00am	Fifth Sunday of Easter Benefice Service	Semer

## Baptist Church, Duke Street, Bildeston

Jim Haley tel: 01449 740716 email: bildestonbc@gmail.com

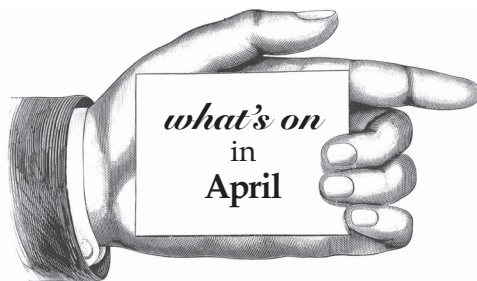
**Service every Sunday morning at 10:45**

**Lunch Club: at 12:30 on the first Wednesday of each month –**

Anyone in the village is most welcome

**Community Coffee Centre: Every Friday from 09:15 to 11:30**

Enjoy meeting old and new friends at these events!



### **Bildeston Community Coffee Centre**

Baptist Church 9:15-11:30 ..... **Every Friday**

### **Craft it Together**

Different Venues: call 01449 740716 for details.....**1st Monday every month**

### **Strollers & Striders**

Baptist Church Car Park 10:00 ..... **Every Monday**

### **Baby & Toddler Group**

Baptist Church 9:15-11:30 ..... **Every Tuesday**

### **Ladies Club**

Chamberlin Hall.....**Thurs 2nd**

### **Chamberlin Hall**

Craft Fair and Food Hall 10am - 4.00pm.....**4th and 5th**

### **Parish Council Deadline**

Nominations for vacancy for councillor.....**Thurs 7th**

### **Spring Warmer 1 Bike Ride**

9.30am Market Square.....**Saturday 11th**

### **Annual Parish Church meeting**

St Mary Magdalene Church.....**Sunday 15th**

### **Friends of Bildeston Surgery (FOBS)**

Coffee morning Nedging Village Hall 10 -12.00.....**Sat 18th**

### **Men's Breakfast**

Baptist Church 8:00am ..... **Last Saturday of the Month**

*More details on events inside.*

**Please tell us about your events in May**

**email: [editor@bildestonbugle.co.uk](mailto:editor@bildestonbugle.co.uk)**



When you're finished with this Bugle please pass it on or recycle it.