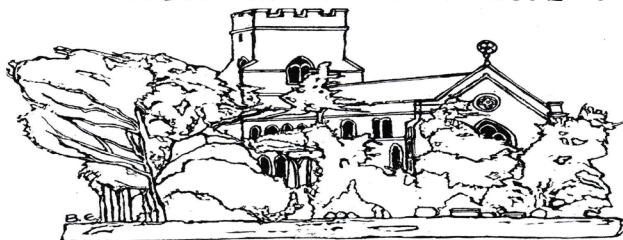


**This issue kindly  
sponsored by -**

**The Seager family  
in memory of Sam Seager  
who passed away in  
December 2005.  
A Bildeston Rangers  
Football Club man  
through and through!**



Saint Mary's Church, Bildeston, Suffolk.

**The village magazine produced for the people of Bildeston**



## BILDESTON BUGLE ADVERTISING AND FREE CONTRIBUTION INFORMATION

Our aim is to provide every resident in Bildeston with a newsletter which provides information of local interest FREE OF CHARGE. To that end we are required to be efficient in the space we use to print free notices. We endeavour to include interesting items, announcements for events open to the general public for free and items of a charitable nature free of charge. Ongoing free announcements need to be reduced to minimum size or make a contribution towards printing costs. Please check with us before submitting your advert and ALWAYS provide us with all of your contact details in order for us to send a receipt.

email: [editor@bildestonbugle.co.uk](mailto:editor@bildestonbugle.co.uk)

*Sponsor a 'Bugle' – £15 per issue*

includes a brief message on the cover of the magazine

### *Advertising Rates*

	1 issue	6 issues (15% disc)	12 issues (30% disc)	
1/4 page	£3.00	£15.00	£26.00	65mm W x 92mm H
1/2 page	£6.00	£30.00	£50.00	134mm W x 92mm H
Full page	£12.00	£60.00	£100.00	134mm W x 190mm H

#### THE SMALL PRINT

All adverts and payments are required by the 17<sup>th</sup> of the month for inclusion in the following month's issue. The earlier free contributions are received the greater the chance of inclusion. Please make cheques payable to Bildeston Bugle and send to:

The Editor, Bildeston Bugle, 14 Squirrells Mill Rd, Bildeston IP7 7DY

Receipts cannot be issued without your full postal address.

If we do not receive payment by the 17<sup>th</sup> of the month  
your advertisement may NOT be included

### The Bildeston Bugle Editorial Team is:

Alan Jacobs (editor) – 14 Squirrells Mill Rd, Bildeston IP7 7DY email: [editor@bildestonbugle.co.uk](mailto:editor@bildestonbugle.co.uk)

Nancy Dales (treasurer) – 142 High St, Bildeston IP7 7EF tel: 01449 741 047

Angie Biddulph – Granary House, High Street, Bildeston

Alison Sims – 1 Squirrells Mill, Bildeston

Vic Ling – 5 Squirrells Mill, Bildeston

# ED'S COMMENT

There has been lots of talk lately around the village, mostly about the proposed developments but some on the piece in the December Bugle on our village hall.

As part of our new item on the Bugle since November 1990, we have been going over all those previous copies and they do make interesting reading as part of our own village social history. Before Chamberlin Hall was built and the village had Dukes Hall here are just some of the things that were being held there on a very regular basis:-

- New Design Club (now the Ladies Club)
- Local people's Craft Stalls
- Cricket Club Whist Drives
- Bildeston Youth Club
- Mother and Toddler Group
- Cake Decorating
- Bildeston Playgroup
- Good Companions Group (Over 60's club)

Other Bildeston residents may well be able to add to that list. It demonstrates the point made in that piece that in those days the village hall was the first and natural venue to use as any other village with their hall. Has the size with its operational costs made it so much more difficult for such 'ordinary' events to be sited there? Casting an eye over that list above we need to remember that many events by their very nature are not about making money. They are about meeting a need for different groups in the village, creating events that bring our community together and putting on activities that enrich our village life. Therefore there can be little expectation of those participants paying a cost that would meet the full operational rates of Chamberlin Hall.

Maybe Chamberlin Hall is a victim of 'competition'. The Baptist Hall, Sports Pavilion and St Mary Magdelene Church all vie for parts of the same 'market'. But surely Chamberlin Hall beats them all in terms of what it has to offer.

The members of Chamberlin Hall Management Committee (CHMC) have the enormous responsibility of running the place, but some questions do seem to emerge.

Firstly, perhaps the time has come for them to be supported by local people with commercial, marketing and business experience and expertise who could help the members of CHMC who may not have those skills. Its Charity status means it should not make a profit, but a surplus to cover unseen eventualities must be acceptable.

Secondly, to help villagers feel more involved with the largest amenity the village has, is it not time the Parish Council minutes included a regular update as it does for the Sportsfield, Sports Pavilion, Kings Pightle, Coronation and hall playgrounds and Skatepark under the heading of Village Amenities? January's very brief mention with no details is the first for a considerable period of time. Being kept informed helps an understanding of the issues involved. After all the hall does belong to the whole village.

Following the fire the hall was improved and it really is palatial and something of which Bildeston can be truly proud. It would be an unthinkable tragedy if it ever got to the point that it wasn't used fully due to lack of funds. So, let us all help the CHMC at least with ideas of what we would like to see there, do there and use it for on a regular basis. Let the Bugle know! Please write or email in with your suggestions.

# Lindsey Painting & Decorating Services

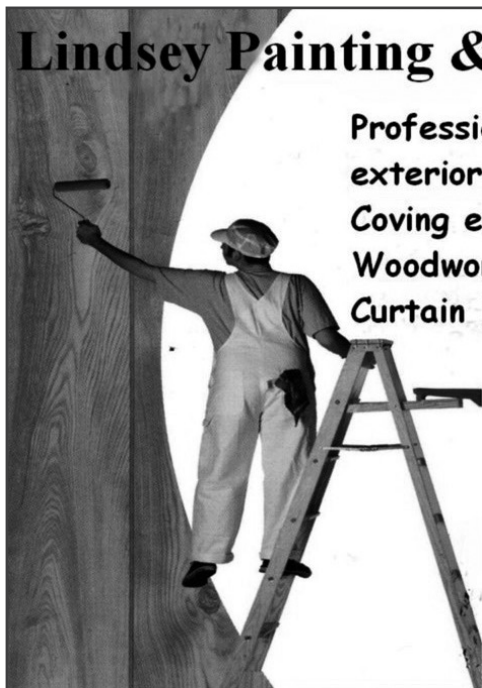
Professional & reliable interior and exterior home decor. Paint, Wallpaper, Coving etc. Plus other allied services, Woodwork, tiling, laminate flooring. Curtain hanging, tracks/pelmets fitted.

Terry Peters

Home 01449 741483

Mob 07809 571790

Email tac59@talktalk.net



## Ashley Hubbard Driving Tuition



Patient, experienced, fully qualified  
ADI DSA Driving Instructor.

Learner – Advanced – Refresher  
Theory Test & Pass Plus Tuition

Competitive rates, door to door  
service in Bildeston, Hadleigh,  
Stowmarket, Needham  
& Ipswich areas.

T: 01449 740633 or M: 07901 563281

E: [ashley.hubbard@btinternet.com](mailto:ashley.hubbard@btinternet.com)

## Bildeston Acupuncture

with  
Colin Widdup  
Dr Ac MChM

Do you suffer from pain?  
Tiredness or lack of energy?  
Mental or emotional stress?

Do you want wellbeing?

[www.bildeston-acupuncture.co.uk](http://www.bildeston-acupuncture.co.uk)

**01449 740996**

9, Chapel Street  
Bildeston.

**Treating you - not your disease**



# BILDESTON PRIMARY SCHOOL

## **Christmas Performance**



At the end of term the children put on a fabulous performance for all of our parents to enjoy. Our reception class children were dressed up in their nativity costumes helped out by the rest of the children singing and playing instruments. Our parents were able to enjoy refreshments after the performance.

## **Fund Raising**

Our children's School Council decided to raise funds this Christmas for the Royal British Legion following the centenary celebrations for the First World War They raised a total of £150. Thank you to all of our parents who helped us with this.

## **Pantomime**

***Oh no you didn't! Oh yes we did.....*** Enjoy the pantomime on the first day back after Christmas. The whole school travelled by bus to Bury St Edmunds to see Cinderella at the wonderful Theatre Royal. The children have been working on literacy and numeracy topics linked to their experience when back in the classroom.



## **Reading Challenge**

The children are all participating in our Reading Challenge to support their reading in school. They must read a selection of different genres and prizes are awarded to those who complete the challenge.



***Watch out for news on upcoming events this term including an Arctic Explorer in School for our younger children, a Key Stage 2 Egyptian Day, KS2 Basketball Tournament and a KS2 Swimming Gala and of course our annual residential trip to Thorpe woodlands in the summer term.***

***What a busy time we will have!***

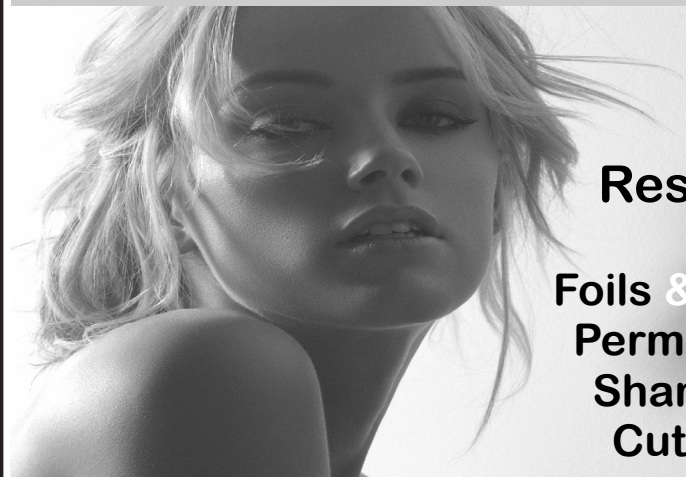
If you are considering Bildeston Primary as a school for your child, we would welcome a visit. Please phone the office on the number below. We would love to meet you.

***"Learning and Growing Together"***  
***Newberry Road, Bildeston, Ipswich, Suffolk, IP7 7EU***  
***Telephone: 01449 740269***  
***Website: [www.bildeston.suffolk.sch.uk](http://www.bildeston.suffolk.sch.uk)***



# *Studio 66*

*Ladies and Gents Hairdressers*



**Restyling**

**Foils & Highlights  
Perms & Colours  
Shampoo & Sets  
Cut & Blow Drys**

**Friendly Service from our Professional Team  
Tue & Wed Senior Citizens**

**\*\*\*special rates \*\*\***

**Opening Times Tues - Friday 9 - 5 pm Sat - 8 - 1pm**



**Tel 01449 740644**

**52A High St Bildeston IP7 7EA**



## **Done & Dusted Cleaning Service**

*We are a professional, reliable, recommended  
family run business offering*

- Domestic Cleaning – regular cleaning or one off spring cleans.
- Small office cleaning
- Ironing service – Collected and delivered back to your door
- Oven Cleaning
- We can take you to the shops or collect your prescription etc. to make your life easier.

*Please Call Us On:*

**Office 01449 258574/Mobile 07775 029579**

### **P.D. ROSE.**

Plumbing / Heating & General Building

- Plumbing & Heating Repairs
- Complete Bathrooms & Tiling
- Int. & Ext, Decorating
- Building Maintenance

**Tel. 01787 211042  
Mob. 07974 290697**

3. Fen Street, Boxford, CO10 5HL

**Friendly Experienced  
Teacher offers  
Individual**

### **MATHS Tuition**

**Speciality  
Confidence Building  
KS1 – KS3**

**Call Colin Plummer on  
01449 736918  
for details and availability  
or email:  
[colinp52@btinternet.com](mailto:colinp52@btinternet.com)**

Karen Finch  
RHAD FSHAA FRSA



# How's Your Hearing?

Take that first step towards better hearing & book a hearing test with **Suffolk's** number one private provider for hearing care!

We also offer home visits to those less able to visit our centres

**The Hearing Care Centre**  
at the  
**Hadleigh Health Centre & Needham Market GP Surgery**

- Hearing tests ■ Latest digital hearing aids
- Outstanding aftercare service
- Ear protection ■ Earwax removal

**Book your hearing test appointment today!**  
**Freephone 0800 096 2637**

or visit [www.hearingcarecentre.co.uk](http://www.hearingcarecentre.co.uk)

■ Award Winning ■ Family Run ■ Private ■ Independent ■ 18 Centres

# COUNTRYSIDE OBSERVER

On one of my dog walking forays up near the church I was delighted to see a Barn Owl. I have kept an eye out for my favourite bird that has been somewhat scarce of late. Good to see we have a resident close to the village. Numbers have recovered hugely thanks to a good summer and explosion in the Vole population. Despite at times thinking the countryside is displaying a "Closed For Business Sign" the earth continues her awakening, along with the longer days and slightly higher temperatures. It has been quite wet and our local streams swollen by the extra water have scoured the riverbanks sweeping away dry dead grasses to make way for the new growth which is beginning to show. Nature's tidy up is carried out further, as strong winds break off dead twigs and branches, and the ground beneath the trees is littered with such prunings. In some cases whole trees fall victim if they are diseased or ageing, and they fall - making way for the next part of the cycle of becoming food for other plants through the action of



fungi and insects. In a surprisingly short time a tree can be reduced to a soft pulp once fungi take hold. Some not-so-are colonised by mosses, and when the mosses really come into and green along branches and easily seen now that the fallen shrivel and darken. It is also this the so-called 'witches' nests' in

of abnormal growth resulting in a mass of tiny twiglets being formed into a ball shape. Peer a little more closely and beneath the dead leaves are the green trefoil like leaves of the wood sorrel.

Snowdrops are beginning to be seen, naturalised in woodland and gardens alike, and each sunny day reveals more and more crocuses and aconites. Even the miniature daffodils are starting to appear and will soon flower. The primroses have made their welcome entrance in sheltered places along with woodland violets and anemones. The catkins are starting to lengthen and begun to produce pollen, though not yet in vast quantities. Last year's new growth on the brambles is still green - a useful food item for the deer and the ferns have not yet lost all their green branches. Amazingly, the new green leaves on the honeysuckle are well advanced, they seem unaffected by frosts, and the elder seems to have had new leaves for ages!!

Woodcock have been flushed by my Spaniels, leaving flight until the very last second, so keen are they to remain hidden. The Woodcock comes in from Scandinavia along with the Field Fare to winter here in our supposedly better climate. I am told the Woodcock as a game bird is delicious to eat, I though prefer to see them wild and free. Blue Tits and Blackbirds are making their first forays, looking for possible nest sites and inspecting last year's. Seagulls are beginning to return from their winters at sea, to scavenge locally. In the ponds and secluded pools frogs have gathered to mate, the silence broken only with their croakings whilst their heads pop up at intervals out of the water. In some ponds there is already frogspawn on the surface of the water. All in all there is a lot going on in February. **Mike**



# Bildeston Sportsfield Pavilion



## looking for a venue?

Function room and sportsfield for parties, events, rehearsals, meetings, clubs and much more.

For more information and competitive rates please ring 01449 741563  
or e-mail [secretary@sportsfield.bildeston.org](mailto:secretary@sportsfield.bildeston.org)

## BILDESTON COMMUNITY CYCLING

# WINTER WARMER 5

JOIN US FOR A RIDE OF ABOUT 25 MILES,  
STARTING FROM THE MARKET PLACE  
AT 9.30am, ON SATURDAY 21st FEBRUARY.  
CAFE STOP HALFWAY. BACK ABOUT 12.30pm.

## PUT IT IN THE DIARY NOW!

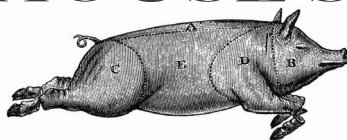
Warm clothing recommended. The ride will be mainly on quiet lanes,  
at an acceptable speed (no-one left behind!). Regret no  
unaccompanied children under 16.

JUST TURN UP; or for more information, contact Robin Weaver 741048

FAMILY GROCER PROVISIONS OFF LICENCE

# BANK HOUSE STORES

Richard & Joan  
O'Sullivan



telephone  
01449 740403

**Shop locally - and help keep Bildeston beautiful!**

At Bank House Stores you can buy a lottery ticket, post a parcel, get cash, pay some bills, buy fresh croissants and baguettes - **and now pay the Dartford Crossing charge - 7 days a week!**

We have daily deliveries of milk and bread; eggs from Hart's of Baylham; bacon, ham and sausages from Broadland Hams and fresh bread from Sparling and Faiers of Lavenham. Getting in the car to do your shopping can cost you more than you think. Check out our special offers, available up to 7<sup>th</sup> February:

Cirio Tomatoes 4 pack	Less than $\frac{1}{2}$ Price	Only £1.95
Ambrosia Custard or Rice Pudding 400g		Only 50p
Branston Baked Beans 410g		Only 50p
Green Giant Sweetcorn 198g		Only 50p
Kellogg's Cornflakes/Special K/Frosties		Only £1.75
Quaker Oat So Simple	Less than $\frac{1}{2}$ Price	Only £1.29
Ristorante Pizzas		Only £2
Activia Yoghurt 4-pack	Half Price	Only £1.14
Andrex Family Pack	12 Rolls	Only £5
Isla Negra Chilean Wines		Only £4.99
Marques de Monistrol Vintage Cava		Only £5.89
Treviso Prosecco	Half Price	Only £6.49

(fantastic bargains for St. Valentine's Day)

.....plus many, many more.

**We are open from 7am to 7pm (6.30 for the Post Office - 6 o'clock on Wednesdays) Monday to Saturday and 8.00 to 12.00 every Sunday and Bank Holidays.**

# BUGLE'S 25TH ANNIVERSARY YEAR

The Bugle has had a great response about our new regular item delving deep into the ancient archives of our village magazine! Wasn't it interesting to see what the very first Bugle looked like? We even had a call asking when the Youth Club was on! So here is the second example, this time taken from the Bugle of 15 years ago, February 2000. Does anyone know who the 'Tower Correspondent' is, or was? Do please let us know.

12.

## BILDESTON BELLS RING OUT

On Saturday the 18<sup>th</sup> December 1999 a unique event occurred at St Mary Magdalene church here in Bildeston.

Due in part to the state of the bells in the early years of the century and the tower collapse disaster in 1975, no significant bellringing had been recorded.

With time fast running out until the end of the year it was decided to mark the passing of one hundred years with a special event.

A team of six expert ringers was brought together from around the county to ring a "Full Peal". This means that they would ring the church bells for approximately three hours without stopping, some marathon I think you would agree!

It was a clear day on the Saturday and hopefully many in the village heard the chimes, certainly a number of villagers were drawn to the church during the ring but may not have been fully aware of what was being attempted.

It is hoped that in the not too distant future, a commemorative board will be obtained, giving details of this successful ring complete with the names of the six ringers. It would then be located in the tower.

We look forward to the day when this magnificent ringing feat can be repeated, but with a band made up from local people.

Tower Correspondent.



# BASE GARAGE LTD

**MONDAY – FRIDAY 7.30 – 6.00**

**SATURDAY 8.00 – 12.00**

- TYRES
- EXHAUSTS
- PUNCTURES
- BATTERIES
- WHEELBALANCING
- AIR CONDITIONING
- LATEST DIAGNOSTIC EQUIPMENT
- WELDING TO MOT STANDARD
- SERVICING & ALL REPAIRS TO ALL MAKES OF CARS  
& LIGHT VANS FLEET DRIVERS WELCOME
- MOT CLASS 4, 5 & 7
- COURTESY CAR AVAILABLE
- COLLECTION & DELIVERY SERVICE 5 MILES RADIUS  
OF GREAT BRICETT
- WINTER CHECKS
- HOLIDAY CHECKS

***£10 OFF!***

***YOUR MOT WITH THIS  
ADVERT***

**LOWER FARM ROAD, GT BRICETT, IPSWICH IP7 7DR**

**01473 658987 / 01473 657704**



# KINGS HEAD & Brewery

Nigel, Susie, Ryan and Freya look forward to welcoming you to the Bildeston Kings Head.

[www.bildestonkingshead.co.uk](http://www.bildestonkingshead.co.uk)

- Here's our **free live music** for **February**: every **Wednesday** is **Open Mic Night** from **8:30pm**; from **9pm on Saturday 21<sup>st</sup>** the excellent **Simon & Lincoln** will be entertaining us with a lively mix of interesting cover tunes; and from **1pm on Sunday 22<sup>nd</sup>** **Kevin Nightingale** will accompany your roast lunch on contemporary classical acoustic guitar.
- Our monthly **charity quiz night** is on **Thursday 26<sup>th</sup> Feb** at 8:30pm, please arrive by 8pm. To book a table telephone Sue or Nigel on 01449 741 434. Thanks to December's teams who raised **£220** for **Macmillan Cancer Support**.
- Our good value homemade food uses quality ingredients that are locally sourced where possible. We are well known for tasty beer-battered fish & chips, delicious boozy beef pie (Suffolk red poll beef) and our freshly prepared traditional Sunday roasts. Meals are cooked to order and available to eat-in or take-away. To reserve a table please phone **Sue or Nigel on 01449 741434**.
- We brew our own real ales on-site (tours by arrangement) with at least one other from a local independent brewer.
- Our opening times are as follows:

Wednesday	Open 6pm-12am (open mic/buskin night)
Thursday	Open 6pm-11pm (bar games night)
Friday	Open 4pm-12am (full menu 6-9pm, T/Away 5pm)
Saturday	Open 12pm-12am (full menu 12-2pm & 6-9pm)
Sunday	Open 12pm-10:30pm (roast/Sunday menu 12-3pm)
Monday/Tuesday	Closed (except bank holidays)



# BARGEWELL SKIP HIRE

2 - 8 yard skips  
1 ton waste bags  
We also collect any full waste bags

Long or short term hire  
Delivery 7 days a week  
Fast & friendly service

**Stowmarket 01449 615056**

Mobile: 07770 452378

High Rd, Gt Finborough, Stowmarket, Suffolk  
[www.bargewellskiphire.com](http://www.bargewellskiphire.com)  
Credit cards accepted

## The Thyme Kitchen

**Making 'thyme' for you!**

**Buffet food for weddings, christenings, funerals, parties &  
all special occasions**

**Selection of homemade Pies, Quiches, Pâtés & Terrines**

**Including a Vegetarian Range**

**Delicious Cakes, Biscuits & Scones**

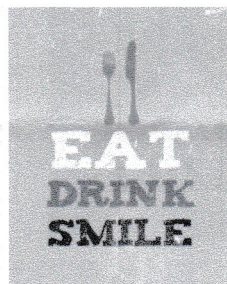
**All available for home delivery.**

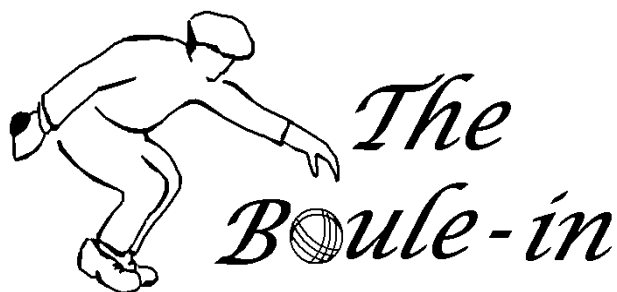
**With over 30 years of experience, contact**

**Juliet Vicary now for more details.**

**01449 740350 [thethymekitchen@hotmail.co.uk](mailto:thethymekitchen@hotmail.co.uk)**

**[www.facebook.com/thethymekitchentld](http://www.facebook.com/thethymekitchentld)**





*STYLISH FRENCH COLLECTABLES*

## **EXHIBITIONS 2015**

Sat 21<sup>st</sup> until Sun 29<sup>th</sup> March

Sat 20<sup>th</sup> until Sun 28<sup>th</sup> June

Sat 19<sup>th</sup> until Sun 27<sup>th</sup> September

Thur 26<sup>th</sup> until Sat 28<sup>th</sup> November

*Open daily 10am – 5pm*

***77 High Street,***

***Bildeston*** *www.boule-in.co.uk Tel*

**01449 740359**

# BILDESTON ELECTRICAL

Rewires, Extensions, Board Changes or New Installations

Any Alterations to Existing Installations

(lights, sockets, etc.)

Contact Ian

01449 743664 or 07754 723685

- ❖ **Home Maintenance**
- ❖ **Carpentry**
- ❖ **General Building Work**
- ❖ **Brickwork & Blockwork**
- ❖ **Stonework**
- ❖ **Hand Built Sheds**
- ❖ **Floor & Wall Tiling**
- ❖ **Paving & Patios**
- ❖ **Kitchens & Wardrobes**
- ❖ **Pergolas**
- ❖ **Carpentry**
- ❖ **Bespoke Fencing**
- ❖ **Property Maintenance**
- ❖ **Repairs**
- ❖ **Advice & Planning**
- ❖ **Shop & Office Fitting**
- ❖ **Renovation Work**
- ❖ **No Job too small**



**Bob Buckle**  
**Carpentry & Building Services**

**Bildeston, Suffolk. IP7 7ED**

**For a prompt & reliable service.**



**01449 740275 or 07580 753020**  
**Email: [bobbuckle10@gmail.com](mailto:bobbuckle10@gmail.com)**



# GARDEN GUBBINS

## SNOWDROPS

One single plant has appeared in my garden, sited in a sunny spot. Soon we should see lots more in the borders and under hedges etc. These welcome clumps of green and white really raise the spirits and thoughts turn to getting ready for Spring.

They will flower during the harshest weather as well as shrugging off a covering of snow.

Remember that they are able to be lifted 'in the green', which means while in bloom, and replanted. So if a friend offers them, take a scoop and replant them. Very few plants are as obliging and rewarding.

It is not too early to get ready to sow and plant.

Don't throw away empty seed packets as they will provide valuable information about plant height, spacing, watering requirements etc.

When sowing seeds which you have never tried before, sow a few in a separate pot for reference. This way, when the seeds start to emerge, you will know what to look for, and not confuse them with weeds.

*Small print.*

If a label on a plant says that it needs full sun, it means it requires 8 hours direct sunlight a day. (don't we all?)

If it requires shade, this means less than 4 hours sunlight a day, and part sun means 4 to 6 hrs a day.

In our climate these conditions are not always possible, but the plant will reward you if you try.

*Planting by the moon.*

It is suggested that seeds are sown between 2pm and 4pm. This way the temperature sensitive phase of the germination process is completed at night when the soil temperatures are lower and there will be a better rate of germination.

Happy gardening.

# Heating Oil



*...Wish I could just  
get 200 litres*

*Hmm...I've still got  
3/4 of a tank of oil..  
What a waste!!!!...*

*What can I do??..  
Ahh an uplift!!..*



*Brrrrrrrr!!  
**NO HEATING OIL**  
the boiler won't start!!*



**01473 558854**



[www.badgerfuels.com](http://www.badgerfuels.com)





**C.H.A.Ps**  
**Proudly Present**  
**DICK**  
**WHITTINGTON**



**At Chamberlin Hall, Bildeston**

**Gala Performance on Friday 30<sup>th</sup> January 2015 at 7.30pm**  
**Adults £5 Children £3**

**Saturday 31<sup>st</sup> January 2015 at 7.30pm**

**A matinee on Sunday 1<sup>st</sup> February at 2.30pm**

**Friday 6<sup>th</sup> February 2015 at 7.30pm**

**£7 Adults £5 Children**

**Saturday 7<sup>th</sup> February 2015 at 7.30pm**

**£12 Adults £8 Children including Free Food**

**Tickets on Sale from 5<sup>th</sup> January 2015 from**  
**June Taylor on (01449) 740995**

## **Dentist**

**Paul Rolfe BDS**

**Veneers & Crowns in a  
single visit**

**Dental Implants**

**Family Dentistry**

**Lavenham &  
Long Melford**

**01787 882722**

[www.paulrolfedental.co.uk](http://www.paulrolfedental.co.uk)

## **HATTERS CHIMNEY SWEEPS UK**

[WWW.CHIMNEY-SWEEP.ORG.UK](http://WWW.CHIMNEY-SWEEP.ORG.UK)

**CHIMNEY & FLUE SWEEPING  
FROM £45 INTRODUCE  
A FRIEND AND EARN A  
£10 DISCOUNT STOVE  
MAINTENANCE  
CHIMNEY REPAIRS  
CCTV FLUE INSPECTION**

**01787 281979**



## **COUSINS & SON BILDESTON LTD**

available to carry out all your building requirements

from

**Renovations / Alterations / Extensions**

to

**General Repairs**

Please contact Paul for a free estimate

**01449 744360 or 07876 244461**

or email [paul.cousins268@btinternet.com](mailto:paul.cousins268@btinternet.com)

# THE BUGLE INTERVIEW

One of the most poignant and inspiring highlights of the Christmas television programmes were the two BBC episodes of 'The Choir – New Military Wives' with Gareth Malone. It was a documentary detailing the process of military wives' singers working towards their performance at the Royal Albert Hall to mark the centenary of WW1. Amongst the choir was our own Cate Neville, a member of the Wattisham Military Wives Choir and resident of Bildeston. The Bugle took the opportunity to interview her.

## ***How did you first become involved with the Wattisham Military Wives choir?***

After the successful Gareth Malone programme, the Choir, featuring the wives of Chivenor and Plymouth, my good friend and fellow military wife, Sally Wilkinson, suggested we start a choir at Wattisham. She found a Choir Master and a venue and we had our first rehearsal in February 2012. We have been going strong ever since!

## ***What does it mean to you to be a member of the choir?***

I love being part of the choir and it has provided with me some wonderful and exciting opportunities over the last 3 years. However, the best thing about the choir is the friendships I have made and the huge amount of fun I have every Tuesday singing my heart out! For military wives, having something to look forward to each week and a support network is often a real lifeline, especially for those whose partners are deployed.

## ***What are the practicalities of being a member, when and where do you rehearse?***

### ***Who leads? Who chooses the music, where to perform etc.?***

We rehearse every Tuesday evening from 6.30pm – 8.30pm at the church at Wattisham station. We have a brilliant Choir Mistress, Zoe MacLachlan, who has been with us since September 2014. The choir, along with Zoe, decides which music we would like to learn and there are a number of core Military Wives' songs that all Military Wives choirs across the network learn, such as 'Wherever You Are'. We try to do a variety of performances and last year we performed all over Suffolk and performances included our own concert at the John Peel Centre in Stowmarket and the Bury Christmas market.

## ***How did the performance at the Royal Albert Hall come about? How were members of all the choirs selected?***

At the beginning of last year, all the Military Wives choirs were sent information from Gareth Malone about an exciting project to sing at the Proms. He needed 100 ladies and devised a series of technically challenging singing tasks in order to try and select singers for the event. In order to apply we had to send a video of ourselves singing the tasks and send in an application form. Gareth Malone then had the difficult task of selected his top 100 from around 400 auditions.

***What is Gareth Malone like in person? Can you share with us the experience of being trained by him?***

Gareth is very like the person you see on the television; he is passionate about singing, great fun and really does inspire people to want to sing. He worked us extremely hard, as he needed to get us to the standard required for singing at the Proms. The music was tough to learn and all classical, which many of us didn't have previous experience of singing. At times our task seemed overwhelming but we all had the utmost faith in Gareth getting us ready. He trained us to be able to sing in a completely different way, showing us techniques and helping us identify with the music and sing with emotion.

***Can you put into words the experience of singing at the Royal Albert Hall in such an emotional atmosphere, full of special meaning for military wives?***

We spent so much time rehearsing and working extremely hard, that the enormity of what we were doing didn't really hit me until we had our first rehearsal in the Royal Albert Hall. Suddenly, it became very clear what an important role we had in the War Horse Prom and what an honour it was going to be. On the Prom performance, I felt so proud to be on the stage in the most magnificent building, representing my husband and all military wives. It was incredibly emotional singing the songs, all of which had a significant meaning to us and being part of the very important commemoration of 100 years since World War 1. It was an experience I shall never forget.

***Many of us, who know you, recognised you on the television as you were shown many times! How did you feel seeing yourself on the 'box' and what did your own family say?***

The documentary was being filmed the whole time we rehearsed, so we all hoped we might be spotted on the documentary at some point, albeit a fleeting glimpse. It was very odd seeing myself on there and we all reacted by mostly screaming at the television!

***The concept of the Military Wives choir has grown and spread throughout the country, what do you think 2015 holds for the choirs in general but your Wattisham choir in particular?***

I think that the Military Wives choirs network will continue to grow and see more choirs starting up across the country in 2015. For Wattisham, we will hopefully continue to perform across Suffolk, at a variety of events and we are also aiming to join up more often with other local Military Wives choirs, such as Colchester and Honington. There is such a strong bond between the ladies at the choir, and between the choirs themselves, and we are incredibly privileged to still have so much support from the public and people who love to hear us sing.

*The Bugle thanks Cate so very much for this and wishes all the Military Wives and, of course, their husbands and family, well for the future.*

## CHIMNEY SWEEP

### ECO SWEEP CHIMNEY SERVICES

- NEW POWER SWEEPING METHOD USED FOR A MORE THOROUGH CHIMNEY CLEAN THAN BRUSHES.
- INDUSTRIAL HEPA FILTERED VACUUM.
- FULLY INSURED.
- INSURANCE RECOGNIZED CERTIFICATES ISSUED.
- SPOTLESS, RELIABLE AND FRIENDLY SERVICE.
- ALL CHIMNEYS, WOOD BURNERS, AGA, BOILER FLUES SWEPT.
- GUILD OF MASTER SWEEPS CERTIFICATED MEMBER.



TEL. 01359 232335

# FIREWOOD

## DRY SEASONED LOGS

Various Loads Available  
Or bags at £5.50 each

Call Carol Abbott on 01473 829130  
or 07768 795981

Tree, Garden Work and Driveways also  
Undertaken







## Bildeston Ladies Club

During January there was no club meeting, but we have lots planned for the coming months – why not come along and give us a try – we welcome guests at £3 a meeting and would love to see more new members.

Our first meeting of the year will be on February 5<sup>th</sup>, a good place for any new members to start, as this will be a fun Foodie Fact quiz, followed by pudding tasting! (As if we didn't eat enough over Christmas and the New Year festivities!)

Any lady who wishes to submit her favourite pudding (hot or cold) is asked to bring it along on the night with a label telling what it is, but not named as we shall be voting for our favourites. We do not think that our taste buds could cope with tasting one pudding from every member, so there is absolutely no need for all you ladies to feel that you have to show off your cooking skills – I'm sure we will have plenty to try. If you have not already told me of your intention to enter a pudding into the event, please could you give me a ring and let me know what it will be, so that I can prevent us having lots of the same to try and also prepare the score-board !!



Did you ladies make a New Year's resolution? – why not make it one to join our Club and make some new friends! Jo Silburn 740504 (Bookings secretary)



**Local Caring Independent Funeral Service**

24 Hour Personal Service \* Private Chapel \* FREE Parking

[www.andrewbingham.co.uk](http://www.andrewbingham.co.uk)

**01449 771666**

The Nutshell, Milton Road South, Stowmarket, IP14 1EZ



**Golden Charter**  
Funeral Plans



# *Angel Delights*

## **Outside Caterer & Specialised Confectioner**

*Weddings – Christenings – Funerals  
Birthday Parties – Barbecues – Dinner Parties*

**Traditional tea room now open  
at 85 high Street Hadleigh**

**CAKES FOR ALL OCCASIONS**

Contact Helen  
01473 828191  
[info@angel-delights.com](mailto:info@angel-delights.com)  
[www.angel-delights.com](http://www.angel-delights.com)

## **A.J. Deering**

### **Roofing Specialist**



Slating

Tiling

Lead

Zinc

Copper

Repairs and complete roofs

**01449 744 513**

[andrewdeeringleather95th@yahoo.co.uk](mailto:andrewdeeringleather95th@yahoo.co.uk)

**25 years experience**

# **WALL TO WALL BUILDERS**

**Experienced, Professional & Reliable**

- Extensions
- New Builds
- Listed Buildings
- Loft Conversions
- Kitchens & Bathrooms
- All Renovation Work  
& Repairs

**Richard Bateson**

M: 07799 114814

T: 01449 741510

[richard@bateson1.eclipse.co.uk](mailto:richard@bateson1.eclipse.co.uk)

Dear Editor

In response to the argument made for the development of Bildeston by 'Tim' in the latest edition of The Bildeston Bugle:

Dear Tim, I am a little concerned about your argument for this development. You state the quantity and range of businesses in Bildeston during the 60's, begging for a return to this time of 'prosperity'. Tim, the world is a different place now. We have large supermarkets, shopping centres and, most fortunately, the internet. A key flaw in your argument is that you think the building of 300 new homes in Bildeston will generate more shops. The developments on Newberry Rd and Squirrels Mills that you mention didn't have the effect you hope for and our shops are STILL in decline. Building 300 new homes will not result in us returning to the commercial hub we may have once been. It will mean 600 more cars commuting through Bildeston on their way to and from work in other larger towns and shopping at large retail facilities. Meanwhile, we will all be dodging the traffic, cursing the pollution on our High Street and queuing for a lot longer at the Medical Centre. Bildeston is the second smallest of the ten core villages in the Babergh area. Like every village in the South East and east of England, we are under attack by land-owners that are trying to cash in on this ridiculous and unfounded demand by Central Government to build huge quantities of new housing without any proven need. Further, most of Bildeston sits in a Conservation Area which has a legal precedent to be protected. In truth Tim, your opinion is outdated, outlandish and somewhat ill-considered. I fully accept that Bildeston needs to grow but wish for this growth to be gradual, and to enhance the character of our village. Bildeston is beautiful. It is worth protecting, for our children, our heritage and our locality.

**Shaun Moffat** 9-11 Duke Street, Bildeston, Suffolk, UK IP7 7EW

The Bugle has received a lovely letter from **Maudie Jepperson** who used to live at Hill House, Newberry Road, Bildeston.

Maudie has asked us to pass on her good wishes to everyone in Bildeston with a huge thanks to all her friends and neighbours who remember her. She wants to thank you all for your friendship and kindness over the years. Maudie says she liked living in Bildeston so much and only moved to be nearer her family for health reasons.

The Bugle is very happy to oblige Maudie and, like all her friends in Bildeston, sends her the very best wishes for the New Year.



Richard Ferris Images

[www.richardferrisimages.co.uk](http://www.richardferrisimages.co.uk)

**Photographer**

Mobile Studio

Pet Photography - Lifestyle

Landscape - Wildlife

**Tel: 07814 119839**

**[richyferrisimages@gmail.com](mailto:richyferrisimages@gmail.com)**



*Tired of Housework?*

**COUNTRY MAIDS**

*A highly experienced home cleaning service*

Established over 24 years, COUNTRY MAIDS provides a service for all home cleaning from brass, ovens, windows, kitchens and polishing.

All materials and equipment provided.

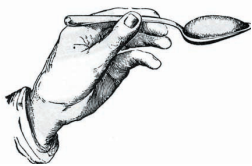
No contracts.

For a free quote telephone:

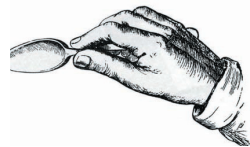
**(01449) 741108**



*I may not agree  
with you, but  
I defend your  
right to speak  
within the law!*



## *Recipe of the Month*



# **Fastest ever Lemon Pudding**

**Prep: 5 mins   Cook: 4 mins + 1 min resting. Serves 4**

---

### Ingredients

- 100 g caster sugar
- 100 g softened butter
- 100 g self-raising flour
- 2 eggs
- zest of 1 lemon
- 1 tsp vanilla essence
- 4 tbsp lemon curd
- creme fraiche or ice cream, to serve

- **Tip**

Cheat's chocolate sponge

Beat 25g cocoa powder into the sponge mix instead of the lemon zest. If you have any chocolate in the cupboard, chop 25g chocolate roughly and stir through. Microwave as before. Meanwhile, put 4 tbsp readymade chocolate sauce into a bowl. Heat through, and then pour over the pudding. Serve with ice cream or double cream

---

### Method

1. Mix the sugar, butter, flour, eggs, lemon zest and vanilla together until creamy, then spoon into a medium microwave proof baking dish. Microwave on High for 3 mins, turning halfway through cooking, until risen and set all the way through. Leave to stand for 1 minute.
2. Meanwhile, heat the lemon curd for 30 secs in the microwave and stir until smooth. Pour all over the top of the pudding and serve with a dollop of creme fraiche or scoops of ice cream.



## BILDESTON RANGERS FOOTBALL CLUB

The festive period seems to have been and gone as quickly as ever and we all hope 2015 is a good year for everyone. Here are the fixtures to the end of the season which weather and pitch conditions permitting will see the Reserves last game being late March and with one fixture not yet allocated the First Team finishing late April.

7/2/15 First Team No game Reserves H v Elmswell Res

14/2/15 First Team H v Adhara Reserves No game

21/2/15 First Team A v Boxford Rovers Reserves H v Felixstowe Harpers United A

28/2/15 First Team A v AFC Hoxne Reserves H v Chantry Grasshoppers

7/3/15 First Team H v Boxford Rovers Reserves A v Kesgrave Kestrels

14/3/15 First Team H v Stonham Aspel Reserves A v Ufford Sports Reserves

21/3/15 First Team A v Bacton Utd 89 Reserves H v Sizewell Associates

(Last game)

28/3/15 First Team A v Bartons

4/4/15 First Team H v Trimley Red Devils

11/4/15 A v Adhara

18/4/15 H V Salvation Army



At the time of completing this article the teams are mid table in their respective divisions and unfortunately neither are now competing in the Cup competitions.

All at the Club appreciate your support and here's hoping for a good run into the end of another season for both sets of players. Ruth FINBOW (Secretary)

## BILDESTON BUGLE ON THE WEB

The Bildeston Bugle has a new website address and page. From this month to read the Bugle on-line please go to:

**<http://bugle.bildeston.org>**

The Bugle wishes to record its thanks to Dan Newman who has been responsible for uploading the Bugle until now and looking after the web page. From this month we are extremely grateful to Robin Taylor who has taken over the task. It is an important service to our villagers, advertisers and many followers who do not live in the village and get a free copy. The on-line version is in full brilliant colour and goes live when the copies are distributed around the village. Take a look!



# Little Krafts

20 Bury Street, Stowmarket, IP14 1HH  
(Situated at the rear of Harts Homebrew & Crafts)

## Ideal for Christmas Gifts

- Gibsons Games & Puzzles • Melissa & Doug
- NEW House of Puzzles Range
- Classic Wooden Toys • Latest 2014 Puzzles
- Perfect Party Presents from £3.99
- Fun, Education Toys

The ONLY Puzzle Shop in Stowmarket



Tel: 01449 674888 / 07919 508715

Email: [littlekrafts@yahoo.co.uk](mailto:littlekrafts@yahoo.co.uk)



## HONEY BEE'S NURSERY

Hitcham Village Hall, Hitcham, IP7 7NE

### FOR CHILDREN AGED 2 – 5 YEARS

Open Mon, Wed, Fri 9.15a.m. – 12.15p.m. or 3.15p.m.

Tues, Thurs 9.15a.m. – 12.15p.m.

Early Drop Off – 8.30a.m. Lunch Club Daily until 1.15p.m.

Fee's @ 2.50 per hour (3 hour session = £7.50)

### 2 Indoor Rooms and Outdoor Areas

Ofsted Registered

Early Years Funding accepted for all 3 & 4 year olds

2 year old funding may also be available

*Free Taster Session Available*

Contact: Sharon Scarfe 01449 740764 (hall) 01449 740581 (home)



# AARON HARVEY MAKES ENGLAND JUNIOR TEAM

He's only gone and done it! Bildeston boy Aaron Harvey has been selected to represent England in the junior team at clay pigeon shooting. Thanks to Aaron and his dad, over recent issues the Bugle has been following his progress and we share the family's pride in the news that Aaron will fly out to Florida in April and South Africa in the Autumn to compete against the best at international level.

As Aaron told the Bugle a while ago, it has been an ambition of his to get into the England team, so to have achieved it at just 17 years of age is wonderful news and sets off his new year in great style.

The junior age group is from 16 to 21 which means Aaron is not only amongst the best at his age but amongst shooters up to four years older with that much more competitive experience.

As the Bugle commented before, the possibility of Aaron shooting at the next Olympics in Brazil is growing stronger and stronger. The photograph below is taken from the East Anglian Daily Times which ran a really good piece on Aaron, but the Bildeston Bugle was there first!

Well done Aaron from all of us in the village. We are right behind you... well, it's much safer than being in front!



Canine Wellbeing At The Pheasantry

Wattisham, Suffolk IP7 7LA

## **Dog and Puppy Day Creche**

We provide a very special service of looking after your dog or puppy. In the comfort of our own home, whilst you are at work, or whilst your dog is recovering from veterinary treatment. Why not allow your puppy to socialise with other canine friends. Daily collection and delivery is available.

## **Dogs on Holiday**

Whilst you are on holiday, why not let your canine friend have one too. She/he can come and stay in the comfort of our own home, where she/he will be treated as one of the family.

**Also available**

## **Canine Hydrotherapy**

For more details phone:

01449 740659 mobile 07956286056

or visit our website: [www.caninewellbeing.co.uk](http://www.caninewellbeing.co.uk)

Workshops in February

# **Brook Farm Studio**

**Creative Embroidery** - Wed 14th 10.00am-1.30pm £22.50

**Figurative Drawing**- Wed 21st 10.00am-1.00pm £10

**Pottery Classes**- Wed 21st 2pm-4.30pm £20

**Sarah Flowers Millinery Style** -  
Sat 28th 10.00-1.00 £22.50

**Regular weekly classes in February:**

Tuesday & Friday - Painting

Wednesday - Get Crafty

Thursday - Textiles

Please don't forget that Saturday 31st Jan is your chance for informal taster sessions and demonstrations in painting, pottery, creative embroidery and millinery.

**Future events include:**

**Love Wire.** Make a basket from wire

7th March 10.00am - 1.00pm £22.50

**Children's Club.** 18th March 10.30-12.30pm £5

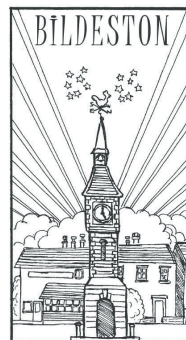
Website: [www.brookfarmstudio.co.uk](http://www.brookfarmstudio.co.uk)  
email: [brookfarmstudio@gmail.co.uk](mailto:brookfarmstudio@gmail.co.uk)

**Booking essential call Hazel on 07432 138966 or 01473 823819**

# BILDESTON PARISH COUNCIL

## DRAFT Minutes of the meeting of Bildeston Parish Council

held on 12th, January, 2015 in Chamberlin Hall at 7.30 pm



### In attendance:

**Councillors:** A Guttridge (Chairman) P Cousins, D Drury, A Hubbard, R Lester, R Lindsay, R Taylor

**Also Present:** County Councillor Mrs J Antill, D Blackburn (Clerk)

Councillor A Guttridge, the Chair of the Parish Council, opened the meeting and welcomed everyone present.

### C168/14/15 APOLOGIES FOR ABSENCE

Apologies for absence were received from Councillors P Bullen, D Dempsey and District Councillor D Keane.

### C169/14/15 DECLARATIONS OF PECUNIARY AND NON-PECUNIARY INTERESTS

Councillors Lester and Taylor declared a non-pecuniary interest by reason of being members of the Kings Pightle Management Committee and Sportsfield Management Committee. Councillor Drury declared a non-pecuniary interest by reason of being a member of the Sportsfield Management Committee. Councillor Guttridge declared a non-pecuniary interest by reason of being respectively an employee of the County Council and a member of Chamberlin Hall Management Committee.

### C170/14/15 DISPENSATIONS IN RESPECT OF PECUNIARY INTERESTS

There were none.

### C171/14/15 MINUTES OF PREVIOUS MEETING

**It was AGREED:** That the minutes of the meeting held on 8th December, 2014 be signed by the Chairman as a correct record.

### C172/14/15 POLICE REPORT

There had been one reported incident during the period 15th December 2014, to 7th January 2015, involving the theft of an unattended bag in the Market Place.

### C173/14/15 BABERGH DISTRICT COUNCIL

There was no report on this occasion.

### C174/14/15 TRAFFIC MEASURES

The Clerk had submitted an application for the use of a Vehicle Activation System (VAS) at three locations in the village. The County Council had acknowledged receipt and an on-site assessment would be made by the Highways Engineer regarding the suitability of the three proposed sites in respect of highway safety. The Chair indicated that there are two types of VAS unit approved by the County Council under the scheme.

## **C175/14/15      STREET LIGHTING**

Further to Minute 162/14/15, an article had appeared in 'The Bugle' regarding the switching off of street lights owned by the Parish Council each night between the hours of 12 midnight and 5.30am with effect from 1st February, 2015. Councillor Taylor had liaised with the Street Lighting Manager at the County Council about this matter to ensure that arrangements were in place to affect the change. This was the same arrangement that had applied to County Council owned street lights for a considerable period of time.

In response to a parishioner's enquiry reported by Councillor Hubbard, it was noted that the street light referred to by the parishioner at Brookfield garages were owned by Babergh District Council and therefore, would not be affected by the Parish Council's decision.

Members of the Parish Council discussed street lighting in Brookfield. A street light had been removed many years previously but not replaced and another was ineffective being located in a local resident's garden. The consensus was that these gaps in lighting coverage should be addressed, if affordable, prior to pavement repairs being planned by the County Council. Councillor Taylor undertook to obtain and circulate updated quotations for the work. The matter would then be considered further at the next meeting.

## **C176/14/15      VILLAGE AMENITIES**

The Clerk reported that an order had been placed for the RoSPA inspections of the Coronation Playground and Chamberlin Hall Playground.

The Chair provided an update on the Chamberlin Hall Management Committee in respect of current levels of usage and financial performance.

The Council's role with regard to the maintenance of the cemetery was discussed. It was noted that, on occasions, some funeral companies had not removed excess soil from the graves they dug on site. Councillor Cousins agreed to provide details of the most recent occurrence so that the Clerk could write, formally, to the company concerned. The presence of dead flowers etc. for prolonged periods on some graves was also raised. The Parish Council wished to encourage people to visit the cemetery and remember loved ones in their own way, but also to safeguard the appearance of the cemetery for the benefit of the community. The Chair undertook to visit the cemetery and assess the extent of the problem with a view to the matter being discussed further at the next meeting.

## **C177/14/15      CHRISTMAS CAROLS IN THE MARKET PLACE**

The Christmas Carols in the Market Place had been successful and well-attended. It was noted that Councillor Taylor would prepare and circulate a list of items required for the event to act as an 'aide-memoire' for the next event in December 2015. The consensus was that a later start time should be introduced so carols could be sung under the Christmas lights as it was getting dark. Councillor Lester recorded the appreciation of the Parish Church for the use of a kettle and provision of mulled wine donated by the Parish Council.

**It was AGREED:** That Christmas Carols in the Market Place be set up at 3.30pm and begin at 4.00pm in 2015.

## **C178/14/15      CLERK'S UPDATE**

The Clerk referred to consultations currently being undertaken regarding the Joint Local Plan for Babergh and Mid-Suffolk District Council and the new Transparency Code for smaller Parish Councils by the government.

#### **C179/14/15 FORWARD PLANNING OF BUDGET SETTING**

The Clerk reported upon the preparation of the budget which would be submitted to the next meeting. The new tax base had been obtained from Babergh District Council and also estimated costs of elections should they be contested in May 2015.

The Parish Council discussed areas of work for the following year including measures to protect the structural integrity and appearance of the Clock Tower.

#### **C180/14/15 PARISH INFRASTRUCTURE REQUIREMENTS**

The Clerk confirmed that the current consultation on local services related to Mid-Suffolk rather than Babergh although the District Council was willing to receive updated information from time to time to keep its records up to date.

#### **C181/14/15 FINANCE, QUARTERLY MONITORING AND AUTHORISATION OF PAYMENTS**

Members of the Parish Council considered the quarterly monitoring report for the period up to 31st December, 2014.

##### **It was AGREED:**

- a. That the budget monitoring report for the period to 31st December, 2014 be received;
- b. That amendments to the report, identified at the meeting, be made by the Clerk;
- c. That the Grants Fund be replenished ahead of the next Annual Grants Round; and
- d. That annual contributions be made to the Asset Replacement Reserve over a period of ten years to fund the replacement of grounds maintenance equipment (ride-on mower, pedestrian mower and trailer).

##### **It was further AGREED:**

- a. That the following payments be authorised:

<b>Payee</b>	<b>Description</b>	<b>Amount</b>
David Blackburn	Clerk's Pay	£173.09
Robin Taylor	Reimbursement of Christmas Sundries	£136.37
HMRC	PAYE to end of December 2014	£576.20
Adrian Chinery	Grounds Maintenance Coordinator's Pay	£56.50

That the following receipt be noted:

<b>Payee</b>	<b>Description</b>	<b>Amount</b>
W A Deacon Funeral Services	Burial Fees	£200.00

#### **C182/14/15 COUNTY COUNCIL REPORT**

County Councillor Mrs J Antill reported on the following matters:

- a. The Local Government financial settlement for 2015/16 had been announced by the government. It continued the pattern of austerity measures that was likely to continue after the elections in May 2015.

- b. Government funding had been provided to support the new Care Act and there had been an unexpected increase to the tax base which meant that the budget could be balanced without relying, at the outset, on the use of reserves.
- c. Improvements had been made to the winter gritting service with changes made to the fleet of gritting vehicles.
- d. Consultation was being undertaken regarding the provision of Sizewell C and D nuclear power plants to overcome the shortfall in electrical generation capacity in the UK. The proposal would be determined by the Secretary of State following consultation.
- e. Funding had been allocated from the Empowering Local Communities Fund towards the use of the bore hole near the Parish Church in Bildeston.
- f. The County Council would be happy to assist with the preparation of the Neighbourhood Plan for Bildeston.
- g. The speed limit sign on Ipswich Road was close to installation now that the wording on the sign and the location was understood.

There was a wide-ranging discussion about national and local planning policy which appeared to support development over and above considerations of its effect upon the local environment and local heritage. At a Neighbourhood Planning Forum meeting held in the village the previous year, it appeared that the District Council was using erroneous information about the number of properties in the village. This was a matter of concern if it was being used to substantiate the amount of development expected within the village in future years. Councillor Taylor undertook to forward details to the Clerk so that clarification could be sought from the District Council.

*(Note: Councillor Lindsay joined the meeting during the above item of business.)*

## **C183/14/15 PLANNING MATTERS**

### **Planning Appendix A: Planning Application Consultation**

<b>Reference</b>	B/14/01434
<b>Address</b>	Land North of Bentons, Wattisham Road, Bildeston
<b>Proposal</b>	Installation of 25m shared telecommunication mast with 6 antennas, 2 transmission dishes and ground based apparatus within a fenced compound
<b>Decision</b>	No Objection

### **Planning Appendix B: Determined by Babergh District Council**

<b>Reference</b>	B/14/00082/FUL & B/14/00823/LBC
<b>Address</b>	134 High Street, Bildeston, IPSWICH, IP7 7ED
<b>Proposal</b>	Change of use from 2 self-contained residential flats to single dwelling house.
<b>Decision</b>	Granted



<b>Reference</b>	B/14/00297/FUL
<b>Address</b>	Tankard Farm, Wattisham Road, Bildeston, IPSWICH, IP7 7EG
<b>Proposal</b>	Erection of 9 single-storey dwellings (2 affordable) and construction of shared vehicular access (following demolition of existing buildings on site)
<b>Decision</b>	Granted

#### **C184/14/15 MATTERS TO BE BROUGHT TO THE ATTENTION OF THE COUNCIL**

Councillors Hubbard and Taylor had obtained a supply of grit for the new grit bin at the corner of Robin Road and Smock Meadow.

A local resident had identified that the public footpath leading from Brookfield near to the brook was overgrown. Councillor Taylor indicated that the landowner had been contacted and he intended to undertake the works early in 2015.

#### **C185/14/15 PUBLIC SESSION**

There were no matters raised.

#### **C186/14/15 CONFIDENTIAL BUSINESS**

There were no matters to be updated upon

The meeting closed at 9.10pm

Stowmarket
Conductor Leslie Olive

# Chorale



## Come and Sing the wonderful Rutter Requiem

28th February 2015

£15 (including buffet lunch!)

Hire of scores included  
All levels of experience welcome  
Registration from 9.30am; start at 10am  
Finish at 4pm

**Combs Middle School**  
**Lavenham Way, Stowmarket IP14 2BZ**  
Contact Sue Price for information and to book: 01787 210913  
[facebook.com/stowmarketchorale](https://www.facebook.com/stowmarketchorale)  
[www.stowmarketchorale.org.uk](http://www.stowmarketchorale.org.uk)  
Charity number 280488







D'ENZA



HAIR @ BEAUTY SALON  
AT

"KERSEY MILL"

*"February Offers"*

*"Valentine's Day 14<sup>th</sup> February!"*

1: Valentine's Special offer ~ Hot Stone Back, neck & shoulder massage

**Special Price of £20**

2: Valentine Luxury Special offer ~ Elemis Skin Specific Facial 1hr treatment with a Swedish back, neck & Shoulder massage 25mins.

**Special Price of only £40**

3: Hair~ Wash, Cut & Style **40% off** "Only for February"

**Special Price of only £15.90**

4: Men's Hair cuts only in February.

**Special Price of only £8**

The above offers can not be used with another offer.

Please find us on facebook: [denza.hairbeauty@facebook.com](mailto:denza.hairbeauty@facebook.com)

Please telephone for more information or make a booking on: **01473 829069**

Email: [info@denzahairandbeauty.com](mailto:info@denzahairandbeauty.com) or visit us on Facebook or Twitter for our special offers.

For opening times & brochure please look at our website: [www.denzahairandbeauty.com](http://www.denzahairandbeauty.com)



Kersey Mill, Kersey, Ipswich, Suffolk. IP7 6DP.

# BILDESTON VILLAGE SPRING CLEAN

The year is well underway, with January almost gone already. Have you stuck to those resolutions or are they already forgotten? As we look forward eagerly to Spring, why not resolve to help us with our

## **Annual Village Spring-clean.**

This is a great way to contribute to that precious rural environment that so many of us are keen to preserve and a way for newcomers to the village to get involved and meet some more locals!

As usual you can pre-book a particular area of the village that you would like to work on or just join in where needed. We hope to cover all the pavements and pathways within the Parish boundary and the roadways towards all our neighbouring villages. As you will appreciate this is a lot of work, so the more volunteers the easier it is for us.

Come along and do your bit!

Please phone us if you can, so we have an idea of numbers, or just turn up on the day.

**Saturday March 21st**  
**Meet at 10a.m. on the Market Square**  
**Bring your own gloves**  
**(bags and litter-pickers provided)**  
**Children welcome with adult supervision.**

Thanks,  
Jo Silburn 740504  
Robin Sidgwick 747404



## Pilates Classes Now Held at Kersey Mill

If you want to exercise both your body and mind as well as improving your sense of well being, strength, flexibility and mobility then I truly believe pilates is for you!

I am passionate about bringing the benefits of pilates to everyone and as a fully qualified teacher certified by Europe's largest professional pilates organisation I can help you improve muscle tone and core stability, building strength from the inside out, re-balancing the body and bringing it into correct alignment.

Please contact me if you wish to join a small matwork class and allow me and the Body Control Pilates method help you achieve your goals. Pilates can benefit anyone of any age and any level of fitness. I look forward to hearing from you.

**Call 07855 394 703 for more info.**

*Jenny  
x*



Body Control Pilates is a registered  
trademark used under licence

Pilates Works 4U, The Studio, The Old Guildhall, Church Lane, Hitcham, IP7 7NN  
[www.pilatesworks4u.com](http://www.pilatesworks4u.com) [pilatesworks4u@gmail.com](mailto:pilatesworks4u@gmail.com) 07855 394 703

# USING COPPICED MATERIAL AT ORCHARD BARN

**At Orchard Barn we use materials from the local area. All of our wood comes from our own site or, as in the picture, from local woods. Any regularly coppiced woodland will produce an indefinite supply of rods, poles and logs.**

**Coppicing involves cutting down hazel, ash, sweet chestnut, etc. and allowing it to regrow from the stump or stool. The regrowth can itself be harvested in 4 to 25 years depending on the size required.**

**Coppicing areas of a wood in rotation not only extends the life of the individual stools but greatly increases the biodiversity of the wood creating new glades where smaller plants, and hence animals, can thrive.**

**Coppiced hazel is used at Orchard Barn in a number of ways – it is the wattle onto which daub is smeared to create walls; several poles lashed together formed the ‘bender’ that helped keep the tool-shed dry while we worked on its roof where our own elm poles have become rafters; hand cleft coppiced Sweet Chestnut were used for battens in the main barn roof.**

**If you would like to learn more about coppiced materials then please get in touch -**

**[www.orchardbarn.org.uk](http://www.orchardbarn.org.uk) or call 01473-658193/07766-054042**



**ST MARY MAGDALENE CHURCH BILDESTON**  
**CHURCH SERVICES – FEBRUARY 2015**

<b>1<sup>st</sup> February Candlemas</b>	<b>11am</b>	<b>Benefice Communion Service for Candlemas at Nedging</b>
<b>8<sup>th</sup> February 2<sup>nd</sup> Sunday before Lent</b>	<b>11am</b>	<b>Morning Prayer</b>
<b>15<sup>th</sup> February Sunday next before Lent</b>	<b>11am</b>	<b>Parish Communion</b>
<b>18<sup>th</sup> February Ash Wednesday</b>	<b>9.30am</b>	<b>Benefice Service with the Imposition of Ashes at Whatfield</b>
<b>22<sup>nd</sup> February 1<sup>st</sup> Sunday of Lent</b>	<b>11am</b>	<b>Family Service</b>
<b>1<sup>st</sup> March 2<sup>nd</sup> Sunday of Lent</b>	<b>11am</b>	<b>Benefice Communion</b>

During the Interregnum all enquiries should be made to either the  
Rural Dean – Revd Martin Thrower (01473 822281) or the  
Churchwarden – Mrs R Cohen (01449 740530)

## Baptist Church, Duke Street, Bildeston

Jim Haley tel: 01449 740716 email: bildestonbc@gmail.com

**Service every Sunday morning at 10:45**

**Lunch Club: at 12:30 on the first Wednesday of each month –**

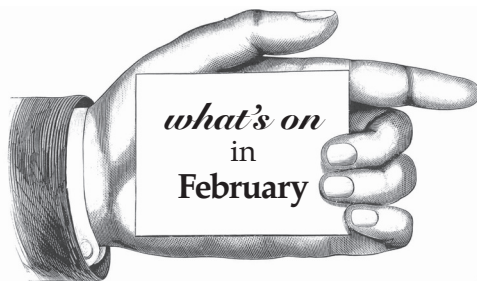
Anyone in the village is most welcome

**Community Coffee Centre: Every Friday from 09:15 to 11:30**

Enjoy meeting old and new friends at these events!

**‘Craft it Together’ - First Monday of each month at 7pm**

**‘Men’s Breakfast’ - last Saturday of each month at 8am**



### **Bildeston Community Coffee Centre**

Baptist Church 9:15-11:30 ..... **Every Friday**

### **Craft it Together**

Different Venues: please call 01449 740716 for details.....**1st Monday each month**

### **Strollers & Striders**

Baptist Church Car Park 10:00 ..... **Every Monday**

### **Baby & Toddler Group**

Baptist Church 9:15-11:30 ..... **Every Tuesday**

### **Winter Warmer 5 Bike Ride**

9.30am Market Square.....**Saturday 21st**

### **Chamberlin Hall**

CHAPS Pantomime 2.30pm/7.30pm.....**1st and 6th**

### **Men's Breakfast**

Baptist Church 8:00am ..... **Last Saturday of the Month**

*More details on events inside.*

**Please tell us about your events in March**

**email: [editor@bildestonbugle.co.uk](mailto:editor@bildestonbugle.co.uk)**



When you're finished with this Bugle please pass it on or recycle it.