

Bildeston Bugle

Issue number 268
FEBRUARY 2013

The Village Magazine
produced for the people of
Bildeston

Kindly sponsored by
Kris and Jan,
Please do read our
rhyme on page nine



BILDESTON BUGLE ADVERTISING AND FREE CONTRIBUTION INFORMATION

Our aim is to provide every resident in Bildeston with a newsletter which provides information of local interest *FREE OF CHARGE*. To that end we are required to be efficient in the space we use to print free notices.

We endeavour to include interesting tidbits, announcements for events open to the general public for free and items of a charitable nature free of charge. Ongoing free announcements need to be reduced to minimum size or make a contribution towards printing costs. Always check with us before submitting your advert and **ALWAYS** provide us with all of your contact details.

Sponsor an issue – £15 per issue

includes a brief message on the cover of the magazine

Advertising Rates

	1 issue	6 issues (15% disc)	12 issues (30% disc)	
1/4 page	£2.75	£14.00	£23.10	65mm W x 92mm H
1/2 page	£5.50	£28.05	£46.20	134mm W x 92mm H
full page	£11.00	£56.10	£92.40	134mm W x 190mm H

THE SMALL PRINT

Free contributions, adverts and payments are required by the 17th of the month for inclusion in the following month's issue.

Please make cheques payable to Bildeston Bugle and send to:

The Editor, Bildeston Bugle, 8 Manor Road, Bildeston, IP7 7BG

Receipts cannot be issued without your full postal address.

**If we do not receive payment by the 12th of the December
your advertisement will NOT be included**

The Bildeston Bugle Editorial Team are:

Daniel Newman (editor) – 8 Manor Rd, Bildeston IP7 7BG tel: 01449 741 541

Nancy Dales (treasurer) – 142 High St, Bildeston IP7 7EF tel: 01449 741 047

Alison Sims – 1 Squirrells Mill, Bildeston IP7 7DY tel: 01449 741 813

Tricia Baldwin – 13 Squirrells Mill, Bildeston IP7 7DY tel: 01449 741 227

Vic Ling – 5 Squirrells Mill, Bildeston IP7 7DY tel: 01449 744 574

BILDESTON KARATE CLUB

On the 2nd January 2013 Clive Pinnion started Bildeston Karate Club. The club will be meeting every wednesday between 7-8pm at Chamberlin Hall. The first night was very successful with 14 people taking part.

“I hope you agree that this club will be of great benefit to the local community especially the younger people. That’s why I called it Bildeston Karate Club so the fantastic community of Bildeston can feel ownership of their local club.” – Clive Pinnion

For more information about the club contact Clive 01206 860008

MYSTERIOUS MAYANS

Did the mysterious Mayans predict that the world would end on December 21st, 2012?

Well, no, not really, far greater minds than mine knew that this was a big oversimplification and that the Mayans are far more interesting than that. Their calendar was very cleverly worked out in the form of a series of cogs fitting into each other and geared up to get progressively larger until it would take millennia to move one tooth! That December date is just a bench mark for the end of one lengthy period before starting another.

However, nothing lasts forever, and the world, along with a couple of nearby planets will start to head for the exit sign when the Sun starts to run out of fuel. Carl Sagan said ; that about a million years from now, there will be one last perfect day before everything starts to run downhill. It will take a very long time for our star Sol to burn up it’s remaining gas and expand into a red giant, swallowing up Mercury, Venus and the Earth-Luna system around five billion A.D.

Plenty of time to put our house in order and colonise lots of scrumptious planets safely distant from the dying sun, using all the exciting inventions yet to come.

Brian (“Bib”) Edwards.

JOKE OF THE MONTH: HOW DO YOU FIX A BROKEN TUBA? WITH A TUBE-A GLUE!



Pilates Classes Now Held in Bildeston and Hadleigh

If you want to exercise both your body and mind as well as improving your sense of well being, strength, flexibility and mobility then I truly believe pilates is for you!

I am passionate about bringing the benefits of pilates to everyone and as a fully qualified teacher certified by Europe's largest professional pilates organisation I can help you improve muscle tone and core stability, building strength from the inside out, re-balancing the body and bringing it into correct alignment.

Please contact me if you wish to join a small matwork class and allow me and the Body Control Pilates method help you achieve your goals. Pilates can benefit anyone of any age and any level of fitness. I look forward to hearing from you.

Call 07855 394 703 for more info.

*Jenny
x*



Body Control Pilates is a registered
trademark used under licence

Pilates Works 4U, The Studio, The Old Guildhall, Church Lane, Hitcham, IP7 7NN
www.pilatesworks4u.com jenny@pilatesworks4u.com 07855 394 703

UNDER ITS SPELL

Just arrived home after attending the Bildeston Waytes and thought it best to write about it while I was still under its spell, yes, it was magic indeed!

I realise that you may be reading this in early February, when 12th Night is a fading memory, but it is still Winter, and carols are the essence of it. The lyrics and score seemed to sparkle with frost. Some of the harmonies have a barbaric sensitivity and when female voices soar up, it melts my boots. For some of the time, I sat with closed eyes, immersed and floating on the sounds. When the black bearded soloist came in with his richly trained voice, I seemed to feel weightless, lifted up.

Packed with mostly local people and enhanced with a vigorous orchestra, there was hardly a spare seat in the house. Such popularity is understandable, when an event like this can be such a stimulus and delight. The feeling of true community fills the air, as folk bustle back and forth to the bar in the intervals. Founded by Mr. Maurice Ratcliffe, his place in local history is assured, such service deserves a medal of some sort, I think.

Brian "Bib" Edwards Friday 21st December.



Hearing Problems?

Over 119,000 people in Suffolk alone have a hearing problem. The Hearing Care Centre is here to help. We are caring for all of your hearing needs locally at:

The Health Centre, Market Place, HADLEIGH

Hearing tests | Latest digital hearing aids | Outstanding aftercare service
Ear protection | Tinnitus management | Earwax removal | Home visits

To book your appointment call us on
Freephone 0800 096 2637



The Hearing Care Centre Ltd. 5 High Street, Ipswich, IP1 3JZ
To find our more visit: www.hearingcarecentre.co.uk

Karen Finch
RHAD FSHAA FRSA



Bildeston
Ladies Club

Next meeting on Feb
at 19:00 for

Join us for

CANCELLED

See you in March

the village it is a great
people and make friends.

one has questions about the club please contact:

Ann Shirley - Chairperson - 01449 740114

g Ruffell - Vice Chairperson - 01449 740841 Jean Radley - Treasurer - 01449 743650

BILDESTON COMMUNITY CYCLING

WINTER WARMER 6

JOIN US FOR A RIDE OF ABOUT 25 MILES,
STARTING FROM THE MARKET PLACE
AT 9.30am, ON SATURDAY 9 FEBRUARY.
CAFE STOP HALFWAY. BACK ABOUT 12.30pm.

●
PUT IT IN THE DIARY NOW!
●

Warm clothing recommended. The ride will be mainly on quiet lanes,
at an acceptable speed (no-one left behind!). Regret no
unaccompanied children under 16.

JUST TURN UP; or for more information, contact Robin Weaver 741048

News From Bildeston Primary School

The children and staff at Bildeston Primary School would like to wish all Bugle readers a very happy new year.

We had a very busy end of term at the end of last year. We performed our Christmas carol service, which this time unusually featured a giant Christingle! We are very pleased to have raised £85.51 for the Air Ambulance Service through collections made at the service.



Looking ahead at this term, the children have already got into the swing of things starting our new topic for this term- 'Inspirational People'. We will be studying lots of interesting and talented people over the next few weeks, both modern and historic, including some of our wonderful athletes who competed in the 2012 Olympic Games.

We'll also be keeping ourselves occupied outside of the classroom at playtime and after school, having a whole host of clubs to choose from. These include Gardening Club, Art, Creative Writing, Speed Stackers, Choir, Jogging Club and football, amongst others. What a lot to pack into a short term!

SUFFOLK MOBILE LIBRARY COMES TO BILDESTON ONCE EVERY 4 WEEKS

20th February	15th May	2.10 - 2.25pm Brooksfield
20th March	12th June	2.30 - 2.45pm Market Square
17th April	10th July	2.50 - 3.05pm Newberry Road
		3.10 - 4.00pm Paddock Way (This is a community stop)

HONEY BEE'S NURSERY

Hitcham Village Hall, Hitcham, IP77NE

FOR CHILDREN AGED 2 – 5 YEARS

OPEN Mon, Wed, Fri 9.15a.m. – 12.15p.m. or 3.15p.m.

Tues, Thurs 9.15a.m. – 12.15p.m. or 1.15p.m.

Fee's @ 2.50 per hour (£15.00 for long day)

2 indoor Rooms and Outdoors Areas

Ofsted Registered

Early Years Funding accepted for all 3 & 4 year olds

2 year old funding may also be available

Contact: Sharon Scarfe 01449 740764 (hall) 01449 740851 (home)

Do you know someone who needs care?

Our Bildeston team offers specialist live in care.

Working with people of all ages, our live in carers provide one-to-one support, balancing independent living with bespoke care needs.

We can assist with:

- personal care
- companionship
- housekeeping



Find out how we can help you,
please call 0808 180 1027
or visit www.helpinghands.co.uk




Helping Hands

Established since 1989

COUNTRY HEDGE AND GARDEN CARE

HEDGE TRIMMING, PLANTING AND LAYING
COPPICE WORK AND FRUIT TREE PRUNING
GARDEN MAINTENANCE



CONTACT:

OWEN WILLIAMS

suffolkowen@gmail.com

01449 737 983 OR 07745 799 798

EXPERIENCED, LICENSED AND INSURED CHAINSAW OPERATOR

A Year

by

**Kris
& Jan**

A year has passed we'd like to say,
We've loved village Bildeston in a special way,
The village, the people, Bank House Store, Kings Head too,
Have made it so special, trust us they all do.

Street clean, B-Natural, Jubilee, beer fest too,
Just a few of the venues where we've met some of you,
And as we meet others along the way,
We'll stop and say "Hi" and not walk away.

So as a small gesture in the Bugle we write,
To say a big thank you to all, yes that's right!
As we have been welcomed by all whom we've met,
And living in Bildeston, is no regret.

THANK YOU FROM KRIS, JAN AND ROSIE THE DOG TOO

Reader's Letter: Water, water everywhere...

Dear Editor,

Through your pages I would like to convey my admiration to Anglian Water contractors, May Guernsey, for their dogged determination to fix the water leak in the Market Square on Friday 18 January. They worked all day and well into the night in below zero temperatures to complete the task.

Our new parish clerk, Mr David Blackburn, must also be thanked for liaising between Anglian Water, County Council Highways and the Police to secure the free and safe flow of traffic throughout the operation.

Well done all.

Valerie Allard.

It might be pointed out that, had Anglian Water dealt with the leak when they were first notified of it in August/September, the job could have been done in more clement weather.

**After the January blues enjoy a fun filled
February at the**

Red Lion



Saturday 2nd February

Join us for live music by **Words and Music**

Tuesday 5th February

Say it with jewellery and join us at our 'Valentine Jewellery Sale' with Bespoke Jewellery

Saturday 9th February

We are hosting our Darts Tournament with cash prize

Saturday 16th February

Back by popular demand.....John's disco and Karaoke

For further details please call in and see us or call us on
01449 740476

FROZEN FIELDS AND WHISKEY MAC

Whoosh!

What was that?

It was the sound of an overshot deadline, folks!

Yep, I missed the one for the January issue, but hey, I should be nice and early for the Feb ish!

February-to quote Gilbert and Sullivan :

“ IN A BEASTLY MONTH LIKE FEBRUARY, 28 DAYS IS PLENTY...”

Certainly true of those we had in the ‘90’s, when I was working at Old Buckenham School as its part-time art master. What snow we had then and rutted ice on the Brettenham Road, along which I used to commute the four miles on my bike. On one Arctic day, the schoolboys filled the school grounds with snow sculptures, including arches strong enough to stand on and even a few igloo-like huts! When it was time for the school play, I was employed to paint the scenery. Being something of a slow coach, it used to keep me busy after school hours well into the night. Cycling home on a clear and frosty night, along a road lit only by the moon and stars, wheels silent on the hard- packed snow, I would hear the tiny movements of small wild- life in the hedgerows.

I would also be aware of the threat to those small creatures in the form of a breeding pair of hunting owls, calling out to each other, as they soared over the frozen fields, scanning for rodents. “ Hoo-hoo! “would go the male and “Screeescree!”replied the female. Some nights, the male would get curious about this strange lone human on his machine with the dim lamps fore and aft, and flap worryingly low above my head. I was inescapably reminded of the monstrous owl in “The Rats of Nimh” ,

The animated film of which I had seen with my two small sons during the far-off Summer Hols.

However, much to my relief, Mr. Barn soon lost interest and flew away to resume the hunt, leaving me free to ride on to the half-way stage at Hitcham White Horse, where I took on some high octane fuel (whiskey mac) for the final two miles.

Brian “Bib” Edwards.

Bildeston School PFTA invite you to their



QUIZ NIGHT
Saturday 16th March 2013

7.30pm in the School Hall

Teams with a maximum of 6 people.

Ticket Prices per person: ***Quiz & Fish & Chip Supper: £8.50***
Quiz Only (No fish n Chips): £3.50

Bring your own drink

Raffle

****Closing date for entries is strictly Friday 8th March. We will not be able to accept fish and chip orders after this date.****

All entries to Bildeston School Office please, or phone Sally Hayes on 01449 743682.

Tickets are limited so please book early!

All proceeds from the quiz will go to the school playground equipment project

100 OR 200 OR 300 litres

Quality Heating Oil

Tight budget?

(Order with a neighbour to enjoy a discount)

Regular smaller deliveries?

Are you renting or moving ?

(Take your oil with you!)

Run out & need a boiler restart ?

Difficult delivery – need extra care ?

(Larger bespoke deliveries available by arrangement)

**Serving villages around SUDBURY,
HADLEIGH & IPSWICH**

Badger Fuels Ltd

www.badgerfuels.com



**Smaller
Delivery**

**Extra
Care**

**Quick
Response**

0758 269 1111

Debit card or Cash on delivery or Credit card (+2%)

SORRY – NO CREDIT

Badger Fuels Ltd – Your SMALL delivery specialist!

Ashley Hubbard Driving Tuition



Patient, experienced, fully qualified ADI DSA Driving Instructor.

Learner – Advanced – Refresher

Theory Test & Pass Plus Tuition

Competitive rates, door to door service in

Bildeston, Hadleigh, Stowmarket, Needham & Ipswich areas.

T: 01449 740633 or M: 07901 563281

E: ashley.hubbard@btinternet.com

Angel Delights

**Outside Caterer &
Specialised Confectioner**

Weddings – Christenings – Funerals

Birthday Parties - Dinner Parties

Barbecues

**CAKES FOR ALL
OCCASIONS**

Contact Helen

01473 82857 or 07900 900329

info@angel-delights.com

www.angel-delights.com

SEASONED LOGS

Various load sizes
from £80 delivered

All wood locally sourced
from responsibly
managed woodland

Chestnut posts available

01787 211839
or 07884457233



KINGS HEAD

& Brewery

Nigel, Susie, Ryan and Freya look forward to welcoming you to the Bildeston Kings Head (www.bildestonkingshead.co.uk)

- Here's our **free live music** for **February**: every **Wednesday** is **Open Mic Night** from **8:30pm**; from **9pm on Saturday 23rd** the superb **Graham Welham** will be playing live; and from **1pm on Sunday 24th** we have **Kevin Nightingale's** contemporary classical solo acoustic guitar.
- Our monthly **charity quiz night** is on **Thursday 28th Feb** at 8:30pm. To book a table telephone Sue or Nigel on 01449 741 434. Thanks to Decembers teams who raised **£250 for Macmillan Cancer Support**.
- Our good value homemade food uses quality ingredients that are locally sourced where possible. We are well known for tasty beer-battered fish & chips, delicious boozy beef pie (red poll beef supplied by Brook Farm, Brent Eleigh) and our freshly prepared traditional Sunday roasts. Meals are cooked to order and available to eat-in or take-away. To reserve a table please phone **Sue or Nigel on 01449 741434**.
- We brew our own real ales on-site (tours by arrangement) with at least one other from a local independent brewer.
- Our opening times are as follows:

Wednesday	Open 6pm-12am (open mic/buskin night)
Thursday	Open 6pm-11pm (bar games night)
Friday	Open 4pm-12am (full menu 6-9pm)
Saturday	Open 12pm-12am (full menu 12-2pm & 6-9pm)
Sunday	Open 12pm-10:30pm (roast & full menu 12-3pm)
Monday/Tuesday	Closed (except bank holidays)

February at Brook Farm Studio

Children's Club

Sat 2nd Feb 10.30am-12.30pm £5

Creative Embroidery

Sat 9th Feb 10am-1pm £20

Pottery

Sat 9th Feb 2pm-4.30pm £18/£20

Figurative Drawing

Sat 16th Feb 10am-1pm

Every Wednesday Craft & Natter 10am-12.30pm £5

Every Thursday Felt Making 10am-12.30pm £8

Every Friday Painting 10am-12.30pm £8

Further Details on website www.brookfarmstudio.co.uk or email brookfarmstudio@gmail.com

Tel Hazel on 07432138966 or 01473 823819

Baby, Toddler & Nearly New Sale



Chamberlin Hall, Bildeston

£10 a Table

2nd March 2013

10am – 4pm

Refreshments Available

For more information contact

June on 01449 740995 or Lyn on 01449 741253

CLEANER REQUIRED FOR BILDESTON BAPTIST CHURCH

3 hours per week
on a Friday afternoon
at £7.50 per hour.

A hard working, reliable,
trustworthy person is required to
clean the Church on a weekly basis.

Apply, in first instance, to Jim Haley
at bildestonbc@gmail.com

or in writing to the
Church premises in Duke Street

Bildeston Health Centre Patients

Your views are important!

A group of volunteer patients from Bildeston Health Centre (the Patient Participation Group) are working with the staff at the centre and organising a survey to get further patient views on the services the health centre provides. The survey will take place throughout February 2013.

Access the survey by going online at www.bildestonhealthcentre.co.uk and follow the link to the survey. Results from the previous survey can be seen here too. This is the preferred way for patients to take part.

Alternatively survey forms can be picked up and returned to the surgery.

Help will be available to those unable to get to the surgery and who want to take part.

If you need more information or help just ring June Carpenter on **01449 741318** or email junecarpenter@btinternet.com



Craft it Together

Every Monday evening

7pm

at

Bildeston Baptist Church

Bring along your craft activities and join us for an informal relaxed evening of crafting together – share ideas, gain new skills, or just enjoy doing your own thing.

Cost £1.50 – drinks provided

Contact Elaine on 01449 740716 for information

BASE GARAGE LTD

MONDAY – FRIDAY 7.30 – 6.00

SATURDAY 8.00 – 12.00

- TYRES
- EXHAUSTS
- PUNCTURES
- BATTERIES
- WHEELBALANCING
- AIR CONDITIONING
- LATEST DIAGNOSTIC EQUIPMENT
- WELDING TO MOT STANDARD
- SERVICING & ALL REPAIRS TO ALL MAKES OF CARS
& LIGHT VANS FLEET DRIVERS WELCOME
- MOT CLASS 4, 5 & 7
- COURTESY CAR AVAILABLE
- COLLECTION & DELIVERY SERVICE 5 MILES RADIUS
OF GREAT BRICETT
- WINTER CHECKS
- HOLIDAY CHECKS

£10 OFF!

*YOUR MOT WITH THIS
ADVERT*

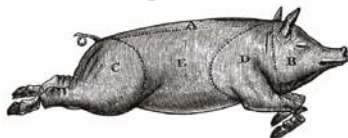
LOWER FARM ROAD, GT BRICETT, IPSWICH IP7 7DR

01473 658987 / 01473 657704

FAMILY GROCER PROVISIONS OFF LICENCE

BANK HOUSE STORES

Richard & Joan
O'Sullivan



telephone
01449 740403

WE'RE HERE WHEN YOU NEED US

Where can you get cash or a Lottery ticket up to 7 o'clock on Saturday evening? Where can you post that parcel on a Sunday morning (to save you queuing for half an hour in town on Monday)? Where do you get fresh food when the roads are too dangerous to risk driving? Don't just wait for the snow for a reason to visit Bank House Stores. We're open for over 76 hours every week and we're on your doorstep, saving you the time and cost of travelling.

And you can save even more money with our special offers which are available from 20th January until 9th February, including:

Robinson's Cordials 1 litre.....	ONLY £1.00
SuperValu Thick Bleach 750ml.....	ONLY 50p
SuperValu Washing Up Liquid 500ml	ONLY 50p
SuperValu Sweetcorn 326g.....	ONLY 50p
Isla Negra Chilean Wines	ONLY £5.00
Hardy's Crest Australian Wines HALF PRICE	ONLY £5.45
Kumala Zenith S. African Wines HALF PRICE	ONLY £4.99

.....and just in time for Valentines Day

Martini Prosecco	ONLY £7.00
Thornton's Premium Collection HALF PRICE	ONLY £6.49
Lindt Lindor Chocolates 200g.....	ONLY £3.00

.....plus many, many more. Come in and pick up a leaflet.

We are open from 7am to 7pm (6.30 for the Post Office) Monday to Saturday and 8.00 to 12.00 every Sunday and Bank Holidays.

Shop Locally – You Need A Jolly Good Reason Not To!

WALL TO WALL BUILDERS

Experienced, Professional & Reliable

- Extensions
- New Builds
- Listed Buildings
- Loft Conversions
- Kitchens & Bathrooms
- All Renovation Work & Repairs

Richard Bateson

M: 07799 114814

T: 01449 741510

richard@bateson1.eclipse.co.uk

www.walltowallbuilders.co.uk

Hadleigh
POOL & LEISURE

Group Fitness

Pilates



Pilates is a non-impact form of exercise based on a set of exercises that are designed to improve flexibility and strength for the overall body.

Pilates focuses on awareness of the spine, posture, breathing and flexibility.

Whether you are a beginner or have taken part in Pilates before, our small group classes are ideal for you giving you the support & attention you need.

Courses taking place at Hadleigh Pool & Leisure, Stonehouse Road, Hadleigh, IP7 5BH on Wednesdays & Fridays.

To join the next course call 01473823470 to book your place

SSL
SouthSuffolkLeisure




...leading the way to active living.



Dawn, Nigel & Tracey
from

Bespoke Jewellery
Designs

Invites you to
The Red Lion
Bildeston



VALENTINE JEWELLERY SALE

All hand crafted designs.

Necklace's

Bracelets

Rings

Earrings

Watches

Scarves

*All made with great love &
care.*

Come on guy's, say it with
jewellery this year. Last's
longer than flowers, your
valentine will love it.

Enjoy a few beer's whilst choosing
that perfect gift.

Tuesday 5th February
6:00 p.m. to 9:00 p.m
call Tracey 07415 126 339

Or ask Dawn or Nigel



'A PINK RIBBON'



CHARITY DANCE

(in aid of breast cancer)

At CHAMBERLIN HALL

BILDESTON

On Saturday 16th February 2013

7.30pm to 11.45pm

Featuring

John Lloyd - Tribute to swing

and

Dancing to the sounds of

"Annie"

Plus

Grand Draw

Please support this worthwhile charity

Tickets £15 including food

For further details, tickets, donations or sponsorship

Please contact Adrian & Lyn Chinery

(01449)741253

TIM'S TITTLE TATTLE

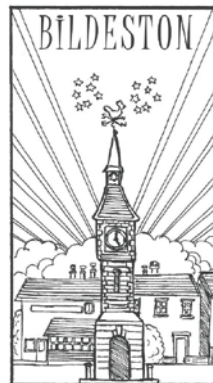
I apologise for the absence of the Tittle-Tattle last month; I forgot that Christmas was so near that the deadline had been moved forward and, therefore, missed it. Not that that was the only thing to cause a major fit of depression. Did you watch much television over Christmas ? Good Grief! The cult hero Derek was summarily dispatched with a heart attack in Eastenders followed by a botched job on a boiler in Coronation Street which very nearly finished off the householder thanks to carbon monoxide poisoning. Emmerdale was full of gloom and doom and, please tell me, why do these soap characters have to be so thoroughly unpleasant to one another?

Commercial television became quite a trial; unpleasant characters apart, did you notice all those advertisements for various charities? Of course you did – you couldn't miss them! This was the season of peace and goodwill and we all know that we should be dipping deep into our wallets to give whatever we can afford to charity: however, over Christmas we were fed a non-stop diet of truly heartbreaking images of orphaned Burmese children (were they really in cages or did I imagine that?) of African babies dying of starvation and dirty water, of maltreated tigers, donkeys and horses and, worst of all, abused children right here in the UK. I am only too well aware that charities are desperate for our contributions but I really think the horrors went too far this year – make it bad enough and we are all tempted to pull the cushions over our heads (like we did as children rather than face the Daleks on Dr. Who!) and blot out the images which have burnt themselves into our eyeballs rather than signing up for £3 a month. No matter how generous we would all wish to be I would venture to suggest that it would be easier to clear the national debt than to contribute to all these charities. The exception to the above was, of course, the adverts run by the Salvation Army showing homeless people being given a well-deserved Christmas dinner which rather made me wish I was there to help dish up.

We probably deserve cheering up a bit with the advent of freezing temperatures and snow and I am led to believe that the Parish Council are on the case; apparently, in their wisdom, they will not attempt to impose a 20mph speed limit in the High Street. They have, I am told, come up with a typically English compromise of white lines at each end of the High Street and a flashing light. I said two years ago that it would all end in tears – I might have got the End of the World wrong but I was right with this one. This is a sensible solution which will save £thousands and will also save me having to suggest that the money spent on unnecessary road restrictions would be better sent to Burma to get those poor kids out of those cages.

BILDESTON PARISH COUNCIL

**DRAFT Minutes of the meeting of Bildeston Parish Council
held on 14th January 2013 in Chamberlin Hall at 7.30 pm**



In attendance:

Councillors:

**J Cartwright (Chair), P Cousins, D Dempsey, D Drury,
A Guttridge, R Lindsay, R Lester, R Taylor, N Tye**

Also Present:

Councillor D Keane (Babergh District Council)

Councillor J Pembroke (Suffolk County Council)

D Blackburn (Clerk)

The Chairman opened the meeting and welcomed everyone present.

C14612/13 APOLOGIES FOR ABSENCE

There were none.

C147/12/13 DECLARATIONS OF PECUNIARY AND NON-PECUNIARY INTERESTS

Cllr Guttridge declared a non-pecuniary interest as an officer of Suffolk County Council.

C148/12/13 DISPENSATIONS IN RESPECT OF PECUNIARY INTERESTS

There were none requested.

C149/12/13 MINUTES OF PREVIOUS MEETING

The minutes of the meeting held on 10th December, 2012 were proposed by Cllr Tye, seconded by Cllr Taylor and signed by the Chairman as a correct record.

C150/12/13 POLICE REPORT

There had been 2 reports of criminal damage, a theft of a scooter and thefts from 4 motor vehicles during the period 10th December, 2012 and 13th January, 2013. Members of the Council felt that parishioners should be made aware that catalytic converters had been stolen from 2 vehicles on Brookfield and 1 vehicle on High Street via "The Bugle".

C151/12/13 BABERGH DISTRICT COUNCIL

Councillor Keane reported that Louise Rawsthorne of the District Council would attend a future meeting of the Parish Council to present an item on Community Engagement as

it has been unsafe for her to travel that evening because of the poor weather conditions. The reorganisations of Mid Suffolk and Babergh District Councils would deliver savings in response to reductions in government funding. It was noted that Morrisons had opened a store in Hadleigh that day and had obtained planning permission because there had been an existing building on the site. The application by Tesco's was different because it would constitute a new business on its proposed site. In response to a question, Councillor Keane undertook to investigate the weight that would be attached to a petition opposing the store as it had been suggested to a Member of the Parish Council that it was not in the required format.

C152/12/13 SUFFOLK COUNTY COUNCIL

Councillor Pembroke reported details of the launch of the Oyster Card which would assist young people in travelling around the County. Savings required by the County Council were greater than anticipated in the current and next financial years. However, subject to approval by the full Council, the County Council's element of the council tax would not be increased in 2013/14.

C153/12/13 BILDESTON SKATE PARK PROJECT

The Committee considered the draft tender documentation and funding arrangements for the project. The best solution would be sought which was affordable within the funding that had been secured from various sources. The important role of the Bildeston Skate Park Facility Working Group in developing the project was recognised by Members of the Council and there would continue to be close liaison with the Group. The Chairman referred to an approach that she had received from residents about anti-social behaviour and littering that was taking place at the playground. Measures for addressing the existing problems were discussed. Looking forward, it was identified that generally, the siting of skate parks on play grounds resulted in a reduction in anti-social behaviour as it provided a positive outlet for activity by young people.

It was **AGREED**:

- a. That the tender documentation be approved subject to amendment of the completion date for the project;
- b. That in accordance with the Council's Financial Regulations, tenders be sought for the design and build of a skate park;
- c. That the Clerk be authorised in consultation with Councillor Guttridge, to invite specialist suppliers of Skate Parks to tender for the project;
- d. That the Chairman and Clerk be appointed to receive and open tenders for the project;
- e. That a Panel be appointed to evaluate the tenders comprising the Chairman and Councillors Guttridge and Lester;
- f. That a tender assessment report be presented to Council; and
- g. That steps be taken to reduce the existing problem of anti-social behaviour at the playground including a chain and padlock for the gate to restrict access.

C154/12/13 TRAFFIC CALMING MEASURES

The Council considered the merits of introducing gateway treatments at the main entrances to the village based upon the drawings and quotations supplied by the County Council. The affordability of the scheme was also discussed in the context of potential financial support from the Locality Budget of County Councillor Pembroke.

It was **AGREED**:

- a. In principle, that full gateway solutions be undertaken at the northern, eastern and southern entrances of the village; and
- b. That the offer made by the County Councillor Pembroke to provide significant financial support to the Gateway project and procurement of a Speed Indicator Device be welcomed and funding of up to £4,000 be committed by the Parish Council towards the overall costs.

C155/12/13 FORWARD PLANNING OF BUDGET AND PRECEPT

The Clerk reported details of the grant support that would be provided by the District Council in 2013/14 to compensate for the reduction in the tax base in Bildeston. It was recognised that whilst full compensatory grant support would be available in 2013/14, this was unlikely to be repeated in future years. The position regarding the capping of increases in the Parish precept remained unclear and would be reviewed by the Secretary of State later in the year. Members of the Parish Council discussed the implications for the Parish and it was felt that the Precept for 2013/14 should be determined having regard to the Council's projected medium term financial requirements.

It was **AGREED**: That the Clerk, supported by Councillor Lester, develop budget proposals for the next meeting.

C156/12/13 AUTHORISATION OF PAYMENTS AND QUARTERLY REPORT

The Clerk presented details of recent payments and a receipt. The Council also received the quarterly financial report for the 3rd quarter of the financial year. The Clerk identified that there were no exceptional items that required consideration in terms of their impact on the Council's budgetary position.

It was **AGREED**:

That the following payments be made:

Payee and Service	Cheque Number	Amount
Eastern Facilities Management Coronation Playground Qtrs 1, 2 & 3	101429	£2,684.27
Eastern Facilities Management Bildeston Grove Qtrs 1, 2 & 3	101430	£1,501.38
Eastern Facilities Management Kings Pightle Conservation Area 5 Cuts	101431	£844.04
BDO Audit Fees 2011 / 2012	101432	£342.00
JK & GA Agnew Woods A/C 20ft Christmas Tree	101433	£330.00
Robin Taylor Christmas Celebration Expenses	101434	£67.05
David Blackburn Clerk's Salary	101435	£181.31

That the following receipt be noted:

Payee and Service	Amount
Hunnaball Family Funeral Group Ltd. Burial of Cremated Remains	£60.00

That the quarterly report for the period 1st October to 31st December, 2012 be received and noted.

C157/12/13 SPEEDWATCH UPDATE

Councillor Tye had held positive discussions about the deployment of a mobile VAS unit in Bildeston to support Community Speedwatch. Requirements regarding Speedwatch operations had been reviewed by the Police and had now reverted back to a minimum of 2 people although Councillor Tye would endeavour to have 3 people working at the same time if possible.

It was **AGREED**: That the update be welcomed.

C158/12/13 MATTERS CONSIDERED AT A PREVIOUS MEETING

Further to Minute No. 145/12/13, the Clerk provided the following update:

- The need for sweeping outside the Surgery had been reported to the District Council for action;
- Further liaison was required regarding the overhanging hedge on Wattisham Road; and
- A bouquet had been presented to Mrs Sybil Raynham to mark her 100th birthday which was paid for personally by Members of the Parish Council rather than from Parish funds.

It was **AGREED**: That the actions be noted.

C159/12/13 NOTIFICATIONS RECEIVED BY THE CLERK

The Council received the Clerk's report.

It was **AGREED**:

- That a post mounted bin be ordered from Babergh District Council and located immediately outside the Coronation Playground with the costs of provision and emptying to be met by the Parish Council;
- That the schedule of grit bins and heaps around the village be noted and the County Council be requested to replenish the heap half way up Church Hill; and
- That the submission of an application to open an account with Unity Trust Bank to access online banking facilities be noted and that the Clerk examines other savings accounts that might provide higher interest rates to operate alongside the current account with the Unity Trust Bank.

C160/12/13 PLANNING MATTERS

Planning Appendix A: Planning Applications Consultation

Application Number:	B/12/01482/FUL
Location:	Tankard Farm, Wattisham Road, Bildeston IP7 7EG
Proposal:	Erection of 6 dwellings (following demolition of existing dwelling)

Decision	Objection on the grounds of the visual intrusion of the proposed 2 storey building on Plot 1 and the need for a balanced housing provision with more affordable housing on the site.
----------	---

Planning Appendix B: Decided by Babergh District Council

There were none.

C161/12/13 MATTERS TO BE BROUGHT TO THE ATTENTION OF THE COUNCIL

- Councillor Guttridge referred to a report of mud on the corner of Newberry Road allegedly caused by dustbin lorries avoiding parked vehicles. The matter would be referred to County Highways.
- Councillor Dempsey reported that a light was not working in the clock tower. Councillor Taylor undertook to report it.
- Waste bins on Church Lane had not been emptied recently and this would be reported to the District Council by the Clerk.
- Councillor Tye reported that the next Safer Neighbourhoods Team Priority Setting meeting would be held at Bildeston on Tuesday, 22nd January, 2013 from 6,00pm to 7.00pm and was open to the public.
- The Chairman referred to anti-social behaviour that had been occurring near to a public house which she would seek to raise with the landlord with a view to seeking a solution.

C162/12/13 EXCLUSION OF THE PUBLIC

It was **AGREED**: That by virtue of the provision of section 1(2) of the Public Bodies (Admissions to Meetings) Act 1960, the public be excluded from the remainder of the meeting on the grounds that publicity would be prejudicial to the public interest because of the confidential nature of the business to be transacted.

C163/12/13 CHAIR'S REPORT

The Chairman reported on legal advice that was being sought in respect of the circumstances of a former parishioner.

It was **AGREED**:

- a. That in accordance with the advice obtained, a Committee of the Council be formed with delegated authority:
 - i. to deal with all aspects of this matter on behalf of the Council;
 - ii. to make decisions and take actions on behalf of the Council; and
 - iii. to incur all necessary expenditure on behalf of the Council.
- b. That the Chairman and Councillors Cousins, Dempsey and Tye be appointed to serve on the Committee.

The meeting closed at 9.50pm

Notice is given that the next meeting of the Parish Council is scheduled to be held in Chamberlin Hall on Monday, 11th February, 2013 at 7.30pm

BILDESTON BOWLS CLUB

PRESENTS

A

NIGHT AT THE RACES



ON SATURDAY 23rd FEBRUARY 2013
At CHAMBERLIN HALL, BILDESTON

**COME AND EXPERIENCE THE THRILL OF 7 ACTION
PACKED RACES (INCLUDING AUCTION RACE) ON
THE BIG SCREEN**

TURNSTILES OPEN AT 7.30PM
WITH THE FIRST RACE AT 8.00PM

TICKETS £8.00
(INCLUDING FOOD)

RACE SPONSORSHIP AVAILABLE AT £25 and HORSES £4

FOR TICKETS AND SPONSORSHIP CONTACT
ADRIAN ON (01449) 741253 OR DAVID ON (01449) 674661

MANNING & WOODS LTD.

22 Stowmarket Road, Old Newton, Stowmarket, IP14 4EE



BUILDING CONTRACTORS
PROPERTY MAINTENANCE
SPECIALIST DECORATORS



Tel. 01449 673315

Email info@manningandwoods.co.uk

Website www.manningandwoods.co.uk

Manning & Woods Ltd. is formed by the merger of Mannings Ltd.
and Simon Woods Property Maintenance

BARGEWELL SKIP HIRE

2, 3, 4, 5, 6, 7 & 8 yard skips

Long or short term hire

Delivery service 7 days a week

Fast friendly service

Stowmarket 01449 615056

Mobile: 07770 452378

High Rd, Gt Finborough, Suffolk

www.bargewellskiphire.com

Credit cards accepted

RYLENES CATTERY

Wallow Lane • Naughton • Nr. Hadleigh • Suffolk • IP7 7BZ

3 miles from Bildeston

*5 Star Luxury Boarding in a rural countryside location
where each cat is an individual*

**OPEN
ALL
YEAR**

- ☺ **R** Reliable, experienced, friendly owners
- ☺ **Y** Young/old felines boarded
- ☺ **L** Long/short stays
- ☺ **E** Extra attention re: medical/dietary needs
- ☺ **N** Night/Day vet on call
- ☺ **E** Essential vaccinations
- ☺ **S** Single/family heated & insulated chalets



LOTS OF CUDDLES & TLC

Telephone: 01473 658747 • E-mail: rylenes@btinternet.com

www.rylenescattery.co.uk

Walnut Tree Designs

BESPOKE CURTAINS & BLINDS

Free design consultation in your own home

Complete made-to-measure service for all your soft furnishing requirements

.....

UPHOLSTERY – PELMETS – HEADBOARDS – VALANCES

CUSHIONS – FABRICS – TRIMS – POLES

VENETIAN BLINDS

.....

Do call Viki Angela or Terri Oxley to arrange a free consultation

Tel: 01449 736807 / 01284 828263 M: 078269 30011

email: walnuttreedesigns@yahoo.com

Cockerells Hall, Buxhall, IP14 3DR

COUSINS & SON BILDESTON LTD

available to carry out all your building requirements

from

Renovations / Alterations / Extensions

to

General Repairs

Please contact Paul for a free estimate

01449 744360 or 07876 244461

or email paul.cousins268@btinternet.com

HATTERS CHIMNEY SWEEPS UK

WWW.CHIMNEY-SWEEP.ORG.UK

CHIMNEY & FLUE SWEEPING

FROM £45 INTRODUCE

A FRIEND AND EARN A

£10 DISCOUNT STOVE

MAINTENANCE

CHIMNEY REPAIRS

CCTV FLUE INSPECTION

01787 281979



The Harmany Roadshow

Mobile Disco

Music For All Occasions

Call Now For A Quote

Chris

01449 740020 or 07979 385622

Leigh

07876 355412

The_Harmany_Roadshow@hotmail.co.uk



Recipe of the Month



MOROCCAN-STYLE CHICKEN CASSEROLE

Ingredients

For the spice paste

2-3 large, garlic cloves, peeled,
roughly chopped
pinch salt flakes
2-3 good pinches smoked paprika
2-3 good pinches ground turmeric
1 tsp cumin seeds
glug olive oil

For the casserole

6 large chicken thighs, bone in
and skin on
good glug olive oil
2 onions, peeled, roughly chopped
1 lemon, cut in half, thinly sliced
pinch saffron strands
handful green olives, pits removed
small handful fresh coriander,
roughly chopped

Method

For the spice paste, crush the garlic cloves and salt with a pestle in a mortar. Add the smoked paprika, turmeric and cumin seeds and grind to a paste. Add just enough olive oil to make the paste runny enough to pour, but thick enough to coat the chicken.

For the casserole, place the chicken thighs into a bowl, pour the spice paste over them and toss well to coat all of the meat. Cover with cling film and leave to marinate in the fridge for as long as time allows, overnight if possible.

Heat the olive oil in a large shallow pan, then cook the onions until softened. Add the chicken thighs and cook until coloured lightly on both sides. Add the lemon slices and pour in enough water to come halfway up the chicken pieces. Stir in the saffron, then season well, cover with a lid and simmer for about 25 minutes, until the chicken is cooked through and tender. Add the olives and fresh coriander and serve.

Lindsey Painting & Decorating Services

Professional & reliable interior and exterior home decor. Paint, Wallpaper Coving etc. Plus other allied services, Woodwork, tiling, laminate flooring. Curtain hanging, tracks/pelmets fitted.

Terry Peters

Home 01449 741483

Mob 07809 571790

Email tac59@talktalk.net



Beat rising fuel bills
Stop energy loss
Use 'Green Deal' money



'Green Deal' is a government incentive to fund home energy efficiency with no up front cost to you.

Solar investments still return over 10%

30% price drop on our Solar Panels.

Talk to us! We are local certified Solar Energy Specialists eager to give you **free** advice and survey.

Call Now: **01284 706 586**
or visit **www.ambervert.eu**

CHIMNEY SWEEP

ECO SWEEP

CHIMNEY SERVICES

- NEW POWER SWEEPING METHOD USED FOR A MORE THOROUGH CHIMNEY CLEAN THAN BRUSHES.
- INDUSTRIAL HEPA FILTERED VACUUM.
- FULLY INSURED.
- INSURANCE RECOGNIZED CERTIFICATES ISSUED.
- SPOTLESS, RELIABLE AND FRIENDLY SERVICE.
- ALL CHIMNEYS, WOOD BURNERS, AGA, BOILER FLUES SWEPT.
- GUILD OF MASTER SWEEPS CERTIFICATED MEMBER.



TEL. 01359 232335

Courses in Natural and Traditional Building

Orchard Barn

Rural Skills Development Centre
Far Ringshall, Mid Suffolk IP14 2LY

01473-658193

www.orchardbarn.org.uk



Heritage Home Care and Repair Courses for home-owners and builders

Traditional Carpentry, Timber Framing, Cob, Greenwood
IHBC CPD certificates on most courses

Practical building courses that don't cost you the earth, but teach you how to work with the clay under your feet, the hazel from the hedgerow, and coppiced trees from local woods.

BILDESTON ELECTRICAL

Rewires, Extensions, Board Changes or New Installations

Any Alterations to Existing Installations

(lights, sockets, etc.)

Contact Ian

01449 743664 or 07754 723685

Decorator // Home Maintenance



Painting
Wallpapering
Tiling
Decking
Fencing
and more

Contact **Pete Robins**

Telephone : 01787 319731

Mobile : 07527 113525

Simon Nicole Gardening Services & General Maintenance

Planting
Grass Cutting
Hedge Management
Tree & Shrub Pruning
Garden Waste Removal
General Tidying Up/Weeding

For a friendly confidential service & advice

CONTACT

Simon

07526 265713

nicolesimon@hotmail.co.uk

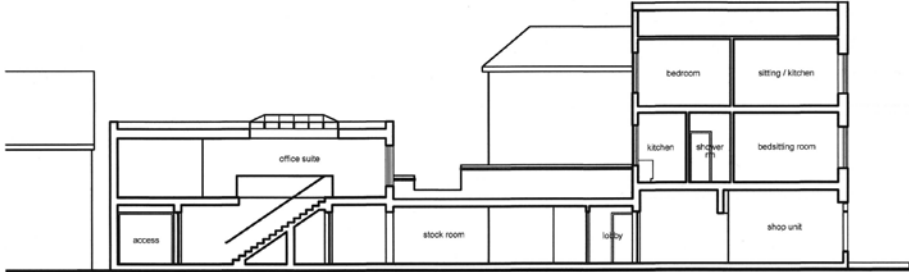
Simon Nicole, Thorpe Morieux, Suffolk

alex baldwin architects

specialising in: residential design & developments, listed buildings, extensions & alterations, and light commercial

measured surveys, planning and building regulations applications, planning appeals

WELHAM HOUSE
13 SQUIRRELS MILL ROAD
BILDESTON
IPSWICH
SUFFOLK IP7 7DY



longitudinal section thru offices, stock room, shop unit and existing flats above

T: 01449 741227

M: 07733 375625

E: alex.baldwin@tiscali.co.uk

contact: alex baldwin diparch (Oxford) ARB RIBA

S.C. PLASTERING SERVICES



**CALL SEAN FOR A
FREE QUOTE
TEL: 01449 723264
OR 07773 706006**

Friendly Experienced Teacher offers Individual MATHS Tuition

**Speciality
Confidence Building
KS1 – KS3**

**Call Colin Plummer on
01449 736918
for details and availability
or email:
colinp52@btinternet.com**

Clerk's Column

In addition to the minutes of the last meeting, there are a couple of items of information that local residents might find useful:

Local Crime

Parishioners are asked to be extra vigilant about the security of their vehicles. There has been a spate of thefts in the village which has seen catalytic converters stolen from two vehicles on Brooksfild and one vehicle on High Street over the Christmas and New Year period.

Grit Bins & Heaps

It has been confirmed with County Highways that they have records of grit bins and heaps at various locations in the village and will use their best endeavours to replenish them periodically.

An extract from the schedule for their contractors is shown below:

Church Hill	Bottom & mid-way up Church Hill
Ipswich Road	Corner of Ipswich Hill
Newberry Road	On junction to school
Rotheram Road	In cul de sac at the bottom of Rotheram Road
Wattisham Road	Junction with Chamberlin Close on verge
Wattisham Road	Junction with Brooksfild

If you have any problems with supplies then contact me via: clerk@bildeston.suffolk.gov.uk; and I will do my best to help.

David Blackburn
Clerk to the Parish Council

Introduction to Nordic Walking

Starting on Monday 4th February @ 10:00am for 6 weeks.

In conjunction with 'Suffolk Sport' a qualified Instructor will instruct and lead the group.

Cost approx £22 for the six weeks and includes use of Poles.

Meeting at and leaving from the Baptist Church, Duke St, Bildeston.

To secure a place contact Jim Haley in the first instance:

Email: bildestonbc@gmail.com Tel: 740716



February 2013

Church Services & Events in Bildeston

St Mary Magdalene

Bildeston w Wattisham Parish Church

For more information, contact Revd Barbara Stanton

Tel: 01449 744190 Email: b.stanton150@btinternet.com

3rd February	9.30am	Holy Communion	Bildeston
Candlemas	11am	Benefice Candlemas Service –	Naughton
		Presentation of Christ in the Temple	
10th February	11am	Parish Communion	Bildeston
13th February	9.30am	Service of imposition of ashes	Whatfield
Ash Wednesday		and Holy Communion	
17th February	9.30am	Holy Communion	Naughton
	11am	Family Service	Bildeston
3rd March	11am	Benefice Communion	Bildeston

For all services across the Benefice please refer to *Roundabout*,
available in St Mary Magdalene Church

Baptist Church, Duke Street, Bildeston

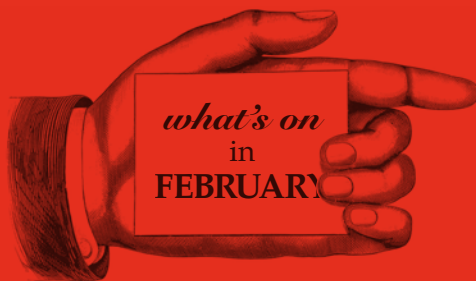
Jim Haley tel: 01449 740716 email: bildestonbc@gmail.com

Service every Sunday morning at 10:45

Lunch Club: at 12:30 on the **first Wednesday** of each month
All are welcome

Community Coffee Centre: Every Friday from **09:15 to 11:30**

Enjoy meeting old and new friends at these events!



Bildeston Community Coffee Centre

Baptist Church 9:15-11:30 **Every Friday**

Craft it Together

Baptist Church 19:00 **Every Monday**

Baby & Toddler Group

Baptist Church 9:45-11:45 **Every Tuesday**

Men's Breakfast

Baptist Church 8:00 **Last Saturday of the Month**

Aladdin

Chamberlin Hall 19:30 **Friday 1st**

Aladdin

Chamberlin Hall 19:30 **Saturday 2nd**

Bildeston Ladies Club

Retro Food The Crown 19:30 **Thursday 7th**

CANCELLED

Bildeston Community Cycling

Winter Warmer 6, Market Square 9:30 **Saturday 9th**

Parish Council Meeting

Chamberlin Hall 19:30 **Monday 11th**

More details on these events inside.

Tell us about March events!

01449 741541 / editor@bildestonbugle.co.uk



When you're finished with this Bugle please pass it on or recycle it.