



Bildeston Bugle

Issue number 263
SEPTEMBER 2012

The Village Magazine
produced for the people of
Bildeston

This issue was
kindly sponsored to celebrate
Maggie & David Miller's
45th Wedding Anniversary



BILDESTON BUGLE ADVERTISING AND FREE CONTRIBUTION INFORMATION

Our aim is to provide every resident in Bildeston with a newsletter which provides information of local interest *FREE OF CHARGE*. To that end we are required to be efficient in the space we use to print free notices.

We endeavour to include interesting tidbits, announcements for events open to the general public for free and items of a charitable nature free of charge. Ongoing free announcements need to be reduced to minimum size or make a contribution towards printing costs. Always check with us before submitting your advert and **ALWAYS** provide us with all of your contact details.

Sponsor an issue – £15 per issue

includes a brief message on the cover of the magazine and at the top of the website

Advertising Rates

	1 issue	6 issues (15% disc)	12 issues (30% disc)	
1/4 page	£2.75	£14.00	£23.10	65mm W x 92mm H
1/2 page	£5.50	£28.05	£46.20	134mm W x 92mm H
full page	£11.00	£56.10	£92.40	134mm W x 190mm H

THE SMALL PRINT

Free contributions, adverts and payments are required by the 17th of the month for inclusion in the following month's issue.

Please make cheques payable to **Bildeston Bugle** and send to:

The Editor, Bildeston Bugle, 8 Manor Road, Bildeston, IP7 7BG

Receipts cannot be issued without your full postal address.

**If we do not receive payment by the 17th of the month
your advertisement will NOT be included**

The Bildeston Bugle Editorial Team are:

Daniel Newman (editor) – 8 Manor Rd, Bildeston IP7 7BG tel: 01449 741 541

Nancy Dales (treasurer) – 142 High St, Bildeston IP7 7EF tel: 01449 741 047

Alison Sims – 1 Squirrells Mill, Bildeston IP7 7DY tel: 01449 741 813

Tricia Baldwin – 13 Squirrells Mill, Bildeston IP7 7DY tel: 01449 741 227

Vic Ling – 5 Squirrells Mill, Bildeston IP7 7DY tel: 01449 744 574

BILDESTON RANGERS FOOTBALL CLUB

The new season started on 1st September and we are pleased to announce that a successful application was made to the Suffolk and Ipswich League in the close season as a result we have a Reserve team now playing in Division 6 and managed by Steve Greenacre. The Reserve team in the main is last season's Youth U18 team so local players are able to continue to play for Bildeston Rangers.

The fixtures for the first couple of months are.

15/9 Claydon AWAY. Reserve's Willis Res HOME.

22/9 Parkside United HOME. Reserve's Stowupland Falcons AWAY.

29/9 Halesworth Town AWAY. Reserve's Elmswell Reserves HOME.

6/10 Bacton Utd 89 AWAY. Reserve's HOME.

13/10 Benhall St Mary HOME. Reserve's Sroughton Sports Reserves AWAY

20/10 Primary Cup 2nd round. Reserve's Kesgrave Kestrels AWAY

27/10 Sroughton Sports AWAY. Reserve's no fixture listed.

We are very grateful to The Crown for their continued sponsorship and accommodating all the home game after match hospitality, and as the club starts another season would like to thank those of you who support the club in a number of ways and hope to see you at some of the games too.

Ruth Finbow (Secretary)

Thank You

We would like to say a huge thank you to Alan, Lin, Margaret, Sarah and Simon for the amazing help they gave us when it was most needed, we could not have coped without them.

We also wish to thank everyone that rang and sent cards wishing Alex a speedy recovery. One again we were reminded what a caring road and village we live in. Alex and Tricia, Squirrells Mill Road.

CRAFT FAIR

CHELSWORTH VILLAGE HALL

I AM HOLDING A CRAFT FAIR ON

SATURDAY 3RD NOVEMBER 2012

ANYONE WISHING TO HAVE A STALL SHOULD CONTACT

TRACEY

ON

07415 126 339

FOR MORE INFORMATION

A SMALL CHARGE OF £5.00 PER TABLE WILL BE CHARGED

TO COVER HALL CHARGE & ADVERTISING

AFTER WHICH ANY MONEY LEFT

WILL BE DONATED TO THE POPPY APPEAL

Bildeston Ladies Club

The Bildeston Ladies Club will be reconvening on September 6th
at 19:45 at Chamberlin Hall for a Picture Quiz

(Membership of £5.00 will be due at this meeting)

All ladies are welcome. For newcomers to the village it is a great opportunity
to meet people and make friends.

Mettings for 2012:

Oct 4th - Jenny Gibbs - Turkish Shirley Valentine

Nov 1st - Dave Fell - a Reformed ex-convict

Dec 6th - Christmas Flowers | Dec 13th - Christmas Dinner



If anyone has questions about the club please contact:

Ann Shirley - Chairperson - 01449 740114

Mary Ruffell - Vice Chairperson - 01449 740841

Jean Radley - Treasurer - 01449 743650



Hearing Problems?

HEARING CARE CENTRE

Private, Independent, Local



Over 119,000 people in Suffolk alone have a hearing problem.
The Hearing Care Centre is here to help. We are caring for all of
your hearing needs locally at:

The Health Centre, Market Place, HADLEIGH

Hearing tests | Latest digital hearing aids | Outstanding aftercare service
Ear protection | Tinnitus management | Earwax removal | Home visits

To book your appointment call us on

Freephone 0800 096 2637



The Hearing Care Centre Ltd. 5 High Street, Ipswich, IP1 3JZ
To find our more visit: www.hearingcarecentre.co.uk

Karen Finch
RHAD FSHAA FRSA

HONEY BEE'S NURSERY

**Hitcham Village Hall
The Causeway, Hitcham**

**For children aged 2—5 years old
High adult : child ratio
Qualified and Experienced Staff**

2 Indoor Rooms and Large Outdoor Area

Opening Times

Monday, Wednesday & Friday 9.15a.m.—12.15p.m. or 3.15p.m.

Tuesday & Thursday 9.15a.m.—12.15p.m.

Early Drop off of 8.30a.m. available

Lunch Club available each day until 1.15p.m.

Rate is £2.50 per hour (long day £15.00)

Ofsted Registered

Early Years Funding accepted for all 3 & 4 year olds

2 year old funding may be available

Awarded the Suffolk Quality Assurance Kitemark

**Come along for a visit during any session, no appointment
necessary or ring for more details and a prospectus**

**Contact: Mrs Sharon Scarfe 01449 740764 (village hall)
01449 740581 (home)**

News From Bildeston Primary School



As you read this we will be welcoming the children back to school after their summer holiday, and we extend a special welcome to those joining our Reception Year and coming to us from other schools.

As always it's been a busy summer holiday for us, getting the school ready for the new year with our annual 'whole school deep clean'. It now looks bright and shiny and ready for lots of exciting learning! The topics for the new term are Minibeasts (Key Stage 1) and Rainforests (Key Stage 2).

We're already looking forward to some special events for the autumn term. We will be taking part in the B Natural Festival, with the choir performing on Saturday afternoon. This will be closely followed by our Harvest Festival in school.

There will be lots more exciting things to report through the term, and our young journalists are looking forward to telling you all about them in next month's magazine!

Bildeston Primary School
Newberry Road
Bildeston
IP7 7EU
(01449) 740269

www.bildeston.suffolk.sch.uk

C.H.A.P.S

Presents

‘ALL OVER BUT THE SHOOTING’

A Murder Mystery

At Chamberlin Hall, Bildeston

Friday 5th & Saturday 6th October 2012 at 7.30pm

Adults £10 Children £8 – including food. Tickets available from September 1st

Box Office Number (01449) 740995

FRIENDS OF BILDESTON SURGERY

Members of FOBS would like to thank all those who donated, helped, and contributed in any way to make our Coffee Morning at Hitcham Village Hall a success when we raised £442.20 towards the funds. This will be an annual event and we look forward to next year.

MANNING & WOODS LTD.

22 Stowmarket Road, Old Newton, Stowmarket, IP14 4EE



**BUILDING CONTRACTORS
PROPERTY MAINTENANCE
SPECIALIST DECORATORS**



Tel. 01449 673315

Email info@manningandwoods.co.uk

Website www.manningandwoods.co.uk

Manning & Woods Ltd. is formed by the merger of Mannings Ltd.
and Simon Woods Property Maintenance

TIM'S TITLE TATTLE

Letter to the Editor,

In last month's Bugle, Brian requested details of facilities for the over 60's: I can assure him that there are quite a few although some are very protective of what they have and are somewhat wary of newcomers. I understand that Brian has moved here from Hitcham which could be problematic but he will doubtless find that, given time, this small failing will be forgiven and forgotten.

In the past, some newcomers have arrived with a distinct attitude problem: they see themselves as City High Flyers whose sole aim in life is to teach us Country Bumpkins how to live life in the Fast Lane. They join local clubs and societies and, if they cannot be Top Dog, i.e. Chairman or, even better, President, within a few weeks they withdraw completely from public life and see out their remaining years as hermits.

A good place to start is the regular Coffee Morning, held between 9.30 and 11.30am every Friday in the Church Hall in Dukes Street. That is the one with the Chapel, whereas Chapel Street has no Chapel. At these Coffee Mornings there are two distinct groups – pre-school children with their parents and the over-60's. These disparate groups integrate extremely well and a good time is always had by all.

This same venue holds an over-60's lunch on the first Wednesday of every month at 12.30. The Church Hall also host a number of other events; on the Wednesday before last they organized a coach trip to Felixstowe which was very well supported and last Thursday they held a barbeque. The weather at lunchtime was a bit of a let down but we'd had a sort of rehearsal for this on Jubilee Day when we all dined outdoors in the rain which failed to dampen our spirits so we saw no reason to make a fuss and simply went for an action replay.

If you enjoy Darts, try the Red Lion on a Tuesday; there are both Indoor Carpet Bowls and Outdoor on Wednesdays at the Village Hall. You could also try the Pantomime Group every Autumn. There is Football on Saturdays and the King's Head host a Quiz Night one Thursday each month. Finally, you will always find a group of ladies gossiping most days during daylight hours outside the Bike Shop.

So, come on Brian, here is an open invitation for you to take your pick and come out and join us on equal terms. If you promise not to try a "Take Over" in your first six months we will try very hard to forget that you have come from Hitcham!

TIM, SEPTEMBER 2012

Ashley Hubbard Driving Tuition



Patient, experienced, fully qualified ADI DSA Driving Instructor.

Learner – Advanced – Refresher

Theory Test & Pass Plus Tuition

Competitive rates, door to door service in

Bildeston, Hadleigh, Stowmarket, Needham & Ipswich areas.

T: 01449 740633 or M: 07901 563281

E: ashley.hubbard@btinternet.com

Angel Delights

**Outside Caterer &
Specialised Confectioner**

Weddings – Christenings – Funerals

Birthday Parties - Dinner Parties

Barbecues

**CAKES FOR ALL
OCCASIONS**

Contact Helen

01473 82857 or 07900 900329

info@angel-delights.com

www.angel-delights.com

SUFFOLK CARPET CLEANERS

We'll get your
Carpet & Upholstery
fresh & clean.

* Stain Guard available
at extra cost.

For more information

Tel: 01449 741 550

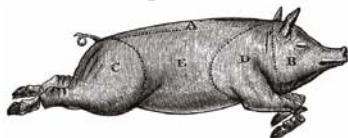
Mob: 07586 921 610

Email: info@suffolkcarpetcleaners.
co.uk

FAMILY GROCER PROVISIONS OFF LICENCE

BANK HOUSE STORES

Richard & Joan
O'Sullivan



telephone
01449 740403

Have we got the Lottery yet?

The final stage of installation is planned for Friday 17th August, so we are hoping the terminal will be up and running by the time you read this.

By popular demand, we now stock Warburton's bread, including their gluten-free range.

Save money with our special offers from 20th August until 8th September, including:

Kellogg's Variety 8 Pack ONLY £1.39

Coca Cola Cans 6-Packs 2 for £4

Fresh British Chickens ONLY £3.50

Chocolate Hobnobs 300g ONLY £1.50

Supervalu Frozen Chips 907g ONLY £1.00

Adnams Lighthouse 500ml Bottles ONLY £1.00

Carlsberg Lager 15 Can Packs ONLY £11.00

Banrock Reserve Australian Wines..... ONLY £5.45

Rosemount Founder's Australian Wine ONLY £4.99

Beck's Vier12 Bottle Packs ONLY £7.50

PLUS many, many more. Come in and pick up a leaflet.

We are also featuring some amazing savings on Londis fruit and vegetables, with many packs at just £1.

We are open from 7am to 6.30 pm Monday to Saturday and 8.00 to 12.00 every Sunday and Bank Holidays. The Post Office service is available during ALL opening times – that's 73 hours every week!

Shop Locally – You Need A Jolly Good Reason Not To!

Flourish

Boutique Hair Salon

Chair available for rent for qualified
stylist

Apprentice required for summer 2012

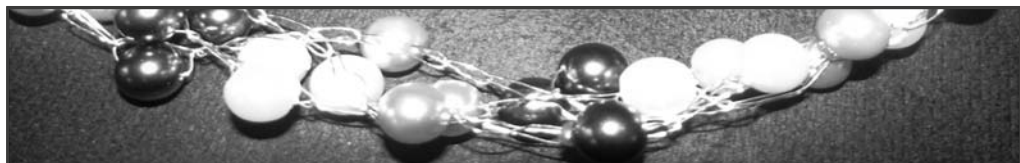
For all appointments and enquiries
please contact Kerry;

01449 674 869

Flourish, Lime Tree House,
High Road, Gt Finborough, IP14 3AA



Stay Beautiful



Gilly's Beads n Jewellery Designs

Many designs to choose from or tailored to
your individual needs.

Follow me on Facebook Gilly's Beads
or Twitter @GillysBeads

Or just send me your email and I will keep you posted
with all the new designs

I am based at Bildeston Ipswich

For more information contact Tracey
on

07415 126 339

email: mail@gillysbeadsnjewellerydesigns.co.uk

www.gillysbeadsnjewellerydesigns.co.uk



Pilates Classes Now Held in Bildeston and Hadleigh

If you want to exercise both your body and mind as well as improving your sense of well being, strength, flexibility and mobility then I truly believe pilates is for you!

I am passionate about bringing the benefits of pilates to everyone and as a fully qualified teacher certified by Europe's largest professional pilates organisation I can help you improve muscle tone and core stability, building strength from the inside out, re-balancing the body and bringing it into correct alignment.

Please contact me if you wish to join a small matwork class and allow me and the Body Control Pilates method help you achieve your goals. Pilates can benefit anyone of any age and any level of fitness. I look forward to hearing from you.

Call 07855 394 703 for more info.

*Jenny
x*



Body Control Pilates is a registered
trademark used under licence

Pilates Works 4U, The Studio, The Old Guildhall, Church Lane, Hitcham, IP7 7NN
www.pilatesworks4u.com jenny@pilatesworks4u.com 07855 394 703

CHIMNEY SWEEP

ECO SWEEP

CHIMNEY SERVICES

- NEW POWER SWEEPING METHOD USED FOR A MORE THOROUGH CHIMNEY CLEAN THAN BRUSHES.
- INDUSTRIAL HEPA FILTERED VACUUM.
- FULLY INSURED.
- INSURANCE RECOGNIZED CERTIFICATES ISSUED.
- SPOTLESS, RELIABLE AND FRIENDLY SERVICE.
- ALL CHIMNEYS, WOOD BURNERS, AGA, BOILER FLUES SWEPT.
- GUILD OF MASTER SWEEPS CERTIFICATED MEMBER.



TEL. 01359 232335

Beat rising fuel bills
Stop energy loss
Use 'Green Deal' money



'Green Deal' is a government incentive to fund home energy efficiency with no up front cost to you.

Solar investments still return over 10%
30% price drop on our Solar Panels.

Talk to us! We are local certified Solar Energy Specialists eager to give you **free** advice and survey.

Call Now: **01284 706 586**
or visit **www.ambervert.eu**



KINGS HEAD

& Brewery

Nigel, Susie, Ryan and Freya look forward to welcoming you to the Kings Head.

- After the enormous success of last year's **BNatural** we are proud to be participating in **Bildeston's second village music festival, Friday 7th to Sunday 9th September**. This is a village wide event with a main stage in the village square, musical open gardens and **free live music in the Kings Head beer garden** over the whole weekend.
- On **Friday 7th September** we have "**Harmless Insanity**" at 6pm and "**The Dandy Tricksters**" at 9pm. From 1pm on **Saturday** an **afternoon session** promoting **local young musicians** is followed by "**Georgette and the Distraction**" at 6pm and "**Buzz**" at 9pm. On Sunday from 1pm there is an **Open Mic** session followed by "**This Way Up**" at 6pm. At the end of the month on **Saturday 29th September** there is live music from "**The Star Gazers**".
- On **Thursday 27th September** we are holding a **charity quiz night** starting at 8:30pm. Thanks to July's quiz teams who raised £83 for the Women versus Cancer charity.
- Our good value homemade food uses quality ingredients that are locally sourced where possible. To reserve a table please phone Sue or Nigel on 01449 741434.
- Our opening times are as follows:

Wednesday	Open 6pm-12am (open mic/buskin night)
Thursday	Open 6pm-11pm (bar games night)
Friday	Open 4pm-12am (full menu 6-9pm)
Saturday	Open 12pm-12am (full menu 12-2pm & 6-9pm)
Sunday	Open 12pm-10:30pm (roast & full menu 12-3pm)
Monday/Tuesday	Closed (except bank holidays)

FRIENDS OF BILDESTON SURGERY

CANINE PHOTO COMPETITION

ENTRIES CLOSE 28TH SEPTEMBER. MAXIMUM PHOTO SIZE 7" X 5"

TO ENTER: WRITE THE DOGS NAME ON THE BACK OF THE PHOTO.

PLACE THE PHOTO IN AN ENVELOPE.

WRITE YOUR NAME, ADDRESS, TELEPHONE No & DOGS NAME
ON THE ENVELOPE.

ENCLOSE £1 PER PHOTO - ENTRY DONATION TO F.O.BS.

DROP IT OFF AT ONE OF THE COLLECTION POINTS,
OR POST TO F.O.B.S. C/O 23 HIGH STREET BILDESTON IP7 7EX
IF YOU WOULD LIKE THE PHOTO BACK PLEASE PUT A STAMP
ON THE ENVELOPE

ROSETTES TO 6th PLACE - PRIZES TO 10th PLACE

1st 15kg Trophy dog food + £10 2nd 3kg + £10 Tesco gift card 3rd 3kg + £5

4th & 5th 3kg + bottle wine 6th 3kg + dog treats 7-10th dog toy + treats

COLLECTION POINTS:- BANK HOUSE STORE BILDESTON - HITCHAM P O

ELMSETT P.O - HOLLOW TREES FARM SHOP –

MONKS ELEIGH P O – SOMERSHAM COMMUNITY SHOP

HIGHCLIFF VETERINARY PRACTICE HADLEIGH

TROPHY DOG FOODS are offering every entry a free sample

Please write sample on your entry envelope to receive one.

THANK YOU TO ALL OUR SPONSORS:

Trophy dog foods - Tesco - Morrisons

East of England Coop - Highcliff Veterinary practice - Purina

ANIMAL FETE SUCCESS DESPITE RAINING CATS AND DOGS

Despite the weather, the Suffolk and Essex Small Animal Welfare Fete was a great success last month. Two outbreaks of heavy rain did not dampen the spirits of visitors and volunteers who carried on regardless. Hundreds of people enjoyed a fun-packed afternoon and many entered their pets into the fun dog show and agility course. A total of £4055 was raised on the day, including over £1000 from Barclays Bank, thanks to their £ for £ match funding scheme.

SESAW would like to thank everyone who attended the Fete and helped achieve such a wonderful result. The next event will be a Book and Toy Sale, 12 to 3pm, Saturday 25th August at Leavenheath Village Hall, Wrights Way, CO6 4NW.

FORTHCOMING EVENTS

AUTUMN BAZAAR, Saturday 8th September, 12-3pm at Leavenheath Village Hall, Wrights Way, CO6 4NW in aid of Suffolk and Essex Small Animal Welfare. Good quality items, refreshments, adults 50p admission. Further details: 01206 799424.

GIANT JUMBLE SALE, Saturday 22nd September, 10.30am to 2pm at Suffolk and Essex Small Animal Welfare, Stoke Road, Leavenheath, CO6 4PP. Free admission, all proceeds to SESA. Contact 01206 851339

COUNTRY HEDGE AND GARDEN CARE

HEDGE TRIMMING, PLANTING AND LAYING
COPPICE WORK AND FRUIT TREE PRUNING
GARDEN MAINTENANCE



CONTACT:

OWEN WILLIAMS
suffolkowen@gmail.com
01449 737 983 OR 07745 799 798

EXPERIENCED, LICENSED AND INSURED CHAINSAW OPERATOR

MArch ARCHITECTURE LTD masters in architecture

We are a small, friendly Ipswich based practice with projects mostly in East Anglia and London. We tailor our service to your needs. We have considerable professional experience designing advanced and complex buildings as well as small residential projects.

We Specialise in:

- Residential Design
- Loft Conversions & Extensions
- Commercial Design and Offices
 - Interior Design
- 3d Visualisations and Graphics

We can provide:

- Outline Design
- Planning Applications
- Building Regulations
- Construction Drawings

Contact us for a **FREE** quotation

www.marcharchitecture.co.uk
email: marta@marcharchitecture.co.uk
Tel: 01473 749 226 Mobile: 079 1213 9595

FIREWOOD

DRY SEASONED LOGS

Various Loads Available
Or bags at £5.50 each

Call Carol Abbott on 01473 829130
or 07768 795981

Tree, Garden Work and Driveways also
Undertaken



BARGEWELL SKIP HIRE

2, 3, 4 & 6 Yard Skips

- Long or short term hire
- Delivery service 7 days a week
- Fast friendly service

Stowmarket
01449 615056

Mobile 07770 452378
High Rd, Gt Finborough, Suffolk

COUSINS & SON BILDESTON LTD

available to carry out all your building requirements

from

Renovations / Alterations / Extensions

to

General Repairs

Please contact Paul for a free estimate

01449 744360 or 07876 244461

or email paul.cousins268@btinternet.com

The Dedicated Autumn Garden Fair

at Mallery Cottage

Quality Plants of Distinction

Select Tulip Bulbs

Decorative Garden Pieces

Truly Useful Garden Accessories

Autumn Wreaths

Home-Baked Cakes & Real Coffee

Friday, 28th September 2012 – 10am-4pm

Wattisham Road, Bildeston, IP7 7EG

HATTERS CHIMNEY SWEEPS UK

WWW.CHIMNEY-SWEEP.ORG.UK

CHIMNEY & FLUE SWEEPING

FROM £45 INTRODUCE

A FRIEND AND EARN A

£10 DISCOUNT STOVE

MAINTENANCE

CHIMNEY REPAIRS

CCTV FLUE INSPECTION

01787 281979



The Harmany Roadshow Mobile Disco

Music For All Occasions

Call Now For A Quote

Chris

01449 740020 or 07979 385622

Leigh

07876 355412

The_Harmany_Roadshow@hotmail.co.uk

Walnut Tree Designs

BESPOKE CURTAINS & BLINDS

Free design consultation in your own home

Complete made-to-measure service for all your soft furnishing requirements

.....

UPHOLSTERY – PELMETS – HEADBOARDS – VALANCES

CUSHIONS – FABRICS – TRIMS – POLES

VENETIAN BLINDS

.....

Do call Viki Angela or Terri Oxley to arrange a free consultation

Tel: 01449 736807 / 01284 828263 M: 078269 30011

email: walnuttreedesigns@yahoo.com

Cockerells Hall, Buxhall, IP14 3DR

TOWN | COUNTRY | EQUESTRIAN



Emmerson Dutton



Kirsty Dutton



Rachel Lapworth

Bury St Edmunds, Suffolk
T: 01284 749 433

duttons.uk.com

Duttons
Estate Agents

September at Brook Farm Studio

Children's Craft Club

Sat 1st Sept. 10.30-12.30 £5

Creative Embroidery

Sat 8th Sept. 10am-1pm £20

Pottery Club

Sat 8th Sept. 2pm-4.30pm £18/£20

Figurative Drawing

Sat 15th Sept. 10am-1pm £10

Mosaics

Sat 22nd Sept. 10am-4pm £35 & £17.50

Children's Club – Every 1st Saturday of the month 10.30-12.30 £5

Craft Club – Every Wednesday 10am-12.30pm £5

Felt Making – Every Thursday 10am-12.30pm £8

Studio, Gallery & Shop – Open Tuesday-Friday 10am-3pm, Saturday 10am-1pm

For details call Hazel on 07432 138966
or email brookfarmstudio@gmail.com

See new website for all workshops
and more www.brookfarmstudio.co.uk

RYLENES CATTERY

Wallow Lane • Naughton • Nr. Hadleigh • Suffolk • IP7 7BZ

3 miles from Bildeston

5 Star Luxury Boarding in a rural countryside location

where each cat is an individual

**OPEN
ALL
YEAR**

- ☺ **R** Reliable, experienced, friendly owners
- ☺ **Y** Young/old felines boarded
- ☺ **L** Long/short stays
- ☺ **E** Extra attention re: medical/dietary needs
- ☺ **N** Night/Day vet on call
- ☺ **E** Essential vaccinations
- ☺ **S** Single/family heated & insulated chalets

LOTS OF CUDDLES & TLC



Telephone: 01473 658747 • E-mail: rylenes@btinternet.com

www.rylenescattery.co.uk

Lindsey Painting & Decorating Services

Professional & reliable interior and exterior home decor. Paint, Wallpaper Coving etc. Plus other allied services, Woodwork, tiling, laminate flooring. Curtain hanging, tracks/pellets fitted.

Terry Peters

Home 01449 741483

Mob 07809 571790

Email tac59@talktalk.net



Courses in Natural and Traditional Building

Orchard Barn

Rural Skills Development Centre
Far Ringshall, Mid Suffolk IP14 2LY

01473-658193

www.orchardbarn.org.uk



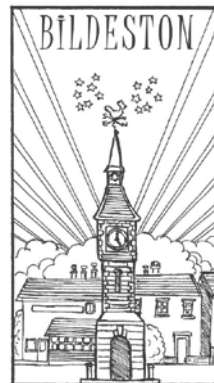
Heritage Home Care and Repair Courses for home-owners and builders

Traditional Carpentry, Timber Framing, Cob, Greenwood
IHBC CPD certificates on most courses

Practical building courses that don't cost you the earth, but teach you how to work with the clay under your feet, the hazel from the hedgerow, and coppiced trees from local woods.

BILDESTON PARISH COUNCIL

**Minutes of the meeting of Bildeston Parish Council
held on 13th August 2012 in Chamberlin Hall at 19:30**



In attendance:

Councillors:

**J Cartwright (Chair), P Cousins, D Dempsey,
R Lester, R Taylor, N Tye**

Cllr D Keane (BDC)

PCSO 3226 Jamie Fudge

V J Allard (Clerk)

There were no members of the public present

CHAIR

Cllr Cartwright opened the meeting announcing the retirement of the Clerk who was presented with a bouquet and thanked for her work with the Council.

The Clerk thanked Members and said that she had enjoyed her work but thought that now was the time to stand down.

C72/12/13 APOLOGIES FOR ABSENCE

Apologies for absence had been received from Cllrs Guttridge and Lindsay and Cllr J Pembroke (SCC).

C73/12/13 DECLARATIONS OF INTEREST

There were no declarations of interest

C74/12/13 CODE OF CONDUCT – DISPENSATIONS

There were no requests for dispensations. There followed a short discussion on the workings of the requirements of the new code of conduct. The practicalities would have to be tested but it was thought that taking into account the way that the planning application system operated, there should be no surprises.

C75/12/13 TO APPROVE THE MINUTES OF PREVIOUS MEETINGS

The minutes of the meetings held 9 and 30 July 2012 were signed as correct records.

Proposed by Cllr Lester and seconded by Cllr Tye; proposed by Cllr Dempsey and seconded by Cllr Tye respectively.

C76/12/13 POLICE REPORT

PCSO 3226 Jamie Fudge presented the police report for the period 09/07/12 to 11/08/12. During the period there had been 2 crimes reported compared to 1 crime in the same period in 2011.

BREAKDOWN OF CRIME

Burglary other building

Between 0800 on the 25/06/12 and 1700 on the 16/07/12 a property on the High Street had an outbuilding entered and two pieces of gardening equipment taken. Enquiries are ongoing

Vehicle crime

Criminal Damage – Vehicle Under £5000

Between 0000 on the 25/07/12 and 0520 on the 25/07/12 a vehicle parked on the road at Brooksfield had been scratched and the rear of the vehicle spray painted. There were no suspects for this crime.

PCSO Fudge went on to advise that S I D (Speed Indication Display) results from Ipswich Road showed that in a 50 minute period on the morning 10 August, out of 64 vehicles, 36 had been exceeding the 30mph speed limit. He distributed a graph showing the results of the test.

C77/12/13 BABERGH DISTRICT COUNCIL

Cllr Keane reported that he had discussed the recently received letter from Hopkins Homes exploring potential development sites in the village with Babergh's planning officers and he assured the Council that any development would have to go through the normal planning procedure. He would inform the Council if there was any positive outcome from the letter but he thought that the company had done the right thing in alerting the village in this manner.

Regarding the Veranda House application, he said that he thought officers were minded to refuse this application but if this proved not to be the case he would 'call the matter in' for determination by Committee.

He then reported further developments involving Babergh's ongoing integration with Mid Suffolk District Council. Each Babergh councillor had been paired with an MSDC officer to investigate how District Council services could be tailored to meet the needs of residents.

Schools, businesses and parish councils would be asked for their ideas and comments.

On social housing, he was asked if there would be realignment of policy so that both councils operated to the same criteria. It was thought that at present this was not the case. Cllr Keane would look into it and report back.

C78/12/13 SUFFOLK COUNTY COUNCIL

There was no report from the County Council this month.

C79/12/13 FOULING OF FOOTPATHS BY DOGS

Councillor Dempsey raised the issue of dog fouling across pavements and footpaths in Bildeston as an increasing problem. He circulated information regarding the danger of infection transmitted by dog faeces. Also information regarding the reporting of a dog fouling problem and penalties that may be imposed. These consisted of spot fines of between £50 - £80 although fines of £1000 could be imposed. Fouling should be reported to the District Council.

Members thought that dog owners needed to be educated to be more responsible and it was **AGREED** that Cllrs Dempsey and Cartwright, both dog owners themselves, would compose a notice for publication in the Bugle.

C80/12/13 FINANCE

Funding for Traffic Calming measures

Councillor Lindsay had circulated a report that stated that there had been some delays with the current County Council pilot scheme within Suffolk. Councillor Lindsay had asked whether Bildeston would be able to be included in future pilot schemes, A decision would be made regarding this before May 2013.

The report was discussed at some length. It was felt that the costs were escalating and that no one proposal had been addressed in isolation. Needed to find out if

- 20mph limit was enforceable
- costs and legalities of flashing traffic speed warning signs

It was **AGREED** to convene a working party to agree which traffic calming measure to pursue for further discussion with the County Council.

To Approve Payments

The following payments were approved. Proposed by Cllr Tye and seconded by Cllr Cousins

Payee	Service	Invoice ref / Date	Cheque No.	£
King's Pightle Management Cttee	Grant towards insurance		101417	£140.00
N Fenzl	Jubilee expenses	02/06/12	101418	£7.08
Clerk		25/07/12	101419	£259.16
Payments Received				
Bildeston Toddler Group	Un-cashed cheque		101369	£150.00

C81/12/13 MATTERS ARISING/CARRIED FORWARD FROM PREVIOUS MEETINGS

Bildeston Skate Facility Working Party

A letter had been received from the team giving an update on this proposal.

Mrs Holloway wrote that the skate park event had been an emphatic success. 54 riders of varying ages in all had attended. The high quality publicity work carried out by Mr Daniel Newman, editor of the Bugle, had been a significant factor in the success of the day and his support was much appreciated. News of the skate facility project and photos of the mobile skate park event were available at www.bildeston.org under the leisure tab.

On fundraising, the letter goes on to say that an application to Babergh had been successful but information to complete the application form was needed. Cllr Taylor would send. The Ipswich Funding Consultancy officer would be advising further at a meeting on 22 August then the work of further applications for funding would begin.

King's Pightle Signage

Cllr Lester reported that he had been advised by the County Council that signs in a conservation area should be of Tourist Information type. He would seek advice from Babergh's conservation officer and discuss the matter with the King's Pightle Management Committee.

APPROVED in principle that £75 be set aside for signs in the conservation area.

Grove Cemetery - wild flower area

Councillor Lindsay had circulated a report stating that he had consulted with Eastern Facilities Management, current grounds service providers and had been advised that if there had been wild flowers present, they would have grown by now and in their absence plug planting with suitable species was recommended.

AGREED that Cllr Lindsay be authorised to move this forward and have Eastern Facilities Management provide suitable 'plug plants'

C82/12/13 Planning Matters

Application Number:	B/12/00516
Location:	Land to side of, Willow Cottage, Wattisham Road
Proposal:	Erection of dwelling and cartlodge and construction of new vehicular access and parking area.
Decision	No Objection

Application Number:	B/12/00855
Location:	147 High Street, Bildeston, IPSWICH, IP7 7EL
Proposal:	Erection of a tree platform house 2.5m by 2.5m in mature ash tree. Change of use from agricultural land to domestic garden for 7m wide strip of land to north west of garden fence.
Decision	No Objection

C83/12/13 ROAD SAFETY

Community Speedwatch

There was nothing to report this month except that more volunteers would always be welcome.

Traffic Calming

See C80/12/13 above

C84/12/13 MATTERS TO BE BROUGHT TO THE ATTENTION OF THE COUNCIL

- Mill Lane was very overgrown – SCC expected to cut mid August

The meeting closed at 9.15pm

The next meeting of the Parish Council was scheduled to be held on 10 September 2012.

TRANSPORT TO HOSPITAL

There have been some changes in the way that transport to hospitals is arranged and in this article Age UK Suffolk will be explaining these, as well as covering other options available to transport you to hospital, and help with paying for them.

NON EMERGENCY PATIENT TRANSPORT SERVICES (NEPTS)

There have always been criteria covering which patients can get non emergency transport to local hospitals. Patients usually requested this from their GP surgery and the criteria was not strictly followed. NHS Suffolk (who bear the cost of NEPTS) reviewed the way transport was requested from September 2011 and a patient transport booking line was set up, with patients being required to ring this line (08458 500 774) if they wanted hospital transport to either Ipswich, West Suffolk, Norfolk and Norwich, Addenbrookes or Papworth Hospitals (journeys to James Paget Hospital are also arranged via a transport booking line but this has a separate telephone number which is 01493 453 777).

Patients who request non emergency transport will find they are asked a series of questions on their medical needs when they ring to book. The criteria which set down who can qualify for non emergency transport, are rigidly enforced by the transport booking line staff, and this has led to disappointment, frustration and worry for patients who have been told they do not qualify. Alternative transport arrangements can be both difficult and costly to arrange, and Age UK Suffolk is concerned that patients may be missing important appointments because of this.

Before telephoning the transport line make sure you have the following to hand:

- Your NHS number
- Name and address of your GP practice
- Details of your appointment at the hospital clinic
- Questions about any difficulties with mobility will be asked so, if it helps, make a list of all the issues you might need to mention before you phone.

IF YOU ARE REFUSED TRANSPORT WHAT SHOULD YOU DO?

Ring the transport line again and ask for a re-assessment of your request. This will be dealt with by a booking line team leader, who will listen to the information given and re-consider your request. If you are still refused, the reasons will be explained to you. If you still feel unhappy with the decision you should speak to the Patient Advice and Liaison Service (PALS) on 0800 389 6819.

If you feel it will be impossible to keep the hospital appointment without transport being provided, you may also want to speak to your GP or Practice Nurse, BUT first consider the other transport options suggested below.

WHAT OTHER WAYS ARE THERE TO GET TO HOSPITAL?

There are a number of community transport services available in Suffolk such as Community Car Services, Dial A Ride, and good neighbour schemes.

Community Car Services involve volunteers driving their own cars on a non profit-making basis to help you make essential journeys. You pay a contribution based on how much mileage the volunteer undertakes on the journey. You also pay the hospital car parking costs. Community Car Services are offered over much of Suffolk but are dependent on drivers being available. It helps if customers can give as much notice as possible. Ring Age UK Suffolk for details on 01473 257 039.

Dial A Ride is a local door-to-door transport service, using easy access minibuses, which are fully accessible to wheelchair users. These services are run by voluntary organisations and funded by Suffolk Community Transport. Normally a passenger joins Dial A Ride as a member and can then book journeys in advance (normally 7-10 days advance notice is required) and these are allocated on a first call, first served basis. Journeys are normally undertaken within a 10 mile radius of where the Dial A Ride scheme is based. The fare is much the same as ordinary bus services. Ring Age UK Suffolk for details of Dial A Ride services or look on the Suffolk On Board website. (see page 4).

On all of the community transport services mentioned above a friend or assistant may be able to travel with you. These services may also help you with transport to appointments at your doctor, dentist, chiropodist or local clinic.

If you have regular support from a home help agency or company, they MAY be able to provide transport to hospital. You may be required to pay for the home help's time as well as the mileage covered and parking.

Hospital Rides is a car sharing scheme which aims to match together people who need transport with people who are driving to hospital. This can be arranged via their website www.hospitalrides.co.uk. Hospital Rides is an unregulated scheme, so passengers should bear in mind that the drivers offering lifts will not be CRB checked, and the vehicles being used will also not have been checked.

IS THERE ANY HELP WITH THE COST OF TRAVEL TO HOSPITAL?

Suffolk residents who are either over the state retirement age or cannot benefit from

free bus travel because of disability, can apply for Travel Vouchers that can be used towards their use of community transport, taxis or private hire vehicles. The value of these vouchers is £50 per year and you can apply by ringing 0845 600 0659. NOTE that you cannot apply for vouchers if you already have a Free Travel Bus Pass. (Good Neighbour Schemes do not normally accept travel vouchers).

If you are on Pension Guarantee Credit you are entitled to claim your necessary travel costs to receive NHS treatment whilst under the care of a consultant, or, in some cases, following a referral for tests by a GP or dentist.

You should be able to submit your claim for the cost of transport and be re-imbursed in cash on the day of your appointment. (You are expected to use the cheapest means of transport available bearing in mind the journey you need to make, your age, medical condition and any other relevant factors). Taxi fares are not normally reimbursed.

You will need to take with you to the hospital office

- A letter from the Department of Work and Pensions, showing what benefits you are receiving. People of pensionable age must be on Guaranteed Pension Credit – and it must say this on the letter. The letter should be dated within the last year.
- Appointment letter/card
- Car parking ticket and/or bus/train ticket.

If you are not on Guaranteed Pension Credit but your income is low, and your savings are less than £16,000, you can apply for help with travel costs to hospital under the NHS Low Income Scheme. It is necessary to complete an HC1 application form. To obtain this form ring 0845 850 1166. If you have nobody to help you fill the form in, contact Age UK Suffolk's Benefits Advice Service for assistance.

USEFUL CONTACTS

NEPTS (Non Emergency Patient Transport Service) Helpline – 08458 500 774

Helpline for transport to James Paget Hospital – 01493 453777

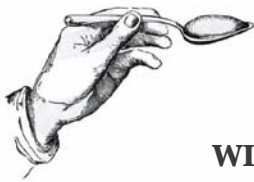
Patient Advice and Liaison Service – Suffolk 0800 389 6819

Suffolk On board helpline – 0845 606 6171

Suffolk ACRE (for details of Good Neighbour Schemes) – 01473 345 300

Suffolk Travel Line (to apply for travel vouchers) – 0845 600 0659

Age UK Suffolk Information Help Centres Ipswich – 01473 257 039



Recipe of the Month



ROASTED BEETROOT SOUP WITH FETA YOGHURT DRESSING

Ingredients

600g beetroot, medium sized,
washed and chopped into pieces

500g cherry tomatoes

2 cloves of garlic

1 onion, peeled and finely chopped

Handful of fresh thyme

2 tbsp olive oil

500ml beef stock

Salt & pepper

125g feta cheese

100g Greek Style Natural Yogurt

Serves 4

Preparation Time 10 minutes

Cooking Time 40 minutes

Method

1. Pre-heat oven to 190°C/375°F/Gas Mark 5.
2. Place the beetroot and cherry tomatoes in an ovenproof roasting pan. Next, throw in the garlic, onion and thyme and drizzle over the olive oil.
3. Roast for 25 – 30 minutes until the beetroot is soft and pulpy. Remove from the oven.
4. Transfer the beetroot to a large sauce pan and add the stock, simmer gently for 10 minutes, season and taste.
5. Using a hand blender or food processor blend until completely smooth. If you like your soup thick leave as it is, otherwise use a sieve and push through the beetroot and vegetables to make the soup smooth and glossy.
6. To serve, divide between bowls and crumble a little feta into each bowl and drizzle some yogurt over the top. Serve with crusty bread.

BILDESTON ELECTRICAL

Rewires, Extensions, Board Changes or New Installations

Any Alterations to Existing Installations

(lights, sockets, etc.)

Contact Ian

01449 743664 or 07754 723685

Decorator // Home Maintenance



Painting
Wallpapering
Tiling
Decking
Fencing
and more

Contact **Pete Robins**

Telephone : 01787 319731

Mobile : 07527 113525

Simon Nicole Gardening Services & General Maintenance

Planting
Grass Cutting
Hedge Management
Tree & Shrub Pruning
Garden Waste Removal
General Tidying Up/Weeding

For a friendly confidential service & advice

CONTACT

Simon

07526 265713

nicolesimon@hotmail.co.uk

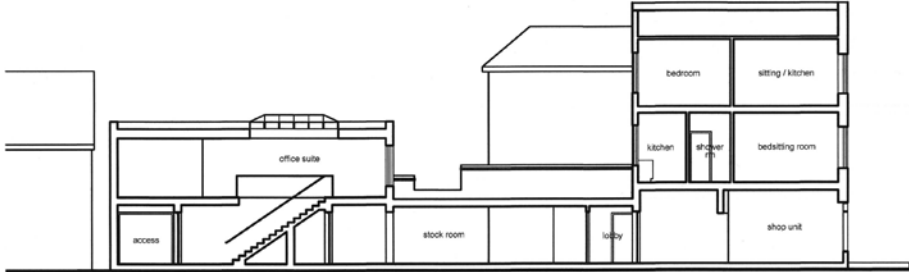
Simon Nicole, Thorpe Morieux, Suffolk

alex baldwin architects

specialising in: residential design & developments, listed buildings, extensions & alterations, and light commercial

measured surveys, planning and building regulations applications, planning appeals

WELHAM HOUSE
13 SQUIRRELS MILL ROAD
BILDESTON
IPSWICH
SUFFOLK IP7 7DY



longitudinal section thru offices, stock room, shop unit and existing flats above

T: 01449 741227

M: 07733 375625

E: alex.baldwin@tiscali.co.uk

contact: alex baldwin diparch (Oxford) ARB RIBA

S.C. PLASTERING SERVICES



**CALL SEAN FOR A
FREE QUOTE
TEL: 01449 723264
OR 07773 706006**

Friendly Experienced Teacher offers Individual MATHS Tuition

**Speciality
Confidence Building
KS1 – KS3**

**Call Colin Plummer on
01449 736918
for details and availability
or email:
colinp52@btinternet.com**

CLASS
4

MOT CENTRE

CLASS
7

CAR AND COMMERCIAL SERVICING

GENERAL REPAIRS
TYRES & EXHAUSTS

FREE LOAN VEHICLE WHEN AVAILABLE

BASE GARAGE LTD

Lower Farm Road, Great Bricett, Ipswich,
Suffolk, IP7 7DR

01473 657704 or 01473 658987

Do you know someone who needs care?

Our Bildeston team offers
specialist live in care.

Working with people of all ages, our live in carers provide one-to-one support, balancing independent living with bespoke care needs. We can assist with:

- personal care
- companionship
- housekeeping



Find out how we can help you,
please call **0808 180 1027**
or visit www.helpinghands.co.uk



Helping Hands

Established since 1989

LIFESHAPES AT THE BAPTIST CHURCH

In September we will be learning about Lifeshapes at the Baptist Church. It would be lovely if you were able to join us on Thursdays at 7-30pm, starting 6th September. Lifeshapes are designed to help us develop more authentic relationships with one another and with Jesus. God wants us to know the 'more' of living a life more devoted to Him.

Lifeshapes are not about 'doing more': they are about 'being' disciples, living out the Kingdom with Jesus as King. Let's grow together as His people. In September we will learn 4 key Lifeshapes to help us become more fully alive!

Jim Haley

September 2012

Church Services & Events in Bildeston

St Mary Magdalene

Bildeston w Wattisham Parish Church

For more information, contact Revd Barbara Stanton

Tel: 01449 744190 Email: b.stanton150@btinternet.com

2nd September	9.30am	Holy Communion	Bildeston
	11am	Benefice Communion	Whatfield
	4pm	Pet Service followed by tea	Bildeston
9th September	11am	Morning Prayer	Bildeston
16th September	11am	Parish Communion	Bildeston
23rd September	11am	Family Service	Bildeston
30th September	8am	Holy Communion	Bildeston
	11am	Harvest Festival with Bildeston Baptist Church (at St Mary's) followed by bring-and-share lunch at the Baptist Church	
2nd September	9.30am	Holy Communion	Bildeston
	11am	Benefice Harvest Festival	Lindsey
		followed by harvest lunch	

For all services across the Benefice please refer to *Roundabout*,
available in St Mary Magdalene Church

Baptist Church, Duke Street, Bildeston

Jim Haley tel: 01449 740716 email: bildestonbc@gmail.com

Service every Sunday morning at 10:45

Lunch Club: at 12:30 on the **first Wednesday** of each month
All are welcome

Community Coffee Centre: Every Friday from **09:15 to 11:30**

Enjoy meeting old and new friends at these events!



Bildeston Community Coffee Centre

Baptist Church 9:15-11:30 **Every Friday**

Bildeston Community Cycling

Back on Your Bike Market Place 18:45 **Every Tuesday**

Bildeston Ladies Club

Picture Quiz Chamberlin Hall 19:45 **Thursday 6th**

Parish Council Meeting

Chamberlin Hall 19:30 **Monday 10th**

More details on these events inside.

Tell us about October events!

01449 741541 / editor@bildestonbugle.co.uk



When you're finished with this Bugle please pass it on or recycle it.