



Bildeston Bugle

Issue number 260
JUNE 2012

The Village Magazine
produced for the people of
Bildeston

This issue was
kindly sponsored by
A Generous Bildeston Resident
in support of the Bugle



BILDESTON BUGLE ADVERTISING AND FREE CONTRIBUTION INFORMATION

Our aim is to provide every resident in Bildeston with a newsletter which provides information of local interest *FREE OF CHARGE*. To that end we are required to be efficient in the space we use to print free notices.

We endeavour to include interesting tidbits, announcements for events open to the general public for free and items of a charitable nature free of charge. Ongoing free announcements need to be reduced to minimum size or make a contribution towards printing costs. Always check with us before submitting your advert and **ALWAYS** provide us with all of your contact details.

Sponsor an issue – £15 per issue

includes a brief message on the cover of the magazine and at the top of the website

Advertising Rates

	1 issue	6 issues (15% disc)	12 issues (30% disc)	
1/4 page	£2.75	£14.00	£23.10	65mm W x 92mm H
1/2 page	£5.50	£28.05	£46.20	134mm W x 92mm H
full page	£11.00	£56.10	£92.40	134mm W x 190mm H

THE SMALL PRINT

Free contributions, adverts and payments are required by the 17th of the month for inclusion in the following month's issue.

Please make cheques payable to **Bildeston Bugle** and send to:

The Editor, Bildeston Bugle, 8 Manor Road, Bildeston, IP7 7BG

Receipts cannot be issued without your full postal address.

**If we do not receive payment by the 17th of the month
your advertisement will NOT be included**

The Bildeston Bugle Editorial Team are:

Daniel Newman (editor) – 8 Manor Rd, Bildeston IP7 7BG tel: 01449 741 541

Nancy Dales (treasurer) – 142 High St, Bildeston IP7 7EF tel: 01449 741 047

Alison Sims – 1 Squirrells Mill, Bildeston IP7 7DY tel: 01449 741 813

Tricia Baldwin – 13 Squirrells Mill, Bildeston IP7 7DY tel: 01449 741 227

Vic Ling – 5 Squirrells Mill, Bildeston IP7 7DY tel: 01449 744 574

YOUR BUGLE NEEDS YOU!

The Bildeston Bugle is a great source of information for the residents of our wonderful village. It is lovingly produced and distributed each month by a dedicated team of volunteers to ensure that you are kept up-to-date with the goings on of Bildeston life. However, none of this would be possible without YOUR help. Recently an interesting point was raised via a letter sent in: “Is there any reason why all our contributions, letters etc. must come to you by email?”

I would like to encourage letters etc. to be sent via email whenever possible because typing them up takes time – all of the content for the Bugle needs to be in an electronic format of one kind or another in order for it to be printed – and it takes a good day or so to put each issue together.

With that said, I would like to encourage as many opinions, conversations and contributions as possible as they are what the Bugle is all about. Should you be unable to submit yours via email please feel free to pop it through my door.

dn

Simon Nicole Gardening Services & General Maintenance

Planting
Grass Cutting
Hedge Management
Tree & Shrub Pruning
Garden Waste Removal
General Tidying Up/Weeding

For a friendly confidential service & advice

CONTACT

Simon

07526 265713

nicolesimon@hotmail.co.uk

Simon Nicole, Thorpe Morieux, Suffolk

MICHAEL HAIR CARE

52a High Street – Bildeston

Tel. 01449 740644

Stylist ‘TANYA’ is offering
HALF PRICE
Childrens Trimming
for £4.90
on Wednesday 6th June only

**BOOK EARLY
TO AVOID DISAPPOINTMENT**
ALL WELCOME

BEHIND THE SCENES AT BILDESTON HISTORY QUARTERLY

I have lived in Bildeston for over forty years and I am very interested in local history. My idea is to produce a quarterly magazine that would promote the history of Bildeston and the surrounding countryside. Each issue contains a miscellany of articles featuring people, places and events of the past, which are illustrated with old as well as modern photographs and images. This is not a commercial enterprise but a self-funded project with the hope that sales will cover printing costs. Bildeston Parish Council most kindly awarded me a start up grant, part of which I have used to pay reproduction fees for illustrations. For example, for the biography of Captain Edward Rotheram (after whom Rotheram Road is named), I have been able to obtain a copy of his portrait from the National Maritime Museum in Greenwich.

If you have further information concerning any of the articles that appear in the magazine or would like to make a contribution in the form of a personal reminiscence, please get in touch with me: Sue Andrews, 17 Manor Road, Bildeston, Ipswich, Suffolk, IP7 7BG. I hope that you enjoy reading *Bildeston History Quarterly* as much I enjoy putting the magazine together.

BILDESTON HISTORY QUARTERLY ISSUE 3 IS OUT NOW, PRICE £3.

On sale at Bank House Stores and Brook Farm Studio in Bildeston, Hollow Trees Farm Shop in Semer, Corn Craft in Monks Eleigh and Keith Avis in Hadleigh.

Thank You

Thank you to everyone who made our son's wedding day so memorable. We are so grateful for the help and support from the ladies at the church with the flowers, Helen the florist, the musicians, Adrian and the team at Chamberlin Hall, Cheryl and the caterers and Mick and Ray for the driving.

The real star of the day was Bildeston itself – all our guests were amazed at what a wonderful village we have. We feel privileged to live here.

Richard and Joan O'Sullivan



Hearing Problems?

Over 119,000 people in Suffolk alone have a hearing problem. The Hearing Care Centre is here to help. We are caring for all of your hearing needs locally at:

The Health Centre, Market Place, HADLEIGH

Hearing tests | Latest digital hearing aids | Outstanding aftercare service
Ear protection | Tinnitus management | Earwax removal | Home visits

**To book your appointment call us on
Freephone 0800 096 2637**



Private, Independent, Local






The Hearing Care Centre Ltd. 5 High Street, Ipswich, IP1 3JZ
To find our more visit: www.hearingcarecentre.co.uk

Karen Finch
RHAD FSHAA FRSA

Bildeston Freecycle™

Free to a good home:
a Vodafone Sure Signal

If you have a Vodafone contract and internet access you can boost your mobile signal with this little gadget.

call Charlotte 01449 741 556

URGENTLY LOOKING FOR GARAGE SPACE!

Does anyone have any garage space to rent in Bildeston?

If yes, please contact Stuart & Jo Cartwright on 741116

HONEY BEE'S NURSERY

Hitcham Village Hall
The Causeway, Hitcham

For children aged 2—5 years old
High adult : child ratio
Qualified and Experienced Staff

2 Indoor Rooms and Large Outdoor Area

Opening Times

Monday, Wednesday & Friday 9.15a.m.—12.15p.m. or 3.15p.m.
Tuesday & Thursday 9.15a.m.—12.15p.m.
Early Drop off of 8.30a.m. available
Lunch Club available each day until 1.15p.m.
Rate is £2.50 per hour (long day £15.00)

Ofsted Registered

Early Years Funding accepted for all 3 & 4 year olds
2 year old funding may be available

Awarded the Suffolk Quality Assurance Kitemark

Come along for a visit during any session, no appointment
necessary or ring for more details and a prospectus
Contact: Mrs Sharon Scarfe 01449 740764 (village hall)
01449 740581 (home)

News From Bildeston Primary School

It's been a busy start to the term. Our news reporters, Isabel Chaplin and Chloe Davies, wrote:

On Friday 27th April Year 6 went to Crucial Crew in Sudbury, a special event organised by 'The Rotary Club'. Our school goes every year to learn about keeping safe and how to deal with different dangerous situations. Many people are involved in running the afternoon, including Police, St. John's Ambulance and the Fire Brigade. It was an important afternoon because it told us what to do if we come across any situations. We all enjoyed our day!

Year 6's children have just completed their SATs tests this week and are feeling rather relieved now they are all over! We took tests in reading comprehension, a long and short writing task, spelling and two Maths papers – one with a calculator and one without. We also took a Mental Maths test, listening carefully to a CD for the questions. We have done practice optional SATs every year since Year 2 so we should be used to them, but even so it was a bit different doing it for real. The best thing about it was being allowed to bring in nice snacks from home and having slightly more relaxed afternoons to keep our energy up!

Thank you Isabel and Chloe for your report.

The rest of the school have been busy too:

Over the Easter break children were asked to keep up with their reading by completing an Easter Reading Challenge. The response to this challenge was brilliant! 47 children read between 1 and 12 books. This photograph shows them all proudly holding their certificates. Well done!



continued >

Following the success of this we have a summer Olympic Reading Challenge, which is running through the whole of this term. To complete the challenge the children need to read different types of text – fiction, poetry, newspapers etc., and give each a score out of 10. We hope to give out lots of Bronze, Silver and Gold certificates at the end of term!

The Diamond Jubilee and Olympic celebrations are a big part of our lives this term.

By the time you read this we will have completed our Jubilee Celebration week including planting a tree and the presentation of Jubilee Coins to each of the children, all kindly donated by the PTFA. The children will have had a Tea Party, making their own buns, biscuits and sandwiches, and written Jubilee prayers for a display in Bildeston church along with prayers written by other children in the village.

Also, by the time you read this, we will have started our Olympic celebrations with our very own Olympic Torch Relay, run on 18th May – the day the Olympic Torch arrived in the UK. On that same day we will have taken part in a Guinness World Record attempt for the ‘Largest Dance Routine – Multi-venue’. The aim was to get as many children as possible worldwide to dance the same dance at the same time. It was a very challenging dance and we practiced it for several weeks beforehand. We had to have independent witnesses to watch our dance as part of the world record attempt. We hope we made it!

And finally, we are looking forward to our “Olympic Sports Day” on 25th June. We are starting the whole day with an Opening Ceremony, including a performance by the whole school of the Big Dance, an Olympic Song and other items performed by each of the classes.

Then we will all take part in a range of track & field events and tournaments.

At the end there will be a Closing Ceremony including the presentation of special medals for every child taking part. The results will be given, followed by a lap of honour by the captains of the winning team. A true Olympic Sports Day!



KINGS HEAD & Brewery

Nigel, Susie, Ryan and Freya look forward to welcoming you to the Kings Head.

- Here's our **free live music for June**: every Wednesday is **Open Mic Night from 8:30pm**; there is free live music throughout our **Beer Festival Friday 1st to Tuesday 5th**; and from **9pm on Saturday 30th** the excellent Chris Francis will be playing a mix of county, blues and rock 'n' roll.
- Our monthly **charity quiz night** is on **Thursday 28th April** at 8:30pm. Telephone Sue or Nigel on 01449 741 434. Thanks to March teams raising £85 for Women v Cancer.
- Our good value homemade food uses quality ingredients that are locally sourced where possible. We are well known for tasty beer-battered fish & chips, delicious boozy beef pie (red poll beef supplied by Brook Farm, Brent Eleigh) and our freshly prepared traditional Sunday roasts. Meals are cooked to order and available to eat-in or take-away. To reserve a table please phone Sue or Nigel on 01449 741434.
- We brew our own real ales on-site (tours by arrangement) with at least one other from a local independent brewer.
- Our opening times are as follows:

Wednesday	Open 6pm-12am (open mic/buskin night)
Thursday	Open 6pm-11pm (bar games night)
Friday	Open 4pm-12am (full menu 6-9pm)
Saturday	Open 12pm-12am (full menu 12-2pm & 6-9pm)
Sunday	Open 12pm-10:30pm (roast & full menu 12-3pm)
Monday/Tuesday	Closed (except bank holidays)

ATTENTION ALL SKATERS

MOBILE SKATE PARK COMING TO BILDESTON

THE BABERGH DISTRICT COUNCIL MOBILE SKATE PARK IS COMING TO CHAMBERLIN HALL CAR PARK ON **SUNDAY JULY 15TH** AND WILL BE OPEN FOR ALL TO USE FREE OF CHARGE FROM 11.00AM TO 3.00PM

WE WOULD LIKE TO INVITE
ALL SKATE BOARDERS, ROLLER SKATERS, BMXERS AND SCOOTER RIDERS. COME ALONG TO USE THE SKATE PARK AND HELP SUPPORT THE PROPOSAL FOR A SKATE FACILITY IN BILDESTON.

A high attendance will help us to be successful in creating Bildeston's very own skate facility. We had a fantastic response to our request for you to express your interest in the April issue of the Bugle. Now we need to progress things further. We would love to see all ages and abilities there.

WE LOOK FORWARD TO SEEING YOU ALL THERE
ON THE DAY AND THANK YOU FOR
SUPPORTING THE
PROPOSAL

**ALL YOU NEED TO DO TO HELP
IS COME ALONG + RIDE!**

BILDESTON SKATE FACILITY WORKING PARTY

ANY QUERIES CALL 01449 741031

IMPORTANT:

To be able to use the skate park you must wear a helmet. A limited number of helmets, skate boards and micro scooters will be available to borrow on the day.

Please note the ramps cannot be used in wet conditions, so if it is a rainy day we may have to call an early finish or cancel.

**NO LID
NO RIDE**



Pilates Classes Now Held in Bildeston and Hadleigh

If you want to exercise both your body and mind as well as improving your sense of well being, strength, flexibility and mobility then I truly believe pilates is for you!

I am passionate about bringing the benefits of pilates to everyone and as a fully qualified teacher certified by Europe's largest professional pilates organisation I can help you improve muscle tone and core stability, building strength from the inside out, re-balancing the body and bringing it into correct alignment.

Please contact me if you wish to join a small matwork class and allow me and the Body Control Pilates method help you achieve your goals. Pilates can benefit anyone of any age and any level of fitness. I look forward to hearing from you.

Call 07855 394 703 for more info.



Body Control Pilates is a registered
trademark used under licence

Pilates Works 4U, The Studio, The Old Guildhall, Church Lane, Hitcham, IP7 7NN
www.pilatesworks4u.com jenny@pilatesworks4u.com 07855 394 703

Flourish

Boutique Hair Salon

Chair available for rent for qualified
stylist

Apprentice required for summer 2012

For all appointments and enquiries
please contact Kerry;

01449 674 869

Flourish, Lime Tree House,
High Road, Gt Finborough, IP14 3AA



Stay Beautiful



Gilly's Beads n Jewellery Designs

Many designs to choose from or tailored to
your individual needs.

Follow me on Facebook Gilly's Beads
or Twitter @GillysBeads

Or just send me your email and I will keep you posted
with all the new designs

I am based at Bildeston Ipswich

For more information contact Tracey
on

07415 126 339

email: mail@gillysbeadsnjewellerydesigns.co.uk

www.gillysbeadsnjewellerydesigns.co.uk

Chelsworth Open Gardens Day

Sunday June 24th 2012

11AM TO 5PM

**£5 PER ADULT
CHILDREN AND
PARKING FREE**



* 25 GARDENS OPEN * REFRESHMENTS AND A BARBECUE
* SPECIALIST NURSERIES & PLANT COLLECTIONS
* JAZZ GROUP & MUSICIANS IN GARDENS * CRAFT, PLANT & PRODUCE STALLS
* GARDENERS QUESTION TIME... AND MUCH MORE
PROCEEDS IN AID OF ALL SAINTS CHURCH
www.chelsworth.co.uk

SPONSORS: THE RED ROSE, LINDSEY THE CROWN, BILDESTON THE PEACOCK INN, CHELSWORTH

Ashley Hubbard Driving Tuition



Patient, experienced, fully qualified ADI DSA Driving Instructor.

Learner – Advanced – Refresher

Theory Test & Pass Plus Tuition

Competitive rates, door to door service in
Bildeston, Hadleigh, Stowmarket, Needham & Ipswich areas.

T: 01449 740633 or M: 07901 563281

E: ashley.hubbard@btinternet.com

TIM'S TITLE TATTLE

Summer cannot be far away: the Cuckoo has already arrived and the Speedwatch can be seen under the Mr. Bild Monument. For me, however, the most important thing about the month of May is that I get to observe the encroaching years as I celebrate yet another milestone birthday.

It can come as rather a shock to most people when they reach sixty-five and find that they no longer have to go to work: this life changing benchmark is usually accompanied by a severe drop in income and the need to economise becomes of paramount importance. With the current astronomical cost of a television licence this should, possibly, be the first thing to go. The question is, of course, how much would one miss the box in the corner of the living room? One could always pass the long evenings playing oneself at Monopoly, Cribbage, cards and dominoes. Take care, however, before thumbing through the newspaper looking up the chatlines: Miss Whiplash might sound highly entertaining but be prepared, before you ring her, to be greeted with a salvo of despair as she complains “Oh, my back! My neck! I have never been the same since my car accident.” What a disappointment!

Of course, a regular trip to Stowmarket could be rewarding: you could gaze into Hughes’s TV Shop where one can view five television sets simultaneously – lip reading is an easily acquired skill, or so I am told. Having decided to save on the cost of a television licence you could always invite other, like minded people to join you, and they could bring the kids along too.

If you are a really sneaky sort of person I suppose you could keep a television in the boot of your car only bringing it into the house after 9.00pm – long after that TV Licence man has gone home.

As for me, now that I am seventy-four, I can look forward with no little glee to next May when I will receive the best birthday present *ever*! My free licence will drop through the letter box and I can forget about those wretched reminders from the BBC. Yippee!

TIM, JUNE 2012

**Beat rising fuel bills
Stop energy loss
Use ‘Green Deal’ money**



‘Green Deal’ is a government incentive to fund home energy efficiency with no up front cost to you.

**Solar investments still return over 10%
30% price drop on our Solar Panels.**

Talk to us! We are local certified Solar Energy Specialists eager to give you **free** advice and survey.

Call Now: **01284 706 586**
or visit **www.ambervert.eu**

Parish Council Clerk – Bildeston

15-24 hours per month approx.

£8.34 to £10.19 per hour approx. according to skills and experience.

Bildeston Parish Council is looking for a new Clerk.

Whether you are an experienced Clerk or just have some basic relevant skills and are willing to learn, we would like to hear from you. Duties include preparing agendas and taking minutes, writing letters and issuing purchase orders and keeping the Council's records in good order. The role also includes responsibilities of the Responsible Financial Officer (RFO) for the Council.

You must be literate and numerate, with good keyboard skills and the ability to take notes of meetings quickly and accurately. However, your approach to the job is equally important. You will need to be diligent with good attention to detail, and be well organised. You will also need to be tactful and diplomatic, with good interpersonal and communication skills.

The salary is in accordance with nationally agreed scales, starting at £8.34 per hour (scale point 15). With the exception of meetings attendance, the post holder will be expected to work from home.

The Council meets in the evening of the second Monday of every month, with other meetings being called as required.

For an informal discussion about the post, or to receive an application pack, contact the Chairman, Joanne Cartwright, on 01449 741116, or email for a pack to chair@bildeston.suffolk.gov.uk

Applications must be returned by noon on 28 June 2012

Thank You

The family of the late Margaret Rose Collins would like to personally thank everyone for their cards & kind words of sympathy. It was nice to see so many family & friends at the church service on Wednesday 9th May offering their support & condolences.

A big thankyou from Tony, Roy & Jackie

FAMILY GROCER PROVISIONS OFF LICENCE

BANK HOUSE STORES

Richard & Joan
O'Sullivan



telephone
01449 740403

A Summer of Celebrations Starts Here

Flamin' June is upon us – let's hope it lives up to its name in the right way! The Jubilee weekend promises to be another fun-packed few days in Bildeston with a host of events around the Market Square. We will be open as usual over the weekend, closing at midday on Sunday, Monday and Tuesday.

**Save money with our special celebration offers from
25th May until 16th June, including:**

Robinson's Squashes	ONLY £1.00
Seriously Strong Cheddar: HALF PRICE	ONLY £2.34
Goodfellas Deep Pan Pizzas	ONLY £2.00
Pringles: HALF PRICE	ONLY £1.32
Coke 10 can Fridge Pack	ONLY £3.00
Schweppes Lemonade/Mixers	TWO for £2.00
Pimm's	ONLY £11.50
Carlsberg 24 Can Pack	ONLY £15.00
Rosemount Wines: HALF PRICE	ONLY £5.05
Oxford Landing Australian Wine	ONLY £5.50
Bud/Stella 12 Bottle Pack	ONLY £8.00

PLUS many, many more. Come in and pick up a leaflet.

We are also featuring some amazing savings on Londis fruit and vegetables, with many packs at just £1.

**We are open from 7am to 6.30 pm Monday to Saturday and 8.00 to 12.00
every Sunday and Bank Holidays. The Post Office service is available
during ALL opening times – that's 73 hours every week!**

Shop Locally – You Need A Jolly Good Reason Not To!



MUSICAL GARAGE SALE!

All around Bildeston
Saturday 7 July 9.30am-3pm

You sell your unwanted stuff and keep the proceeds – we bring the thronging crowds with the promise of live music under the Clock Tower, and put your garage on the special map.

JUST £5 A PITCH
£1 FOR A PROGRAMME ON THE DAY

To join the merriment or volunteer to help out, please contact:

Nicola Fenzl (01449) 741908
nicolafenzl@mac.com
or **Elaine Talbott** (01449) 740721
elainetalbott@hotmail.co.uk
or ask in the **Bank House Stores**

PLEASE
BAKE
A CAKE
OR DONATE
BOOKS
DVDs OR CDs
TO THE
B NATURAL
STALL

BECOME A FRIEND OF B NATURAL...

Ask in the **Bank House Stores**
or the **King's Head** for details.



Plan to bring
a houseful of friends
to **Bildeston...**
for **B NATURAL** weekend!

www.bnatural.bildeston.org

Bildeston Health Centre Patients.



Let us know what you think!

A group of volunteer patients from Bildeston Health Centre (the Patient Participation Group) are working with the staff at the centre and organising a survey to get patient views on the services the health centre provides. The survey will take place between 1st June 2012 and 30th June 2012.

Access the survey by going online at:

www.bildestonhealthcentre.co.uk

and follow the link to the survey. This is the preferred way for patients to take part. Alternatively, survey forms can be picked up and returned to the surgery.

Help will be available to those unable to get to the surgery and who want to take part.

Just ring June Carpenter on **01449 741318**
or email **junecarpenter@btinternet.com**
if you need more information or help.

BHC Patient Participation Group



Bildeston Jubilee Celebrations

Saturday 2nd June

11am

Judging Best Dressed House Competition

Sunday 3rd June

11am

St. Mary Magdalene Church - Village Thanksgiving Service

1pm

The Big Lunch On The Square

Bring A Picnic For Yourselves & Your Friends To Share

Why Not Wear Something From The Last 60 Years!

1:30pm onwards

Parade and Judging of Fancy Dress

Parade and Judging of Jubilee Crowns

Judging of Jubilee Cake

Presentation of Prize for Best Dressed House

Presentation of Jubilee Mugs

Music and Children's Games

Monday 4Th June

Lighting of the Jubilee Beacon (Behind the Grove Cemetery)

9:30pm

Procession up the Hill Leaves from the Square (bring a torch)

10:15 pm

Lighting of Beacon

Refreshments and Barbeque Organised by
the Church in aid of Church Funds

Jubilee Lunch on the Square Sunday, 3rd June

A Free Jubilee Mug for Every Child Living in the Village!

Please help us to make sure that each child receives a mug. Fill in the form in last month's Bugle (there are spares at the school & Bank House Stores).

This offer is open to all school-age children (Primary, High School & Sixth Form) who live in Bildeston.

Mugs will also be on sale at the Big Lunch!

Musicians & Photos for the Jubilee

Would you like to "do a turn"?

Do you have photos of the village/residents from the last 60 years?

Parking on the Day

Could I please ask everyone to avoid parking on the Square and the top half of Chapel Street from 8.30am on Sunday, 3rd June so that we can set up tables and chairs for the village lunch. The Car Park at Chamberlin Hall is available.

Thank you for allowing us to use this space.

D. Drury

Jubilee Committee





The Bildeston Crown

Coronation Chicken

Serves 6-8 people

Ingredients

4lb Suffolk or local chicken	3 x Bay leaf
6 x Spring onions - diagonally sliced	1 x Lemon - juiced
2 x Garlic gloves - as paste	500ml Mayonnaise
8 x Banana shallots - finely chopped	1 x Fresh apricot - cut in to 6 wedges
1 tbs Curry powder	2 tbs Coriander – ½ chopped & ½ for garnish
1 tbs Tomato puree	100 g Flaked almonds - toasted
75 ml White wine	
½ pint Chicken stock	

Method

Cook chicken in chicken stock with bay leaf until completely cooked.
 Pick chicken from bone and add the bone back to chicken stock, reduce by half and pass.
 Sauté shallots until golden, add curry powder until the powder releases its oils then add tomato puree, again until oils release.
 Add white wine and reduce to syrup.
 Add chicken and simmer for 10 minutes.
 Pass and cool.
 When cool mix mayonnaise, lemon juice, spring onion, coriander, and chicken together.
 Season and top with sprigs of coriander, toasted almonds and apricot wedges.

Accompaniments

Hot or cold rice salad
 Bombay potatoes
 Mixed salad
 Fill a French stick and enjoy with a big glass of wine

Many thanks to Chris Lee for this recipe

COUSINS & SON BILDESTON LTD

available to carry out all your building requirements

from

Renovations / Alterations / Extensions

to

General Repairs

Please contact Paul for a free estimate

01449 744360 or 07876 244461

or email paul.cousins268@btinternet.com

Do you know someone who needs care?

Our Bildeston team offers specialist live in care.

Working with people of all ages, our live in carers provide one-to-one support, balancing independent living with bespoke care needs. We can assist with:

- personal care
- companionship
- housekeeping



Find out how we can help you, please call 0808 180 1027 or visit www.helpinghands.co.uk



Helping Hands
 Established since 1989

Friendly Experienced Teacher offers Individual

MATHS Tuition

Speciality Confidence Building KS1 – KS3

Call Colin Plummer on **01449 736918** for details and availability or email: colinp52@btinternet.com

Reader's Letter: I hardly know where to begin.

I hardly know where to begin. When I read the last Bugle, my reaction was a sinking feeling. T.T's celebrations for being back in print, and you giving him a huge welcome. Not good at all.

I wish to say a few words about the previous Editor, Charlotte Ashley Cowan (who obviously cannot defend herself) and T.T.s insinuations about her lack of humour. As a long time advertiser with The Bugle, my dealings with her were always a pleasure. Charming, courteous and fair. She and the Editorial team, with some swift and timely action, stopped T.T. when his meanderings became downright offensive. Now he is triumphantly back with his sly and malicious offerings.

When the High Street was closed on April 1st, it caused huge inconvenience to many of us. Only a childish and spiteful individual would see it as a joke.

re the altering of the Parish Council Minutes/Accounts.

Most people know that they should not be meddled with, particularly if they have been signed as a correct statement. It was good that you apologised, but the words "confusion caused"???? Sorry Editor, but it was childish rather than confusing. You carry responsibility in the post, and I would suggest that you use it wisely and with maturity in future.

Good wishes.

Bildeston Long Term Resident.

Reader's Letter: Fleet Street

Dear Sir,

Is there any reason why all our contributions, letters etc. must come to you by email?

Not all households have a computer. Over the years we have been able to deliver things to Charlotte Alison or Nan and leave it to them to see that the paperwork reaches the right place. This is a little village, not Fleet Street.

Keep up the good work.

Name and Address Supplied

Letters to the Editor

If you would like to submit a letter or some editorial for publication (whenever possible) please send as text via email to editor@bildestonbugle.co.uk

BILDESTON RANGERS FOOTBALL CLUB

Another season is concluded. The Saturday team finished about half way up the Division 2 table in the SIL and the Sunday team much the same in the Treadfirst Sudbury League with respective Cup runs ending at the quarter final stages.

At the end of season trophy presentation held at The Crown the following awards were presented by Vice Chairman Steve May.

CLUBMAN AWARD Sue Lorimer

CHAIRMAN'S AWARD Scott Lorimer

SATURDAY PLAYERS PLAYER Stuart Brooks

SATURDAY MANAGERS AWARD Bubrul Miah

SATURDAY LEADING GOALSCORER Stuart Brooks

SUNDAY PLAYERS PLAYER Chad Swingler

SUNDAY MANAGERS AWARD Paul Bignell

SUNDAY LEADING GOAL SCORER Paul Botterill

Congratulations to the award winners and well done to both sets of players for a good season even though no silver ware this season. As for next season if our application to the SIL is successful we will have a Saturday Reserve team comprising in the main of the last U18 team players.

Our continued appreciation to Hayley and all at The Crown for the sponsorship and continued use of the fine facilities for our after home game hospitality and to those who support the club in many ways.

Will keep you all updated for the start of the next season and have a good summer!

Ruth Finbow (Secretary)

A journey through
HAYDN'S Oratorio

THE

CREATION

with

Leslie Olive



Church Walk, Stowmarket

soprano Christina Birchall-Sampson

tenor Paul Curievici

bass Owain Browne

7.30 pm

Saturday June 30th 2012

piano Christian White

Stowmarket
Chorale

www.stowmarketchorale.org
Reg charity 280488

Tickets: £10 Schoolchildren free

Stowmarket Chorale box-office
01449 737783

Stowmarket Tourist Information Centre
01449 676800

BILDESTON COMMUNITY CYCLING

IN ASSOCIATION WITH

CYCLE CLUB SUDBURY

BILDESTON CYCLING FESTIVAL

SATURDAY 30 JUNE, FROM THE SPORTSFIELD

**8.30am: 210k Suffolk Lanes Extravaganza
audax ride**

9.30am: 105k Bildeston Lanes audax ride

**2.00pm: 25 mile Bildeston Challenge ride
Quiet roads, and a cafe stop**

**2.30pm: Bildeston Family Challenge rides
5 or 11 mile routes
Quiet roads after you leave the village
Or just bring the children for a ride around
the Sportsfield**

**Audax rides, open to all, in conjunction with AudaxUK; see
www.aukweb.net/events for details of how to enter.**

**All other rides: just turn up and register. £4 entry for 25mile
ride; £2/family for 11 & 5 mile rides £2/family, for local
hospices. Helmets compulsory for all children.
No unaccompanied children under 16 years old.**

Further information: Robin Weaver; 01449 741048; robinandpam@tiscali.co.uk

OUR TUESDAY RIDES CONTINUE; MARKET SQUARE, 6.45PM



Libra Hypnotherapy

Body and Mind in Balance

Gill Harvey Dip. Hyp CS (LHS)

Hypnotherapy can help with a large number of emotional, psychological, habitual and psychological problems and conditions such as:

- stress and low self esteem
- anxiety & exam nerves
- weight control & smoking
- relationship issues
- habits (such as nail biting)
- phobias & sleep problems

To find out more about how hypnotherapy might help you, or to arrange for a full consultation at my practice in Bildeston, contact me by telephone or via my website.

Tel: 01449 741096

Mob: 07876 506096

www.librahypnotherapy.co.uk

Member of the
Hypnotherapy Society



Angel Delights

**Outside Caterer &
Specialised Confectioner**

Weddings – Christenings – Funerals
Birthday Parties – Dinner Parties
Barbecues

**CAKES FOR ALL
OCCASIONS**

Contact Helen

01473 82857 or 07900 900329

info@angel-delights.com

www.angel-delights.com

The Harmany Roadshow Mobile Disco

Music For All Occasions

Call Now For A Quote

Chris

01449 740020 or 07979 385622

Leigh

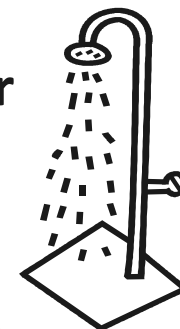
07876 355412

The_Harmany_Roadshow@hotmail.co.uk

Quality Heating Oil 100 OR 200 OR 300 litres



order just enough for
hot water over
the summer



keep your money in the
bank, not in the tank!



Badger Fuels Ltd

www.badgerfuels.com



Serving villages around **SUDBURY & HADLEIGH**

(LARGER BESPOKE DELIVERIES FURTHER AFIELD BY ARRANGEMENT)

Renting/Moving ?
Smaller Budget ?

Run out/Restart ?
Worried about Theft ?

Smaller
Delivery

Extra
Care

Quick
Response

0758 269 1111

badgerfuels@hotmail.co.uk

Debit card or Cash on delivery or Credit card (+2%)

SORRY – NO CREDIT

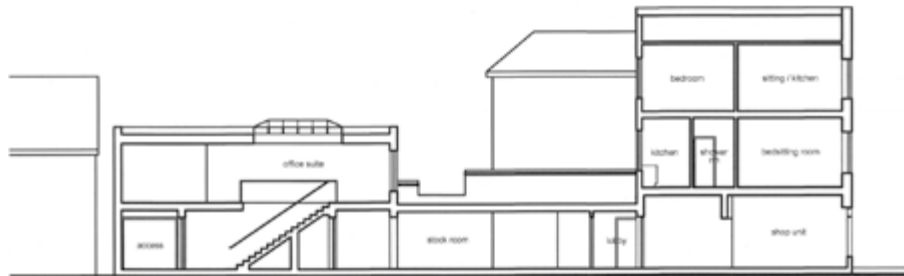
Badger Fuels Ltd – Your SMALL delivery specialist!

alex baldwin architects

specialising in: residential design & developments, listed buildings, extensions & alterations, and light commercial

measured surveys, planning and building regulations applications, planning appeals

WELHAM HOUSE
13 SQUIRRELLS MILL ROAD
BILDESTON
IPSWICH
SUFFOLK IP7 7DY



longitudinal section thru offices, stock room, shop unit and existing flats above

T: 01449 741227
M: 07733 375625
E: alex.baldwin@tiscali.co.uk contact: alex baldwin diparch (Oxford) ARB RIBA

The Tree GP

THE TREE SPECIALIST

- ✓ Tree Felling
- ✓ Tree Surgery
- ✓ Hedge & Shrub Pruning
- ✓ Firewood
- ✓ Stump Grinding
- ✓ Section Dismantling
- ✓ Tree Planting
- ✓ Debris Removed From Site

FRIENDLY PROFESSIONAL ADVICE & FULLY INSURED

Tel: 01473 359582

www.the-tree-gp.co.uk

FREE
QUOTE!

Lindsey Painting & Decorating Services

Professional & reliable interior and exterior home decor. Paint, Wallpaper Coving etc. Plus other allied services, Woodwork, tiling, laminate flooring. Curtain hanging, tracks/pellets fitted.

Terry Peters

Home 01449 741483

Mob 07809 571790

Email tac59@talktalk.net

Felt Jewellery Making with Hazel Bradshaw

Sun 3rd June drop in session 2pm-4pm Part of Suffolk Open Studios

Clay Buttons, Beads & Brooches with Emma Robertson

Sat 9th June drop in session 10am-12pm £5 Part of Suffolk Open Studios

Paper Making Demonstration with Hazel Bradshaw

Sat 9th June 2pm-4pm Part of Suffolk Open Studios

Precious Metal Clay Workshop with Carol Phillips

Sun 10th June 10am-4pm £58 including materials

Figurative Drawing

Sat 19th 10am-1pm £10

Felt Making with Hazel Bradshaw

Sat 19th drop in session 2pm-4pm Part of Suffolk Open Studios

June at
**Brook
Farm
Studio**

Studio and shop open every weekend in June 11am-5pm as part of Suffolk Open Studios. Studio housing six artists work see website www.suffolkopenstudios for details. Free tea & biscuits to all visitors to the exhibition.

For details call Hazel on 07432 138966 or email brookfarmstudio@gmail.com

Garden & Property Maintenance

Weeding – Hedges – Lawns – Fencing – Patios – Pruning

Internal and External Home Improvements

Reliable and Dedicated Service

For your GARDENING needs
call JAMES

Tel: 01787 312 401
Mob: 07817 208 869
email: jameskossick@gmail.com

For your PROPERTY needs
call IAN

Tel: 01787 313 222
Mob: 07791 647 187
email: iankossick@btinternet.com

CHIMNEY SWEEP

ECO SWEEP CHIMNEY SERVICES

- NEW POWER SWEEPING METHOD USED FOR A MORE THOROUGH CHIMNEY CLEAN THAN BRUSHES.
- INDUSTRIAL HEPA FILTERED VACUUM.
- FULLY INSURED.
- INSURANCE RECOGNIZED CERTIFICATES ISSUED.
- SPOTLESS, RELIABLE AND FRIENDLY SERVICE.
- ALL CHIMNEYS, WOOD BURNERS, AGA, BOILER FLUES SWEEP.
- GUILD OF MASTER SWEEPS CERTIFICATED MEMBER.



TEL. 01359 232335

TOWN | COUNTRY | EQUESTRIAN



Emmerson Dutton



Kirsty Dutton



Rachel Lapworth

Bury St Edmunds, Suffolk
T: 01284 749 433

duttons.uk.com

Duttons
Estate Agents

BILDESTON PARISH COUNCIL

Minutes of the meeting of Bildeston Parish Council
held on 14th May 2012 in Chamberlin Hall at 19:30

In attendance:

Councillors:

J Cartwright, P Cousins, D Dempsey, D Drury, A Guttridge, R Lester, R Lindsay, R Taylor, N Tye

Cllr J Pembroke (SCC)

PC 704 Ruth Horton, Jessica Holloway (Bildeston Skate Facility)

V J Allard (Clerk)

There were no other members of the public present

C15/12/13 APOLOGIES FOR ABSENCE

Apologies for absence had been received from Cllr Keane

C16/12/13 DECLARATIONS OF INTEREST

Cllr Guttridge declared that he was an officer of Suffolk County Council

C17/12/13 ELECTION OF CHAIRMAN

Cllr Lester proposed Cllr Cartwright. This was seconded by Cllr Drury

Cllr Cartwright accepted the position, signed the Declaration of Acceptance of Office (witnessed by the Clerk as Proper Officer) and took the chair.

C18/12/13 ELECTION OF VICE-CHAIRMAN

Cllr Lindsay proposed Cllr Guttridge. This was seconded by Cllr Tye and Cllr Guttridge accepted the position.

C19/12/13 TO APPROVE THE MINUTES OF PREVIOUS MEETING

The minutes of the meetings held 16 April were confirmed and signed as a correct record subject to Cllr Robin Taylor being added to the list of attendees.

C20/12/13 ELECTION OF REPRESENTATIVES

Area of Interest	Role	Councillor
Footpaths	Portfolio	David Dempsey
Street Lights	Portfolio	Robin Taylor



Wattisham Airfield Liaison	Portfolio	Richard Lester
Roads and Traffic	Portfolio	Neville Tye
Chamberlin Hall	Representative	Andrew Guttridge
Coronation Playground	Portfolio	Paul Cousins
Children's Playground	Representative	Paul Cousins
P.C.C	Contact	Richard Lester
Baptist Chapel	Contact	Paul Cousins
TON Class Liaison Officer	Contact	Neville Tye
King's Pightle Pocket Park	Liaison	Richard Lester
Sportsfield	Liaison	Diane Drury

A position of liaison with the Primary School was discussed and could be added to the list in another year.

C21/12/13 POLICE REPORT

For the period 9 April to 11 May there had been 2 crimes recorded within the parish, this compared to 5 crimes for the same period last year.

BREAKDOWN OF CRIMES

Theft from Motor Vehicle

Between 1600 on the 27/04/12 and 0530 on the 28/04/12 a premises on Ipswich Road had its yard entered and a vehicle broken into.

PC Horton also reported another incident involving a vehicle which had been parked at Chamberlin Hall. The vehicle's window had been smashed and a handbag taken. She reminded everybody not to leave valuable items on show in parked vehicles.

Regarding the alleged hit and run incident in Wattisham Road, she would pass on details to the Clerk in due course.

C22/12/13 SUFFOLK COUNTY COUNCIL

Cllr Pembroke did not have much to report but although he had spent quite some time on the matter of the school bus, officers had not been able to identify any other stopping places.

C23/12/13 BABERGH DISTRICT COUNCIL

There was no report from Babergh this month.

C24/12/13 FINANCE

Charitable Grants 2012

Proposed and seconded by Cllrs Tye, Guttridge and Taylor, the following grants were awarded for 2012.

Organisation		Letter dated/ recd	2011 Grant	2012 Grant
Suffolk Accident Rescue Service	Accident Rescue	December 2011	£100	£100
Sudbury & District CAB		No letter		
Stowmarket CAB		January 2012	£100	£100
Sudbury Newstalk	News for blind & partially sighted	February 2012	n/a	No grant
Helping Hands		No letter	£150	£150
Friends of Bildeston Health Centre		No letter	£100	£100

Insurance Renewal 2012

Proposed by Cllr Lester and seconded by Cllr Lindsay that the quotation from the current insurers be **ACCEPTED**. Also proposed was the AGREEMENT to continue to insure through Came and Co for the next three years offering a further discount.

Coronation Playground – Litter Bin

It was **AGREED** that a black litter bin with black liners was required. Proposer Cllr Guttridge and seconded by Cllr Drury.

To Approve Payments

The following payments were approved. Proposer Cllr Cousins seconded by Cllr Tye

Payee	Service	Amount
Black Type	printing/Bnatural	£711.00
Running Imp	Jubilee mugs etc	£710.35
RFO		£261.68
Clerk		£413.79
SCC Suffolk Enterprise	Picnic Bench Adventure Playground	£486.00
Eastern Facilities Management Solutions	grass cutting Coronation Playground Cemetery	£194.17
Babergh DC	Brown Bins (cemetery)	£120.00
Broker Network Ltd	Annual Insurance renewal	£1,598.61
Babergh DC	Jubilee TEN permit	£21.00

C25/12/13 MATTERS ARISING/CARRIED FORWARD FROM PREVIOUS MEETINGS

Coronation Playground

Bildeston Skate Facility Working Party

Jessica Holloway circulated more detailed costings and reported on the grants available. She was very hopeful of help from Biffa but had other proposals should not that application be successful.

AGREED that the Council fully supports this proposal up to a sum of £5,000.

Proposed by Cllr Taylor and seconded by Cllr Guttridge.

Bildeston Skate Park day had been arranged for the 15th of July at Chamberlin Hall

Hard Surface Play Area

The contractor had agreed to carry out remedial works and had requested a letter regarding the ongoing problems with the subsoil in this location. **AGREED** that an appropriate letter be sent. Proposed and seconded by Cllrs Lester, Guttridge and Taylor.

Market Square

To be carried forward

C26/12/13 Planning Matters

Planning appendix A

Application Number:	B/12/00441
Location:	Bentons, Wattisham Road
Proposal:	Erection single-storey rear extension (following demolition of existing); Erection of first floor bay window extension and reconstruction of utility block (following demolition of existing)
Decision	No Objection

Application Number:	B/12/00482
Location:	Great Copt Hall, Ipswich Road
Proposal:	Application for Listed Building Consent - Erection of a single storey conservatory to rear elevation.
Decision	No Objection

Application Number:	B/12/00572
Location:	Bildeston Health Centre, High Street
Proposal:	Fell to ground level 1 No. Ash tree.
Decision	Object for the time being in the absence of any tree management plan for the site

Planning Appendix B Decided by Babergh District Council

Application Number:	B/12/00409
Location:	White Lodge, 5 Market Place, Bildeston, IPSWICH, IP7 7EN
Proposal:	Remove 1 no. Maple tree (T1), reduce 1 no. Maple (T2), Acacia (T3) and Liquid Amber trees (T4).
Decision	GRANTED

Application Number:	B/12/00402
Location:	3 Squirrells Mill Road
Proposal:	Trim overhanging branches of 1 no. Sycamore tree
Decision	GRANTED

Application Number:	B/12/00326
Location:	9 Chapel Street
Proposal:	Erection of greenhouse.
Decision	GRANTED

C27/12/13 ROAD SAFETY

Traffic Calming

An open afternoon and evening meeting to discuss various proposals for Traffic Calming in Bildeston had been arranged for 16 May. A good attendance was hoped for following a mail drop of leaflets through out the village. There then followed a lengthy discussion on the questionnaire that attendees would be invited to complete offering their views on the proposals being considered. Full data was available on the village website.

Community Speedwatch (CSW)

It was reported that a campaign in which the police had been involved had been successful.

C28/12/13 MATTERS TO BE BROUGHT TO THE ATTENTION OF THE COUNCIL

- To hold a 'money meeting' before the next PC meeting to discuss budgets and commitments
- Members thanked Richard Lester for his term as Chairman
- Cllr Drury reported that quite an amount of funding had been received towards the forthcoming celebrations for the Queen's Diamond Jubilee. The Church would be providing a barbeque with drinks
- Cllr Taylor reported the need to find an alternative intranet provider if the service continued to be required

- Cllr Lindsay was concerned about the Adventure Playground following the reports of vandalism there. Cllr Guttridge would pursue with the management ctte.
- Cllr Cousins reported overgrowth on paths at the garages on Brookfield, an overgrowing hedge at the bottom of Wattisham Road and an inappropriate number of vehicles at Beacon House, Brookfield
- Cllr Tye was concerned at the persisting problem of the lack of mobile 'phone signal in the village
- Cllr Cartwright reported a fading 'elderly persons' sign in Ipswich Road

C29/12/13 RESOLVED that pursuant to section 100(4) of the Local Government Act 1972 (as amended) the public be excluded for item 15 of the agenda in view of the fact that, if the public were present, there would likely be disclosure to them of exempt information under paragraph 1 of Part 1 of Schedule 12A of said Act as amended.

Reason 1. Information relating to an individual.

Reason 4. Information relating to staff contracts.

C30/11/12 STAFF MATTERS

A suitable plan of action was **AGREED**

The meeting closed at 10.10PM

The next meeting of the Parish Council was scheduled to be held on 10 June 2012.

BILDESTON PRIMARY SCHOOL

SUMMER FETE

SATURDAY 30 JUNE - FREE ADMISSION
11AM-2PM

BARBEQUE & BEER TENT

**GRAND DRAW - FIRST PRIZE £100
OLYMPIC TORCH PARADE**

MISS LESLEY DANCE
CHILDREN'S RACES
5-A-SIDE FOOTBALL
TAG RUGBY

**TOMBOLA
CAKES
STACKERS
TUG OF WAR**

**BOUNCY CASTLE
TOY TOMBOLA
CROCKERY SMASH
WHEEL OF FORTUNE**

PARKING AVAILABLE IN BILDESTON SURGERY.

**IF YOU HAVE DONATIONS FOR ANY OF THESE STALLS PLEASE CONTACT 01449 740269
OR DELIVER THEM TO THE SCHOOL OFFICE. THANK YOU.**

Bildeston Annual Parish Meeting 2012

Held 23 April 2012 at 7.30pm in Chamberlin Hall

Not to take up unfair space in the Bugle, these notes have been cut, much abbreviated and fitted into two columns. Apologies to all contributors.

A full copy will be found on the Bildeston Village Website or may be collected from the Clerk (3 Market Place, Bildeston 01449 740849)

Present:

Councillor R Lester (Chairman), Councillor J Cartwright, Councillor D Dempsey, Councillor D Drury, Councillor A Guttridge, Councillor R Taylor, Councillor N Tye, Mr J Pembroke (County Councillor), Mr D Keane (District Councillor)

PC 704 Ruth Horton, V J Allard (Clerk)

One member of the Public

Apologies:

Councillors P Cousins and R Lindsay, Adrian Chinery (Chamberlin Hall Management Committee), Robin Weaver (Bildeston Community Cycling) and PCSO 3226 Jamie Fudge

Minutes

The minutes of the meeting held on 18 April 2011 (circulated) were accepted as a correct record.

Parish Council Chairman's Report – Councillor R Lester

The council has a good balance of both fresh and time served members representing well the needs of all in the community. From diverse backgrounds, councillors bring a wide range of skills and attributes. The Councillors are all volunteers and give up their time to serve the community, they should all be thanked.

Paula Gladwell provided excellent service and support to the council as the Responsible Financial Officer (RFO) and has decided to resign her position with Bildeston to focus on serving as Clerk in her other parishes. We thank Paula for her effort and support since taking over from Malcolm Baker and recognise that she has brought a level of governance and rigor to the council.

We welcome two new councillors this year in Robert Lindsay and Diane Drury. Robert joined in June and Diane joined in October, both as co-opted members of the council. We look forward to their contributions in the future. We will continue to support all councillors new and old with access to appropriate training courses, books and other material.

Thanks to County and District Councillors Jeremy Pembroke and Desmond Keane, who with their regular attendance at the Council's meetings, keep Members abreast of business at the other authorities and maintain an insight into the bigger picture.

Council Tax

Due to the continuing economic situation the Parish Council agreed not to increase the parish precept.

Police Report

Bildeston is a low crime area which is evidenced through the monthly crime reports that are received. PCSO Fudge continues as our representative from the police and we look forward to his continued reports.

Community Speed Watch

The Community Speed Watch has now been in operation for two years with a number of other villages and has proven to be a success with the team reporting actual reductions in

speeds during their watch. Reports are received each month from the Community Speed Watch team and thanks go to all the volunteers from the village for doing a great job.

Traffic Calming Working Party

This year the issue of traffic speeds and options for calming speeds through the village has been high on the agenda. Robert Lindsay has chaired a working party looking at the problems and what options are available to the village and the working party will be presenting their findings to the village later at the beginning of the next council year.

Support for Community Lead Projects

The Parish Council provided support for King's Pightle with financial support and a member of the council joining the Kings Pightle Management Committee.

The Council will continue to maintain a fund specifically for pump priming of new facilities, services or for attracting external funding.

Planning

The parish council are involved in the planning process as statutory consultees. In order that the Council's input is valued, it will deal with consultations professionally. Its responses will be strictly limited to planning issues and will generally be No objection, objection or support with support being restricted to schemes where there is community wide benefit. Where responses are objection or support, these will be qualified. The Council responds to every consultation within the 21 day consultation period and have scheduled additional meetings to ensure this is possible.

Clock Tower

The council continue to maintain the clock tower. I would also like to thank Mr Scarfe, the Clock Winder, for his regular winding of the clock in the tower.

Christmas Tree

The Christmas Tree was again a credit to the village and thanks on behalf of the village to Tina Hawkins for coordinating its delivery, erection, decoration and removal. The council

continue to provide grants towards the erection of the Christmas Tree.

Affordable Housing

Babergh District Council and Orwell Housing Association have completed the development of the affordable housing scheme on Wattisham Road that was first presented to the council in 2010. The scheme that Babergh presented for the redevelopment of 2 houses in Brooksfield commenced during this last year and we look forward to its completion.

Footpaths

The PC continues to monitor footpaths and act a focal point for communication back to SCC Highways who maintain them.

Coronation Playground

Last year the council provided an area at Coronation Playground for a basketball hoop and a "kick wall" providing additional recreational facilities for teenagers, which was a requirement identified in the parish plan. The council are supportive of further recreational facilities in this area for teenagers and would welcome realistic proposals in this area.

Affordable Housing

Babergh District Council and Orwell Housing Association have completed the development of the affordable housing scheme on Wattisham Road that was first presented to the council in 2010. The scheme that Babergh presented for the redevelopment of 2 houses in Brooksfield commenced during this last year and we look forward to its completion.

Footpaths

The PC continues to monitor footpaths and act a focal point for communication back to SCC Highways who maintain them.

Coronation Playground

Last year the council provided an area at Coronation Playground for a basketball hoop and a "kick wall" providing additional recreational facilities for teenagers, which was a requirement identified in the parish plan. The council are supportive of further recreational facilities in this area for teenagers and would welcome realistic proposals in this area.

Finally, I would like to thank all of the Parish Councillors for their hard work and dedication over the past year. I know that Councillors put in a good deal of work on behalf of the Council, beyond attending Council meetings.

The Financial report 2011/12, was circulated and received.

Report by County Councillor – Councillor Jeremy Pembroke

Councillor Pembroke presented a general report from the County Council the main points of which were:

- The top challenge is, of course, the budget.
- Council tax freeze for the second year in a row.
- Despite the financial pressures, this was achieved without needing to use the Government's one-off council tax freeze grant, which will instead be used to support economic growth projects in Suffolk.
- £50 million budget gap we face over the next two years will be met by cutting management and back-office costs, finding greater efficiencies and cutting bureaucracy.
- County's library service moved to a new operating model which will oversee our libraries working with local community groups to develop the services to meet local needs more efficiently.
- Fire and Rescue Service joined forces with Cambridgeshire to create a combined fire control centre for the people of both counties delivering far better value for money for the Suffolk tax payers
- Plans to find a new provider for council-run care homes nearing completion. Independent providers already manage 90% of care homes in Suffolk, and the best of these are of similar or better quality than council-run homes, as well as being cheaper.
- Education, changes continue apace. There are now around 40 schools in Suffolk that have become, or are about to become, academies, and so independent of County Council control.

- High-speed broadband. The County Council's investment of £10 million in this project being matched by Government, and, over the next few months, a provider will be selected to begin work. The first improvements will hopefully be seen by the early part of next year, including in some of the most hard-to-reach areas.

The Chairman thanked Councillor Pembroke for his report and his continued support which was always very much appreciated.

Police report for the period 1 April 2011 to 1 April 2012

During this time there has been 39 crimes recorded that affect the parish Bildeston. This compares to 48 the previous year.

PC 704 Ruth Horton, based in Sudbury and, in conjunction with PCSO Fudge, would be Bildeston's local police presence. She reported that speeding vehicles were a nuisance in most villages but due to the efforts of the Speedwatch team, there was less of a problem in Bildeston than there was elsewhere. She thanked and congratulated the team for their efforts.

The Chairman added his and the Council's appreciations to the CSW group and thanked PC Horton for her attendance.

PCSO 3226 Fudge
New Non Emergency Telephone: 101
Babergh West SNT
01 May 2012

Chamberlin Hall report (includes Bowls Club and Adventure Playground)

It's been a challenging year with Chamberlin Hall no different to any other venue or business, as again there were increases in energy, insurance and waste disposal costs, plus 10% of the annual rate fee.

Hiring's have been steady with weddings and parties at a similar level to the previous year.

Fund raising events included a craft and food fair, Christmas dinner dance and two productions by CHAPS, Fawley Towers and the recent pantomime Cinderella. These were all successful and added to needed funds.

Chamberlin hall Management Committee have again been committed to maintaining Chamberlin Hall, new items this year include Safety Cut Outs fitted to the stage area re: sound and lighting. Upgrades have been made in the kitchen and bar area and a dish washer has been installed.

The Bowls Club continue to maintain the Bowls Green and surrounding area and are the envy of other clubs.

The Adventure Play Area has again had problems with no committee to run the area and recently it was closed due to vandalism.

Thank you
Adrian Chinery, Chairman

Bildeston Primary School

No report.

King's Pightle report

The Park continues to mature and is becoming an increasingly valuable habitat for a wider range of wildlife. We consult regularly with SWT (Suffolk Wildlife Trust) on our maintenance and development plans. We thank SWT and in particular Tracey Housley for her continued support.

The management committee is considering ways to further encourage local interest in Kings Pightle Park. We are planning, with the help of SWT, to hold educational and whole family events to engage and generate public interest. We were pleased to welcome a group of children from Bildeston Primary School this year who spent a day in the park planting a natural hedge.

We have started a project to improve facilities and access. We will create a picnic area just outside the park to encourage families to come to the park and stay longer. A custom built bird hide will be added for some serious nature watching. We are grateful for support from Bildeston Parish Council who will provide up-to £1500 to help us attract external backers for the £8K project.

The committee now numbers just three following the resignation of David Halls. We would be pleased to welcome new members

or helpers at any time. With such a small committee fund raising is beyond us, our efforts are rightly focussed on increasing awareness, usage and committee members.

We are extremely grateful to Bildeston Parish Council who supports the park, picking up costs for grounds maintenance and admin from the nature bequest it manages. Our balance of funds has remained at £20 for another year.

The Chairman thanked Mr Robin Taylor for this report.

Bildeston Community Cycling

Bildeston Community Cycling was formed in early 2009.

In 2011, starting towards the end of April, a series of rides was held on Tuesday evenings, starting from the Market Place. Rides continued throughout the summer, until the evenings got too dark at the end of August.

Nineteen rides were held through the summer, with an average of 10 riders. The rides used quiet lanes wherever possible. The year started with two rider groups, one doing 8 or 9 miles, the other doing 14 or 15 miles. The longer distance group covered a total of 304 miles over the summer, the shorter distance group 200 miles. A 25 mile Challenge ride was also run from the Sportsfield in July, in conjunction with Cycle Club Sudbury, who were organising other longer distance rides on the same day. A total of £200 was donated to local Hospices.

Monthly 25 mile 'Winter Warmer' Saturday morning rides with a cafe stop have also been held through the winter, with rider numbers varying depending on the weather, and averaging 7.

Robin Weaver
24 February 2012

Bildeston Community Speedwatch (CSW)

Community Speedwatch Report Year 2011 – 2012.

Since the last Annual Parish Meeting, Community Speed-watch has operated in Bildeston on 22 occasions.

Approximately 250 vehicles pass through our checkpoints during every one and a half hour session.

During the last 12 months, thanks to our Community Speed-watch Team, speeding vehicles continue to be in decline.

A typical session, now records around 2 – 4 speeding vehicles.

There are 7 approved and registered CSW Police Volunteers, who are residents of Bildeston, of whom 6 are currently active.

To these willing volunteers, I would like to take this opportunity to thank you all for your support, contribution and commitment to our scheme over the last 12 month period.

The involvement of this group of individuals has helped improve both the quality of life and maintain a safer environment for our residents.

The ongoing support of The Inspector, Sergeants and Officers of the Babergh West SNT, together with the background support of the CSW Unit at Martlesham Headquarters, has been very much appreciated, allowing us to operate effectively and professionally with our objectives and task. Jeremy Pembroke has throughout, voiced his enthusiasm and supports towards our scheme and achievements, and this is very much appreciated by the entire team.

Bildeston, is currently supporting Lavenham Parish, in setting up it's Community Speedwatch, operation.

There are unfortunately some in our community, who do not appreciate the efforts of our team. Whilst operating, we are quite often subjected to both verbal and hand gestured obscenities.

The purpose of Community Speed-watch, is not to catch as many people as possible, but to encourage motorists to slow down within

our village.

The aim of Bildeston Community Speedwatch, over the next 12 months, will be to remain proactive by carrying out regular speed checking at all of the approved locations, within the village.

Whilst we have our current band of loyal volunteers, with additional volunteers from our Community being prepared to work alongside us, we could operate more frequently reinforcing our message that speeding in our village is unacceptable.

Bildeston Community Speedwatch Team.

Report by District Councillor – Councillor Desmond Keane

At-a-glance – the headline achievements

In 2011/2012 Babergh has:

- Commenced integration with Mid Suffolk District Council. Babergh and Mid Suffolk have challenging integration and transformation plans that have been moving forward swiftly since the appointment of a new, joint Chief Executive Charlie Adan in May 2011 and senior management team later in the same year.
- Charlie Adan has been appointed to oversee a radical transformation in the way in which we do things and how we deliver them. Both councils have continued to plan and deliver ways of bringing the two work forces together as a way of achieving savings and improving support for front line services in a era of reducing resources.
- Commenced the Shared Revenue' Partnership with mid Suffolk and Ipswich, maintaining service delivery, increasing efficiency and providing value for money within our Revenue and Benefits service.
- Achieved Efficiency Savings – Over the past six years, Babergh consistently exceeded the efficiency targets set by the government and has done so by identifying savings and efficiencies that have not adversely impacted on services for our residents. Maintained Council tax and tax base as one of the lowest in the country.

- Progressed affordable housing on two Babergh owned sites and three rural exception sites.
- Worked in partnership with Suffolk to implement a night time economy management plan to ensure there is no increase in criminal damage and serious public order offences (including violence)
- Commenced work on the new community and sports facility in Hadleigh.
- Held a joint Babergh and Mid Suffolk Business Evening attracting around 90 attendees, actively engaging with and supporting the local business community.

The Chairman thanked Councillor Keane for his report and for his regular attendance at parish Council meeting throughout the year.

**There being no other business,
the meeting closed at 8:20pm**

— — — — —

Helping Hands



We are always here to lend a hand
No job too small



Just give us a call
Monday – Friday
9am-5pm

01449 741491 / 744360

The Bildeston 'Good Neighbour' Scheme
Run by the community for the community
Volunteers required, please
give us a call if you can help!

RYLENES CATTERY

Wallow Lane • Naughton • Nr. Hadleigh • Suffolk • IP7 7BZ

3 miles from Bildeston

5 Star Luxury Boarding in a rural countryside location
where each cat is an individual

- ☺ **R** Reliable, experienced, friendly owners
- ☺ **Y** Young/old felines boarded
- ☺ **L** Long/short stays
- ☺ **E** Extra attention re: medical/dietary needs
- ☺ **N** Night/Day vet on call
- ☺ **E** Essential vaccinations
- ☺ **S** Single/family heated & insulated chalets

LOTS OF CUDDLES & TLC

Telephone: 01473 658747 • E-mail: rylenes@btinternet.com

www.rylenescattery.co.uk



**OPEN
ALL
YEAR**

Walnut Tree Designs

BESPOKE CURTAINS & BLINDS

Free design consultation in your own home

Complete made-to-measure service for all your soft furnishing requirements

.....

UPHOLSTERY – PELMETS – HEADBOARDS – VALANCES

CUSHIONS – FABRICS – TRIMS – POLES

VENETIAN BLINDS

.....

Do call Viki Angela or Terri Oxley to arrange a free consultation

Tel: 01449 736807 / 01284 828263 M: 078269 30011

email: walnuttreedesigns@yahoo.com

Cockerells Hall, Buxhall, IP14 3DR

BILDESTON ELECTRICAL

Rewires, Extensions, Board Changes or New Installations

Any Alterations to Existing Installations

(lights, sockets, etc.)

Contact Ian

01449 743664 or 07754 723685

Decorator // Home Maintenance



Painting
Wallpapering
Tiling
Decking
Fencing
and more

Contact Pete Robins

Telephone : 01787 319731

Mobile : 07527 113525

S.C. PLASTERING SERVICES



**CALL SEAN FOR A
FREE QUOTE**

TEL: 01449 723264

OR 07773 706006

Courses in Natural and Traditional Building

Orchard Barn

**Rural Skills Development Centre
Far Ringshall, Mid Suffolk IP14 2LY**

01473-658193

www.orchardbarn.org.uk



Heritage Home Care and Repair Courses for home-owners and builders

**Traditional Carpentry, Timber Framing, Cob, Greenwood
IHBC CPD certificates on most courses**

**Practical building courses that don't cost you the earth, but teach
you how to work with the clay under your feet, the hazel from
the hedgerow, and coppiced trees from local woods.**

We are a small, friendly Ipswich based practice with projects mostly in East Anglia and London. We tailor our service to your needs. We have considerable professional experience designing advanced and complex buildings as well as small residential projects.

We Specialise in:

- Residential Design
- Loft Conversions & Extensions
- Commercial Design and Offices
 - Interior Design
- 3d Visualisations and Graphics

We can provide:

- Outline Design
- Planning Applications
- Building Regulations
- Construction Drawings

Contact us for a **FREE** quotation

www.marcharchitecture.co.uk

email: maria@marcharchitecture.co.uk

Tel: 01473 749 226 Mobile: 079 1213 9595

SUFFOLK CARPET CLEANERS

We'll get your
Carpet & Upholstery
fresh & clean.

* Stain Guard available
at extra cost.

For more information

Tel: 01449 741 550

Mob: 07586 921 610

Email: info@suffolkcarpetcleaners.co.uk

MANNING & WOODS LTD.

22 Stowmarket Road, Old Newton, Stowmarket, IP14 4EE



BUILDING CONTRACTORS
PROPERTY MAINTENANCE
SPECIALIST DECORATORS



Tel. 01449 673315

Email info@manningandwoods.co.uk

Website www.manningandwoods.co.uk

Manning & Woods Ltd. is formed by the merger of Mannings Ltd.
and Simon Woods Property Maintenance



CAR AND COMMERCIAL SERVICING



FREE LOAN VEHICLE WHEN AVAILABLE

BASE GARAGE LTD

Lower Farm Road, Great Bricett, Ipswich,
Suffolk, IP7 7DR

01473 657704 or 01473 658987

LANDSCAPING

Complete
Landscaping
Services

Considering a Block Pave
DRIVE – PATH – PATIO?
ADVANTAGES!
Looks good and increases
property value
NO MAINTENANCE

- PATIOS
- DECKING (all types)
- DRIVES (Brick – Block – Gravel)
- FENCING
- GATES
- PATHS



Call Chris Smith on 01449 740128 or 07904 334506

What is FOBS?

Friends of Bildeston Surgery

What do FOBS do?

FOBS was established to help patients of the surgery.

The help can be for equipment or services not provided by the NHS or other charities. All applications are treated individually and confidentially. However, there is an expectation that claimants will have tried to raise funds themselves. Monies will be paid directly to the provider of any equipment or services. Decisions on allocating monies are made by the FOBS Committee.

Want to know more?

Contact Janet 01449 740486, Mary 01449 740841,
or John 01473 831507

Friends of Bildeston Surgery (FOBS)

are now having their coffee morning at

HITCHAM VILLAGE HALL

14th July 2012

10am - 12noon

50p entry including a drink & biscuit

Stalls to include raffle, bric-a-brac, produce and books.

All welcome

June 2012

Church Services & Events in Bildeston

St Mary Magdalene

Bildeston w Wattisham Parish Church

For more information, contact Revd Barbara Stanton

Tel: 01449 744190 Email: b.stanton150@btinternet.com

3rd June	08:00	Holy Communion	Bildeston
Trinity Sunday	11:00	Jubilee Service	Bildeston
10th June	11:00	Morning Prayer	Bildeston
17th June	11:00	Parish Communion	Bildeston
24th June	11:00	Family Service	Bildeston
1st July	09:30	Holy Communion BCP with hymns	Bildeston
	11:00	Benefice Communion for St Patrick's Day, followed by £7.50 lunch including glass of wine Tel Rev Barbara 01449 744190 to book	Lindsey

For all services across the Benefice please refer to *Roundabout*,
available in St Mary Magdalene Church

Baptist Church, Duke Street, Bildeston

Paul Cousins tel: 01449 744360 email: paul.cousins268@btinternet.com

Service every Sunday morning at 10:45

Lunch Club: at 12:30 on the first Wednesday of each month
All are welcome

Community Coffee Centre: Every Friday from **09:15 to 11:30**

Enjoy meeting old and new friends at these events!



Bildeston Community Coffee Centre

Baptist Church 9:15-11:30 **Every Friday**

Bildeston Mother & Toddler Group

Baptist Church 9:45-11:45 **Every Tuesday**

Bildeston Community Cycling

Back on Your Bike Market Place 18:45 **Every Tuesday**

Judging Best Dressed House Competition

Village-wide 11:00 **Saturday 2nd**

Jubilee Lunch

Market Place 13:00 **Sunday 3rd**

Lighting of the Jubilee Beacon

Market Place 21:30 **Monday 4th**

Parish Council Meeting

Chamberlin Hall 19:30 **Monday 11th**

Bildeston Primary School

Summer Fete 11:00-14:00 **Saturday 30th**

More details on these events inside.

Tell us about July events!

01449 741541 / editor@bildestonbugle.co.uk



When you're finished with this Bugle please pass it on or recycle it.