



Bildeston Bugle

Issue number 258
APRIL 2012

The Village Magazine
produced for the people of
Bildeston

This issue was kindly sponsored by

*Eileen Burman
& Family*



BILDESTON BUGLE ADVERTISING AND FREE CONTRIBUTION INFORMATION

Our aim is to provide every resident in Bildeston with a newsletter which provides information of local interest *FREE OF CHARGE*. To that end we are required to be efficient in the space we use to print free notices.

We endeavour to include interesting titbits, announcements for events open to the general public for free and items of a charitable nature free of charge. Ongoing free announcements need to be reduced to minimum size or make a contribution towards printing costs. Always check with us before submitting your advert and **ALWAYS** provide us with all of your contact details.

Sponsor an issue – £15 per issue

includes a brief message on the cover of the magazine and at the top of the website

Advertising Rates

	1 issue	6 issues (15% disc)	12 issues (30% disc)	
1/4 page	£2.75	£14.00	£23.10	65mm W x 92mm H
1/2 page	£5.50	£28.05	£46.20	134mm W x 92mm H
full page	£11.00	£56.10	£92.40	134mm W x 190mm H

THE SMALL PRINT

Free contributions, adverts and payments are required by the 17th of the month for inclusion in the following month's issue.

Please make cheques payable to Bildeston Bugle and send to:

The Editor, Bildeston Bugle, 8 Manor Road, Bildeston, IP7 7BG

Receipts cannot be issued without your full postal address.

**If we do not receive payment by the 17th of the month
your advertisement will NOT be included**

The Bildeston Bugle Editorial Team are:

Daniel Newman (editor) – 8 Manor Rd, Bildeston IP7 7BG tel: 01449 741 541

Nancy Dales (treasurer) – 142 High St, Bildeston IP7 7EF tel: 01449 741 047

Alison Sims – 1 Squirrells Mill, Bildeston IP7 7DY tel: 01449 741 813

Tricia Baldwin – 13 Squirrells Mill, Bildeston IP7 7DY tel: 01449 741 227

Vic Ling – 5 Squirrells Mill, Bildeston IP7 7DY tel: 01449 744 574

CONTROVERSY, CONFUSION & FOOLS

As I'm sure you are all aware, much more so than I, the month of April brings with it the April Fool. The Bugle has a fine tradition of including April Fools, however, as a relative newcomer to the village and a timid sole at best, I feel that until I get a better understanding for the concerns and sensitivities of all Bildeston residents it would be inappropriate to include any April Fools items this year. This will hopefully ensure there is no unintended offence given or confusion created by the articles that we would like to bring to your attention.

There are some great articles this month which hopefully reflect the variety of interests within the village. If there is something that we haven't covered that you feel we should please let me know.

dn

Oh, and don't forget to visit the website for the latest news, some items that missed the print deadline(!), photos and more:

WWW.BILDESTONBUGLE.CO.UK

THEFT FROM VEHICLES

During the period 30 January 2012 to 10 March 2012, two vehicles parked in the village, have been broken into and tools stolen.

Please be aware of these incidents and take care that valuable items are not left in vehicles unattended.

Bildeston Parish Council

BILDESTON RANGERS

END OF SEASON FIXTURES

7/4/12

Home V Bacton United 87

14/4/12

Away V Sproughton Sports

21/4/12

Home V Sporting 87

28/4/12

Home V Halesworth Town

5/5/12

Away V Salvation Army

News From Bildeston Primary School

After the slightly warmer weather we were hoping for the sun to appear more often, especially for our Mother's Day Lunch, which was held on Thursday 15th March, and proved to be a great success. The dinner hall was crowded with people from 11:50am until 12:45pm. It was great fun for both children and adults alike. After a lot of eating and chatting all the mothers left us to do our work.

This term Key Stage 1 have been studying the farm after their slightly colder topic, snow and ice. Following this topic, they will be visiting Baylham Rare Breeds Farm where they can meet a Highland cow and feed him.

Key Stage 2 have been studying the Victorians this term. Continuing this topic, we are having a Victorian Maths week which includes preparing for a Victorian Market Day where parents can buy handmade gifts. Also we will be visiting Gressenhall Workhouse where we will be able to experience what it was like to live there. Year 6 wrote poems about the past to enter into a poetry competition. Most of year 6 got a certificate and are now officially published authors!

Finally every Friday in Mrs. Healy's assembly we watched a video about the London 2012 Olympics and discuss what we have seen. We find these assemblies educational and fun and are really looking forward to learning all about it next term.

By Amy Holdstock and Isabel Chaplin



**HEARING
CARE CENTRE**
Private, Independent, Local

Over 119,000 people in Suffolk alone have a hearing problem. **Book your FREE hearing test today!**

Hadleigh Hearing Care Open Days

(9am-5pm)

Mon 23rd & Tues 24th April 2012
The Health Centre, HADLEIGH

FREE BY APPOINTMENT ONLY

- Hearing tests
- Digital hearing aid demonstrations
- Clean & check of your existing hearing aid(s)*
- Refreshments
- Special offers (selected hearing aids)

*excluding NHS hearing aids

To book your appointment please call us on FREEPHONE:

0800 096 26 37



Karen Finch RHAD FSHAA FRSA



The Hearing Care Centre | 5 High Street, Ipswich, IP1 3JZ
Tel: 01473 230330 | Web: www.hearingcarecentre.co.uk

Down On The Farm

Would you like a tour of a local farm?

Residents of Bildeston are invited for a tour by tractor and trailer of Dairy Farm Semer at 6pm sometime between 11 June and 14 July 2012.

This is initial notice to gauge interest.

If you would like to accept this invitation, please contact the Parish Clerk at clerk@bildeston.suffolk.gov.uk or on 01449 740849 or at 3 Market Place, Bildeston IP7 7EN



SUFFOLK FRUIT & VEG DELIVERY SERVICE COMES TO BILDESTON

Here in Suffolk we have some of the best produce in the UK and a local initiative, Suffolk Farm Box, is now making weekly deliveries of seasonal fruit and vegetables to Bildeston.

Suffolk Farm Box buy produce directly from Suffolk farmers and distribute it in boxes to residents within the local area. Most of their produce is organic and because they buy directly from local farms, they can offer fresh, low cost produce that tastes great – you can even add local eggs and cheese to your order!

Sarah Levantis, founder of Suffolk Farm Box, created the company with the belief that everyone should be able to buy good value, quality local produce. Originally from Woolpit, Sarah has developed good relationships with local farmers to ensure that they can provide excellent quality vegetables, fruit and salads to local residents.

LOW COST LOCAL PRODUCE

Buying fresh produce from Suffolk Farm Box helps to:

- Keep food miles low
- Ensure great value – no excess packaging or premiums for organic food
- Support the local economy
- Eat seasonal food which is both tasty and nutritious.

Dan Fisher, Suffolk Farm Box partner, said “We’re passionate about food – it really is that simple. Suffolk Farm Box gives us a chance to share that passion with the local community. We enjoy sharing new ideas and recipes for old favourites as well as for veg that may be new to you. We want to hear from customers and, through our Twitter and Facebook accounts, we are fostering links with other Suffolk businesses and organisations.”

Based in Buxhall, they currently deliver to homes, schools, workplaces and clubs in Bildeston, Buxhall, Combs, Drinkstone, Elmswell, Finborough, Hadleigh, Harleston, Haughley, Hitcham, Norton, Onehouse, Rattlesden, Woolpit, Shelland, Stowmarket and Wetherden.

For more information call 01449 737867 or visit www.suffolkfarmbox.com. You can also send an email to Dan Fisher: dan.fisher@suffolkfarmbox.com or Lucy Barber: lucy.barber@suffolkfarmbox.com

BILDESTON COMMUNITY CYCLING

WHY NOT JOIN BILDESTON'S VERY OWN

‘BACK ON YOUR BIKE’ RIDES

EVERY TUESDAY FROM 24 APRIL ONWARDS
AT 6.45pm FROM THE MARKET PLACE.

This year we've got two ride groups. **A REGULAR ride for more experienced riders**, of about 14-15 miles, and **a SLOW ride of about 8-9 miles for those who would like to cycle at a more gentle speed**, for about an hour; no experience necessary; walking up hills allowed!

No-one ever left behind. Rides are mainly on quiet lanes. Helmet recommended. Regret no children under 12 on Regular ride, or under 10 on Slow ride; no unaccompanied children under 16.

JUST TURN UP; or for more information, contact Robin Weaver 741048, Rob Sidgwick 740404, or Robin Taylor 740780.

BILDESTON'S ANNUAL LITTER-PICK

SATURDAY 7TH APRIL

MEET AT 10A.M. ON THE MARKET SQUARE

Yes, it's that time of year again and as Spring is well on the way it's time to think about our annual village Spring-clean.

Volunteers are needed to help with clearing our pavements and paths as well as roadsides surrounding the village. If you are new to Bildeston why not come along and join in with our efforts. There has been a lot of publicity recently about such initiatives – here in Bildeston we have been doing our annual clear up for over 20 years so let's keep up the good work.

LITTER-PICKERS & BAGS PROVIDED.
ALSO SOME GLOVES, BUT BRING YOUR OWN IF YOU LIKE.
ACCOMPANIED CHILDREN WELCOME.

If you can offer to help please contact Robin (740404) or Jo (740504), especially if you want to book a favourite stretch to clear, or just come along on the day.

Thanks in anticipation, Robin Sidgwick & Jo Silburn

ST MARY MAGDALENE CHURCH, BILDESTON W WATTISHAM

ANNUAL MEETING OF PARISHIONERS ON THURSDAY, 12TH APRIL 2012

TO BE HELD IN THE CHURCH AT 7.30PM

AGENDA: ELECTION OF TWO CHURCHWARDENS

All persons whose names are entered on the church electoral roll of the parish and all persons resident in the parish whose names are entered on a register of local government electors by reason of such residence are entitled to attend and vote at the meeting. This will be followed by the Annual Parochial Church Meeting.

All persons whose names are entered upon the church electoral roll of the parish (and such persons only) are entitled to vote at the election of parochial representatives of the laity.

The Big Jubilee Lunch

2012



Jubilee Lunch on the Square
Room For All The Village
Bring and Share Your Food
Fancy Dress Competition
Jubilee Gift for the Children
Best Dressed House Competition
Games, Music and LOTS of Chat!

Celebrate the Diamond Jubilee

with a Big Lunch on 3rd June 2012

If you would like to join in, help or have any ideas or photos from past celebrations, contact the Jubilee Working Group: Betty Robinson, Paul & Sue Cousins, Jo Cartwright, Ros Cohen, Elaine Talbot, Diane Drury, Nicola Fenzl, Jim & Elaine Haley, Anthony Yannaghas, Clare Suddaby, and Cath Anderson

**More details in next month's Bugle and look for posters
at Bank House Stores**

Ashley Hubbard Driving Tuition



Patient, experienced, fully qualified ADI DSA Driving Instructor.

Learner – Advanced – Refresher

Theory Test & Pass Plus Tuition

Competitive rates, door to door service in
Bildeston, Hadleigh, Stowmarket, Needham & Ipswich areas.

T: 01449 740633 or M: 07901 563281

E: ashley.hubbard@btinternet.com

Beat rising fuel bills
Stop energy loss
Use 'Green Deal' money



'Green Deal' is a government incentive to fund home energy efficiency with no up front cost to you.

Solar investments still return over 10%
30% price drop on our Solar Panels.

Talk to us! We are local certified Solar Energy Specialists eager to give you **free** advice and survey.

Call Now: **01284 706 586**
or visit **www.ambervert.eu**

TIM'S TITLE TATTLE

The monthly bombardment of the Bugle by the Traffic Calming Brigade seems, at last, to have run out of momentum so perhaps now is the time to think sensibly about this matter. I, personally, am rather doubtful that the problem is as great as we are led to believe and think that suggestions that ladies will have their handbags ripped from their arms by speeding lorries or that children will be mown down by selfish drivers are not particularly constructive. Having lived on the High Street for 54 years I know of nobody being injured in the High Street nor have I experienced undue vibration to my property by passing traffic. I fail to see why this should change in the next 50 years. Robert has stated that some reality should be injected into the discussion, and I really do wholeheartedly agree with him.

The relentless mass of statistics and so called facts are not only quite obsessive but also pretty meaningless to most of us. Technical issues such as mph and stopping distances are not hugely interesting. Likewise, I'm pretty unimpressed with surveys – I wasn't "surveyed" (now, I wonder why?) and I only know one person who was. So, if you ask the 480 who were consulted if they have any idea how this scheme would be funded, or even more pertinently, if they would be prepared to foot the bill themselves, this number of 480 would probably be reduced to the number of thumbs on my right hand. That, I think, is reality!

I am not too concerned about the outcome of this campaign: the Parish Council will make the final decision. I have faith that, as usual, sanity will prevail and they will spend our money wisely: they have been doing just that for a very long time so why change? That's reality!

If, however, I am wrong and they opt for a 20mph speed limit, may I politely request that they pass an exemption, not just for me, but for all pensioners because I do find lately that I am obliged to increase my speed each month or so for fear of forgetting where I am going before I am halfway there... and no, this is not an April Fool – so it must be reality!

TIM, APRIL 1ST 2012



BANK HOUSE STORES

Richard & Joan
O'Sullivan



telephone
01449 740403

WELL DONE CHAPS!

Congratulations on another successful panto. We should all be proud to live in a village with so much talent and with people willing to give up so much of their time to entertain us. Looking forward to B Natural.

**Save money with our genuine offers from
26th March until 14th April, including:**

Pringles Big Packs: HALF PRICE	ONLY £1.32
Andrex Toilet Tissue: 4-pack	ONLY £1.89
Thirst Pockets Kitchen Roll: HALF PRICE	ONLY £1.13
Nescafé: 100g	ONLY £2.25
Whole Fresh British Chicken 1.35kg	ONLY £3.50
Cathedral City Cheddar: 200g	ONLY £2.00
Smirnoff Vodka/ Pimm's: 70cl bottles	ONLY £12.50
Casillero del Diablo Chilean Wines	ONLY £5.50
Isla Negra Chilean Wines	ONLY £4.50
Foster's Gold: 15 bottle pack	ONLY £10

PLUS many, many more. Come in and pick up a leaflet.

We are also featuring some amazing savings on Londis fruit and vegetables, with many packs at just £1.

We are open from 7am to 6.30 pm Monday to Saturday and 8.00 to 12.00 every Sunday and Bank Holidays. The Post Office service is available during ALL opening times – that's 73 hours every week!

The Health Lottery is now available – We are open every day over Easter

Shop Locally – You Need A Jolly Good Reason Not To!

BILDESTON COMMUNITY CYCLING

Bildeston Community Cycling was formed in early 2009, with the intention of getting more people in Bildeston riding bikes.

In 2011, nineteen rides were held through the summer, with an average of 10 riders. The rides used quiet lanes wherever possible. The year started with two rider groups, a Slow group doing 8 or 9 miles, the Regular group doing 14 or 15 miles. The longer distance group covered a total of 304 miles over the summer, the shorter distance group 200 miles. A 25 mile Challenge ride was also run from the Sportsfield in July, in conjunction with Cycle Club Sudbury, who were organising other longer distance rides on the same day. A total of £200 was donated to local Hospices.

Monthly 25 mile 'Winter Warmer' Saturday morning rides with a cafe stop have also been held through the winter, with rider numbers varying depending on the weather, and averaging 7.

The Tuesday rides this year will start in April. Keep an eye open for adverts in The Bugle. There will again be two groups of riders, both starting at 6.45pm from the Market Place; a Slow ride, starting at about 8 miles, slightly shorter than last year, and a Regular ride of 12 -15 miles for more confident riders. The Slow ride will cater for riders who want to go a shorter distance, and will go at a slower speed. Walking on hills is allowed!

If you used to cycle, or want to start, why not join us this year? Just turn up; the first Tuesday evening ride will be on 24 April, at 6.45pm from the Market Place.

Reader's Letter: A Sincere Thank You

Dear Sir,

May I kindly ask to use the pages of 'The Bugle' to draw your attention to a small act of public spiritedness?

I think the residents of the village owe a sincere 'thank you' to a very public minded lady named Prudie, for her hard work in collecting litter and rubbish daily in the vicinity of Consent Lane, Church Road and the various walks near by.

This beautiful area is plagued by the littering habits of a few thoughtless people and is routinely tidied up by Prudie.

We all owe her our thanks,

Yours faithfully,
Tim Walker

A P & R I LIST

TRAFFIC MANAGEMENT SOLUTIONS

As you probably know, there are traffic concerns regarding the speed of vehicles in Bildeston, and the Parish Council are looking at options to address the problem.

As a National Company, we have been asked to look at alternative solutions, and have put forward a plan which we think will solve the problem at a minimum expense. It will also help various business's in the village and make 'speed watch' unnecessary.

The plan will involve volunteers, wearing yellow jackets and carrying red flags, positioned on roads leading into the village, who would escort any vehicles entering the village to pass through. This would keep speed down to a minimum, making Bildeston probably the safest village in England. (Jackets to be transferred from speedwatch and red flags purchased with money from sale of speedguns).

Local business's could benefit, for example; Bank House Stores could take telephone orders which could be collected as vehicles drove slowly past shop, which saves parking and entering the shop! A major fast food chain has expressed an interest in establishing a drive-through which will result in more employment in village.

If these proposals are agreeable, would those wishing to volunteer please telephone: 01042012

Please Note: anyone with a mobility scooter/zimmer frame will not be allowed to volunteer as they would probably travel too fast to be a safe escort.

Reader's Letter: Standards seem to be slipping all round!

Dear Editor,

I completely agree with the need for dog owners (or anyone else who has the inclination) to pick up after the dog has relieved itself. Wouldn't it be good if the same Legislation could apply to cats who seem to have the freedom to trespass my garden and leave their slimy faeces on my lawn or on my newly hoed flower beds. Goodness knows what they feed on – apart from the odd bird. In my day cats used to dig a hole and bury the stuff. Standards seem to be slipping all round!

Colin.
Resident,
Bildeston



We've already started planning this year's festival, but first we've got some celebrating to do...

B NATURALists,
Friends of B NATURAL
and all-comers
are invited to our
AGM

The King's Head
Monday 16th April
7.30pm

There'll be a bit of business,
a lot of pleasure, and – of course! –
music!

This year's B Natural will
be on Saturday and Sunday,
8th and 9th September.



Email us on
info@bnatural.bildeston.org
www.bnatural.bildeston.org



BARGEWELL SKIP HIRE

- 2, 3, 4 & 6 Yard Skips
- Long or short term hire
- Delivery service 7 days a week
- Fast friendly service

Stowmarket
01449 615056

Mobile 07770 452378
High Rd, Gt Finborough, Suffolk

BILDESTON WILDLIFE WATCH – PART II

I never appreciated just how enthusiastic Bildeston villagers were about our local wildlife. I should have known being as I live here too, and we are, after all, country Suffolk folk, steeped in the country lore and ways; steeped in the traditions handed down by our fore bears and other fore animals. My own great grandmother's words still ring true and are a great help to me even now, for example:

- › Never slap a man who's chewing tobacco!
- › Love your enemies, it makes them really, really annoyed!
- › See a pin and pick it up, all day long you'll have good luck, but if it's low and quite a risk, don't bend down, beware slipped disc.
- › It's going to rain when the cows lie down, so hurry and seek shelter in the town, but don't bother walking to Hadleigh, you'll most likely drown!
- › Spill salt for sorrow, spill sugar for joy
- › Hawthorn bloom and elder flowers, fill the house with evil powers. If you put them in the kitchen, best begone and live in Hitcham!

She was a wonderful lady who, well into her nineties during the war, used to look up in the sky and hurl dreadful abuse and curses at the Luftwaffe on their way to bomb London. Luckily for them, they were flying too high and most of them missed.

But returning to the point, we have to say we were quite taken aback by the response to the 'squirrels' article in the March issue. The editor contacted me in breathless, excited tones, which is quite a feat in an email! "Get over to the purpose built Bugle office, editorial emporium and rolling printing press (my shed!) ... we desperately need your help. We've had an absolutely amazing, incredible, unheard of, overwhelming response to the article."

So I read the letter. It was full of interesting questions seeking further knowledge on the subject. Following extensive research, I think it's best to provide the answers taking each question in order.

1. Yes, but only by a fully qualified taxidermist wearing suitable clothing.
2. Only on the weekends, and you'll know because the curtains stay shut.
3. You can only tell if you look from behind. Or from underneath, which is tricky.
4. Yes, some have very large ones.
5. Maybe, but you wouldn't want an ugly one, would you?
6. This has proved difficult, although a farmer in Australia tried with a kangaroo to get an animal that keeps its nuts in its pockets.
7. No. I don't feel that's what you should use Neighbourhood Watch for!

Well I hoped that's cleared things up. Keep that letter flocking in!

Bildeston Bowls Green Draw Results

Draw No 11 – February 2012

1st Prize £50

Winner: Adam Chinery

2nd Prize £10

Winner: Jim Brown

3rd Prize £5

Winner: Michael Rose

To join the Monthly Draw
telephone Adrian 01449 741253

The Harmany Roadshow Mobile Disco Music For All Occasions

Call Now For A Quote

Chris
01449 740020 or 07979 385622

Leigh
07876 355412

The_Harmany_Roadshow@hotmail.co.uk

Angel Delights

Outside Caterer & Specialised Confectioner

Weddings – Christenings – Funerals
Birthday Parties – Dinner Parties
Barbecues

CAKES FOR ALL OCCASIONS

Contact Helen
01473 82857 or 07900 900329
info@angel-delights.com
www.angel-delights.com

Bildeston Ladies Club

The Bildeston Ladies Club meet
monthly and do something
different every month.

All ladies are welcome.
For newcomers to the village it is a
great opportunity to meet people
and make friends.

The next gathering will be at Chamberlin
Hall on Thursday 5th April at 19:45 for
Card Making with Una Johncock.

We look forward
to seeing you.

Heating Oil – Order just enough!



OUR NEW
MICRO-TANKER

Worried about Theft ?

Smaller Budget ?

Renting/Moving ?

Run out/Restart ?

100 OR 200 OR 300 litres

(BESPOKE DELIVERIES UP TO 800 LITRES ONLY BY SPECIAL ARRANGEMENT)

Serving villages around **SUDBURY & HADLEIGH**

(BESPOKE DELIVERIES FURTHER AFIELD ONLY BY SPECIAL ARRANGEMENT)

30 years LOCAL oil delivery experience

money in the bank, not in the tank!



badgerfuels@hotmail.co.uk

Badger Fuels Ltd



Smaller
Delivery

Extra
Care

Quick
Response

0758 269 1111

Debit card OR Cash on delivery OR Credit card (+2%) SORRY – NO CREDIT

Badger Fuels Ltd – Your SMALL delivery specialist!

Vintage Parties

*'Quintessentially
English'*

Hope & Glorious Vintage can cater for any special occasion, from a wedding to a picnic in true English vintage style.

We believe that whatever vintage event you decide to hold you should have the most beautiful crockery and accessories, we offer a wide range of crockery from gorgeous mismatched cups & saucers to beautiful co-ordinating wedding sets and accessories to make any event unique.

Vintage themed parties perfect for;

- **Romantic cream tea's on the beach, in the countryside or by a river**
- **Celebrating a birthday, Graduation or sweet 16 party**
- **Weddings, anniversaries, christenings, Hen and engagement parties**

In fact a vintage touch can be applied to make any occasion unique and create that wow factor for your friends and family.

We know putting these events together can be stressful so we also offer a set up and clear down service and we will even do the washing up!



Call us on 01449 7411943
Email: info@hopeandgloriousvintage.co.uk
www.hopeandgloriousvintage.co.uk

CHAPS CINDERELLA

Fifteen tickets bought, then delivered to fellow Squirrels and we were off up the hill for a treat of Saturday Night's performance.

Two new directors in Heather Fawley and Lesley Woods-Gould had made a great job with the cast. The costumes, songs and scenery were super.

Drinks bought and seats found, stage hands to the ready, curtain up and the story began with the appearance of The Fairy (Godmother) Kate Mackintosh. Fireworks too on stage.

Then of course it wouldn't be CHAPS without Adrian Chinery although he wasn't a Dame this year but a 'Billy Bunter' style Buttons still as comic as ever. Colin Bartrum must have a special mention in my book, he was superb as Barron Hardup. Also Dandini Janet Mackie had some good lines and songs. Having said that everyone deserves credit for their performances. They all seemed to be enjoying themselves too.

Our local talented duo, Georgie Fawley Cinders and Nic Keeble, her Prince Charming complete with his guitar – made a great couple throughout and that Adele number Georgie was fantastic! Our seasoned actresses Ugly Sisters Linda Underwood and Christine Hubbard, were modern and OTT in their colourful costumes, tights and wigs. Their mother, the screaming Rubella Disease had fantastic gowns and made a super villain with her minder Dave Dave Pigogtt, who loomed over her to protect her.

Two young lads Rhys Linge and William Pratt doubled their parts as the village Horse and Footmen. Stars in the making.

Two squeaky mice, Rachel Chinery and Rebecca Fox, and the most cutest little fairy you have ever seen who threw herself into the role with gusto, were a small part of the Dance School who gave great musicality to the stage. Definitely stars of the future there for the growing CHAPS cast.

Audience participation abounded and clapping, whistles and booing was the order of the night. The script was topical and local as per usual 'Squirrels' and the outlying villages got a mention from Adrian!

The night ended with a splendid buffet arranged by Lyn Chinery and June Taylor.

The whole evening fled by and we can't wait for more performances from CHAPS later in the year.

Well done one and all – especially those I haven't mentioned!



Libra Hypnotherapy

Body and Mind in Balance

Gill Harvey Dip. Hyp CS (LHS)

Hypnotherapy can help with a large number of emotional, psychological, habitual and psychological problems and conditions such as:

- stress and low self esteem
- anxiety & exam nerves
- weight control & smoking
- relationship issues
- habits (such as nail biting)
- phobias & sleep problems

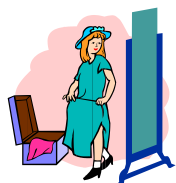
To find out more about how hypnotherapy might help you, or to arrange for a full consultation at my practice in Bildeston, contact me by telephone or via my website.

Tel: 01449 741096

Mob: 07876 506096

www.librahypnotherapy.co.uk

Member of the
Hypnotherapy Society



'SPRING/SUMMER WARDROBE'

Second-hand clothing sale
on **Monday 30th April**
at **11 Squirrells Mill, Bildeston**
at **10 – 1pm**

Bring your friends!

Hosted by Barbara Williams - 740220

Contact Anne 01284 828643
for collection of all age clothing
all donations greatly appreciated.

In aid of St Mary Magdalene Church, Bildeston

STOWMARKET AGGREGATES

Cheapest Prices in Stowmarket

- **Digger & Lorry Hire**
- **Site Clearing**
- **Grab Hire**
- **Top Soil**
- **Earth Moving**
- **Sand & Gravel**
- **Bagged or Loose**
- **Same Day Delivery**

97 Finborough Road, Stowmarket

TEL: 01449 613524

or

07850 450770



KINGS HEAD & Brewery

Nigel, Susie, Ryan and Freya look forward to welcoming you to the Kings Head.

- Here's our **free live music** for April: every Wednesday is **Open Mic Night** from **8:30pm**; from **1pm on Sunday 22nd** **Kevin Nightingale** will be playing contemporary classical solo acoustic guitar; and from **9pm on Saturday 28th** we have the excellent acoustic duo **This Way Up**.
- Our monthly **charity quiz night** is on **Thursday 26th April** at 8:30pm. Telephone Sue or Nigel on 01449 741 434. Thanks to Febs teams who raised £85 for Cancer Research.
- Our good value homemade food uses quality ingredients that are locally sourced where possible. We are well known for tasty beer-battered fish & chips, delicious boozy beef pie (red poll beef supplied by Brook Farm, Brent Eleigh) and our freshly prepared traditional Sunday roasts. Meals are cooked to order and available to eat-in or take-away. To reserve a table please phone Sue or Nigel on 01449 741434.
- We brew our own real ales on-site (tours by arrangement) with at least one other from a local independent brewer.
- Our opening times are as follows:

Wednesday	Open 6pm-12am (open mic/buskin night)
Thursday	Open 6pm-11pm (bar games night)
Friday	Open 4pm-12am (full menu 6-9pm)
Saturday	Open 12pm-12am (full menu 12-2pm & 6-9pm)
Sunday	Open 12pm-10:30pm (roast & full menu 12-3pm)
Monday/Tuesday	Closed (except bank holidays)

Paul's Carpentry

Property Maintenance

*All Carpentry & Painting projects
considered large or small
Internal or External*

Tel: 01449 616888
Mobile: 0779 2340365
email: paulhb@btinternet.com
www.carpentersinsuffolk.co.uk

LANDSCAPING

*Complete
Landscaping
Services*

**Considering a Block Pave
DRIVE – PATH – PATIO?
ADVANTAGES!
Looks good and increases
property value
NO MAINTENANCE**

- PATIOS
- DECKING (all types)
- DRIVES (Brick – Block – Gravel)
- FENCING
- GATES
- PATHS



Call Chris Smith on 01449 740128 or 07904 334506

TOWN | COUNTRY | EQUESTRIAN



Emmerson Dutton



Kirsty Dutton



Rachel Lapworth

Bury St Edmunds, Suffolk
T: 01284 749 433

duttons.uk.com

Duttons
Estate Agents

PROPOSED SKATE PARK IN BILDESTON CALLING ALL 11 > TEENS (OR YOUNGER!)

WE ARE A GROUP OF BILDESTON PARENTS WORKING WITH THE PARISH COUNCIL TO EXPLORE THE VIABILITY OF A SKATE/BMX FACILITY IN BILDESTON AT THE WATTISHAM ROAD SITE. THERE IS A POSSIBILITY THAT FUNDS MAY BE AVAILABLE ALREADY.

THE FIRST STEP IS TO FIND OUT HOW MUCH APPEAL THE IDEA HAS AND HOW WELL USED SUCH A SITE WOULD BE. FOR THIS BIT WE NEED YOUR HELP.

IF YOU THINK YOU WOULD ENJOY USING A SKATE AREA. PLEASE FILL IN. CUT OUT AND DELIVER THE FORM ON THE OPPOSITE PAGE. PLEASE MAKE EXTRA COPIES FOR YOUR FRIENDS IN NEARBY AREAS. ALL MEMBERS OF THE SAME FAMILY CAN GO ON ONE FORM.

WE THINK IT WOULD BE A FANTASTIC AND WELL USED ADDITION TO THE VILLAGE BUT OUR VIEW IS NOT ENOUGH. WE NEED YOUR HELP TO PROVE IT!

PROPOSED SKATE PARK IN BILDESTON REGISTER YOUR INTEREST TO MAKE IT HAPPEN!

NAMES (OPTIONAL)

AGES

NO. OF FEMALES/MALES

VILLAGE/LOCALITY

TICK ANY / ALL OF THE USES YOU WOULD HAVE OF THE SITE:

☐ SCOOTER ☐ SKATEBOARD ☐ SKATES ☐ BMX

PLEASE DELIVER TO ONE OF THESE ADDRESSES BY THURSDAY APRIL 12TH:

7 NEWBERRY ROAD / 12 HIGH STREET, BILDESTON / 133 HIGH STREET, BILDESTON

ANY QUESTIONS PLEASE RING 741031 / 740112 / 741961



BILDESTON PARISH COUNCIL

Minutes of the meeting of Bildeston Parish Council
held on 12th February 2012 in Chamberlin Hall at 19:30

In attendance:

Councillors:

R Lester (Chairman), A Guttridge (Vice-Chairman)

J Cartwright, P Cousins, Cllr R Taylor, R Lindsay, N Tye

Cllr D Keane (BDC)

Cllr J Pembroke (SCC)

Paula Gladwell RFO (Acting Clerk)

There were ten members of the public present



C172/11/12 CHAIRMAN'S WELCOME

The Chairman welcomed Members and the Public to the meeting and brought forward item 14b

C173/11/12 APOLOGIES FOR ABSENCE

Apologies for absence had been received from Cllr D Dempsey, Cllr D Drury, V J Allard and PCSO Jamie Fudge

C174/11/12 DECLARATIONS OF INTEREST

Cllr Guttridge declared that he was an officer of Suffolk County Council.

C175/11/12 TO APPROVE THE MINUTES OF PREVIOUS MEETING

The minutes of the meeting held 13 February 2012 were confirmed and signed as a correct record. Proposed Cllr Tye, Sec. Cllr Cousins, with all in favour.

C176/11/12 POLICE REPORT

The Chairman read the police report. There had been 3 crimes reported, 2 x Motor Theft and 1 x Criminal Damage with no suspects for any. The Motor theft had been of items from within the vehicle. It was suggested that an article be drafted for the Bugle to make people aware of the recent thefts. Cllr Tye will attend the next SNT Area meeting and enquire if this is a local issue or more widespread.

C177/11/12 SUFFOLK COUNTY COUNCIL

Cllr Pembroke's report was deferred.

C178/11/12 BABERGH DISTRICT COUNCIL

Cllr Keane reported that work on the integration with Mid Suffolk continues. The CEO has

been appointed and the process to put in place a full management team is taking place.

C179/11/12 Modernising the Structure of the Police force and getting more Constables MR JOHN GLEED

Mr Gleed gave an insight into the proposals he and his group have to merge Suffolk, Essex and Cambs police forces with the suggestion that this will save money. He confirmed that he was attending parish council meetings to raise awareness and gather support. He put forward a request that if the parish council agree with his proposal and suggestions that they write to the EADT to show their support.

Item 14b brought forward

C180/11/12 PROJECTS FOR S106 FUNDING

Following a brief background to Section 106 funding by the chairman a proposal was put to the parish council from a group of residents requesting the provision of a skate park at the Wattisham Road playground if funding was available.

Council agreed that this area should be developed and targeted towards the 11 – 16 yrs age group. It was confirmed that some work had already been done at the site but council are seeking input from the community for further facilities and would like to work with a group to develop this area.

Cllr Taylor suggested that the portable skate equipment provided by Babergh DC should be requested in an attempt to encourage people to get involved in the provision of a permanent facility.

It was agreed that Cllrs Lester, Cartwright and Taylor form a working group with the interested residents to take this project forward. It was suggested that a start be made by engaging the public to find out what is wanted and where the support is.

Item 10 brought forward

C181/11/12 CHAMBERLIN HALL ADVENTURE PLAYGROUND

It was brought to the council's attention that a new committee was taking the adventure playground forward with enthusiastic input into a proposal to improve and regenerate the area. A request was made for a donation of £200 towards the provision of a new picnic bench. It was resolved that a picnic bench be purchased and donated to the Adventure Playground. Proposed Cllr Guttridge, sec Cllr Taylor, with all in favour.

C182/11/12 SUFFOLK COUNTY COUNCIL

Cllr Pembroke reported that he was very proud the SCC have put in place a zero increase in council tax and saved addition funds over and above the budget savings but there are still concerns that there will be future cuts by the government.

There is a 3yr programme to improve broadband in Suffolk and Cllr Pembroke urged everyone to sign up to the campaign as the more support gathered the better the results.

Item 16b brought forward

C183/11/12 ROAD SAFETY – PUBLIC MEETING

A public meeting is proposed for mid May. It was agreed that an article be put in the Bugle as soon as SCC had agreed to a date that they could attend. Some detail of the proposals will be added to the website and the working group would meet again to firm up the arrangements.

C184/11/12 FINANCE**Grass Cutting Contract**

The current contract for grass cutting had been tendered up to 2011/12 and confirmation was now needed of the rate for 2012/13. It was resolved to delegate responsibility to the chair and vice chair to negotiate an acceptable increase.

Fund Reporting

It was agreed that an extra column be added to the payments list to record the fund each payment comes from. Ideally the fund will be agreed at the time of approval of the expenditure and the payment list will act as confirmation and failsafe.

Accounts Software

It was agreed that if Cllrs had any problems with understanding the current reporting of the accounts to inform the RFO so that these could be addressed and the reports made more user friendly. If this did not resolve concerns then consideration of the purchase of software would be revisited.

Internal Audit

It was resolved to appoint Salc to carry out the internal audit for 2011/12. The Terms of Engagement and Audit Plan were approved.

To Approve Payments

The following payments were approved. Proposed Cllr Tye, Sec Cllr Cousins with all in favour.

Payee/Service	Cheque No.	Amount
SCC Crossing Point Wattisham Road C168/11/12	101371	£438.94
Suffolk Acre Subscription	101372	£25.00
Babergh DC Election Costs	101373	£88.77
Clerk Salary & Exp Feb	101374	£248.96
RFO Salary Feb	101375	£96.50
Bugle Editor Salary Feb	1042012	£6400.00

C185/11/12 CL74 MILL LANE

This area was confirmed as Common Land with no parish council ownership. It was agreed to write to the resident concerned outlining this conclusion. It was agreed that if the residents concerned about the overhanging trees wished to take action to resolve this the parish council had no objections but would advise to bear in mind that conservation area consent may be needed for any work to the trees.

Cllr Cousin suggested that some sort of enhancement be made to the whole of the Mill Lane for the people who walk there suggesting that the parish council become custodians of the lane. The clerk was asked to investigate how this may be achieved.

Cllr Cousin was tasked with drafting a proposal for the area in consultation with residents.

C186/11/12 CHAMBERLAIN HALL STORAGE

Cllr Guttridge reported that the specification for the storage provision was complete and it was agreed to invite quotes for the work.

C187/11/12 HEDGEROW MAINTENANCE

A decision on the provision of routine maintenance was deferred

C188/11/12 MATTERS ARISING/CARRIED FORWARD FROM PREVIOUS MEETINGS**Signage for King's Pightle**

Further discussion deferred.

Section 106 Funding

Addition discussion - Cllr Taylor put forward details of a project for Kings Pightle requesting parish council support for a project on the scale indicated. It was suggested that if Section 106 funding was not available then perhaps John Artiss (public Amenity) fund could be used in order to leverage outside funding. It was resolved to support the proposal.

Request for Funding

The Chamberlain Hall Committee put forward a request for the parish council to purchase and deliver a commercial dishwasher for the hall kitchen with installation carried out by the committee. It was resolved to purchase a dishwasher at a cost of £1,705 (Chamberlain Hall fund) Proposed Cllr Tye, sec Cllr Cartwright with all in favour.

Rotherham Road/Smock Meadow Footpath

It was confirmed that there is no registered owner of the footpath. The developers have indicated their willingness to contribute half the funding suggesting that they take some responsibility. It was agreed that a letter be sent to them outlining the safety responsibility and asking for the repairs to be carried out and paid for in full by themselves.

Queens Diamond Jubilee

The working group reported that the plan is to hold a big lunch on Sunday with mementoes for children, a beacon and fireworks. The RFO will contact the insurance company to ensure cover is sufficient. It was resolved to budget £1000 towards this event. Proposed Cllr Cousins with all in favour.

C189/11/12 PLANNING MATTERS

The following applications were considered with decisions to be forwarded to MSDC

Planning appendix A

Application Number:	B/12/00192
Location:	Bildeston Health Centre, High Street
Proposal:	Felling of 1 no. Norway Spruce tree to ground level and felling of 1 no. Pine tree.
Decision	No Objection

Application Number:	B/12/00259
Location:	The Laurels, 18 High Street
Proposal:	Fell 1 no. Lawson Cypress tree and prune/top out 1 no. Silver Birch tree.
Decision	No Objection

Application Number:	B/12/00222
Location:	1 Duke Street
Proposal:	Listed Building Consent – Proposal internal alterations at first floor level, and alterations to existing ground floor bathroom.
Decision	No Objection

The following decisions were noted.

Planning Appendix B Decided by Babergh District Council

Application Number:	B/12/00042
Location:	Bildeston Health Centre, High Street
Proposal:	Crown lift 1 no. Beech tree (T5) up to 2.5m above ground level and reduce limb growing closest to lamp post by 1.5m. Crown reduce 1 no. Acacia tree (T10) by up to 25%.
Decision	GRANTED

C190/11/12 ROAD SAFETY

Community Speed watch (CSW)

Nothing new to report

Dealt with at C183/11/12

C191/11/12 MATTERS TO BE BROUGHT TO THE ATTENTION OF THE COUNCIL

- The drain in the garages at Brooksfield is blocked and flooding.
- It was suggested that the councillors pictures and profiles needed updating on the website.
- Streetlights 3 x low-level bollards on Paddocks Way are in need of replacement. Agreed to replace with one high level post. (Asset replacement fund) Quote £900 plus £600 installation. Cllr Taylor to arrange order.

The meeting closed at 10.pm

The next meeting of the Parish Council is scheduled to be held on 16 April 2012

Editorial Submissions

We receive some great editorial here at the Bugle and welcome reader input and feedback. If there are any topics that you would like to see covered please get in touch and let us know. Likewise, if you would like to submit a letter or some editorial for publication please ensure that it is sent as text via email to editor@bildestonbugle.co.uk

HONEY BEE'S NURSERY

Hitcham Village Hall
The Causeway, Hitcham

For children aged 2—5 years old
High adult : child ratio
Qualified and Experienced Staff

2 Indoor Rooms and Large Outdoor Area

Opening Times

Monday, Wednesday & Friday 9.15a.m.—12.15p.m. or 3.15p.m.
Tuesday & Thursday 9.15a.m.—12.15p.m.
Early Drop off of 8.30a.m. available
Lunch Club available each day until 1.15p.m.
Rate is £2.50 per hour (long day £15.00)

Ofsted Registered

Early Years Funding accepted for all 3 & 4 year olds
2 year old funding may be available

Awarded the Suffolk Quality Assurance Kitemark

Come along for a visit during any session, no appointment necessary or ring for more details and a prospectus
Contact: Mrs Sharon Scarfe 01449 740764 (village hall)
01449 740581 (home)

CHIMNEY SWEEP

ECO SWEEP CHIMNEY SERVICES

- NEW POWER SWEEPING METHOD USED FOR A MORE THOROUGH CHIMNEY CLEAN THAN BRUSHES.
- INDUSTRIAL HEPA FILTERED VACUUM.
- FULLY INSURED.
- INSURANCE RECOGNIZED CERTIFICATES ISSUED.
- SPOTLESS, RELIABLE AND FRIENDLY SERVICE.
- ALL CHIMNEYS, WOOD BURNERS, AGA, BOILER FLUES SWEEP.
- GUILD OF MASTER SWEEPS CERTIFICATED MEMBER.



TEL. 01359 232335

Walkies...

Friendly & Reliable Local Dog Walker

Individual or Group Walks

One or Two Hour Walks

Daycare

Dog Sitting

For more information please call Kim on 07545 877992

Decorator // Home Maintenance



Painting
Wallpapering
Tiling
Decking
Fencing
and more

Contact **Pete Robins**

Telephone : 01787 319731

Mobile : 07527 113525

Simon Nicole Gardening Services & General Maintenance

Planting
Grass Cutting
Hedge Management
Tree & Shrub Pruning
Garden Waste Removal
General Tidying Up/Weeding

For a friendly confidential service & advice

CONTACT

Simon

07526 265713

nicolesimon@hotmail.co.uk
Simon Nicole, Thorpe Morieux, Suffolk

Helping Hands



We are always here to lend a hand
No job too small



Just give us a call
Monday – Friday
9am-5pm

01449 741491 / 744360

The Bildeston 'Good Neighbour' Scheme
Run by the community for the community
Volunteers required, please
give us a call if you can help!

S.C. PLASTERING SERVICES



CALL SEAN FOR A
FREE QUOTE

TEL: 01449 723264
OR 07773 706006

COUSINS & SON BILDESTON LTD

available to carry out all your building requirements

from

Renovations / Alterations / Extensions

to

General Repairs

Please contact Paul for a free estimate

01449 744360 or 07876 244461

or email paul.cousins268@btinternet.com

bradley juan

07502 414732

info@thegardendevolver.co.uk

the garden developer
creator of bespoke landscapes...

01449 741868

Brook Edge, Newberry Road,
Bildeston, Suffolk, IP7 7ES

SUE HB'S 2nd & LARGER CHOICE PLANT SALE

All specially grown by Sue and friends for this event, including
Unusual, hardy, drought tolerant, perennials, annuals, shrubs, grasses, herbs,
dahlias, auriculas, lilies ...

21-22 SHILLING STREET, LAUENHAM
CO10 9RH

SATURDAY 21 APRIL 10am - 2pm

All proceeds to Marie Curie Cancer Care
Reg charity no 207994

PLUS

Cathy Bullen's French Brocante Stall

Courses in Natural and Traditional Building

Orchard Barn

Rural Skills Development Centre
Far Ringshall, Mid Suffolk IP14 2LY

01473-658193

www.orchardbarn.org.uk



Heritage Home Care and Repair Courses for home-owners and builders

Traditional Carpentry, Timber Framing, Cob, Greenwood
IHBC CPD certificates on most courses

Practical building courses that don't cost you the earth, but teach
you how to work with the clay under your feet, the hazel from
the hedgerow, and coppiced trees from local woods.

We are a small, friendly Ipswich based practice with projects mostly in East Anglia and London. We tailor our service to your needs. We have considerable professional experience designing advanced and complex buildings as well as small residential projects.

We Specialise in:

- Residential Design
- Loft Conversions & Extensions
- Commercial Design and Offices
 - Interior Design
- 3d Visualisations and Graphics

We can provide:

- Outline Design
- Planning Applications
- Building Regulations
- Construction Drawings

Contact us for a **FREE** quotation

www.marcharchitecture.co.uk
email: maria@marcharchitecture.co.uk
Tel: 01473 749 226 Mobile: 079 1213 9595

SUFFOLK CARPET CLEANERS

We'll get your
Carpet & Upholstery
fresh & clean.

* Stain Guard available
at extra cost.

For more information

Tel: 01449 741 550

Mob: 07586 921 610

Email: info@suffolkcarpetcleaners.co.uk

MANNING & WOODS LTD.

22 Stowmarket Road, Old Newton, Stowmarket, IP14 4EE



BUILDING CONTRACTORS
PROPERTY MAINTENANCE
SPECIALIST DECORATORS



Tel. 01449 673315

Email info@manningandwoods.co.uk

Website www.manningandwoods.co.uk

Manning & Woods Ltd. is formed by the merger of Mannings Ltd.
and Simon Woods Property Maintenance

RYLENES CATTERY

Wallow Lane • Naughton • Nr. Hadleigh • Suffolk • IP7 7BZ

3 miles from Bildeston

5 Star Luxury Boarding in a rural countryside location
where each cat is an individual

**OPEN
ALL
YEAR**

- ☺ **R** Reliable, experienced, friendly owners
- ☺ **Y** Young/old felines boarded
- ☺ **L** Long/short stays
- ☺ **E** Extra attention re: medical/dietary needs
- ☺ **N** Night/Day vet on call
- ☺ **E** Essential vaccinations
- ☺ **S** Single/family heated & insulated chalets



LOTS OF CUDDLES & TLC

Telephone: 01473 658747 • E-mail: rylenes@btinternet.com
www.rylenescattery.co.uk

CLASS 4 **MOT CENTRE** CLASS 7
CAR AND COMMERCIAL SERVICING

GENERAL REPAIRS
TYRES & EXHAUSTS

FREE LOAN VEHICLE WHEN AVAILABLE

BASE GARAGE LTD

Lower Farm Road, Great Bricett, Ipswich,
Suffolk, IP7 7DR

01473 657704 or 01473 658987

BILDESTON ELECTRICAL

Rewires, Extensions, Board Changes or New Installations

Any Alterations to Existing Installations
(lights, sockets, etc.)

Contact Ian
01449 743664 or 07754 723685

Do you know someone who needs care?

Our Bildeston team offers
specialist live in care.

Working with people of all ages, our live in
carers provide one-to-one support, balancing
independent living with bespoke care needs.

We can assist with:

- personal care
- companionship
- housekeeping



Find out how we can help you,
please call 0808 180 1027
or visit www.helpinghands.co.uk



Helping Hands
Established since 1989

Friendly Experienced Teacher offers Individual MATHS Tuition Speciality Confidence Building KS1 – KS3

Call Colin Plummer on
01449 736918
for details and availability
or email:
colinp52@btinternet.com

BILDESTON VILLAGE CHOIR

Inspired by the Military Wives choir and Gareth Malone? Bildeston certainly seems to be. There are plans afoot to form Bildeston's very own village choir under the baton of Rolf Paoli. Practice using the following lyrics sung, heartily, to the tune of *Galverston* by Glen Campbell.

If there is enough interest there is hope that the Bildeston Village Choir will be booked for the next B Natural! No audition necessary, but hopefully you'll soon be hearing this little ditty sung throughout our village.

Bildeston, oh Bildeston, I still hear your buses parkin'
I still smell the blue fumes chokin'
Number 461, when I left Bildeston

Bildeston, oh Bildeston, I still hear your pub pints pulling
While I watch the bar game flashing
I close my eyes, and dream of Bildeston

I still see her standing by the clock tower
Standing there lookin' out for the key
Is she waiting there for me?
By the phone where we used to be

Bildeston, oh Bildeston, I'm so looking forward to buying
The King's Head chips she's frying
Before I see our Bank Stores closing in the sun
at Bildeston, at Bildeston

Bildeston, oh Bildeston, I see the new square ground gleamin'
with the speed gun people smilin'
and our MP Tim complainin'
at Bildeston, at Bildeston

Bildeston, oh Bildeston, my stomach is still growin'
from the Crown's delicious puddin'
I just gotta keep eating'
Oh, gaviscon, oh gaviscon...

Lindsey Painting & Decorating Services

Professional & reliable interior and exterior home decor. Paint, Wallpaper Coving etc. Plus other allied services, Woodwork, tiling, laminate flooring. Curtain hanging, tracks/pelmets fitted.

Terry Peters

Home **01449 741483**

Mob **07809 571790**

Email **tac59@talktalk.net**



The Tree GP

THE TREE SPECIALIST

- ✓ Tree Felling
- ✓ Tree Surgery
- ✓ Hedge & Shrub Pruning
- ✓ Firewood
- ✓ Stump Grinding
- ✓ Section Dismantling
- ✓ Tree Planting
- ✓ Debris Removed From Site

FRIENDLY PROFESSIONAL ADVICE & FULLY INSURED

Tel: 01473 359582

www.the-tree-gp.co.uk



Gilly's Beads n Jewellery Designs

Many designs to choose from or tailored to your individual needs.

Follow me on Facebook Gilly's Beads or Twitter @GillysBeads

Or just send me your email and I will keep you posted with all the new designs

I am based at Bildeston Ipswich

For more information contact Tracey on

07415 126 339

email: mail@gillysbeadsnjewellerydesigns.co.uk

www.gillysbeadsnjewellerydesigns.co.uk



March at

Brook Farm Studio

For details call Hazel on 07432 138966 or email

brookfarmstudio@gmail.com

Pottery (Coil Pots)

Monday 2nd April 2pm 5pm – £20

Children's Easter Crafts

Wednesday 4th 10.30am-12.30pm – £5

Pottery (Porcelain Slip Casting)

Thursday 11th April 2pm-5pm – £25

Pottery (Glazing Session)

Friday 12th April

Figurative Drawing

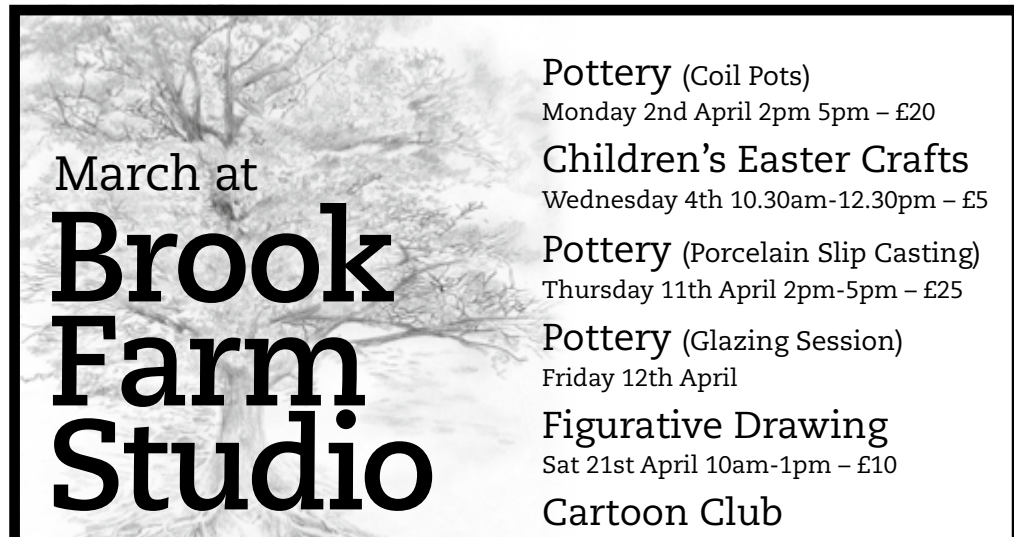
Sat 21st April 10am-1pm – £10

Cartoon Club

Sat 21st April 2pm-4pm – £5

Creative Embroidery

Saturday 28th April 10pm-4pm



KERSEY SCHOOL HOSTING MAY FAYRE

Kersey School will be hosting a May Fayre, Ball Run & Plant Sale on Saturday 12th May between 14:00 and 16:00. There will be entertainment, stalls, games, gift stands, plants, barbecue, beer and other refreshments.

There will also be a Ball Run with fantastic prizes for the first ball into the SPALSH!

FOOD COLLECTION BOX FOR ANIMAL CHARITY

Suffolk and Essex Small Animal Welfare has recently installed a food collection box next to the Customer Services Desk in Asda, Goddard Road, Ipswich. Animal loving shoppers can deposit tinned or dried food, bedding and toys for the many rescued cats, dogs, rabbits, birds, etc that are cared for at the Sanctuary in Stoke Road, Leavenheath, CO6 4PP. SESAW is run by volunteers and depends heavily upon the generosity of the public. Visitors are welcome Wednesday to Sunday, 10am to 1pm, or go to www.sesaw.co.uk

CARTOON WORKSHOP
FOR CHILDREN AND ADULTS
AT BROOK FARM STUDIO
1 HIGH STREET BILDESTON
ONE SATURDAY PER MONTH
ON THESE DATES:
21ST. JANUARY
25TH FEBRUARY
24TH MARCH
21ST APRIL
19TH MAY
2 p.m.~4p.m.
BEGINNERS WELCOME!
WATCH THIS SPACE...
CONTACT BIB EDWARDS
EMAIL bib.edwards@btinternet.com
TEL. 01449 740664



Recipe of the Month

CLASSIC CARROT CAKE



Pop most of the ingredients into a freestanding electric mixer and it will do the hard work for you. The fun's in the frosting.

Ingredients

250ml sunflower oil
225g light muscovado caster sugar
Three large eggs
225g self raising flour
One teaspoon ground cinnamon
250g carrots, grated

For the Frosting

500g full fat cream cheese
400g golden icing sugar, sieved
50g pecan nuts, chopped
Finely-grated zest of one orange

Preparation Method

1. Heat oven to 180°C, Gas 4. Grease and base line two 20cm sandwich tins.
2. Pour the sunflower oil into a large bowl. Add the sugar and whisk for a few minutes.
3. Gradually whisk in the eggs.
4. Sieve in the flour and cinnamon and gently fold in.
5. Fold the carrots into the mixture, then pour it between the two prepared tins.
6. Bake for 25-30 minutes, until well risen and golden. Push a cocktail stick into the centre – it's ready if it comes out clean. Cool in the tin for five minutes, then on a wire rack.
7. Meanwhile, stir the cream cheese, to soften it. Gradually mix in the icing sugar until soft and smooth. Don't over mix, or it may go runny.
8. Spoon a third of the cream cheese frosting on to one carrot cake and top with the other one. Spread the frosting over the top and sides of the cake. Sprinkle with pecans and orange zest.

ANNUAL PARISH MEETING

WHAT IS A PARISH MEETING?

Every English Parish must have a Parish Meeting (Local Government Act 1972, s13(1)). This meeting consists of the local government electors registered for the area for which it is held i.e. all those who have a right to vote in BILDESTON. It can be convened by the Parish Council Chairman, two Parish Councillors or six electors for the area for which it is to be held. The meeting must be held each year between 1st March and 1st June (incl.) and must be after 6pm in the evening!

So that's the law... what happens in practice?

WHAT IS BILDESTON'S ANNUAL PARISH MEETING LIKE?

Historically Bildeston's Annual Parish Meeting has been arranged by Bildeston Parish Council and held in April or May. It has been an opportunity for the Parish Council and organisations and charities within the village to report on their activities during the year. It has also been an opportunity for residents to ask questions and provide feedback to all those groups.

The Parish Council invites representatives from village groups and advertises the meeting on the notice board and, this year, on the Bildeston website. The Parish Council usually hosts the event and pays the room hire.

WHEN IS THE NEXT MEETING?

The next Annual Parish Meeting will be on Monday 23 April 2011 at 7.30pm in the Chamberlin Hall.

LAVENHAM ART FESTIVAL

Lavenham will be playing host to a town-wide art festival over the May bank holiday weekend. About 15 local artists, painters, sculptors, weavers, photographers and all the local galleries will be taking part. Well-known artist Peter Partington will be painting a portrait of a live owl, potters will be inviting adults and children to try their hand at the potter's wheel and sculptors will be working with live models, all in marquees in the Market Place. There will be art exhibitions in the Guild Hall, Little Hall and primary school, and the beautiful gardens of Lavenham Hall, full of the life-size works of sculptor Kate Denton will be open – go along, it should be great!



Bildeston School PTFA



CAR BOOT SALE

AND TABLE TOP SALE
(INDOORS IF WET)

SATURDAY 12th MAY

9am to 12pm

Bildeston School Playing Field

Newberry Road, Bildeston, IP7 7EU
(look out for the road signs)

Free Entry

Sellers:-

- Gates open for cars at 8am
- Cost of £5 per car/table on the day only
- First come first served
- All cars must stay on site until 1pm
- Cost of £1 for child's wheelbarrow or box



Coffees * Teas * Soft Drinks * Home-made Cakes

Walnut Tree Designs

BESPOKE CURTAINS & BLINDS

Free design consultation in your own home

Complete made-to-measure service for all your soft furnishing requirements

UPHOLSTERY – PELMETS – HEADBOARDS – VALANCES

CUSHIONS – FABRICS – TRIMS – POLES

VENETIAN BLINDS

Do call Viki Angela or Terri Oxley to arrange a free consultation

Tel: 01449 736807 / 01284 828263 M: 078269 30011

email: walnuttreedesigns@yahoo.com

Cockerells Hall, Buxhall, IP14 3DR

Garden & Property Maintenance

Weeding – Hedges – Lawns – Fencing – Patios – Pruning

Internal and External Home Improvements

Reliable and Dedicated Service

For your GARDENING needs
call JAMES

Tel: 01787 312 401

Mob: 07817 208 869

email: jameskossick@gmail.com

For your PROPERTY needs
call IAN

Tel: 01787 313 222

Mob: 07791 647 187

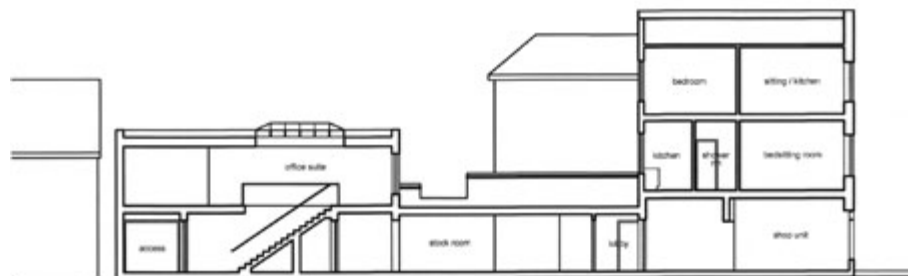
email: iankossick@btinternet.com

alex baldwin architects

specialising in: residential design & developments, listed buildings, extensions & alterations, and light commercial

measured surveys, planning and building regulations applications, planning appeals

WELHAM HOUSE
13 SQUIRRELLS MILL ROAD
BILDESTON
IPSWICH
SUFFOLK IP7 7DY



longitudinal section thru offices, stock room, shop unit and existing flats above

T: 01449 741227

M: 07733 375625

E: alex.baldwin@tiscali.co.uk contact: alex baldwin diparch (Oxford) ARB RIBA

Ashtons Aerials & Satellite

Your Digital TV & Radio Specialists

- Wideband "Digital" aerial upgrades, loft & exterior installations.
- FM & DAB aerial upgrades & installations.
- Poor reception solutions.
- Extra viewing points.
- Projector & Home Cinema installations.
- European Fixed & Motorised Satellite systems.
- CAI Plus registered, Number C1531.
- Sky upgrades & installations.
- Flat screen TV installations.
- Phone line extensions
- Repairs & upgrades to existing TV and satellite systems.
- Communal system installations.
- BBC/ITV freesat supply & installation.
- Registered Digital Installer (RDI) 18264786



get set for digital



Unit 9 Anglia Business Park, Ware
Road, Ringshall. Tel: 01449 777104
www.ashtons-aerials.co.uk

IMPORTANT NOTICE

ROAD TRAFFIC REGULATION ACT 1984: SECTION 14 TEMPORARY CLOSURE OF PART OF THE B1115 HIGH STRET, BILDESTON

Suffolk County Council intends to make an order closing the B1115 High Street, Bildeston – Outside Number 101 to enable Carriageway Reinstatement. Other coordinated works may also take place during this period.

Access will be open for pedestrians and cyclists.

The diversion route will be B1115 Bildeston Road, B1115 The Street, B1115 The Causeway, B1115 Water Run, B1115 Finborough Road, B1115 High Road, B1115 Finborough Road, B1115 Tavern Street, B1115 Station Road West, A1308 Gipping Way, B1113 Needham Road, B1113 Stowmarket Road, B1113 High Street, B1078 Barking Road, B1078 Needham Road, B1078 Ladyfield, B1078 The Tye, B1078 Ringshall Road, B1078 Ipswich Road and vice versa.

It is intended that the closure will operate from 1 April until 2 April 2012, but if necessary the order may remain in force for 18 months (or longer if extended by the Minister).

Enquiries should be made to Ben Green of Mervyn Lambert Plant, Tel 01953 688211, Email planning@mervynlambert.co.uk

Date: 22 March 2012

TIMOTHY EARL

Head of Legal Services
Suffolk County Council
Endeavour House
8 Russell Road
Ipswich
IP1 2BX

April 2012

Church Services & Events in Bildeston

St Mary Magdalene

Bildeston w Wattisham Parish Church

For more information, contact Revd Barbara Stanton

Tel: 01449 744190 Email: b.stanton150@btinternet.com

1st April Palm Sunday	11am	Palm Sunday Procession & blessing of palms, Communion	Whatfield
5th April Maundy Thursday	7.30pm	Holy Communion with hymns, washing of feet, vigil	Bildeston
6th April Good Friday	Noon to 3pm	12 noon-12.20 Lindsey 12.30-12.50 Semer, 1pm-1.20 Whatfield 1.30-1.50 Naughton 2.00-2.20 Nedging, 2.30-3pm Bildeston	Around the Benefice
8th April Easter Day	8am 11am	Holy Communion Family Service, Easter egg hunt	Bildeston Bildeston
15th April	11am	Parish Communion & Baptism	Bildeston
22nd April	11am	Family Service & Baptism	Bildeston
29th April	11am	Benefice Communion followed by lunch – call 744190 to book.	Bildeston

For all services across the Benefice please refer to *Roundabout*, available in St Mary Magdalene Church

Baptist Church, Duke Street, Bildeston

Paul Cousins tel: 01449 744360 email: paul.cousins268@btinternet.com

Service every Sunday morning at 10:45

Lunch Club: at 12:30 on the **first Wednesday** of each month
All are welcome

Community Coffee Centre: Every Friday from **09:15 to 11:30**

Enjoy meeting old and new friends at these events!



Bildeston Community Coffee Centre Baptist Church 9:15-11:30... **Every Friday**

Bildeston Mother & Toddler Group Baptist Church 9:45-11:45... **Every Tuesday**

Bildeston Ladies Club –

Club Card Making with **Una Johncock** Chamberlin Hall 19:45..... **Thursday 5th**

But You Don't Look Ill cheerful support for hidden conditions,
The Stevenson Centre, Gt. Cornard 13:00-15:00 – drop in any time ... **Thursday 12th**

Parish Council Meeting Chamberlin Hall 19:30..... **Monday 16th**

Bildeston Annual Parish Meeting Chamberlin Hall 19:30..... **Monday 23rd**

Bildeston Community Cycling

Back on Your Bike Market Place 18:45..... **Tuesday 24th**

More details on these events inside.

Tell us about May events!

01449 741541 / editor@bildestonbugle.co.uk



When you're finished with this Bugle please pass it on or recycle it.