

# Bildeston Bugle

Issue number 257  
MARCH 2012

The Village Magazine  
produced for the people of  
Bildeston

This issue was kindly sponsored by  
*Silly's Beads n Jewellery Designs*  
Thank you all for your help and support  
through 2011, I am looking forward  
to working with you through 2012.



## BILDESTON BUGLE ADVERTISING AND FREE CONTRIBUTION INFORMATION

Our aim is to provide every resident in Bildeston with a newsletter which provides information of local interest *FREE OF CHARGE*. To that end we are required to be efficient in the space we use to print free notices.

We endeavour to include interesting tidbits, announcements for events open to the general public for free and items of a charitable nature free of charge. Ongoing free announcements need to be reduced to minimum size or make a contribution towards printing costs. Always check with us before submitting your advert and **ALWAYS** provide us with all of your contact details.

### *Sponsor an issue – £15 per issue*

includes a brief message on the cover of the magazine and at the top of the website

### *Advertising Rates*

	1 issue	6 issues (15% disc)	12 issues (30% disc)	
1/4 page	£2.75	£14.00	£23.10	65mm W x 92mm H
1/2 page	£5.50	£28.05	£46.20	134mm W x 92mm H
full page	£11.00	£56.10	£92.40	134mm W x 190mm H

#### THE SMALL PRINT

Free contributions, adverts and payments are required by the 17<sup>th</sup> of the month for inclusion in the following month's issue.

Please make cheques payable to Bildeston Bugle and send to:

The Editor, Bildeston Bugle, 8 Manor Road, Bildeston, IP7 7BG

Receipts cannot be issued without your full postal address.

**If we do not receive payment by the 17th of the month  
your advertisement will NOT be included**

### *The Bildeston Bugle Editorial Team are:*

Daniel Newman (editor) – 8 Manor Rd, Bildeston IP7 7BG tel: 01449 741 541

Nancy Dales (treasurer) – 142 High St, Bildeston IP7 7EF tel: 01449 741 047

Alison Sims – 1 Squirrells Mill, Bildeston IP7 7DY tel: 01449 741 813

Tricia Baldwin – 13 Squirrells Mill, Bildeston IP7 7DY tel: 01449 741 227

Vic Ling – 5 Squirrells Mill, Bildeston IP7 7DY tel: 01449 744 574

## Reader's Letter: A Very Angry Resident

I read the article "BAD OWNERS" in February's Bugle with small hope the offending owners would take note.

They didn't ... as I suspect they are ignorant and probably can't read. Certainly they do not have a conscience. Daily a dog has messed all over the pavements around the village. Due to the consistency of the faeces the poor dog is unwell ... but this owner doesn't care about that either!

As a responsible dog owner myself I am angry at this offending owner as it reflects on the rest of considerate owners. I have infact got a broom and water and cleared up this mess outside my back gate so others do not walk in it as it spreads over quite an area.

I don't want a Big Brother village but feel CCTV is the only way to name and shame this idiot.

As this obviously is not going happen I just hope the owner steps in their own mess.

But beware... I am keeping my eyes out for you.

A very angry resident.

## IN LIKE A LION AT SESAW

March heralds the start of Spring but the long nights are very cold for the animals. If you are having a clear out, Suffolk and Essex Small Animal Welfare still needs blankets, bedding, towels, household textiles or saleable items. Volunteers are also needed on an occasional basis for fund raising and maintenance jobs. If you can help, or need to arrange a collection, please phone 01473 652080 or text 07881 785535.

Another reminder of Spring is the Primrose Festive at Bypass Nurseries, Capel St. Mary, held to raise money for the Sanctuary. This annual event is very popular with gardeners and runs from 25th February to 4th March, Mon-Sat 09:00-17:30, Sun 10:30-16:30.

## See Jack: [www.bildestonbugle.co.uk/jack](http://www.bildestonbugle.co.uk/jack)

Many animals including cats, rabbits, guinea pigs and dogs such as Jack, a three year old Jack Russell, await new homes. If you are looking for an animal to share your life, visit SESAW in Stoke Road, Leavenheath, CO6 4PP. Open 10:00-13:00 Wed-Sun. Closed Mon & Tues.

# BILDESTON WILDLIFE WATCH

For all you wildlife fans February saw the return of a rare species of animal to Bildeston; the shy member of the Sciuridae family (that's squirrels to you and me) the Clearial Snowus. Usually squirrels, having safely and securely secreted their nuts, lie low for the winter. However, this species, the Clearius Snowus, thrives on conditions when temperatures suddenly fall below zero, snow falls deeply and the ground is covered so much that the paths and roadways are virtually unusable.

In temperate regions, such as South Suffolk, late winter and early spring is the hardest time of year for squirrels, because buried nuts begin to sprout and are no longer available for the squirrel to eat, and new food sources have not become available yet. Squirrels' diet consists primarily of a wide variety of food, including nuts, seeds, fruits, fungi and greens. However some squirrels also consume meat, especially when faced with hunger. Therefore it is essential to ensure regular food supplies, especially when road conditions are so poor that home deliveries could be cancelled, and even the normally easy route through the trees to Bank Stores is now quite perilous.

Its behaviour is also unique. It emerges from its warm homes with an assortment of specialised tools and clears snow away from the front of its homes allowing access to forage for food. Squirrels cannot feed upon cellulose and must rely on foods rich in protein, carbohydrates and fat, so keeping its well known routes open is vital. There is nothing worse for the Clearial Snowus than to find themselves down to their last carbonara, puy lentil or organic jam.

Another unique feature of the Clearial Snowus Squirrel is the highly developed social behaviour. This species seems to relish working together, both young and old, in an organised way to achieve a common objective. It often starts with three or four clearing outside their own homes which is seen by nearby squirrels, who then appear to rush out and join in until, eventually, almost the whole group are working together until the complete pathway is cleared. They then disappear into their own homes and don't seem to communicate like this until another crisis or celebration brings them together again. This is highly sophisticated behaviour indeed and one that the new University of Suffolk intend to study as part of its Zoology degree course. Professor Milrode told the Bugle, "It's reminiscent of Meerkat behaviour, absolutely fascinating. I love that David Attenborough, don't you?"

Apparently a village resident was fortunate enough to capture this rare event on film, so photographs may be available later to verify this unique event in our locality.

# News From Bildeston Primary School



After a very cold and icy start to February, we're hoping that the March weather will be a bit kinder to us.

Some of our Year 3 and 4 children will be going on a residential trip to Thorpe Woodlands near Thetford in a few weeks time and enjoying lots of activities including climbing, canoeing, archery and shelter building, with camp fires to keep them warm in the evening. This trip is always great fun and a wonderful experience for the children.

At the end of March, to finish this term's work on the Victorian period, Key Stage 2 will be visiting Gressenhall Farm and Workhouse in Norfolk. They will be able to experience life in the workhouse and a Victorian school, as well as a traditional Victorian Farm.

Key Stage 1 are going to be learning about The Farm and Working Animals this half term – a wonderful topic for spring time.

Now that the daylight lasts a little bit longer our outdoor after-school activities have started again, so the football, tag rugby and netball clubs are all back for the children to enjoy. The rest of this school year will see a big focus on sport as we get ready for the Olympics with a whole range of special assemblies and activities. More on this next time!

And finally, our PTFA are running the ever-popular Quiz Night and Fish & Chip Supper on Saturday 17th March at 7.30pm. We hope to see you there – the closing date for entries is Friday 9th March. Contact Sally Hayes on 743682 for details.

Victoria & Nicola's  
**Spring Barn**

Please join us for a morning of  
Spring Time Flair, Ideas & Inspirations

Continental Spring & Easter Decorations

Swedish & German Culinary Delights

Seasonal Flowers & Beautiful Arrangements

Enjoy a cup of tea or coffee and a slice of freshly baked  
cake in our Springtime Café

**Friday 23rd March 2012 – between 10am - 1pm**

Peppertree Farm, Cooks Green, Hitcham, IP7 7NY

[www.peppertree-emporium.co.uk](http://www.peppertree-emporium.co.uk)

## Down On The Farm

Would you like a tour of a local farm?

Residents of Bildeston are invited  
for a tour by tractor and trailer of  
Dairy Farm Semer at 6pm sometime  
between 11 June and 14 July 2012.

This is initial notice to gauge interest.

If you would like to accept this invitation,  
please contact the Parish Clerk at  
[clerk@bildeston.suffolk.gov.uk](mailto:clerk@bildeston.suffolk.gov.uk) or on 01449 740849  
or at 3 Market Place, Bildeston IP7 7EN



## Decorator // Home Maintenance



Painting  
Wallpapering  
Tiling  
Decking  
Fencing  
and more

Contact **Pete Robins**

**Telephone : 01787 319731**

**Mobile : 07527 113525**

## Bildeston Bowls Green Draw Results

Draw No 10 – January 2012

1<sup>st</sup> Prize £50

Winner: **Angie Mondon**

2<sup>nd</sup> Prize £10

Winner: **Jason & Emily**

3<sup>rd</sup> Prize £5

Winner: **Harry Chinery**

To join the Monthly Draw  
telephone Adrian 01449 741253

## BILDESTON COMMUNITY CYCLING WINTER WARMER 6

JOIN US FOR A RIDE OF ABOUT  
25 MILES, STARTING FROM THE  
MARKET PLACE AT 9.30am  
ON SATURDAY 17 MARCH.  
CAFE STOP HALFWAY.  
BACK ABOUT 12.30pm.

### PUT IT IN THE DIARY NOW!

Warm clothing recommended.  
The ride will be mainly on quiet  
lanes, at an acceptable speed  
(no-one left behind!). Regret no  
unaccompanied children under 16.  
JUST TURN UP. Or for more information,  
contact Robin Weaver 741048

## S.C. PLASTERING SERVICES



CALL SEAN FOR A  
FREE QUOTE  
TEL: 01449 723264  
OR 07773 706006

## Do you know someone who needs care?

Our Bildeston team offers specialist live in care.

Working with people of all ages, our live in carers provide one-to-one support, balancing independent living with bespoke care needs. We can assist with:

- personal care
- companionship
- housekeeping



Find out how we can help you, please call **0808 180 1027** or visit [www.helpinghands.co.uk](http://www.helpinghands.co.uk)



**Helping Hands**  
Established since 1989

## Simon Nicole Gardening Services & General Maintenance

Planting  
Grass Cutting  
Hedge Management  
Tree & Shrub Pruning  
Garden Waste Removal  
General Tidying Up/Weeding

For a friendly confidential service & advice  
**CONTACT**

**Simon**  
07526 265713  
[nicolesimon@hotmail.co.uk](mailto:nicolesimon@hotmail.co.uk)  
Simon Nicole, Thorpe Morieux, Suffolk

## FAMILY GROCER PROVISIONS OFF LICENCE BANK HOUSE STORES

Richard & Joan  
O'Sullivan



telephone  
01449 740403

## Spring is Just Round the Corner

With the ever increasing cost of fuel, not to mention the time involved, you can't ignore the extra cost of travelling to do your shopping. At Bank House Stores we endeavour to match the standards and range of the bigger supermarkets. Our special offers regularly beat theirs and you will find that you spend less and waste less by only buying what you need when you need it.

We have daily deliveries of bread from Sparling and Faiers in Lavenham and Read's Bakery in Framlingham. Loose ham and bacon is supplied by Broadland Ham and fresh eggs from Hart's in Baylham. If you want to buy local produce – you need to shop locally.

**We are open from 7am to 6.30 pm Monday to Saturday  
and 8.00 to 12.00 every Sunday and Bank Holidays.**

**The Post Office service is available during ALL opening times  
– that's 73 hours every week!**

**The Health Lottery is now available**

**Shop Locally – You Need A Jolly Good Reason Not To!**

## CHIMNEY SWEEP

### ECO SWEEP CHIMNEY SERVICES

- NEW POWER SWEEPING METHOD USED FOR A MORE THOROUGH CHIMNEY CLEAN THAN BRUSHES.
- INDUSTRIAL HEPA FILTERED VACUUM.
- FULLY INSURED.
- INSURANCE RECOGNIZED CERTIFICATES ISSUED.
- SPOTLESS, RELIABLE AND FRIENDLY SERVICE.
- ALL CHIMNEYS, WOOD BURNERS, AGA, BOILER FLUES SWEEP.
- GUILD OF MASTER SWEEPS CERTIFICATED MEMBER.



**TEL. 01359 232335**





# Barnards



Volkswagen  
Station Road East • Stowmarket  
Tel: 01449 612121

**\* MOT's £39.00 \***  
**Any car • Any make**

Applies Monday to Friday only • Class IV only

Tyres at  
**very  
competitive**  
prices.  
We offer a **free**  
tyre check

Take  
advantage  
of a **free** 34  
point health  
and safety  
check

**All Makes Major Service £249.00**  
**All Makes Minor Service £129.00**  
**Cambelt inc tensioner £349.00** (Volkswagen, Audi, Skoda  
and SEAT only)



Free collection and delivery in local area • Courtesy  
cars available

Please keep an eye on our website for all our up-to-  
date offers



## BILDESTON'S MISSING HISTORY

Old deeds hold the history of our homes that quite often cannot be obtained from other historical records.

They contain the names, addresses and occupations of the owners over the centuries, including the circumstances in which new owners acquire the property.

If the property was not owner-occupied then, the names of tenants are recited, so it is possible to find out who lived in our homes in the past.

Descriptions of property are interesting, particularly when long forgotten house names are recorded and sub-divisions, new additions, rights-of-way and rights-to-water are included.

### WHAT HAPPENED TO THE OLD TITLE DEEDS?

Today, when purchasing property in Bildeston, many people find all they receive to acknowledge ownership is some modern paperwork and a certificate from the Land Registry. What happened to the old title deeds?

If you are lucky enough to have a bundle of old title deeds for your property at home or placed elsewhere for safe keeping, are they in the best conditions for their long-term survival.

Are they kept in a plastic bag that could retain moisture? If so, ensure they are transferred to acid-free card folders punched for ventilation. This will prevent paper and parchment from crumbling away.

Are they bundled together with elastic bands? If so, remove the bands as they can cut into the paper and overtime will perish, leaving a sticky residue on your documents.

Are your papers held together with paperclips or staples? If so, these should be removed as they can go rusty. Replace them with plastic or brass clips.

Are photocopies included with your documents? If so, place these in acid-free bags as photocopies can stain paper and parchment brown and can become stuck together overtime. Separate your photocopies and keep them in acid free bags.

If these simple tips are followed, then the history of Bildeston's houses will be available to be passed for future generations.

With thanks to Sue Andrews who kindly provided this insightful information.

**IF YOU ARE INTERESTED IN BILDESTON'S VIBRANT HISTORY BE SURE TO CHECK  
OUT ISSUE TWO OF BILDESTON HISTORY QUARTERLY AVAILABLE NOW.**

## Ashley Hubbard Driving Tuition



Patient, experienced, fully qualified ADI DSA Driving Instructor.

Learner – Advanced – Refresher

Theory Test & Pass Plus Tuition

Competitive rates, door to door service in  
Bildeston, Hadleigh, Stowmarket, Needham & Ipswich areas.

T: 01449 740633 or M: 07901 563281

E: ashley.hubbard@btinternet.com

## COUSINS & SON BILDESTON LTD

available to carry out all your building requirements

from

### Renovations / Alterations / Extensions

to

### General Repairs

Please contact Paul for a free estimate

**01449 744360 or 07876 244461**

or email paul.cousins268@btinternet.com

## WINTER ACTIVITIES AT ORCHARD BARN

At Orchard Barn winter is a time for doing those jobs that require the undergrowth to be more accessible but will also keep you warm, particularly with the hard frosts and snow of the last week! One job OBe Community Interest Company volunteers have been concentrating on in January is hedge laying – through which we breathe life back into old and out of control hedges turning them into easily maintainable traditional hedgerows that preserve the life of trees and bushes rather than replace them with something far less environmentally friendly.

Hedge laying also continues the natural building life cycle providing us with supplies of coppiced Elm that we will use in the ongoing restoration of the barn and utilise in our timber framed tool shed this spring. If you pass the centre at Far Ringshall, just outside Battisford, you'll see our new traditional laid hedge growing right in front of you on the roadside! Over the winter months we have also been busy planning our 2012 training course programme which will kick-off with a seminar on "Natural Building – The Traditional Approach" to be held on 24th March at Ringshall Village Hall. For more information and bookings contact Sarah Partridge on 01473-658193 or visit [www.orchardbarn.org.uk/naturalbuildingseminar.htm](http://www.orchardbarn.org.uk/naturalbuildingseminar.htm)

### Courses in Natural and Traditional Building

**Orchard Barn**

Rural Skills Development Centre  
Far Ringshall, Mid Suffolk IP14 2LY

**01473-658193**

**[www.orchardbarn.org.uk](http://www.orchardbarn.org.uk)**



### Heritage Home Care and Repair Courses for home-owners and builders

Traditional Carpentry, Timber Framing, Cob, Greenwood  
IHBC CPD certificates on most courses

Practical building courses that don't cost you the earth, but teach you how to work with the clay under your feet, the hazel from the hedgerow, and coppiced trees from local woods.

# THE SNOW CODE

## TIPS ON CLEARING SNOW AND ICE FROM PAVEMENTS OR PUBLIC SPACES

Don't be put off clearing paths because you're afraid someone will get injured. Remember, people walking on snow and ice have a responsibility to be careful themselves. Follow the advice below to make sure you clear the pathway safely and effectively. And don't believe the myths – it's unlikely you'll be sued or held legally responsible for any injuries if you have cleared the path carefully.

### CLEAR THE SNOW AND ICE EARLY IN THE DAY

It's easier to move fresh, loose snow rather than hard snow that has packed together from people walking on it. So if possible, start removing the snow and ice in the morning. If you remove the top layer of snow in the morning, any sunshine during the day will help melt any ice beneath. You can then cover the path with salt before nightfall to stop it refreezing overnight.

### USE SALT OR SAND – NOT WATER

If you use water to melt the snow, it may refreeze and turn to black ice. Black ice increases the risk of injuries as it is invisible and very slippery. You can melt snow or prevent black ice by spreading some salt on the area you have cleared. You can use ordinary table or dishwasher salt – a tablespoon for each square metre you clear should work. Don't use the salt found in salting bins – this will be needed to keep the roads clear.

### TAKE CARE WHERE YOU MOVE THE SNOW

When you're shovelling snow, take care where you put it so it doesn't block people's paths or drains. Make sure you make a path down the middle of the area to be cleared first, so you have a clear surface to walk on. Then shovel the snow from the centre of the path to the sides.

### OFFER TO CLEAR YOUR NEIGHBOURS' PATHS

If your neighbour will have difficulty getting in and out of their home, offer to clear snow and ice around their property as well. Check that any elderly or disabled neighbours are alright in the cold weather. If you're worried about them, try contacting their relatives or friends, or if necessary the local council.

**Let's hope we don't need this again this winter!**

Reproduced from SCC's website.

St Edmundsbury Cathedral



*Elgar's*

*The Kingdom*

*Soprano* Julie Roberts  
*Alto* Mae Heydorn  
*Tenor* David Webb  
*Bass* Richard Strivens

Mid Suffolk Symphony Orchestra  
*Conductor* Leslie Olive

Saturday  
10th March 2012  
7.30 pm

with support from *The Elgar Society*

Stowmarket  
**Chorale**  
www.stowmarketchorale.org Reg charity 280488

**Tickets: £20 £16 £10 Schoolchildren free**  
Stowmarket Chorale box-office: 01449 737783  
Balaams Music shop: 01284 766933  
*Cheque or cash only please*



# Bildeston History Quarterly

This new, independent magazine has been designed to present an illustrated miscellany of articles about people, places and events in the past concerning Bildeston and its surrounding countryside.

Issue 2 includes:

- Unveiling the War Memorial
- The street names of Bildeston
- John Motte – Local boy made good by Dr Nick Amor

and the three series continue:

- Hidden Histories looks at *Newberry House*
- Lords of the Manor – Bildeston at the time of Domesday
- Links with the Sea features Rear-Admiral Cockburn



***Bildeston History Quarterly Issue 2 (Spring 2012)***

is on sale now price £3.00 at

Bank House Stores and Brook Farm Studio, Bildeston

Hollow Trees Farm Shop, Semer

Avis the Newsagent, Hadleigh

## KING'S PIGHTLE POCKET PARK

Ten years ago, yes ten years, I retired from general practice in Bildeston. What happy years they were and what a wonderful village to work in. I have, over the years, been involved with the Parish Council, the sports field, the Chamberlin Hall and the running club. I am still involved as a committee member of the Kings Pightle.

Bildeston is a very lucky village, it has everything you could wish for but, as in many other communities, we are struggling to maintain this excellence. I have always found the Bildeston people extremely friendly and welcoming, never as an article in this magazine last year.

Two weeks ago it was very cold following the snow. One morning there was a very sharp frost and every branch and twig was dusted with white. The sun shone dazzlingly on the fronds; beautiful in their delicate branching. It took me back to the early 1960s when I was at medical school. A lecturer in the anatomy department specialised in making very fine wax casts of lungs; they appeared the same as the frost on the hedges with their fine intricate branching. I was at the start of my journey then and am now approaching the end but it never ceases to amaze me how, if you will allow it, one thing reminds you of another – so many years ago. There was also a myriad of tiny points of light, all different colours, sparkling and dancing in the sun, that point in time more valuable than all the diamonds in the world.

### OPEN YOUR EYES, OPEN YOUR MIND

The next day it was totally different again. Why don't you go and see what you can find? You might get a surprise.

Mac Speake, February 2012

© mdspeake

### Reader's Letter: Unhappy Dog from Name & Address Supplied

I am a very unhappy dog. My owner takes me for walks which I enjoy. But how can I train my owner to clean up after me? I get the blame but it isn't my fault.

All my owner needs to do is follow the four point code:

1. take a bag
2. scoop it up
3. tie the bag
4. put the bag in the special dog bin or even the owner's domestic bin.

Is this too much to ask?

## Lindsey Painting & Decorating Services

Professional & reliable interior and exterior home decor. Paint, Wallpaper Coving etc. Plus other allied services, Woodwork, tiling, laminate flooring. Curtain hanging, tracks/pellets fitted.

Terry Peters

Home **01449 741483**

Mob **07809 571790**

Email **[tac59@talktalk.net](mailto:tac59@talktalk.net)**



## The Tree GP

THE TREE SPECIALIST

- ✓ Tree Felling
- ✓ Tree Surgery
- ✓ Hedge & Shrub Pruning
- ✓ Firewood
- ✓ Stump Grinding
- ✓ Section Dismantling
- ✓ Tree Planting
- ✓ Debris Removed From Site

FRIENDLY PROFESSIONAL ADVICE & FULLY INSURED

**Tel: 01473 359582**

**[www.the-tree-gp.co.uk](http://www.the-tree-gp.co.uk)**

**Beat rising fuel bills**  
**Stop energy loss**  
**Use 'Green Deal' money**



'Green Deal' is a government incentive to fund home energy efficiency with no up front cost to you.

**Solar investments still return over 10%**

**30% price drop on our Solar Panels.**

**Talk to us!** We are local certified Solar Energy Specialists eager to give you **free** advice and survey.

Call Now: **01284 706 586**  
 or visit **[www.ambervert.eu](http://www.ambervert.eu)**

## Hadleigh Choral Society

Mozart: Mass in C Minor, K427  
 Laudate Dominum  
 Oboe Concerto in C, K314  
 Fantasia K594

Haydn: Insanae et Vanae Curae

Soloists: Stephanie Corley (soprano)  
 Rebecca Afonwy-Jones (mezzo)  
 Paul Curievici (tenor)  
 Owain Browne (bass)

Colchester Symphony Orchestra,  
 conductor Christopher Phelps

**Saturday 31st March, 7.30pm**

St. Mary's Church, Hadleigh

Tickets £12 – £10(conc) – £2 (under 16)

available from  
 The Idler, 37 High St. Hadleigh  
 or on the door

## The Harmany Roadshow Mobile Disco

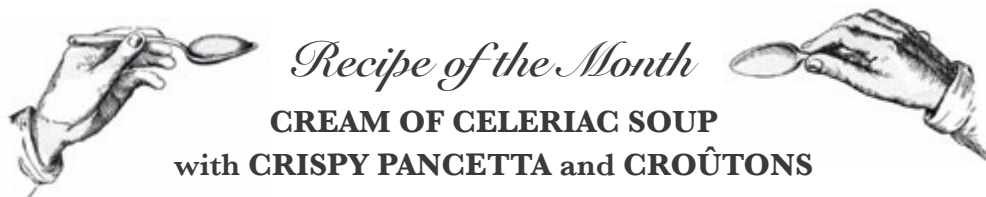
Music For All Occasions

Call Now For A Quote

Chris  
 01449 740020 or 07979 385622

Leigh  
 07876 355412

[The\\_Harmeny\\_Roadshow@hotmail.co.uk](mailto:The_Harmeny_Roadshow@hotmail.co.uk)



## *Recipe of the Month*

### **CREAM OF CELERIAC SOUP**

#### **with CRISPY PANCETTA and CROÛTONS**

### *Ingredients*

#### **For the Soup**

75g/3oz butter  
 1 onion, finely diced  
 50g/2oz streaky bacon, finely diced  
 2 garlic cloves, finely diced  
 1 leek, white only, finely diced  
 1 stick celery, finely diced  
 2 thyme sprigs, leaves only  
 700g/1lb 8oz celeriac, peeled and cut into small dice  
 1 litre/1¾ pint chicken stock  
 200ml/7floz double cream  
 salt and white pepper

#### **For the Garnish**

4 rashers pancetta  
 25g/1oz butter  
 1 tbsp olive oil  
 50g/2oz celeriac, peeled and finely julienned  
 1 slice white bread, cut into 1cm cubes  
 salt and freshly ground black pepper  
 2 tbsp extra virgin olive oil  
 2 tbsp double cream  
 2 tbsp coriander cress

### *Preparation Method*

1. For the soup, heat a wide, deep sauté pan or large saucepan until medium hot, add 25g/1oz of the butter, the onion and bacon and fry for a couple of minutes to just soften.
2. Add the garlic, leek, celery and thyme sprigs and fry for another minute; then add the chopped celeriac.
3. Pour in the stock and bring to the boil, then reduce the heat to a simmer and cook for 10-15 minutes, or until the celeriac is just tender.
4. Place into a food blender, in batches if necessary, and blend to a fine purée. Return to the heat in a clean pan.
5. Add the cream and whisk in the remaining 50g/2oz of butter. Season with salt and white pepper.
6. For the garnish, preheat the oven to 200C/400F/Gas 6. Place the pancetta onto a flat baking tray and cover with a second tray of the same size.

7. Place in the oven and cook for 10 minutes until browned and cooked through. Remove from the oven and cool for five minutes until crispy.
8. Heat a frying pan until hot, add half of the butter and the olive oil and heat until foaming.
9. Add the celeriac and stir fry for 1-2 minutes, or until just softened, then remove from the pan and drain on kitchen paper.
10. Add the rest of the butter and the bread to the pan and cook until golden-brown and crispy, tossing to cook on each side.
11. Drain on a plate lined with kitchen paper and season with salt and freshly ground black pepper.
12. To serve, pile the julienned celeriac into the centre of each of four soup plates. Ladle the soup around.
13. Crumble the crispy bacon over the top and then scatter over the croutons.
14. Finish with swirls of extra virgin olive oil and cream, and top with coriander.

## **Bildeston Ladies Club**

The Bildeston Ladies Club meet  
 monthly and do something  
 different every month.

All ladies are welcome.  
 For newcomers to the village it is  
 a great opportunity to meet people  
 and make friends.

The next gathering will be Thursday  
 1<sup>st</sup> March at 19:45 at Chamberlin Hall.

**We look forward to  
 seeing you there.**

## *Angel Delights*

**Outside Caterer &  
 Specialised Confectioner**

Weddings – Christenings – Funerals  
 Birthday Parties – Dinner Parties  
 Barbecues

**CAKES FOR ALL  
 OCCASIONS**

Contact Helen  
 01473 82857 or 07900 900329  
 info@angel-delights.com  
 www.angel-delights.com





## Libra Hypnotherapy

Body and Mind in Balance

Gill Harvey Dip. Hyp CS (LHS)

Hypnotherapy can help with a large number of emotional, psychological, habitual and psychological problems and conditions such as:

- stress and low self esteem
- anxiety & exam nerves
- weight control & smoking
- relationship issues
- habits (such as nail biting)
- phobias & sleep problems

To find out more about how hypnotherapy might help you, or to arrange for a full consultation at my practice in Bildeston, contact me by telephone or via my website.

Tel: 01449 741096

Mob: 07876 506096

[www.librahypnotherapy.co.uk](http://www.librahypnotherapy.co.uk)

Member of the  
Hypnotherapy Society



**CARTOON WORKSHOP**  
FOR CHILDREN AND ADULTS  
AT BROOK FARM STUDIO  
1 HIGH STREET BILDESTON  
ONE SATURDAY PER MONTH  
ON THESE DATES:

21<sup>ST</sup>. JANUARY

25<sup>TH</sup> FEBRUARY

24<sup>TH</sup> MARCH

21<sup>ST</sup> APRIL

19<sup>TH</sup> MAY

2 p.m.~4p.m.

BEGINNERS WELCOME!

WATCH THIS SPACE...

CONTACT BIB EDWARDS

EMAIL [bib.edwards@btinternet.com](mailto:bib.edwards@btinternet.com)

TEL. 01449 740664



## KINGS HEAD

### & Brewery

Nigel, Susie, Ryan and Freya look forward to welcoming you to the Kings Head.

- Our monthly **charity quiz night** is on **Thursday 29<sup>th</sup> March** at 8:30pm. Telephone Sue or Nigel on 01449 741 434. Thanks to Januarys teams who raised £69 for Macmillan.
- Here's our **free live music** for **March**: every Wednesday is **Open Mic Night** from **8:30pm**; from **1pm on Sunday 25<sup>th</sup> Kevin Nightingale** will be playing contemporary classical solo acoustic guitar; and from **9pm on Saturday 31<sup>st</sup>** we have highly acclaimed (Radio Suffolk) **Mean Mr Mustard**.
- Our good value homemade food uses quality ingredients that are locally sourced where possible. We are well known for tasty beer-battered fish & chips, delicious boozy beef pie (red poll beef supplied by Brook Farm, Brent Eleigh) and our freshly prepared traditional Sunday roasts. Meals are cooked to order and available to eat-in or take-away. To reserve a table please phone Sue or Nigel on 01449 741434.
- We brew our own real ales on-site (tours by arrangement) with at least one other from a local independent brewer.
- Our opening times are as follows:
 

Wednesday	Open 6pm-12am (open mic/buskin night)
Thursday	Open 6pm-11pm (bar games night)
Friday	Open 4pm-12am (full menu 6-9pm)
Saturday	Open 12pm-12am (full menu 12-2pm & 6-9pm)
Sunday	Open 12pm-10:30pm (roast & full menu 12-3pm)
Monday/Tuesday	Closed (except bank holidays)

# BILDESTON PARISH COUNCIL

Minutes of the meeting of Bildeston Parish Council  
held on 13th February 2012 in Chamberlin Hall at 19:30

In attendance:

Councillors:

R Lester (Chairman), A Guttridge (Vice-Chairman)

J Cartwright, P Cousins, D Dempsey, D Drury,

R Lindsay, N Tye

Cllr D Keane (BDC)

Rev Barbara Stanton

V J Allard (Clerk)

There was one member of the public present

## C155/11/12 CHAIRMAN'S WELCOME

Due to late arrival of the Chairman, the Vice-Chairman took the chair and welcomed two Members and the Public to the meeting.

## C156/11/12 APOLOGIES FOR ABSENCE

Apologies for absence had been received from Cllr R Taylor), Cllr J Pembroke (SCC), PCSO Jamie Fudge and P Gladwell (RFO) and for lateness from Cllrs Cartwright and Lester.

## C157/11/12 DECLARATIONS OF INTEREST

Cllr Guttridge declared that he was an officer of Suffolk County Council and Cllr Cartwright had declared an interest in item 8 on the agenda – Relocation of Bildeston Toddler Group.

## C158/11/12 TO APPROVE THE MINUTES OF PREVIOUS MEETING

The minutes of the meeting held 9 January 2012 were confirmed and signed as a correct record.

## C159/11/12 POLICE REPORT

For the period from 09/01/12 to 06/02/12, no crimes had been reported.

## C160/11/12 SUFFOLK COUNTY COUNCIL

There was no County Council report this month.

## C161/11/12 BABERGH DISTRICT COUNCIL

Cllr Keane reported that work on the integration with Mid Suffolk was progressing well. The newly appointed CEO had settled in nicely. On the annual budget, the Council had decided on a small increase in council tax which worked out at 8p per week for a Band D property. It had been thought preferable to make this small increase now to making larger increases in future years. On car park charges, it had been decided that there would still be no charge for short term (3 hours) parking. There was nothing new to report regarding Tesco's although a redesigned application was expected.



A Member expressed deep concern regarding redundancy payments, reduced staffing and car park charging. Cllr Keane stated that he had no knowledge that staff reduction would affect services, the whole idea of the amalgamation of the two Councils being to save duplication.

## C162/11/12 FINANCE

### Bildeston Toddler Group

Councillor Cartwright presented a report on behalf of the Bildeston Toddler Group explaining the need to relocate to larger premises preferably with a secure outdoor area. The group had been meeting at the Baptist Church but an increase in the number of children wanting places necessitated a change of venue. Chamberlin Hall had been seen to be most suitable.

To facilitate the move, the group would have to acquire a certain amount of equipment since up to now it had been using those items belonging to the Church. There would be fund raising events in the future but for immediate use, the group was requesting start-up funding.

**RESOLVED** that a grant of £150 be made to Bildeston Toddler Group immediately with further support being made available when the group had become satisfactorily established in its new venue.

### To Approve Payments

The following payments were approved

Payee/Service	Cheque No.	Amount
Suffolk County Council Street Lighting 12 mths	101365	£3056.61
Babergh District Council Litter & Dog bin emptying 12 mths	101366	£347.64
Clerk	101367	£208.39
RFO	101368	£100.30
Bildeston Toddler Group Minute number C162/11/12	101369	£150.00

## C163/11/12 BILDESTON SPORTSFIELD – HEDGE MAINTENANCE

**RESOLVED** that this item be added to the existing groundwork's contract.

## C164/11/12 QUEEN'S DIAMOND JUBILEE

There had been a national call for beacons on church towers across the country to mark the Queen's Diamond Jubilee. Rev Stanton reported that both the Diocesan and the Fire Service Authorities had advised against this at St Mary Magdalene's owing to the nature of the tower.

It was **AGREED** that a working group would be set up to facilitate liaison between various interested groups in the village to arrange suitable celebrations for this event.

## C165/11/12 PARISH MEETING AND PARISH COUNCIL ANNUAL GENERAL MEETING

These meetings would be held on 23 April and 14 May respectively. To accommodate Easter Monday, the April Parish Council meeting would be held on 16 April 2012



## C166/11/12 PROPOSED PROJECTS FOR S106 FUNDING

The following suggestions had been offered particular attention being paid to school students.

- skate park
- tree house
- nest swing
- improvements at the sports field and Kings Pightle Pocket Park including a bird hide, wooded copse and picnic areas with improvements to the car park.

Pricing for these items would be sought to be considered in making a decision.

## C167/11/12 TRAFFIC CALMING – PUBLIC MEETING

Arrangements were ongoing and the item would be carried forward.

## C168/11/12 MATTERS ARISING/CARRIED FORWARD FROM PREVIOUS MEETINGS

### Signage for King's Pightle

Cllr Lester presented a report which was received and it was DECIDED that the project be carried on to the next stage.

### Monks Eleigh and Neighbourhood Transport (M.E.A.N.T)

Regarding Bildeston, this project had been dropped being of little advantage to its residents.

### Brooksfield – dropped kerbs

The County Council has responded saying that there was no finance for any scheme at this time. Members thought that a dropped kerb in this location would be of great advantage to local residents and by unanimous agreement it was **RESOLVED** that the Council would fund the work. The Clerk was asked to arrange.

### CHAMBERLIN HALL- To consider a request for funding

This item to be carried forward as the request had not yet been presented.

### Footpath link between Rotheram Road and Smock Meadow.

An unevenness in this path had been reported at the last meeting. Investigations had not disclosed who was responsible for this path.

**AGREED** that the Clerk be authorised to make application to the Land Registry for details of ownership of this path in order that approach could be made to them for these repairs.

## C169/11/12 PLANNING MATTERS

### Planning appendix A

Application Number:	B/12/00042
Location:	Bildeston Health Centre, High Street
Proposal:	Crown lift 1 no. Beech tree to allow 2.5m clearance from ground level and reduction of limb. Reduce crown of 1 no. Acacia tree by approximately 25% to remove dead wood.
Decision	No Objection

## Planning Appendix B

### Decided by Babergh District Council

There had been no new decisions received this month.

## C170/11/12 ROAD SAFETY

### Community Speedwatch (CSW)

Recorded figures showed that traffic speeds had gradually been reducing since the CSW scheme began in September 2010. It was reported that, despite the cold, the CSW team had carried out one session this month.

There had been contact from Lavenham asking for guidance through the setting up process for a group of their own.

The Chairman and Members expressed their thanks to the group for their valuable work.

## C171/11/12 MATTERS TO BE BROUGHT TO THE ATTENTION OF THE COUNCIL

- Grit Bins and snow clearing were discussed
- Preston Olympiad – the Chairman would speak to interested groups regarding sending a team
- Chamberlin Adventure Playground to be discussed at the next meeting
- School Bus – still not resolved to the satisfaction of Members. Clerk to write again requesting that an alternative/safer remedy be sought
- Storage facilities to be discussed at the next meeting
- Mill Lane (CL 74) to be discussed at the next meeting
- A letter had been received from Dairy Farm, Semer inviting residents to go on a tour of the Farm. Interested parties should contact the Clerk initially. (Notice in Bugle)

### The meeting closed at 10pm

The next meeting of the Parish Council was scheduled to be held on 12 March 2012

Please note the April meeting will be held on 16 April, the third Monday in the month since the second Monday will be Easter Monday.

## Thank You

We would like to thank all the people in Squirrells Mill who cleared the snow from the whole road on the Sunday morning. It enabled us all to get out safely and the traffic to flow. They did a fantastic job, and it was very much appreciated.

Thank you, Beryl and John Evans

# HONEY BEE'S NURSERY

Hitcham Village Hall  
The Causeway, Hitcham

For children aged 2—5 years old  
High adult : child ratio  
Qualified and Experienced Staff

2 Indoor Rooms and Large Outdoor Area

## Opening Times

Monday, Wednesday & Friday 9.15a.m.—12.15p.m. or 3.15p.m.

Tuesday & Thursday 9.15a.m.—12.15p.m.

Early Drop off of 8.30a.m. available

Lunch Club available each day until 1.15p.m.

Rate is £2.50 per hour (long day £15.00)

## Ofsted Registered

Early Years Funding accepted for all 3 & 4 year olds

2 year old funding may be available

*Awarded the Suffolk Quality Assurance Kitemark*

Come along for a visit during any session, no appointment  
necessary or ring for more details and a prospectus

Contact: Mrs Sharon Scarfe 01449 740764 (village hall)  
01449 740581 (home)



MURDOCH JOINERY



MAKERS OF HIGH QUALITY  
BESPOKE KITCHENS IN SUFFOLK

CALL 07845 938670

WWW.MURDOCHJOINERY.CO.UK



## BARGEWELL SKIP HIRE

### 2, 3, 4 & 6 Yard Skips

- Long or short term hire
- Delivery service 7 days a week
- Fast friendly service

**Stowmarket**  
**01449 615056**

Mobile 07770 452378

High Rd, Gt Finborough, Suffolk

# RYLENES CATTERY

Wallow Lane • Naughton • Nr. Hadleigh • Suffolk • IP7 7BZ

3 miles from Bildeston

5 Star Luxury Boarding in a rural countryside location  
where each cat is an individual

**OPEN  
ALL  
YEAR**

- ☺ **R** Reliable, experienced, friendly owners
- ☺ **Y** Young/old felines boarded
- ☺ **L** Long/short stays
- ☺ **E** Extra attention re: medical/dietary needs
- ☺ **N** Night/Day vet on call
- ☺ **E** Essential vaccinations
- ☺ **S** Single/family heated & insulated chalets



**LOTS OF CUDDLES & TLC**

Telephone: 01473 658747 • E-mail: [rylenes@btinternet.com](mailto:rylenes@btinternet.com)  
[www.rylenescattery.co.uk](http://www.rylenescattery.co.uk)

# LANDSCAPING

*Complete  
Landscaping  
Services*

**Considering a Block Pave  
DRIVE – PATH – PATIO?  
ADVANTAGES!  
Looks good and increases  
property value  
NO MAINTENANCE**

- PATIOS
- DECKING (all types)
- DRIVES (Brick – Block – Gravel)
- FENCING
- GATES
- PATHS



**Call Chris Smith on 01449 740128 or 07904 334506**



GENERAL REPAIRS  
TYRES & EXHAUSTS

FREE LOAN VEHICLE WHEN AVAILABLE

**BASE GARAGE LTD**

**Lower Farm Road, Great Bricett, Ipswich,  
Suffolk, IP7 7DR**

**01473 657704 or 01473 658987**

# Paul's Carpentry

Property Maintenance

*All Carpentry & Painting projects  
considered large or small  
Internal or External*

Tel: 01449 616888  
Mobile: 0779 2340365  
email: [paulhb@btinternet.com](mailto:paulhb@btinternet.com)  
[www.carpentersinsuffolk.co.uk](http://www.carpentersinsuffolk.co.uk)

We are a small, friendly Ipswich based practice with projects mostly in East Anglia and London. We tailor our service to your needs. We have considerable professional experience designing advanced and complex buildings as well as small residential projects.

**We Specialise in:**

- Residential Design
- Loft Conversions & Extensions
- Commercial Design and Offices
  - Interior Design
- 3d Visualisations and Graphics

**We can provide:**

- Outline Design
- Planning Applications
- Building Regulations
- Construction Drawings

Contact us for a **FREE** quotation

[www.marcharchitecture.co.uk](http://www.marcharchitecture.co.uk)

email: [marta@marcharchitecture.co.uk](mailto:marta@marcharchitecture.co.uk)

Tel: 01473 749 226 Mobile: 079 1213 9595

## SUFFOLK CARPET CLEANERS

We'll get your  
Carpet & Upholstery  
fresh & clean.

\* Stain Guard available  
at extra cost.

For more information

Tel: 01449 741 550

Mob: 07586 921 610

Email: [info@suffolkcarpetcleaners.co.uk](mailto:info@suffolkcarpetcleaners.co.uk)

## MANNING & WOODS LTD.

22 Stowmarket Road, Old Newton, Stowmarket, IP14 4EE



BUILDING CONTRACTORS  
PROPERTY MAINTENANCE  
SPECIALIST DECORATORS



Tel. 01449 673315

Email [info@manningandwoods.co.uk](mailto:info@manningandwoods.co.uk)

Website [www.manningandwoods.co.uk](http://www.manningandwoods.co.uk)

Manning & Woods Ltd. is formed by the merger of Mannings Ltd.  
and Simon Woods Property Maintenance

TOWN | COUNTRY | EQUESTRIAN



Emmerson Dutton



Kirsty Dutton



Rachel Lapworth

Bury St Edmunds, Suffolk  
T: 01284 749 433

[duttons.uk.com](http://duttons.uk.com)

**Duttons**  
Estate Agents



March at

# Brook Farm Studio

## Felting Workshop

Saturday 10th: 10am-1pm – £20

## Figurative Drawing

Saturday 17th: 10am-1pm – £10

## Cartoon Workshop

Saturday 24th: 2pm-4pm – £5

## Felting

Every Thursday: 10am-12.30pm – £8

## Painting

Every Friday: 10am 12.30pm – £8

Pottery & Paper Making in April

## Brook Farm Studio Bildeston

For details call Hazel on 07432 138966 or email [brookfarmstudio@gmail.com](mailto:brookfarmstudio@gmail.com)

## STOWMARKET AGGREGATES

### Cheapest Prices in Stowmarket

- **Digger & Lorry Hire**
- **Site Clearing**
- **Grab Hire**
- **Top Soil**
- **Earth Moving**
- **Sand & Gravel**
- **Bagged or Loose**
- **Same Day Delivery**

97 Finborough Road, Stowmarket

**TEL: 01449 613524**

or

**07850 450770**

**Friendly Experienced  
Teacher offers  
Individual**

## MATHS Tuition

**Speciality  
Confidence Building  
KS1 – KS3**

Call Colin Plummer on  
01449 736918  
for details and availability  
or email:  
[colinp52@btinternet.com](mailto:colinp52@btinternet.com)

# FIREWOOD

## DRY SEASONED LOGS

Various Loads Available  
Or bags at £5.50 each

Call Carol Abbott on 01473 829130  
or 07768 795981

Tree, Garden Work and Driveways also  
Undertaken



## Gilly's Beads n Jewellery Designs

Many designs to choose from or tailored to  
your individual needs.

Follow me on Facebook Gilly's Beads  
or Twitter @GillysBeads

Or just send me your email and I will keep you posted  
with all the new designs

I am based at Bildeston Ipswich  
For more information contact Tracey  
on

07415 126 339

email: [mail@gillysbeadsnjewellerydesigns.co.uk](mailto:mail@gillysbeadsnjewellerydesigns.co.uk)  
[www.gillysbeadsnjewellerydesigns.co.uk](http://www.gillysbeadsnjewellerydesigns.co.uk)



# Garden & Property Maintenance

Weeding – Hedges – Lawns – Fencing – Patios – Pruning

Internal and External Home Improvements

Reliable and Dedicated Service

For your GARDENING needs  
call JAMES

Tel: 01787 312 401  
Mob: 07817 208 869  
email: jameskossick@gmail.com

For your PROPERTY needs  
call IAN

Tel: 01787 313 222  
Mob: 07791 647 187  
email: iankossick@btinternet.com

# BILDESTON ELECTRICAL

Rewires, Extensions, Board Changes or New Installations

Any Alterations to Existing Installations  
(lights, sockets, etc.)

Contact Ian  
01449 743664 or 07754 723685

## BUSINESSES: ARE YOU MAKING THE MOST OF YOUR TRADE WASTE SERVICE?

On Tuesday March 13, Mid Suffolk and Babergh District Councils are joining forces with the Suffolk Climate Change Partnership to give businesses in our Districts the opportunity to learn more about their trade waste services.

The free event will take place at the Cedars Hotel in Stowmarket from 9.00am until 11.30am. Delegates will be able to hear about the recycling and general waste services on offer to them and also hear of ways in which they can make the most out of their waste stream.

Groundwork East of England will also be providing information on the free environmental services available to businesses in the area such as free comprehensive energy reviews and renewable energy feasibility studies. So if your business is keen to do more with its waste, increase recycling and reuse or just make sure you are getting the most from your service then come along.

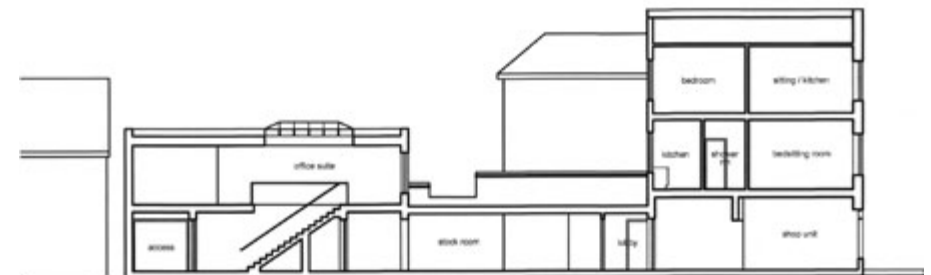
To book onto this free event please contact Groundwork East of England on 01394 444257 or at [suffolkbusinessadvisor@groundwork.org.uk](mailto:suffolkbusinessadvisor@groundwork.org.uk)

## alex baldwin architects

specialising in: residential design & developments, listed buildings, extensions & alterations, and light commercial

measured surveys, planning and building regulations applications, planning appeals

**WELHAM HOUSE**  
**13 SQUIRRELLS MILL ROAD**  
**BILDESTON**  
**IPSWICH**  
**SUFFOLK IP7 7DY**



longitudinal section thru offices, stock room, shop unit and existing flats above

T: 01449 741227  
M: 07733 375625  
E: [alex.baldwin@tiscali.co.uk](mailto:alex.baldwin@tiscali.co.uk) contact: alex baldwin diparch (Oxford) ARB RIBA

# Ashtons Aerials & Satellite

## Your Digital TV & Radio Specialists

- Wideband "Digital" aerial upgrades, loft & exterior installations.
- FM & DAB aerial upgrades & installations.
- Poor reception solutions.
- Extra viewing points.
- Projector & Home Cinema installations.
- European Fixed & Motorised Satellite systems.
- CAI Plus registered, Number C1531.
- Sky upgrades & installations.
- Flat screen TV installations.
- Phone line extensions
- Repairs & upgrades to existing TV and satellite systems.
- Communal system installations.
- BBC/ITV freesat supply & installation.
- Registered Digital Installer (RDI) 18264786



Unit 9 Anglia Business Park, Ware  
Road, Ringshall. Tel: 01449 777104  
www.ashtons-aerials.co.uk

get set for digital

## Walnut Tree Designs

### BESPOKE CURTAINS & BLINDS

*Free design consultation in your own home*

*Complete made-to-measure service for all your soft furnishing requirements*

UPHOLSTERY – PELMETS – HEADBOARDS – VALENCES

CUSHIONS – FABRICS – TRIMS – POLES

VENETIAN BLINDS

*Do call Viki Angela or Terri Oxley to arrange a free consultation*

*Tel: 01449 736807 / 01284 828263 M: 078269 30011*

*email: walnuttreedesigns@yahoo.com*

*Cockerells Hall, Buxhall, IP14 3DR*

March 2012

Church Services & Events in Bildeston

## St Mary Magdalene

Bildeston w Wattisham Parish Church

For more information, contact Revd Barbara Stanton

Tel: 01449 744190 Email: b.stanton150@btinternet.com

<b>4th March</b>	<b>9.30am</b> <b>11am</b>	Holy Communion with Hymns <b>Benefice Communion Service at Nedging</b>
<b>11th March</b>	<b>8am</b> <b>11am</b>	Holy Communion <b>Benefice Service</b> to celebrate the Queen's Accession with <b>Bishop Nigel Stock at St Peter's Lindsey</b>
<b>18th March</b>	<b>11am</b>	Mothering Sunday Service
<b>25th March</b>	<b>11am</b>	Parish Communion
<b>1st April</b>	<b>11am</b>	<b>Blessing of Palms Procession</b> <b>The Green, Whatfield</b>

For all services across the Benefice please refer to *Roundabout*, available in St Mary Magdalene Church

## Baptist Church, Duke Street, Bildeston

Paul Cousins tel: 01449 744360 email: paul.cousins268@btinternet.com

**Service every Sunday morning at 10:45**

**Lunch Club: at 12:30** on the **first Wednesday** of each month  
All are welcome

**Community Coffee Centre: Every Friday from 09:15 to 11:30**

Enjoy meeting old and new friends at these events!



**Bildeston Community Coffee Centre** Baptist Church 9:15-11:30... **Every Friday**

**Bildeston Mother & Toddler Group** Baptist Church 9:45-11:45...**Every Tuesday**

**Bildeston Ladies Club –**

**Archive Film of Bildeston** Chamberlin Hall 19:45 ..... **Thursday 1st**

**CHAPS' Cinderella Panto** Chamberlin Hall 19:30 ..... **Saturday 3rd**

**But You Don't Look Ill** cheerful support for hidden conditions,

The Stevenson Centre, Gt. Cornard 13:00-15:00 – drop in any time ..... **Thursday 8th**

**Parish Council Meeting** Chamberlin Hall..... **Monday 12th**

**Bildeston Community Cycling**

**Winter Warmer** 6 Market Place 09:30 ..... **Saturday 17th**

*More details on these events inside.*

**Tell us about April events!**

**01449 741541 / [editor@bildestonbugle.co.uk](mailto:editor@bildestonbugle.co.uk)**



When you're finished with this Bugle please pass it on or recycle it.