



Bildeston Bugle

Issue number 256
FEBRUARY 2012

The Village Magazine
produced for the people of
Bildeston

This month the Bugle would
like to welcome it's new editor

Daniel Newman
"I hope to serve you well!"



BILDESTON BUGLE ADVERTISING AND FREE CONTRIBUTION INFORMATION

Our aim is to provide every resident in Bildeston with a newsletter which provides information of local interest *FREE OF CHARGE*. To that end we are required to be efficient in the space we use to print free notices.

We endeavour to include interesting tidbits, announcements for events open to the general public for free and items of a charitable nature free of charge. Ongoing free announcements need to be reduced to minimum size or make a contribution towards printing costs. Always check with us before submitting your advert and **ALWAYS** provide us with all of your contact details.

Sponsor an issue – £15 per issue

includes a brief message on the cover of the magazine and at the top of the website

Advertising Rates

	1 issue	6 issues (15% disc)	12 issues (30% disc)	
1/4 page	£2.75	£14.00	£23.10	65mm W x 92mm H
1/2 page	£5.50	£28.05	£46.20	134mm W x 92mm H
full page	£11.00	£56.10	£92.40	134mm W x 190mm H

THE SMALL PRINT

Free contributions, adverts and payments are required by the 17th of the month for inclusion in the following month's issue.

Please make cheques payable to Bildeston Bugle and send to:

The Editor, Bildeston Bugle, 8 Manor Road, Bildeston, IP7 7BG

Receipts cannot be issued without your full postal address.

**If we do not receive payment by the 17th of the month
your advertisement will NOT be included**

The Bildeston Bugle Editorial Team are:

Daniel Newman (editor) – 8 Manor Rd, Bildeston IP7 7BG tel: 01449 741 541

Nancy Dales (treasurer) – 142 High St, Bildeston IP7 7EF tel: 01449 741 047

Alison Sims – 1 Squirrells Mill, Bildeston IP7 7DY tel: 01449 741 813

Tricia Baldwin – 13 Squirrells Mill, Bildeston IP7 7DY tel: 01449 741 227

Vic Ling – 5 Squirrells Mill, Bildeston IP7 7DY tel: 01449 744 574

AN INTRODUCTION

My family and I moved to Bildeston a little over 18 months ago to escape the joys of London. Not knowing the area particularly well we found the Bugle to be an invaluable source of information.

It is with great pleasure (and a little trepidation) that I take on the role of editor of the Bugle. I am looking forward to being part of the team that brings you this monthly take on Bildeston life.

The aim of the Bugle as I see it is to keep you up to date with the goings on in the village and hopefully provide a pleasurable reading experience.

To continue to do this in the most rewarding manner we'd love to hear from you if you have any interesting village news, an upcoming event or would like to spread the word about your club or society. We will be on the lookout for contributors to ensure the Bugle goes from strength to strength.

Please bear with me as I misspell, misinform and miss deadlines.

dn

OUR NEW HOME ONLINE

To complement the printed edition of the Bildeston Bugle we have created the Bildeston Bugle website. We aim to use this to provide news and information for the people of Bildeston wherever they may be.

This website will be constantly evolving and we hope to bring you more features in time. You can follow us on twitter for the latest breaking news and special offers from local businesses and we'll be using our twitter feed to keep you updated about events and local issues.

We'd love to hear from you if you've got any comments or suggestions, so please feel free to use the contact form to get in touch.

www.bildestonbugle.co.uk

THE QUEEN'S DIAMOND JUBILEE

On 4th June 2012 the Queen's Diamond Jubilee is to be celebrated and the date has been designated a Bank Holiday.

There is a long and unbroken tradition in our country of celebrating Royal Jubilees, Weddings and Coronations with the lighting of beacons. Therefore the Parish Council will be exploring the possibility a beacon for the village of Bildeston, possibly being placed on the Church Tower – which provides the best visibility high up on the hill.

However, if you have any other great ideas about how we in Bildeston could celebrate this occasion, the Parish Council would love to hear from you. Together we can make the 4th of June a truly memorable celebration of the Queen's Diamond Jubilee.

The next Parish Council meeting is being held on 13th February 2012. If you have any ideas or suggestions, please contact a member of the Parish Council directly or please send your suggestions to clerk@bildeston.suffolk.gov.uk. Alternatively, please do attend the next meeting on 13 February, 7.30pm in the Chamberlin Hall.

Clerk to Bildeston Parish Council

WATOTO IS BACK IN SUFFOLK!

The Watoto Children's Choir from Uganda is back in Suffolk from the 14th to 16th February. Whilst carrying out impromptu concerts in various locations in Stowmarket during the days of the 14th, 15th and 16th, the main concerts will be held at The John Peel Centre, Church Walk, Stowmarket IP14 1ET at 7pm on both the 15th and 16th February.

The children are orphans through guerrilla warfare and aids. Theirs is a story of joy and thanks even through all they have suffered.

The choir performed in Bildeston in 2009 and visited us again for an overnight stay whilst on tour in 2010. St. Mary Magdalene Church, Bildeston Primary School and The Crown hosted the choir on both occasions. On this occasion the choir is supported by Kings Church and The Cedars Hotel in Stowmarket. Entry to the concerts is free although donations will be very much appreciated as all funds will go back to Uganda with the children to help support them and the many houses that still need to be built.

For further information please call Marianne on 01449 740128 or Chris Baxter on 07841 562498.

COUSINS & SON BILDESTON LTD

available to carry out all your building requirements

from

Renovations / Alterations / Extensions

to

General Repairs

Please contact Paul for a free estimate

01449 744360 or 07876 244461

or email paul.cousins268@btinternet.com

Courses in Natural and Traditional Building

Orchard Barn
Rural Skills Development Centre
Far Ringshall, Mid Suffolk IP14 2LY

01473-658193

www.orchardbarn.org.uk



Heritage Home Care and Repair Courses for home-owners and builders

Traditional Carpentry, Timber Framing, Cob, Greenwood
IHBC CPD certificates on most courses

Practical building courses that don't cost you the earth, but teach you how to work with the clay under your feet, the hazel from the hedgerow, and coppiced trees from local woods.

Stellar Housekeeping Services

Regular Cleans
One Off 'Spring Clean'
Landlord Change Over
Care of Second Homes
Fully Insured
All Enquiries Welcome

Lynne Daniel
01449 744 457

Simon Nicole Gardening Services & General Maintenance

Planting
Grass Cutting
Hedge Management
Tree & Shrub Pruning
Garden Waste Removal
General Tidying Up/Weeding

For a friendly confidential service & advice
CONTACT

Simon
07526 265713
nicolesimon@hotmail.co.uk
Simon Nicole, Thorpe Morieux, Suffolk

LOCAL SOCIAL ENTERPRISE SUSTAINS 'TREE TO TIMBER' TRADITION

Last year was a memorable year for OBee Community Interest Company who manage the Orchard Barn renovation project at Far Ringshall near Battsford.

Firstly, they completed the new roof. It was a marathon nine months of cleaving oak shingles to make and fit a mammoth 20,000 wooden roof tiles. More than seventy volunteers learnt greenwood working skills using traditional tools such as a Froe, Draw Knife and Side Axe. All in all, it was a 'labour of love'. The end result is a beautiful roof with an authentic 17th century pitch. The rafters were mostly 50 year old oak 'thinnings' from woodland in Battsford – just three miles down the road.

ORCHARD BARN WAS LIKE A MEDIEVAL TIMBER YARD!

Battsford has a long tradition of timber framing. The first ever London Stock Exchange was commissioned to be made there by Sir Thomas Gresham almost 500 years ago – from trees grown at Barking and Battsford. OBee CIC are proud to be continuing the 'tree to timber' tradition.

Secondly, OBee CIC won the planning appeal to use the barn for rural skills development. They will be opening in March with a wide range of natural and traditional building courses, including Heritage Home care and repair workshops. Come and make your own Wattle and Daub and learn about timber frame repairs.

Thirdly, they completed the great Cob wall of Ringshall. Using only leg-power to stomp local clay, straw and hoggins into Cob – another traditional building material – it represents the ultimate in sustainability as Suffolk is blessed with a rich seam of Boulder Clay.

And fourthly, Suffolk County Council recently recognised their achievement by giving them an Improve and Prove award.

The renovation of Orchard Barn continues in 2012 with a series of practical courses that don't cost the earth, but teach you how to work with the clay under your feet, the hazel from the hedgerow, and the coppiced trees from local woods. Alternatively, if you fancy some practical keep fit activities they also offer some exciting volunteer opportunities.

For more information visit www.orchardbarn.org.uk or call 01473-658193

**Beat rising fuel bills
Stop energy loss
Use 'Green Deal' money**

'Green Deal' is a government incentive to fund home energy efficiency with no up front cost to you.
**Solar investments still return over 10%
30% price drop on our Solar Panels.**

**Talk to us! We are local certified Solar Energy Specialists
eager to give you free advice and survey.**

**Call Now: 01284 706 586
or visit www.ambervert.eu**



CHIMNEY SWEEP

ECO SWEEP CHIMNEY SERVICES

- NEW POWER SWEEPING METHOD USED FOR A MORE THOROUGH CHIMNEY CLEAN THAN BRUSHES.
- INDUSTRIAL HEPA FILTERED VACUUM.
- FULLY INSURED.
- INSURANCE RECOGNIZED CERTIFICATES ISSUED.
- SPOTLESS, RELIABLE AND FRIENDLY SERVICE.
- ALL CHIMNEYS, WOOD BURNERS, AGA, BOILER FLUES SWEEP.
- GUILD OF MASTER SWEEPS CERTIFICATED MEMBER.



TEL. 01359 232335

Ashley Hubbard Driving Tuition



Patient, experienced, fully qualified ADI DSA Driving Instructor.

Learner – Advanced – Refresher

Theory Test & Pass Plus Tuition

Competitive rates, door to door service in
Bildeston, Hadleigh, Stowmarket, Needham & Ipswich areas.

T: 01449 740633 or M: 07901 563281

E: ashley.hubbard@btinternet.com

FAMILY GROCER PROVISIONS OFF LICENCE

BANK HOUSE STORES

Richard & Joan
O'Sullivan



telephone
740248

Happy New Year

Not so “new” any more, but a big thank you from our staff for your generosity and from Joan and me for all your kind thoughts and wishes over the last year.

**Save money with our genuine offers
from 23rd January until 11th February, including:**

Tilda Pure Basmati Rice: 500g	HALF PRICE	ONLY £1.27
Andrex Toilet Tissue: 4-pack		ONLY £1.79
Herbal Essences	HALF PRICE	ONLY £1.07
Heinz Baked Beans: 4-pack		ONLY £2.00
Chicken Tonight	HALF PRICE	ONLY £1.00
Goodfellas/Ristorante Pizzas		ONLY £2.00
Londis Gin, Whisky, Vodka: 70cl bottles		ONLY £10.50
Kumala Zenith Wines	HALF PRICE	ONLY £4.79
Isla Negra/Hardy's VR/Blossom Hill Wines		ONLY £4.50
San Miguel: 15 bottle pack		ONLY £10.00

PLUS many, many more. Come in and pick up a leaflet.

We are also featuring some amazing savings on Londis fruit and vegetables, with many packs at just £1, plus a very special half price offer for Valentine's Day:

Thornton's Premium Collection: 259g..... **ONLY £3.99**

We are open from 7am to 6.30 pm Monday to Saturday and 8.00 to 12.00 every Sunday and Bank Holidays. The Post Office service is available during ALL opening times – that's 73 hours every week!

The Health Lottery is now available

Shop Locally – You Need A Jolly Good Reason Not To!

STAYING SAFE ON THE ROADS

Now that the temperature is dropping, I feel it would be appropriate to give some road safety advice. A safe journey starts in the preparation the night before. Check the weather forecast, if it's going to be cold, put a protective sheet over the windscreen (available from most good vehicle accessory shops) or get up 15 minutes earlier to allow enough time to fully defrost your car before you set off. Please don't pour hot water on your windscreen. Although the windscreen companies will love all the extra business from the shattered windscreen, I'm sure you can think of better ways of spending your time and hard earned money.

DO YOU REALLY WANT TO BE RESPONSIBLE FOR CAUSING AN ACCIDENT?

One mistake that many drivers make when it snows, is to only clear the snow from the windows of their vehicles. It is important to clear the snow from the bonnet and the roof of your car. The reason for this is that whilst you are driving along, the snow on your bonnet will be blown up onto your windscreen, instantly obscuring your vision and potentially leading to you having an accident. Likewise, the snow on the roof of your car will be blown off onto the windscreen of the vehicle following you, causing exactly the same result to their windscreen. Do you really want to be responsible for causing an accident?

THINK CAREFULLY

Think carefully if your journey is really necessary. If it is, allow a greater stopping distance between you and the car in front especially on wet or icy roads. Generally there is a two second rule on normal dry roads, you should at least double this on wet or icy roads.

Hopefully you find these tips useful. If you would like any detailed advice on road safety or crime prevention, please contact your local safer neighbourhood team on our new telephone number 101 or email us at baberghwest.snt@suffolk.pnn.police.uk

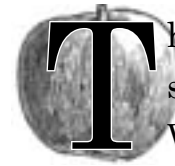
Gathering Winter Fuel?

Oil buying syndicates can be a good way to save money when purchasing heating oil. If you are interested in finding out more there are two local schemes you may wish to explore:

Bildeston Oil Syndicate: www.oil.bildeston.org

Suffolk ACRE Community Buying: www.communitybuying.org.uk

News From Bildeston Primary School



This term as part of our P.S.H.E.e lessons the whole school have been setting goals to improve their learning. We wrote on some different coloured leaves (made of card) and stuck them on a tree in the Hall to make a display. Edward's target this year is: To improve my handwriting and get a better grade in literacy. I will achieve this by listening and concentrating more. Daniel wrote: My goals for 2012 are to get a lot better in spelling and get a 5c or more in every Big Write, to start a Big Write quickly, to do well in SATs and to get the highest marks in P.E.

In our topic work, KS2 are learning about the Victorians and KS1 are learning about Water, Snow and Ice. Hare Class have been making Victorian Doll's Houses and Shark Class have been finding out facts about Queen Victoria.

The whole school have been writing Winter Poems or painting Winter Scenes. They are all on display in the corridors.

Across KS2 we have been having group tuition to help some children improve their work.

Bees have welcomed a new class teacher, called Miss Howlett because Mrs Griffiths left at Christmas.

Daniel Squirrell and Edward Davies. Shark Class.

The Harmany Roadshow Mobile Disco

Music For All Occasions

Call Now For A Quote

Chris
01449 740020 or 07979 385622

Leigh
07876 355412

The_Harmany_Roadshow@hotmail.co.uk

Bildeston Bowls Green Draw Results

Draw No 8 – November 2011

1st Prize £50

Winner: Michael Heath

2nd Prize £10

Winner: Audrey Taylor

3rd Prize £5

Winner: Paul Everitt

Draw No 9 – December 2011

1st Prize £50

Winner: Daisy Sharp

2nd Prize £10

Winner: M. Biddoff

3rd Prize £5

Winner: Eileen Stockings

To join the Monthly Draw
telephone Adrian 01449 741253

GRANTS AVAILABLE FOR SUFFOLK COMMUNITY AND VOLUNTARY GROUPS

The Suffolk Foundation, a leading grant maker in Suffolk, is seeking applications to its main grant giving programmes. Grants are available for Community and Voluntary groups including Social Enterprises of up to £5,000 from the Transforming Suffolk Community Fund and the Improve and Prove Fund. Other amounts are available from the Suffolk Fund, Port Community Fund, Safer Suffolk Fund and the Disability Care Fund. Up to £25,000 is available from the Creating the Greenest County Fund for carbon reducing projects.

Typically grants are given to help with social cohesion, build communities, and support a range of activities and projects that strengthen the voluntary sector in Suffolk. Some funds support core costs. Further information and all application forms, guidelines and closing dates are published on The Suffolk Foundation's website www.suffolkfoundation.org.uk. If you wish to discuss your idea or potential application request call Sue Wright on 01473 734127 who is happy to help.

Lindsey Painting & Decorating Services

Professional & reliable interior and Exterior home decor. Paint, Wallpaper Coving, plus other allied services.

Terry Peters

Home 01449 741483

Mob 07809 571790

Email tac59@talktalk.net

The Tree GP

THE TREE SPECIALIST

✓ Tree Felling	✓ Stump Grinding
✓ Tree Surgery	✓ Section Dismantling
✓ Hedge & Shrub Pruning	✓ Tree Planting
✓ Firewood	✓ Debris Removed From Site

FRIENDLY PROFESSIONAL ADVICE & FULLY INSURED

Tel: 01473 359582

www.the-tree-gp.co.uk

C.H.A.P.S
Presents
CINDERELLA

A colourful all singing, all dancing pantomime for all the family
at Chamberlin Hall, Bildeston

Friday 24th & Saturday 25th February 2012 at 7.30pm

With a matinee on Sunday 26th February at 2.30pm

Friday 2nd March 2012 at 7.30pm

£6 Adults £4 Children

Saturday 3rd March 2012 at 7.30pm

£10 Adults £8 Children including food

Tickets on Sale from 1st February 2012 from June Taylor on 01449 740995

Walnut Tree Designs

BESPOKE CURTAINS & BLINDS

Free design consultation in your own home

Complete made-to-measure service for all your soft furnishing requirements

.....

UPHOLSTERY - PELMETS - HEADBOARDS - VALENCES

CUSHIONS - FABRICS - TRIMS - POLES

VENETIAN BLINDS

.....

Do call Viki Angela or Terri Oxley to arrange a free consultation

Tel: 01449 736807 / 01284 828263 M: 078269 30011

email: walnuttreedesigns@yahoo.com

Cockerells Hall, Buxhall, IP14 3DR



Ingredients

MAKES ABOUT 36

140g softened butter

115g dark brown sugar

90g treacle or golden syrup

1 egg

250g plain flour

30g self raising flour

3 tsp ground ginger

2 tsp ground cinnamon

3/4 tsp ground cloves

3/4 tsp ground nutmeg

1 tsp bicarbonate of soda

For the Icing

1 egg white

1/2 tsp lemon juice

125g sifted icing sugar

assorted food colourings if required

Preparation Method

1. Lightly grease two baking trays. Beat the butter and sugar in a bowl until light and creamy, beat in the treacle and egg. Fold in the combined flours spices and bicarb of soda. Turn onto slightly floured surface and knead for three minutes. Cover with cling wrap and chill for 10 minutes.
2. Divide this dough in half and roll out between two sheets of baking paper to 5mm thick. Lay the dough on the trays and chill for a further 15 minutes until firm.
3. Preheat the oven to 180C
4. Cut the dough into desired shapes and place on the trays then bake for 10 minutes. Remove from the oven to cool for 5 minutes before icing.
5. To make the icing whisk the egg white until foamy. Add the lemon juice and sugar and stir until glossy. Tint the icing any colour then spoon into piping bag for decoration.

BILDESTON PARISH COUNCIL

Minutes of the meeting of Bildeston Parish Council
held on 9th January 2012 in Chamberlin Hall at 19:30

In attendance:

Councillors:

R Lester (Chairman), A Guttridge (Vice-Chairman)
J Cartwright, P Cousins, R Lindsay, R Taylor, N Tye

Cllr J Pembroke (SCC), Jacqueline Clarke (MEANT),
Patti Derri (MEANT)

V J Allard (Clerk), P Gladwell (RFO)

There was one member of the public present

C140/11/12 CHAIRMAN'S WELCOME

The Chairman welcomed two representatives from MEANT, Members and Officers and one member of the public to the meeting.

C141/11/12 APOLOGIES FOR ABSENCE

Apologies for absence had been received from Cllrs D Drury and Desmond Keane (BDC) and PCSO Fudge.

C142/11/12 DECLARATIONS OF INTEREST

Cllr Guttridge declared that he was an officer of Suffolk County Council.

C143/11/12 TO APPROVE THE MINUTES OF PREVIOUS MEETING

Subject to the minutes of the meetings held 12 December 2011 being amended to exclude Cllrs Dempsey, Keane (BDC) and Pembroke (SCC) and PCSO Fudge from the attendance list, the minutes were confirmed and signed as a correct record.

C144/11/12 POLICE REPORT

A report covering the period 12/12/11 to 06/01/12 had been received.

During this time there had been two crimes recorded within the parish, this compared to six crimes for the same period last year.

BREAKDOWN OF CRIMES

Theft from Motor Vehicle

Between 15:00 on the 29/12/11 and 13:00 on the 30/12/11 an insecure vehicle in Squirrels Mill Road has been entered and a Sat Nav was taken. There were no suspects for this.

Criminal Damage – Vehicle

Between 16:30 on the 31/12/11 and 15:00 on the 01/01/12 a vehicle parked outside a property in Newberry Road was Vandalised. There were no suspects for this.



C145/11/12 SUFFOLK COUNTY COUNCIL

Cllr Pembroke reported on the results of the Budget Challenge survey. Taking just a sample of responses, people had said they did not want funding cut for services for vulnerable and looked after children and older people which was not surprising. They would not mind paying for libraries, bus services, youth clubs, child care centres. Some would not mind spending less on archaeological work and subsidies for buses and rights of way.

He also said that he was very pleased with the way repairs to highways had been carried out. The condition of Suffolk roads had come very high in a National Survey.

C146/11/12 BABERGH DISTRICT COUNCIL

There was no report from Babergh this month.

C147/11/12 FINANCE

To Approve Quarter 3 Accounts

The RFO presented the third quarter accounts (circulated) which were **RECEIVED**.

To Review the 2011 Action Plan

All actions recommended by the auditors in the plan had been complied with.

To Approve Payments

The following payments were approved:

Payee/Service	Cheque No.	Amount
Back Type Ltd Music festival printing	101358	£711.00
JK & GA Agnew Woods A/C Christmas Tree	101359	£282.00
Clerk	101360	£170.58
RFO	101361	£101.30
The Post Office HMRC	101362	£134.40
SCC Grounds Maintenance Cemetery Cemetery Coronation p/ground Coronation p/ground	101363	£725.62
Jo Cartwright Christmas Hospitality	101364	£68.82

C148/11/12 CHAMBERLIN HALL – To consider a request for funding

To be carried forward.

C149/11/12 MONKS ELEIGH AND NEIGHBOURHOOD TRANSPORT (MEANT)

Jacqueline Clarke and Patti Derri (Members of Monks Eleigh Parish Council) presented a report in support of a regular transport service for the villages between Bildeston and Sudbury. They explained how they hoped the scheme would work although there were still

questions to be answered. As a result of distributing leaflets and questionnaires to a good number of households in Bildeston seeking support for this proposal, they felt there was interest and as a result they were seeking preliminary start up funds.

Members advised them to prepare a business plan with examples of some fares and to show the level of support required from the Parish Council for consideration at a future meeting.

C150/11/12 TRAFFIC CALMING

Members of the Working Party were thanked and congratulated for completing the set task. Following advice from the County Council, a report listing potential options for traffic calming and speed reduction had been circulated.

On consideration of the report it was **DECIDED** that a workshop be arranged to form an overall option to be taken forward to of a **PUBLIC MEETING** to be held in **MARCH**.

C151/11/12 MATTERS ARISING/CARRIED FORWARD FROM PREVIOUS MEETINGS

Signage for King's Pightle

The Chairman had prepared a report which was discussed.

Grove Cemetery – Rules

Councillor Cousins would amend and prepare for reproduction. Display and circulation to users to follow.

Brooksfield – Dropped Kerbs

The SCC Highways had made no further contact. The Clerk was asked to send a reminder.

Preparations for Winter – Purchase of a Manual Gritter

DECIDED not to pursue at this time.

C152/11/12 PLANNING MATTERS

Planning Appendix A

Application Number:	B/11/01582
Location:	Rose Cottage, 77 High Street, Bildeston, IPSWICH, IP7 7ER
Proposal:	Fell 1 no. Apple Tree and 1 no. Pear Tree to ground level. Balance crown of 1 no. small Apple Tree by 25%.
Decision	No Objection

Planning Appendix B

Decided by Babergh District Council

Application Number:	B/11/00195
Location:	Tankard Farm, Wattisham Road
Proposal:	Erection of 2 no. detached and 2 no. pairs semi-detached dwellings and improvement to existing vehicular access (existing bungalow and outbuildings to be demolished) as amended by drawings received 13/07/2011.
Decision	Granted

Application Number:	B/11/01356
Location:	Chamberlin Hall, Chamberlin Close
Proposal:	Installation of Solar PV panels (to south facing roofslope of village hall).
Decision	Granted

Application Number:	B/11/00895
Location:	Great Copt Hall, Ipswich Road, Bildeston, Ipswich, IP7 7BH
Proposal:	Notification under Part 6 of Schedule 2 of the Town and Country Planning (General Permitted Development) Order 1995 – Erection of storage building for agricultural use.
Decision	Granted

In light of the number of recent applications to fell old fruit trees, the Clerk was asked to write to the Planning Authority to ask that an arbouriculturist be consulted before allowing the destruction of trees that might be old and rare varieties.

C153/11/12 ROAD SAFETY

Community Speedwatch (CSW)

There was no report this month.

C154/11/12 MATTERS TO BE BROUGHT TO THE ATTENTION OF THE COUNCIL

- Bildeston History Quarterly – A letter of thanks had been received from the editor.
- Letter from 'The Great Preston St Mary Olympiad' – Member to attend an inarguable meeting
- Thanks to Chamberlin Hall Committee for hedge trimming in Chamberlin Lane
- Dog Fouling was still a problem – further notice in the Bugle
- Cars were parking on the pavements in Newberry Road – Clerk to inform the Police
- Two people had fallen on the footbridge over the roadside ditch in Consent Lane – Clerk to report to SCC Highways
- Clerk to ask Babergh that if car parking charges were to be introduced in the district, was it intended to impose charges on their staff car park?

The meeting closed at 21.45

The next meeting of the Parish Council was scheduled to be held on 13th February 2012.

In The Mood For Love?

Don't forget it's Saint Valentine's Day this month ... the day is named after an early Christian martyr named Saint Valentine, and was established by Pope Gelasius I in 496 AD. The day first became associated with romantic love in the circle of Geoffrey Chaucer in the High Middle Ages, when the tradition of courtly love flourished.

HONEY BEE'S NURSERY

Hitcham Village Hall
The Causeway, Hitcham

For children aged 2—5 years old
High adult : child ratio
Qualified and Experienced Staff

2 Indoor Rooms and Large Outdoor Area

Opening Times

Monday, Wednesday & Friday 9.15a.m.—12.15p.m. or 3.15p.m.
Tuesday & Thursday 9.15a.m.—12.15p.m.
Early Drop off of 8.30a.m. available
Lunch Club available each day until 1.15p.m.
Rate is £2.50 per hour (long day £15.00)

Ofsted Registered

Early Years Funding accepted for all 3 & 4 year olds
2 year old funding may be available

Awarded the Suffolk Quality Assurance Kitemark

Come along for a visit during any session, no appointment
necessary or ring for more details and a prospectus
Contact: Mrs Sharon Scarfe 01449 740764 (village hall)
01449 740581 (home)



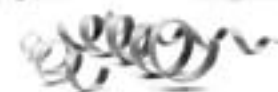
MURDOCH JOINERY



MAKERS OF HIGH QUALITY
BESPOKE KITCHENS IN SUFFOLK

CALL 07845 938670

WWW.MURDOCHJOINERY.CO.UK



BARGEWELL SKIP HIRE

2, 3, 4 & 6 Yard Skips

- Long or short term hire
- Delivery service 7 days a week
- Fast friendly service

Stowmarket
01449 615056

Mobile 07770 452378
High Rd, Gt Finborough, Suffolk

BAD OWNERS

There is still too little regard by dog owners to their pets' requirements. Owners are reminded that the Dogs (Fouling of Land) Act 1996 requires them to clean up after their dog. So long as the offending matter is wrapped, any litter bin may be used for its disposal. With the number of bins provided in the village, there is no excuse for this continuing disrespect for the care of our village.

NOTICE TO ALL DOG WALKERS

"IF A DOG DEFECATES AT ANY TIME ON DESIGNATED LAND AND A PERSON WHO IS IN CHARGE OF THE DOG AT THAT TIME FAILS TO REMOVE THE FAECES FROM THE LAND FORTHWITH, THAT PERSON SHALL BE GUILTY OF AN OFFENCE"

The above applies to all footpaths and roadside verges within the 30mph limit.

There is currently a particular problem in Church Lane and since the Parish Council and therefore YOU pay for two dog bins, one at the junction with Consent Lane and one at the top of the hill, there is NO EXCUSE for not cleaning up after your dog. Sadly the problem is not confined to this one area, far too many of the village's roads and streets are similarly affected.

PLEASE DO NOT ALLOW THIS TO CONTINUE

Remember there are no bad dogs, only bad owners – Parish Council, January 2012

SESAW SAYS THANK YOU

A sincere thank you to everyone who supported SESAW during 2011 which was a particularly difficult year. An overwhelming number of sick and abandoned animals arrived at the Sanctuary. Many have started new lives with caring owners, some are still suffering the effects of gross neglect, others await rehoming. It would be impossible to carry on this work without the generosity of the public, the co-operation of local companies, vets and the media and the unfailing volunteers.

2012 is off to a good start with the news that SESAW is the chosen charity for the Bypass Nurseries Primrose Festival, from 25th February to 4th March. There will be craft stalls at this very popular event and the company will donate 5p to SESAW for every primrose sold.



IS NOW CARTOON WORKSHOP
FOR CHILDREN AND ADULTS
AT BROOK FARM STUDIO
25TH FEBRUARY 2012
2 p.m. ~ 4 p.m.
BEGINNERS WELCOME!
WATCH THIS SPACE...
CONTACT BIB EDWARDS 01449 740664
EMAIL bib.edwards@btinternet.com



Pancake Party!

**TUESDAY 21ST FEBRUARY
6PM-7.30PM
AT BILDESTON BAPTIST CHURCH
IN THE LOUNGE**



EVERYONE WELCOME!

**50P A TICKET. AVAILABLE FROM THE COMMUNITY COFFEE SHOP
OR PHONE CLAIRE AFTER 4PM ON 01449 741187**

RYLENES CATTERY

Wallow Lane • Naughton • Nr. Hadleigh • Suffolk • IP7 7BZ

3 miles from Bildeston

*5 Star Luxury Boarding in a rural countryside location
where each cat is an individual*

- ☺ **R** Reliable, experienced, friendly owners
- ☺ **Y** Young/old felines boarded
- ☺ **L** Long/short stays
- ☺ **E** Extra attention re: medical/dietary needs
- ☺ **N** Night/Day vet on call
- ☺ **E** Essential vaccinations
- ☺ **S** Single/family heated & insulated chalets

LOTS OF CUDDLES & TLC

**Telephone: 01473 658747 • E-mail: rylenes@btinternet.com
www.rylenescattery.co.uk**



**OPEN
ALL
YEAR**

LANDSCAPING

*Complete
Landscaping
Services*

**Considering a Block Pave
DRIVE - PATH - PATIO?
ADVANTAGES!
Looks good and increases
property value
NO MAINTENANCE**

- **PATIOS**
- **DECKING (all types)**
- **DRIVES (Brick - Block - Gravel)**
- **FENCING**
- **GATES**
- **PATHS**



Call Chris Smith on 01449 740128 or 07904 334506



**GENERAL REPAIRS
TYRES & EXHAUSTS**

FREE LOAN VEHICLE WHEN AVAILABLE

BASE GARAGE LTD

**Lower Farm Road, Great Bricett, Ipswich,
Suffolk, IP7 7DR**

01473 657704 or 01473 658987

Paul's Carpentry

Property Maintenance

*All Carpentry & Painting projects
considered large or small
Internal or External*

**Tel: 01449 616888
Mobile: 0779 2340365
email: paulhb@btinternet.com
www.carpentersinsuffolk.co.uk**

We are a small, friendly Ipswich based practice with projects mostly in East Anglia and London. We tailor our service to your needs. We have considerable professional experience designing advanced and complex buildings as well as small residential projects.

We Specialise in:

- Residential Design
- Loft Conversions & Extensions
- Commercial Design and Offices
 - Interior Design
- 3d Visualisations and Graphics

We can provide:

- Outline Design
- Planning Applications
- Building Regulations
- Construction Drawings

Contact us for a **FREE** quotation

www.marcharchitecture.co.uk

email: marta@marcharchitecture.co.uk

Tel: 01473 749 226 Mobile: 079 1213 9595

SUFFOLK CARPET CLEANERS

We'll get your
Carpet & Upholstery
fresh & clean.

* Stain Guard available
at extra cost.

For more information

Tel: 01449 741 550

Mob: 07586 921 610

Email: info@suffolkcarpetcleaners.co.uk

TOWN | COUNTRY | EQUESTRIAN



Emmerson Dutton



Kirsty Dutton



Rachel Lapworth

Bury St Edmunds, Suffolk
T: 01284 749 433

duttons.uk.com

Duttons
Estate Agents

FIREWOOD

DRY SEASONED LOGS

Various Loads Available
Or bags at £5.50 each

Call Carol Abbott on 01473 829130
or 07768 795981

Tree, Garden Work and Driveways also
Undertaken





Barnards



Volkswagen
Station Road East • Stowmarket
Tel: 01449 612121

*** MOT's £39.00 ***
Any car • Any make

Applies Monday to Friday only • Class IV only

Tyres at
**very
competitive**
prices.

We offer a **free**
tyre check

Take
advantage
of a **free** 34
point health
and safety
check

All Makes Major Service £249.00
All Makes Minor Service £129.00
Cambelt inc tensioner £349.00 (Volkswagen, Audi, Skoda
and SEAT only)



Free collection and delivery in local area • Courtesy
cars available

Please keep an eye on our website for all our up-to-
date offers



KINGS HEAD

& Brewery

Nigel, Susie, Ryan and Freya look forward to welcoming you to the Kings Head.

- Here's our **free live music** for **February**: from **9pm on Sat 25th** the superb **Graham Welham** will be playing folk, rock, country and blues featuring a mix of his own + cover tunes; and from **1pm on Sun 26th** we have **Kevin Nightingale** playing contemporary classical solo acoustic guitar.
- On **Thursday 23rd February** we are holding a **charity quiz night** starting at 8:30pm. To reserve a table please phone Sue or Nigel on 01449 741 434. Thanks to Decembers quiz teams who raised £215 for Great Ormand Street Childrens Hospital.
- Our good value homemade food uses quality ingredients that are locally sourced where possible. We are well known for tasty beer-battered fish & chips, delicious boozy beef pie (red poll beef supplied by Brook Farm, Brent Eleigh) and our freshly prepared traditional Sunday roasts. Meals are cooked to order and available to eat-in or take-away. To reserve a table please phone Sue or Nigel on 01449 741434.
- We brew our own real ales on-site (tours by arrangement) with at least one other from a local independent brewer.
- Our opening times are as follows:

Wednesday	Open 6pm-12am (open mic/buskin night)
Thursday	Open 6pm-11pm (bar games night)
Friday	Open 4pm-12am (full menu 6-9pm)
Saturday	Open 12pm-12am (full menu 12-2pm & 6-9pm)
Sunday	Open 12pm-10:30pm (roast & full menu 12-3pm)
Monday/Tuesday	Closed (except bank holidays)

February at Brook Farm Studio

Pottery
Friday 17th Feb: 2pm-5pm £20

Portrait Drawing
Saturday 18th Feb: 10am-1pm £10

Cartoon Workshop
Saturday 18th Feb: 2pm-4pm £5

Felting
Every Thursday: 10am-12.30pm £8

Painting
Every Friday: 10am 12.30pm £8

Brook Farm Studio Bildeston

For details call Hazel on 07432 138966 or email brookfarmstudio@gmail.com

STOWMARKET AGGREGATES

Cheapest Prices in Stowmarket

- **Digger & Lorry Hire**
- **Site Clearing**
- **Grab Hire**
- **Top Soil**
- **Earth Moving**
- **Sand & Gravel**
- **Bagged or Loose**
- **Same Day Delivery**

97 Finborough Road, Stowmarket
TEL: 01449 613524
or
07850 450770

**Friendly Experienced
Teacher offers
Individual**

MATHS Tuition

**Speciality
Confidence Building
KS1 – KS3**

Call Colin Plummer on
01449 736918
for details and availability
or email:
colinp52@btinternet.com

Helping Hands



We are always here to lend a hand
No job too small



Just give us a call
Monday – Friday
9am-5pm

01449 741491 / 744360

The Bildeston 'Good Neighbour' Scheme
Run by the community for the community
Volunteers required, please
give us a call if you can help!

S.C. PLASTERING SERVICES



**CALL SEAN FOR A
FREE QUOTE**
TEL: 01449 723264
OR 07773 706006



Gilly's Beads n Jewellery Designs

Many designs to choose from or tailored to
your individual needs.

Follow me on Facebook Gilly's Beads
or Twitter @GillysBeads

Or just send me your email and I will keep you posted
with all the new designs

I am based at Bildeston Ipswich
For more information contact Tracey
on

07415 126 339

email: mail@gillysbeadsnjewellerydesigns.co.uk
www.gillysbeadsnjewellerydesigns.co.uk

Ashtons Aerials & Satellite

Your Digital TV & Radio Specialists

- Wideband "Digital" aerial upgrades, loft & exterior installations.
- FM & DAB aerial upgrades & installations.
- Poor reception solutions.
- Extra viewing points.
- Projector & Home Cinema installations.
- European Fixed & Motorised Satellite systems.
- CAI Plus registered, Number C1531.
- Sky upgrades & installations.
- Flat screen TV installations.
- Phone line extensions
- Repairs & upgrades to existing TV and satellite systems.
- Communal system installations.
- BBC/ITV freesat supply & installation.
- Registered Digital Installer (RDI) 18264786



get set for digital



Unit 9 Anglia Business Park, Ware
Road, Ringshall. Tel: 01449 777104
www.ashtons-aerials.co.uk

Garden & Property Maintenance

Weeding – Hedges – Lawns – Fencing – Patios – Pruning

Internal and External Home Improvements

Reliable and Dedicated Service

For your GARDENING needs
call JAMES

Tel: 01787 312 401
Mob: 07817 208 869
email: jameskossick@gmail.com

For your PROPERTY needs
call IAN

Tel: 01787 313 222
Mob: 07791 647 187
email: iankossick@btinternet.com

BILDESTON ELECTRICAL

Rewires, Extensions, Board Changes or New Installations

Any Alterations to Existing Installations
(lights, sockets, etc.)

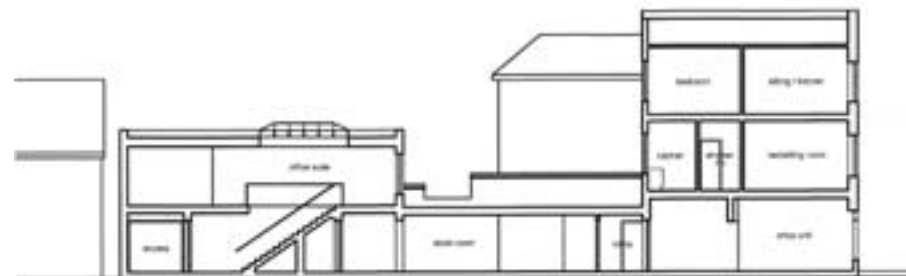
Contact Ian
01449 743664 or 07754 723685

alex baldwin architects

specialising in: residential design & developments, listed buildings, extensions & alterations, and light commercial

measured surveys, planning and building regulations applications, planning appeals

WELHAM HOUSE
13 SQUIRRELS MILL ROAD
BILDESTON
IPSWICH
SUFFOLK IP7 7DY



longitudinal section thru offices, stock room, shop unit and existing flats above

T: 01449 741227
M: 07733 375625
E: alex.baldwin@tiscali.co.uk contact: alex baldwin diparch (Oxford) ARB RIBA

St Mary Magdalene

Bildeston w Wattisham Parish Church

A Big Thank You to all the many volunteers that help with St Mary Magdalene Church here in Bildeston. We have cleaners, flower arrangers, people who lock and unlock the Church, bell ringers, those that do refreshments, those that keep the Churchyard tidy, fundraisers, people who donate and support our events, those who prepare and serve the Over 60's Christmas lunch, and all our PCC members. I am very grateful for all you do; it really does make a difference and makes our Church beautiful for all to see and use. On behalf of Ros Cohen and myself (Churchwardens), thank you again and best wishes for 2012. God bless.

Teresa Lester

Can You Help? This is officially my first year as Churchwarden with Ros Cohen. The role can be very demanding at times but I have enjoyed the many duties bestowed on me, with many others helping with the smooth running of the Church. However, we do have some roles/tasks coming up which will need new volunteers in April. We need a new Churchwarden, a Treasurer and Secretary. If you are interested, or know anyone who would be interested, please give me (Teresa Lester) a ring on 744120.

Reader's Letter: Daddy's Little Girl from Paul Cousins

A 17 year old girl is pregnant and she is asking her mother to tell her father. Having had a very close relationship with her dad, and having always been daddy's little girl she knows he will be shattered. Her mother agrees and drops her daughter off at the ministers house as she tells her husband the news.

Meanwhile the daughter waits at the ministers house being consoled and counselled. The minister not judging her prays with her as they wait. Then all of a sudden the daughter sees the headlights of a car arriving. She runs into the bathroom and locks the door.

But the minister reprimands her and she comes out trembling. She is not afraid of her father's anger. She is terrified that she will no longer be her fathers little girl.

She hears footsteps and the tap on the door. Her lip quivers, followed by a flood of tears. She hides behind the ministers tall body. Her mother comes in first smiling her eyes swollen with tears. And then he is there. Her father doesn't even stop to say a word to the minister. He strides straight past him and comes to his daughter and gathers her up in his arms. He holds her close and whispers I love you and I will love your baby too.

She barely manages to say it but she replies I am sorry daddy. I love you so much. I know. Lets go home. (This is a true story.)

February 2012 Church Services & Events in Bildeston

St Mary Magdalene

Bildeston w Wattisham Parish Church

For more information, contact Revd Barbara Stanton

Tel: 01449 744190 Email: b.stanton150@btinternet.com

5th February	8am 9.30am	Holy Communion Benefice Service at Lindsey to celebrate the Queen's Accession
12th February	9.30am 11am	Holy Communion at Semer Morning Prayer BCP
16th February	9am	Ash Wednesday Communion at Whatfield
19th February	11am	Parish Communion
26th February	9.30am 11am	Holy Communion at Nedging Family Service
4th March	9.30am 11am	Holy Communion with hymns Benefice Communion at Nedging

Baptist Church, Duke Street, Bildeston

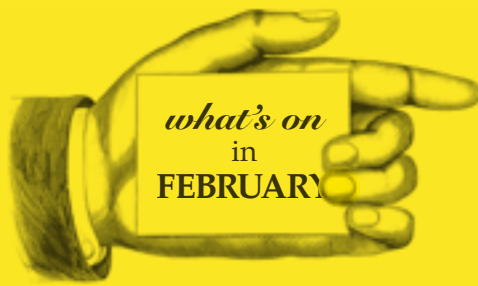
Paul Cousins tel: 01449 744360 email: paul.cousins268@btinternet.com

Service every Sunday morning at 10:45

Lunch Club: at 12:30 on the **first Wednesday** of each month
All are welcome

Community Coffee Centre: Every Friday from **09:15 to 11:30**

Enjoy meeting old and new friends at these events!



Bildeston Community Coffee Centre Baptist Church 9:15-11:30 ... **Every Friday**

Bildeston Mother & Toddler Group Baptist Church 9:45-11:45**Every Tuesday**

Bildeston Ladies Club Desserts with Chris Lee at The Crown 19:30. **Thursday 2nd**

But You Don't Look Ill cheerful support at the Stevenson Centre,
Gt. Cornard 13:00-15:00 – drop in any time £1 Tel: 07950 436584..... **Thursday 9th**

Parish Council Meeting at Chamberlin Hall..... **Monday 13th**

Watoto Choir at The John Peel Centre, Stowmarket 19:00 **Wednesday 15th**

Watoto Choir at The John Peel Centre, Stowmarket 19:00 **Thursday 16th**

Pancake Party at Bildeston Baptist Church **Tuesday 21st**

CHAPS' Cinderella Panto at Chamberlin Hall 19:30..... **Friday 24th**

CHAPS' Cinderella Panto at Chamberlin Hall 19:30..... **Saturday 25th**

CHAPS' Cinderella Panto at Chamberlin Hall 14:30..... **Sunday 26th**

Jewellery SALE from now until Valentines Day

10% off everything at www.gillysbeadsnjewellerydesigns.co.uk

More details on these events inside.

Tell us about March events!

01449 741541 / editor@bildestonbugle.co.uk



When you're finished with this Bugle please pass it on or recycle it.